

GENERAL NOTES:

1. SEE SHEET M0.1 FOR ADDITIONAL GENERAL NOTES.
2. STEAM CONVECTORS SHALL BE CONTROLLED FROM THE VAV BOX SERVING THE ASSOCIATED ROOM. CONTRACTOR SHALL CONFIRM LOCATION OF EXISTING CONTROL DEVICE SERVING EACH CONVECTOR PRIOR TO MODIFICATION OF CONVECTOR CONTROLS.

KEY NOTES:

- ① INSTALL DUCTWORK FROM EXISTING VAV BOX TO EXISTING DIFFUSERS AS SHOWN.
- ② EXISTING CEILING IN HALL #2 SHALL REMAIN DURING CONSTRUCTION. REMOVE PARTS OF EXISTING CEILING AS REQUIRED FOR INSTALLATION OF DUCTWORK. COORDINATE REMOVAL OF CEILING WITH GENERAL CONTRACTOR.
- ③ GRILLE SHALL BE INSTALLED IN EXISTING CEILING.

NO.	REVISIONS	DATE

DATE: NOVEMBER 2008
 DES BY: MAN CHK BY: MRS
 RECORD DRAWING
 BY: DATE: CONTRACTOR:

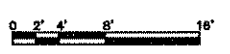
MECHANICAL DUCTWORK PLAN
 CITY ATTORNEY'S OFFICE
 CEILING REMODEL
 CITY OF MADISON
 DANE COUNTY, WISCONSIN

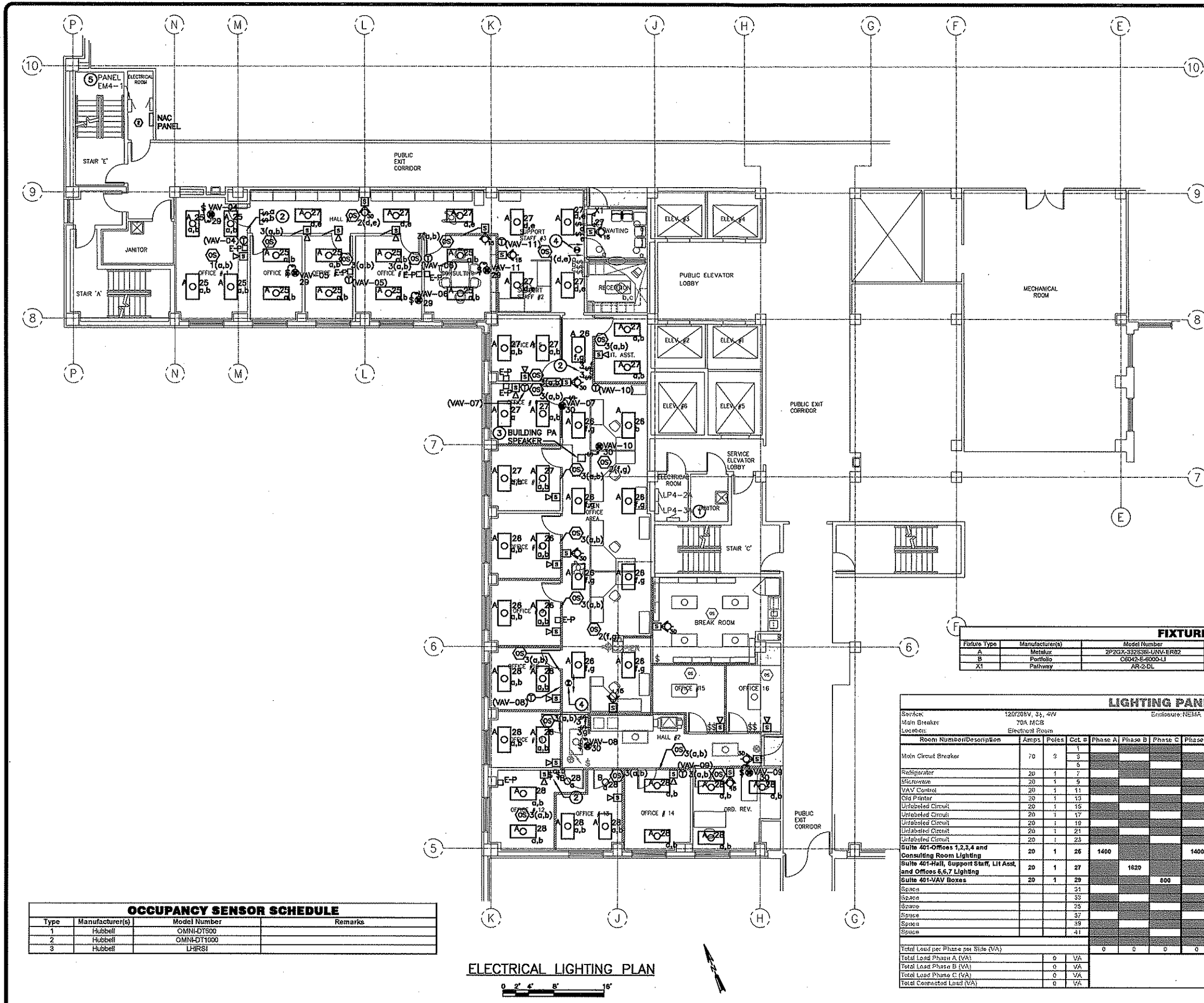


SHEET
M1.2

JOB NO. 1020.036

MECHANICAL DUCTWORK PLAN





- GENERAL NOTES:**
1. ALL FIRE ALARM SYSTEM ANNUNCIATION DEVICES WITHIN CITY ATTORNEY'S OFFICE SUITE 401 SHALL BE CONTROLLED FROM THE EXISTING FIRE ALARM CONTROL PANEL (FACP) LOCATED IN THE FACILITY'S SHOP ON THE GARAGE (GA) FLOOR. NEW STROBE DEVICES SHALL BE POWERED FROM NAC PANEL LOCATED IN ELECTRICAL ROOM BY STAIR E. NEW SPEAKER DEVICES, STROBE DEVICES AND NAC PANEL SHALL BE CONTROLLED FROM TRANSFORMER PANEL LOCATED IN SUITE 525 ON THE 5TH FLOOR. COORDINATE CONNECTION OF NEW FIRE ALARM EQUIPMENT TO EXISTING BUILDING FIRE ALARM SYSTEM WITH SYSTEM PROVIDER.
 2. DIVISION 16 CONTRACTOR SHALL PROVIDE RACEWAY AND BOXES AS REQUIRED FOR ALL LOW VOLTAGE HVAC CONTROL WIRING (<100V). CONDUIT FOR LOW VOLTAGE WIRING WITHIN WALLS SHALL BE REQUIRED FROM DEVICE/EQUIPMENT LOCATION TO ABOVE SUSPENDED CEILING. DIVISION 15 CONTRACTOR SHALL PROVIDE ALL LOW VOLTAGE WIRING AND DEVICES FOR HVAC EQUIPMENT. REFER TO DIVISION 15 OF THE SPECIFICATIONS FOR ADDITIONAL INFORMATION.
 3. ALL NEW WALL MOUNTED OCCUPANCY SENSORS AND LIGHT SWITCHES SHALL BE INSTALLED IN EXISTING LIGHT SWITCH BOXES FOR ASSOCIATED ROOM UNLESS OTHERWISE NOTED.
 4. ALL NEW LIGHT FIXTURES AND EQUIPMENT SHALL BE FED FROM EXISTING PANEL LP4-3A UNLESS OTHERWISE NOTED.
 5. PROVIDE SURFACE MOUNTED RACEWAY AND SURFACE MOUNTED BOXES FOR NEW THERMOSTATS AND FIRE ALARM DEVICES. SURFACE MOUNTED RACEWAY SHALL BE MANUFACTURED BY WIREMOLD, OR EQUAL.

- KEY NOTES:**
- 1 EXISTING LIGHTING PANEL IS MANUFACTURED BY CUTLER HAMMER, POWER-R-LINE SERIES. PROVIDE FIVE (5) 20/1 CIRCUIT BREAKERS FOR POWERING NEW LIGHTS AND EQUIPMENT. SEE PANEL SCHEDULE ON THIS SHEET FOR ADDITIONAL INFORMATION.
 - 2 PROVIDE NEW BOX IN WALL FOR INSTALLATION OF LIGHT SWITCHES.
 - 3 SPEAKER SHALL BE INSTALLED IN NEW CEILING NEAR EXISTING LOCATION AS SHOWN ON SHEET E1.1. INSTALL SPEAKER TO ALLOW RECONNECTION TO PA SYSTEM WITHOUT SPlicing OF EXISTING WIRING. LOCATE SPEAKER IN THE CENTER OF A CEILING TILE.
 - 4 INSTALL EXISTING EXIT SIGN IN NEW CEILING NEAR EXISTING LOCATION SHOWN ON SHEET E1.1. EXISTING EXIT SIGN BATTERY SHALL BE REPLACED WITH NEW BATTERY. CONNECT EXIT SIGN TO EXISTING POWER WIRING. WIRING SHALL BE EXTENDED AS REQUIRED.
 - 5 EXISTING 120/208V, 3-PHASE LIGHTING PANEL IS MANUFACTURED BY SQUARE D, SERIES E2. PROVIDE 20/1 CIRCUIT BREAKER IN AVAILABLE SPACE WITHIN LIGHTING PANEL FOR POWER TO NEW NAC PANEL.

OCCUPANCY SENSOR SCHEDULE

Type	Manufacturer(s)	Model Number	Remarks
1	Hubbell	OMNI-DT500	
2	Hubbell	OMNI-DT1000	
3	Hubbell	LHRSI	

FIXTURE SCHEDULE

Fixture Type	Manufacturer(s)	Model Number	Lamp Type	Mounting	Remarks
A	Metalex	2P2GX-322536L-UNV-ER02	3-32W T8	Recessed	
B	Portfolio	C8042-E-6000-LJ	1-32W Triple	Recessed	
XT	Pathway	AR-2-DL	2-5W Halogen	Surface	

LIGHTING PANEL LP4-3A

Room Number/Description	Amps	Poles	Cot. #	Phase A	Phase B	Phase C	Phase A	Phase B	Phase C	Cot. #	Amps	Poles	Room Number/Description		
Main Circuit Breaker	70	3	1							2					
Refrigerator	20	1	7							3					
Microscope	20	1	5							8	20	1	Copier		
VAV Control	20	1	11							10	20	1	Receptacles		
Old Printer	20	1	13							12	20	1	Receptacles		
Unlabeled Circuit	20	1	15							14	20	1	Receptacles		
Unlabeled Circuit	20	1	17							16	20	1	Receptacles		
Unlabeled Circuit	20	1	19							18	15	1	Printers		
Unlabeled Circuit	20	1	10							20	20	1	Front Receptacles		
Unlabeled Circuit	20	1	21							22	20	1	Front Receptacles		
Unlabeled Circuit	20	1	23							24	20	1	Space		
Suite 401-Offices 1,2,3,4 and Consulting Room Lighting	20	1	26	1400						26	20	1	Suite 401-Open Office and Offices 8,9 Lighting		
Suite 401-Hall, Support Staff, LII Asst. and Offices 6,6,7 Lighting	20	1	27		1620				1600	28	20	1	Suite 401-Offices 10,11,12,13,14 and Ord Rev Lighting		
Suite 401-VAV Boxes	20	1	28			600				30	20	1	Suite 401 VAV Boxes		
Space			31							32			Space		
Space			32							34			Space		
Space			35							36			Space		
Space			37							38			Space		
Space			39							40			Space		
Space			41							42			Space		
Total Load per Phase per Site (VA)				0	0	0	0	0	0	0	0	0			
Total Load Phase A (VA)				0	VA					Total Connected Load (%)				0	A
Total Load Phase B (VA)				0	VA					Total Connected Load + 25%				0	A
Total Load Phase C (VA)				0	VA					Square 25%				0	A
Total Connected Load (VA)				0	VA					Breaker Load				0	A

ELECTRICAL PLAN AND SCHEDULES

CITY ATTORNEY'S OFFICE
CEILING REMODEL
CITY OF MADISON
DANE COUNTY, WISCONSIN

STRAND ASSOCIATES, INC. ENGINEERS

SHEET
E1.2

JOB NO. 1020.036

DATE	NO.	REVISIONS
DATE: NOVEMBER 2008		
DES BY: MIM	CHK BY: BMS	
BY:	DATE:	CONTRACTOR: