

Time: 5/9/2018 11:19:44 AM

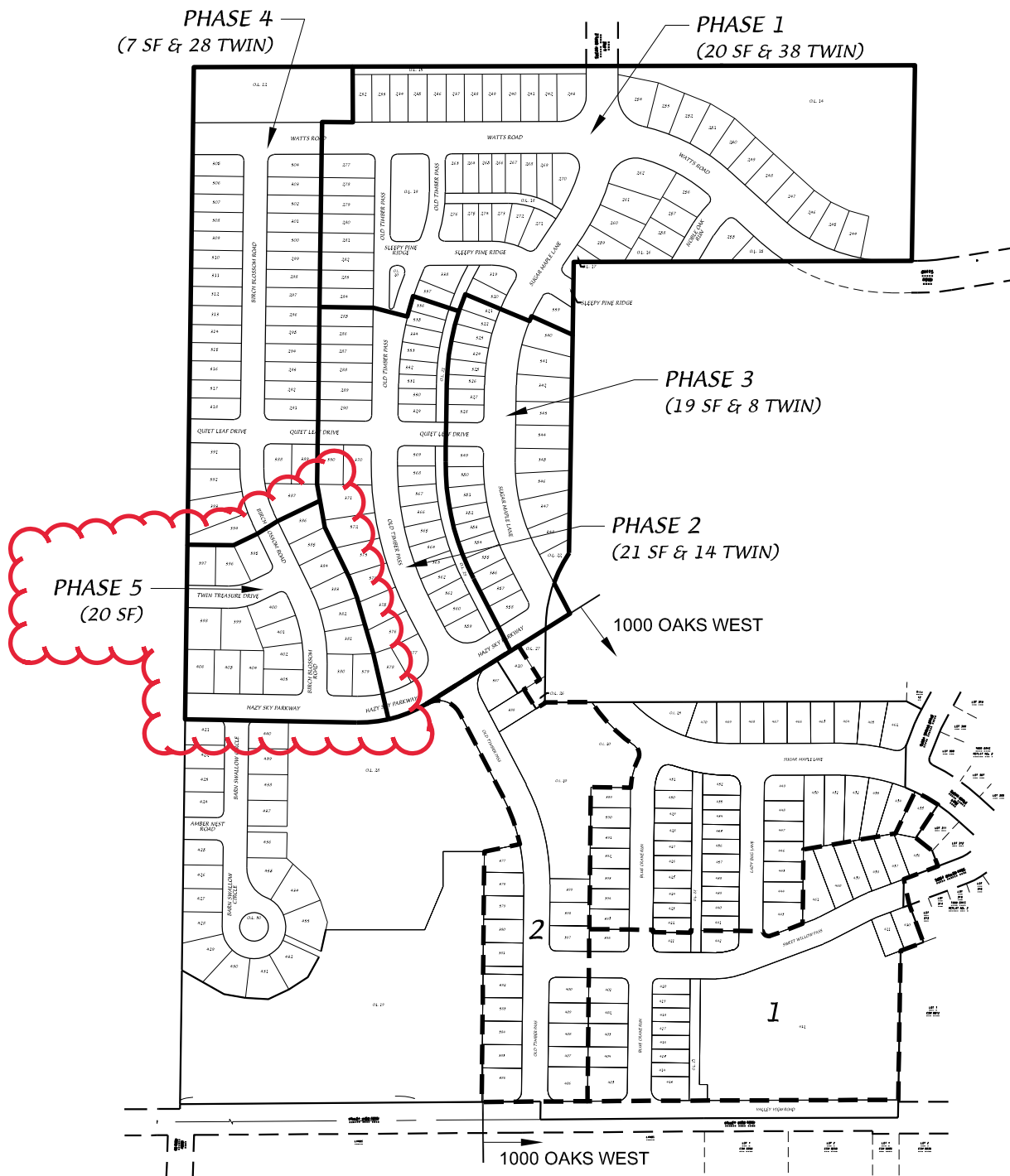
Session: C:\GTViewer_Sessions\Deming & Fourier SW.gts

City of Madison, WI - GIS/Mapping data

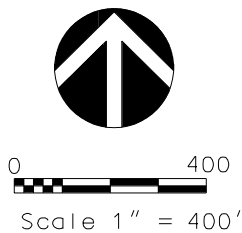
Printed By: entnt

Disclaimer: The City makes no representation about the accuracy of these records and shall not be liable for any damages

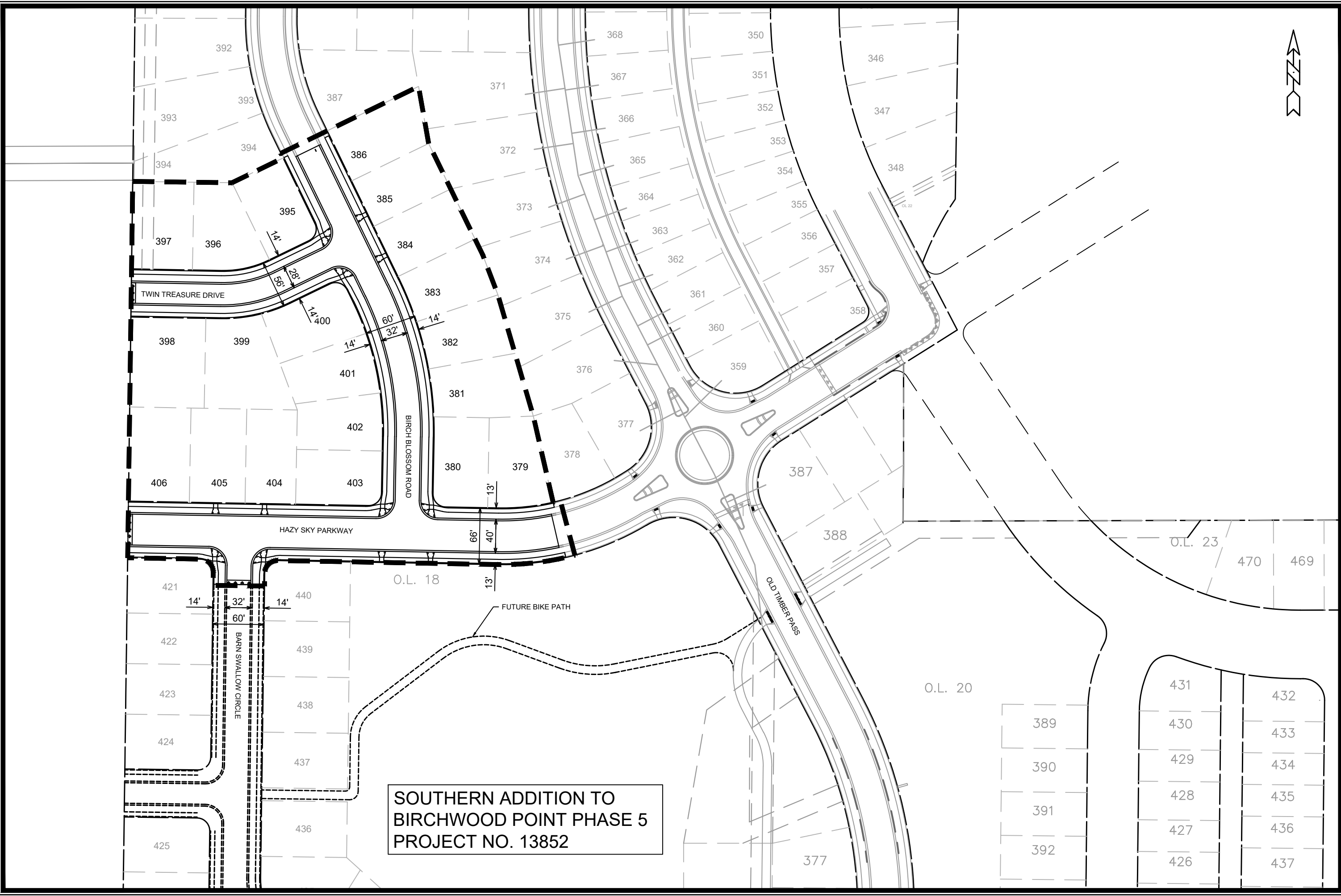
Birchwood Point South - Phase Map



D'ONOFRIO KOTTKE AND ASSOCIATES, INC.
 7530 Westward Way, Madison, WI 53717
 Phone: 608.833.7530 • Fax: 608.833.1089
 YOUR NATURAL RESOURCE FOR LAND DEVELOPMENT



DATE: 07-28-21
 REV.:
 F.N.: 20-05-146
 DRAWN BY: ATF



**SOUTHERN ADDITION TO
BIRCHWOOD POINT PHASE 5
PROJECT NO. 13852**

###	###	###	###	###	###	###
###	###	###	###	###	###	###
###	###	###	###	###	###	###
###	###	###	###	###	###	###
###	###	###	###	###	###	###
###	###	###	###	###	###	###
###	###	###	###	###	###	###

13852
MADISON, WI
9090

BOARD OF PUBLIC WORKS EXHIBIT
SOUTHERN ADDITION TO BIRCHWOOD POINT PHASE 5
M:\DESIGN\Projects\13852\CAD\Streets\13852EN-StreetLinework.dwg
CONTRACT NO:



13852
9090

389	431	432
390	430	433
391	429	434
392	428	435
	427	436
	426	437