

LANDSCAPE WORKSHEET

NUMBER OF TREES REQUIRED	130 TREES	NUMBER OF LANDSCAPE POINTS REQUIRED	575 POINTS
NUMBER OF PARKING STALLS	10 STALLS	NUMBER OF LANDSCAPE POINTS REQUIRED FOR LOADING AREAS	25 POINTS
NUMBER OF CANOPY SPACE TREES REQUIRED	10 TREES	TOTAL NUMBER OF POINTS REQUIRED	600 POINTS
NUMBER OF CANOPY SPACE TREES PROVIDED	10 TREES		

TABULATION OF POINTS AND CREDITS	ELEVANT	POINT VALUE	QUANTITY	POINTS ACHIEVED
CANOPY TREE: 2" - 3"	20	15	520	
DECIDUOUS SHRUBS	2	196	392	
EVERGREEN SHRUBS	2	2	4	
DECORATIVE WALL OR FENCE	5	0	0	
EVERGREEN TREES 3" HT.	15	0	0	
SMALL TREE: 1" - 3"	15	11	165	
		SUBTOTALS	1151	

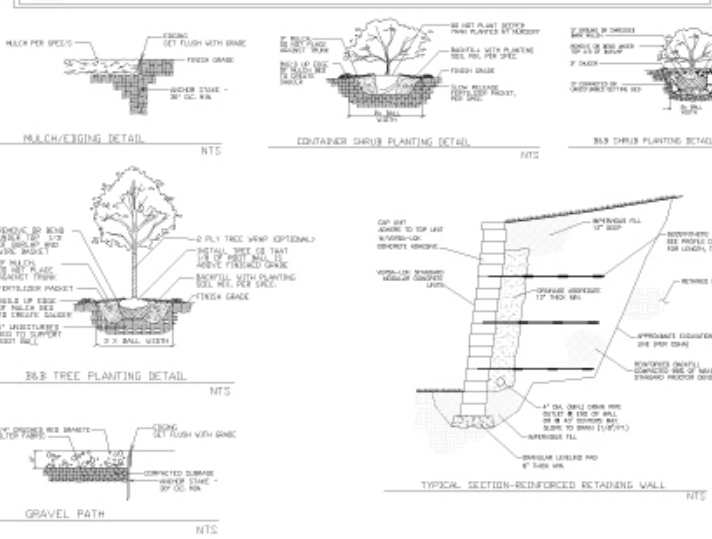
NUMBER OF LANDSCAPE POINTS PROVIDED: 1151 POINTS

LANDSCAPE LEGEND

QTY	COMMON NAME	LATIN NAME	SIZE	ROOT
SHADE AND ORNAMENTAL TREES				
5	Sienna Glen Maple	Acer x freemanii 'Sienna'	2" - 3" Cal.	B&B
8	Sterling Linden	Tilia tomentosa 'Sterling'	2" - 3" Cal.	B&B
6	Common Hackberry	Celtis occidentalis 'Chicagoan'	2" - 3" Cal.	B&B
2	Princess Diana Serviceberry	Amelanchier x grandiflora 'Pr.Diana'	1" - 2" Cal.	B&B
5	Leonard Messel Magnolia	Magnolia x leonardii 'Leonard Messel'	1" - 2" Cal.	B&B
4	Cleveland Select Pear	Pyrus cataractana 'Cleveland Select'	1" - 2" Cal.	B&B
6	River Birch	Betula nigra (clump)	10" - 12" Ht.	B&B
DECIDUOUS SHRUBS				
15	Endless Summer Hydrangea	Hydrangea macro 'Balmer'	3 Gal.	Cont.
5	Pink Diamond Hydrangea	Hydrangea paniculata 'Pink Diamond'	3 Gal.	Cont.
16	Dwarf Bronx Forsythia	Forsythia vridatisima 'Bronxensis'	3 Gal.	Cont.
5	Koreanopice Viburnum	Viburnum coccineum	2 1/2" Ht.	B&B
6	Dw. Polbin Lilac	Syringa meyeri 'Polbin'	3 Gal.	B&B
15	Froebel Spirea	Spiraea japonica 'Froebelii'	3 Gal.	Cont.
8	Java Red Weigela	Weigela florida 'Java Red'	3 Gal.	Cont.
30	Autumn Magic Chokeberry	Aronia melanocarpa 'Autumn Magic'	3 Gal.	Cont.
25	Dw. Bushhoneysuckle	Lonicera japonica	3 Gal.	Cont.
41	Carolinee Wander Rose	Rosa 'Carolinee Wander'	3 Gal.	Cont.
8	Knockout Rose	Rosa 'Knock Out'	3 Gal.	Cont.
25	Fragrant Sumac	Rhus aromatica	3 Gal.	Cont.
17	Silky Dogwood	Comus amomum	3 Gal.	B&B
11	Compact Viburnum	Viburnum trilobum 'Boley Compact'	18" Ht.	B&B
EVERGREEN TREES AND SHRUBS				
4	Creeping Cypress	Microbiota decussata	5 Gal.	Cont.
31	Wisconsin Juniper	Juniperus horizontalis 'Wisconsin'	5 Gal.	Cont.
6	Taunton Yew	Taxus x media 'Taunton'	18" Ht.	B&B
PERENNIALS				
14	Karl Foerster Reed Grass	Calamagrostis acutiflora 'Karl F.'	1 Gal.	Cont.
20	Stella D' Oro Dogtail	Hemerocallis 'Stella D' Oro'	1 Gal.	Cont.
13	Bleeding Heart Geranium	Geranium sanguineum	1 Gal.	Cont.
42	Goldstrum Blackeyed Susan	Rudbeckia fulgida 'Goldstrum'	1 Gal.	Cont.
14	Little Bluestem	Schizachyrium scoparium	1 Gal.	Cont.
31	Prairie Dropseed	Sporobolus heterolepis	1 Gal.	Cont.
6	Caspar's Brother Siberian Iris	Helictotrichon sempervirens	1 Gal.	Cont.
12	Blue Oat Grass	Sporobolus heterolepis	1 Gal.	Cont.

BIOSWALE / RAIN GARDEN PERENNIALS

COMMON NAME	LATIN NAME	COMMON NAME	LATIN NAME
Nodding Pink Onion	Allium cernuum	Rosinweed	Siphium integrifolium
Red Milkweed	Asclepias incarnata	Prairie Dock	Siphium teranthinthaecum
New England Aster	Aster novae-angliae	Ohio Goldenrod	Solidago ohioensis
Pale Indian Pentstemon	Cassia stratiolata	Stiff Goldenrod	Solidago rigida
Wild Senna	Cassia hebecarpa	Blue Vervain	Verbena hastata
Canada Tick Trefoil	Desmodium canadense	Ironweed	Vernonia fasciculata
Joe Pye Weed	Eupatorium maculatum	Culver's Root	Veronicastrum virginicum
Bananaeet	Eupatorium perforatum	Golden Alexanders	Zizia aurea
Daylily Daisy	Helianthus autumnalis	Bottlebrush Sedge	Hyssrix patula
Ox Eye Sunflower	Helianthus scaberrimus	Partridge Sedge	Carex heterostachya
Blue Flag Iris	Iris versicolor	Lance Fruited Oval Sedge	Carex scoparia
Wild Iris	Iris sibirica	Awl Fruited Sedge	Carex stipitata
Prairie Blazingstar	Liatris pycnostachya	Fox Sedge	Carex vulpinoidea
Dense Blazingstar	Liatris spicata	Canada Wild Rye	Elymus canadensis
Great Blue Lobelia	Lobelia siphilitica	Dark Green Bulrush	Scirpus atrovirens
Bergamot	Monarda fistulosa	Indiangrass	Sorghastrum nutans
Yellow Coralbear	Ruellia brittoniana	Prairie Cordgrass	Spartina pectinata
Sweet Black Eyed Susan	Rudbeckia subtomentosa		
Brown Eyed Susan	Rudbeckia triloba		



Baer Insurance Building
 9701 Brader Way
 Verona, Wisconsin 53593
 (Blackhawk Church Town Center Plat, Parcel 2)



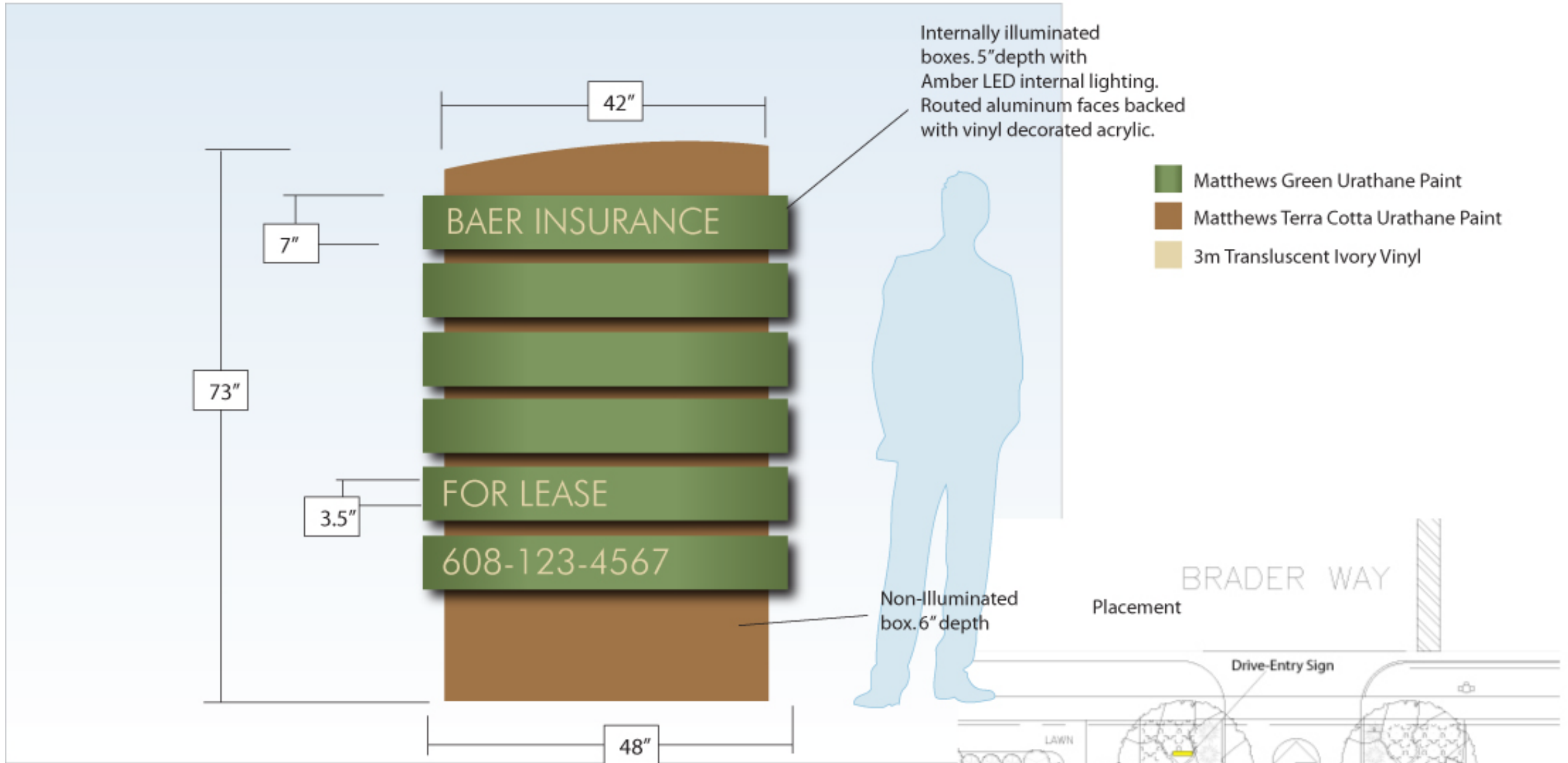
DRAWING NAME: LANDSCAPE PLAN
 SCALE: 1" = 20'
 DRAWN BY: LG
 DATE: 03-21-07

SHEET NO. **LS1**

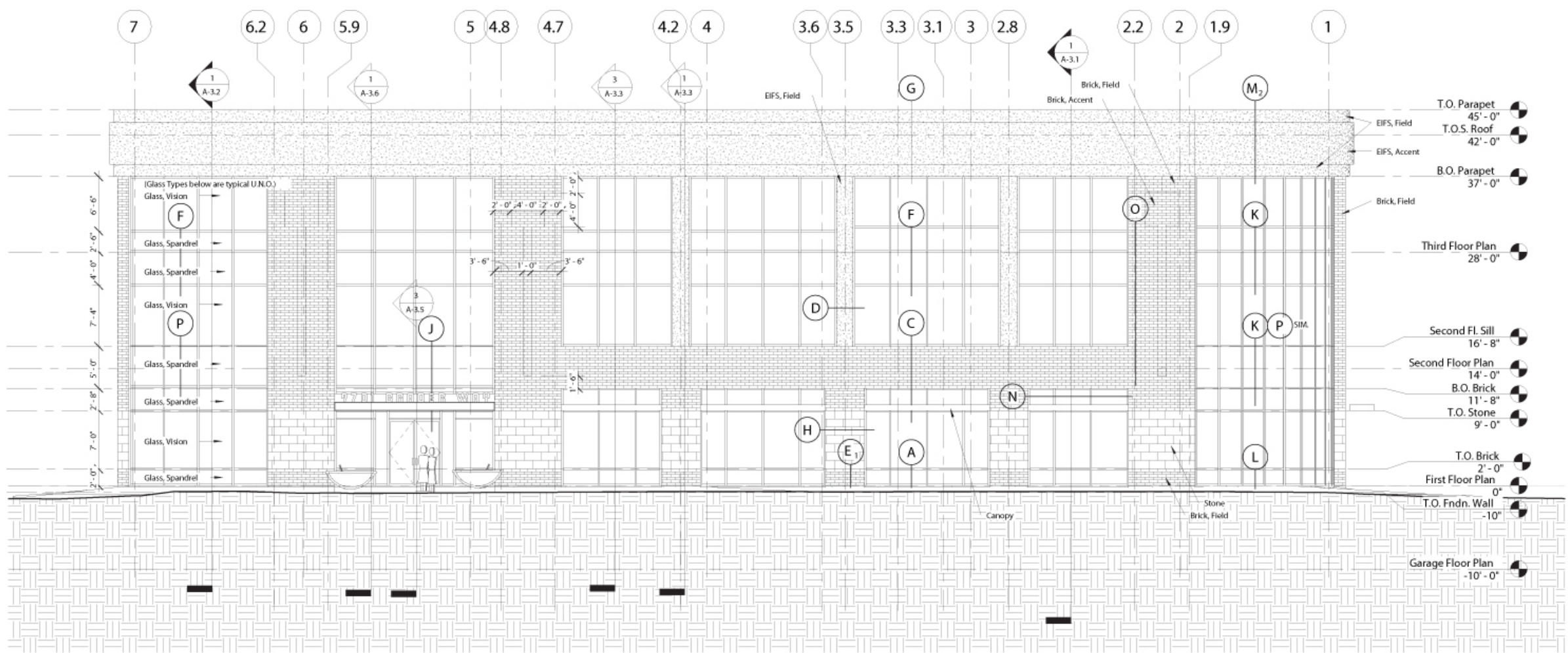


Scale 1" = 2' Signage Placement Overview

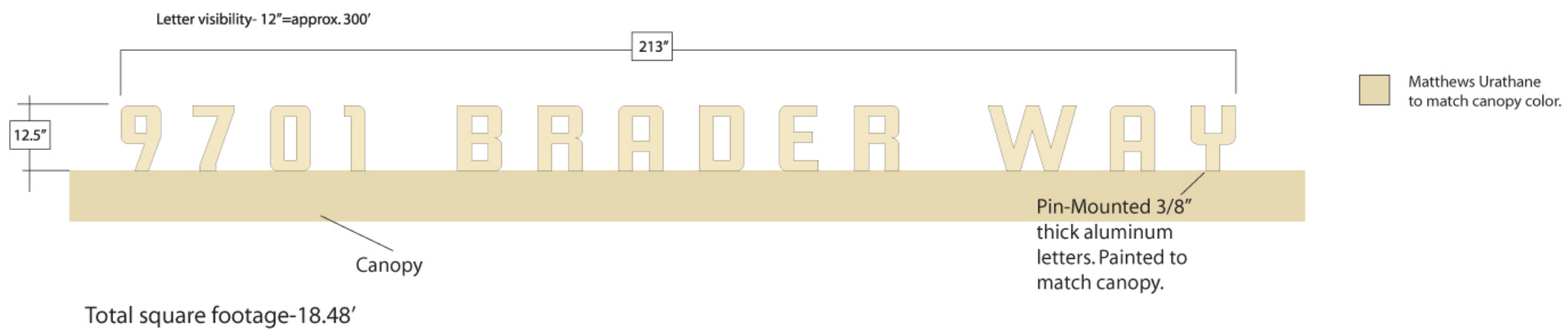
Drive-Entry Sign



- Single-Sided monument sign
- Internally illuminated tenant panels: Lit using Amber LED
- Routed aluminum faces backed with translucent vinyl decoration
- Total Square Feet- 24.33'



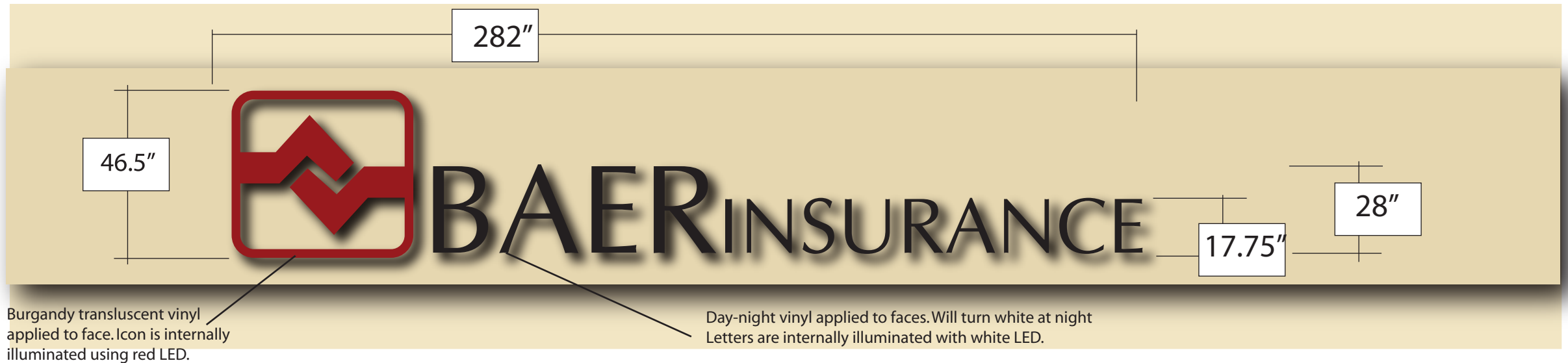
1 North Elevation
1/16" = 1'-0"



SOUTHEAST PARAPET-CHANNEL LETTERS

FINAL SPECS:9/13/07

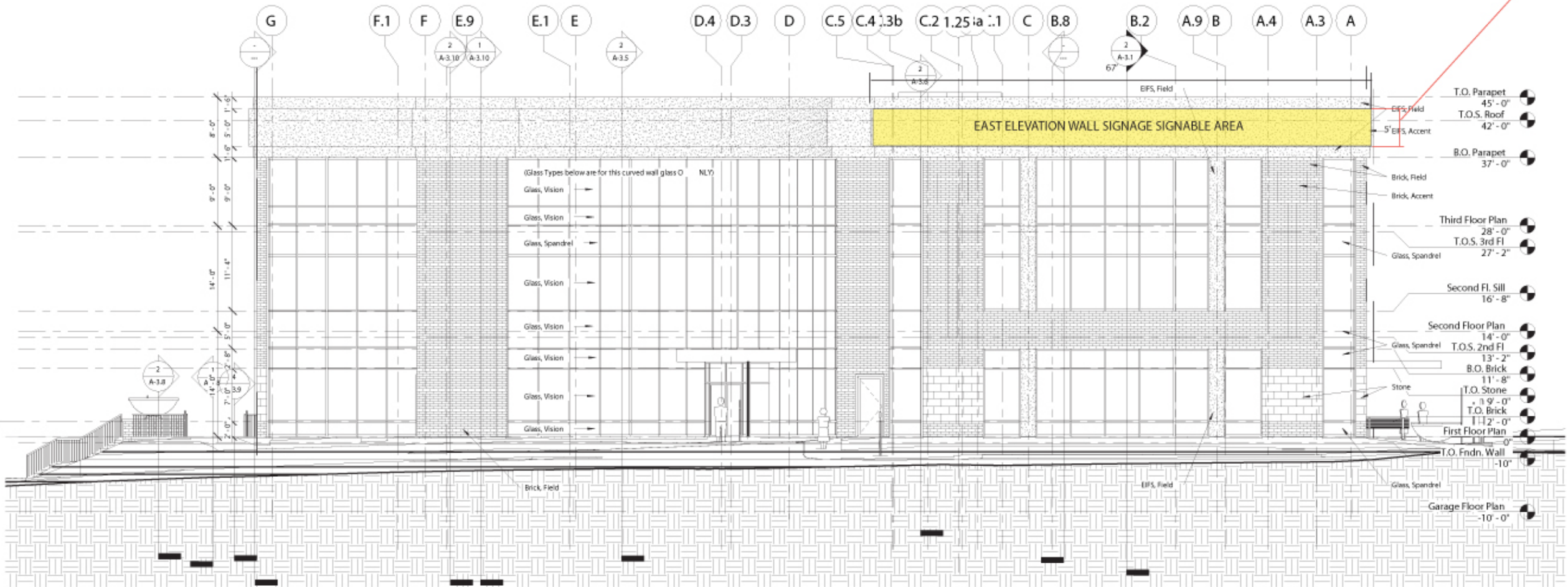
Front-lit faces. Lit using Power White LED @ 3/ft & Tetra Red LED @5/ft. All Letters are to have 5" deep returns



Total Square Footage-91.06sq.ft.

- 3m Dual Color Film
- 3m Burgandy Translucent Vinyl

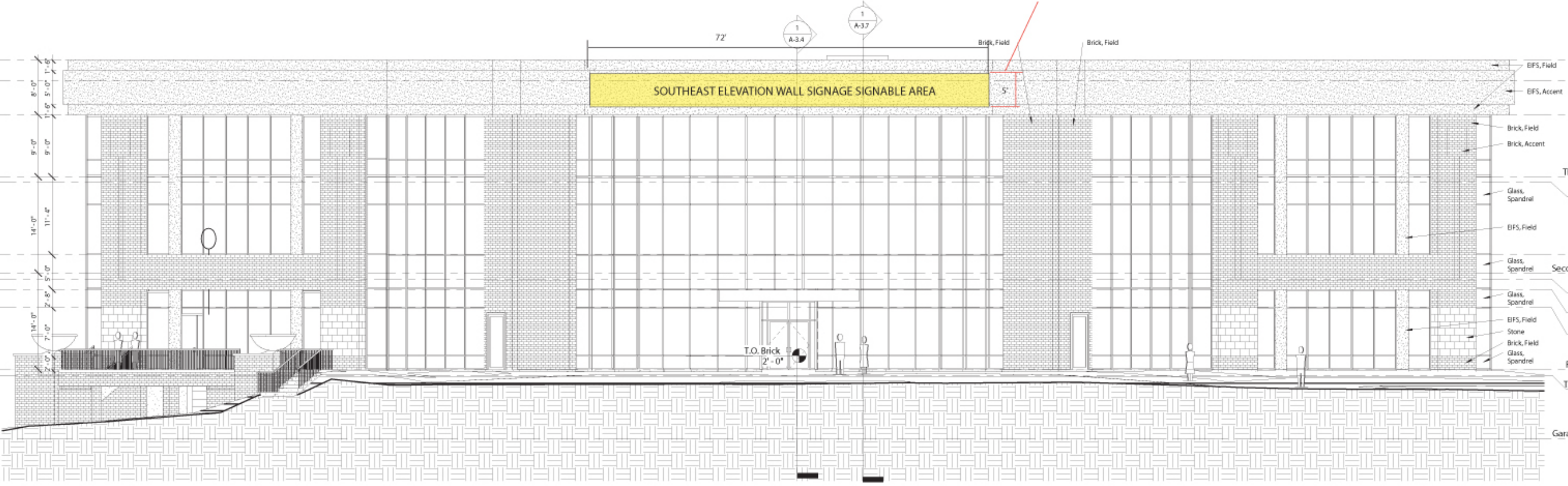
Signage is not to extend beyond top or bottom of middle band of parapet.



1 South Elevation
1/16" = 1'-0"

East Elevation Wall Signage- Signable area-5'x67' ~40%=134 sq.ft. total allowable square footage

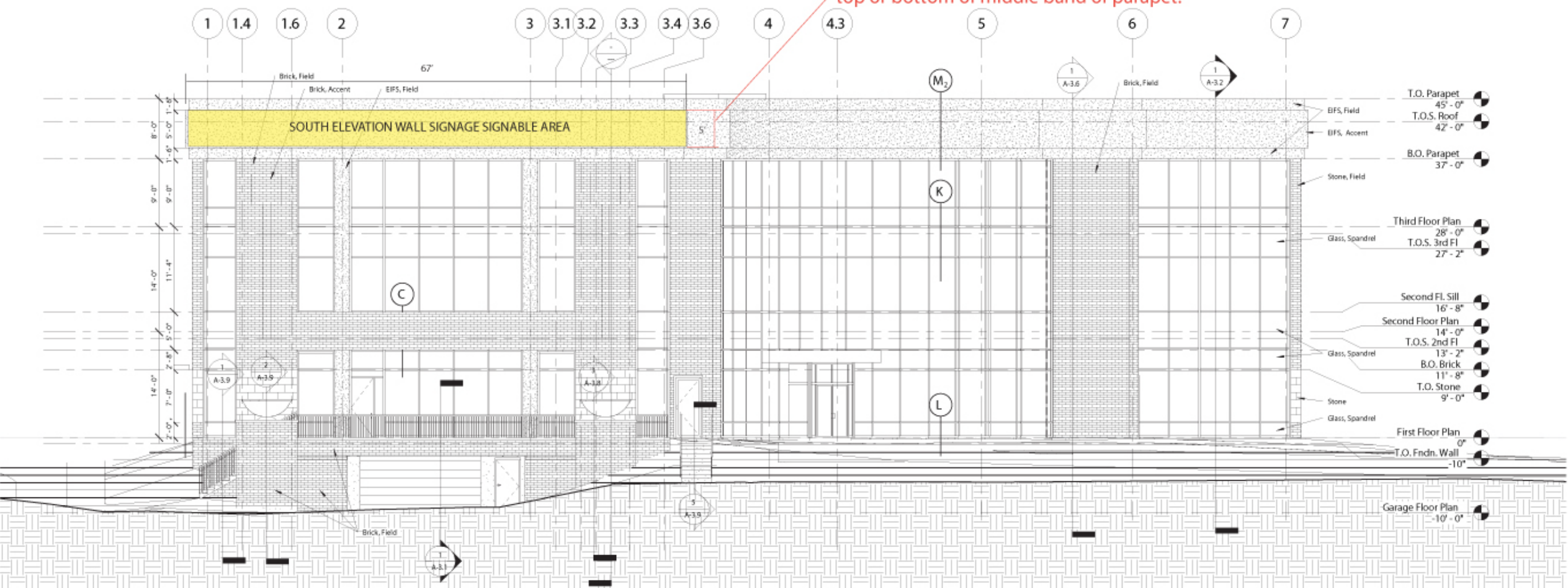
Signage is not to extend beyond top or bottom of middle band of parapet.



1 South Elevation
1/16" = 1'-0"

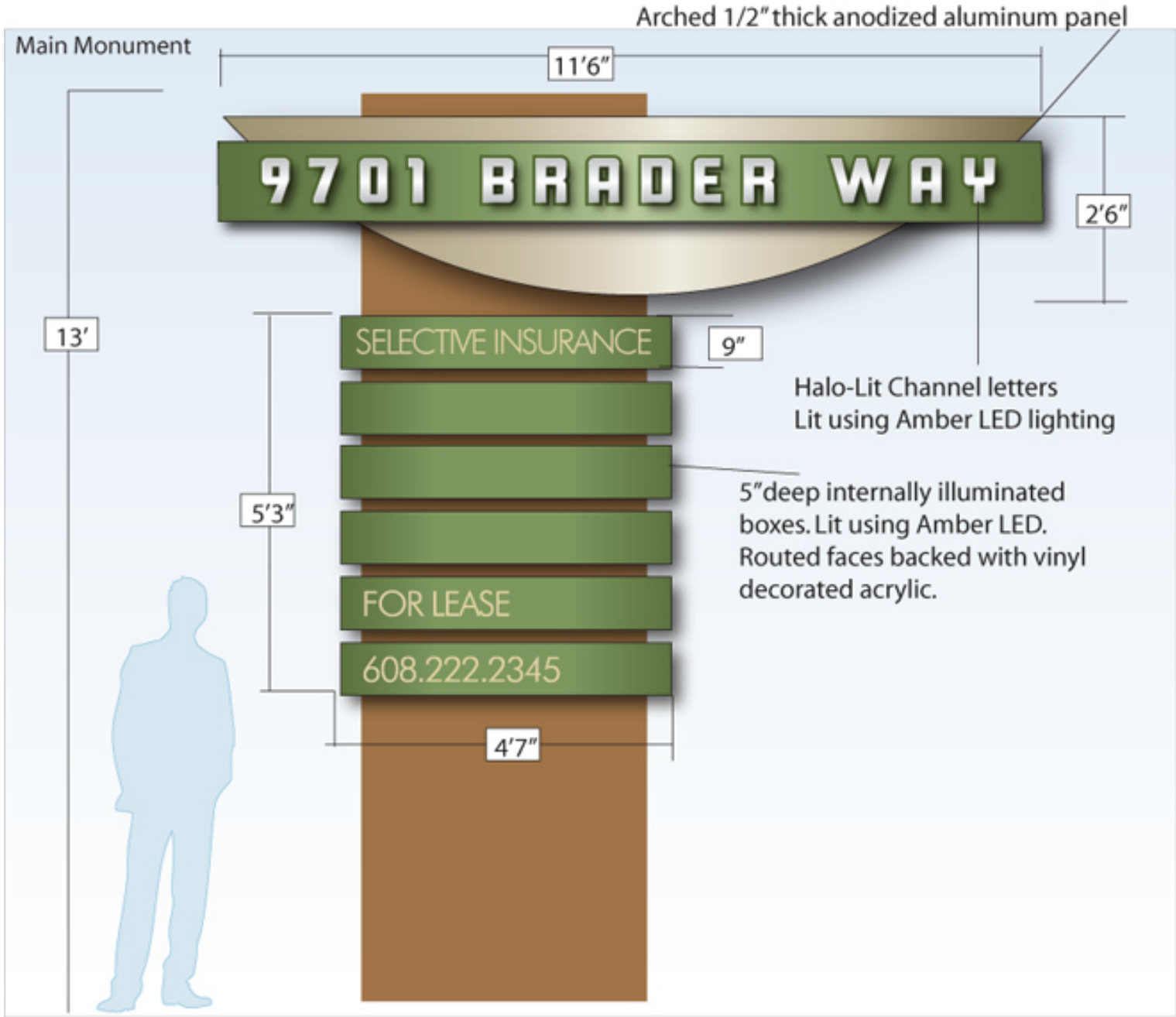
Southeast Elevation Wall Signage- Signable area-5'x72' ~40%=144 sq.ft. total allowable square footage

Signage is not to extend beyond top or bottom of middle band of parapet.

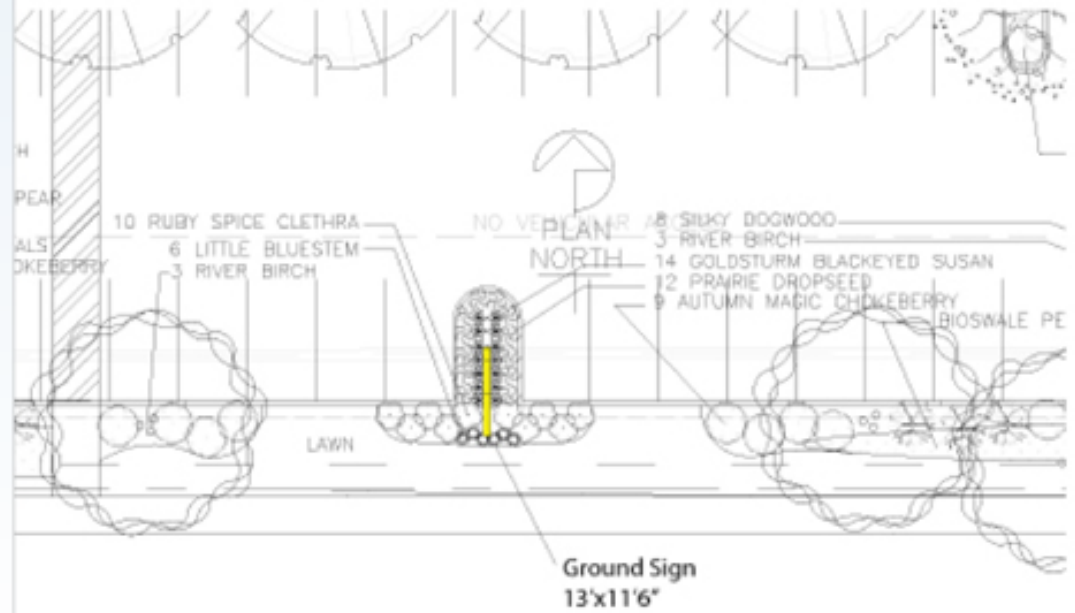


1 South Elevation
1/16" = 1'-0"

South Elevation Wall Signage- Signable area-5'x67' ~40%=134 sq.ft. total allowable square footage



- Matthews Green Urathane Paint
- Matthews Terra Cotta Urathane Paint
- Clear anodized aluminum
- Champagne anodized aluminum
- 3m Transluscent Ivory Vinyl



- Double-Sided monument sign
- Address numbers are halo-lit using Amber LED lighting.
- Internally illuminated tenant panels: Lit using Amber LED
- Routed aluminum faces backed with translucent vinyl decoration
- Total Square Feet- 24.33'

MINERAL POINT ROAD