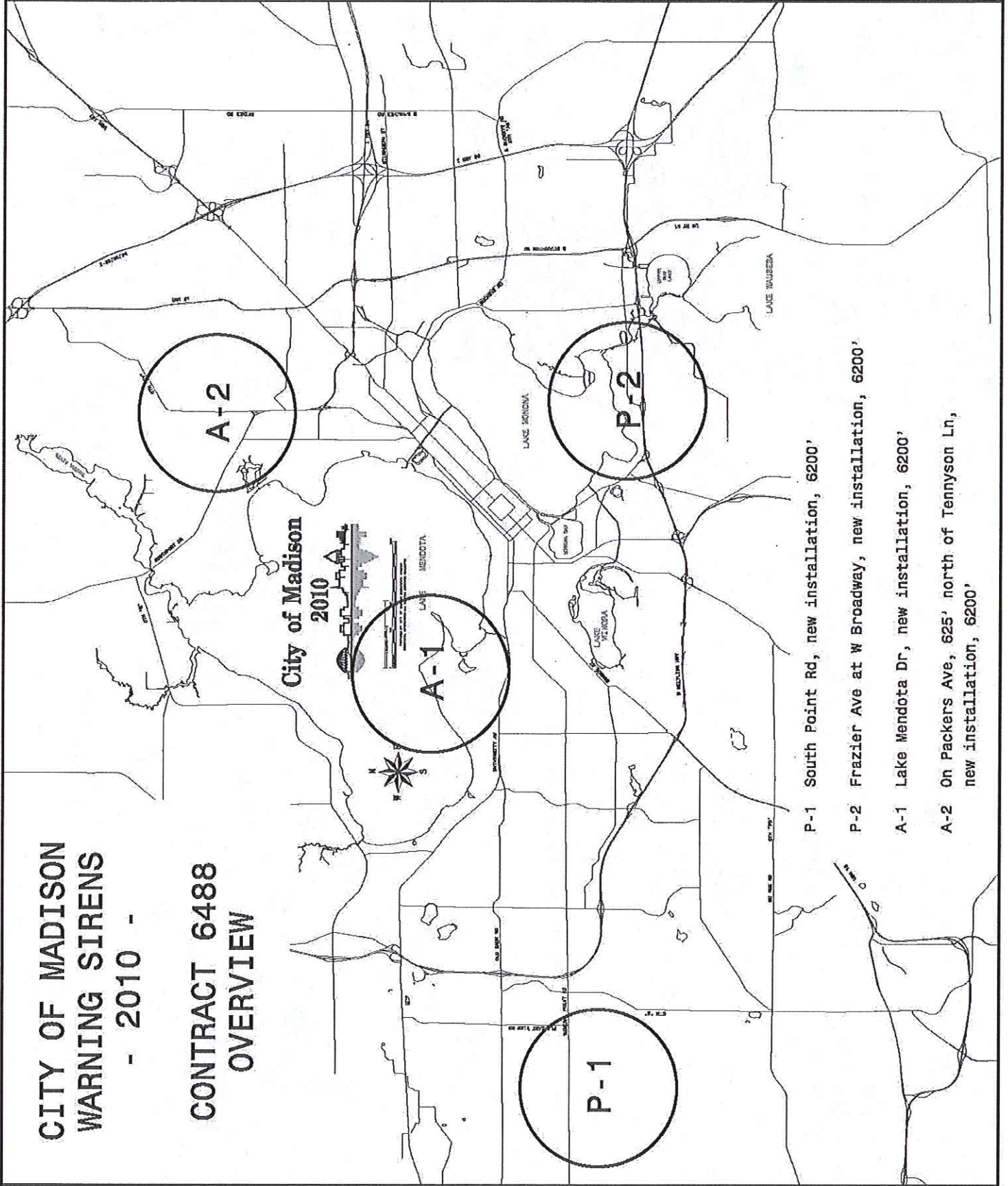


**CITY OF MADISON
WARNING SIRENS**

- 2010 -

**CONTRACT 6488
OVERVIEW**



- P-1 South Point Rd, new installation, 6200'
- P-2 Frazier Ave at W Broadway, new installation, 6200'
- A-1 Lake Mendota Dr, new installation, 6200'
- A-2 On Packers Ave, 625' north of Tennyson Ln, new installation, 6200'

SIREN P-1

FEDERAL SIGNAL 2001-130 OR EQUAL. ALL OTHER WRITTEN SPECIFICATIONS APPLY. ALL NEW INSTALLATION

PROJECT LIMITS ARE SHOWN CROSS HATCHED

CITY OF MADISON SURVEYORS TO MARK LOCATION OF POLE. 40' SOUTH OF SANITARY MAIN AND 25' WEST OF WATER MAIN ON CITY ENGINEERING PARCEL.

ENTRANCE ROAD - WEST SIDE PUBLIC WORKS FACILITY



SOUTH POINT RD

PINE LAWN PKWY

HARVEST MOON LN
CITY OF MADISON
TOWN OF MIDDLETON



SCALE: 1"=100'

SIREN P-2
FEDERAL SIGNAL 2001-130 OR EQUAL. ALL OTHER
WRITTEN SPECIFICATIONS APPLY. SEE METHOD OF
MEASUREMENT FOR SPECIFIC SITE EQUIPMENT
REQUIREMENTS AND LIST OF SALVAGED COMPONENTS
FROM SITE 162.

PROJECT LIMITS ARE SHOWN CROSS HATCHED

LOCATE SIREN POLE IN TERRACE, 20' EAST OF THE
END OF SIDEWALK

EXISTING MG&E POLE
W/TRANSFORMER

FRAZIER AVE

W BROADWAY

APPROX EDGE OF W BROADWAY R/W

RAYWOOD RD

MANA LN

MONONA
WATER
UTILITY
WELL

SOUTH TOWNE MALL

CITY OF MADISON
CITY OF MONONA

S BELTLINE HWY USH 12 AND 18

EXISTING SIREN 162:
SEE SPECIAL PROVISIONS FOR LIST
OF COMPONENTS TO BE SALVAGED
AND RE-USED ON NEW INSTALLATION P-2

MANGROVE LN

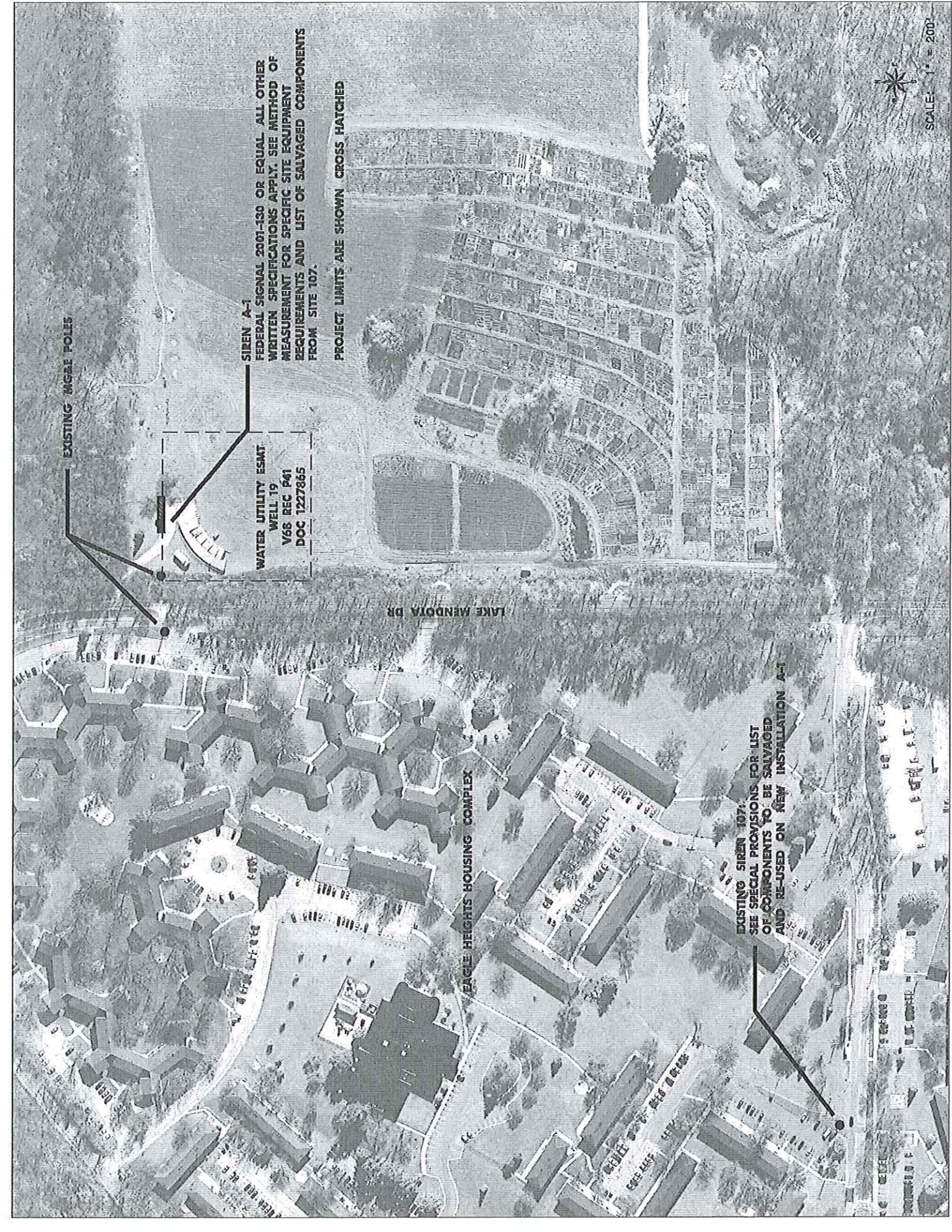
RAYWOOD RD

SOUTH TOWNE DR

ROYAL AVE



SCALE: 1" = 200'



EXISTING WIGRE POLIS

SIREN A-1

FEDERAL SIGNAL 2001-130 OR EQUAL ALL OTHER WRITTEN SPECIFICATIONS APPLY. SEE METHOD OF MEASUREMENT FOR SPECIFIC SITE EQUIPMENT REQUIREMENTS AND LIST OF SALVAGED COMPONENTS FROM SITE 107.

WATER UTILITY ESMT.
WELL 19
V68 REC #41
DOC 1227865

PROJECT LIMITS ARE SHOWN CROSS HATCHED

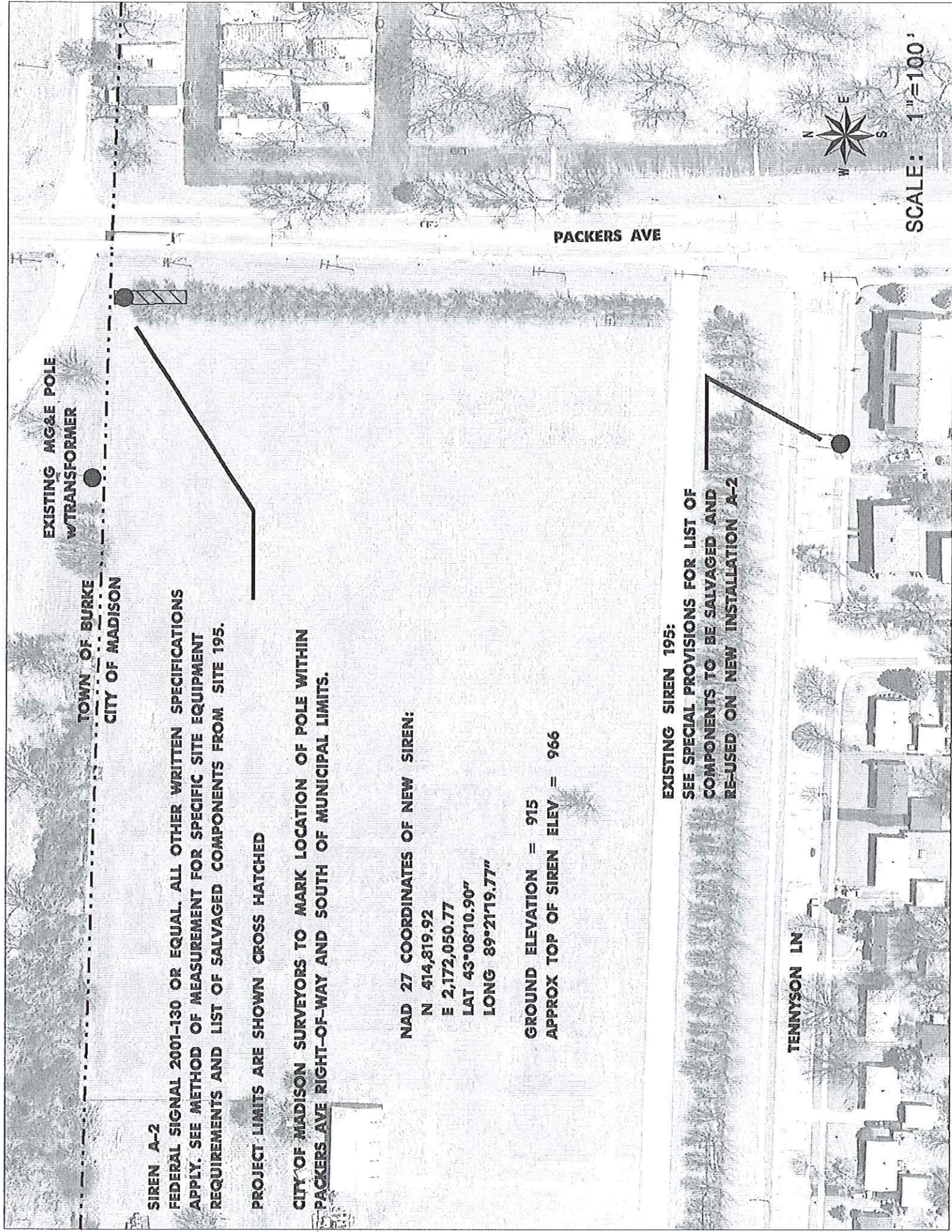
LAKE MENDOTA DR

EAGLE HEIGHTS HOUSING COMPLEX

EXISTING SIREN 107.
SEE SPECIAL PROVISIONS FOR LIST
OF COMPONENTS TO BE SALVAGED
AND RE-USED ON NEW INSTALLATION A-1



SCALE: 1" = 200'



EXISTING MG&E POLE
W/TRANSFORMER

TOWN OF BURKE
CITY OF MADISON

PACKERS AVE

TENNYSON LN



SCALE: 1"=100'

SIREN A-2

FEDERAL SIGNAL 2001-130 OR EQUAL. ALL OTHER WRITTEN SPECIFICATIONS APPLY. SEE METHOD OF MEASUREMENT FOR SPECIFIC SITE EQUIPMENT REQUIREMENTS AND LIST OF SALVAGED COMPONENTS FROM SITE 195.

PROJECT LIMITS ARE SHOWN CROSS HATCHED

CITY OF MADISON SURVEYORS TO MARK LOCATION OF POLE WITHIN PACKERS AVE RIGHT-OF-WAY AND SOUTH OF MUNICIPAL LIMITS.

NAD 27 COORDINATES OF NEW SIREN:

N 414,819.92
E 2,172,050.77
LAT 43°08'10.90"
LONG 89°21'19.77"

GROUND ELEVATION = 915
APPROX TOP OF SIREN ELEV = 966

EXISTING SIREN 195:
SEE SPECIAL PROVISIONS FOR LIST OF COMPONENTS TO BE SALVAGED AND RE-USED ON NEW INSTALLATION A-2

T7N, R8E

BLACK EARTH CREEK

LOWER BADGER MILL CREEK SEWER INTERCEPTOR PHASE 2-2010

TOWN OF MIDDLETON T7N, R8E

UPPER BADGER MILL CREEK STORMWATER MGMT PHASE 4 - 2010

JUNCTION RIDGE PEBBIKE OVERPASS 2013

2013 WIDEN SOUTH HIGH POINT RD

2011/12

2010/11

2010

2014

2010

2015

