



An aerial photograph of a residential neighborhood. A road, labeled 'LAKE MENDOTA DR', curves through the scene. To the right, a street labeled 'SPRING CT' branches off. The area contains several houses with brown roofs, green trees, and a body of water. Three white callout boxes with blue text are overlaid on the image, pointing to specific project locations: 'BOAT LAUNCH PAVEMENT' near the water, 'RETAINING WALL REPLACEMENT' near a house, and 'STORM SEWER REPLACEMENT' near a house. A yellow excavator is visible on a dirt patch on the left side of the road.

**BOAT LAUNCH  
PAVEMENT**

**RETAINING WALL  
REPLACEMENT**

**STORM SEWER  
REPLACEMENT**

**LAKE MENDOTA DR**

**SPRING CT**







NO MOTORBOATS  
OR OTHER  
MOTOR VEHICLES  
ALLOWED  
IN THIS AREA  
NO SWIMMING  
NO SKIING  
NO TUBING  
NO WAKEBOARDING  
NO WATER SKIING  
NO WAKE SURFING  
NO WAKEBOARDING  
NO WATER SKIING  
NO WAKE SURFING



ASPHALT  
BOAT LAUNCH

EXISTING STONE  
SHORELINE STABILIZATION

MAXIMUM SCOUR

SCOUR

BREAK IN RETAINING WALL

EXISTING LANDSCAPE BED

EXISTING RETAINING WALL

PULVERIZE AND RESURFACE  
ASPHALT BOAT LAUNCH  
ADD CURB AND GUTTER

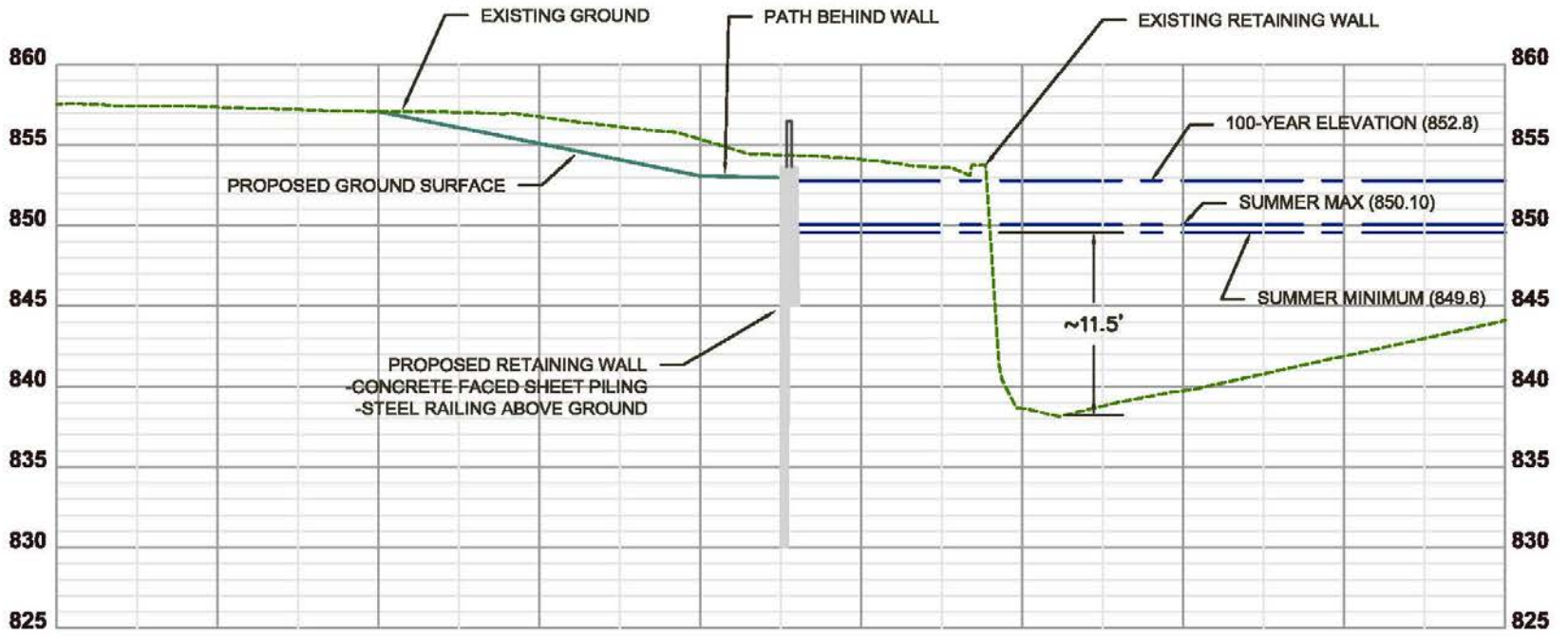
EXISTING SHORELINE  
STABILIZATION TO REMAIN

TURFMAT  
PATH

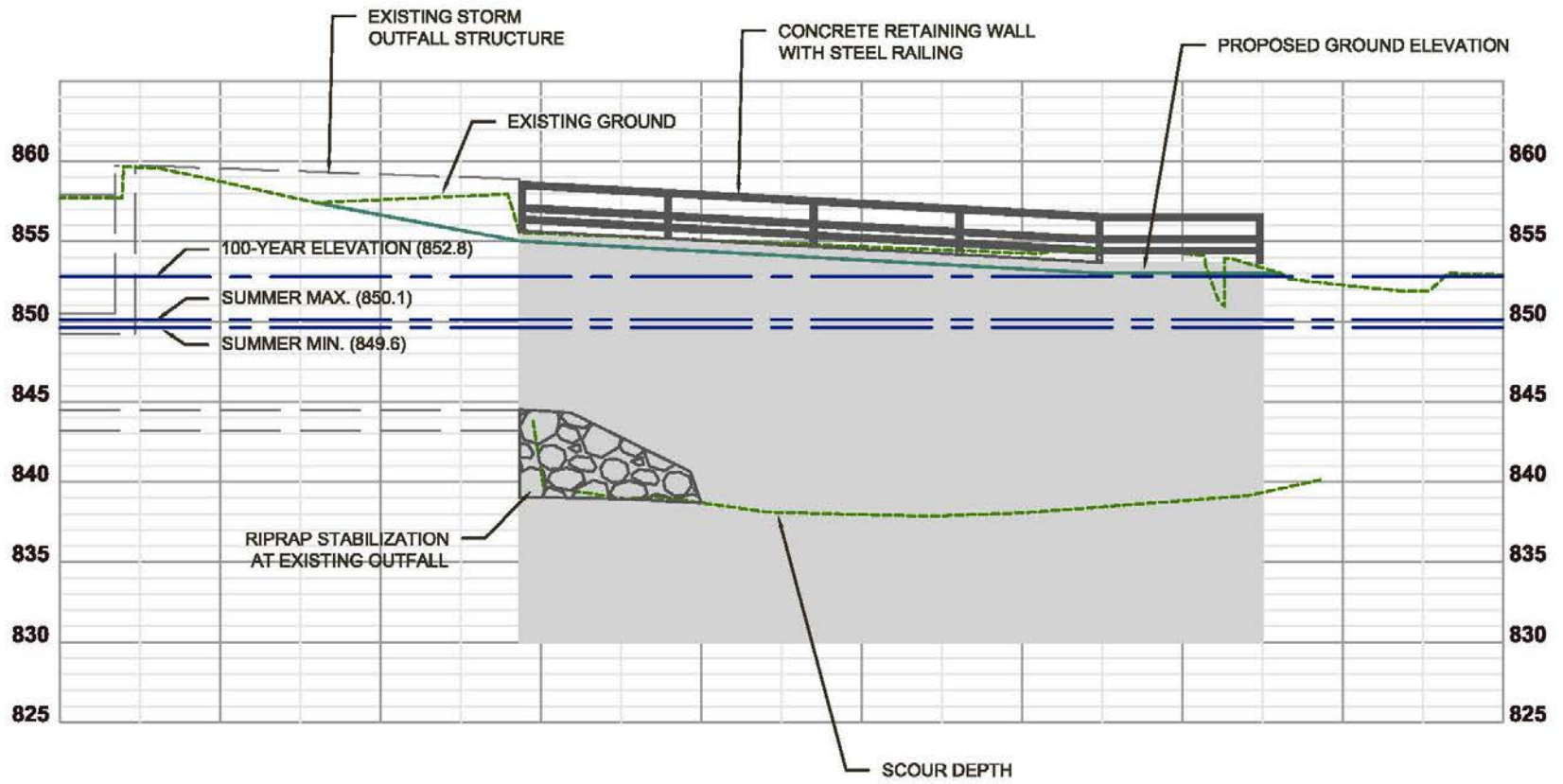
CONCRETE FACED  
RETAINING WALL WITH  
STEEL RAILING

RIPRAP  
STABILIZATION

STORM SEWER  
TO BE REPLACED







PULVERIZE AND RESURFACE  
ASPHALT BOAT LAUNCH  
ADD CURB AND GUTTER

TURFMAT  
PATH

EXISTING SHORELINE  
STABILIZATION TO REMAIN

CONCRETE FACED  
RETAINING WALL WITH  
STEEL RAILING

RIPRAP  
STABILIZATION

STORM SEWER  
TO BE REPLACED