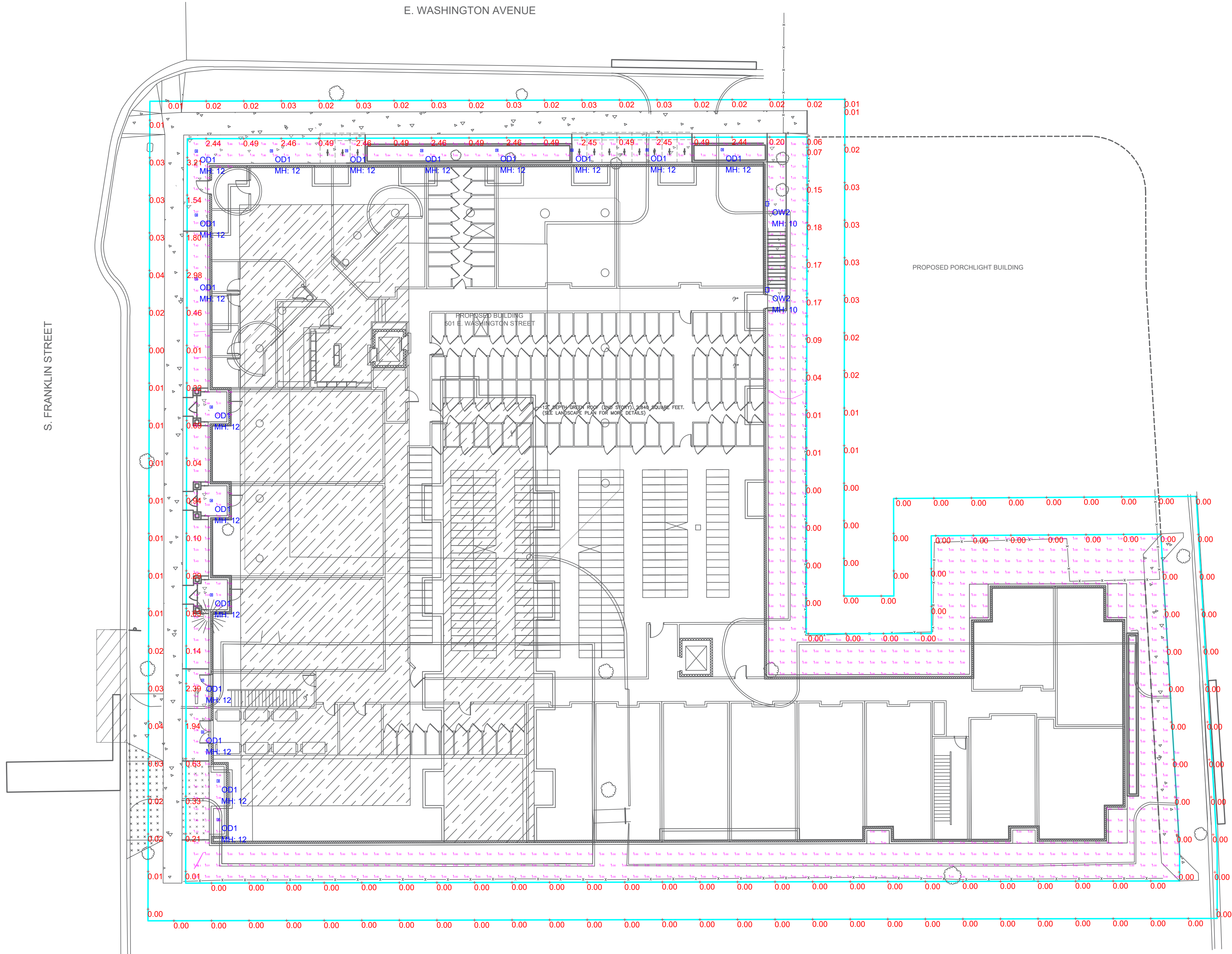



- NOTES:
- Customers are responsible for confirming mounting heights, fixture suspension types/ lengths, color temperature, CRI, linear fixture lengths, pole lengths, and bollard heights/ lengths prior to ordering.
 - Mounting height (MH) is measured from the bottom of the fixture to the floor.
 - This Lighting layout assumes the following unless values are specified and must be confirmed by the customer prior to ordering.
 - Room reflectance of 80, 50, 20 for standard ceilings and 50, 50, 20 for exposed ceilings
 - Wall sconces are mounted at 7' for calculation purposes. Customer must confirm desired mounting height before rough in.

Calculation Summary							
Label	CalcType	Units	Avg	Max	Min	Avg/Min	Max/Min
10 FEET OFF PRESUMED PROPERTY LINE	Illuminance	Fc	0.01	0.04	0.00	N.A.	N.A.
PRESUMED PROPERTY LINE	Illuminance	Fc	0.44	3.21	0.00	N.A.	N.A.
SITE	Illuminance	Fc	0.44	2.88	0.00	N.A.	N.A.

Luminaire Schedule								
Qty	Label	Arrangement	LLF	MFR	Description	Lum. Watts	Total Watts	Lum. Lumens
17	OD1	SINGLE	0.950	LITHONIA	LDN4SQ xxK_05 LS4 (Trim Color) (Trim Finish) (Flange Color) MVOLT EZ1 90CRI	5.74	97.58	433
2	OW2	SINGLE	0.950	LITHONIA	WDGE2 LED P0 xxK 80CRI T1S	6.8946	13.789	699





REVISIONS		DATE	COMMENTS
#			

DRAWN BY : DC

DATE : APR 30, 2025

SCALE : 1/16" = 1'-0"

501 E. WASHINGTON AVE.

MADISON, WISCONSIN

SITE LIGHTING LAYOUT



WDGE2 LED

Architectural Wall Sconce

Precision Refractive Optic



Catalog
Number

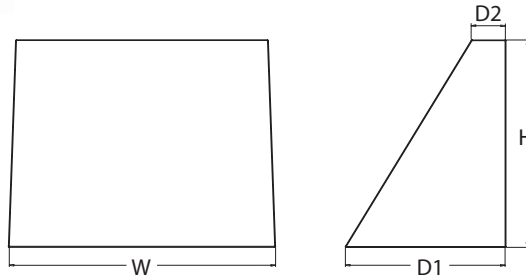
Notes

Type

Hit the Tab key or mouse over the page to see all interactive elements.

Specifications

Depth (D1):	7"
Depth (D2):	1.5"
Height:	9"
Width:	11.5"
Weight: (without options)	13.5 lbs



Introduction

The WDGE2 LED family is designed to meet specifier's every wall-mounted lighting need in a widely accepted shape that blends with any architecture. The clean rectilinear design comes in four sizes with lumen packages ranging from 1,200 to 25,000 lumens, providing a true site-wide solution. Embedded with nLight® AIR wireless controls, the WDGE2 family provides additional energy savings and code compliance.

WDGE2 with industry leading precision refractive optics provides great uniform distribution and optical control. When combined with multiple integrated emergency battery backup options, including an 18W cold temperature option, the WDGE2 becomes the ideal wall-mounted lighting solution for pedestrian scale applications in any environment.



Items marked by a shaded background qualify for the Design Select program and ship in 15 days or less. To learn more about Design Select, visit www.acuitybrands.com/designselect.
*See ordering tree for details

WDGE LED Family Overview

Luminaire	Optics	Standard EM, 0°C	Cold EM, -20°C	Sensor	Approximate Lumens (4000K, 80CRI)						
					P0	P1	P2	P3	P4	P5	P6
WDGE1 LED	Visual Comfort	4W		--	750	1,200	2,000	--	--	--	--
WDGE2 LED	Visual Comfort	10W	18W	Standalone / nLight	--	1,200	2,000	3,000	4,500	6,000	--
WDGE2 LED	Precision Refractive	10W	18W	Standalone / nLight	700	1,200	2,000	3,200	4,200	--	--
WDGE3 LED	Precision Refractive	15W	18W	Standalone / nLight	--	7,500	8,500	10,000	12,000	--	--
WDGE4 LED	Precision Refractive			Standalone / nLight	--	12,000	16,000	18,000	20,000	22,000	25,000

Ordering Information

EXAMPLE: WDGE2 LED P3 40K 80CRI T3M MVOLT SRM DDBXD

Series	Package	Color Temperature	CRI	Distribution	Voltage	Mounting
WDGE2 LED	P0 ¹	27K 2700K	70CRI ⁴	T1S Type I Short	MVOLT	Shipped included SRM Surface mounting bracket ICW Indirect Canopy/Ceiling Washer bracket (dry/damp locations only) ⁶ Shipped separately AWS 3/8inch Architectural wall spacer ⁷ PBBW Surface-mounted back box (top, left, right conduit entry). Use when there is no junction box available ⁷
	P1 ²	30K 3000K	80CRI	T2M Type II Medium	347 ⁵	
	P2 ²	40K 4000K	LW ³ Limited Wavelength	T3M Type III Medium	480 ⁵	
	P3 ²	50K 5000K		T4M Type IV Medium		
	P4 ²	AMB ³ Amber		TFTM Forward Throw Medium		

Options			Finish	
E10WH	Emergency battery backup, Certified in CA Title 20 MAEDBS (10W, 5°C min)	Standalone Sensors/Controls PIR Bi-level (100/35%) motion sensor for 8-15' mounting heights. Intended for use on switched circuits with external dusk to dawn switching. PIRH Bi-level (100/35%) motion sensor for 15-30' mounting heights. Intended for use on switched circuits with external dusk to dawn switching PIR1FC3V Bi-level (100/35%) motion sensor for 8-15' mounting heights with photocell pre-programmed for dusk to dawn operation. PIRH1FC3V Bi-level (100/35%) motion sensor for 15-30' mounting heights with photocell pre-programmed for dusk to dawn operation. Networked Sensors/Controls NLTAIR2 PIR Embedded wireless controls by nLight with Passive Infrared Occ sensor and on/off photocell for 8-15' mounting heights. NLTAIR2 PIRH Embedded wireless controls by nLight with Passive Infrared Occ sensor and on/off photocell for 15-30' mounting heights. NLTAIREM2 PIR Embedded wireless controls by nLight with UL924 listed emergency operation, Passive Infrared Occ sensor and on/off photocell for 8-15' mounting heights NLTAIREM2 PIRH Embedded wireless controls by nLight with UL924 listed emergency operation, Passive Infrared Occ sensor and on/off photocell for 15-30' mounting heights. See page 4 for out of box functionality		
E20WC	Emergency battery backup, Certified in CA Title 20 MAEDBS (18W, -20°C min)			
PE	Photocell, Button Type ⁸			
DMG	0-10V dimming wires pulled outside fixture (for use with an external control, ordered separately) ⁹			
BCE	Bottom conduit entry for back box (PBBW). Total of 4 entry points.			
CCE	Coastal Construction ⁷			
			DDBXD	Dark bronze
			DBLXD	Black
			DNAXD	Natural aluminum
			DWHXD	White
			DSSXD	Sandstone
			DBBTXD	Textured dark bronze
			DBLBXD	Textured black
			DNATXD	Textured natural aluminum
			DWHGXD	Textured white
			DSSTXD	Textured sandstone



COMMERCIAL OUTDOOR

One Lithonia Way • Conyers, Georgia 30012 • Phone: 1-800-705-SERV (7378) • www.lithonia.com
© 2019-2025 Acuity Brands Lighting, Inc. All rights reserved.

WDGE2 LED
Rev. 04/21/25

Accessories

Ordered and shipped separately.

WDGEAWS DDBXD U	WDGE 3/8inch Architectural Wall Spacer (specify finish)
WDGE2PBBW DDBXD U	WDGE2 surface-mounted back box (specify finish)

NOTES

- 1 P0 option not available with sensors/controls.
- 2 P1-P4 not available with AMB and LW.
- 3 AMB and LW always go together.
- 4 70CRI only available with T3M and T4M.
- 5 347V and 480V not available with E10WH or E20WC.
- 6 Not qualified for DLC. Not available with emergency battery backup or sensors/controls.
- 7 For PBBW and AWS with CCE option, require an RFA.
- 8 PE not available in 480V or with sensors/controls.
- 9 DMG option not available with sensors/controls.

Performance Data

Lumen Output

Lumen values are from photometric tests performed in accordance with IESNA LM-79-08. Data is considered to be representative of the configurations shown, within the tolerances allowed by Lighting Facts. Contact factory for performance data on any configurations not shown here.

Performance Package	System Watts	Dist. Type	27K (2700K, 80 CRI)					30K (3000K, 80 CRI)					40K (4000K, 80 CRI)					50K (5000K, 80 CRI)					Amber (Limited Wavelength)				
			Lumens	LPW	B	U	G	Lumens	LPW	B	U	G	Lumens	LPW	B	U	G	Lumens	LPW	B	U	G	Lumens	LPW	B	U	G
P0	7W	T1S	636	92	0	0	0	666	97	0	0	0	699	101	0	0	1	691	100	0	0	1	712	47	0	0	1
		T2M	662	96	0	0	0	693	101	0	0	0	728	106	0	0	0	719	104	0	0	0	741	48	0	0	0
		T3M	662	96	0	0	0	693	101	0	0	0	728	106	0	0	0	719	104	0	0	0	741	48	0	0	0
		T4M	648	94	0	0	0	679	98	0	0	0	712	103	0	0	0	704	102	0	0	0	726	47	0	0	0
		TFTM	652	95	0	0	0	683	99	0	0	0	717	104	0	0	0	708	103	0	0	0	730	48	0	0	1
P1	11W	T1S	1,105	99	0	0	1	1,157	104	0	0	1	1,215	109	0	0	1	1,200	107	0	0	1					
		T2M	1,150	103	0	0	1	1,204	108	0	0	1	1,264	113	0	0	1	1,249	112	0	0	1					
		T3M	1,150	103	0	0	1	1,205	108	0	0	1	1,265	113	0	0	1	1,250	112	0	0	1					
		T4M	1,126	101	0	0	1	1,179	106	0	0	1	1,238	111	0	0	1	1,223	110	0	0	1					
		TFTM	1,133	101	0	0	1	1,186	106	0	0	1	1,245	112	0	0	1	1,230	110	0	0	1					
P2	19W	T1S	1,801	95	1	0	1	1,886	99	1	0	1	1,981	104	1	0	1	1,957	103	1	0	1					
		T2M	1,875	99	1	0	1	1,963	103	1	0	1	2,061	109	1	0	1	2,037	107	1	0	1					
		T3M	1,876	99	1	0	1	1,964	103	1	0	1	2,062	109	1	0	1	2,038	107	1	0	1					
		T4M	1,836	97	1	0	1	1,922	101	1	0	1	2,018	106	1	0	1	1,994	105	1	0	1					
		TFTM	1,847	97	1	0	1	1,934	102	1	0	1	2,030	107	1	0	1	2,006	106	1	0	1					
P3	32W	T1S	2,809	87	1	0	1	2,942	92	1	0	1	3,089	96	1	0	1	3,052	95	1	0	1					
		T2M	2,924	91	1	0	1	3,062	95	1	0	1	3,215	100	1	0	1	3,176	99	1	0	1					
		T3M	2,925	91	1	0	1	3,063	95	1	0	1	3,216	100	1	0	1	3,177	99	1	0	1					
		T4M	2,862	89	1	0	1	2,997	93	1	0	1	3,147	98	1	0	1	3,110	97	1	0	1					
		TFTM	2,880	90	1	0	1	3,015	94	1	0	1	3,166	99	1	0	1	3,128	97	1	0	1					
P4	47W	T1S	3,729	80	1	0	1	3,904	84	1	0	1	4,099	88	1	0	1	4,051	87	1	0	1					
		T2M	3,881	83	1	0	1	4,063	87	1	0	1	4,267	91	1	0	1	4,216	90	1	0	1					
		T3M	3,882	83	1	0	1	4,065	87	1	0	1	4,268	91	1	0	1	4,217	90	1	0	1					
		T4M	3,799	81	1	0	1	3,978	85	1	0	1	4,177	90	1	0	1	4,127	88	1	0	1					
		TFTM	3,822	82	1	0	1	4,002	86	1	0	1	4,202	90	1	0	1	4,152	89	1	0	1					

Performance Package	System Watts	Dist. Type	27K (2700K, 70 CRI)					30K (3000K, 70 CRI)					40K (4000K, 70 CRI)					50K (5000K, 70 CRI)				
			Lumens	LPW	B	U	G	Lumens	LPW	B	U	G	Lumens	LPW	B	U	G	Lumens	LPW	B	U	G
P0	7W	T3M	737	107	0	0	0	763	111	0	0	0	822	119	0	0	0	832	121	0	0	1
		T4M	721	105	0	0	0	746	108	0	0	0	804	117	0	0	1	814	118	0	0	1
P1	11W	T3M	1,280	115	0	0	1	1,325	119	0	0	1	1,427	128	1	0	1	1,445	129	1	0	1
		T4M	1,253	112	0	0	1	1,297	116	0	0	1	1,397	125	0	0	1	1,415	127	0	0	1
P2	19W	T3M	2,087	110	1	0	1	2,160	114	1	0	1	2,327	123	1	0	1	2,357	124	1	0	1
		T4M	2,042	108	1	0	1	2,114	111	1	0	1	2,278	120	1	0	1	2,306	121	1	0	1
P3	32W	T3M	3,254	101	1	0	1	3,369	105	1	0	1	3,629	113	1	0	1	3,675	114	1	0	1
		T4M	3,185	99	1	0	1	3,297	103	1	0	1	3,552	111	1	0	1	3,597	112	1	0	1
P4	47W	T3M	4,319	93	1	0	1	4,471	96	1	0	1	4,817	103	1	0	2	4,878	105	1	0	2
		T4M	4,227	91	1	0	1	4,376	94	1	0	2	4,714	101	1	0	2	4,774	102	1	0	2

Electrical Load

Performance Package	System Watts	Current (A)					
		120Vac	208Vac	240Vac	277Vac	347Vac	480Vac
P0	7.0	0.061	0.042	0.04	0.039	--	--
	9.0	--	--	--	--	0.031	0.021
P1	11.0	0.100	0.064	0.059	0.054	--	--
	14.1	--	--	--	--	0.046	0.031
P2	19.0	0.168	0.106	0.095	0.083	--	--
	22.8	--	--	--	--	0.067	0.050
P3	32.0	0.284	0.163	0.144	0.131	--	--
	37.1	--	--	--	--	0.107	0.079
P4	47.0	0.412	0.234	0.207	0.185	--	--
	53.5	--	--	--	--	0.153	0.112

Lumen Output in Emergency Mode
(4000K, 80 CRI, T3M)

Option	Lumens
E10WH	1,358
E20WC	2,230

Lumen Ambient Temperature (LAT) Multipliers

Use these factors to determine relative lumen output for average ambient temperatures from 0-40°C (32-104°F).

Ambient		Lumen Multiplier
0°C	32°F	1.03
10°C	50°F	1.02
20°C	68°F	1.01
25°C	77°F	1.00
30°C	86°F	0.99
40°C	104°F	0.97

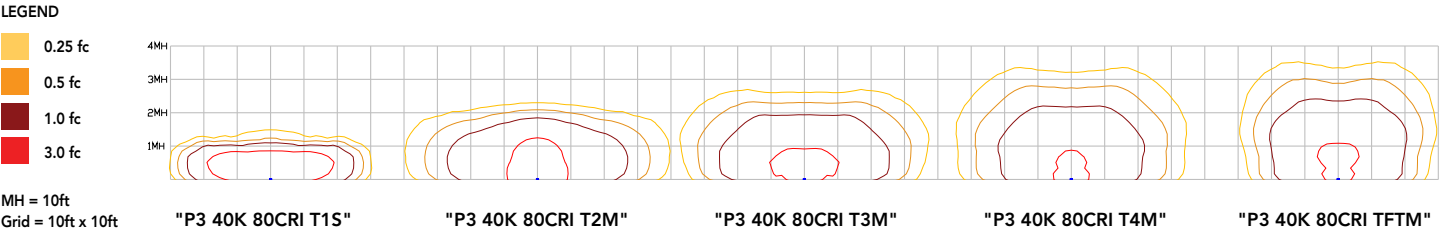
Projected LED Lumen Maintenance

Data references the extrapolated performance projections for the platforms noted in a 25°C ambient, based on 10,000 hours of LED testing (tested per IESNA LM-80-08 and projected per IESNA TM-21-11).
To calculate LLF, use the lumen maintenance factor that corresponds to the desired number of operating hours below. For other lumen maintenance values, contact factory.

Operating Hours	0	25,000	50,000	100,000
Lumen Maintenance Factor	1.0	>0.96	>0.93	>0.87

Photometric Diagrams

To see complete photometric reports or download .ies files for this product, visit the Lithonia Lighting WDGE LED homepage. Tested in accordance with IESNA LM-79 and LM-80 standards.



Emergency Egress Options

Emergency Battery Backup

The emergency battery backup is integral to the luminaire — no external housing required! This design provides reliable emergency operation while maintaining the aesthetics of the product. All emergency battery backup configurations include an independent secondary driver with an integral relay to immediately detect loss of normal power and automatically energize the luminaire. The emergency battery will power the luminaire for a minimum duration of 90 minutes (maximum duration of three hours) from the time normal power is lost and maintain a minimum of 60% of the light output at the end of 90minutes.
Applicable codes: NFPA 70/NEC – section 700.16, NFPA 101 Life Safety Code Section 7.9

Motion/Ambient Sensor (PIR, PIRH)

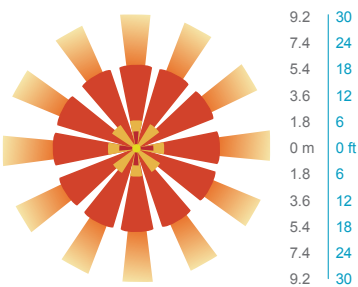
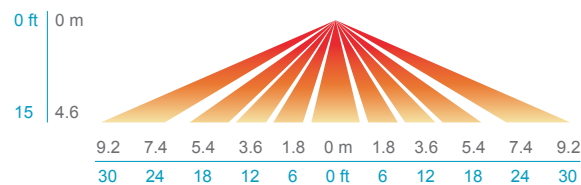
Motion/Ambient sensor (Sensor Switch MSOD) is integrated into the the luminaire. The sensor provides both Motion and Daylight based dimming of the luminaire. For motion detection, the sensor utilizes 100% Digital Passive Infrared (PIR) technology that is tuned for walking size motion while preventing false tripping from the environment. The integrated photocell enables additional energy savings during daytime periods when there is sufficient daylight. Optimize sensor coverage by either selecting PIR or PIRH option. PIR option comes with a sensor lens that is optimized to provide maximum coverage for mounting heights between 8-15ft, while PIRH is optimized for 15-40ft mounting height.

Networked Control (NLTAIR2)

nLight® AIR is a wireless lighting controls platform that allows for seamless integration of both indoor and outdoor luminaires. Five-tier security architecture, 900 MHz wireless communication and app (CLAIRITY™ Pro) based configurability combined together make nLight® AIR a secure, reliable and easy to use platform.

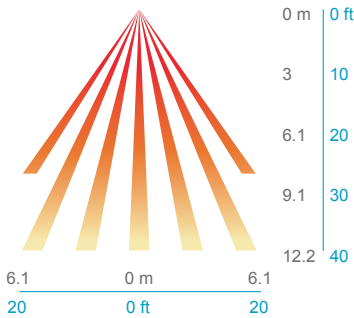
PIR

HIGH VIEW

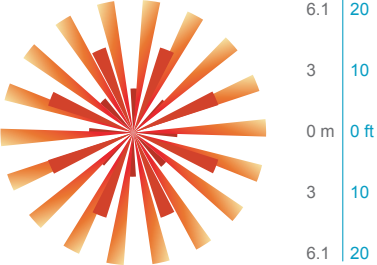


PIRH

SIDE VIEW



TOP VIEW



Option	Dim Level	High Level (when triggered)	Photocell Operation	Motion Time Delay	Ramp-down Time	Ramp-up Time
PIR or PIRH	Motion - 3V (37% of full output) Photocell - 0V (turned off)	10V (100% output)	Enabled @ 5fc	5 min	5 min	Motion - 3 sec Photocell - 45 sec
PIR1FC3V, PIRH1FC3V	Motion - 3V (37% of full output) Photocell - 0V (turned off)	10V (100% output)	Enabled @ 1fc	5 min	5 min	Motion - 3 sec Photocell - 45 sec
NLTAIR2 PIR, NLTAIR2 PIRH, NLTAIREM2 PIR, NLTAIREM2 PIRH (out of box)	Motion - 3V (37% of full output) Photocell - 0V (turned off)	10V (100% output)	Enabled @ 5fc	7.5 min	5 min	Motion - 3 sec Photocell - 45 sec

UL 924 Response – nLight AIR Devices with EM Option

- NLTAIREM2 devices will remain at their high-end trim and ignore wireless lighting control commands, unless a normal-power-sensed (NPS) broadcast is received at least every 8 seconds.
- Using the CLAIRITY+ mobile app, NLTAIREM2 devices must be associated with a group that includes a normal power sensing device to receive NPS broadcasts.
- The non-emergency devices, NLTAIR2 PIR and NLTAIR2 PIRH, with version 3.4 or later firmware can be used for normal power sensing.



Motion/Ambient Sensor

D = 7"

H = 9" (Standalone controls)

11" (nLight AIR controls, 2" antenna will be pointing down behind the sensor)

W = 11.5"



PBBW – Surface-Mounted Back Box

Use when there is no junction box available.

D = 1.75"

H = 9"

W = 11.5"



AWS – 3/8inch Architectural Wall Spacer

D = 0.38"

H = 4.4"

W = 7.5"

FEATURES & SPECIFICATIONS

INTENDED USE

Common architectural look, with clean rectilinear shape, of the WDGE LED was designed to blend with any type of construction, whether it be tilt-up, frame or brick. Applications include commercial offices, warehouses, hospitals, schools, malls, restaurants, and other commercial buildings.

CONSTRUCTION

The single-piece die-cast aluminum housing integrates secondary heat sinks to optimize thermal transfer from the internal light engine heat sinks and promote long life. The driver is mounted in direct contact with the casting for a low operating temperature and long life. The die-cast door frame is fully gasketed with a one-piece solid silicone gasket to keep out moisture and dust, providing an IP66 rating for the luminaire.

FINISH

Exterior painted parts are protected by a zinc-infused Super Durable TGIC thermoset powder coat finish that provides superior resistance to corrosion and weathering. A tightly controlled multi-stage process ensures a 3 mils thickness for a finish that can withstand extreme climate changes without cracking or peeling. Standard Super Durable colors include dark bronze, black, natural aluminum, sandstone and white. Available in textured and non-textured finishes.

OPTICS

Individually formed acrylic lenses are engineered for superior application efficiency which maximizes the light in the areas where it is most needed. The WDGE LED has zero uplight and qualifies as a Nighttime Friendly™ product, meaning it is consistent with the LEED® and Green Globes™ criteria for eliminating wasteful uplight.

ELECTRICAL

Light engine consists of high-efficacy LEDs mounted to metal-core circuit boards to maximize heat dissipation and promote long life (up to L91/100,000 hours at 25°C). The electronic driver has a power factor of >90%, THD <20%. Luminaire comes with built in 6kV surge protection, which meets a minimum Category C low exposure (per ANSI/IEEE C62.41.2). Fixture ships standard with 0-10v dimmable driver.

INSTALLATION

A universal mounting plate with integral mounting support arms allows the fixture to hinge down for easy access while making wiring connections. The 3/8" Architectural Wall Spacer (AWS) can be used to create a floating appearance or to accommodate small imperfections in the wall surface. The ICW option can be used to mount the luminaire inverted for indirect lighting in dry and damp locations. Design can withstand up to a 1.5 G vibration load rating per ANSI C136.31.

LISTINGS

CSA certified to U.S. and Canadian standards. Luminaire is IP66 rated. PIR options are rated for wet location. Rated for -40°C minimum ambient. DesignLights Consortium® (DLC) Premium qualified product and DLC qualified product. Not all versions of this product may be DLC Premium qualified or DLC qualified. Please check the DLC Qualified Products List at www.designlights.org/QPL to confirm which versions are qualified. International Dark-Sky Association (IDA) Fixture Seal of Approval (FSA) is available for all products on this page utilizing 2700K and 3000K color temperature only and SRM mounting only.

GOVERNMENT PROCUREMENT

BABA – Build America Buy America: Product qualifies as produced in the United States under the definitions of the Build America, Buy America Act. Please refer to www.acuitybrands.com/buy-american for additional information.

WARRANTY

5-year limited warranty. This is the only warranty provided and no other statements in this specification sheet create any warranty of any kind. All other express and implied warranties are disclaimed. Complete warranty terms located at: www.acuitybrands.com/support/warranty/terms-and-conditions

Note: Actual performance may differ as a result of end-user environment and application. All values are design or typical values, measured under laboratory conditions at 25 °C. Specifications subject to change without notice.

FEATURES & SPECIFICATIONS

INTENDED USE — Typical applications include corridors, lobbies, conference rooms and private offices.

CONSTRUCTION — Galvanized steel mounting/plaster frame; galvanized steel junction box with bottom-hinged access covers and spring latches. Reflectors are retained by torsion springs. Vertically adjustable mounting brackets with commercial bar hangers provide 3-3/4" total adjustment. Two combination 1/2"-3/4" and four 1/2" knockouts for straight-through conduit runs. Capacity: 8 (4 in, 4 out). No. 12 AWG conductors, rated for 90°C.

Accommodates 12"-24" joist spacing.

Passive cooling thermal management for 25°C standard. Light engine and drivers are accessible from above or below ceiling.

Ceiling thickness range 1/2" to 1-1/2".

OPTICS — 55° cutoff

80CRI standard (90CRI optional)

ELECTRICAL — Adjustable lumen output with four module options.

MVOLT 120/277V 50/60Hz driver (0-10V & 120V Phase Dimming to 10% or 1% min dimming level). DALI driver dimming to 1% also available

FCC CFR Title 47 Part 15 Class A for lower lumen range. FCC CFR Title 47 Part 15

Class B for higher lumen range.

L80 @ 60,000 hours

3 SDCM

LISTINGS — Certified to US and Canadian safety standards. Wet location, requires covered ceiling. Wallwash suitable for damp locations only.

WARRANTY — 5-year limited warranty. This is the only warranty provided and no other statements in this specification sheet create any warranty of any kind. All other express and implied warranties are disclaimed. Complete warranty terms located at:

www.acuitybrands.com/support/warranty/terms-and-conditions

Note: Actual performance may differ as a result of end-user environment and application.

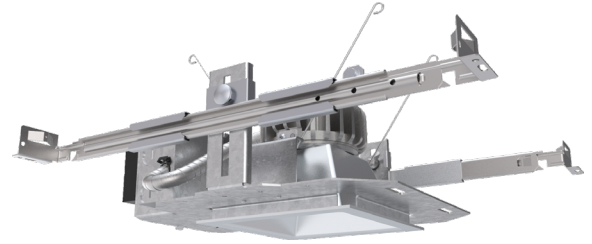
All values are design or typical values, measured under laboratory conditions at 25 °C.

Specifications subject to change without notice.

Catalog Number
Notes
Type

LDN4SQ SWITCHABLE

**4" OPEN
Non-IC
New Construction Downlight**



LDN4SQ AR LS	Wattage	80CRI							
		30K/80CRI		35K/80CRI		40K/80CRI		50K/80CRI	
		Delivered Lumens	LPW	Delivered Lumens	LPW	Delivered Lumens	LPW	Delivered Lumens	LPW
AL01 (500LM)	6	492	85	503	87	515	88	531	90
AL01 (750LM)	9	778	88	796	89	815	91	840	93
AL01 (1000LM)	13	1093	85	1118	86	1145	88	1180	90
AL02 (1000LM)	13	1158	93	1185	95	1213	97	1251	99
AL02 (1500LM)	19	1691	90	1730	92	1771	93	1826	96
AL02 (2000LM)	25	2130	86	2179	87	2231	89	2300	91
AL03 (2000LM)	25	2191	89	2242	90	2295	92	2366	94
AL03 (2500LM)	32	2645	84	2707	86	2771	87	2857	89
AL03 (3000LM)	38	3004	80	3074	81	3147	83	3244	85
AL04 (4000LM)	39	3486	90	3557	92	3628	94	3664	95
AL04 (4500LM)	44	3847	88	3926	89	4004	91	4044	92
AL04 (5000LM)	49	4184	85	4269	87	4355	88	4397	89

A+ Capable Luminaire

This item is an A+ capable luminaire, which has been designed and tested to provide consistent color appearance and out-of-the-box control compatibility with simple commissioning.

- All configurations of this luminaire meet the Acuity Brands' specification for chromatic consistency
- This luminaire is part of an A+ Certified solution for nLight® control networks when ordered with drivers marked by a shaded background*
- This luminaire is part of an A+ Certified solution for nLight control networks, providing advanced control functionality at the luminaire level, when selection includes driver and control options marked by a shaded background*

To learn more about A+, visit www.acuitybrands.com/aplus.

*See ordering tree for details

LDN4SQ							
Series	Lumens ‡	Color temperature ‡	Aperture/Trim Color	Reflector Flange	Finish	Distribution	Voltage
LDN4SQ 4" Square	AL01 500/750/1000lm	SWW1 3000K-3500K-4000K-5000K	LS4 Downlight	AR Clear	(blank) Self-flange	LSS Semi-specular	MVOLT 120V - 277V 347 347V step-down transformer supplied
	AL02 1000/1500/2000lm		LSW4 Wallwash	WR ‡ White painted	TRW ‡ White	(blank) (1.0s/mh)	
	AL03 2000/2500/3000lm	Fixed CCT		BR ‡ Black painted	TRBL ‡ Black	WD Wide (1.2s/mh)	
	AL04 4000/4500/5000lm	30K 3000K					
	Fixed Lumen Output	35K 3500K					
	05LM 500lm	40K 4000K					
	07LM 750lm	50K 5000K					
	10LM 1000lm						
	15LM 1500lm						
	20LM 2000lm						
	25LM 2500lm						
	30LM 3000lm						
	40LM 4000lm						
	45LM 4500lm						
	50LM 5000lm						

Driver	Options	nLight Options
UGZ Universal dimming to 10% 0-10V; line voltage dimming (120V)	90CRI High CRI (90+)	NPS80EZ ‡ nLight® network power/relay pack with 0-10V dimming
UGZ1 Universal dimming to 1% 0-10V; line voltage dimming (120V)	AT ‡ Airtight (IP55)	NPS80EZER ‡ nLight® network power/relay pack with 0-10V dimming; ER controls fixtures on emergency circuit.
DALI ‡ DALI dimming to 1%	CP ‡ Chicago Plenum	NLTAIR2 ‡ nLight® Air enabled
D10 Minimum dimming 10% driver for use with JOT D1 Minimum dimming 1% driver for use with JOT	EL ‡ Batterypack (10W constant power) Non-T20 Compliant, integral test switch	NLTAIRER2 ‡ nLight® AIR Dimming Pack Wireless Controls. Controls fixtures on emergency circuit
D1 Minimum dimming 1% driver for use with JOT	ELR ‡ Batterypack (10W constant power) Non-T20 Compliant remote test switch	NLTAIREM2 ‡ nLight® AIR Dimming Pack Wireless Controls. UL924 Emergency Operation, via power interrupt detection.
	E10WCP ‡ Batterypack (10W constant power) T20 Compliant, integral test switch	
	E10WCPR ‡ Batterypack (10W constant power) T20 Compliant, remote test switch	
	ETS ‡ Iota Emergency Transfer System	
	JOT ‡ Wireless room control with “Just One Touch” pairing	

‡ Option Restrictions	
Options	Restriction
	Lumens and Color Temp restriction note: Fixed Lumens and CCT must be specified together (for example: 10LM 30K).
AT	Standard for CP and IP55, not available with WW
E10WCPR	Not available EC1, EC6, QDS, CP, 347V, NPS80EZ ER, NLTAIRER2, NLTAIREM2, or ALO3 (2000-3000L) DALI.
E10WCP	Not available with EC1, EC6, AT, QDS, CP, 347V, NPS80EZ ER, NLTAIRER2, NLTAIREM2, ALO3 (2000-3000L) DALI, OR WL.
ELR	Not available EC1, EC6, QDS, CP, 347V, NPS80EZ ER, NLTAIRER2, NLTAIREM2, or ALO3 (2000-3000L) DALI.
EC6	Not Available with CP,QDS, ELR, E10WCP, or E10WCPR.
WL	Not available with WW, All CP is wet location, except WW (Damp). IP55 rated.
QDS	Not Available with CP, ELR, E10WCP, or E10WCPR.
EC1	Not Available with CP,QDS, ELR, E10WCP, or E10WCPR.
JOT	Not available with CP, NPS80EZ, NPS80EZ ER, NLTAIR2, NLTAIRER2, NLTAIREM2, UGZ, or DALI drivers. Max 4500 lumens. Fixed lumens and CCT only.
NPS80EZ	Not available with CP, QDS, DALI, D1, OR D10 drivers. 120V OR 277V only. Not available with 347V.
NPS80EZER	Not available with CP, QDS, ELR, E10WCP, E10WCPR, DALI, D1, OR D10 drivers. 120V OR 277V only. Not available with 347V.
NLTAIR2	Not available with CP, QDS, DALI, D1, OR D10 drivers. Non-emergency luminaires with this option can be used as a normal power sensing device for nLight AIR devices and luminaires with EM emergency options.
NLTAIRER2	Not available with CP, QDS, ELR, E10WCP, E10WCPR, DALI, D1, OR D10 drivers. Not available with 347V.
NLTAIREM2	Not available with CP, QDS, ELR, E10WCP, E10WCPR, DALI, D1, OR D10 drivers. See UL 924 Sequence of Operation table.
CP	Not available with, QDS, EC1, EC6, ELR, E10WCP, E10WCPR, 347V, JOT, NPS80EZ, NPS80EZ ER, NLTAIR2, NLTAIRER2, NLTAIREM2, D1, OR D10 drivers. Not available with square trim.
ETS	Not available with, QDS, ELR, E10WCP, E10WCPR, 347V, JOT, NPS80EZ, NPS80EZ ER, NLTAIR2, NLTAIRER2, NLTAIREM2, DALI, D1, OR D10 driver
DALI	Not available with fixed lumens or CCT. Max 4500 lumens.
WW	Not available with WL, EL, E10WCP.
TRW, TRBL	Available with clear (AR) reflector only.
WR, BR	Not available with a reflector finish
347V	Not available with CP, QDS, EL, ELR, E10WCP, E10WCPR, NLTAIRER2, ETS, NPS80EZ, NPS80EZER, ALO1 ROUND TRIM, 05 LUMENS ROUND TRIM, AND 07 ROUND TRIM.

Accessories: Order as a separate catalog number.	
LS4AR ** TRIM	4" clear, specular reflector (** specify finish LS, LSS, or LS)
LS4WR TRIM	4" white reflector
LS4BR TRIM	4" black reflector
LSW4AR ** TRIM	4" wallwash clear, specular reflector (** specify finish LS, LSS, or LS)
LSW4WR TRIM	4" wallwash white reflector
LSW4BR TRIM	4" wallwash black reflector

UL924 Sequence of Operation
The below information applies to all nLight AIR devices with an EM option. <ul style="list-style-type: none">• EM devices will remain at their high-end trim and ignore wireless lighting control commands, unless a normal-power-sensed (NPS) broadcast is received at least every 8 seconds.• Using the CLAIRITY+ mobile app, EM devices must be associated with a group that includes a normal power sensing device to receive NPS broadcasts.• Only non-emergency rPP20, rLSXR, rSBOR, rSDGR, and nLight AIR luminaires with version 3.4 or later firmware can provide normal power sensing for EM devices. See specification sheets for control devices and luminaires for more information on options that support normal power sensing.

EMERGENCY BATTERY PACK OPTIONS - FIELD INSTALLABLE

Battery Model Number	Wattage	Runtime (Minutes)	Lumen Output* @ 120 Lumens/Watt	Other
ILB CP07 2H A	7W	120	840	Storm Shelter / 2 Hour Runtime
ILB CP10 A	10W	90	1200	
ILBLP CP10 HE SD A+	10W	90	1200	Title 20, Self Diagnostic
ILBLP CP15 HE SD A+	15W	90	1800	Title 20, Self Diagnostic
ILB CP20 HE A	20W	90	2400	Title 20
ILB CP20 HE SD A	20W	90	2400	Title 20, Self Diagnostic
ILBHI CP10 HE SD A+	10W	90	1200	347-480V AC Input, Title 20, Self Diagnostic
ILBHI CP15 HE SD A+	15W	90	1800	347-480V AC Input, Title 20, Self Diagnostic

All the above are UL Listed products that are certified for field install external/remote to the fixture.

* Minimum delivered lumen output to assist in product selection for increased fixture mounting height.

* The CP10 delivered emergency illumination outperforms legacy 1400 lumen fluorescent emergency ballast.

Please contact us at productsupportemergency@acuitybrands.com for any Emergency Battery related questions.

LUMEN OUTPUT MULTIPLIERS - FINISH	
Specular (LS)	1.05
Semi-specular (LSS)	1.00
Matte diffuse (LD)	0.85

LUMEN OUTPUT MULTIPLIERS - CCT			
3000K	3500K	4000K	5000K
0.98	1.0	1.01	1.03

LUMEN OUTPUT MULTIPLIERS - CRI	
80	1.0
90	0.874

HOW TO ESTIMATE DELIVERED LUMENS IN EMERGENCY MODE

Use the formula below to estimate the delivered lumens in emergency mode

Delivered Lumens = 1.25 x P x LPW

P = Ouput power of emergency driver. P = 10W for PS1055CP

LPW = Lumen per watt rating of the luminaire. This information is available on the ABL luminaire spec sheet.

The LPW rating is also available at [Designlight Consortium](#).

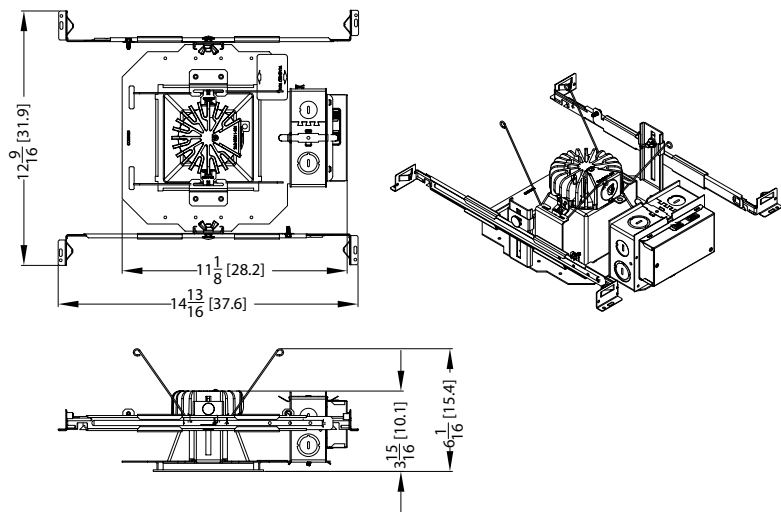
PHOTOMETRY

LDN4SQ AR LS		90CRI							
Lumen Output	Wattage	30K/90CRI		35K/90CRI		40K/90CRI		50K/90CRI	
		Delivered Lumens	LPW	Delivered Lumens	LPW	Delivered Lumens	LPW	Delivered Lumens	LPW
AL01 (500LM)	6	430	75	441	76	453	78	465	79
AL01 (750LM)	9	680	77	699	78	717	80	735	81
AL01 (1000LM)	13	955	74	981	76	1007	77	1033	78
AL02 (1000LM)	13	1012	82	1040	83	1067	85	1095	86
AL02 (1500LM)	19	1478	79	1518	80	1558	82	1598	84
AL02 (2000LM)	25	1861	75	1912	76	1962	78	2013	79
AL03 (2000LM)	25	1915	77	1967	79	2019	81	2071	82
AL03 (2500LM)	32	2312	74	2375	75	2437	77	2500	78
AL03 (3000LM)	38	2626	70	2697	71	2768	73	2839	74
AL04 (4000LM)	39	2893	75	2952	76	3011	78	3041	79
AL04 (4500LM)	44	3193	73	3258	74	3324	76	3356	76
AL04 (5000LM)	49	3473	70	3543	72	3614	73	3650	74
LDN4SQWW AR LS		80CRI							
Lumen Output	Wattage	30K/80CRI		35K/80CRI		40K/80CRI		50K/80CRI	
		Delivered Lumens	LPW	Delivered Lumens	LPW	Delivered Lumens	LPW	Delivered Lumens	LPW
AL01 (500LM)	6	480	83	491	85	503	86	518	88
AL01 (750LM)	9	760	85	777	87	796	88	821	91
AL01 (1000LM)	13	1067	83	1091	84	1117	86	1152	88
AL02 (1000LM)	13	1131	91	1157	93	1185	94	1221	96
AL02 (1500LM)	19	1651	88	1689	90	1729	91	1783	93
AL02 (2000LM)	25	2079	84	2127	85	2178	87	2246	89
AL03 (2000LM)	25	2139	87	2189	88	2241	90	2310	92
AL03 (2500LM)	32	2582	82	2642	84	2705	85	2789	87
AL03 (3000LM)	38	2933	78	3001	79	3072	81	3168	83
LDN4SQWW AR LS		90CRI							
Lumen Output	Wattage	30K/90CRI		35K/90CRI		40K/90CRI		50K/90CRI	
		Delivered Lumens	LPW	Delivered Lumens	LPW	Delivered Lumens	LPW	Delivered Lumens	LPW
AL01 (500LM)	6	420	73	431	74	442	76	454	77
AL01 (750LM)	9	664	75	682	76	700	78	718	79
AL01 (1000LM)	13	932	72	958	74	983	75	1008	77
AL02 (1000LM)	13	988	80	1015	81	1042	83	1069	84
AL02 (1500LM)	19	1443	77	1482	79	1521	80	1560	82
AL02 (2000LM)	25	1817	73	1866	75	1916	76	1965	78
AL03 (2000LM)	25	1870	76	1920	77	1971	79	2022	80
AL03 (2500LM)	32	2257	72	2318	73	2379	75	2441	76
AL03 (3000LM)	38	2563	68	2633	70	2702	71	2772	72

LDN4SQ SWW

* All dimensions are inches (centimeters) unless otherwise noted.

LDN4SQ SWW1 500-3000LM



LDN4SQ SWW1 IC RATING	
AL01	NON-IC
AL02	NON-IC
AL03	MARKED SPACING 18 X 18 X8

Notes

- Tested in accordance with IESNA LM-79-08.
- Tested to current IES and NEMA standards under stabilized laboratory conditions.
- CRI: 80 typical.



LDN4SQ SWW

DIMMER COMPATIBILITY

Not compatible with DALI or DMX dimmers. For specific compatible dimmers see below.

COMPATIBLE LINE VOLTAGE DIMMERS:						
Type	Forward Phase	ALO1 (500-1000lm)	ALO2 (1000-2000lm)	ALO3 (2000-3000lm)	ALO4 (3000-5000lm)	Comment
MLV	Sensorswitch WPD	YES	YES	YES	YES	
MLV	Sensorswitch CMR PDT10 ADC VLP	YES	YES	YES	YES	
MLV	Synergy ISD 600LV	YES, 2x *	YES	YES	YES	* min 2 fixtures
INC	Synergy ISD 600I	YES, 2x *	YES	YES	YES	* min 2 fixtures
MLV	Lutron Glyder GLV-600	YES	YES	YES	YES	
INC	Leviton SureSlide 6633	YES	YES	YES	YES	
MLV	Lutron Diva DVLV-600P	YES	YES	YES	YES	
MLV	Lutron Skylark SLV-600P	YES	YES	YES	YES	
INC	Lutron RadioRA 2 10ND	YES	YES	YES	YES	
MLV	Leviton SureSlide 6613-PLW	YES	YES	YES	YES	
INC	Lutron Diva DVCL-153P	YES	YES	YES	YES	
MLV	Leviton IPM06	YES, 2x *	YES	YES	YES	* min 2 fixtures
Type	Reverse Phase Dimmer Bank	ALO1 (500-1000lm)	ALO2 (1000-2000lm)	ALO3 (2000-3000lm)	ALO4 (3000-5000lm)	
ELV	Lutron Nova T NTELV-600	YES	YES	YES	YES	
ELV	Lutron Diva DVELV 600P	YES	YES	YES	YES	
ELV	Lutron Maestro MAELV 600	YES	YES	YES	YES	
ELV	Leviton Vizia VPE06-1LX	YES	YES	YES	YES	
ELV	Leviton Illumatech IPE04	YES	YES	YES	YES	
ELV	Control4 C4-APD 120 REVERSE PHASE	YES	YES	YES	YES	
Type	Miscellaneous Dimmers	ALO1 (500-1000lm)	ALO2 (1000-2000lm)	ALO3 (2000-3000lm)	ALO4 (3000-5000lm)	
PHA	Lutron RadioRA2 RRD-6NA	YES	YES	YES	YES	
PHA	Lutron Maestro PRO LED+ RRD-PRO	YES	YES	YES	YES	
Type	Control Systems	ALO1 (500-1000lm)	ALO2 (1000-2000lm)	ALO3 (2000-3000lm)	ALO4 (3000-5000lm)	
MLV	Lutron LP-RPM-4U	YES	YES	YES	YES	
PHA	Lutron LP-RPM-4A	YES	YES	YES	YES	
MLV	Lutron GRAPHIC EYE QSGRJ-3P	YES	YES	YES	YES	
PHA	Lutron PA Power Module PHPM-PA-120	YES	YES	YES	YES	
ELV	Lutron nLight nSPSPCD ELV	YES	YES	YES	YES	

COMPATIBLE 0-10V DIMMERS:							
Manufacturer	System Type	Description	P/N	ALO1 (500-1000lm)	ALO2 (1000-2000lm)	ALO3 (2000-3000lm)	ALO4 (3000-5000lm)
ACUITY	Wall Box	sensorswitch, dimming switch with multi-way option	SPODMRA	YES	YES	YES	YES
ACUITY	Wall Box	sensorswitch, wall switch sensor, occupancy controlled dimming	WSX D WH	YES	YES	YES	YES
ACUITY	Control System	nLight	nPP16D	YES	YES	YES	YES
ACUITY	Control System	nLight	nPS 80 EZ	YES	YES	YES	YES
ACUITY	Control System	nLight Air	rPP20 D	YES	YES	YES	YES
Lutron	Other	0-10V (sink or source) PowPak wireless dimming module	RMJ-5T-DV-B	YES	YES	YES	YES
Wattstopper	Control System	Digital single relay room controller (0-10V)	LMRC-211	YES	YES	YES	YES
Crestron	Control System	DIN Rail 0-10V fluorescent dimmer, 4 feeds, 4 channels (Green Light System)	DIN-4DIMFLV4	YES	YES	YES	YES
Lutron	Other	Grafik Eye 0-10V adapter	GRX-TV1	YES	YES	YES	YES
Leviton	Wall Box	Illumatech 0-10V	IP710-DLX	YES	YES	YES	YES
Lutron	Control System	Mounted in the Homeworks QS panel - 0-10V dimmer (sink or source)	GRX-TVM2	YES	YES	YES	YES
Lutron	Wall Box	Nova 0-10V wallbox dimmer (use with PP-120-H line voltage relay)	NTFTV	YES	YES	YES	YES
Lutron	Wall Box	Nova 0-10V wallbox dimmer (use with PP-120-H line voltage relay)	NTSTV-DV	YES	YES	YES	YES
Lutron	Wall Box	Nova T	NFTV	YES	YES	YES	YES
Leviton	Wall Box	Renior II 0-10V	AWSMG-7DW	YES	YES	YES	YES