

APPLICATION FOR
URBAN DESIGN COMMISSION
REVIEW AND APPROVAL

AGENDA ITEM # _____
Project # _____
Legistar # _____

DATE SUBMITTED: <u>12.14.11</u>	Action Requested
UDC MEETING DATE: <u>12.21.11</u>	<input type="checkbox"/> Informational Presentation
	<input checked="" type="checkbox"/> Initial Approval and/or Recommendation
	<input type="checkbox"/> Final Approval and/or Recommendation

PLEASE PRINT!

PLEASE PRINT!

PROJECT ADDRESS: 733 SOUTH GAMMON ROAD

ALDERMANIC DISTRICT: SUBECK #1

OWNER/DEVELOPER (Partners and/or Principals) ARCHITECT/DESIGNER/OR AGENT:
JOHN WALSH - TJS VENTURES JOHN BIENO - TJK DESIGN BUILD
5201 EAST TERRACE DRIVE 624 WEST MAIN STREET
MADISON, WI 53718 MADISON, WI 53703

CONTACT PERSON: JOHN BIENO - TJK DESIGN BUILD
Address: 624 WEST MAIN STREET
MADISON, WI 53703
Phone: 608 257 1090
Fax: 608 257 1092
E-mail address: JBIENO@TJKDESIGNBUILD.COM

- TYPE OF PROJECT:
(See Section A for:)
- Planned Unit Development (PUD)
 - General Development Plan (GDP)
 - Specific Implementation Plan (SIP)
 - Planned Community Development (PCD)
 - General Development Plan (GDP)
 - Specific Implementation Plan (SIP)
 - Planned Residential Development (PRD)
 - New Construction or Exterior Remodeling in an Urban Design District * (A public hearing is required as well as a fee)
 - School, Public Building or Space (Fee may be required)
 - New Construction or Addition to or Remodeling of a Retail, Hotel or Motel Building Exceeding 40,000 Sq. Ft.
 - Planned Commercial Site
- (See Section B for:)
- New Construction or Exterior Remodeling in C4 District (Fee required)
- (See Section C for:)
- R.P.S.M. Parking Variance (Fee required)
- (See Section D for:)
- Comprehensive Design Review* (Fee required)
 - Street Graphics Variance* (Fee required)
 - Other _____

*Public Hearing Required (Submission Deadline 3 Weeks in Advance of Meeting Date)
Where fees are required (as noted above) they apply with the first submittal for either initial or final approval of a project.

November 8, 2011

Mr. Alan J. Martin
Planner III/Secretary, Urban Design Commission
Department of Planning & Development
Madison Municipal Building
215 Martin Luther King Jr. Blvd
PO Box 2985
Madison WI 53701

RE: Letter of Intent
Conditional Use/Demo Permit
733 South Gammon Road
Madison WI

Dear Mr. Martin:

The following is submitted together with the plans, application and zoning text for staff, Plan Commission and Common Council consideration of approval.

Organizational structure:

Owner: TJS Ventures
5201 East Terrace Drive
Madison, WI 53718
608-244-7012
Contact: John Walsh

Architect: TJK Design Build Inc
634 West Main Street
Madison WI 53703
608-257-1090
608-257-1092 fax
Contact: John J Bieno
jjbien@tjkdesignbuild.com

Engineer: Professional Engineering
818 North Meadowbrook Lane
Waunakee, WI 53597
608-849-9378
Contact: Roxanne Johnson

Landscape Design: Richard Slayton
821 West Lakeside Street
Madison, WI 53715
608-251-6132

Introduction:

The proposed site is located on the East end of the 700 block of South Gammon Road. The site is approximately 36,920 sq ft in size and contains an unused bank branch with drive thru.

Deconstruction:

This proposed development envisions the deconstruction of the slab-on-grade structure and drive thru canopy. This would also include the associated sidewalk and paved areas. Inspections of the property has been made by the development team. They have concluded that the structures are beyond the capacity of any reasonable rehabilitation. Additional reports on the structures existing condition will be prepared for distribution to the staff and Plan Commission. The developer will contract to prepare a recycling and reuse plan for the buildings and the components and materials will be handled appropriately. Although the zoning code clearly encourages the preservation of existing structures the zoning codes purpose also includes promoting the general welfare of the city, encouraging the most appropriate land uses and conserving and enhancing the taxable value of lands and buildings. We believe that the Plan Commission can determine that the demolition standards are met.

Project Description:

The property is located on the far West side of Madison. It is adjacent to a large grocery store as well as there accompanying gas station. It is also adjacent to Gammon Road. Access to the site is gained from a shared drive between the gas station and this property as well as into the parking lot to the grocery store. The site is currently occupied by a bank branch facility with attached, covered drive-thru. As part of this redevelopment all of the existing structures and site work would be demolished. There is also an approximately 20 year old multi-tenant retail building located to the South. The drainage for the development to the South flows through the very South East corner of our property into the parking lot for the grocery store.

In an attempt to maximize visual interest and exposure for perspective tenants, the building has been stepped to open up view points to and from Gammon Road to the building. The parking was then also curved to follow the steps of the building. This allowed for more green space adjacent to the access drive as well as creating landscape opportunities adjacent to the building. This new development has a drive through that is located on the West and South side of the building. The drive comes off the end of the curved parking lot and follows along the back side of the building. The pick up window is located off of the back of the building and away from Gammon Road. The drive has been positioned so that there is ample area between the property line for green space. The site naturally slopes to the East and infiltration opportunities have been provided for in various locations along that edge of the property. As mentioned earlier, there are several landscape beds located between the parking lot and the building. There are also landscaped areas in and around both the parking lot and the building. The parking lot will be fully lit by pole mounted light fixtures. Walkways will be lit by building mounted light fixtures. Fixtures on the building will offer visual interest as well as a sense of scale.

The building has a continuous masonry base that rises at the tower elements. The base is capped by a continuous precast band which also acts as the sills for window which puncture the structure at various locations to offer daylight into the building. The windows are capped with a fabric awning on an aluminum frame. The awnings have an accent color. The main wall of the building is brick which is accented with the soldier course at the tops of the windows and masonry corneous to cap off the wall. The tower elements which also act as the entries into the various tenant spaces had a covered canopy and a sloped roof. The sign band is also in an accent exterior insulation and finish system. All glazing is insulated Low E. Various signage

opportunities are called out on the elevations. All four sides of the building are treated with material equal high level of material finishes.

Project Schedule:

It is anticipated that construction will start in the late winter of 2011 and will be completed in the summer of 2012.

Social and Economic Impact:

This development will have a positive social and economic impact. The development will substantially increase the city's tax base on an infill site with minimal if any increased cost to the city.

Thank you for your time in reviewing our proposal.

Sincerely,

John J Bieno, AIA
TJK Design Build Inc

DESCRIPTION

ICON'S gentle curves and sleek profile create a shape that is beyond common. Two (2) unique arm choices combined with structural element options and multiple housing sizes provide no limitations in bridging to the architectural application.

Catalog #	Type
Project	
Comments	Date
Prepared by	

SPECIFICATION FEATURES

Construction

HOUSING: Heavy wall, die-cast aluminum housing maintains a nominal .125 wall thickness for precise tolerance control and repeatability in manufacturing. **DOOR:** Heavy wall, die-cast aluminum door maintains a nominal .125 wall thickness. Continuous silicone gasketing provides an IP65 fixture rating. Toolless entry to housing is provided via two (2) recess mounted button style latches. Captive hinging is fully concealed. **UPSWEEP ARM:** Manufactured of heavy wall cast aluminum. Internal belts guides provided for positioning arm to housing and pole. **LINEAR ARM:** Manufactured of heavy wall extruded aluminum. Arm features internal bolt guides for positioning arm to housing and pole. **STRUCTURAL MOUNT:** Die-cast aluminum cleat factory mounted and finished in luminaire color. Stainless steel structural rod measures 1/2" in diameter and is provided in luminaire finish or optional natural finish. Product functions in conjunction with linear arm. INVUE poles provided pre-

drilled for suspension mount applications. See INVUE pole brochure for complete selection of matching poles. **STRUCTURAL WALL MOUNT:** Die-cast aluminum cleat factory mounted to luminaire and finished in luminaire color. Stainless steel structural rod measures 1/2" in diameter and is provided in luminaire finish or optional natural finish. Wall bracket works in conjunction with linear arm.

Electrical

ELECTRICAL TRAY: Ballast and related electrical components are mounted to a reinforced one piece toolless release power tray. Electrical quick disconnects allow tray to be completely removed from housing providing ample hand and tool room for attachment of luminaire during installation.

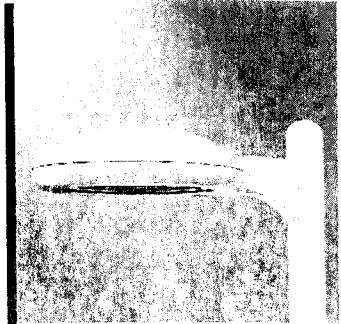
Optical

LENS: Impact-resistant 1/8" thick tempered clear or optional frosted flat glass for concealment of lamp image. **OPTICAL SYSTEM:** Choice of five (5) high efficiency segmented optical systems

constructed of premium 95% reflective anodized aluminum sheet. Optical segments are rigidly mounted inside a thick gauge aluminum housing for superior protection. All segment faces are clean of rivet heads, tabs, or other means of attachment which may cause streaking in the light distribution. All reflector modules feature toolless removal, quick disconnect wiring plugs, and are toolless field rotatable in 90° increments. Medium housing (ICM) optics feature mogul-base lampholders for HID lamp sources.

Finish

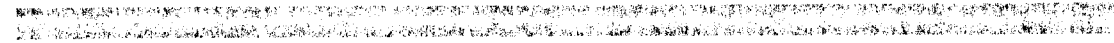
Housing and arm finished in a 5 stage premium TGIC polyester powder coat paint, 2.5 mil nominal thickness for superior protection against fade and wear. Standard colors include black, bronze, grey, white, dark platinum, and graphite metallic. RAL and custom color matches available. Consult your INVUE Lighting Systems Representative for more information.



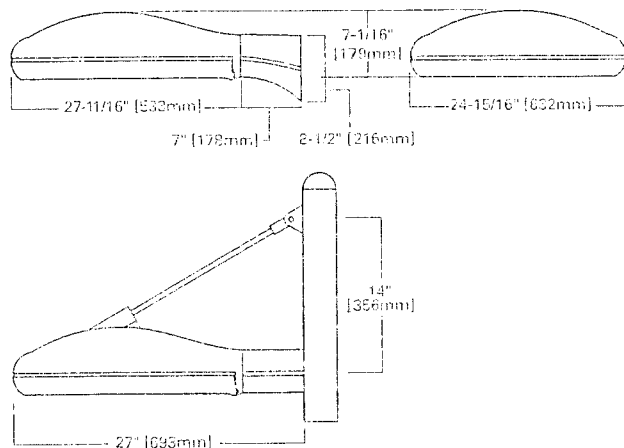
**ICM
ICON SITE
MEDIUM**

- 84 - 400W**
- Pulse Start Metal Halide
- Metal Halide
- High Pressure Sodium
- Compact Fluorescent

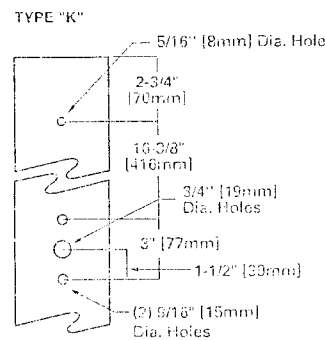
ARCHITECTURAL
AREA LUMINAIRE



DIMENSIONS



STRUCTURAL MOUNT

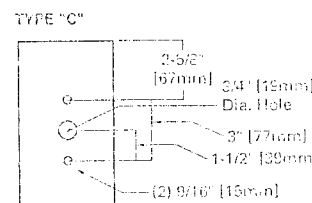


WATTAGE TABLE

Lamp Type	Voltage
Pulse Start Metal Halide (MP) (2)	150, 175, 250, 320, 350, 400W
High Pressure Sodium (HPS)	150, 250, 400W
Metal Halide (MH)	175, 250, 400W
Compact Fluorescent (CF)	(1) 42, (2) 57W

NOTE: IESNA Compliant: 175-400W.

ARM DRILLING



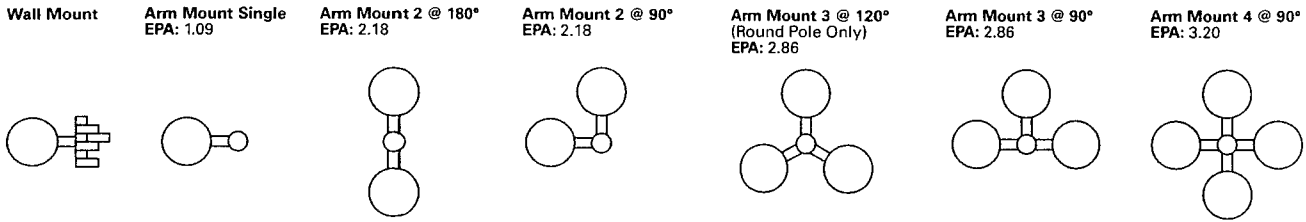
CERTIFICATION DATA
 IP65 Rated
 U.L. 1598 Listed
 3G Vibration Tested
 CSA Listed
 25°C Ambient Temperature Rating
 ISO 9001
 Full Cutoff

EPA
 Effective Projected Area:
 (Sq. Ft.)
 Single: 1.09
 Single Structural: 1.11

SHIPPING DATA
 (Approximate)
 Net Weight (lbs.): 8.8
 Volume (cu. ft.): 4.09



MOUNTING VARIATIONS



ORDERING INFORMATION

Sample Number: ICM-400-MH-MT-3S-BK-PRCPS-L



Product Family ¹
ICM: ICON Site Medium

Lamp Wattage ²
MP
 150=150W
 175=175W
 250=250W
 320=320W
 350=350W
 400=400W³
MH ⁴
 175=175W
 250=250W
 400=400W³
HPS
 150=150W
 250=250W
 400=400W
Compact Fluorescent
 84=(2) 42W⁵
 114=(2) 57W⁵

Lamp Type
MP: Pulse Start Metal Halide
MH: Metal Halide
HPS: High Pressure Sodium
CF: Compact Fluorescent⁶

Voltage ⁷
 120=120V
 208=208V
 240=240V
 277=277V
 347=347V
 480=480V
DT: Dual-Tap wired 277V⁸
MT: Multi-Tap wired 277V⁹
TT: Triple-Tap wired 347V¹⁰
UNV: 120-277V Universal Electronic Ballast

Optical System
2S: Type II
3S: Type III
4S: Type IV
5S: Type V
SL: Forward Throw w/ Spill Light Eliminator

Color ¹¹
BK: Black
AP: Grey
BZ: Bronze
W: White
DP: Dark Platinum
GM: Graphite Metallic

Structural Options ¹²
Pole Mount
PRCPS: Strut Rod and Clevis Set for Square Pole¹³ (Painted to match fixture, does not include arm)
PRCSS: Stainless Steel Strut Rod and Clevis Set¹³ for Square Poles (Clevis' painted to match fixture, does not include arm)
PRCPR: Strut Rod and Clevis Set for Round Pole¹⁴ (Painted to match fixture, does not include arm)
PRCSR: Stainless Steel Strut Rod and Clevis Set¹⁴ for Round Poles (Clevis' painted to match fixture, does not include arm)
Wall Mount
WRCP: Strut Rod and Clevis Set (Painted to¹⁵ match fixture, does not include arm)
WRCS: Stainless Steel Strut Rod and Clevis Set¹⁵ (Clevis' painted to match fixture, does not include arm)

Accessories ²⁰
VA1003-XX: Wall Mount Kit w/ Upsweep Arm²¹
VA1004-XX: Wall Mount Kit w/ Linear Arm²¹
VA1011-XX: Upsweep Arm for Square Pole
VA1012-XX: Upsweep Arm for Round Pole
VA1014-XX: Linear Arm for Square Pole
VA1015-XX: Linear Arm for Round Pole
VA1018-XX: Mast Arm Adapter Kit
VA1074-XX: ICM Structural Mount Wall Mount Arm²²
VA1033-XX: Single-arm Tenon Adapter for 2 3/8" O.D. Tenon
VA1034-XX: 2@180 Degree Tenon Adapter for 2 3/8" O.D. Tenon
VA1035-XX: 3@120 Degree Tenon Adapter for 2 3/8" O.D. Tenon
VA1036-XX: 1@90 Degree Tenon Adapter for 2 3/8" O.D. Tenon
VA1037-XX: 2@90 Degree Tenon Adapter for 2 3/8" O.D. Tenon
VA1038-XX: 3@90 Degree Tenon Adapter for 2 3/8" O.D. Tenon
VA1039-XX: 2@120 Degree Tenon Adapter for 2 3/8" O.D. Tenon
VA1040-XX: Single-arm Tenon Adapter for 3 1/2" O.D. Tenon
VA1041-XX: 2@180 Degree Tenon Adapter for 3 1/2" O.D. Tenon
VA1042-XX: 3@120 Degree Tenon Adapter for 3 1/2" O.D. Tenon
VA1043-XX: 4@90 Degree Tenon Adapter for 3 1/2" O.D. Tenon
VA1044-XX: 2@90 Degree Tenon Adapter for 3 1/2" O.D. Tenon
VA1045-XX: 3@90 Degree Tenon Adapter for 3 1/2" O.D. Tenon
VA1046-XX: 2@120 Degree Tenon Adapter for 3 1/2" O.D. Tenon
OA/RA1010: NEMA Photocell - Multi-Tap
OA/RA1027: NEMA Photocell - 480V
OA/RA1201: NEMA Photocell - 347V

- Notes:**
1. Arm not included. See accessories.
 2. Standard with mogul base socket for HPS, MH and 175-400W MP. Standard with medium-base socket for MP lamps 150W and below.
 3. 400W MP and MH requires reduced envelope ED26 lamp.
 4. MH products available for non-U.S. markets only.
 5. Dual Compact Fluorescent lamp options available in Type 2S with 84 and 114W. Type 3S available in 84W only.
 6. CF ballasts are 120 through 277V. Specify with UNV voltage designation.
 7. Products also available in non-US voltages and 50Hz for international markets. Consult factory for availability and ordering information.
 8. Dual-tap is 120/277V wired 277V.
 9. Multi-tap is 120/208/240/277V wired 277V.
 10. Triple-tap is 120/277/347V wired 347V.
 11. Custom and RAL color matching available upon request. Consult your INVUE Lighting Systems Representative for further information.
 12. Add as suffix in the order shown.
 13. Square pole mount structural options do not include arm assembly (See Accessories). Compatible with VA1014 linear arm only.
 14. Round pole mount structural options do not include arm assembly (See Accessories). Compatible with VA1015 linear arm only.
 15. Wall mount structural options do not include arm assembly (See Accessories). Compatible with VA1074 linear arm only.
 16. Quartz options not available with SL optic.
 17. NEMA photocell receptacle not available in conjunction with structural options.
 18. Dual switching requires dual 42W or dual 57W Compact Fluorescent lamps. Allows independent switching control of each lamp through use of two (2) electronic ballasts. Allows 50% power reduction when dual ballasts are independently wired and controlled.
 19. House side shield not available on 5S and SL optics.
 20. Order separately, replace XX with color suffix.
 21. For use in down lighting applications only.
 22. Includes arm only. Must specify WRCP or WRCS in fixture ordering logic. Down light only.



DESCRIPTION

EPIC Collection delivers custom luminaire flexibility with the quality and availability expectations of standard specification grade product. Offered in two (2) housing sizes, and hundreds of unique combinations, EPIC Collection can be dressed to suit any application. Recognizing evolving environmental and legislative trends, EPIC Collection delivers world class optical solutions to the decorative luminaire marketplace. EPIC Collection offers targeted solutions for full cutoff compliance, spill light control, and path of egress illumination while integrating the latest lamp technologies into visually comfortable lighting solutions.

SPECIFICATION FEATURES

Construction

TOP: Cast aluminum modern top housing maintains a nominal 1/8" sidewall thickness. Top attaches to cast aluminum mounting arm hub with four (4) stainless steel fasteners. One (1) piece silicone gasket between mounting hub and top casting seals out moisture and contaminants. **MIDSECTION:** Milky white acrylic lens utilizes continuous silicone gaskets to seal lens to top casting and shade. The following mid section options feature cast aluminum construction and stainless steel assembly hardware: SO Solid, WN Window, LV Louvered, ST Slot, SR Solid Rings, LR Luminous Rings feature clear acrylic rings suspended by stainless steel spacers and hardware. Optional colored luminous rings utilize a colored gel film attached behind luminous mid lens to project color along edges of rings. **SHADES:** Heavy gauge precision spun aluminum shades offer superior surface finish and consistency in form. **DOORFRAME ASSEMBLY:** Used with horizontally lamped segmented optical systems. Die-cast aluminum 1/8" thick door and doorframe seal to

underside of shade with a thick wall continuous silicone gasket. Door hinges open via release of two (2) concealed quick release fasteners. Impact resistant 1/8" thick tempered flat or sag glass lens (clear or frosted finish) seals to door with a one-piece silicone gasket.

Electrical

Ballast and related electrical componentry are mounted to a reinforced one piece tray with integral handle. Quick disconnect wiring plugs allow easy tray removal during routine maintenance.

Optical

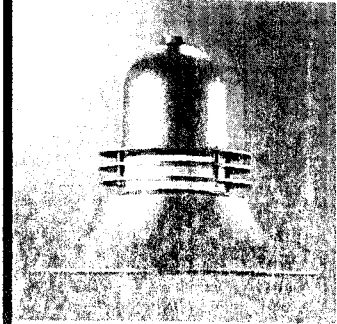
OPTICAL SYSTEMS: Choice of five (5) high efficiency segmented optical systems constructed of premium 95% reflective anodized aluminum sheet. Optical segments are rigidly mounted inside a thick gauge aluminum housing for superior protection. All segment faces are clean of rivet heads, tabs, or other means of attachment which may cause streaking in the light distribution. All reflector modules feature toolless removal,

Catalog #		Type	
Project			
Comments		Date	
Prepared by			

quick disconnect wiring plugs, and are 360 degree field rotatable. Optional MA milky white acrylic jar utilizes a vertical lamp orientation. 3R and 5R options utilize a prismatic clear tempered glass refractor along with a vertical lamp orientation. Vertically lamped optical systems are secured with a die cast retainer collar, stainless steel hardware, and a one-piece silicone gasket, and feature standard high reflectance white powder coat paint finish on underside of shade for optimal fixture efficiency.

Finish

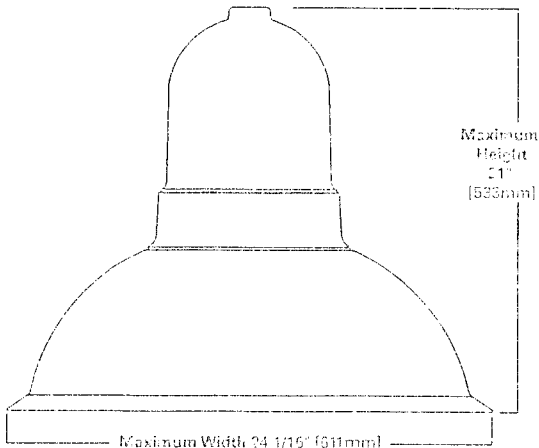
Housing finished in a 5 stage premium TGIC polyester powder coat paint, 2.5 mil nominal thickness for superior protection against fade and wear. Standard colors include black, bronze, grey, white, dark platinum, graphite metallic, and hartford green. RAL and custom color matches available. Consult your INVUE Lighting Systems Representative for more information.



**EMM
EPIC MODERN
MEDIUM**

- 42 - 175W
- Pulse Start Metal Halide
- Metal Halide
- High Pressure Sodium
- Compact Fluorescent
- DECORATIVE AREA COLLECTION

DIMENSIONS



NOTE: See configurations for more detailed information.

WATTAGE TABLE

Lamp Type	Wattage
Pulse Start Metal Halide (PSM)	50, 70, 100, 150W
High Pressure Sodium (HPS)	70, 100, 150W
Metal Halide (MH)	175W
Compact Fluorescent (CF)	42, 57W



NOTE: In all flat class and solid mid section configurations only.

CERTIFICATION DATA

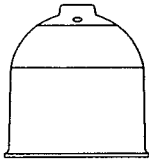
- IP66 Rated
- UL 1593 Listed
- 2G Variation Tested
- CSA Listed
- 40°C Ambient Temperature Rating
- ISO 9001
- Full Cutoff - (When specified with horizontal lamp and solid mid section or mid section)

EPA
Effective Projected Area:
(Sq. Ft.)
Flat Lens .94
Sag Lens 1.04



PRODUCT CONFIGURATOR

HOUSING



Modern
9.3" H x 8.8" W

MID SECTION



Solid
3.4" H x 9.9" W



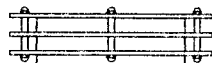
Window
3.4" H x 9.9" W



Louvered
3.4" H x 9.9" W



Slot
3.4" H x 9.9" W

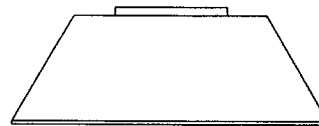


Solid Rings
3.4" H x 12" W



Luminous Rings
3.4" H x 12" W

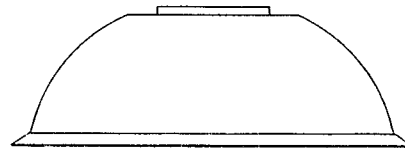
SHADE



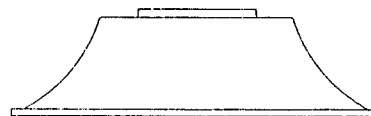
Straight Narrow
6.6" H x 19.1" W



Straight Wide
5.1" H x 23.9" W

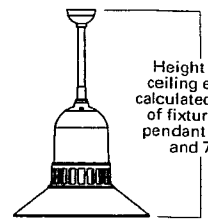


Bell
8" H x 24" W



Flute
6" H x 22.5" W

MOUNTING OPTION



Height from ceiling equals calculated height of fixture plus pendant length and 7/8"

ORDERING INFORMATION

Sample Number: EMM-175-MH-MT-3S-FG-LV-FL-BK-L

<p>Product Family ¹ EMM=Epic Modern Medium</p>	<p>Voltage ⁷ 120=120V 208=208V 240=240V 277=277V 347= 347V 480= 480V DT= Dual-Tap wired* 277V MT= Multi-Tap wired* 277V TT= Triple-Tap wired¹⁰ 347V UNV= 120-277V Universal Electronic Ballast</p>	<p>Lens Type <u>Horizontal Lamp</u> FG=Flat Glass FR=Frosted Flat Glass SG=Sag Glass FRS= Frosted Sag Glass VS= Polycarbonate¹² Vandal Shield <u>Vertical Lamp</u> X= No Lens</p>	<p>Shade Type SN=Straight Narrow SW=Straight Wide BL=Bell FL=Flute</p> <p>Color ¹³ BK= Black AP= Grey BZ= Bronze WH= White DP= Dark Platinum GM= Graphite Metallic GN= Hartford Green</p>	<p>Accessories ¹⁴ VA6101-XX=Bishop Wall Mount Arm VA6102-XX=Bishop Wall Mount Arm w/ Cross Rod VA6103-XX=Traditional Wall Mount Arm VA6104-XX=Traditional Wall Mount Arm w/ 45° Strap VA6105-XX= Bishop Single Pole Mount Arm VA6106-XX= Bishop Single Pole Mount Arm w/ Cross Rod VA6107-XX= Bishop Twin Pole Mount Arm VA6108-XX= Bishop Twin Pole Mount Arm w/ Cross Rods VA6109-XX= Traditional Single Pole Mount Arm VA6110-XX= Traditional Single Pole Mount Arm w/ Rounded Upper Bar VA6111-XX= Traditional Single Pole Mount Arm w/22 Rounded Lower Bar VA6112-XX= Traditional Single Pole Mount Arm w/ 45 Degree Upper Bar VA6113-XX= Traditional Single Pole Mount Arm w/ 45 22 Degree Lower Bar VA6114-XX= Traditional Single Pole Mount Arm w/ 45 Degree Upper Strap VA6116-XX= Traditional Twin Pole Mount Arm VA6117-XX= Traditional Twin Pole Mount Arm w/ Rounded Upper Bars VA6118-XX= Traditional Twin Pole Mount Arm w/22 Rounded Lower Bars VA6119-XX=Traditional Twin Pole Mount Arm w/ 45 Degree Upper Bars VA6120-XX=Traditional Twin Pole Mount Arm w/ 45 22 Degree Lower Bars VA6121-XX=Traditional Twin Pole Mount Arm w/ 45 Degree Upper Straps VA6122-XX=EMM Mast Arm Adapter CAARA1016=NEMA Photocontrol - Multi-Tap CAARA1027=NEMA Photocontrol - 480V CAARA1201=NEMA Photocontrol - 347V <u>Accessories Options ^{20, 21}</u> V=Victorian Finial M=Modern Finial A=Architectural Finial N=Nostalgic Finial R=NEMA Twistlock Photocell Receptacle (not compatible with finials, wall mount lishop arms or pendant mounting)</p>
<p>Lamp Wattage ² MP 50= 50W 70= 70W 100= 100W 150= 150W MH ³ 175= 175W HPS 50= 50W 70= 70W 100= 100W 150= 150W <u>Compact Fluorescent ⁴</u> 42= 42W 57= 57W⁵</p>	<p>Optical System <u>Horizontal Lamp</u> 2S= Type II 3S= Type III 4S= Type IV 5S=Type V SL=Forward Throw w/¹¹ Spill Light Eliminator <u>Vertical Lamp</u> 3R=Type III Glass Reflector 5R=Type V Glass Reflector MA=Milky White Acrylic Jar</p>	<p>Mid Section Type SO= Solid WN= Window LV= Louvered ST= Slot SR= Solid Rings LR= Luminous Rings <u>Optional Mid Section Type</u> LRR= Luminous Rings - Red LRB=Luminous Rings - Bright Blue LRG=Luminous Rings - Deep Green LRO=Luminous Rings - Warm Orange</p>	<p>Options ¹⁴ F= Single Fuse (120, 277 or 347V) Specify Voltage FF= Double Fuse (208, 240 or 480V) Specify Voltage Q= Quartz Restrike¹⁵ EM=Quartz Restrike w/ Time Delay¹⁵ (Also Strikes at Cold Start) EM/SC=Quartz Emergency Separate¹⁵ Circuit HS=House Side Shield¹⁶ WG=Wire Guard PMA8=Pendant Mount 48" Length¹⁷ or Specify Pendant Length Inches (XX) NG=No Glow Luminous Mid Section¹⁸ L=Lamp Included</p>	

Notes: 1. Arm not included. Use with INVUE brand arms. See accessories. 2. All HID lamps are medium-base. 3. Mid products available for non-U.S. markets only. 4. Available in Type 2S, 4S, and 5S, and all vertical optical systems only. 5. Nominal M.C.L. lamp length of 57" CFL not to exceed 7". 6. CFL ballasts are 120 through 277V. Specify with UNV voltage designation. 7. Products also available in non-US voltages and 50Hz for international markets. Consult factory for availability and ordering information. 8. Dual-tap is 120/277V wired 277V. 9. Multi-tap is 120/208/240/277V wired 277V. 10. Triple-tap is 120/277/347V wired 347V. 11. SLE only available with Solid Mid Section (SO) or with No Glow Luminous Mid Section (NG) option. 12. Maximum wattage of 160W HID. Not available with Wire Guard. 13. Custom and B.A.L. color matching available upon request. Consult your INVUE Lighting Systems Representative for further information. 14. Add as suffix in the order shown. 15. Quartz options not available with SL optic, or vertical lamped optical systems. 16. House side shield available on horizontally lamped 2S, 3S, and 4S optical systems only. 17. Minimum pendant length is 9.5". Lengths over 4' Consult Invue Lighting Systems representative. Included is 3/4" pendant pipe in specified length, swivel hanger and canopy cover. Swivel under canopy uses 3/4" NPT thread, fixture head uses 3/4" NPSM, 2 3/4" long thread. "EM" option must be used with INVUE Pendant Kit only. 18. NG option retains daytime appeal of window, louvered, slot, solid rings or luminous rings mid section styles, but does not allow light into the upper chamber of the housing. Mid section will not glow at night, maintaining the cutoff control associated with the standard solid mid section. 19. Order separately, replace XX with color suffix. 20. Add as suffix to accessory. Example: VA6109-BK-R. 21. Finials compatible with Traditional Arms only. 22. Requires use of 4" O.D. round straight pole.



DESCRIPTION

Entri LED features a classic and stylish design with the added benefits of solid state lighting technology, offering outstanding uniformity and energy savings. Using Cooper Lighting's proprietary LED LightBAR™ technology and AccuLED optical systems, Entri LED offers designers vast versatility in system design, function and performance. Use Entri LED for wall mount architectural lighting applications and egress lighting requirements. UL/cUL listed for use in wet locations.

Catalog #		Type	
Project		Date	
Comments			
Prepared by			

SPECIFICATION FEATURES

Construction

HOUSING: Heavy wall, one-piece, die-cast aluminum construction for precise tolerance control and repeatability in manufacturing. Integral extruded aluminum heat sink provides superior thermal heat transfer in +40°C ambient environments. Housing and heat sink are designed to offer various options for down lighting, up lighting or a combination of both up and down. **FACEPLATE / DOOR:** One-piece die-cast aluminum construction. Captive, side hinged faceplate swings open via release of one (1) flush mount die-cast aluminum latch on housing side panel. Door closure and seal is ensured through a robust and positive retention bale latch which upon closing can be heard through distinct sound. **GASKET:** One-piece molded silicone gasket mates perfectly between the door and housing for repeatable seal. Silicone wire way plug on housing back wall seals incoming electrical leads to prevent moisture and dust entry. **LENS:** Uplight lens is impact resistant, 5/32" thick tempered frosted glass sealed to housing with continuous bead silicone gasket. Downlight lens is LED board integrated acrylic over-optics, each individually sealed for IP66 rating. **HARDWARE:** Stainless steel mounting screws and latch hardware allow access to electrical components for installation and servicing.

Optics

DISTRIBUTION: Primary downlight distribution offers a choice of six (6) patented, high-efficiency AccuLED Optics™, that maximize light collection and direction distribution onto the application region. Each optical lens is precision manufactured via injection-molding, then precisely arranged and sealed on the board media. Optional uplight LED distribution features a diffuse soft glow for enhancing architectural scenes or accentuating structural features. **LEDs:** High output LEDs, 50,000+ hours life at >70% lumen maintenance, offered standard in 4000K (+/- 275K) CCT and nominal 70 CRI.

Electrical

DRIVER: LED drivers are potted and heat sunk for optimal performance and prolonged life. Standard drivers feature electronic universal voltage (120-277V/50-60Hz), greater than 0.9 power factor, less than 20% harmonic distortion and feature ambient temperature range of +40°C (104°F) down to minimum starting temperature of -30°C (-22°F). Shipped standard with Cooper Lighting proprietary circuit module designed to withstand 10kV of transient line surge. Options to control light levels, energy savings and egress capabilities (battery pack and separate circuit) are available. All LED LightBARs™ and drivers are mounted to a primary mounting plate and are easily replaced by use of quick disconnects for ease of wiring.

Mounting

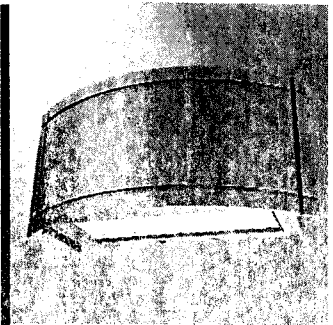
JUNCTION BOX: Standard with zinc plated quick-mount junction box plate that mounts directly to 4" J-Box. LightBARs mount facing downward. Fixture slides over mounting plate and is secured with two (2) stainless steel fasteners. Mounting plate features a one-piece EPDM gasket on back side of plate to firmly seal fixture to wall surface, forbidding entry of moisture and particulates. Optional mounting arrangements utilize a die-cast mounting adaptor box to allow for LED battery pack, surface conduit and through branch wiring. Entri LED is approved for mounting on combustible surfaces.

Finish

Housing is finished in 5-stage SuperTGIC polyester powder coat paint, 2.5 mil nominal thickness for superior protection against fade and wear. LightBAR™ cover plates are standard white and may be specified to match finish of luminaire housing. Standard colors include black, bronze, grey, white, dark platinum and graphite metallic. RAL and custom color matches available. Consult Outdoor Architectural Colors brochure for a complete selection.

Warranty

Entri LED features a five-year limited warranty.



**ENV
ENTRI LED
ROUND REVEALS**

**1 - 2 LightBAR
Solid State LED**

**ARCHITECTURAL WALL
LUMINAIRE**

CERTIFICATION DATA

- UL/cUL Listed
- ISO 9001
- IP66 LightBARs
- ARRA Compliant
- LM79 / LM80 Compliant

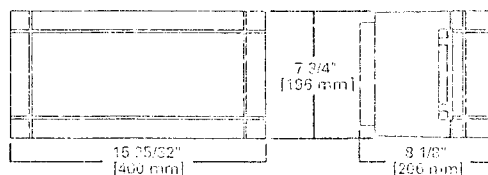
ENERGY DATA

- Electronic LED Driver
- >0.9 Power Factor
- <20% Total Harmonic Distortion
- 120-277V/50 & 60Hz, 347V/60Hz, 4-w/60Hz
- 30°C Minimum Temperature
- 49°C Ambient Temperature Rating

SHIPPING DATA

- Approximate Net Weight:
- 16 lbs. (7.3 kgs.)

DIMENSIONS



CONDUIT MOUNT / BATTERY BACK BOX



POWER AND LUMENS BY BAR COUNT

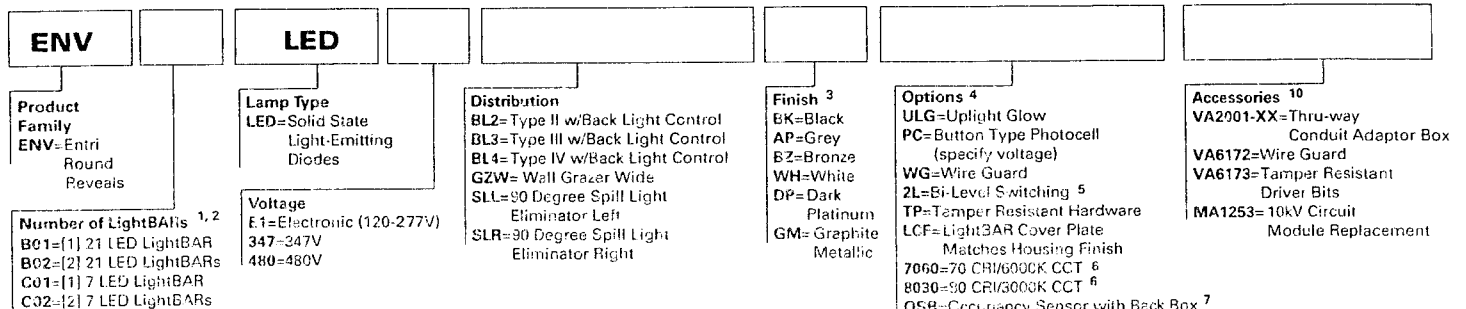
LUMEN MULTIPLIER

Number of LightBARs	DISTRIBUTION							
	Power [Watts]	Current @ 120V [A]	Current @ 277V [A]	BL2	BL3	BL4	GZW	SLR/ SLL
7 LED LIGHTBAR								
C01	27	0.23	0.13	1,704	1,615	1,686	1,688	1,550
C02	54	0.46	0.21	3,408	3,230	3,372	3,375	3,099
21 LED LIGHTBAR								
B01	27	0.23	0.13	1,770	1,625	1,720	1,725	1,571
B02	51	0.43	0.20	3,540	3,249	3,440	3,450	3,142

Ambient Temperature	Lumen Multiplier
10°C	1.04
15°C	1.03
25°C	1.00
40°C	0.96

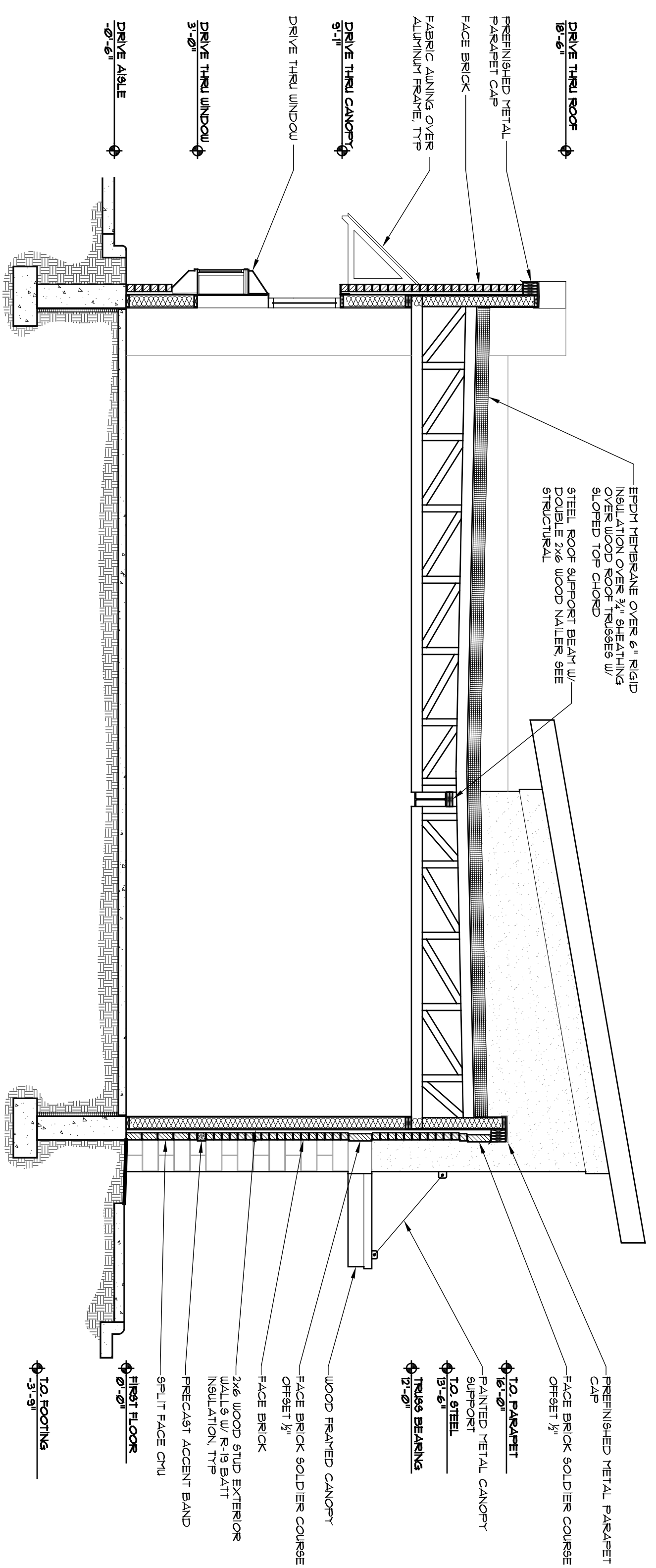
ORDERING INFORMATION

SAMPLE NUMBER: ENV-B02-LED-E1-BL3-GM

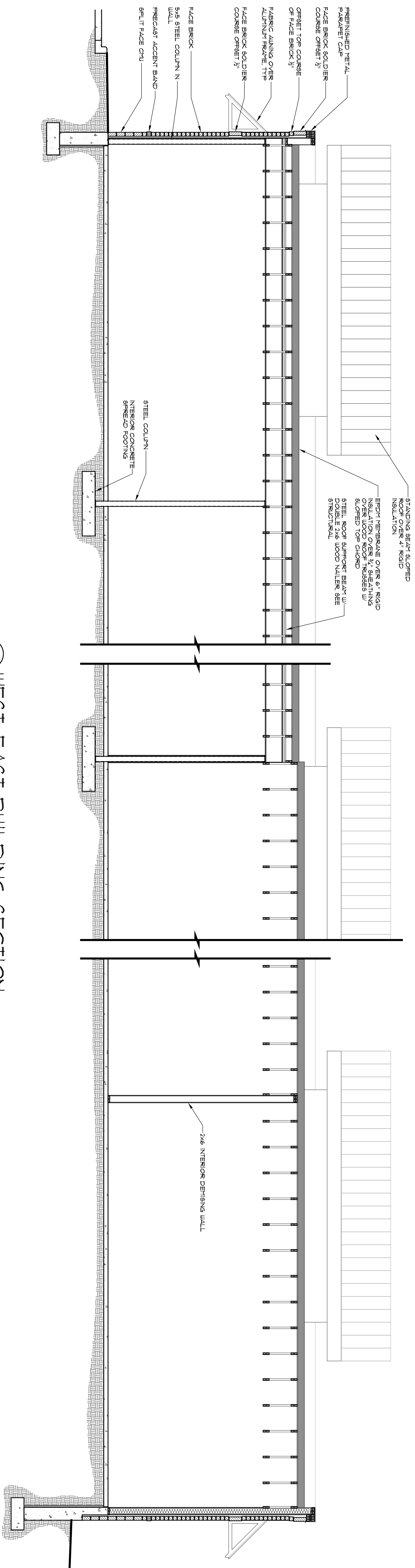


NOTES:

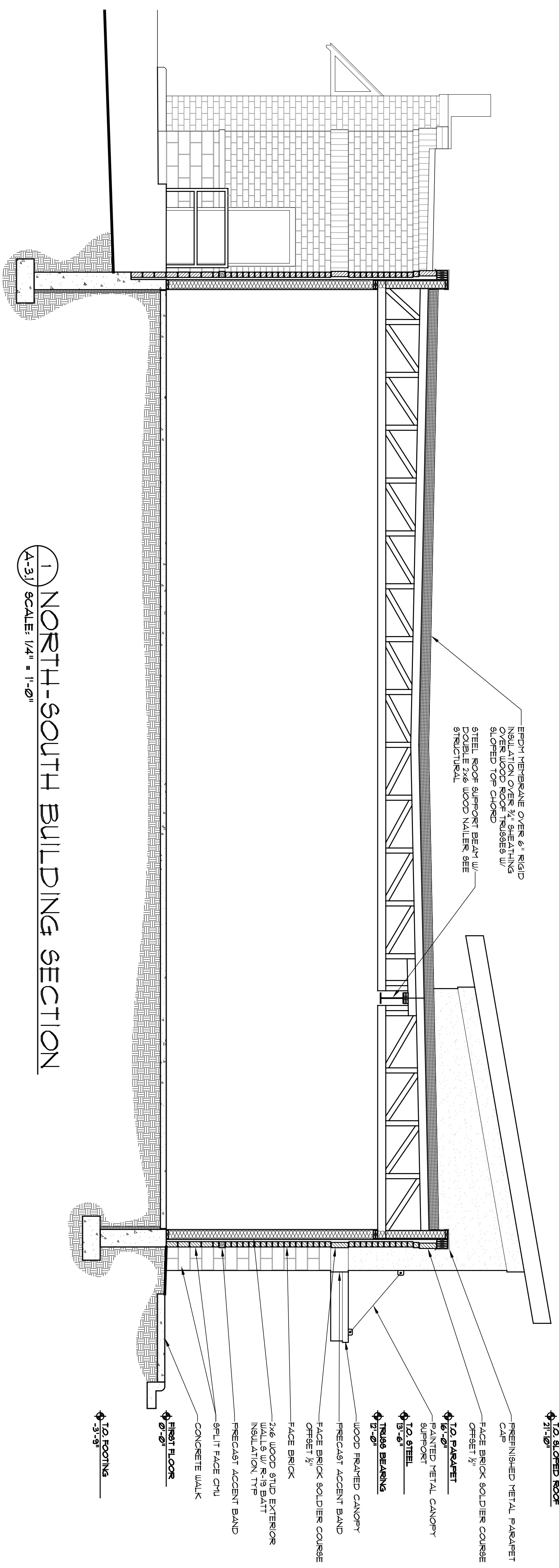
- Standard 4000K CCT and nominal 70 CRI LightBARs for downlight use only.
- 21 LED LightBAR powered at 350mA, 7 LED LightBAR powered at 1A.
- Consult factory for availability.
- Custom and RAL color matching available upon request. Consult your customer service representative for further information.
- Add as suffix in the order shown.
- Low-level output varies by bar count, consult factory. Not available with 247V or 480V. Available with 2 Bars (B02 or C02) only.
- Consult customer service for lead times and lumen multiplier.
- Available with B02 or C02, only (1) LightBAR on street side will be wired to sensor. Time Delay factory setting 15 minutes. When ordered with Option PC, both light bars will connected to photocell as primary switching means. Standard sensor lens covers 8-foot mount height, 360-degree coverage, maximum 48 foot diameter. Not available in all configurations or with BBB or CWB options.
- Specify 120 or 277V. LED standard integral battery pack is rated for minimum operating temperature 32°F (0°C). Operates (1) lightbar for 90 minutes. Not available in all configurations or with OSB option. Consult factory.
- Specify 120 or 277V. LED cold weather integral battery pack is rated for minimum operating temperature -4°F (-20°C). Operates (1) lightbar for 90 minutes. Not available in all configurations or with OSB option.
- Order separately, replace XX with color suffix.



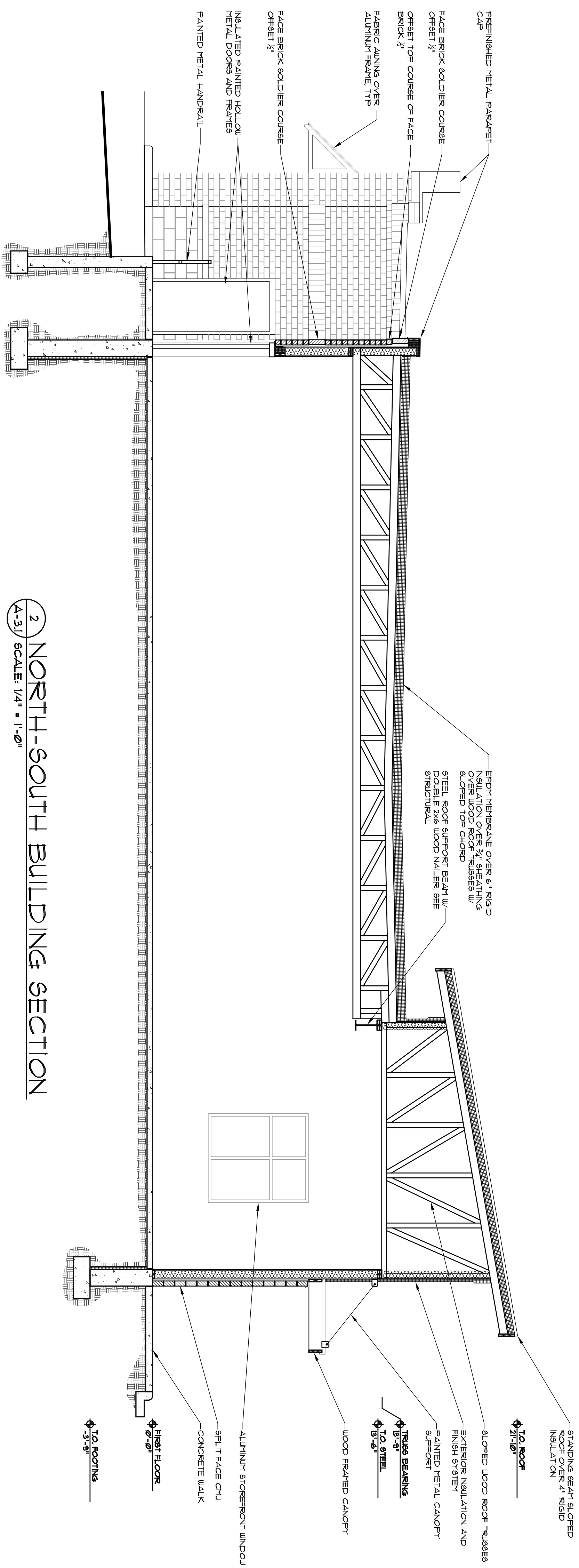
1 NORTH-SOUTH BUILDING SECTION
A-32 SCALE: 1/4" = 1'-0"



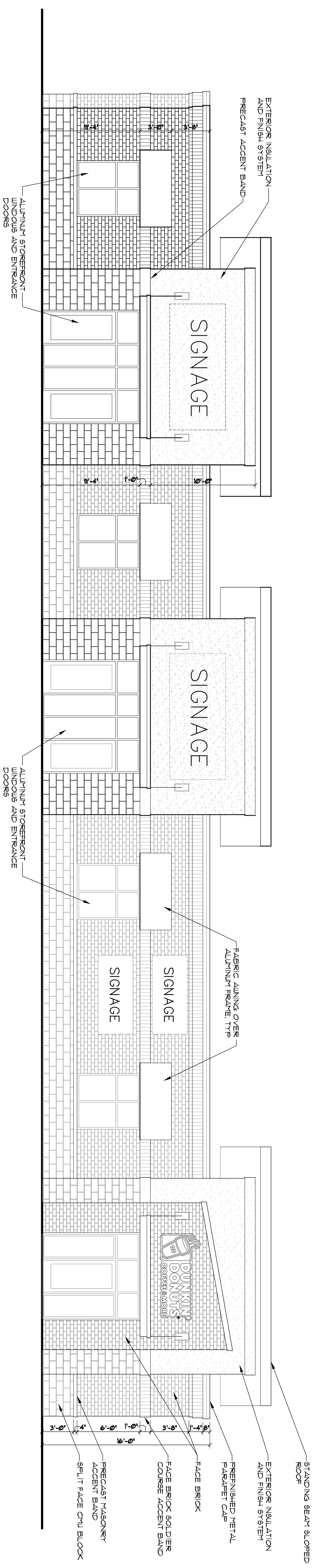
2 WEST-EAST BUILDING SECTION
A-32 SCALE: 1/4" = 1'-0"



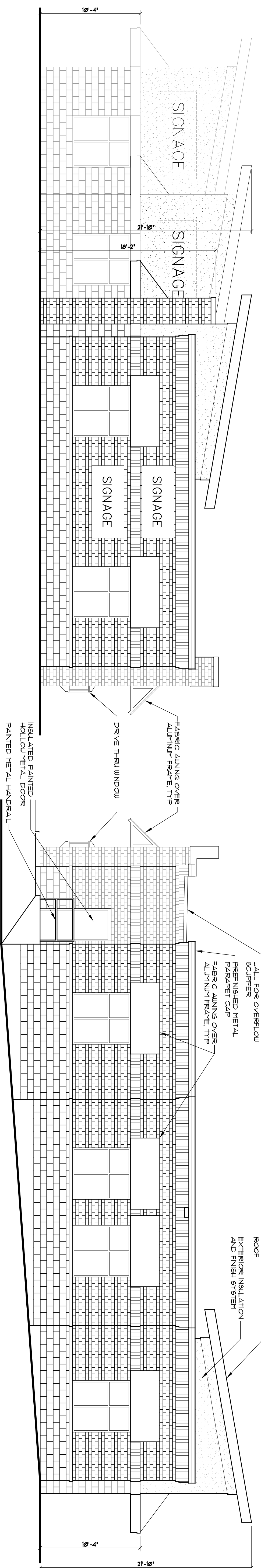
1 NORTH-SOUTH BUILDING SECTION
 A-31/ SCALE: 1/4" = 1'-0"



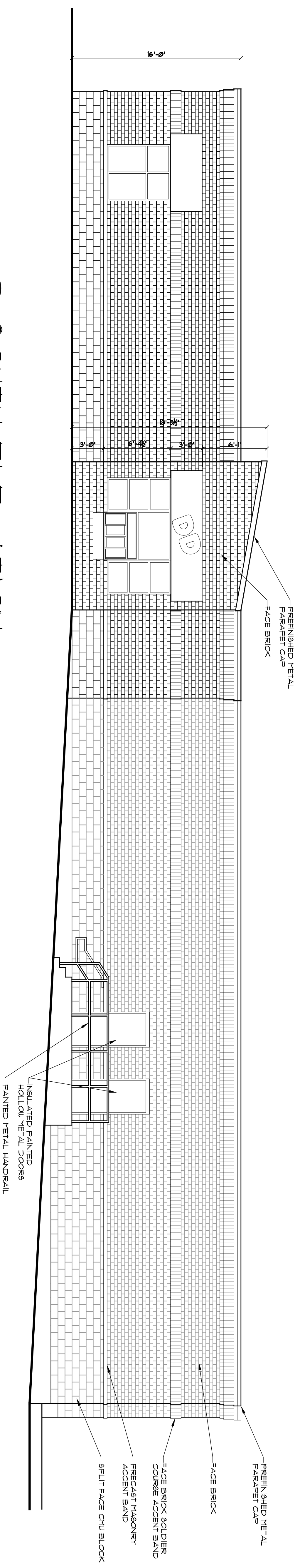
2 NORTH-SOUTH BUILDING SECTION
 A-31/ SCALE: 1/4" = 1'-0"



1 NORTH ELEVATION
A-21 SCALE: 3/16" = 1' - 0"

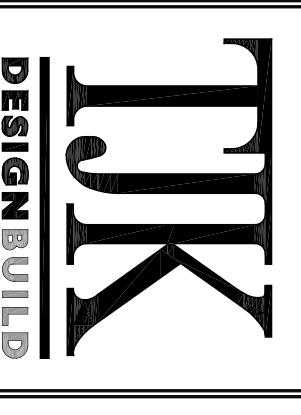


3 EAST ELEVATION
A-21 SCALE: 3/16" = 1' - 0"



2 WEST ELEVATION
A-21 SCALE: 3/16" = 1' - 0"

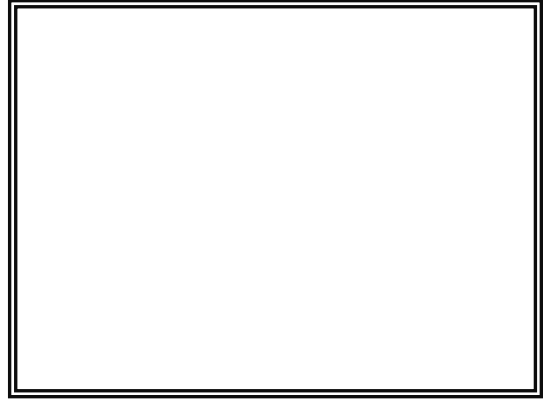
4 SOUTH ELEVATION
A-21 SCALE: 3/16" = 1' - 0"



634 West Main Street
Madison, WI 53703
608-257-1090
FAX 608-257-1092

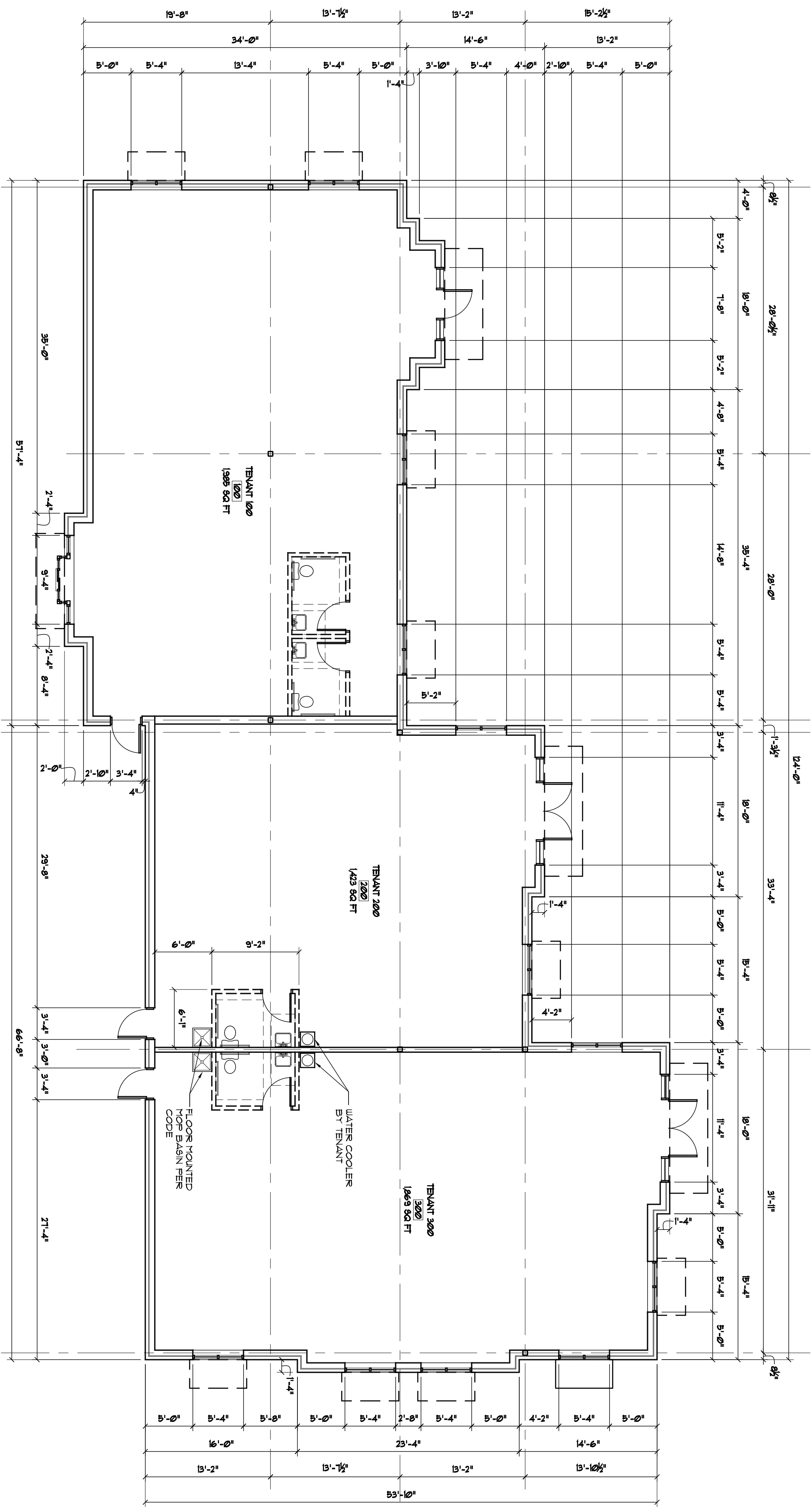
REV	DATE

COPYRIGHTED DRAWING
 No part of this drawing may be reproduced or transmitted in any form or by any means, electronic or mechanical, including photocopying, recording, or by any information storage and retrieval system, without the prior written permission of the author. This drawing is the property of the author and is loaned to the client for their use only. It is not to be used for any other project without the prior written permission of the author. The author shall not be held responsible for any errors or omissions in this drawing.

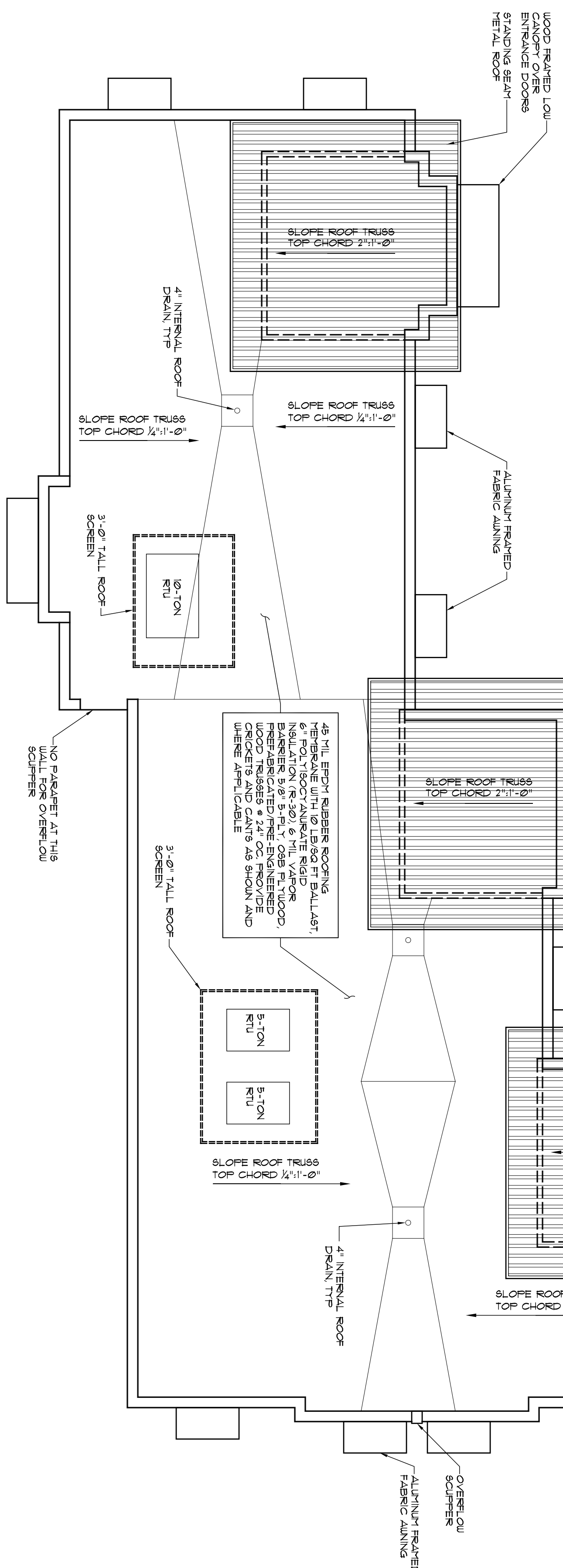


PROPOSED FACILITY FOR:
MULTI-TENANT RETAIL BUILDING WITH DRIVE-THRU
 133 SOUTH GAMMON ROAD
 MADISON, WISCONSIN

A-2.1
 11.8.11



1 FLOOR PLAN
A-11 SCALE: 1/8" = 1'-0"



2 ROOF PLAN
A-11 SCALE: 1/8" = 1'-0"

GENERAL NOTES

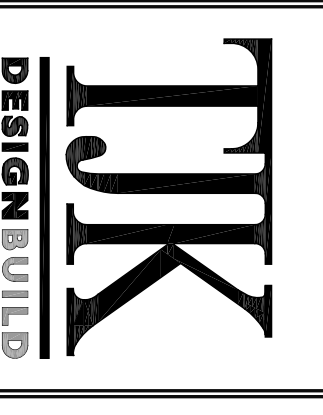
1. MAISON TO USE COLORED HORIZONTAL HATCH ADJACENT BLOCK.
2. ALL GLAZING WITHIN A 2'-0" ARC OF EITHER VERTICAL EDGE OF THE DOOR IN A CLOSED POSITION. SPACER NEED TO BE TEMPERED (SEE CLASH CHECK).
3. TYPICAL TENANT: 3 5/8" 20 GAUGE STEEL STUDS AT 24" O.C. TALL HEIGHT WITH SOUND BOARD ON BOTH SIDES TO STRUCTURE (ALSO WORD OVERHUNG) TAPE AND FINISH TO 8'-0" READY FOR PAINT.
4. AIR INTAKE: AIR INTAKE BANNER, 1/8" O.D. SHEATHING, 1 X 6 WOOD STUDS CANTILEVER BANNER, 5/8" STRIP WALL BOARD TO 2'-0" (ALSO NOTED OTHERWISE), FINISH TO 8'-0" READY FOR PAINT.
5. MASONRY OR BRICK VENEER. (SEE ELEVATIONS). 1" AIR SPACE.

SITE CONSTRUCTION NOTES:

1. ELECTRICAL TO PROVIDE (2) 600V CIRCUITS PER TENANT SUITE WITH PHOTO CELL, / OTHER OR LINED TO THE INDIVIDUAL SUITE PANELS. JUNCTION BOX FOR 600V AND LIGHTING TO BE FLUSH MOUNTED ON BUILDING. (NOT SURFACE MOUNTED).
2. PROVIDE AND INSTALL DUCTWORK, FLEX AND DISCHARGES IN TO CEILING GRID FOR STANDARD WHITE BOX.
3. PROVIDE AND INSTALL STAIRWELL 3' x 4' RECESSED CEILING TILE IN STANDARD GRID AT 8'-0".
4. PROVIDE AND INSTALL DUCTWORK, FLEX AND DISCHARGES IN TO CEILING GRID FOR STANDARD WHITE BOX.
5. PROVIDE AND INSTALL STAIRWELL 3' x 4' RECESSED CEILING TILE IN STANDARD GRID AT 8'-0".
6. PROVIDE AND INSTALL DUCTWORK, FLEX AND DISCHARGES IN TO CEILING GRID FOR STANDARD WHITE BOX.
7. PROVIDE AND INSTALL STAIRWELL 3' x 4' RECESSED CEILING TILE IN STANDARD GRID AT 8'-0".
8. PROVIDE AND INSTALL DUCTWORK, FLEX AND DISCHARGES IN TO CEILING GRID FOR STANDARD WHITE BOX.
9. PROVIDE AND INSTALL STAIRWELL 3' x 4' RECESSED CEILING TILE IN STANDARD GRID AT 8'-0".
10. PROVIDE AND INSTALL DUCTWORK, FLEX AND DISCHARGES IN TO CEILING GRID FOR STANDARD WHITE BOX.
11. (2) PHONE / DATA CONNECTION PER SUITE WITH END CONNECTIONS AND CABLEING.
12. BATHROOM LIGHTING TO BE A SINGLE TUB - THREE SURFACE MOUNTED JELLY FIXTURE.
13. BATHROOM FIXTURES TO BE CT WITH 6" CT BASE.
14. BATHROOM DOORS TO BE 3'-0" x 7'-0" SQ. TO COME OAK DOOR IN LQU. METAL FRAMED WITH 2X SERIES PRIVACY LOCK. (DOORS TO BE STAINED / FRAMES TO BE PAINTED).
15. BATHROOMS TO HAVE EXHAUST FANS VENTED THRU ROOF BY HVAC CONTRACTOR.
16. PROVIDE CONTRACTOR TO PROVIDE (1) - 6-5/8" ALLON ELECTRIC WATER HEATER MOUNTED ABOVE ROOF ON PL. WOOD PLATFORM.
17. 2 X 4 VINYL COATED SHEETROCK CEILING AT 8'-0".

TOILET ROOM NOTES:

- BATHROOM LIGHTING TO BE A SINGLE TUB - THREE SURFACE MOUNTED JELLY FIXTURE.
- BATHROOM FIXTURES TO BE CT WITH 6" CT BASE.
- BATHROOM DOORS TO BE 3'-0" x 7'-0" SQ. TO COME OAK DOOR IN LQU. METAL FRAMED WITH 2X SERIES PRIVACY LOCK. (DOORS TO BE STAINED / FRAMES TO BE PAINTED).
- BATHROOMS TO HAVE EXHAUST FANS VENTED THRU ROOF BY HVAC CONTRACTOR.
- PROVIDE CONTRACTOR TO PROVIDE (1) - 6-5/8" ALLON ELECTRIC WATER HEATER MOUNTED ABOVE ROOF ON PL. WOOD PLATFORM.
- 2 X 4 VINYL COATED SHEETROCK CEILING AT 8'-0".



634 West Main Street
Madison, WI 53703
608-257-1090
FAX 608-257-1092

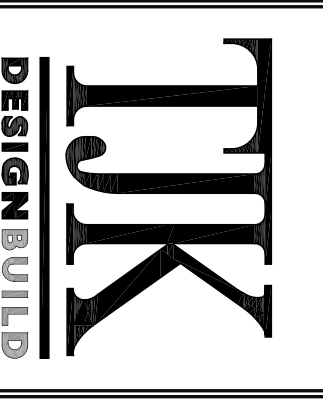
REV DATE

COPYRIGHTED DRAWING
NO PART OF THIS DRAWING IS TO BE REPRODUCED OR TRANSMITTED IN ANY FORM OR BY ANY MEANS, ELECTRONIC OR MECHANICAL, INCLUDING PHOTOCOPYING, RECORDING, OR BY ANY INFORMATION STORAGE AND RETRIEVAL SYSTEM, WITHOUT THE WRITTEN PERMISSION OF THE ARCHITECT. THIS DRAWING IS THE PROPERTY OF THE ARCHITECT AND IS TO BE KEPT IN CONFIDENCE. ANY UNAUTHORIZED REPRODUCTION OR USE OF THIS DRAWING IS PROHIBITED. THE ARCHITECT ASSUMES NO LIABILITY FOR ANY DAMAGE OR LOSS OF ANY KIND, INCLUDING CONSEQUENTIAL DAMAGES, ARISING FROM THE USE OF THIS DRAWING.

PROPOSED FACILITY FOR:
MULTI-TENANT
RETAIL BUILDING
PLATTEVILLE, WISCONSIN

A-11

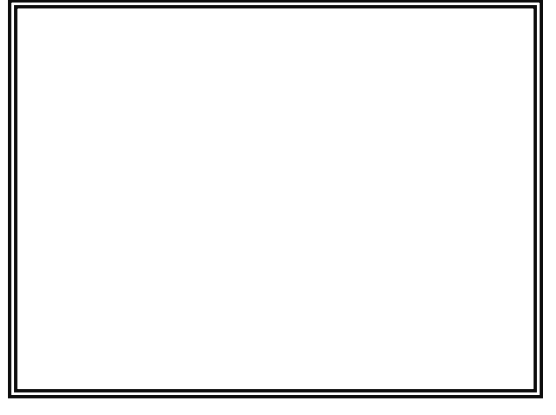
11.8.11



634 West Main Street
Madison, WI 53703
608-257-1090
FAX 608-257-1092

REV DATE

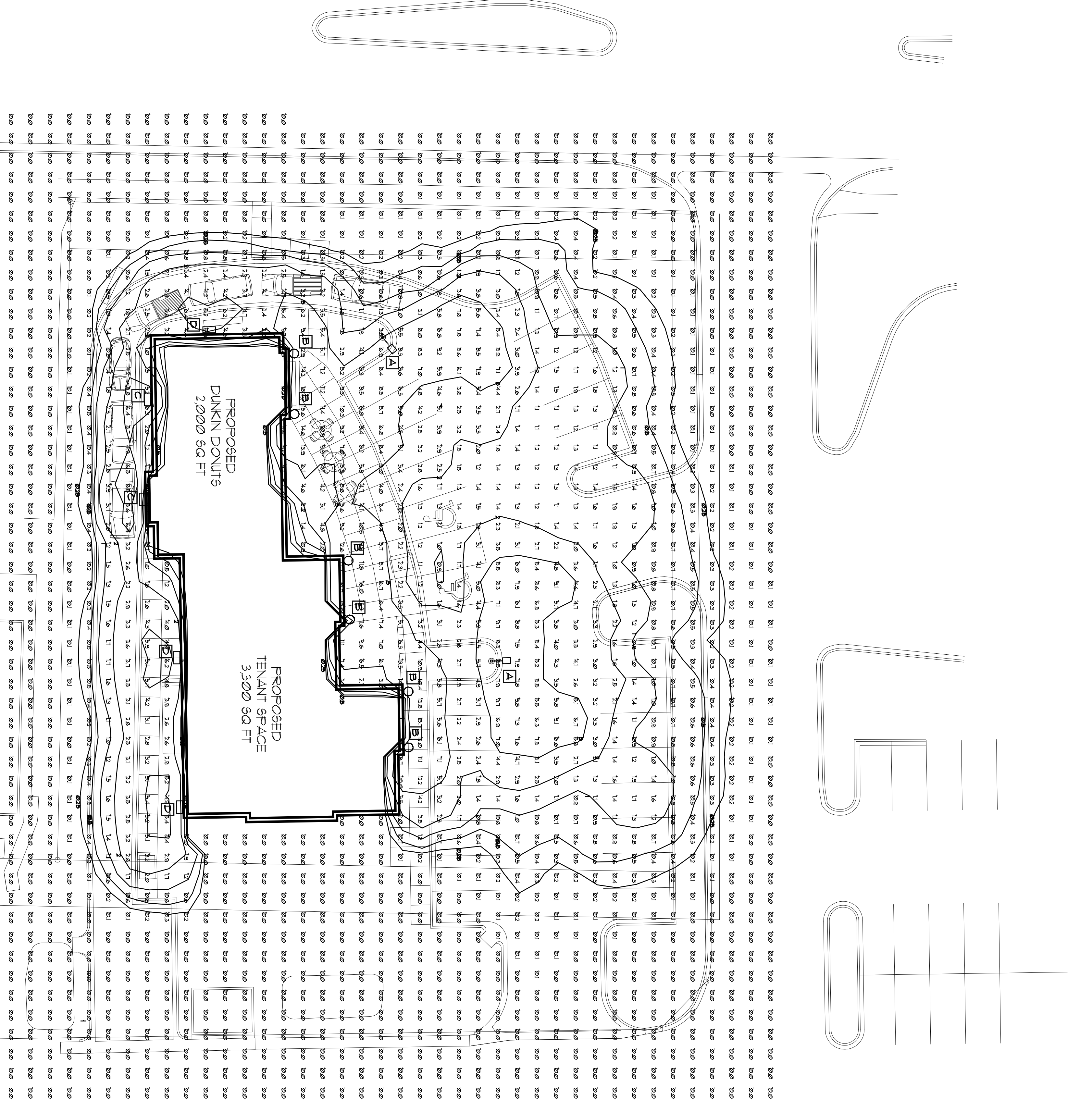
COPYRIGHTED DRAWING
RIGHTS RESERVED. WITHOUT THIS
STATEMENT, ANY REPRODUCTION,
DISTRIBUTION, LEAD OR DISCLOSED
HEREIN IS UNAUTHORIZED IN ANY
MANNER BY TK DESIGN BUILD.



PROPOSED FACILITY FOR:
**MULTI-TENANT RETAIL
BUILDING WITH DRIVE-THRU**

133 SOUTH GAMMON ROAD
MADISON, WISCONSIN 53711

C-14
11.8.11



1 PHOTOMETRIC PLAN
C-14 SCALE: 1" = 16'-0"
0' 5' 10' 15' 20' 25' 30'

NORTH

LIGHT FIXTURE KEY

- A** COOPER LIGHTING, INVUE 400W MH SINGLE HEAD PARKING LOT LIGHT FIXTURES MODEL # 100-400-HH-XX-48-DP-H6 (8'-0" X 3'-0" STEEL POLE ON 3'-0" CONC. BASE) (8'-0" FROM GRADE)
- B** COOPER LIGHTING, INVUE COOPER LIGHTING, INVUE EPIC MODERN MEDIUM WALL MOUNTED LIGHT FIXTURE (8'-0" FROM GRADE); MODEL #EM-M-10-MP-XX-25-XX-XX-XX-DP (8'-0" FROM GRADE)
- C** COOPER LIGHTING, INVUE ENTR LED WAL-FAC LIGHT FIXTURE CATALOG # ENV-400-LED-EI-BL2-DP (9'-0" FROM GRADE)
- D** COOPER LIGHTING, INVUE ENTR LED WAL-FAC LIGHT FIXTURE CATALOG # ENV-400-LED-EI-BL4-DP (9'-0" FROM GRADE)

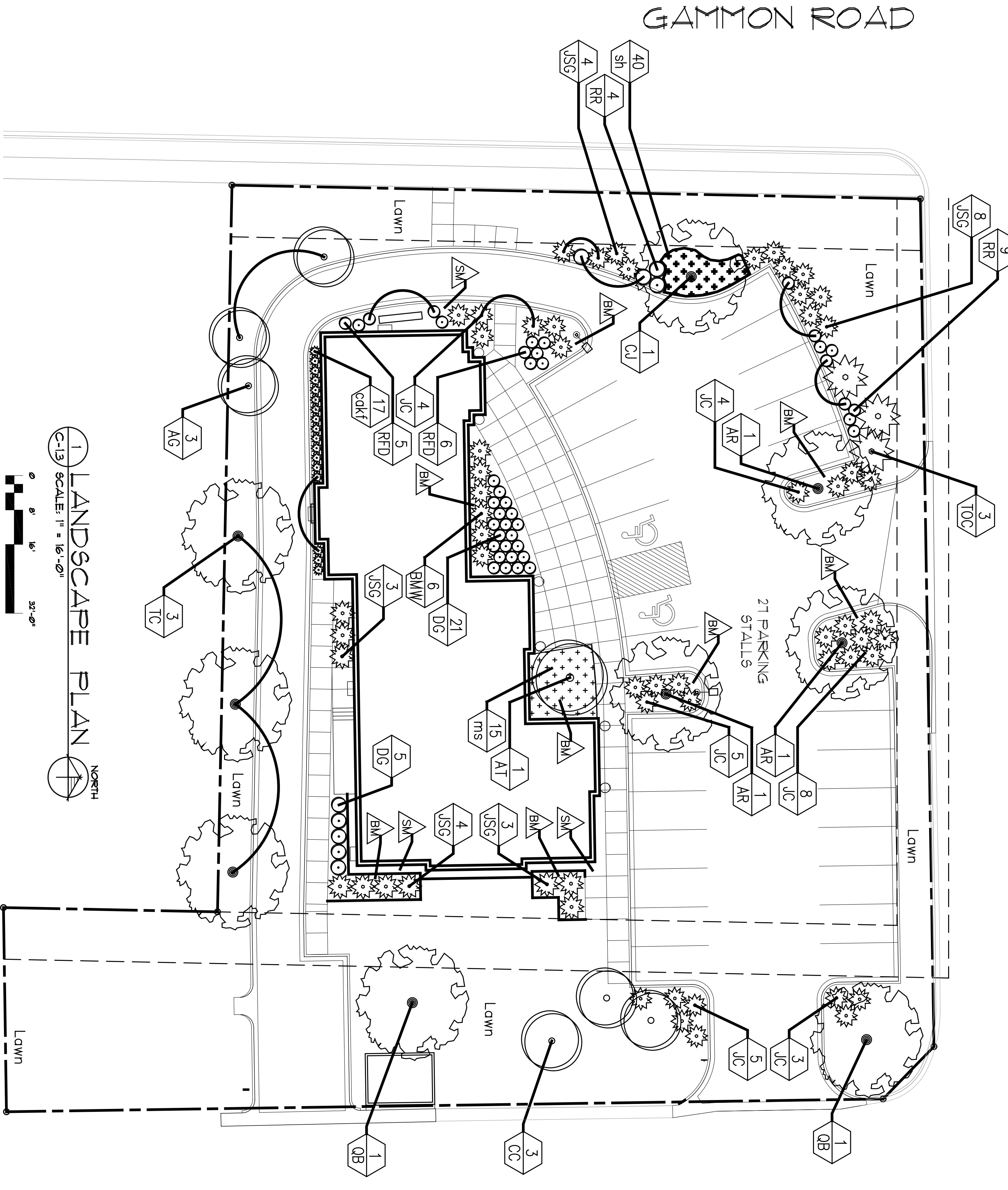
STATISTICS

Description	Symbol	Avg f/c	Max f/c	Min f/c	Max/min	Avg/min
Calc Zone 1	+	11 f/c	181 f/c	00 f/c	N/A	N/A

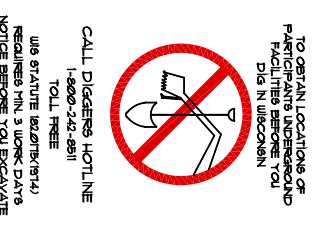
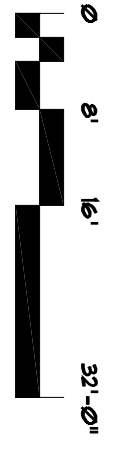
PLANT SCHEDULE AND LEGEND

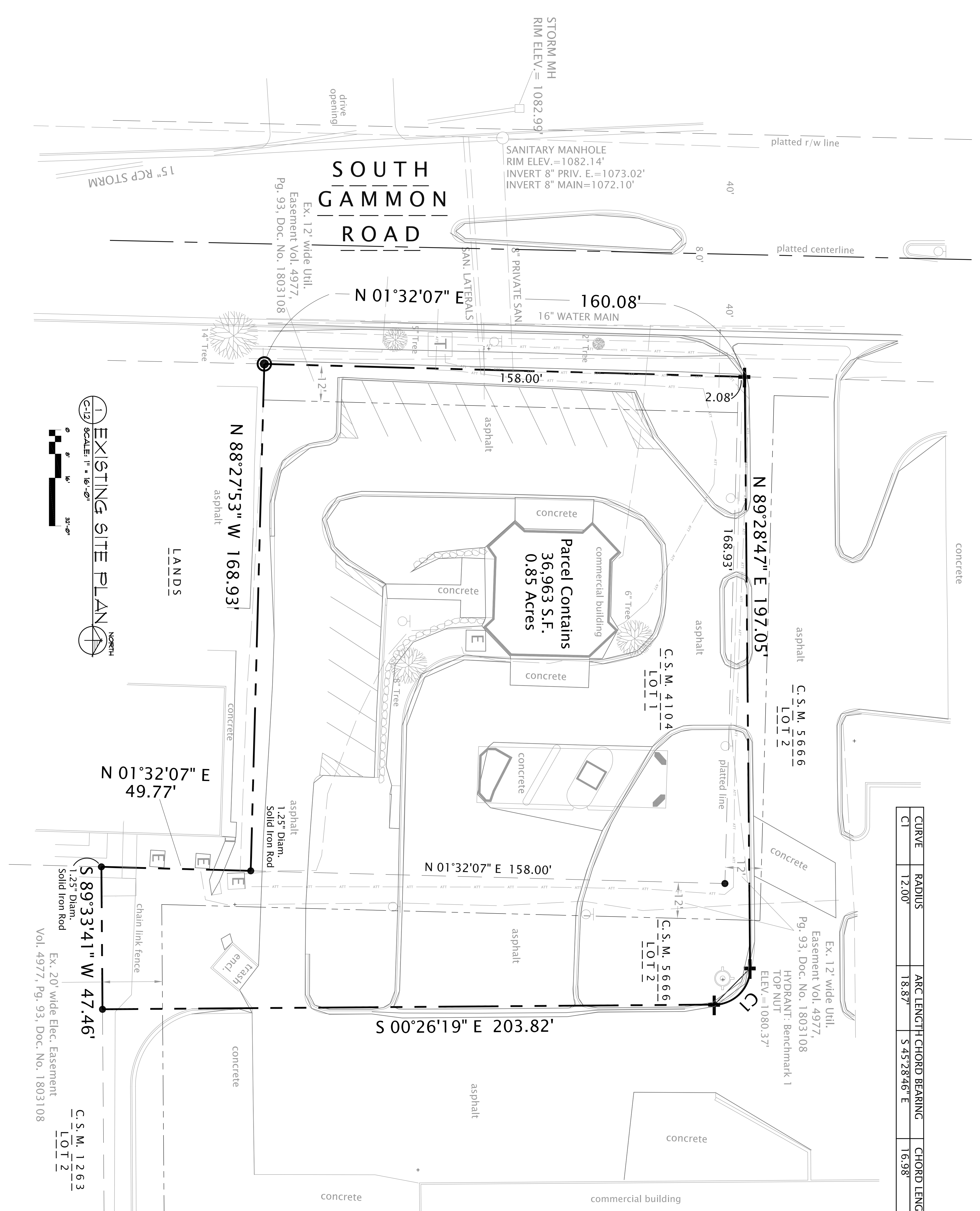
Key	Botanical Name	Common Name	Qty	Planting Size	Root Spacing	Comments
Major Deciduous Trees						
AR	Acer rubrum 'Red Sunet'	Red Sunet Maple	3	2-2 1/2" cal	B&B	As shown Straight leader
CJ	Cercidiphyllum japonicum	Katsuratake	1	2-2 1/2" cal	B&B	As shown Straight leader
QB	Quercus bicolor	Swamp White Oak	2	2-2 1/2" cal	B&B	As shown Straight leader
TC	Tilia cordata 'Greenspire'	Greenspire Littleleaf Linden	3	2-2 1/2" cal	B&B	As shown Straight leader, matched
Minor Deciduous Trees						
AT	Acer triflorum	Three-flower Maple	1	6" HT min	B&B	As shown Multi-stem
AG	Amelanchier grandiflora 'Princess Diana'	Princess Diana Serviceberry	3	6" HT min	B&B	As shown Multi-stem, matched full plants
CC	Cercis canadensis	Eastern Redbud	4	6" HT min	B&B	As shown Multi-stem, full plants
Evergreens						
BMW	Buxus microphylla 'Wintergreen'	Wintergreen Boxwood	6	18" HT min	CONT	As shown Full plants, matched
JCS	Juniperus chinensis 'Sea Green'	Sea Green Juniper	22	3" HT min	B&B	As shown Full plants
JC	Juniperus conferta	Stone Juniper	29	3" HT min	B&B	As shown Full plants
TCC	Thuja occidentalis 'Columbia'	Columbia Arborvitae	3	3" HT min	CONT	As shown Full plants, matched
Deciduous Shrubs						
DG	Deutzia gracilis 'Chardonny Pearls'	Chardonny Pearls Deutzia	26	18" HT min	CONT	As shown Full, matched plants
IV	Ilex virginica 'Little Henry'	Little Henry Sweetspire	7	18" HT min	CONT	As shown Full, matched plants
RR	Rosa rugosa 'Foxi'	Foxi Pavement Rose	13	18" HT min	CONT	As shown Full, matched plants
RFD	Rosa rugosa 'Frau Dagmar Hartopp'	Frau Dagmar Hartopp Rose	11	18" HT min	CONT	As shown Full, matched plants
Perennials, Grasses and Groundcovers						
cdkt	Colomenopsis scutifolia	Karl Foersterkorn Foerster Grass	17	1 GAL	CONT 24" o.c.	Full, matched plants
ms	Mateuocia struthioflora	Grain Fern	15	1 GAL	CONT 24" o.c.	Full, matched plants
sh	Sporobolus heterolepis	Prairie Dropseed	40	1 GAL	CONT 24" o.c.	Full, matched plants

▲ SM Stone Mulch ▲ BM Shredded Bark Mulch

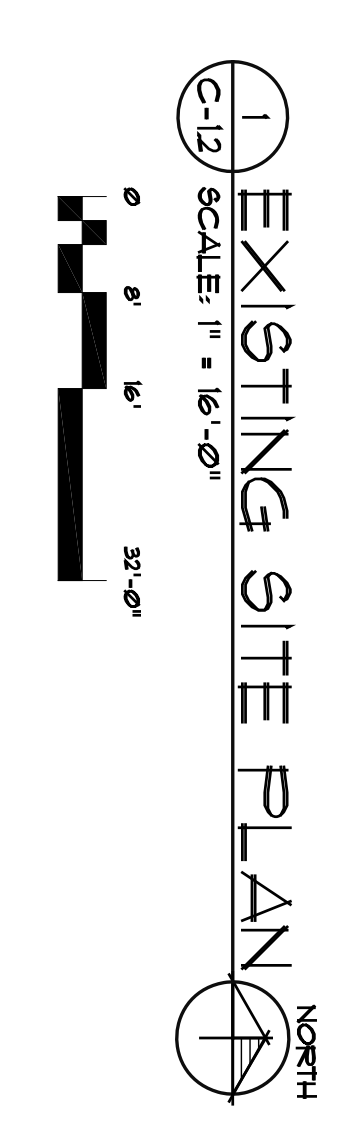


1 LANDSCAPE PLAN
SCALE: 1" = 16'-0"
NORTH



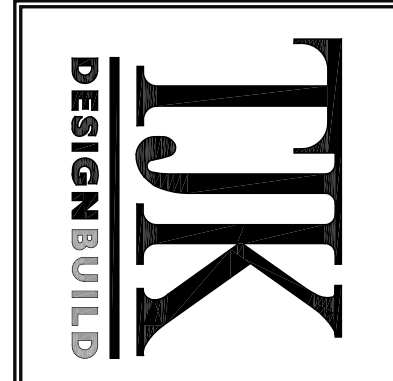


CURVE	RADIUS	ARC LENGTH	CHORD BEARING	CHORD LENGTH	DELTA ANGLE
C1	12.00'	18.87'	S 45°28'46\" E	16.98'	90°04'54\"



C.S.M. 1 2 6 3
 LOT 2
 Ex. 20' wide Elec. Easement
 Vol. 4977, Pg. 93, Doc. No. 1803108

634 West Main Street
 Madison, WI 53703
 608-257-1090
 FAX 608-257-1092



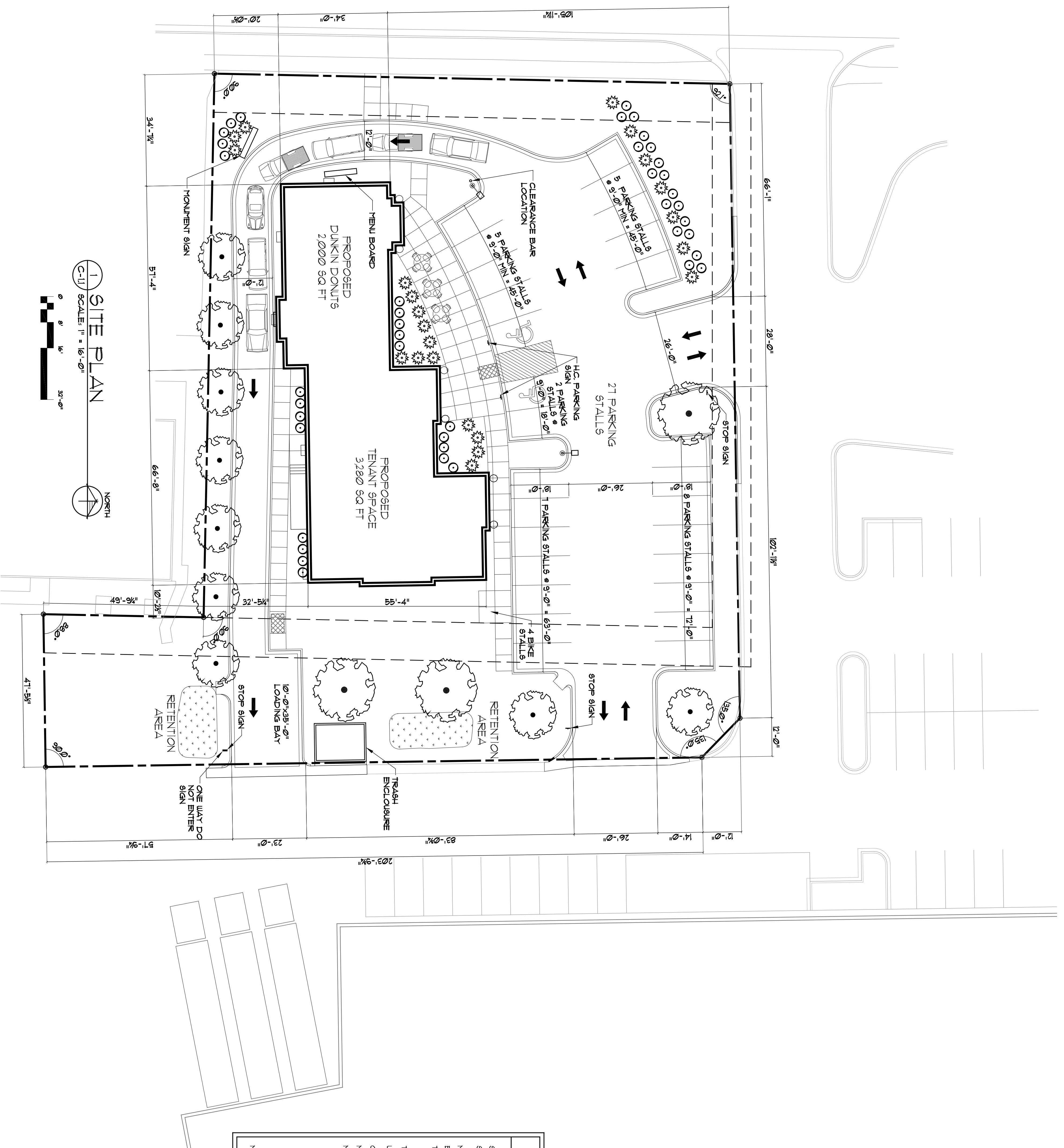
REV DATE

COPYRIGHTED DRAWING
 RIGHTS RESERVED. WITHIN THIS
 DOCUMENT, ANY REPRODUCTION,
 DISTRIBUTION, OR DISSEMINATION
 OF INFORMATION CONTAINED
 HEREIN IS UNAUTHORIZED IN ANY
 MANNER BY THE DESIGN BUILD.

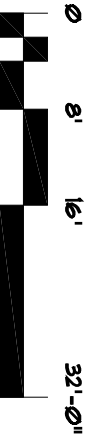
PROPOSED FACILITY FOR:
**MULTI-TENANT RETAIL
 BUILDING WITH DRIVE-THRU**
 133 SOUTH GAMMON ROAD
 MADISON, WISCONSIN 53711

C-12
 11.8.11

GAMMON ROAD



1 SITE PLAN
C-11 SCALE: 1" = 16'-0"



GENERAL NOTES:

1. ALL PAINT STRIPING SHALL BE 4" WIDE WHITE.
2. NO CURB CUTS SHALL BE MADE UNLESS THEY ARE SUBJECT TO THE CITY ENGINEER'S REVIEW AND APPROVAL. CURB CUTS SHALL BE INSTALLED ON EACH SIDE, DIAGONAL TRIM SURFACE SHALL BE 1/4" AND DEPTH OF RAMP, SEE DETAIL 3-C-11.
3. ALL DIMENSIONS ARE FROM FACE OF CONCRETE WALL, FACE OF CURB OR CENTER OF FRONT SETBACK LINE.
4. STONE BASE (4" MINIMUM) SHALL BE 1/4" COMPACTED FILL (SEE DETAIL 3-A) AND 1/4" COMPACTED FILL (SEE DETAIL 3-B).
5. ALL EXTERIOR CONCRETE SIDEWALKS TO BE REINFORCED ON #4 COMPACTED FILL (SEE DETAIL 3-C).
6. WATER SERVICE MATERIAL SHALL BE 2" COMPACTED FILL.
7. SEWER AND WATER CONSTRUCTION SHALL BE COMPLETED PRIOR TO THE START OF PUBLIC WORKS CONSTRUCTION.
8. PRIVATELY FINISHED CONSTRUCTION WITHIN THE PUBLIC RIGHT OF WAY SHALL BE CONSTRUCTED IN ACCORDANCE WITH CITY OF MADISON STANDARDS.
9. EXISTING WATER MAIN VALVES SHALL BE MARKED AND PROTECTED FOR DURATION OF CONSTRUCTION.
10. SLOPES GREATER THAN 3:1 SHALL BE LINED WITH REGION 11 MATTING.
11. PACKED MATERIAL SHALL BE COLLECTED BY THE CONTRACTOR AND RECYCLED OR REUSED FOR CONSTRUCTION OR AS REQUIRED BY THE CITY OF MADISON.
12. ACCEPTABLE SIGNAGE AT THE LEAD OF STALLS SHALL BE A MINIMUM OF 60" NICHES BETWEEN THE BOTTOM OF THE SIGN AND THE GROUND.

LEGEND:

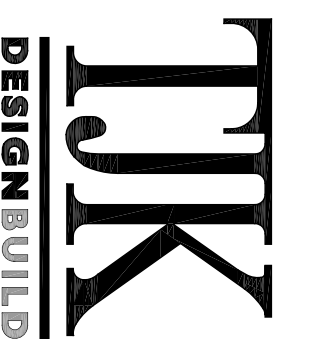
- PROPERTY CORNER
- RECOVERY LINE
- SANITARY SEWER
- STORM SEWER
- WATER MAIN
- ◇ FINE HYDRANT
- ⊗ UTILITY POLE W/ LIGHT
- MANHOLE
- WATER VALVE
- CURB INLET
- STORM SEWER ACCESS COVER
- SPOT ELEVATION
- ⊙ MONITORING WELL
- ▨ EXISTING BUILDING

PARKING LOT PLAN SITE INFORMATION BLOCK

SITE ADDRESS	MADISON, WISCONSIN
SITE ACREAGE (TOTAL)	36,320 SQ FT = 0.85 ACRES
NUMBER OF BUILDING STORIES (ABOVE GRADE)	1
BUILDING HEIGHT	21'-10" ABOVE GRADE
TYPE OF CONSTRUCTION (NEW STRUCTURES OR ADDITIONS)	5B, FULLY SPRINKLED
TOTAL SQUARE FOOTAGE OF BUILDING	5,280 SQ FT
USE OF PROPERTY	A, B, T
GROSS SQUARE FEET OF RETAIL AREA	3,282 SQ FT
NUMBER OF BICYCLE STALLS (TOTAL SITE)	4
NUMBER OF PARKING STALLS (TOTAL SITE)	21

STALLS REQUIRED (1,300)	18
STALLS SHOWN	26
ACCESSIBLE	1
TOTAL	21

NUMBER OF TREES SHOWN SEE LANDSCAPE PLAN



634 West Main Street
Madison, WI 53703
608-257-1090
FAX 608-257-1092

REV DATE

COPYRIGHTED DRAWING
NO PART OF THIS DRAWING
SHALL BE REPRODUCED OR
TRANSMITTED IN ANY FORM
OR BY ANY MEANS, ELECTRONIC
OR MECHANICAL, INCLUDING
PHOTOCOPYING, RECORDING,
OR BY ANY INFORMATION
SYSTEM, WITHOUT PERMISSION
IN WRITING BY TK DESIGN BUILD.

PROPOSED FACILITY FOR:
**MULTI-TENANT RETAIL
BUILDING WITH DRIVE-THRU**

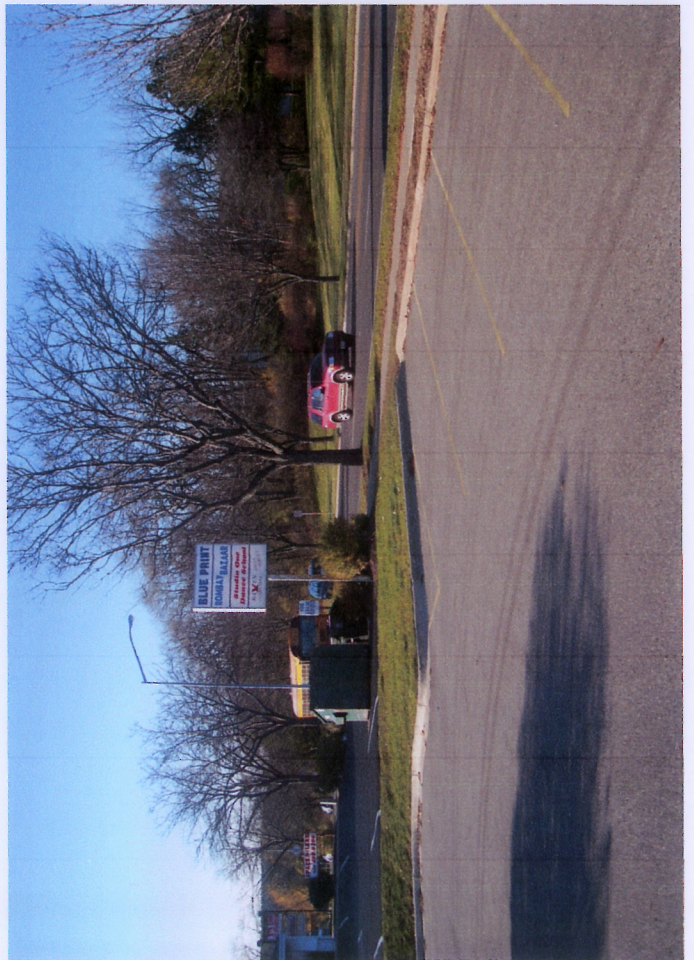
133 SOUTH GAMMON ROAD
MADISON, WISCONSIN 53711

C-11
11.8.11























SITE LOCATION MAP

733 SOUTH GAMMON ROAD

DATE: 11.16.11

