

**APPLICATION FOR
URBAN DESIGN COMMISSION
REVIEW AND APPROVAL**

AGENDA ITEM # _____
Project # _____

DATE SUBMITTED: <u>1/17/07</u>	Action Requested
UDC MEETING DATE: <u>1/24/07</u>	<input type="checkbox"/> Informational Presentation
	<input checked="" type="checkbox"/> Initial Approval and/or Recommendation
	<input type="checkbox"/> Final Approval and/or Recommendation

PROJECT ADDRESS: 454 W. Johnson Street

ALDERMANIC DISTRICT: Mike Verveer

OWNER/DEVELOPER (Partners and/or Principals) <u>Fleming Development</u>	ARCHITECT/DESIGNER/OR AGENT: <u>Gary Brink & Associates, Inc.</u>
<u>2960 Triverton Pike</u>	<u>8401 Excelsior Drive</u>
<u>Madison, WI 53711</u>	<u>Madison, WI 53717</u>

CONTACT PERSON: Gary Brink
Address: (same as above)
Phone: (608) 829-1750
Fax: (608) 829-3056
E-mail address: jjbrink@tds.net

TYPE OF PROJECT:

(See Section A for:)

- Planned Unit Development (PUD)
- General Development Plan (GDP)
- Specific Implementation Plan (SIP)
- Planned Community Development (PCD)
- General Development Plan (GDP)
- Specific Implementation Plan (SIP)
- Planned Residential Development (PRD)
- New Construction or Exterior Remodeling in an Urban Design District * (A public hearing is required as well as a fee)
- School, Public Building or Space (Fee may be required)
- New Construction or Addition to or Remodeling of a Retail, Hotel or Motel Building Exceeding 40,000 Sq. Ft.
- Planned Commercial Site

(See Section B for:)

- New Construction or Exterior Remodeling in C4 District (Fee required)

(See Section C for:)

- R.P.S.M. Parking Variance (Fee required)

(See Section D for:)

- Comprehensive Design Review* (Fee required)
- Street Graphics Variance* (Fee required)
- Other _____

*Public Hearing Required (Submission Deadline 3 Weeks in Advance of Meeting Date)

Where fees are required (as noted above) they apply with the first submittal for either initial or final approval of a project.

TOWER PARAPET 248'-1"

PARAPET 234'-1"

ROOF DECK 231'-0"

WINDOW/DOOR HEAD HEIGHT 228'-0"

5TH FLOOR WINDOW/DOOR HEAD HEIGHT 211'-0"

4TH FLOOR WINDOW/DOOR HEAD HEIGHT 208'-0"

3RD FLOOR WINDOW/DOOR HEAD HEIGHT 198'-0"

2ND FLOOR WINDOW/DOOR HEAD HEIGHT 188'-0"

1ST FLOOR WINDOW/DOOR HEAD HEIGHT 178'-0"

7TH FLOOR WINDOW/DOOR HEAD HEIGHT 178'-0"

6TH FLOOR WINDOW/DOOR HEAD HEIGHT 171'-0"

5TH FLOOR WINDOW/DOOR HEAD HEIGHT 169'-0"

4TH FLOOR WINDOW/DOOR HEAD HEIGHT 158'-0"

3RD FLOOR WINDOW/DOOR HEAD HEIGHT 151'-0"

2ND FLOOR WINDOW/DOOR HEAD HEIGHT 149'-0"

1ST FLOOR WINDOW/DOOR HEAD HEIGHT 147'-0"

CAST STONE CORNICE SMOOTH FINISH TYPICAL

CAST STONE CORNICE SMOOTH FINISH TYPICAL

CAST STONE CORNICE SMOOTH FINISH TYPICAL

CAST STONE CORNICE SMOOTH FINISH TYPICAL

CAST STONE CORNICE SMOOTH FINISH TYPICAL

CAST STONE CORNICE SMOOTH FINISH TYPICAL

CAST STONE CORNICE SMOOTH FINISH TYPICAL

CAST STONE BALUSTER SMOOTH FINISH TYPICAL

PREPARED ALUMINUM SILL AND BALUSTERS TYPICAL

CAST STONE CORNICE SMOOTH FINISH TYPICAL

ULTRIX BRICK TYPICAL

CAST STONE WINDOW HEAD SMOOTH FINISH TYPICAL

CAST STONE WINDOW HEAD SMOOTH FINISH TYPICAL

CAST STONE WINDOW HEAD SMOOTH FINISH TYPICAL

CAST STONE WINDOW HEAD SMOOTH FINISH TYPICAL

CAST STONE WINDOW HEAD SMOOTH FINISH TYPICAL

CAST STONE WINDOW HEAD SMOOTH FINISH TYPICAL

CAST STONE WINDOW HEAD SMOOTH FINISH TYPICAL

CAST STONE WINDOW HEAD SMOOTH FINISH TYPICAL

CAST STONE PANELS TYPICAL

CAST STONE WINDOW SURROUND TYPICAL

CAST STONE CORNICE SMOOTH FINISH TYPICAL

ULTRIX BRICK TYPICAL

CAST STONE WINDOW SILL SMOOTH FINISH TYPICAL

CAST STONE WINDOW HEAD SMOOTH FINISH TYPICAL

CAST STONE WINDOW HEAD SMOOTH FINISH TYPICAL

CAST STONE WINDOW HEAD SMOOTH FINISH TYPICAL

CAST STONE WINDOW HEAD SMOOTH FINISH TYPICAL

CAST STONE WINDOW HEAD SMOOTH FINISH TYPICAL

CAST STONE WINDOW HEAD SMOOTH FINISH TYPICAL

CAST STONE WINDOW HEAD SMOOTH FINISH TYPICAL

CAST STONE CORNICE SMOOTH FINISH TYPICAL

PREPARED ALUMINUM SILL AND BALUSTERS TYPICAL

CAST STONE CORNICE SMOOTH FINISH TYPICAL

ULTRIX BRICK TYPICAL

CAST STONE WINDOW SILL SMOOTH FINISH TYPICAL

CAST STONE WINDOW HEAD SMOOTH FINISH TYPICAL

CAST STONE WINDOW HEAD SMOOTH FINISH TYPICAL

CAST STONE WINDOW HEAD SMOOTH FINISH TYPICAL

CAST STONE WINDOW HEAD SMOOTH FINISH TYPICAL

CAST STONE WINDOW HEAD SMOOTH FINISH TYPICAL

CAST STONE WINDOW HEAD SMOOTH FINISH TYPICAL

CAST STONE WINDOW HEAD SMOOTH FINISH TYPICAL

CAST STONE CORNICE SMOOTH FINISH TYPICAL

PREPARED ALUMINUM SILL AND BALUSTERS TYPICAL

CAST STONE CORNICE SMOOTH FINISH TYPICAL

ULTRIX BRICK TYPICAL

CAST STONE WINDOW SILL SMOOTH FINISH TYPICAL

CAST STONE WINDOW HEAD SMOOTH FINISH TYPICAL

CAST STONE WINDOW HEAD SMOOTH FINISH TYPICAL

CAST STONE WINDOW HEAD SMOOTH FINISH TYPICAL

CAST STONE WINDOW HEAD SMOOTH FINISH TYPICAL

CAST STONE WINDOW HEAD SMOOTH FINISH TYPICAL

CAST STONE WINDOW HEAD SMOOTH FINISH TYPICAL

CAST STONE WINDOW HEAD SMOOTH FINISH TYPICAL

CAST STONE CORNICE SMOOTH FINISH TYPICAL

PREPARED ALUMINUM SILL AND BALUSTERS TYPICAL

CAST STONE CORNICE SMOOTH FINISH TYPICAL

ULTRIX BRICK TYPICAL

CAST STONE WINDOW SILL SMOOTH FINISH TYPICAL

CAST STONE WINDOW HEAD SMOOTH FINISH TYPICAL

CAST STONE WINDOW HEAD SMOOTH FINISH TYPICAL

CAST STONE WINDOW HEAD SMOOTH FINISH TYPICAL

CAST STONE WINDOW HEAD SMOOTH FINISH TYPICAL

CAST STONE WINDOW HEAD SMOOTH FINISH TYPICAL

CAST STONE WINDOW HEAD SMOOTH FINISH TYPICAL

CAST STONE WINDOW HEAD SMOOTH FINISH TYPICAL

NORTH BASSETT STREET ELEVATION (WEST)

1/8" = 1'-0"

REMOVES CAST STONE PROFILE SEE SHEET 605 FOR PROFILES

GARY BRINK & ASSOCIATES ARCHITECTS
8401 EXCELSIOR DRIVE
MADISON, WI 53717
608-829-1750
608-829-0056 (FAX)

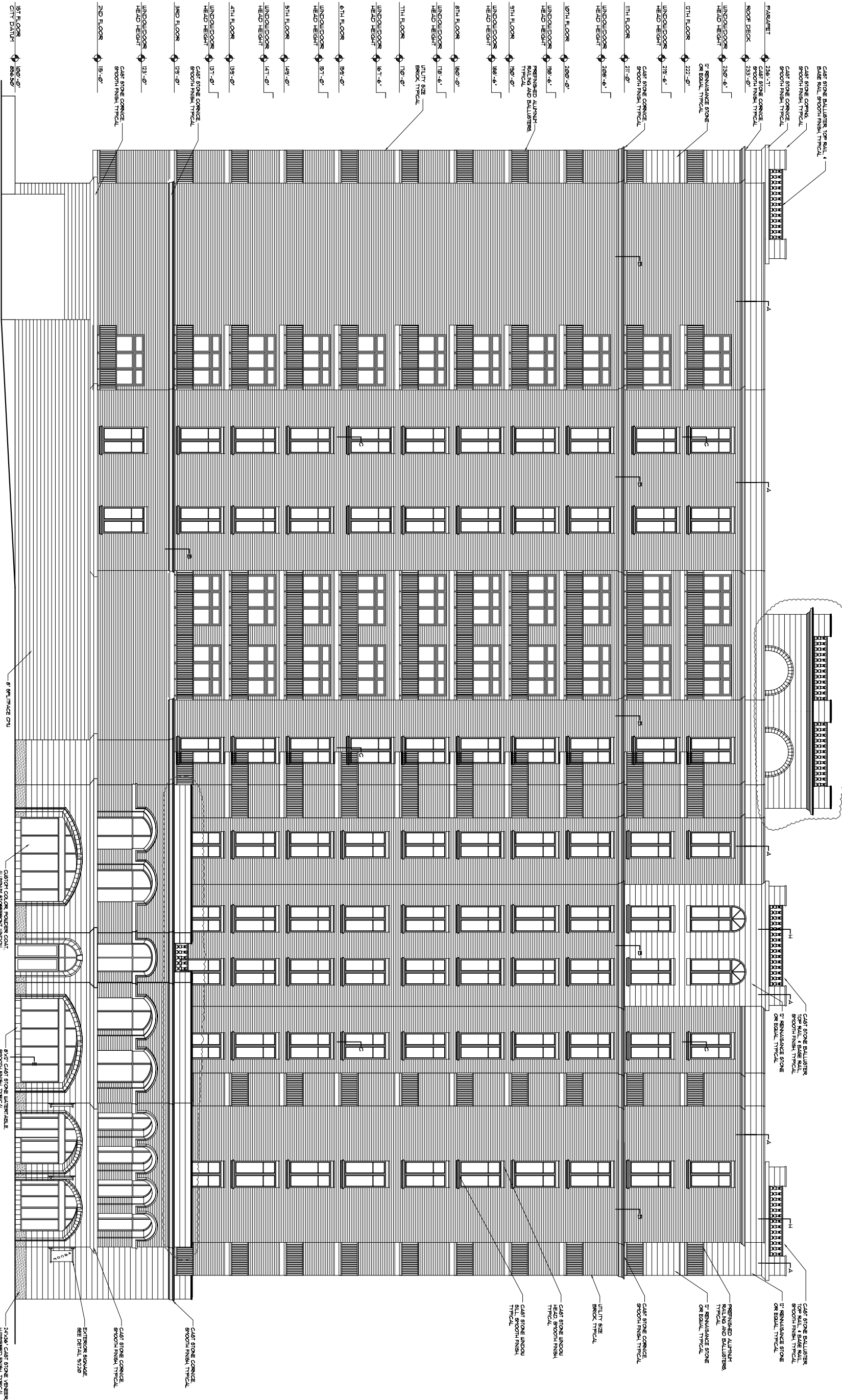


PROJECT: 454 WEST
454 WEST JOHNSON STREET MADISON, WISCONSIN
CLIENT: FLEMING DEVELOPMENT
2960 TRIVERTON PIKE ROAD MADISON, WISCONSIN 53711

©2006 GARY BRINK & ASSOC.
Any duplication, reproduction, or use by any other party is prohibited without the written permission of GARY BRINK & ASSOC.
PROJECT: 200621
CAD FILE: 601-200621
DRAWN BY: RC
DATE: 01/10/07

TOWER PARAPET 236'-1"

1/2"



NORTH ELEVATION

1/8" = 1'-0"

SHOWS CAST STONE PROFILE
SEE SHEET 6-05 FOR PROFILES

GARY BRINK & ASSOCIATES
ARCHITECTS
8401 EXCELSIOR DRIVE
MADISON, WI
608-829-1750
608-829-0056 (FAX)



PROJECT:
454 WEST
454 WEST JOHNSON STREET MADISON, WISCONSIN

CLIENT:
FLEMING DEVELOPMENT
2960 TRIVERTON PIKE ROAD MADISON, WISCONSIN 53711

©2006 GARY BRINK & ASSOC.
Any duplication, reproduction,
or use by any other party in
whole or in part without the
authorization is received from
GARY BRINK & ASSOC.

PROJECT: 200621
CAD FILE: 601-200621
DRAWN BY: RC
DATE: 01/10/07

TOWER PARAPET 246'-11"

CAST STONE CORNICE SMOOTH FINISH TYPICAL

ROOF DECK 231'-0"
WINDOW/DOOR HEAD HEIGHT 223'-0"

17TH FLOOR 221'-0"
WINDOW/DOOR HEAD HEIGHT 219'-0"
HEAD HEIGHT 213'-0"
REINFORCED ALUMINUM RAILING AND BALUSTERS TYPICAL

16TH FLOOR 211'-0"
WINDOW/DOOR HEAD HEIGHT 209'-0"
HEAD HEIGHT 203'-0"
UTILITY SIZE BRICK TYPICAL

15TH FLOOR 201'-0"
WINDOW/DOOR HEAD HEIGHT 199'-0"
HEAD HEIGHT 193'-0"
CAST STONE CORNICE SMOOTH FINISH TYPICAL

14TH FLOOR 191'-0"
WINDOW/DOOR HEAD HEIGHT 189'-0"
HEAD HEIGHT 183'-0"
UTILITY SIZE BRICK TYPICAL

13TH FLOOR 181'-0"
WINDOW/DOOR HEAD HEIGHT 179'-0"
HEAD HEIGHT 173'-0"
CAST STONE CORNICE SMOOTH FINISH TYPICAL

12TH FLOOR 171'-0"
WINDOW/DOOR HEAD HEIGHT 169'-0"
HEAD HEIGHT 163'-0"
UTILITY SIZE BRICK TYPICAL

11TH FLOOR 161'-0"
WINDOW/DOOR HEAD HEIGHT 159'-0"
HEAD HEIGHT 153'-0"
CAST STONE CORNICE SMOOTH FINISH TYPICAL

10TH FLOOR 151'-0"
WINDOW/DOOR HEAD HEIGHT 149'-0"
HEAD HEIGHT 143'-0"
REINFORCED ALUMINUM RAILING AND BALUSTERS TYPICAL

9TH FLOOR 141'-0"
WINDOW/DOOR HEAD HEIGHT 139'-0"
HEAD HEIGHT 133'-0"

8TH FLOOR 131'-0"
WINDOW/DOOR HEAD HEIGHT 129'-0"
HEAD HEIGHT 123'-0"

7TH FLOOR 119'-0"
WINDOW/DOOR HEAD HEIGHT 115'-0"

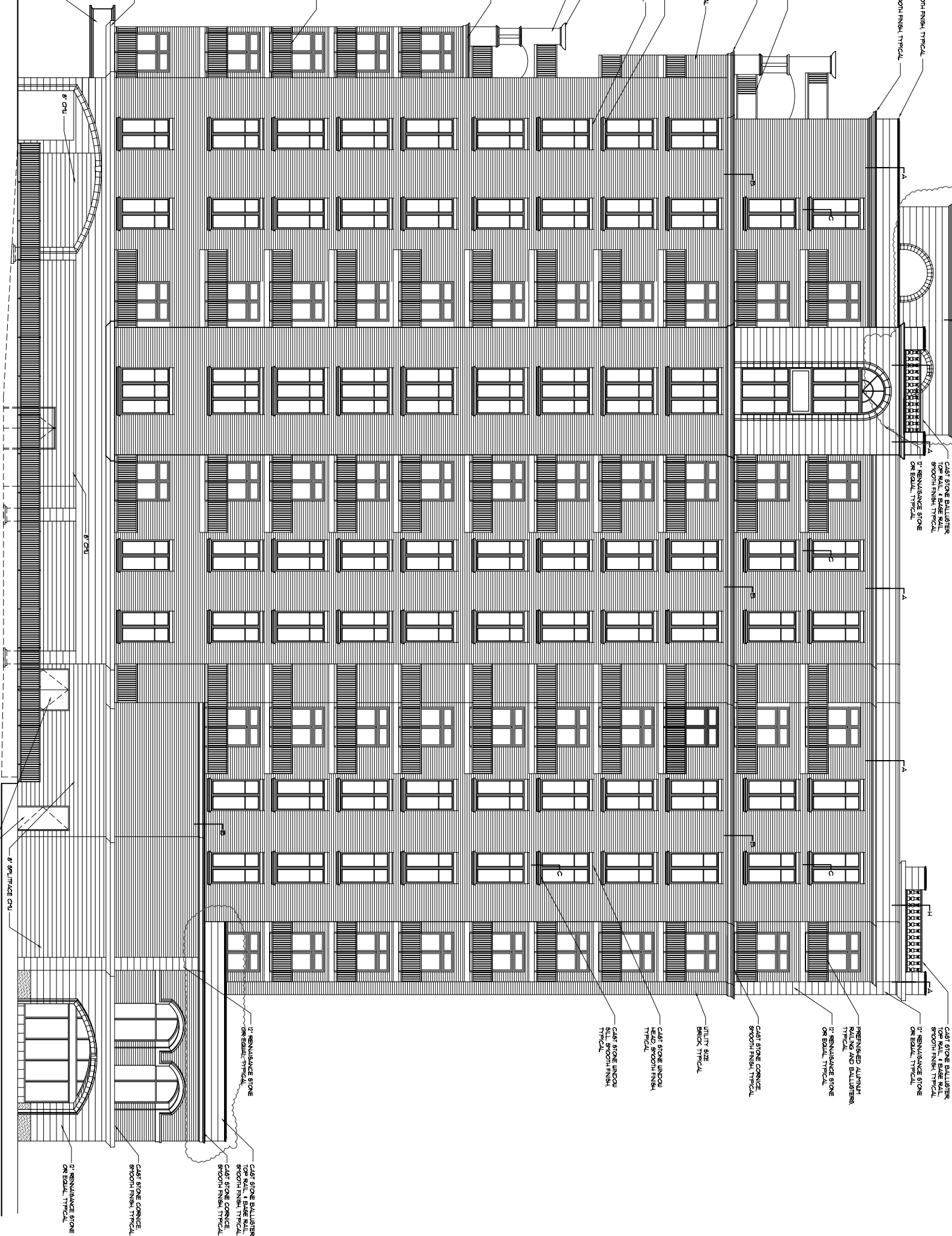
6TH FLOOR 109'-0"
WINDOW/DOOR HEAD HEIGHT 105'-0"

5TH FLOOR 99'-0"
WINDOW/DOOR HEAD HEIGHT 95'-0"

4TH FLOOR 89'-0"
WINDOW/DOOR HEAD HEIGHT 85'-0"

3RD FLOOR 79'-0"
WINDOW/DOOR HEAD HEIGHT 75'-0"

EAST ELEVATION
1/8" = 1'-0"



GARY BRINK & ASSOCIATES
ARCHITECTS

8401 EXCELSIOR DRIVE
MADISON, WI
608-829-1750
608-829-3056 (FAX)

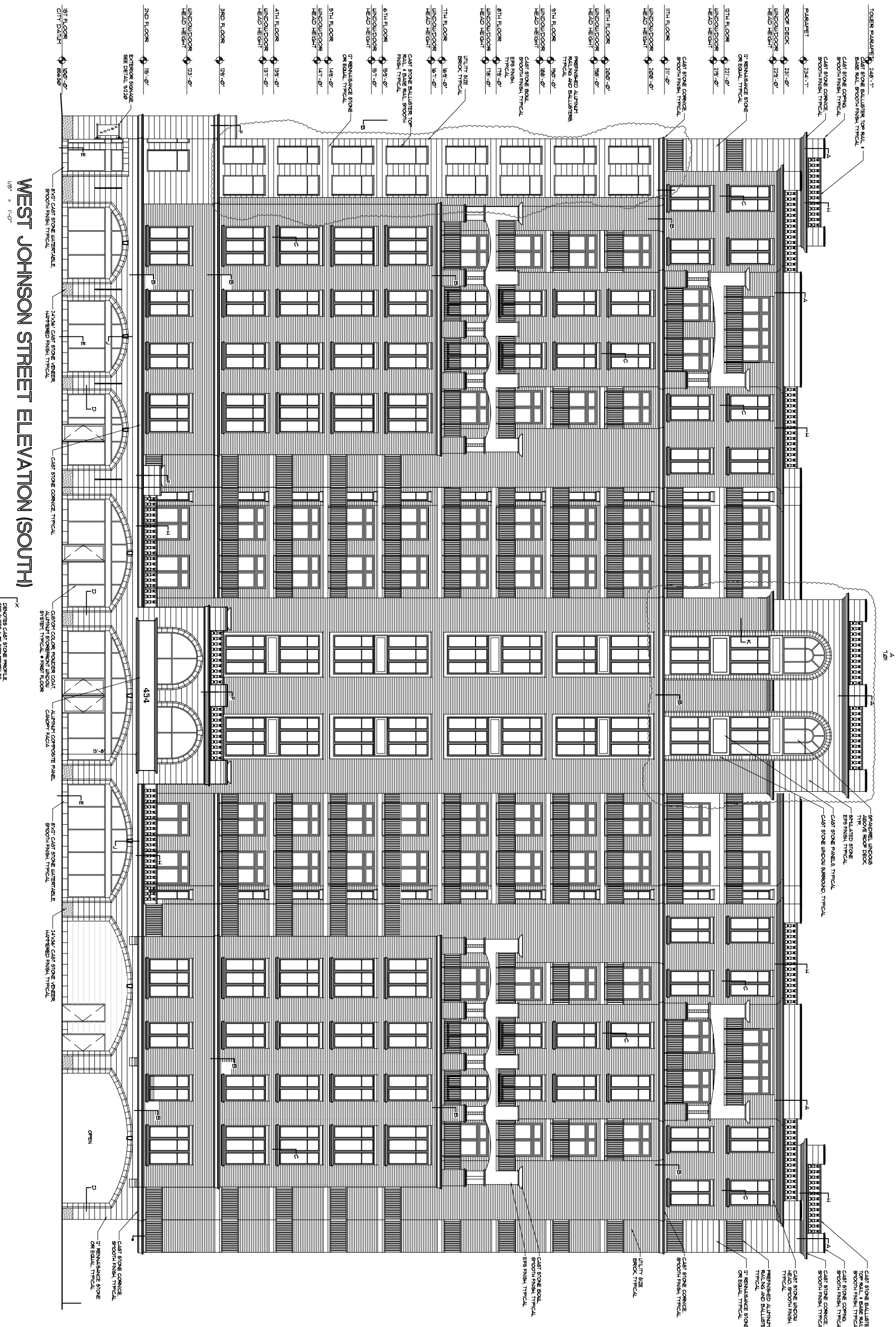


PROJECT:
454 WEST
454 WEST JOHNSON STREET MADISON, WISCONSIN

CLIENT:
FLEMING DEVELOPMENT
2960 TRIVERTON PIKE ROAD MADISON, WISCONSIN 53711

©2006 GARY BRINK & ASSOC.
Any duplication, reproduction,
or use by any other party in
whole or in part without the
authorization is reserved from
GARY BRINK & ASSOC.

PROJECT: 200621
CAD FILE: 601-200621
DRAWN BY: RC
DATE: 01/10/07



WEST JOHNSON STREET ELEVATION (SOUTH)

1/8" = 1'-0"

SHOWS CAST STONE PROFILE
SEE SHEET 6.05 FOR PROFILES

GARY BRINK & ASSOCIATES
ARCHITECTS
8401 EXCELSIOR DRIVE
MADISON, WI
608-829-1750
608-829-0056 (FAX)

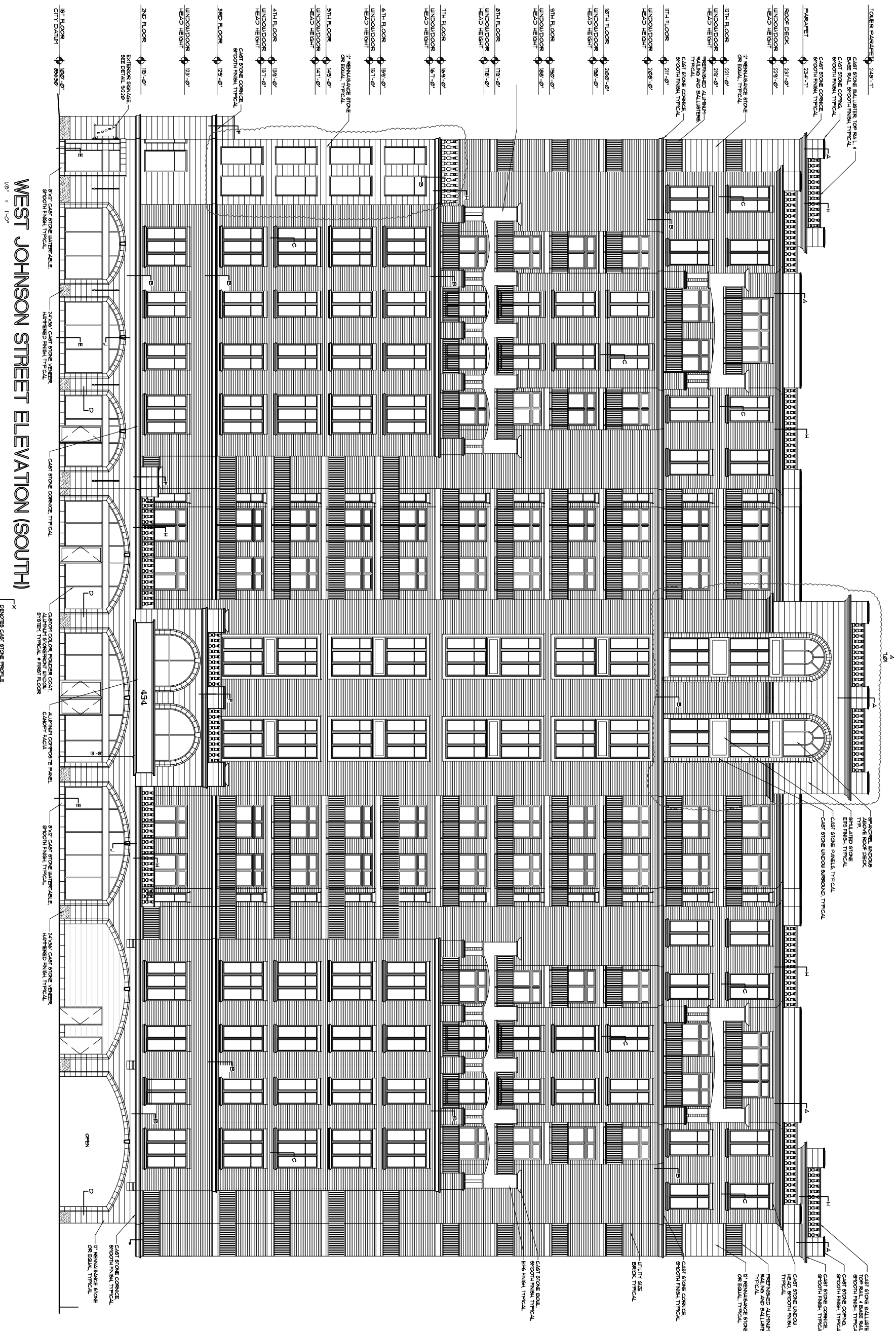


PROJECT:
454 WEST
454 WEST JOHNSON STREET MADISON, WISCONSIN

CLIENT:
FLEMING DEVELOPMENT
2960 TRIVERTON PIKE ROAD MADISON, WISCONSIN 53711

© 2006 GARY BRINK & ASSOC.
Any duplication, reproduction,
or use by any other party is
without the express written
authorization is reserved from
GARY BRINK & ASSOC.

PROJECT: 200621
CAD FILE: 601-200621
DRAWN BY: RC
DATE: 01/10/07



WEST JOHNSON STREET ELEVATION (SOUTH)

1/8" = 1'-0"

SHOWS CAST STONE PROFILE
SEE SHEET 6.05 FOR PROFILES

- TOILER PARAPET 248'-1"
- CAST STONE BALUSTRADE TOP RAIL, BALUSTRADE BALL, SMOOTH FINISH TYPICAL
- CAST STONE CORNICHE SMOOTH FINISH TYPICAL
- PARAPET 234'-1"
- ROOF DECK 231'-0"
- WINDOW DOOR HEAD HEIGHT 229'-0"
- 21ST FLOOR WINDOW DOOR HEAD HEIGHT 221'-0"
- 21ST FLOOR WINDOW DOOR HEAD HEIGHT 219'-0"
- 20TH FLOOR WINDOW DOOR HEAD HEIGHT 209'-0"
- 19TH FLOOR WINDOW DOOR HEAD HEIGHT 199'-0"
- 18TH FLOOR WINDOW DOOR HEAD HEIGHT 189'-0"
- 17TH FLOOR WINDOW DOOR HEAD HEIGHT 179'-0"
- 16TH FLOOR WINDOW DOOR HEAD HEIGHT 169'-0"
- 15TH FLOOR WINDOW DOOR HEAD HEIGHT 161'-0"
- 14TH FLOOR WINDOW DOOR HEAD HEIGHT 148'-0"
- 13TH FLOOR WINDOW DOOR HEAD HEIGHT 137'-0"
- 3RD FLOOR WINDOW DOOR HEAD HEIGHT 129'-0"
- 2ND FLOOR WINDOW DOOR HEAD HEIGHT 119'-0"
- 1ST FLOOR WINDOW DOOR HEAD HEIGHT 109'-0"
- CITY DATUM 88'-0"

- 21ST FLOOR WINDOW DOOR HEAD HEIGHT 221'-0"
- 21ST FLOOR WINDOW DOOR HEAD HEIGHT 219'-0"
- 20TH FLOOR WINDOW DOOR HEAD HEIGHT 209'-0"
- 19TH FLOOR WINDOW DOOR HEAD HEIGHT 199'-0"
- 18TH FLOOR WINDOW DOOR HEAD HEIGHT 189'-0"
- 17TH FLOOR WINDOW DOOR HEAD HEIGHT 179'-0"
- 16TH FLOOR WINDOW DOOR HEAD HEIGHT 169'-0"
- 15TH FLOOR WINDOW DOOR HEAD HEIGHT 161'-0"
- 14TH FLOOR WINDOW DOOR HEAD HEIGHT 148'-0"
- 13TH FLOOR WINDOW DOOR HEAD HEIGHT 137'-0"
- 3RD FLOOR WINDOW DOOR HEAD HEIGHT 129'-0"
- 2ND FLOOR WINDOW DOOR HEAD HEIGHT 119'-0"
- 1ST FLOOR WINDOW DOOR HEAD HEIGHT 109'-0"
- CITY DATUM 88'-0"

© 2006 GARY BRINK & ASSOC.
Any duplication, reproduction, or use by any other party is prohibited without the written permission of GARY BRINK & ASSOC.
PROJECT: 200621
CAD FILE: 601-200621
DRAWN BY: RC
DATE: 01/10/07

PROJECT: **454 WEST**
454 WEST JOHNSON STREET MADISON, WISCONSIN
CLIENT: **FLEMING DEVELOPMENT**
2960 TRIVERTON PIKE ROAD MADISON, WISCONSIN 53711

GARY BRINK & ASSOCIATES
ARCHITECTS
8401 EXCELSIOR DRIVE
MADISON, WI
608-829-1750
608-829-0056 (FAX)



TOWER PARAPET 248'-1"

PARAPET 234'-1"

ROOF DECK 231'-0"

WINDOW DOOR 228'-0"

WINDOW DOOR 219'-0"

WINDOW DOOR 211'-0"

WINDOW DOOR 208'-0"

WINDOW DOOR 200'-0"

WINDOW DOOR 198'-0"

WINDOW DOOR 190'-0"

WINDOW DOOR 188'-0"

WINDOW DOOR 179'-0"

WINDOW DOOR 178'-0"

WINDOW DOOR 163'-0"

WINDOW DOOR 161'-0"

WINDOW DOOR 149'-0"

WINDOW DOOR 147'-0"

WINDOW DOOR 138'-0"

WINDOW DOOR 137'-0"

WINDOW DOOR 129'-0"

WINDOW DOOR 123'-0"

WINDOW DOOR 119'-0"

WINDOW DOOR 118'-0"

WINDOW DOOR 109'-0"

WINDOW DOOR 108'-0"

WINDOW DOOR 99'-0"

WINDOW DOOR 98'-0"

WINDOW DOOR 89'-0"

WINDOW DOOR 88'-0"

WINDOW DOOR 79'-0"

WINDOW DOOR 78'-0"

WINDOW DOOR 69'-0"

WINDOW DOOR 68'-0"

CAST STONE BALUSTERS
SMOOTH FINISH TYPICAL
OR EQUAL TYPICAL

PREPARED ALUMINUM
SCREENS AND BALUSTERS
TYPICAL
OR EQUAL TYPICAL

CAST STONE CORNICE
SMOOTH FINISH TYPICAL

ULTRAZ
BRICK TYPICAL

CAST STONE WINDOW
HEAD SMOOTH FINISH
TYPICAL

CAST STONE WINDOW
HEAD SMOOTH FINISH
TYPICAL

CAST STONE WINDOW
HEAD SMOOTH FINISH
TYPICAL

CAST STONE WINDOW
HEAD SMOOTH FINISH
TYPICAL

CAST STONE WINDOW
HEAD SMOOTH FINISH
TYPICAL

CAST STONE WINDOW
HEAD SMOOTH FINISH
TYPICAL

CAST STONE WINDOW
HEAD SMOOTH FINISH
TYPICAL

CAST STONE WINDOW
HEAD SMOOTH FINISH
TYPICAL

CAST STONE WINDOW
HEAD SMOOTH FINISH
TYPICAL

CAST STONE PANELS
TYPICAL

CAST STONE WINDOW
SURROUND TYPICAL

CAST STONE CORNICE
SMOOTH FINISH TYPICAL

ULTRAZ
BRICK TYPICAL

CAST STONE WINDOW
HEAD SMOOTH FINISH
TYPICAL

CAST STONE WINDOW
HEAD SMOOTH FINISH
TYPICAL

CAST STONE WINDOW
HEAD SMOOTH FINISH
TYPICAL

CAST STONE WINDOW
HEAD SMOOTH FINISH
TYPICAL

CAST STONE WINDOW
HEAD SMOOTH FINISH
TYPICAL

CAST STONE WINDOW
HEAD SMOOTH FINISH
TYPICAL

CAST STONE WINDOW
HEAD SMOOTH FINISH
TYPICAL

CAST STONE WINDOW
HEAD SMOOTH FINISH
TYPICAL

CAST STONE WINDOW
HEAD SMOOTH FINISH
TYPICAL

CAST STONE CORNICE
SMOOTH FINISH TYPICAL

PREPARED ALUMINUM
SCREENS AND BALUSTERS
TYPICAL
OR EQUAL TYPICAL

CAST STONE CORNICE
SMOOTH FINISH TYPICAL

ULTRAZ
BRICK TYPICAL

CAST STONE WINDOW
HEAD SMOOTH FINISH
TYPICAL

CAST STONE WINDOW
HEAD SMOOTH FINISH
TYPICAL

CAST STONE WINDOW
HEAD SMOOTH FINISH
TYPICAL

CAST STONE WINDOW
HEAD SMOOTH FINISH
TYPICAL

CAST STONE WINDOW
HEAD SMOOTH FINISH
TYPICAL

CAST STONE WINDOW
HEAD SMOOTH FINISH
TYPICAL

CAST STONE WINDOW
HEAD SMOOTH FINISH
TYPICAL

CAST STONE WINDOW
HEAD SMOOTH FINISH
TYPICAL

CAST STONE WINDOW
HEAD SMOOTH FINISH
TYPICAL

NORTH BASSETT STREET ELEVATION (WEST)

1/8" = 1'-0"

REMOVES CAST STONE PROFILE
SEE SHEET 605 FOR PROFILES

GARY BRINK & ASSOCIATES
ARCHITECTS
8401 EXCELSIOR DRIVE
MADISON, WI 53717
608-829-1750
608-829-0056 (FAX)



PROJECT:
454 WEST
454 WEST JOHNSON STREET MADISON, WISCONSIN

CLIENT:
FLEMING DEVELOPMENT
2960 TRIVERTON PIKE ROAD MADISON, WISCONSIN 53711

©2006 GARY BRINK & ASSOC.
Any duplication, reproduction,
or use by any other party in
whole or in part without the
written permission of
GARY BRINK & ASSOC.
PROJECT: 200621
CAD FILE: 601-200621
DRAWN BY: RC
DATE: 01/10/07