





145 IOTA COURT





619 N HENRY



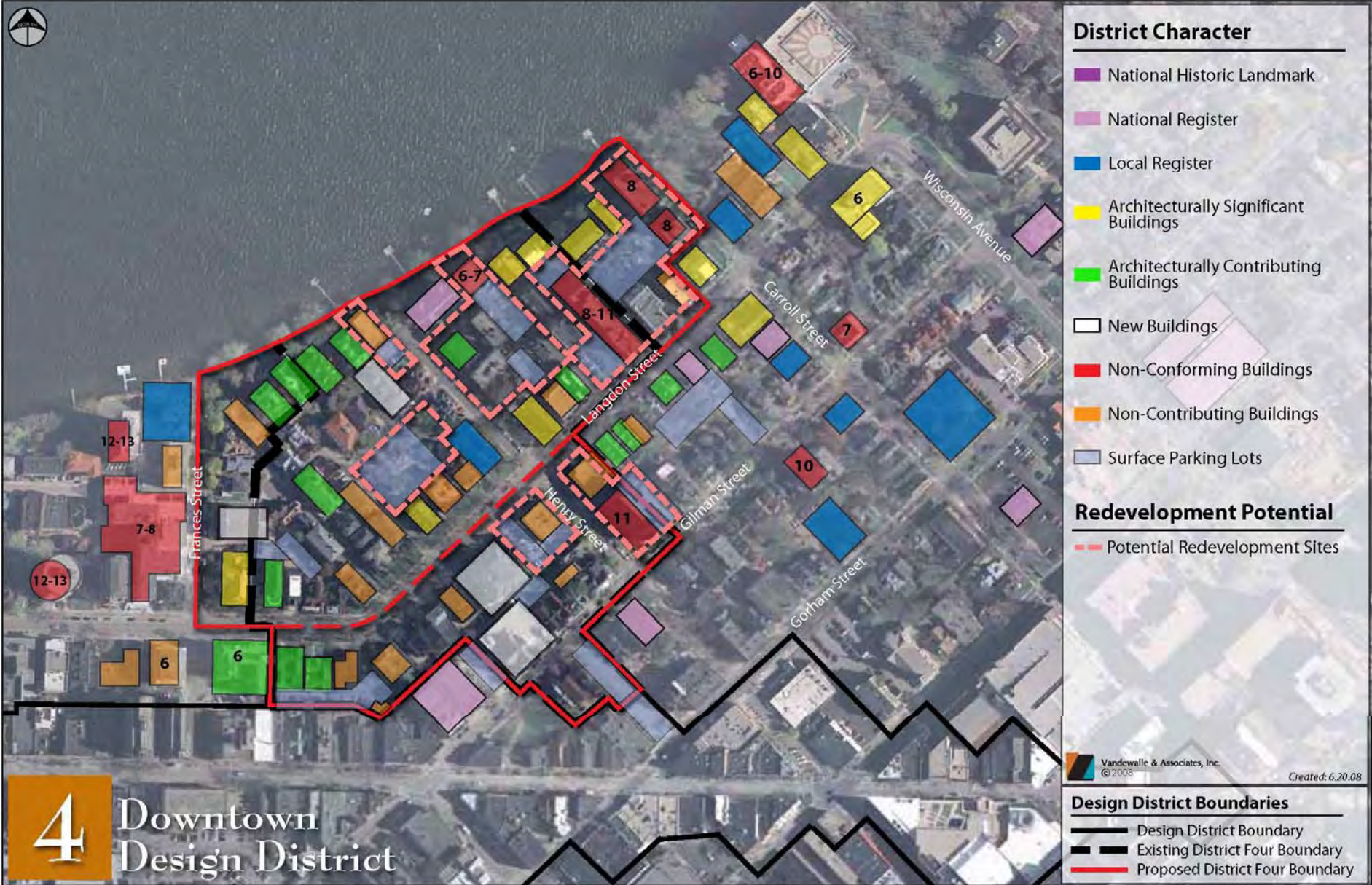
IOTA COURT PROJECT
EXISTING CONDITIONS
MADISON, WISCONSIN





IOTA COURT PROJECT
EXISTING CONDITIONS
 MADISON, WISCONSIN





District Character

- National Historic Landmark
- National Register
- Local Register
- Architecturally Significant Buildings
- Architecturally Contributing Buildings
- New Buildings
- Non-Conforming Buildings
- Non-Contributing Buildings
- Surface Parking Lots

Redevelopment Potential

- Potential Redevelopment Sites

Vandewalle & Associates, Inc.
© 2008 Created: 6.20.08

Design District Boundaries

- Design District Boundary
- Existing District Four Boundary
- Proposed District Four Boundary

4 Downtown Design District



- New Combining Units
- Existing Building
- Project Site Boundary
- Bound Height Area

WATERFRONT
 Waterfront Apartments
 Figure Ground Site Plan

January 14, 2015
 2001

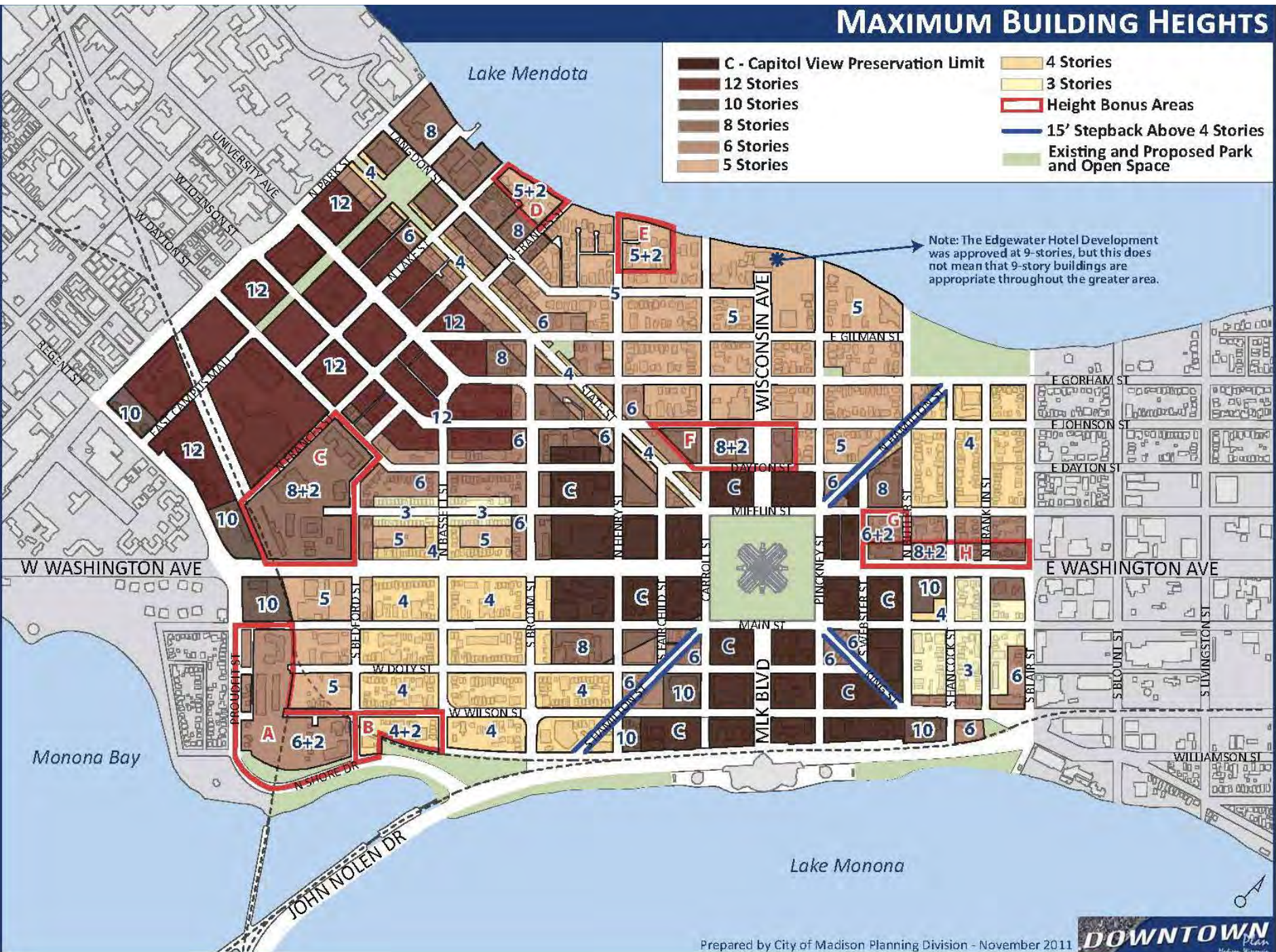


IOTA COURT PROJECT
CONCEPT SKETCH
MADISON, WISCONSIN



MAXIMUM BUILDING HEIGHTS

- C - Capitol View Preservation Limit
- 12 Stories
- 10 Stories
- 8 Stories
- 6 Stories
- 5 Stories
- 4 Stories
- 3 Stories
- Height Bonus Areas
- 15' Stepback Above 4 Stories
- Existing and Proposed Park and Open Space

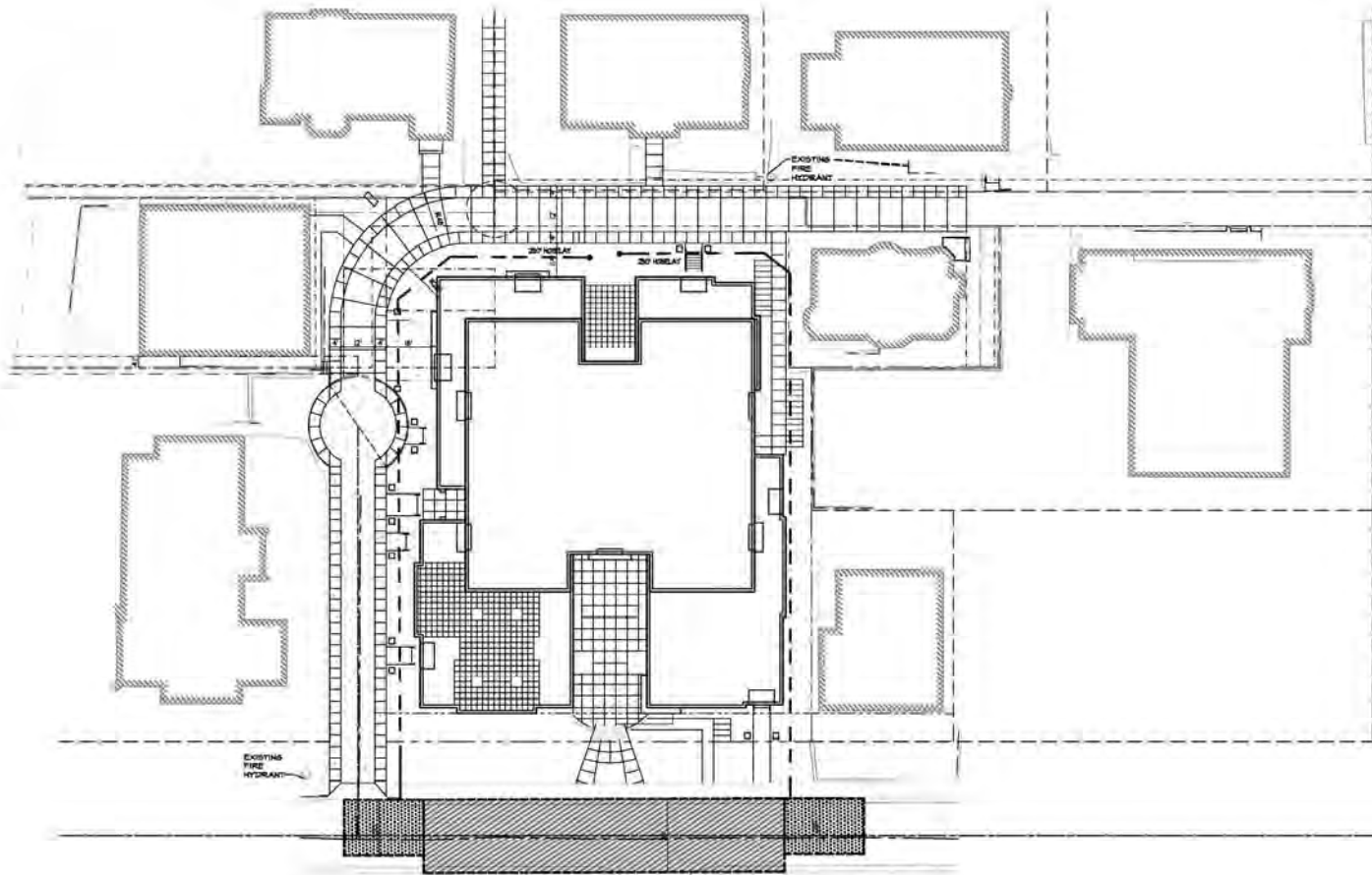




Why 5 +2

- 1.) Maintain the character on the Lake and Langdon
- 2.) Avoid blocking key views
- 3.) Place mass centralized in the larger deep blocks
- 4.) Utilize grade transitions to incorporate density





KNOTHE & BRUCE ARCHITECTS

7601 University Avenue Suite 201
 Middleton, Wisconsin 53562
 608-836-3490 Fax 836-4934

Consult:

- Notes
- 1. Hatched area = 24" HDG AERIAL APPROXIMATE FIRE LANE PARALLEL TO ONE EXTREME SIDE OF A BUILDING.
 - 2. Dotted area = 30" TO 36" HDG FIRE LANE. (SEE PLAN FOR ACTUAL WIDTH)
 - 3. VARIOUS LINE TYPES REPRESENT 20' FIRE LANES.

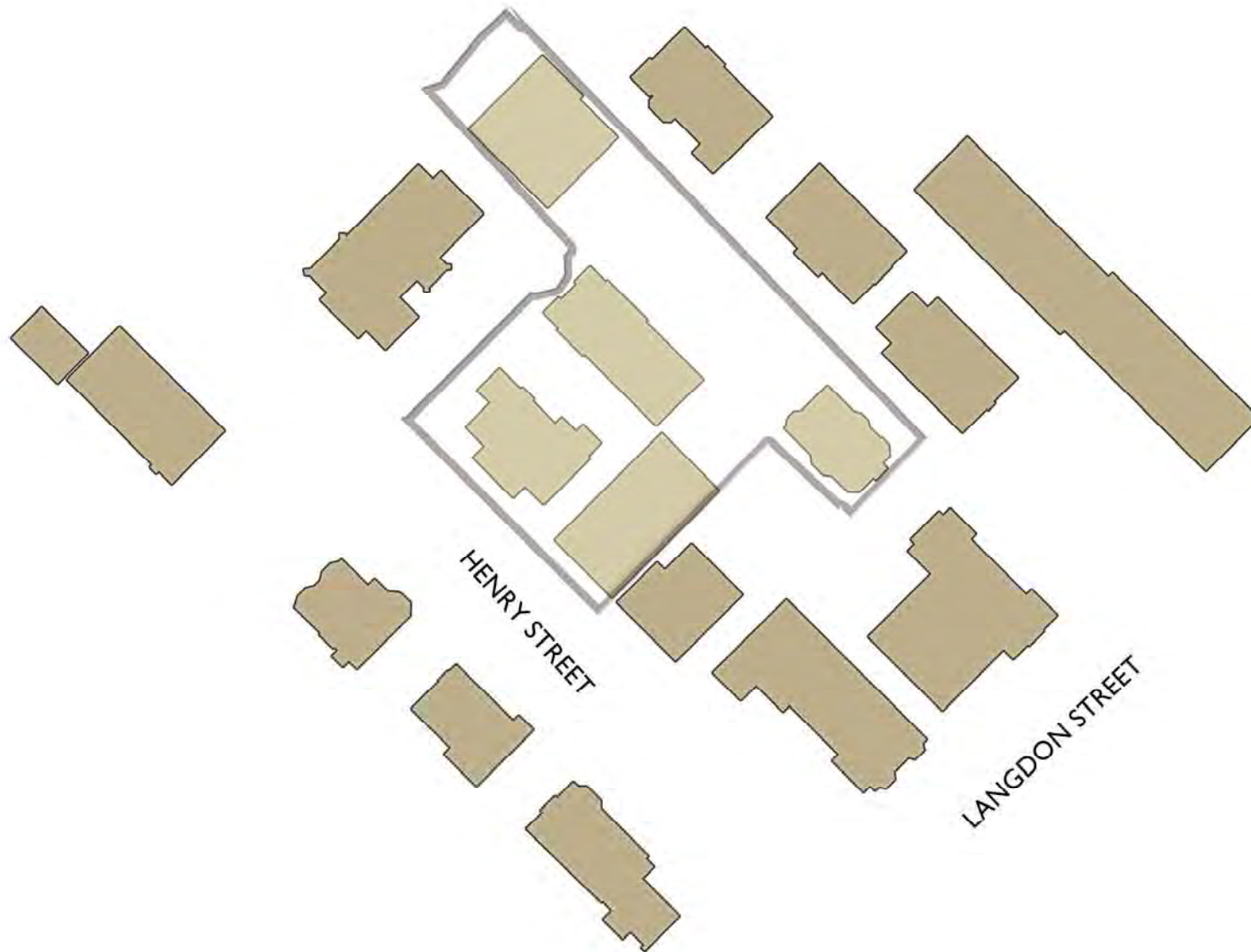
Revisions
 Last Use Approval - October 17, 2002
 Revised Land Use Drawing - January 24, 2003

FIRE ACCESS PLAN



Project Title
Houden - Iota Court

625 N. Henry St.
 Drawing Title
Fire Access Plan

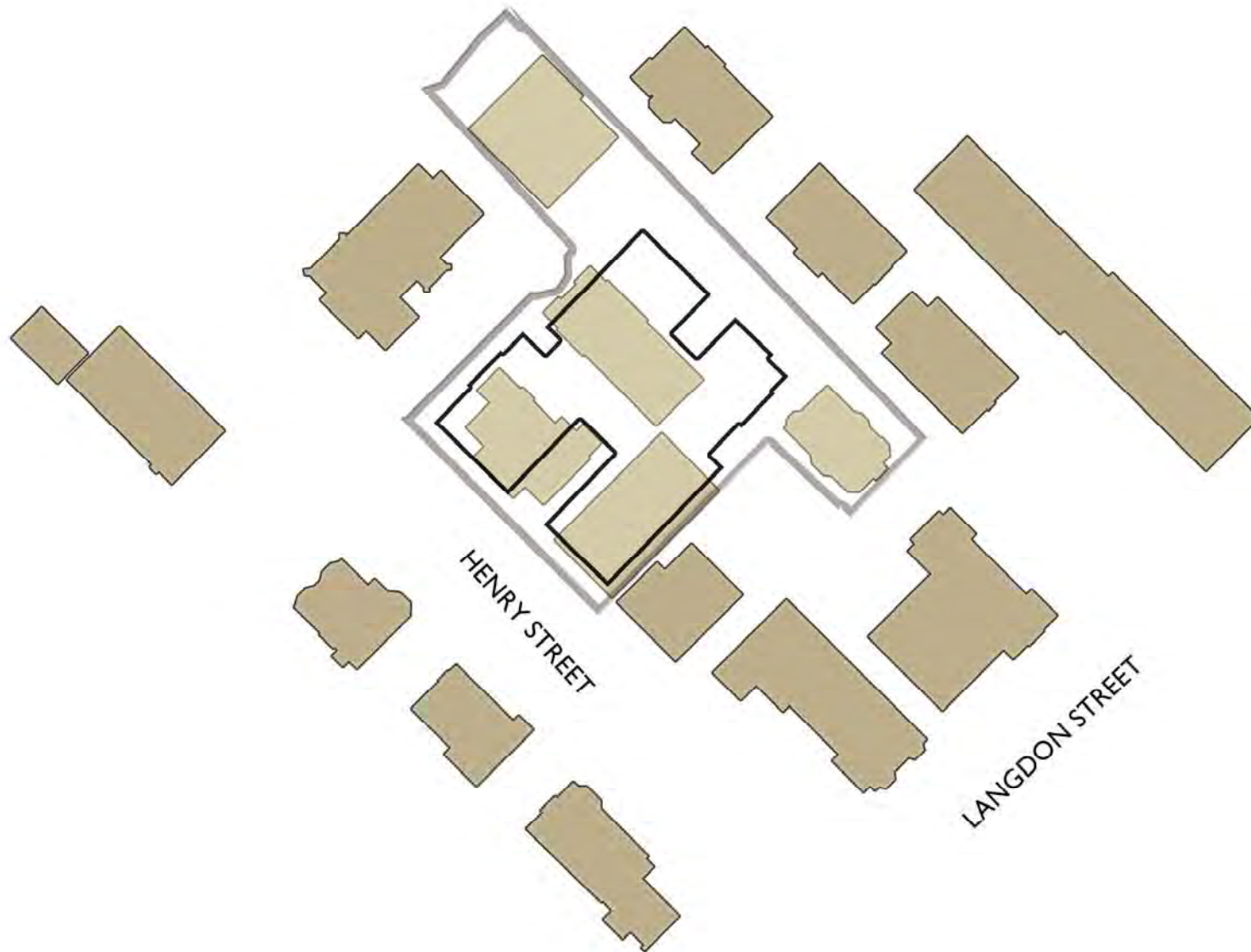


WATERFRONT

Site Plan

February 4, 2013
#0804

KNOTHE
BRUCE
& architects



WATERFRONT

Site Plan

February 4, 2013
#0804

KNOTHE
BRUCE
& architects

