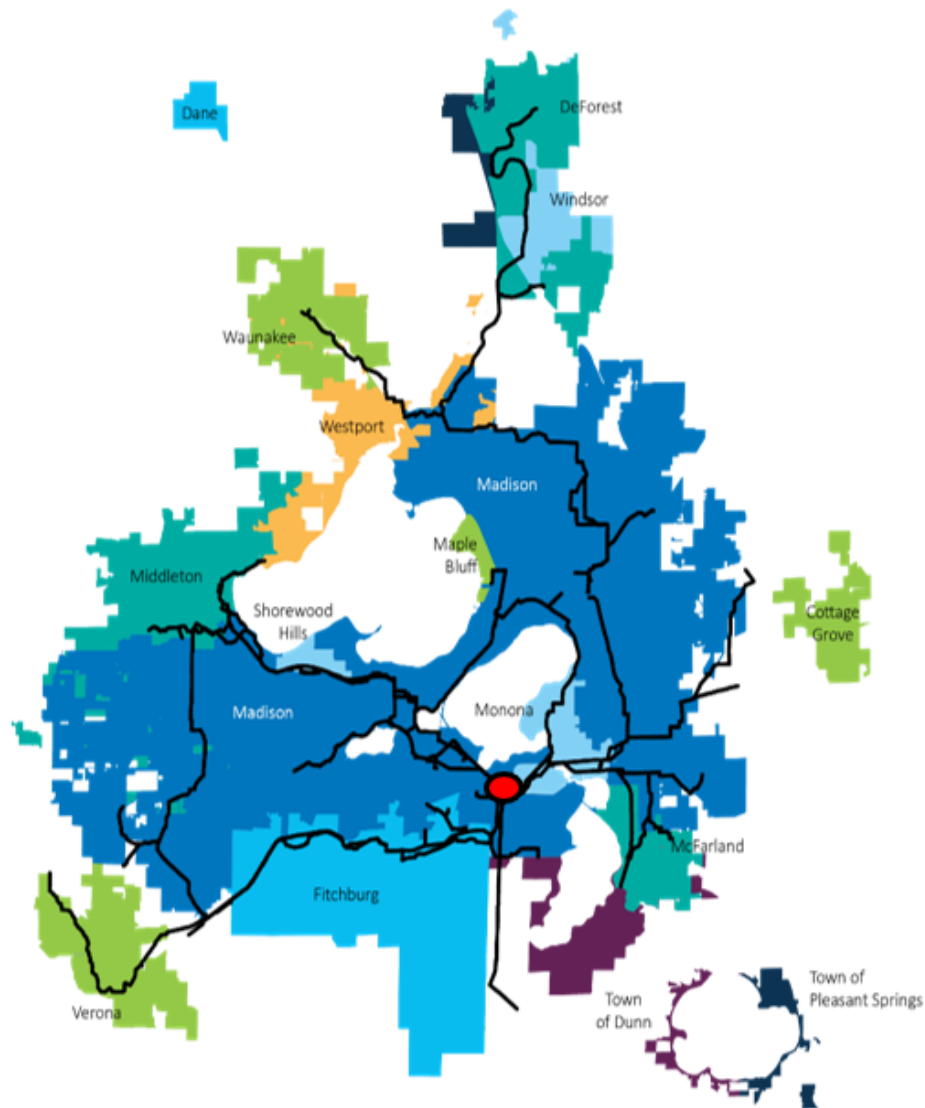


Serving the Greater Madison Area Since 1930



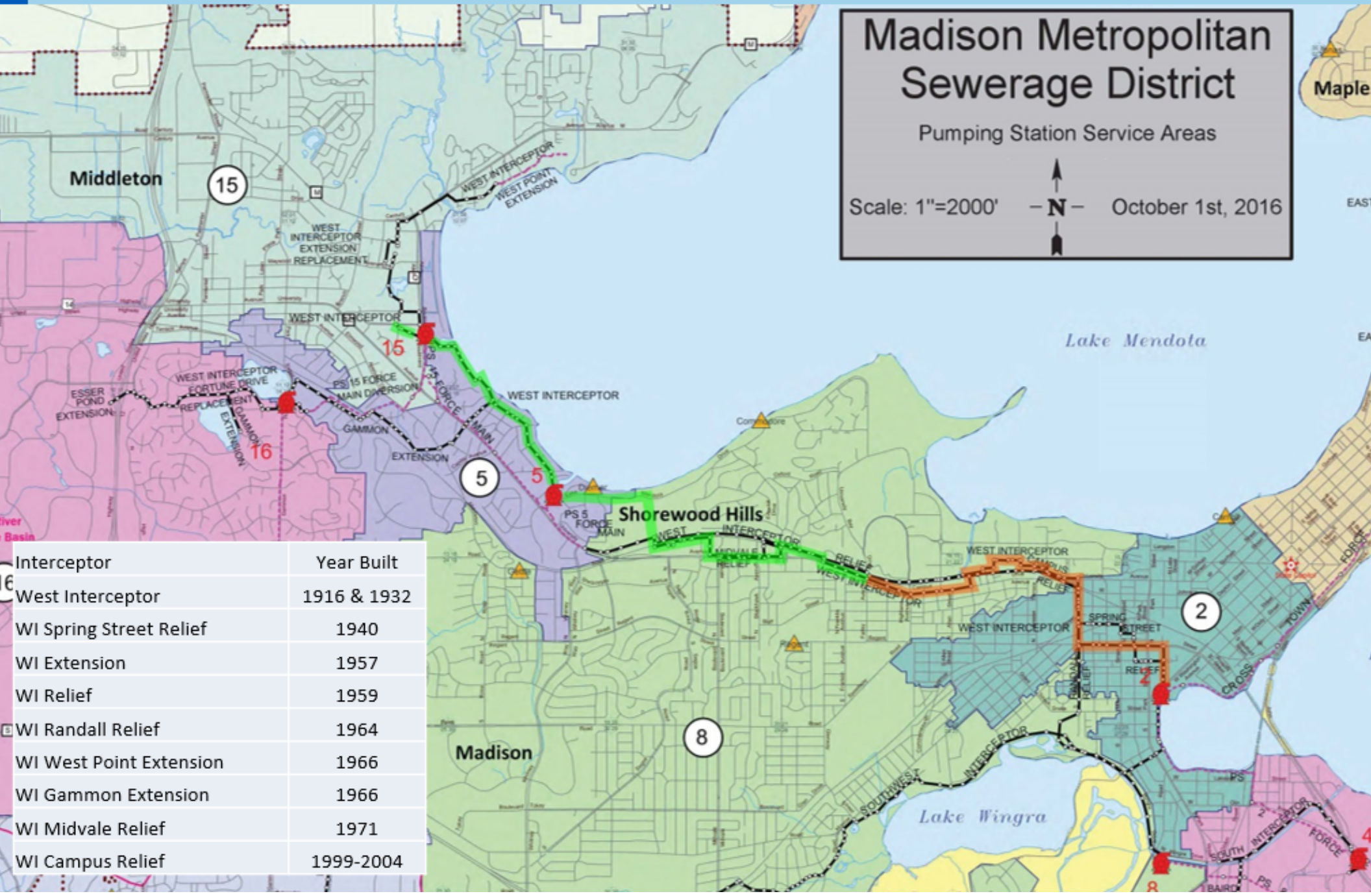
Our Service Area

- 25 owner communities in Dane County
- Over 424,000 individuals and businesses
- Covering 188 square miles
- Treat 37 million gallons daily

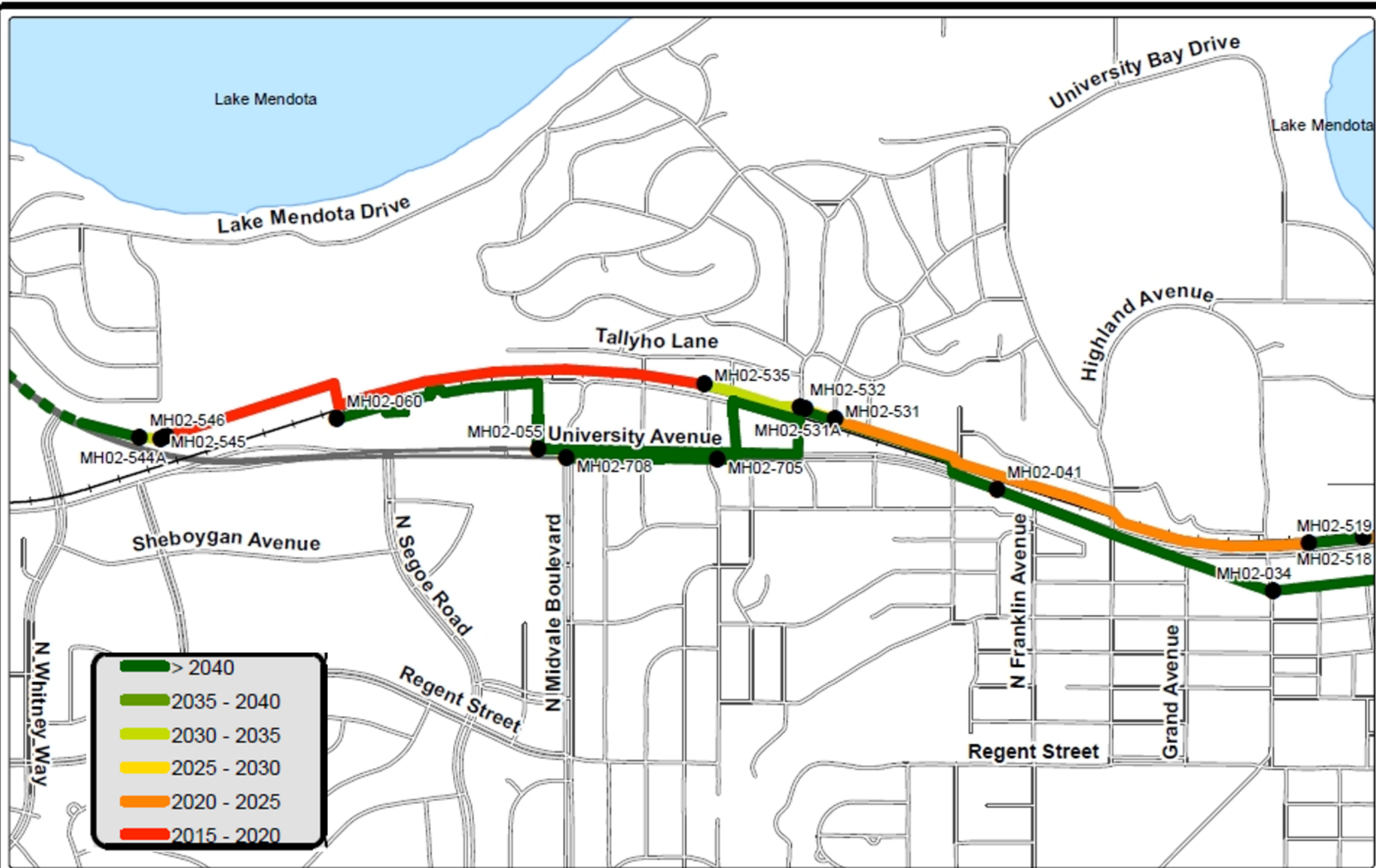
Madison Metropolitan Sewerage District



West Interceptor System



Capacity Needs Drive the Project



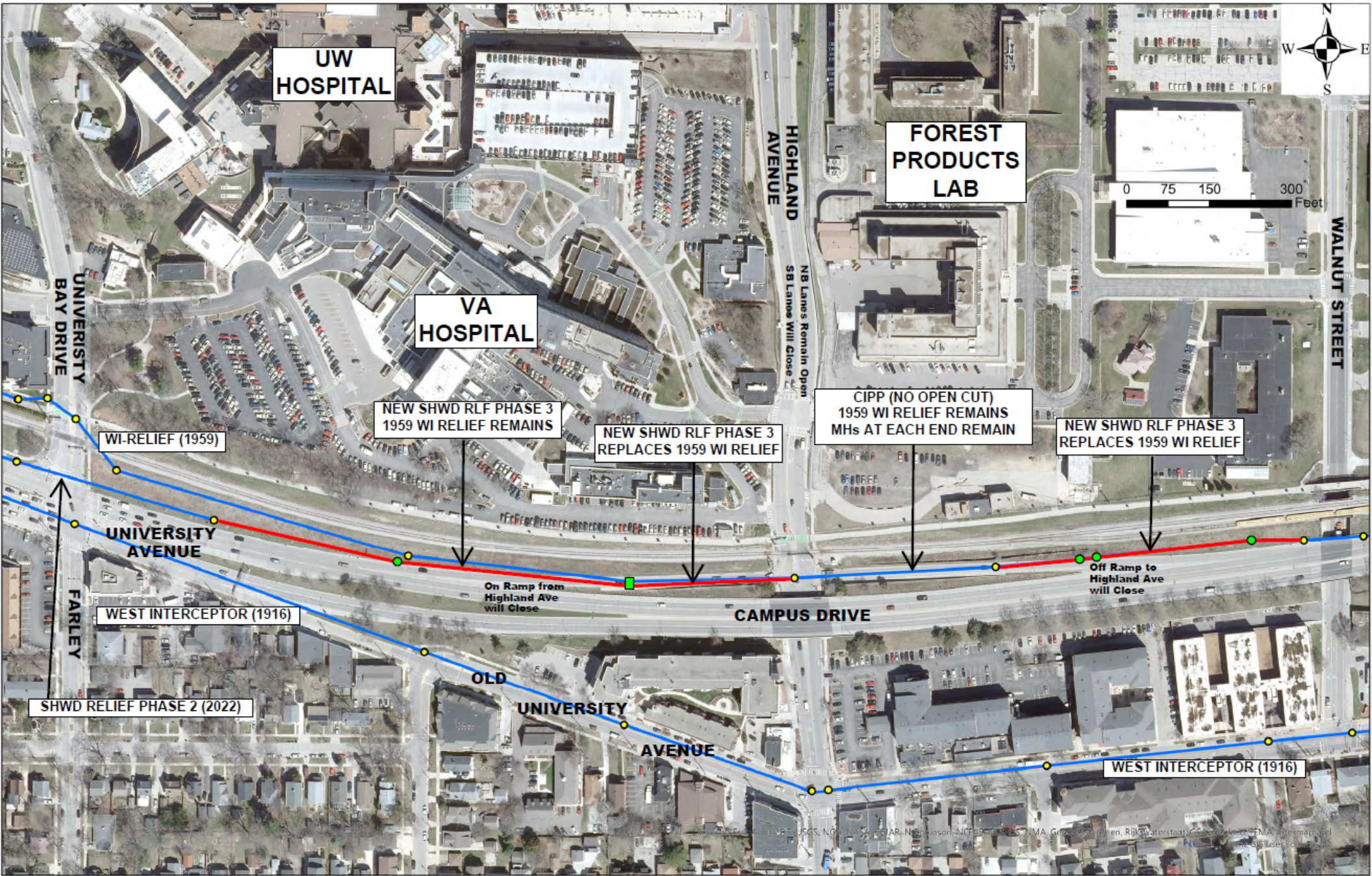


PROJECT AREA

Madison Metropolitan Sewerage District

West Interceptor Shorewood Relief Phase 3 - Highland Section





TRAFFIC CONTROL STAGE 1A - OFF-RAMP CLOSED

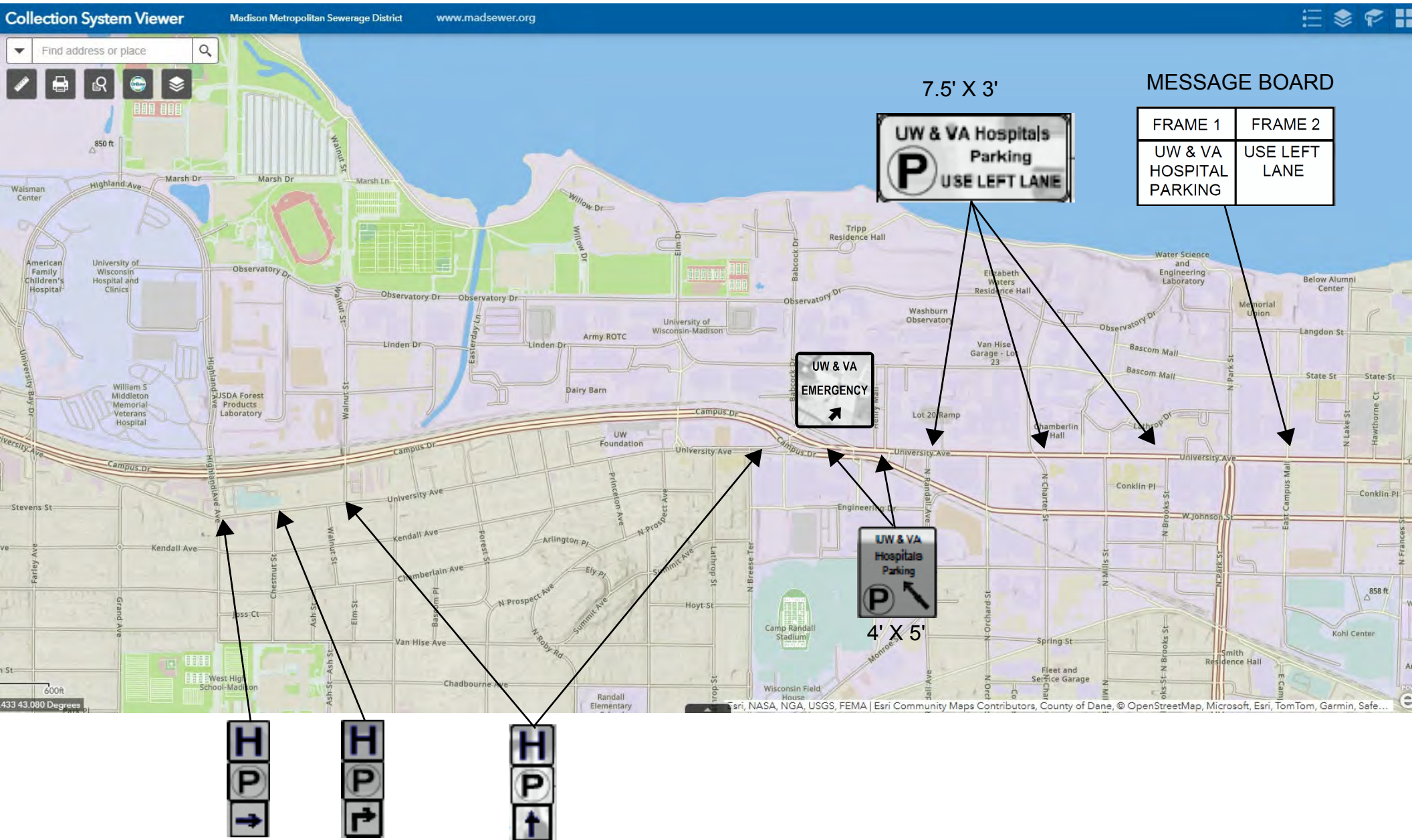
- One Lane of Campus Drive needed for Placement of ByPass Pipe



Starting May 12 - up to two weeks depending on time restrictions in Campus Drive
Stage 1A + 1B Total is up to 47 days - Approximately May 12 to June 29

SIGNAGE ALONG UNIVERSITY AVENUE

Directing non-emergency traffic to old University Avenue while the Campus Drive off-ramp to Highland is closed.



TRAFFIC CONTROL STAGE 1 ON-RAMP CLOSED:
BYPASSING PIPE NEEDS TO BE PLACED ACROSS ON-RAMP
ONE-DAY ONLY



**POSSIBLE
BUS DETOUR WHILE
ON-RAMP IS CLOSED**

1 Saturday - Planned for May 17, 2025

TRAFFIC CONTROL STAGE 1B - OFF-RAMP CLOSED



Up to 33 days. After Stage 1A
Approximately May 27 to June 29, 2025

TRAFFIC CONTROL STAGE 2 - OFF-RAMP CLOSED
SB HIGHLAND CLOSED
ON-RAMP CLOSED



**POSSIBLE
BUS DETOUR WHILE
ON-RAMP IS CLOSED**

Up to 28 days. Approximately June 29 to July 27, 2025

TRAFFIC CONTROL STAGE 3 - ON-RAMP CLOSED



**POSSIBLE
BUS DETOUR WHILE
ON-RAMP IS CLOSED**

Up to 42 days. Approximately July 27 to Sept 6, 2025

Note: Hope to finish earlier - possibly by August 19, 2025