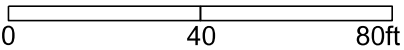


Community Gardens Lease - Elvehjem Park

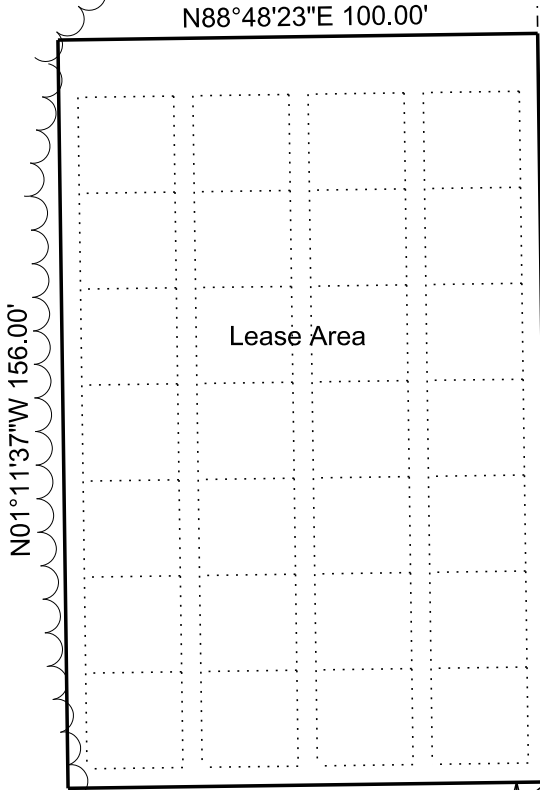
Part of Lot 11, Block 5, Black Addition to Painted Post Estates,
in the City of Madison, Dane County, WI
Park Address 1202 Painted Post Dr.
Bearings referenced to plat of Black Addition to Painted Post Estates
Prepared May 3, 2012 by City of Madison, WI Parks Div



Elvehjem Park
City of Madison Public Park

Lot 20, Block 4
Park Addition
to Acewood

Lot 11 Block 5
Black Addition to
Painted Post Estates



Utility easement to WI Tel Co. recorded Feb 14 1984 Doc 1820385
concrete sidewalk
15'

PAINTED POST DR (60')

S88°48'23"W
15.00'

S88°48'23"W 100.00'

Point of Beginning

~50'

approximate
tree dripline

asphalt drive

asphalt road

N01°11'37\"/>

20'

Lot 6 Block 1
Gray Addition to
Painted Post Estates (1210 Painted Post Dr)

SE corner
Lot 11