

EXHIBIT B

CERTIFIED SURVEY MAP No. 13735

ALL OF LOTS 4-7, BLOCK 1, CLYDE A. GALLAGHER'S SHERMAN AVE. SUBDIVISION, AS RECORDED IN VOLUME 6 OF PLATS, ON PAGE 51, AS DOCUMENT NUMBER 497381, DANE COUNTY REGISTRY, LOCATED IN THE NORTHWEST QUARTER OF THE NORTHWEST QUARTER OF SECTION 31, TOWNSHIP 08 NORTH, RANGE 10 EAST, CITY OF MADISON, DANE COUNTY, WISCONSIN.

0 40 80 120

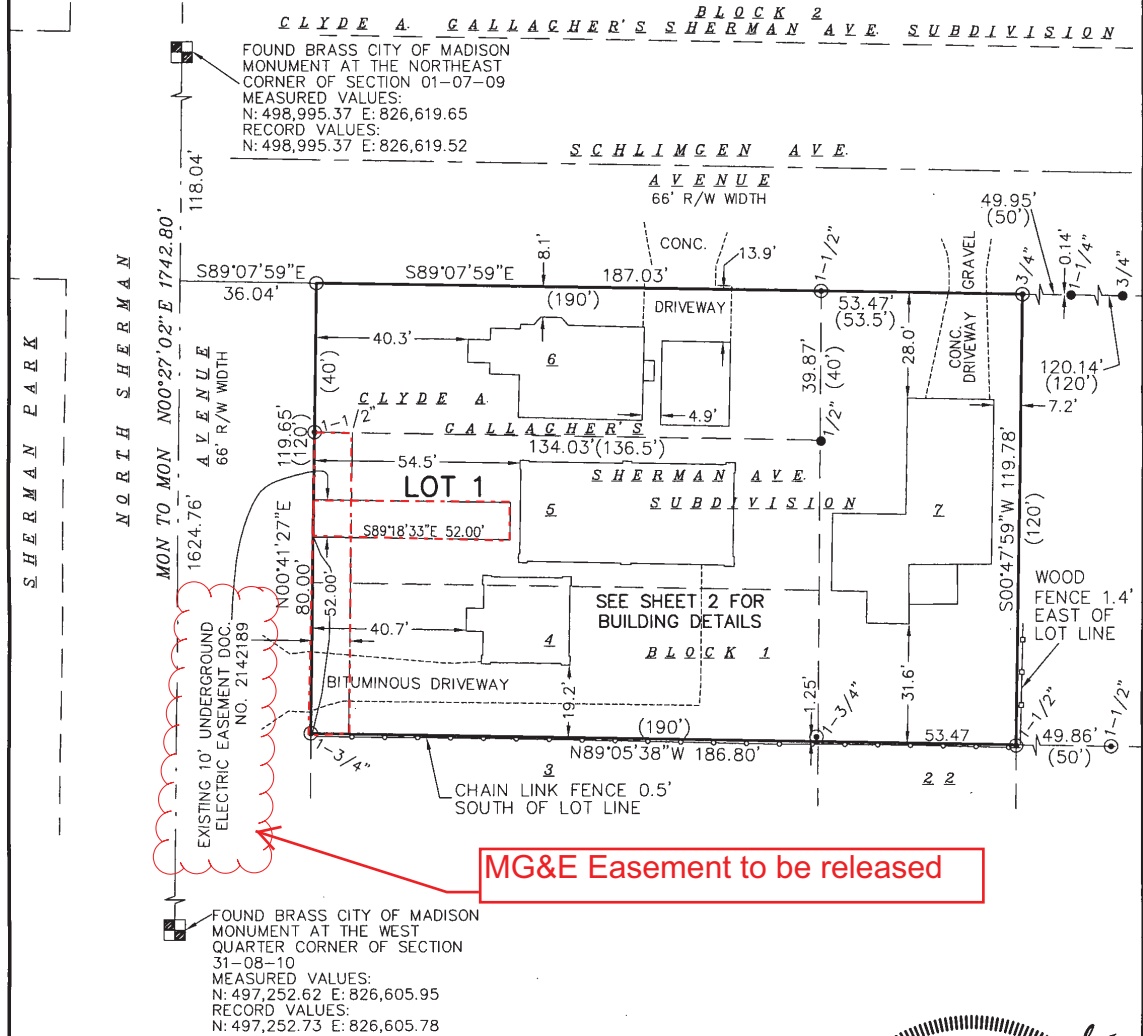


SCALE : ONE INCH = FORTY FEET

GRID NORTH
BEARINGS ARE BASED UPON THE
WISCONSIN COUNTY COORDINATE
SYSTEM (DANE ZONE)

NOTES:

- 1) SEE SHEET 2 BUILDING DETAILS AND LEGEND.
- 2) SEE SHEET 3 FOR ADDITIONAL NOTES.



SURVEYED FOR :

CITY OF MADISON WATER UTILITY
215 MARTIN LUTHER KING, JR. BLVD
MADISON, WI 53701

MAP NO. 13735

DOCUMENT NO. 5076881

VOLUME 90 PAGES 274-277

Date: 10-28-2013

Plot View: csm

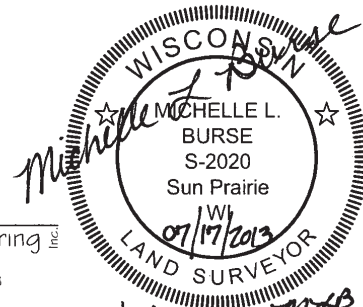
PROJECTS \BSE1658 \BSE1658.DWG

SURVEYED BY :

Burse

surveying & engineering inc.

1400 E. Washington Ave, Suite 158
Madison, WI 53703 608.250.9263
Fax: 608.250.9266
email: Mburse@BSE-INC.net
www.bursesurveyengr.com



REVSD: 11/01/2013

SHEET 1 OF 4