

EXHIBIT A Easement Area Map

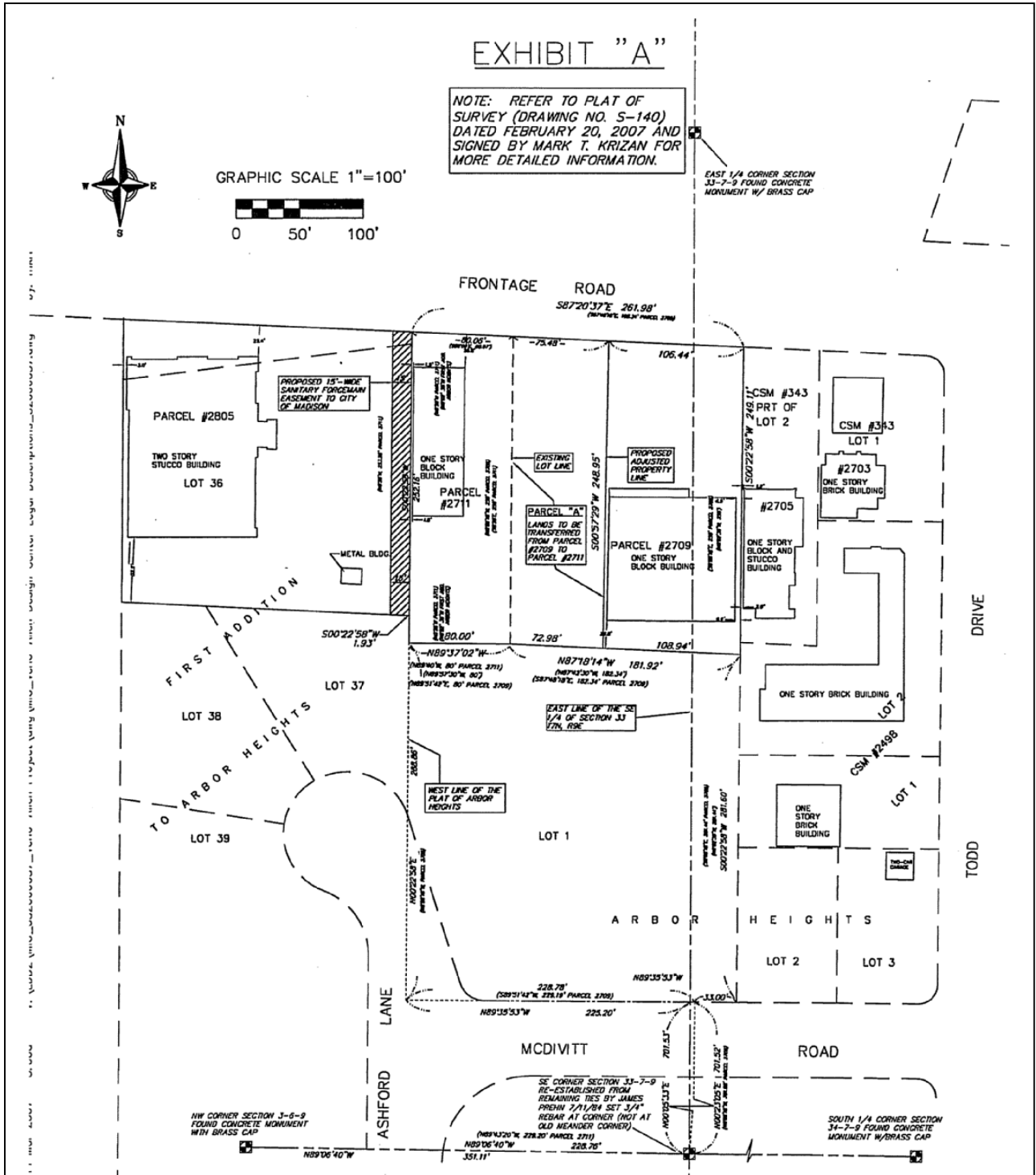
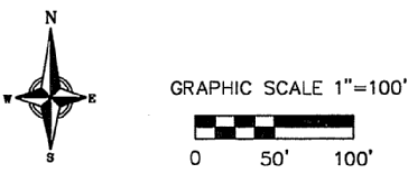


EXHIBIT "A"

NOTE: REFER TO PLAT OF SURVEY (DRAWING NO. S-140) DATED FEBRUARY 20, 2007 AND SIGNED BY MARK T. KRIZAN FOR MORE DETAILED INFORMATION.



EAST 1/4 CORNER SECTION 33-7-9 FOUND CONCRETE MONUMENT W/ BRASS CAP

VIERBICHER
ASSOCIATES
Committed to Quality Service Since 1976
REEDSBURG - MADISON - PRAIRIE DU CHIEN
999 Fourier Drive, Suite 201 Madison, Wisconsin 53717
Phone: (608) 826-0532 Fax: (608) 826-0530

REVISIONS	SCALE	AS SHOWN	SHEET
REVISION 1	CHECKED	JRQ	1 OF 1
REVISION 2	DRAFTER	MTK	
REVISION 3	FILE		
JOB NO. 32056037	DATE	FEB. 20, 2007	