

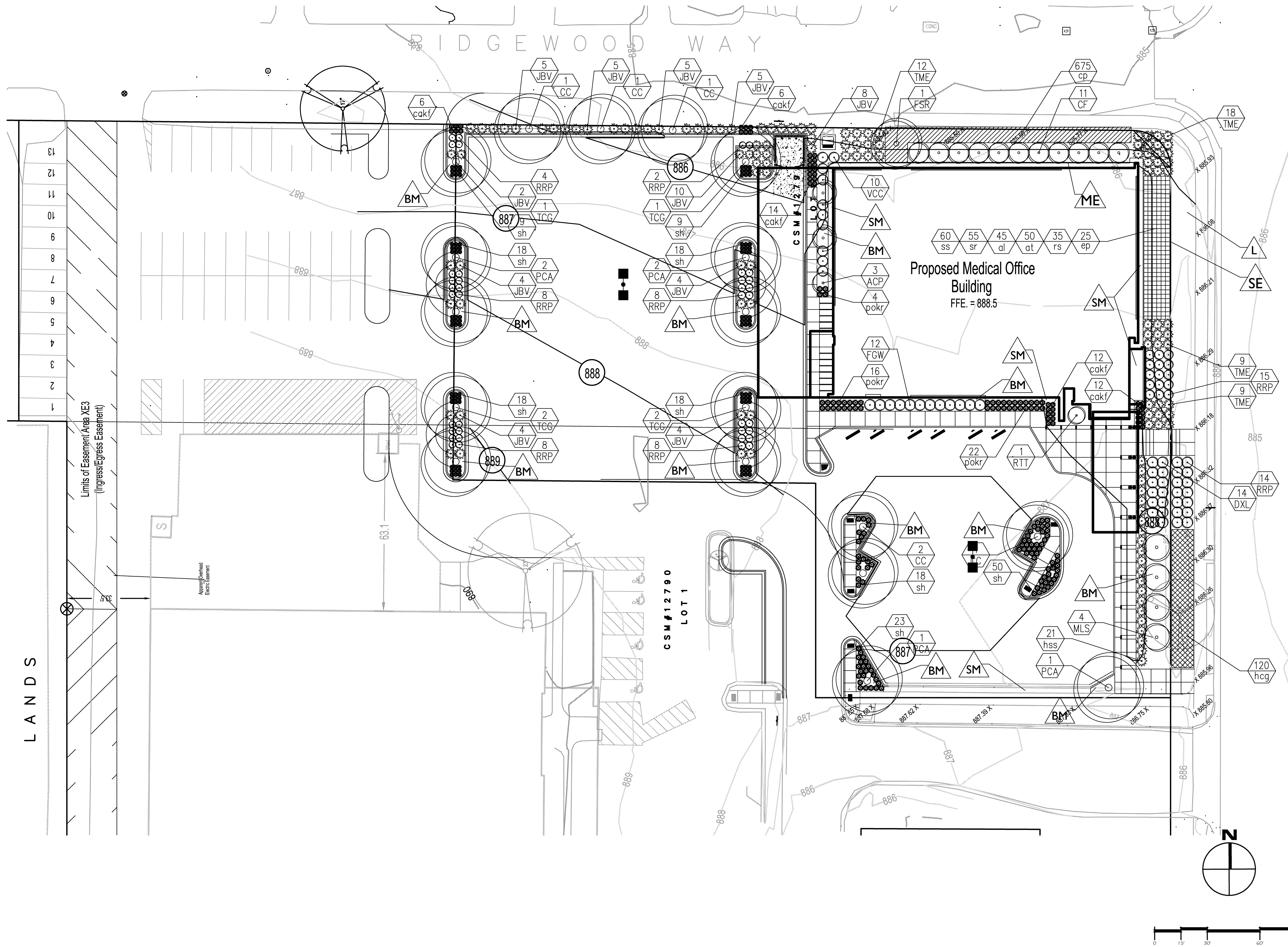
GENERAL NOTES

- Parking lot dimensions are from face of curb to face of curb unless noted otherwise.
- It shall be the responsibility of the subcontractors to notify all applicable utility companies who may be affected by the proposed work. The subcontractor shall make every effort to protect existing utility lines and shall repair any damages at their own expense. The subcontractors shall also coordinate their activities with other subcontractors to ensure compliance with the project schedule.
- All site concrete shall have a minimum 28 day compressive strength of 4000 psi, a slump of 4", an air content of 6% and a maximum water to cement ratio of 0.48.

SITE LEGEND

- EXISTING**
- Contours $\sim\sim\sim$ 100.0
- Spot elevations \rightarrow 100.0
- Trees to be saved
- Trees to be removed
- Storm sewer main / lateral $---12\ ST---12\ ST$
- Sanitary sewer main / lateral $---6\ SA---6\ SA$
- Water main / lateral $---4\ W---4\ W$
- Gas main / lateral $---GAS---GAS$
- Overhead Electrical service $---OH/E---OH/E$
- Underground Electrical service $---UG/E---UG/E$
- Overhead Telephone service $---OH/T---OH/T$
- Underground Telephone service $---UG/T---UG/T$
- PROPOSED:**
- Contours $\sim\sim\sim$ 100.0
- Spot elevations \rightarrow 100.0
- Trees
- Shrubs
- Storm sewer main / lateral $---12\ ST$
- Sanitary sewer main / lateral $---6\ SA$
- Water main / lateral $---4\ W---4\ W$
- Gas main / lateral $---GAS---GAS$
- Overhead Electrical service $---OH/E$
- Underground Electrical service $---UG/E$
- Overhead Telephone service $---OH/T$
- Underground Telephone service $---UG/T$
- Cable Television service $---COMM$
- MISCELLANEOUS:**
- Property line \bullet N $90^{\circ} 0' 0" E$ 11.32'
- Setback line $---$
- Silt fence $-s-$
- Site Phasing line $-dashed line-$
- Water line $-dotted line-$
- 100 Yr. Flood line $-dotted line-$
- Contract Limit line \bullet
- LANDSCAPING**
- Construction fence $-X-X-X-$
- Irrigation Area Zone line $-~::~~-$
- Landscape Edging line $-dashed line-$
- Mowing line $-+--+$
- Planting code symbol (Base Bid Plant) \diamond Plant Qty / Plant Code
- Planting code symbol (Add Alternate Plant) \square Plant Qty / Plant Code
- SYMBOLS**
- Existing Parking lights
- Proposed Parking lights
- Soil boring location & Number \bullet B1
- EXISTING**
- Precast flared end section
 - Concrete headwall
 - Storm catchbasin
 - Sanitary & storm manhole
 - Storm gooseneck
 - Cleanout
 - Storm inlet protection
 - Fire hydrant
 - Slamless connection
 - Water valve
 - Water meter
 - Gas meter
 - Power pole
 - Handicap sign
 - Flag pole
 - Concrete bollard
 - Conc. filled pipe bollard
 - Light bollard
 - Flood light
 - Concrete pavement slope arrow
- PROPOSED**
- Precast flared end section
 - Concrete headwall
 - Storm catchbasin
 - Sanitary & storm manhole
 - Storm gooseneck
 - Cleanout
 - Storm inlet protection
 - Fire hydrant
 - Slamless connection
 - Water valve
 - Water meter
 - Gas meter
 - Power pole
 - Handicap sign
 - Flag pole
 - Concrete bollard
 - Conc. filled pipe bollard
 - Light bollard
 - Flood light
 - Concrete pavement slope arrow

**Access
Community
Health
Centers**



Document Release

11-16-12	UDC REVIEW

©2012 ERDMAN COMPANY

LANDS