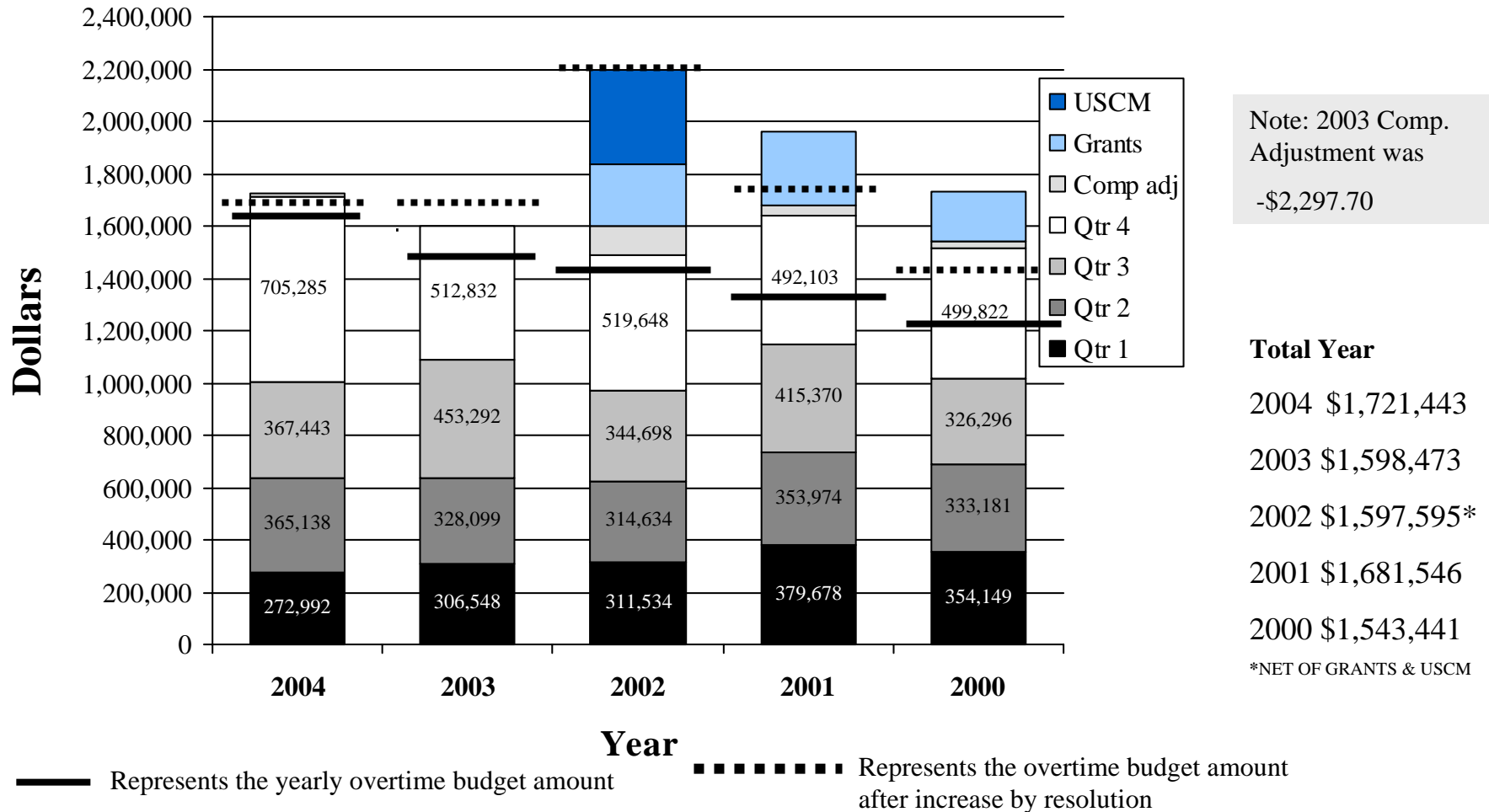
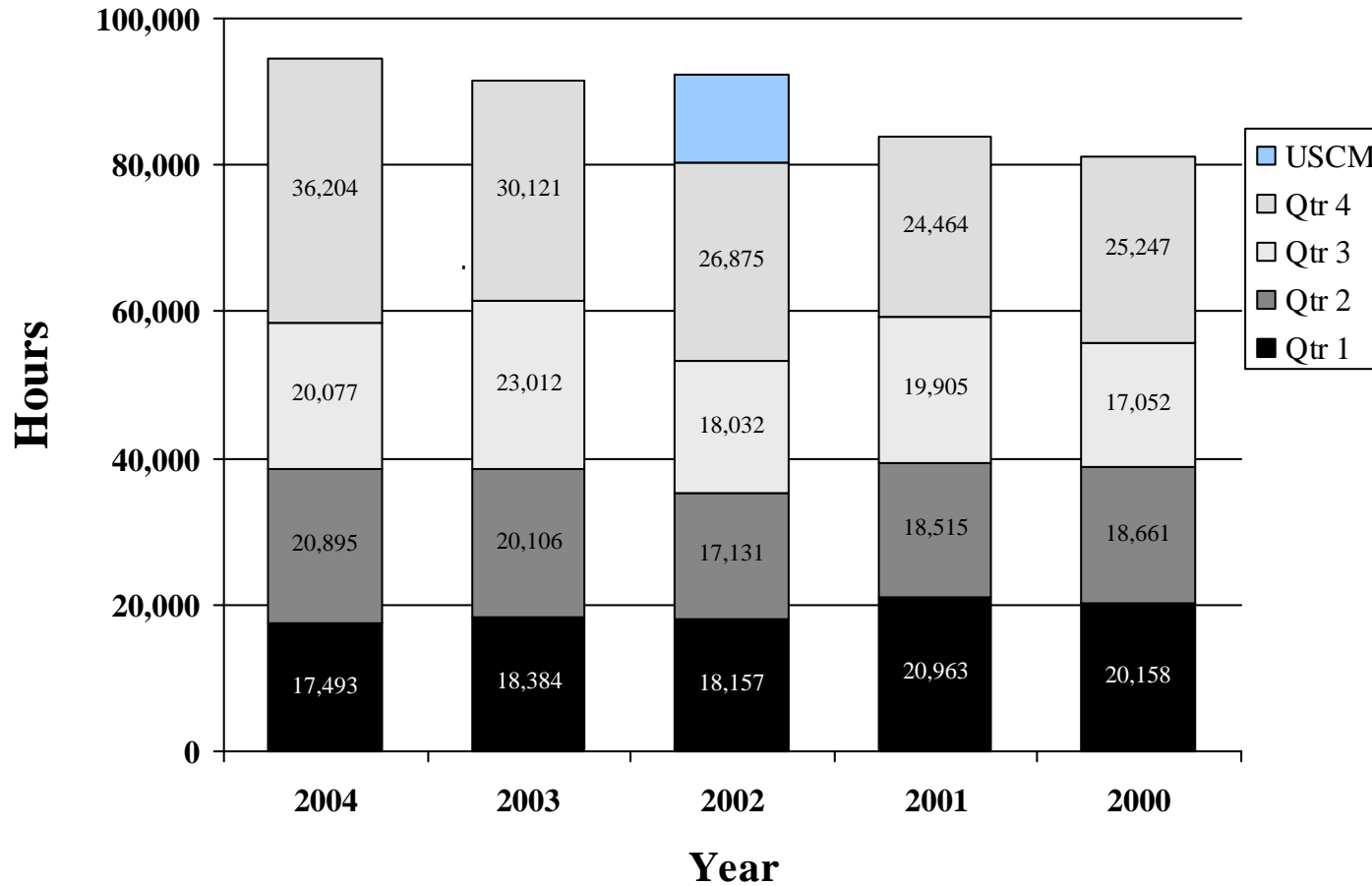


Comparison of Overtime Expenses 2004 - 2000



Comparison of Overtime Hours by Quarter 2004 - 2000



Total Year

2004 94,669

2003 91,623

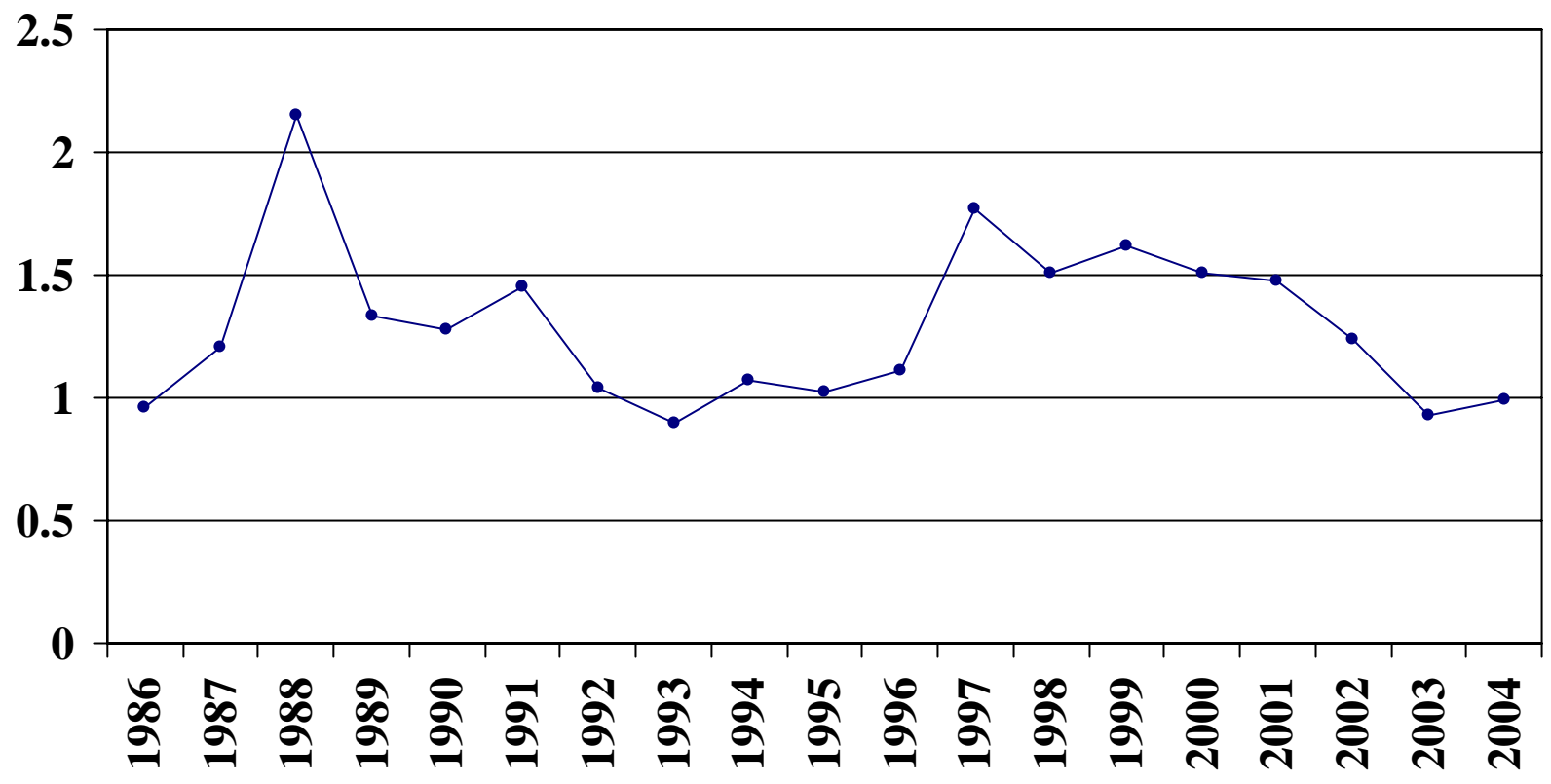
2002 80,195

2001 83,847

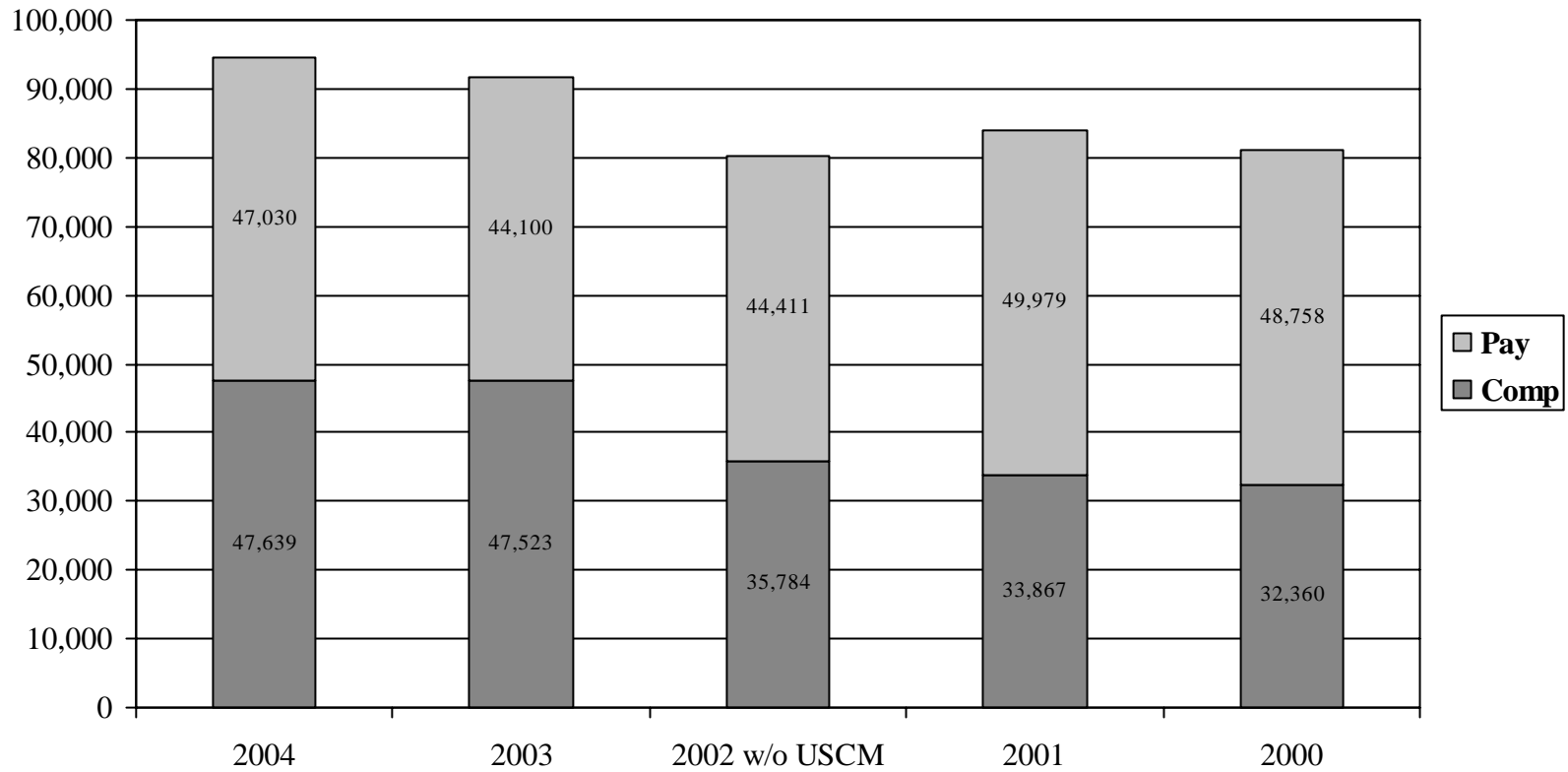
2000 81,118

*NET OF GRANTS & USCM

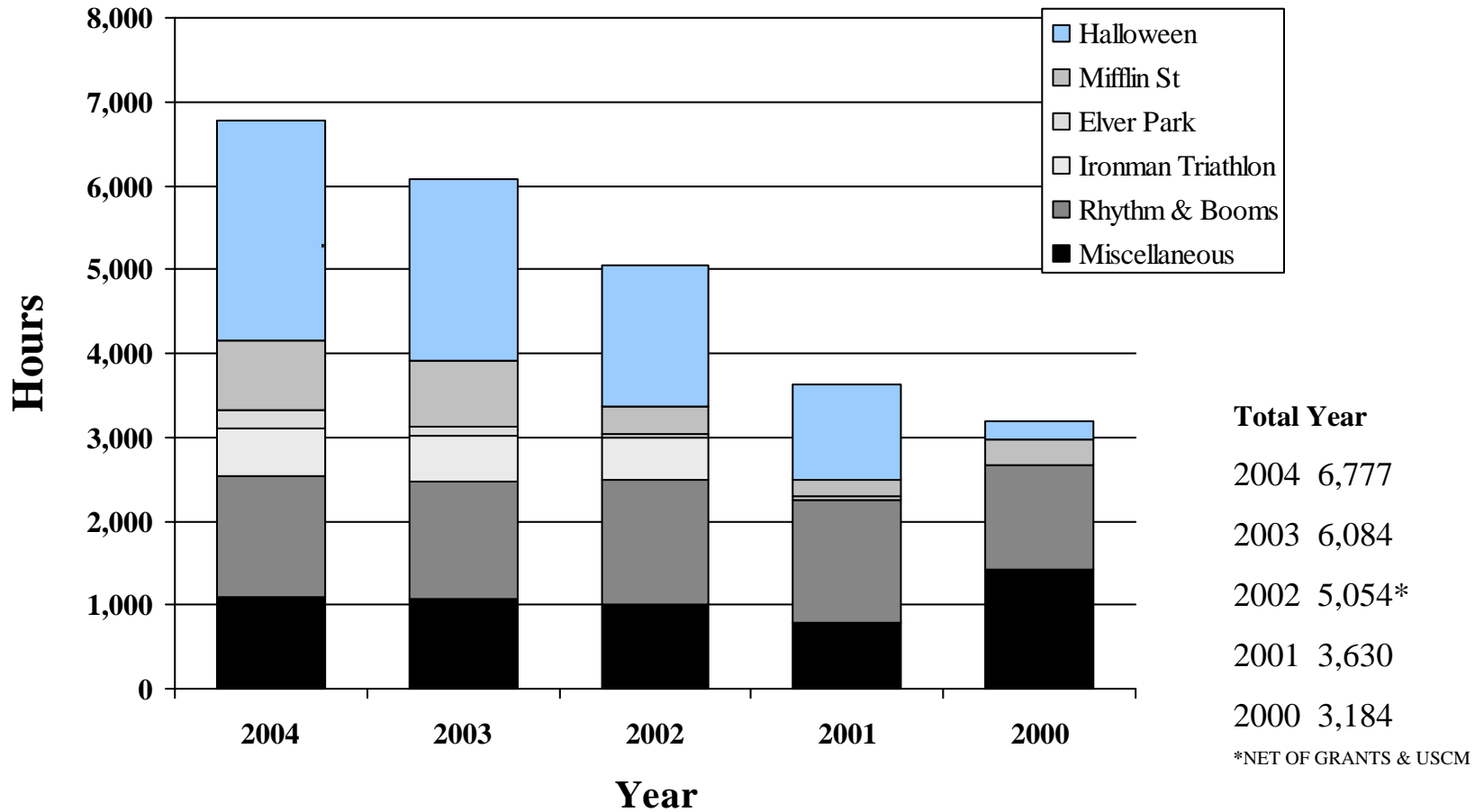
Pay-To-Time Ratio



Paid Hours vs. Comp Hours 2004 - 2000

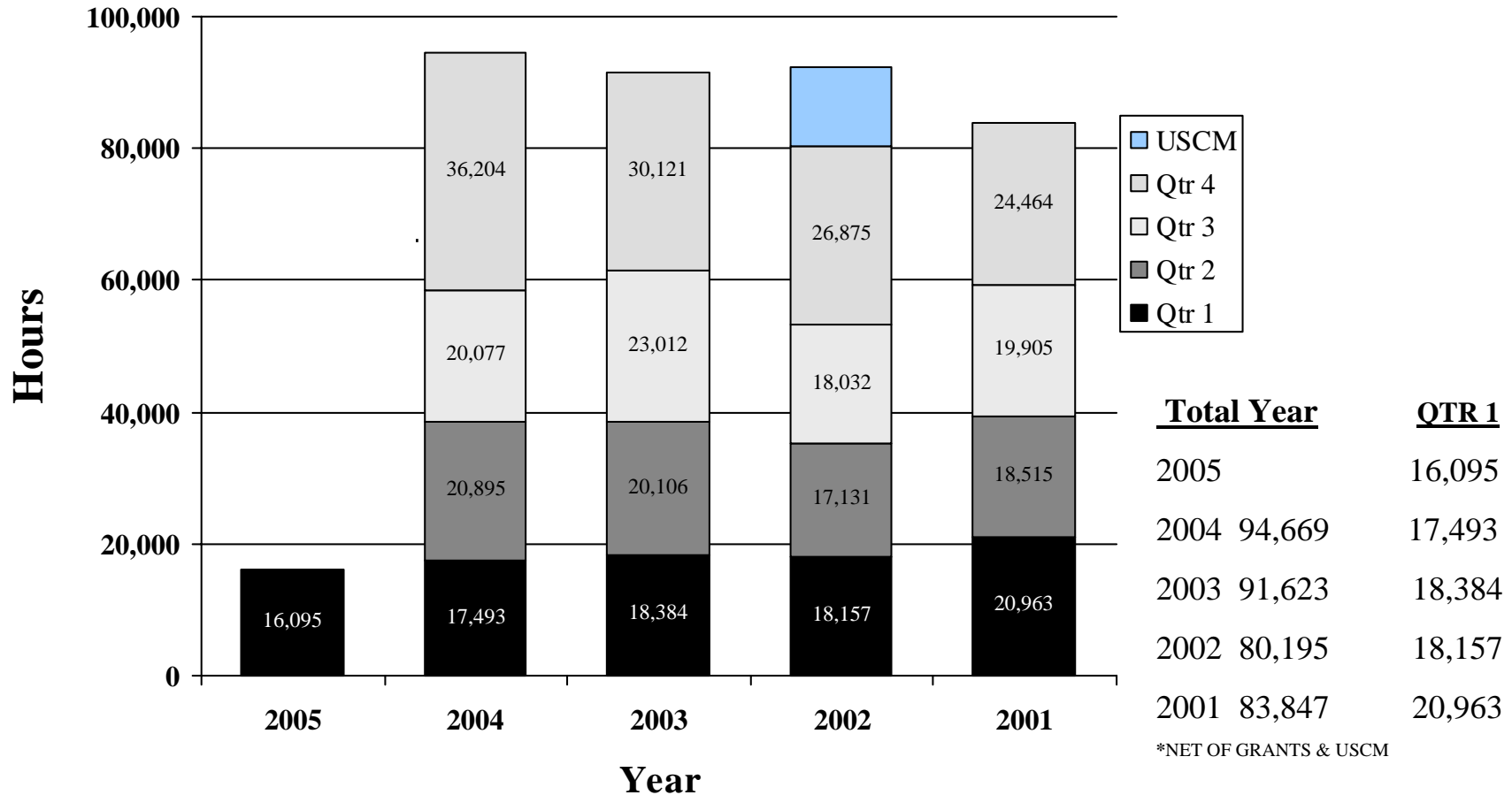


Comparison of Planned Events 2004 - 2000



Comparison of Overtime Hours by Quarter

1st Quarter 2005 - 2001



Comparison of Overtime Expenses 1st Quarter 2005 - 2001

