

E. WASHINGTON RETAIL

4302 E. WASHINGTON AVE.
 MADISON, WI

Architecture: Dimension IV - Madison, LLC, Madison, WI
 Civil Engineer: Calkins Engineering, LLC, Madison, WI
 Site Lighting: Schultz Electric Inc., Middleton, WI

LIST OF DRAWINGS

GENERAL

G0.1 COVER SHEET

SITE

C1.0 SITE PLAN

C2.0 GRADING PLAN (CALKINS)

C3.0 UTILITY PLAN (CALKINS)

C4.0 EROSION CONTROL PLAN (CALKINS)

L1.0 LANDSCAPE PLAN

E1.0 SITE LIGHTING PLAN (SCHULTZ)

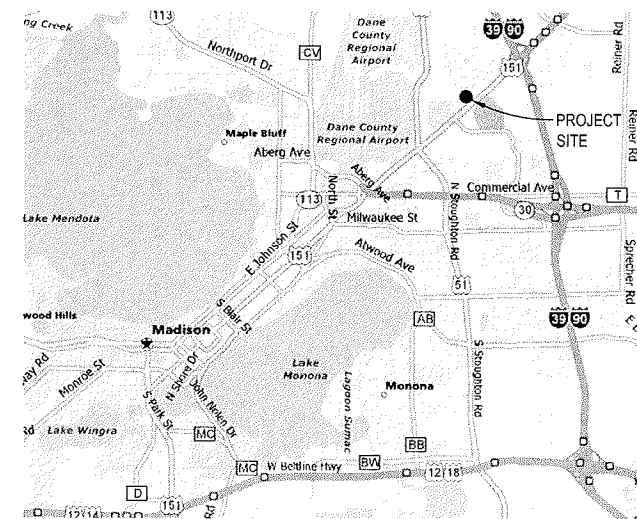
ARCHITECTURAL

A1.0 FLOOR PLAN

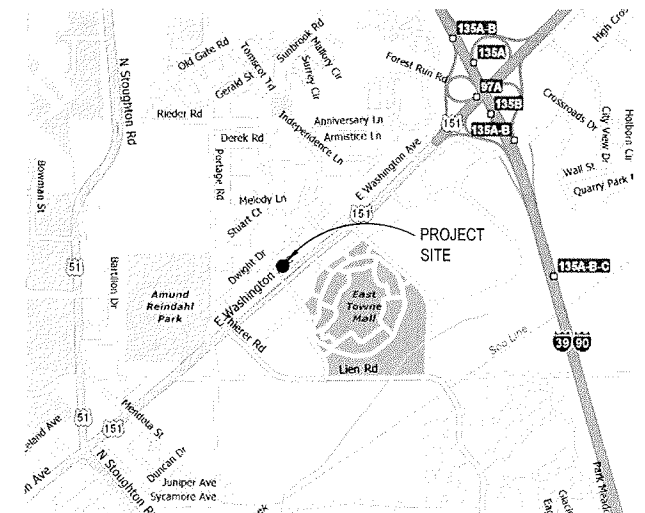
A2.0 ELEVATIONS



STATE MAP



CITY MAP



SITE LOCATION MAP

**E. WASHINGTON
RETAIL**

4302 E. WASHINGTON AVE.
MADISON, WI

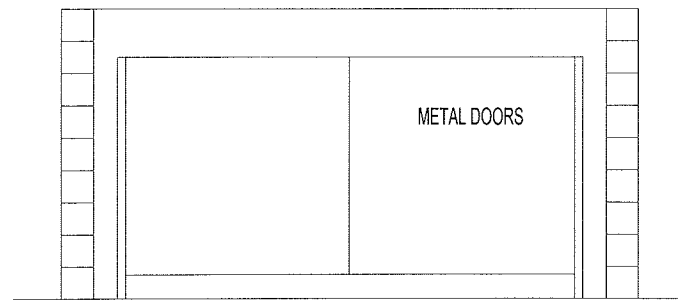
DATE OF ISSUE: 04/30/08

**PRELIMINARY
NOT FOR
CONSTRUCTION**

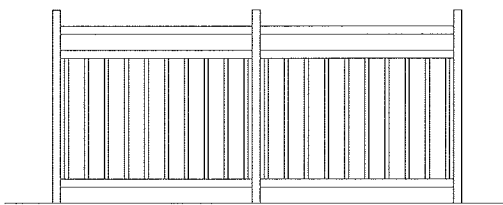
PROJECT #: 08005

SITE PLAN

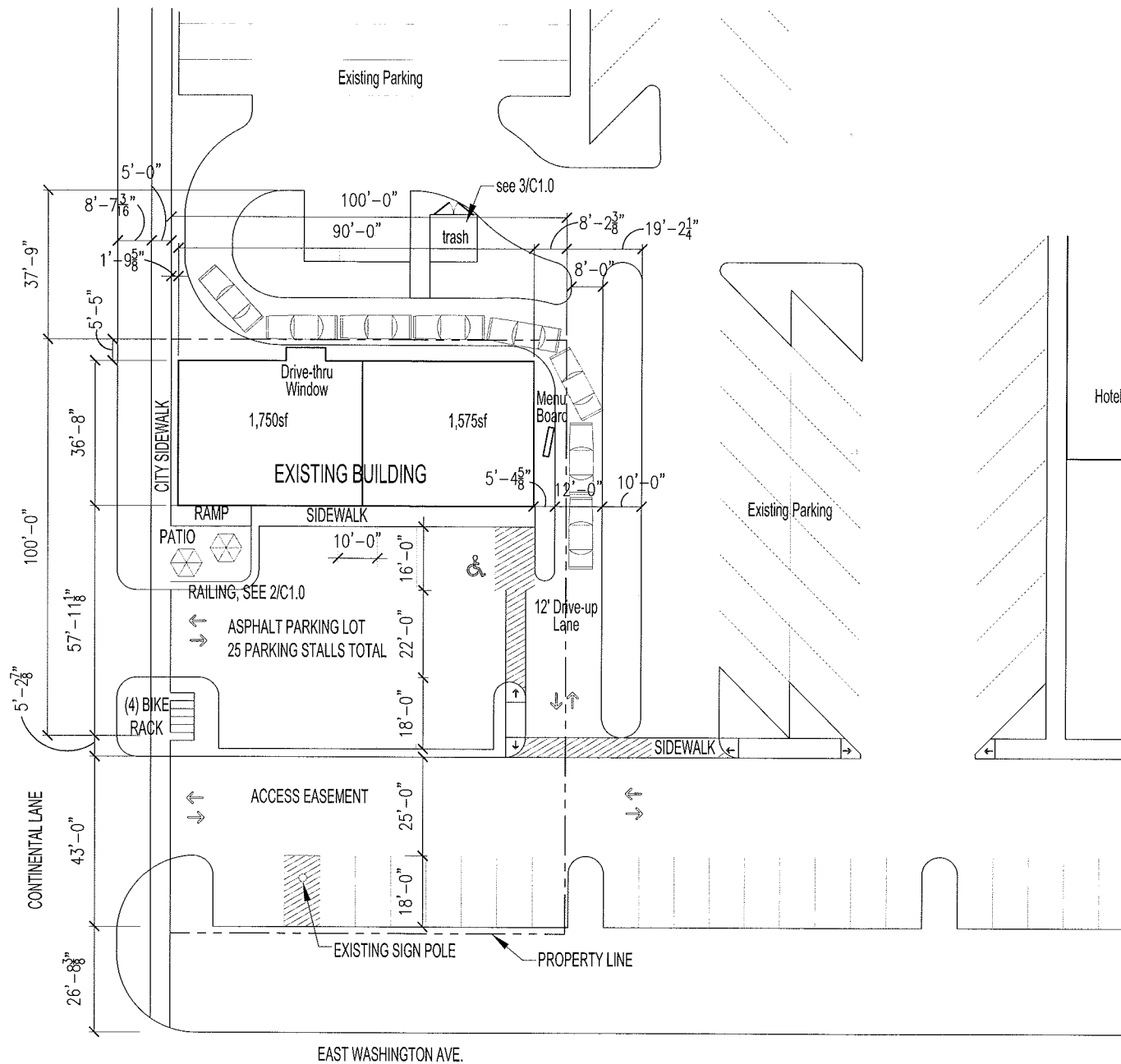
C1.0



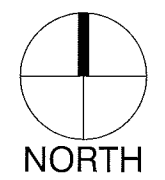
3 CMU TRASH ENCLOSURE
0 2' 4' 8'



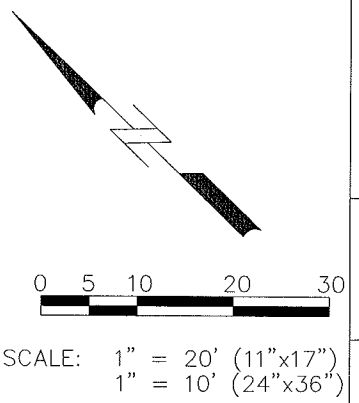
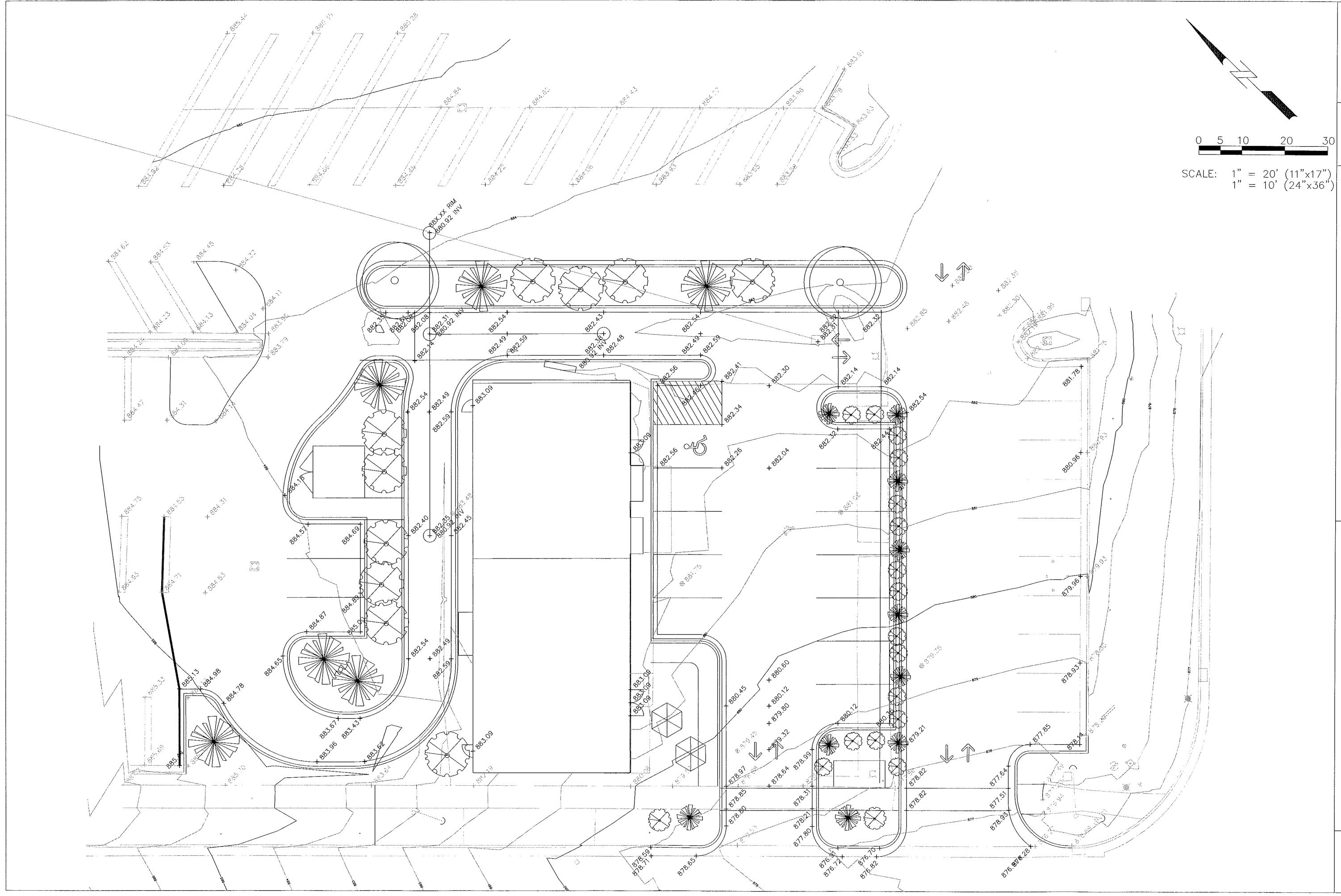
2 METAL RAILING DETAIL
0 2' 4' 8'



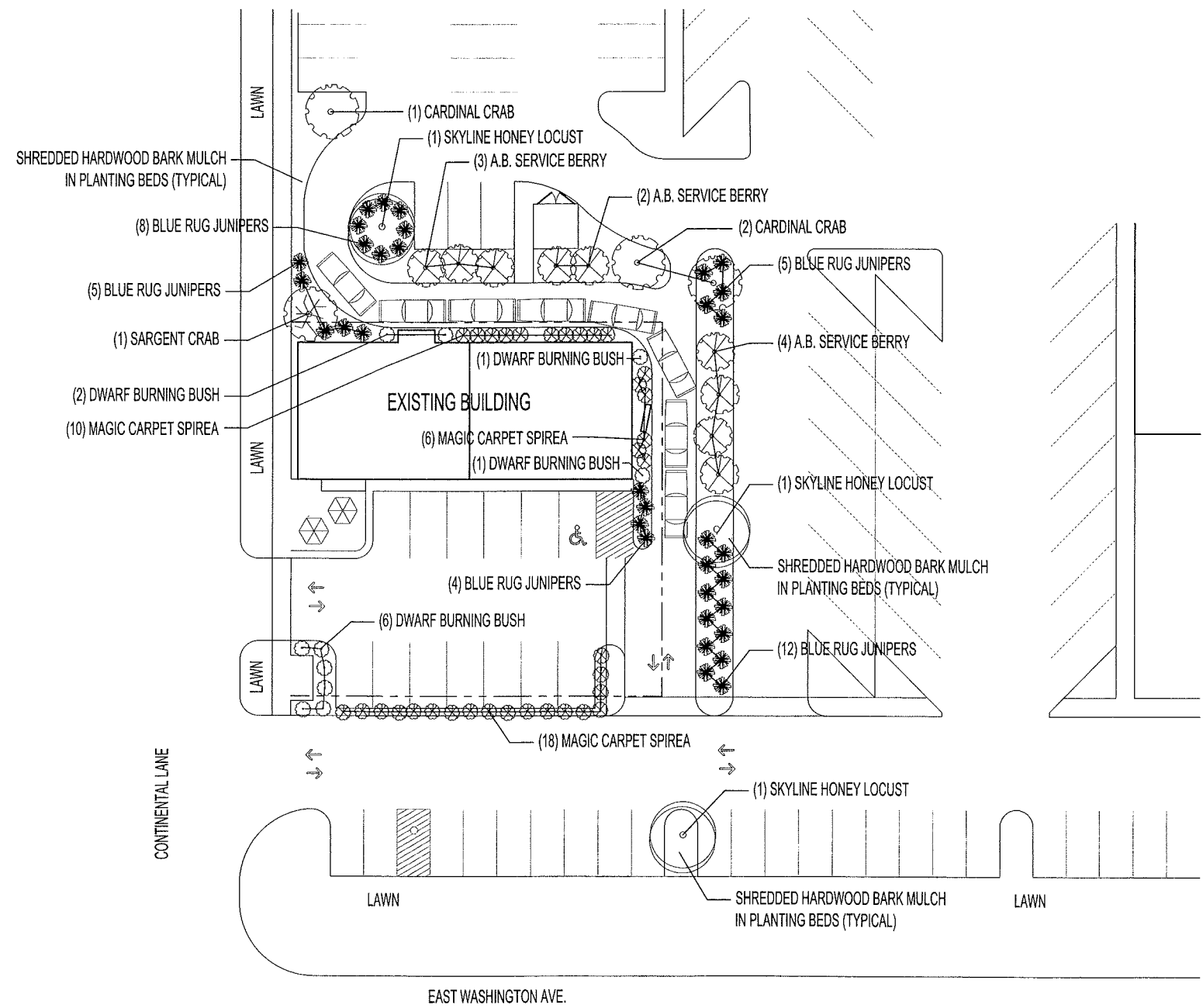
1 SITE PLAN Starbucks West End
0 20' 40' 80'



NORTH



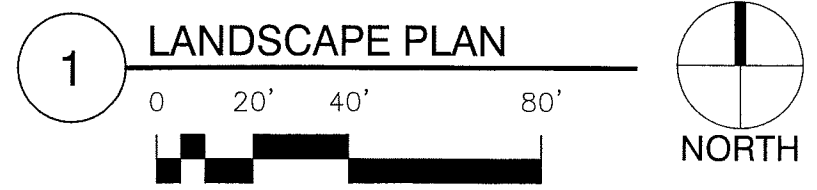
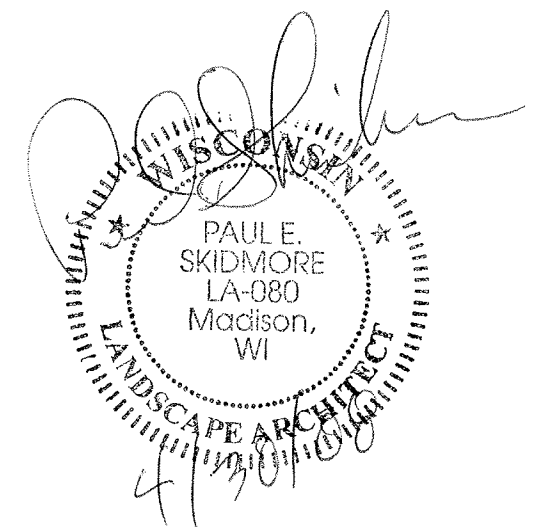
<p>E. WASHINGTON RETAIL GRADING PLAN</p>	<p>Calkins Engineering, LLC 5010 Vogas Road Madison, WI 53718 (608) 838-0444</p>
<p>Calkins Engineering, LLC Civil Engineers & Land Surveyors</p>	<p>DATE: 06-05-08 REVISIONS:</p>
<p>SHEET C2.0</p>	<p>DRAWING NAME : NE28.DWG/DESIGN-BASE.DWG FR: NE28</p>



PLANT LIST

QUANTITY	SIZE	TYPE	ROOT
3	2 1/2"	SKYLINE HONEY LOCUST	BB
3	1 1/2"	CARDINAL CRAB	BB
1	1/2"	SARGENT CRAB	BB
9	5'	A.B. SERVICE BERRY	BB
10	24"	DWARF BURNING BUSH	CONT.
34	15"	MAGIC CARPET SPIREA	CONT.
34	29"	BLUE RUG JUNIPER	CONT.

- NOTES:
- RESTORE ALL DISTURBED TURF AREAS WITH TOPSOIL, SEED, FERTILIZER, AND MULCH.
 - FURNISH AND INSTALL 3" OF SHREDDED HARDWOOD BARK MULCH IN ALL PLANTING BEDS.
 - PROVIDE WATERING OF ALL PLANT MATERIAL UNTIL COMPLETION OF LANDSCAPE INSTALLATION.



**E. WASHINGTON
 RETAIL**

4302 E. WASHINGTON AVE.
 MADISON, WI

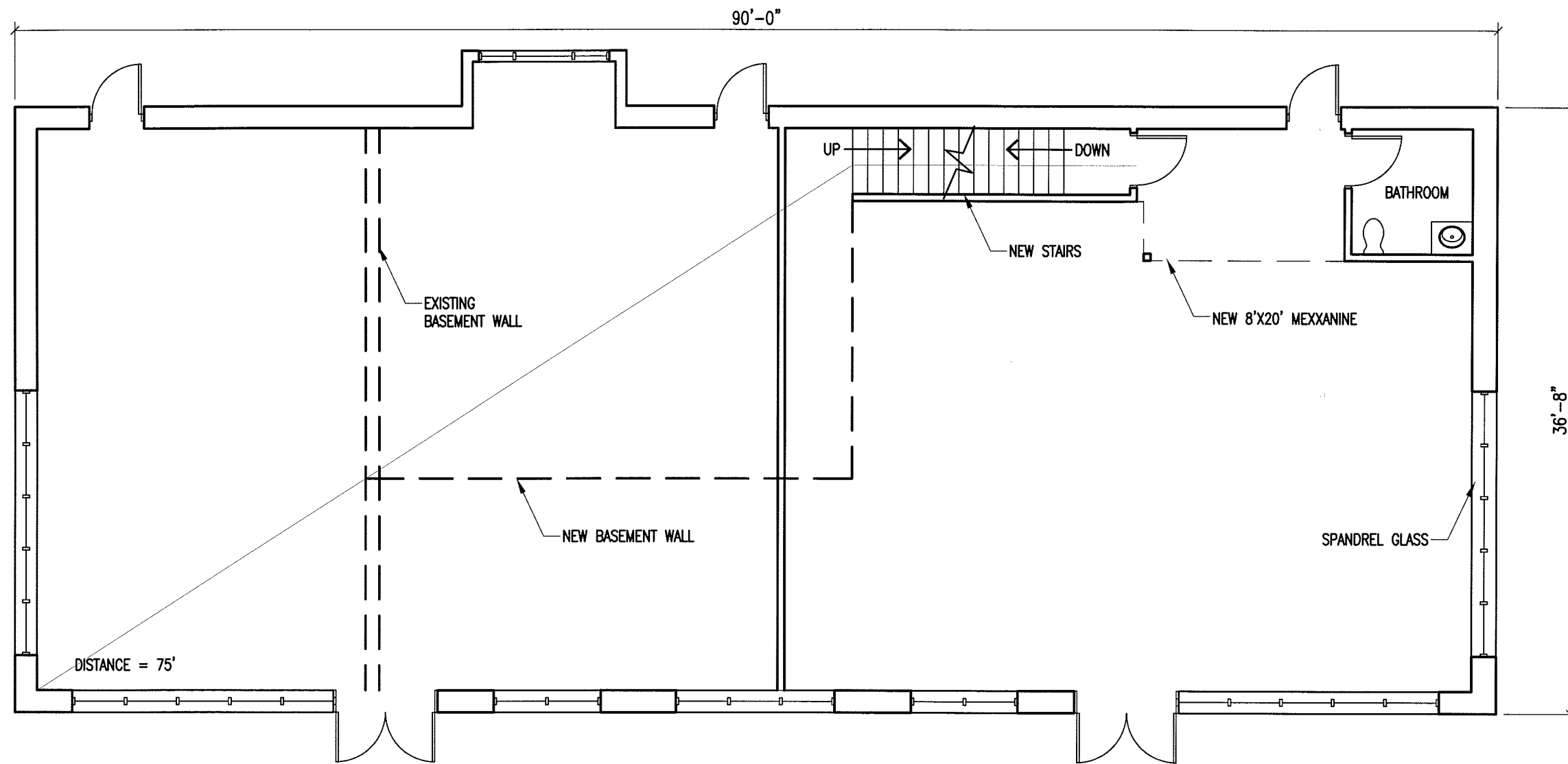
DATE OF ISSUE: 04/28/08

**PRELIMINARY
 NOT FOR
 CONSTRUCTION**

PROJECT #: 08005

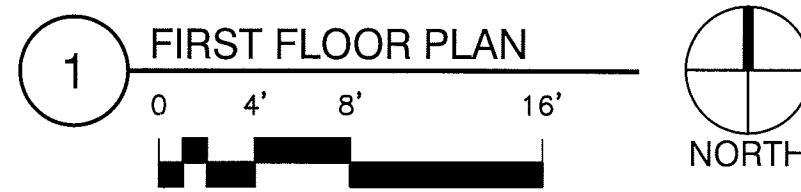
LANDSCAPE PLAN

L1.0



**E. WASHINGTON
 RETAIL**

4302 E. WASHINGTON AVE.
 MADISON, WI



DATE OF ISSUE: 04/30/08

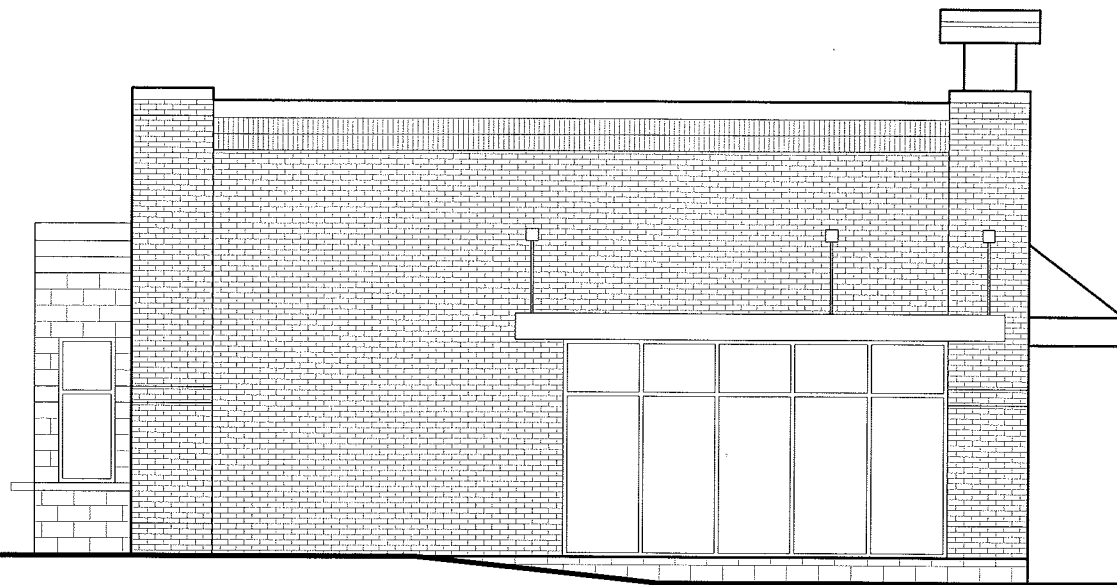
**PRELIMINARY
 NOT FOR
 CONSTRUCTION**

PROJECT #: 08005

FIRST FLOOR PLAN

A1.0

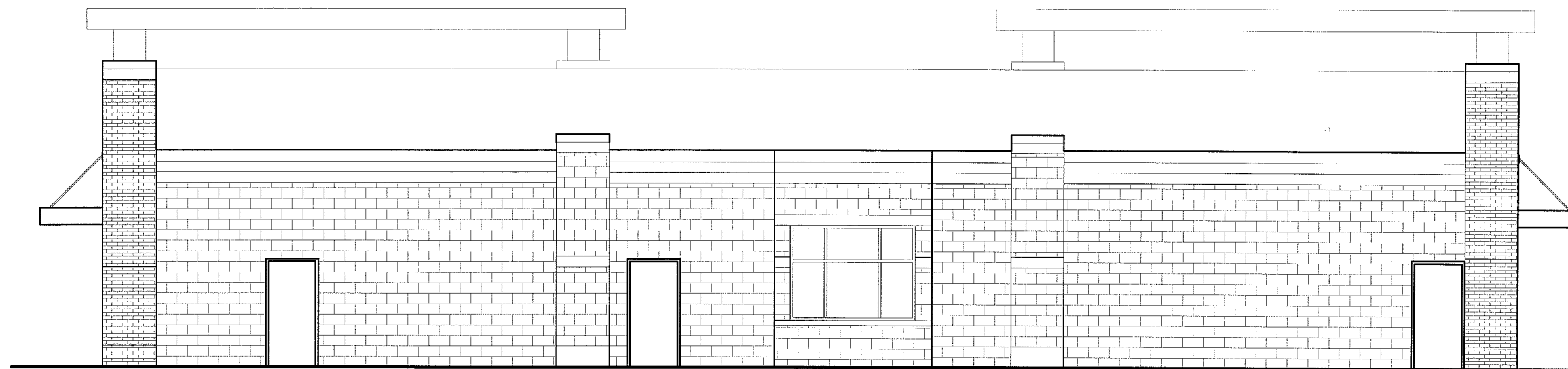
WEST & EAST ELEVATION



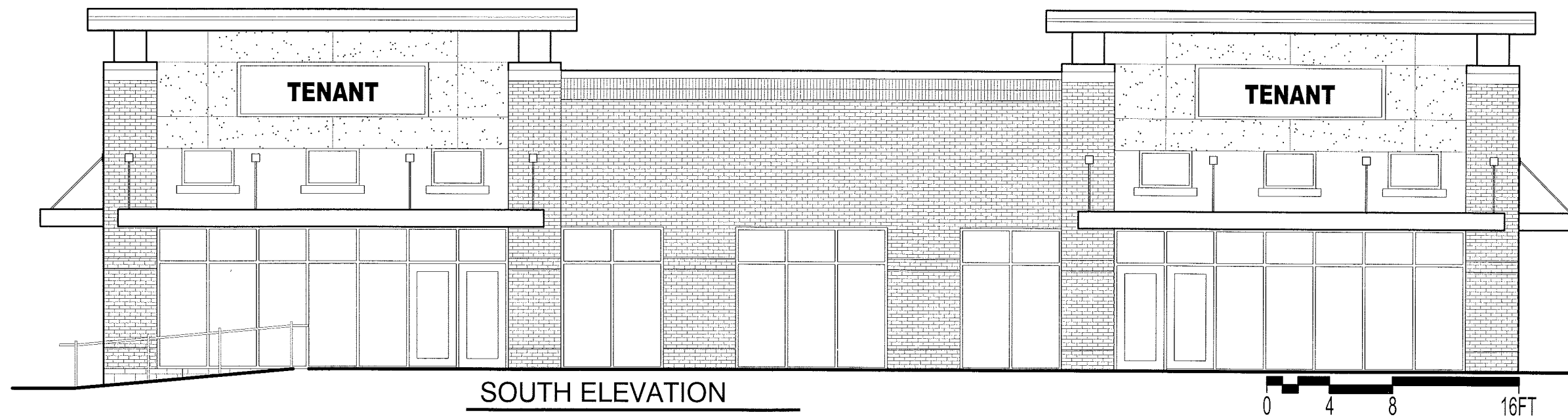
**E. WASHINGTON
 RETAIL**

4302 E. WASHINGTON AVE.
 MADISON, WI

NORTH ELEVATION



SOUTH ELEVATION



DATE OF ISSUE: 04/30/08

**PRELIMINARY
 NOT FOR
 CONSTRUCTION**

PROJECT #: 08005

ELEVATIONS

A2.0

DESCRIPTION

The classic lines and sophisticated construction of the Vision Site luminaire makes it an ideal complement to site design. The combination of smooth contours and sharp rear reveals allow the fixture to change character from different viewing angles while providing excellent low-glare photometrics. U.L. listed and CSA certified for wet locations.

Catalog #	VXM-250-MH-MT-4S-BZ-HS	Type	OA1
Project		Date	04/29/2008
Comments			
Prepared by			

SPECIFICATION FEATURES

A ... Housing

One-piece, die-cast aluminum housing maintains a nominal 0.125" wall thickness. Integral reveal channels along top surface of housing promote heat extraction and prolonged electrical component life. Solid cast wall separates optical chamber from electrical area.

B ... Electrical Tray

Ballast and related electrical componentry are mounted to a reinforced one piece galvanized steel tray with integral handle. For ease of maintenance, tray hinges open via toolless release of one spring loaded latch. Electrical quick disconnects allow tray to be completely removed from housing providing ample hand and tool room for attachment of fixture during installation, and a safer servicing environment. Optional tray mounted fuse connections offer a distinct and easy to maintain alternative to common inline fuse connections.

C ... Door

One-piece die-cast aluminum door frame. Door frame opens via release of two flush mounted toolless latches.

Tempered 1/8" thick clear glass lens seals to door with a weather-tight continuous gasket. Optical chamber is sealed against entry of dirt and moisture by a continuous door mounted gasket which firmly compresses against optical enclosure walls.

D ... Lens

Impact resistant 1/8" thick tempered clear flat glass.

E ... Optical Systems

Choice of five (5) efficiency segmented optical systems constructed of premium 95% reflective anodized aluminum sheet. Optical segments are rigidly mounted inside a thick gauge aluminum housing for superior protection. All segment faces are clean of rivet heads, tabs, or other means of attachment which may cause streaking in the light distribution. Optional high efficiency hydroformed reflectors available in VXM housing only in four (4) distributions patterns. All reflector modules feature toolless removal, quick disconnect wiring plugs, and are field rotatable in 90 degree increments. HID lamp sources in medium housing (VXM) optics feature mogul-base lampholders.

F ... Arm

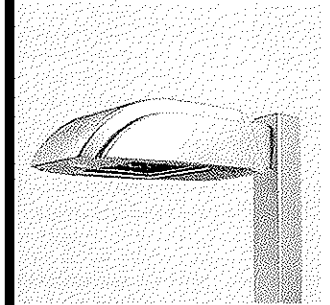
One-piece extruded rectangular arm available in standard 6" and 10" lengths. Internal bolt guides allow easy positioning of fixture during installation to pole or wall surface.

G ... Structural Mount

Die-cast aluminum cleat factory mounted to luminaire and finished in luminaire color. Stainless steel structural rod measures 1/2" in diameter and is provided in luminaire finish color or optional natural finish. Product works in conjunction with accessory 10" arms. INVUE poles provided pre-drilled for suspension mount option. See INVUE pole brochure for a complete selection of matching poles.

H ... Finish

Housing and arm finished in a 5 stage premium TGIC polyester powder coat paint, 2.5 mil nominal thickness for superior protection against fade and wear. Standard colors include black, bronze, grey, white, dark platinum, and graphite metallic. RAL and custom color matches available. Consult your INVUE Lighting Systems Representative for more information.



VXM VISION SITE MEDIUM

85-400W

Metal Halide

Pulse Start Metal Halide

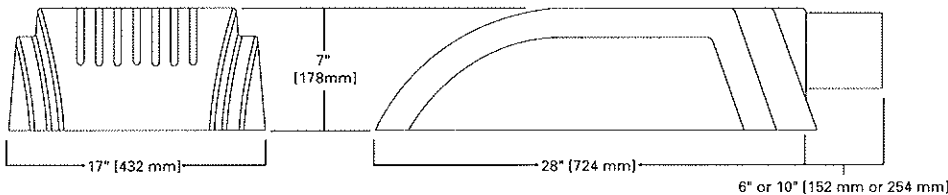
High Pressure Sodium

Compact Fluorescent

Electrodeless Fluorescent

**ARCHITECTURAL
AREA LUMINAIRE**

DIMENSIONS



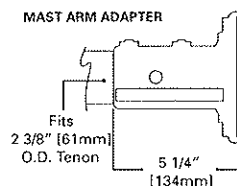
Wattage Table

	VXM
Metal Halide	175, 250, 400W
Pulse Start Metal Halide	250, 320, 350, 400W
High Pressure Sodium	150, 250, 400W
Compact Fluorescent	(2) 57, (2) 70W
Electrodeless Fluorescent	85W

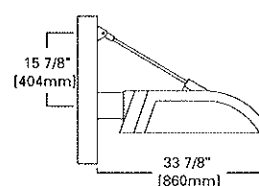
Certifications

IP54 Rated	U.L. 1598 Listed	3G Vibration Tested	FCO Full Cutoff
CSA Listed	40°C Ambient	ISO 9001	

MOUNTING OPTIONS



STRUCTURAL MOUNT



EPA: (effected projected area)

Single: 1.6

Single Structural: 1.82

SHIPPING DATA (approx.)

Net Weight (lbs.): 51

Volume (cu. ft): 3.18

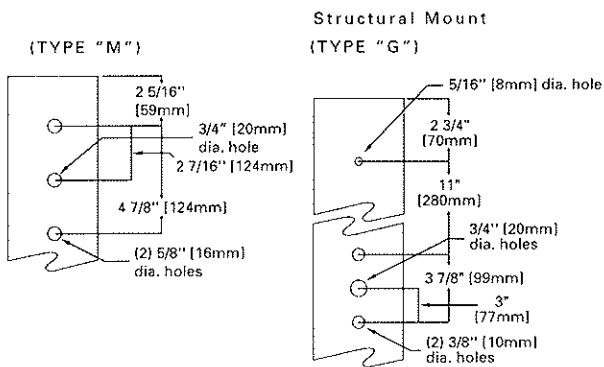
ORDERING INFORMATION

VXM-250-MH-MT-4S-BZ-HS

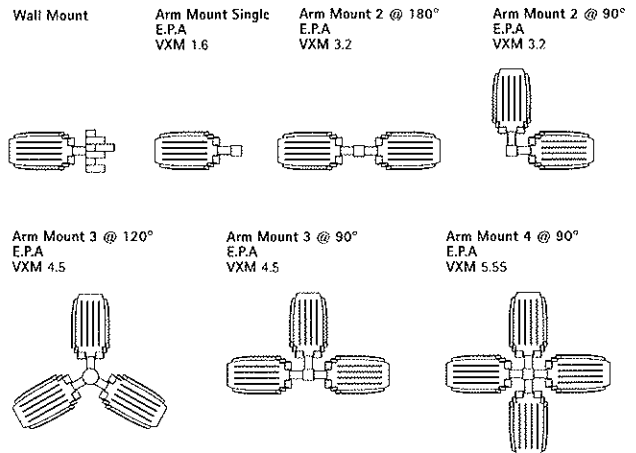
VXM	250	MH	MT	4S	BZ	HS
Product Family ¹ VXM: Vision Site Medium	Lamp Type MH: Metal Halide		Optical System 4S: Type IV		Options ⁵ HS: House Side Shield ⁶	
Lamp Wattage 250: 250W	Voltage ² MT: Multi-Tap wired ³ 277V		Color ⁴ BZ: Bronze			

Notes: 1 Arm not included. See accessories. 2 Products also available in non-US voltages and 50Hz for international markets. Consult factory for availability and ordering information. 3 Multi-tap is 120/208/240/277V wired 277V. 4 Custom and RAL color matching available upon request. Consult your INVUE Lighting Systems Representative for further information. 5 Add as suffix in the order shown. 6 House side shield not available on 5S and SL optics. 7 Order separately, replace XX with color suffix.

DRILLING PATTERNS



MOUNTING VARIATIONS



DESCRIPTION

The classic lines and sophisticated construction of the Vision Site luminaire makes it an ideal complement to site design. The combination of smooth contours and sharp rear reveals allow the fixture to change character from different viewing angles while providing excellent low-glare photometrics. U.L. listed and CSA certified for wet locations.

Catalog #	VXM-250-MH-MT-3S-BZ-HS	Type	OA2
Project		Date	04/29/2008
Comments			
Prepared by			

SPECIFICATION FEATURES

A ... Housing

One-piece, die-cast aluminum housing maintains a nominal 0.125" wall thickness. Integral reveal channels along top surface of housing promote heat extraction and prolonged electrical component life. Solid cast wall separates optical chamber from electrical area.

B ... Electrical Tray

Ballast and related electrical componentry are mounted to a reinforced one piece galvanized steel tray with integral handle. For ease of maintenance, tray hinges open via toolless release of one spring loaded latch. Electrical quick disconnects allow tray to be completely removed from housing providing ample hand and tool room for attachment of fixture during installation, and a safer servicing environment. Optional tray mounted fuse connections offer a distinct and easy to maintain alternative to common inline fuse connections.

C ... Door

One-piece die-cast aluminum door frame. Door frame opens via release of two flush mounted toolless latches.

Tempered 1/8" thick clear glass lens seals to door with a weather-tight continuous gasket. Optical chamber is sealed against entry of dirt and moisture by a continuous door mounted gasket which firmly compresses against optical enclosure walls.

D ... Lens

Impact resistant 1/8" thick tempered clear flat glass.

E ... Optical Systems

Choice of five (5) efficiency segmented optical systems constructed of premium 95% reflective anodized aluminum sheet. Optical segments are rigidly mounted inside a thick gauge aluminum housing for superior protection. All segment faces are clean of rivet heads, tabs, or other means of attachment which may cause streaking in the light distribution. Optional high efficiency hydroformed reflectors available in VXM housing only in four (4) distributions patterns. All reflector modules feature toolless removal, quick disconnect wiring plugs, and are field rotatable in 90 degree increments. HID lamp sources in medium housing (VXM) optics feature mogul-base lampholders.

F ... Arm

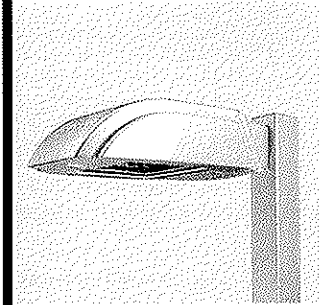
One-piece extruded rectangular arm available in standard 6" and 10" lengths. Internal bolt guides allow easy positioning of fixture during installation to pole or wall surface.

G ... Structural Mount

Die-cast aluminum cleat factory mounted to luminaire and finished in luminaire color. Stainless steel structural rod measures 1/2" in diameter and is provided in luminaire finish color or optional natural finish. Product works in conjunction with accessory 10" arms. INVUE poles provided pre-drilled for suspension mount option. See INVUE pole brochure for a complete selection of matching poles.

H ... Finish

Housing and arm finished in a 5 stage premium TGIC polyester powder coat paint, 2.5 mil nominal thickness for superior protection against fade and wear. Standard colors include black, bronze, grey, white, dark platinum, and graphite metallic. RAL and custom color matches available. Consult your INVUE Lighting Systems Representative for more information.



VXM VISION SITE MEDIUM

85-400W

Metal Halide

Pulse Start Metal Halide

High Pressure Sodium

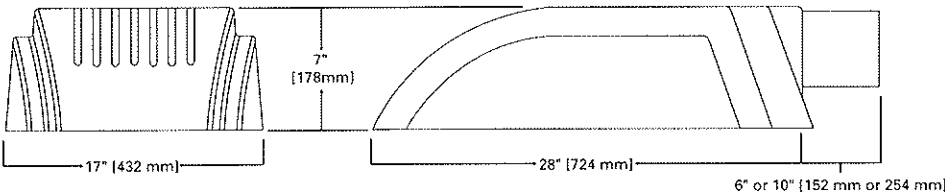
Compact Fluorescent

Electrodeless Fluorescent

ARCHITECTURAL

AREA LUMINAIRE

DIMENSIONS



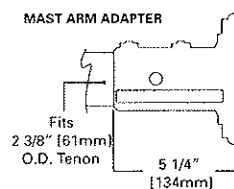
Wattage Table

	VXM
Metal Halide	175, 250, 400W
Pulse Start Metal Halide	250, 320, 350, 400W
High Pressure Sodium	150, 250, 400W
Compact Fluorescent	(2) 57, (2) 70W
Electrodeless Fluorescent	85W

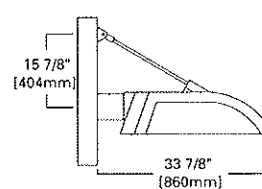
Certifications

IP54 Rated	U.L. 1598 Listed	3G Vibration Tested	FCO Full Cutoff
CSA Listed	40°C Ambient	ISO 9001	

MOUNTING OPTIONS



STRUCTURAL MOUNT



EPA: (effected projected area)

Single: 1.6

Single Structural: 1.82

SHIPPING DATA (approx.)

Net Weight (lbs.): 51

Volume (cu. ft): 3.18

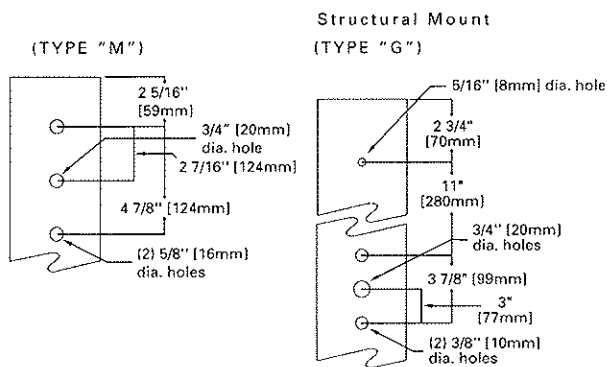
ORDERING INFORMATION

VXM-250-MH-MT-3S-BZ-HS

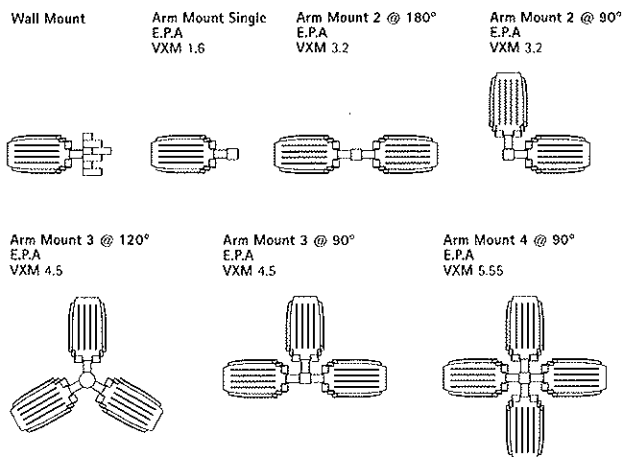
VXM	250	MH	MT	3S	BZ	HS
Product Family ¹ VXM: Vision Site Medium	Lamp Type MH: Metal Halide		Optical System 3S: Type III		Options ⁵ HS: House Side Shield ⁶	
Lamp Wattage 250: 250W	Voltage ² MT: Multi-Tap wired ³ 277V		Color ⁴ BZ: Bronze			

Notes: 1 Arm not included. See accessories. 2 Products also available in non-US voltages and 50Hz for international markets. Consult factory for availability and ordering information. 3 Multi-tap is 120/208/240/277V wired 277V. 4 Custom and RAL color matching available upon request. Consult your INVUE Lighting Systems Representative for further information. 5 Add as suffix in the order shown. 6 House side shield not available on 5S and SL optics. 7 Order separately, replace XX with color suffix.

DRILLING PATTERNS



MOUNTING VARIATIONS



COOPER LIGHTING - LUMARK®

DESCRIPTION

The IMPACT Trapezoid cutoff wall luminaire makes an ideal complement to site design. U.L. Listed and CSA Certified for wet locations in down mount applications and damp locations in up mounted applications.

Rugged construction and full cutoff classified optics provide facade and security lighting for light restricted zones surrounding schools, office complexes, apartments, and recreational facilities.

Catalog #	MHIP-T-100-MT	Type	OB
Project		Date	04/29/2008
Comments			
Prepared by			

SPECIFICATION FEATURES

A ... Housing

The housing is a two-piece design of die-cast aluminum for precise control of tolerances and repeatability.

B ... Mounting

Gasketed and zinc plated rigid steel mounting attachment fits directly to 4" J-Box or wall with "Hook-N-Lock" mechanism for quick installation. Secured with two (2) captive corrosion resistant black oxide coated allen head set screws concealed but accessible from bottom.

C ... Optical Modules

All optical modules utilize high performance 95% reflective sheet. Type II optical module is standard.

D ... Ballast

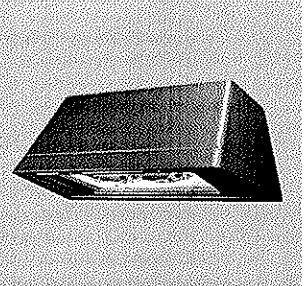
HID luminaires supplied with high power factor ballast with Class H insulation. Minimum starting temperatures are -40°C (-40°F) for HPS and -30°C (-22°F) for MH. Compact Fluorescent luminaires feature electronic universal 120-277V high efficient 50/60Hz ballast with -18°C (0°F) minimum starting.

E ... Door

Die-cast door features, 1/8" heat- and impact-resistant clear tempered glass lens mounted with internal plated steel clips and sealed with EPDM gasketing. Hinged door secured in place via two (2) captive fasteners.

F ... Finish

Durable polyester powder coat finish. Standard color is bronze. Optional white and black colors available. Other finish colors available. Consult your Cooper Lighting Representative concerning special color requirements.



IP IMPACT TRAPEZOID

50 - 175W
High Pressure Sodium
Metal Halide
26 - 52W
Compact Fluorescent

FULL CUTOFF
WALL MOUNT LUMINAIRE

TECHNICAL DATA

25°C Maximum Ambient Temperature
External Supply Wiring 90°C Minimum
Down Mounted--Wet Location
Up Mounted--Damp Location

ENERGY DATA

High Reactance Ballast Input Watts

50W HPS HPF (66 Watts)
50W MH HPF (72 Watts)
70W HPS HPF (91 Watts)
70W MH HPF (90 Watts)
100W HPS HPF (130 Watts)
100W MH HPF (129 Watts)
150W HPS HPF (190 Watts)
150W MH HPF (185 Watts)

CWA Ballast Input Watts

175W MH HPF (210 Watts)

Electronic Ballast Input Watts

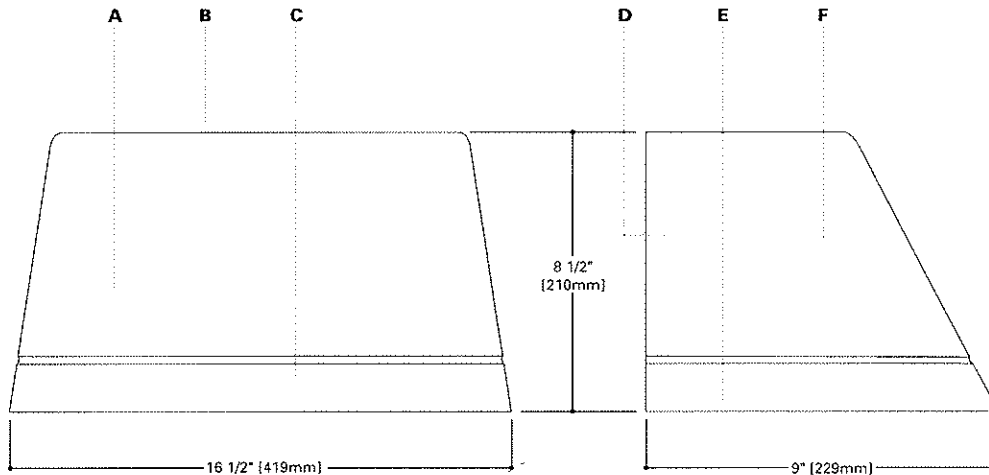
26W PL HPF (29 Watts)
32W PL HPF (36 Watts)
42W PL HPF (46 Watts)
52W PL HPF (55 Watts)

SHIPPING DATA

Approximate Net Weight:
18 lbs. (8 kgs.)



IMPACT™
Cutoff Wall Luminaires

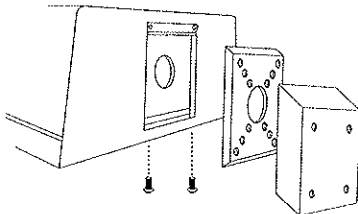


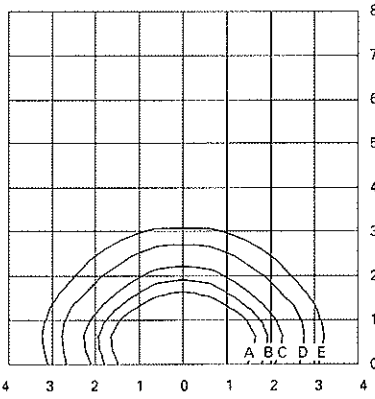
**DARK SKY
COMPLIANT** FCO
Full Cutoff

In downlight applications only.

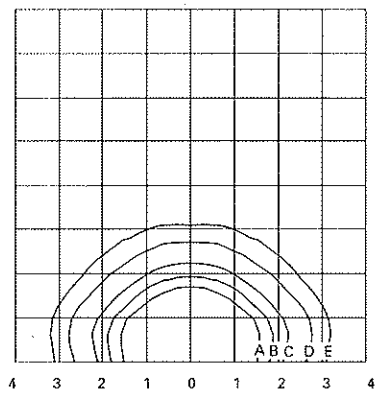
HOOK-N-LOCK MOUNTING

(Mounting attachment included. J-Box not included.)





MHIP-T-175-MT-LL
175-Watt MH
14,000-Lumen Clear Lamp



HP1P-T-150-MT-LL
150-Watt HPS
16,000-Lumen Clear Lamp

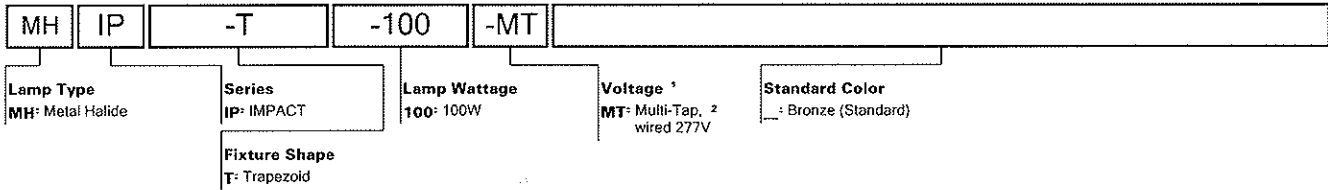
Footcandle Table

Select mounting height and read across for footcandle values of each isofootcandle line. Distance in units of mounting height.

Mounting Height	Footcandle Values for Isofootcandle Lines				
	A	B	C	D	E
10'	4.50	2.25	1.13	0.45	0.23
15'	2.00	1.00	0.50	0.20	0.10
20'	1.12	0.56	0.28	0.11	0.06

ORDERING INFORMATION

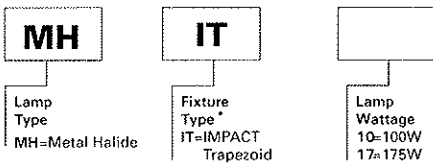
MHIP-T-100-MT



- Notes: 1 Products also available in non-US voltages and 50HZ for international markets.
 2 Multi-Tap ballast 120/208/240/277V wired 277V.
 3 Add as suffix in the order shown.

STOCK SAMPLE NUMBER (Lamp Included)

SAMPLE NUMBER: MHIT17



NOTES: Options not available with stock products. Order Accessories as separate items for field installation. Refer to standard ordering information to add options and accessories.
 * Painted bronze. Supplied with lamp and Multi-Tap HPF ballast wired 277V.

DESCRIPTION

A low brightness 7" aperture recessed downlight for use with Metal Halide or HPS lamps. Albalite lens provides diffuse lighting for general downlight applications. Glare free, low-brightness downlight effectively and economically distributes controlled illumination with glass fresnel lens or drop opal lens. Socket cap adjusts for high or low settings, providing normal or wide distribution. Excellent choice for average height ceiling areas. Lens and lens frame provide a clean, uncluttered ceiling appearance. Different fixture types allow a variety of lamp types and wattages to be utilized.

SPECIFICATION FEATURES

A---Reflector

.040 spun aluminum with anodized finish. Choice of Albalite, Drop Opal or Fresnel lens.

B---Trim Ring

High impact polymer with satin white finish.

C---Socket Cap

Heat dissipating die-cast .080 aluminum. Adjusts and locks without tools for normal and wide beam distributions.

D---Plaster Frame

Precision die stamped steel frame. Bar Hanger brackets on four sides. Trim supports adjust

to accommodate ceiling materials up to 1 1/2" thick.

E---Bar Hangers

Two piece bar hangers accommodate joist spacing up to 24". Bar hangers can be repositioned 90° to simplify clearance for wiring.

F---Conduit Fittings

Die-cast screw tight connectors.

G---Junction Box

U.L. listed for four in, four out #12 at 75°C pull through branch wiring. Positioned on ballast mounting bracket to allow straight conduit runs. Knockouts for eight 1/2" and one 3/4"

conduits. Access to junction box by removing reflector.

H---Socket

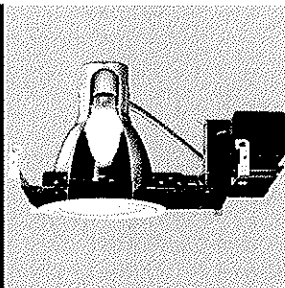
Medium base porcelain socket with nickel plated screw shell (Shipped with ballast).

I---Ballast

Quick mount plug-in ballast with dual tap for 120/277V. Ballast secures to mounting frame with spring lock.

Labels

U.L. Listed, CSA Certified, standard damp label.



M700T-610S
M700T-620S
M700T-630S
M700T-638S
M700T-640S
M700T-648S
M700T-720S
M700T-730S
M700T-738S
M700T-740S
M700T-748S

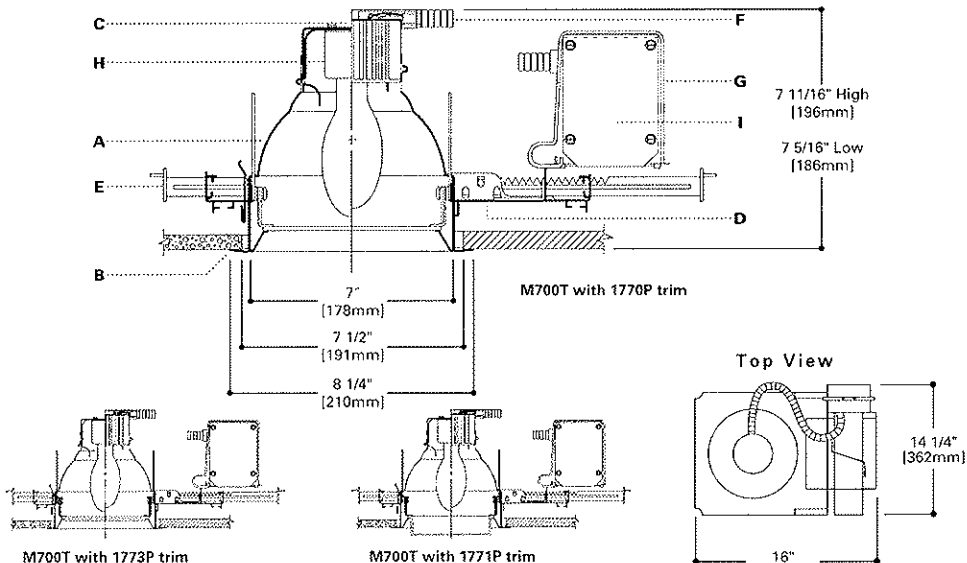
35W - 100W
 HPS
100W
 Metal Halide

7" DOWNLIGHT

ALBALITE LENS
DROP OPAL LENS
FRESNEL LENS

ENERGY DATA



100W Metal Halide
 Input Watts: 125
 Operating/Starting Current:
 120V=1.10/2.20
 277V=0.5/1.00
 Nominal Open Circuit Voltage=
 250 to 277
 High Power Factor



ORDERING INFORMATION

SAMPLE NUMBER: M700T 610SF 1770P

Complete unit consists of housing, ballast and trim.

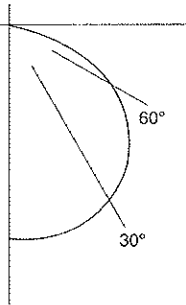
Housing	Ballast	Options	Trims	Accessories (Order Separately)
M700T	610S=35W HPS (120V) 620S=50W HPS (120/277V) 630S=70W HPS (120/277V) 638S=70W HPS (120/347V) 640S=100W HPS (120/277V) 648S=100W HPS (120/347V) 720S=50W MH (120/277V) 730S=70W MH (120/277V) 738S=70W MH (120/347V) 740S=100W MH (120/277V) 748S=100W MH (120/347V)	F=Fuse Q=Quartz Standby Light (100W max.)	 Lens and Diffusers 1770P=White Albalite Lens  1773P=White Fresnel Lens	1 1/2" C Channel Bar Hangers HB26=26" Long HB50=50" Long

NOTES: Accessories should be ordered separately. For additional options please consult your Cooper Lighting Representative. Alzak® is a registered trademark of Aluminum Company of America.

PHOTOMETRICS

Candlepower Distribution

Test No. E428-374
M700T-740S-1770P
 7 1/2" Albalite Lens Trim
 Lamp=LU70/D/MED
 Lumens=5400
 Spacing
 Criterion=1.3
 Efficiency=38.3%



Candlepower

Deg.	CD
0	789
5	788
10	786
15	778
20	762
25	733
30	691
35	636
40	573
45	502
50	431
55	360
60	291
65	226

Cone of Light

Distance to Illuminated Plane	Initial Nadir Footcandles	Beam Diameter
7:0"	39	5:6"
9:6"	19	7:6"
12:0"	11	9:6"
15:0"	7	11:6"
17:0"	5	13:6"
20:0"	4	15:6"

Beam diameter is to 50% of maximum footcandles, rounded to the nearest half-foot.
 Footcandle values are initial, apply appropriate light loss factors where necessary.

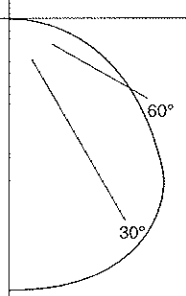
Coefficient of Utilization

rc	80%		70%		50%	
	rw	30	50	30	50	30
RCR						
0	46	46	45	45	43	43
1	40	39	40	38	38	37
2	36	33	35	33	34	32
3	31	29	31	28	30	27
4	28	25	28	25	27	24
5	25	22	25	22	24	21
6	23	19	22	19	22	19
7	21	17	20	17	20	17
8	19	16	19	16	18	15
9	17	14	17	14	17	14
10	15	13	16	13	15	13

rc=Ceiling reflectance, rw=Wall reflectance, RCR=Room cavity ratio . CU Data Based on 20% Effective Floor Cavity Reflectance.

Candlepower Distribution

Test No. E428-378
M700T-540S-1770P
 7 1/2" Albalite Lens Trim
 Lamp=M100/C/MED
 Lumens=8000
 Spacing
 Criterion=1.3
 Efficiency=33.5%



Candlepower

Deg.	CD
0	995
5	992
10	986
15	976
20	959
25	931
30	888
35	824
40	745
45	655
50	561
55	469
60	380
65	294

Cone of Light

Distance to Illuminated Plane	Initial Nadir Footcandles	Beam Diameter
7:0"	49	5:6"
10:0"	24	7:6"
12:6"	14	9:6"
15:0"	9	11:6"
17:6"	6	13:6"
20:0"	5	15:6"

Beam diameter is to 50% of maximum footcandles, rounded to the nearest half-foot.
 Footcandle values are initial, apply appropriate light loss factors where necessary.

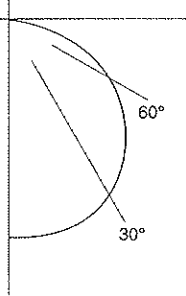
Coefficient of Utilization

rc	80%		70%		50%	
	rw	30	50	30	50	30
RCR						
0	40	40	39	39	37	37
1	35	34	35	33	33	32
2	31	29	30	28	29	28
3	27	25	27	24	26	24
4	24	22	24	21	23	21
5	22	19	21	19	21	18
6	20	17	19	17	19	16
7	18	15	18	15	17	15
8	16	14	16	13	16	13
9	15	12	15	12	14	12
10	14	11	14	11	13	11

rc=Ceiling reflectance, rw=Wall reflectance, RCR=Room cavity ratio . CU Data Based on 20% Effective Floor Cavity Reflectance.

Candlepower Distribution

Test No. E428-392
M700T-540S-1771P
 7" Drop Opal Trim
 Lamp=LU70/D/MED
 Lumens=5400
 Spacing
 Criterion=1.3
 Efficiency=46%



Candlepower

Deg.	CD
0	790
5	786
10	777
15	762
20	742
25	716
30	685
35	648
40	604
45	555
50	500
55	443
60	382
65	319

Cone of Light

Distance to Illuminated Plane	Initial Nadir Footcandles	Beam Diameter
7:0"	39	5:6"
10:0"	19	7:6"
12:6"	11	9:6"
15:0"	7	11:6"
17:6"	5	13:6"
20:0"	4	15:6"

Beam diameter is to 50% of maximum footcandles, rounded to the nearest half-foot.
 Footcandle values are initial, apply appropriate light loss factors where necessary.

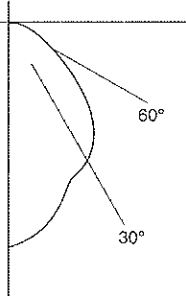
Coefficient of Utilization

rc	80%		70%		50%	
	rw	30	50	30	50	30
RCR						
0	55	55	53	53	51	51
1	47	45	46	44	44	42
2	41	37	40	37	38	36
3	36	32	35	31	33	30
4	31	27	31	27	30	26
5	28	24	27	23	26	23
6	25	21	25	21	24	20
7	23	19	22	18	22	18
8	21	17	20	17	20	16
9	19	15	19	15	18	15
10	18	14	17	14	17	14

rc=Ceiling reflectance, rw=Wall reflectance, RCR=Room cavity ratio . CU Data Based on 20% Effective Floor Cavity Reflectance.

Candlepower Distribution

Test No. E428-415
M700T-630S-1773P
 7" Fresnel Lens Trim
 Lamp=LU70/D/MED
 Lumens=5400
 Spacing
 Criterion=1.0
 Efficiency=46.7%



Candlepower

Deg.	CD
0	1618
5	1558
10	1429
15	1290
20	1181
25	1128
30	1020
35	838
40	659
45	514
50	403
55	317
60	244
65	186

Cone of Light

Distance to Illuminated Plane	Initial Nadir Footcandles	Beam Diameter
5:6"	80	5:6"
7:0"	38	7:6"
9:0"	22	9:6"
11:0"	15	11:6"
13:0"	10	13:6"
15:0"	8	15:6"

Beam diameter is to 50% of maximum footcandles, rounded to the nearest half-foot.
 Footcandle values are initial, apply appropriate light loss factors where necessary.

Coefficient of Utilization

rc	80%		70%		50%	
	rw	30	50	30	50	30
RCR						
0	56	56	54	54	52	52
1	50	48	49	47	47	46
2	45	42	44	41	42	40
3	40	37	39	36	38	35
4	36	33	36	32	34	32
5	33	29	32	29	31	28
6	30	26	30	26	29	26
7	28	24	27	24	27	23
8	25	22	25	22	25	22
9	24	20	23	20	23	20
10	22	19	22	19	21	18

rc=Ceiling reflectance, rw=Wall reflectance, RCR=Room cavity ratio . CU Data Based on 20% Effective Floor Cavity Reflectance.

Note: Specifications and Dimensions subject to change without notice.

Visit our web site at www.cooperlighting.com



Customer First Center 1121 Highway 74 South Peachtree City, GA 30269 770.486.4800 FAX 770.486.4801 ADV023168
 Cooper Lighting 5925 McLaughlin Rd. Mississauga, Ontario, Canada L5R 1B8 905.507.4000 FAX 905.568.7049