

"Cheerio"

*"Stay, little cheerful Robin! stay,
And at my casement sing..."*

-William Woodsworth



Narrative for "Cheerio"

When I was kid, we learned about the Robin, and how it was our state bird, how it didn't migrate but stayed through all the seasons in and around Madison, rain or shine, cold or heat. We also spent time learning how to identify the robin and other birds by the bird calls. Identifying bird calls is something we still do as a family during the summers. Last January we were in London, and my son said, "Hey they sound just like Robins!" Cheerio! Cheerio! Cheerio! He was right, the common hello and goodbye of our friends sounds similar to the calls of the Robins we would encounter back in Madison.

When Lesley and I were beginning to work on the depot art concept, this story resurfaced and put a smile on both of our faces. So we thought, what if we were to build the state bird welcoming visitors to the state capitol in a way that made people smile as they entered the garage? The area is large enough, and if we design and engineer them right, we could build two Robins (one at either end of the bus entry)- and maybe even set of those beautiful and distinctive Robin's eggs as seating inside? So this is the sculptural concept we worked on, called "Cheerio"

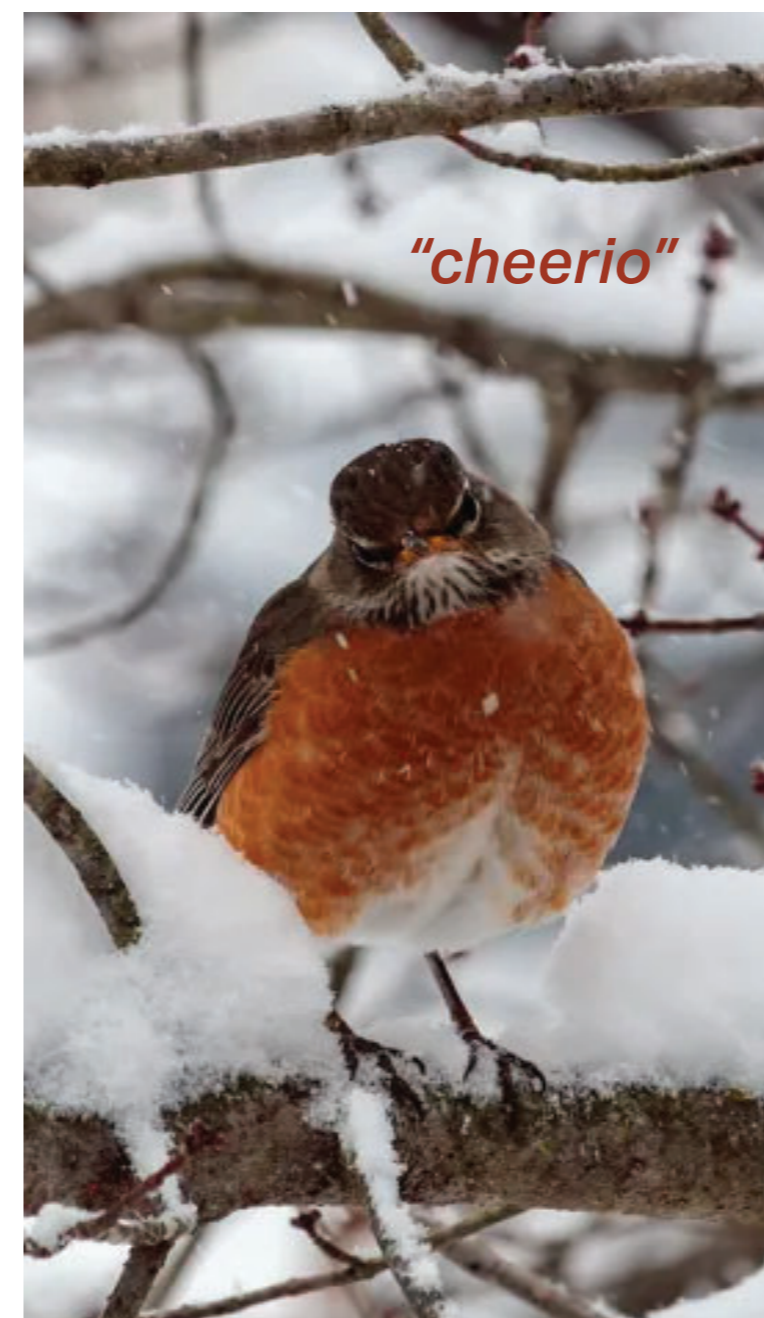
Cheerio is a sculpture that looks like 2 giant American Robins ushering in the visitors as the move past them on Hawthorne Court, into the depot. One Robin sits looking out at the front of Hawthorne as pedestrian and vehicular traffic flows into the site, while the other looks towards where the buses are going, near the egress tower. Within the depot three tiffany blue robin's eggs create seating for people waiting for the buses to arrive/depart.



Summer



Fall



Winter



Spring

LOCATION

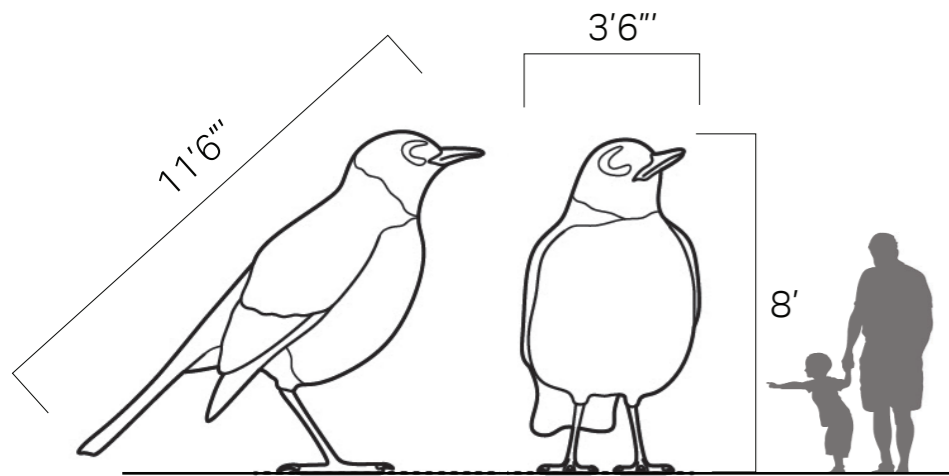
Cheerio

Cheerio is a sculpture that is built in three parts and meant to be a welcoming reveal as visitors enter Hawthorne and the depot.

The first "Robin" sits on a perch at the entry to Hawthorne and looks to be peeking around the corner at the incoming traffic- a tentative "Hello".

The second "Robin" is comfortably seated at the second vertical egress of the parking garage and the bus entrance to the depot- it's beak pointing the general direction vehicular traffic should flow.

The third robin is a trio of "Robin's eggs" that double as seating inside the depot itself.



Scale



Cheerio

State Street Campus Garage Public Art Concepts

February 17, 2026

STUDIOKCA

Studio Klimoski Chang

FORMAL DIRECTION

Cheerio

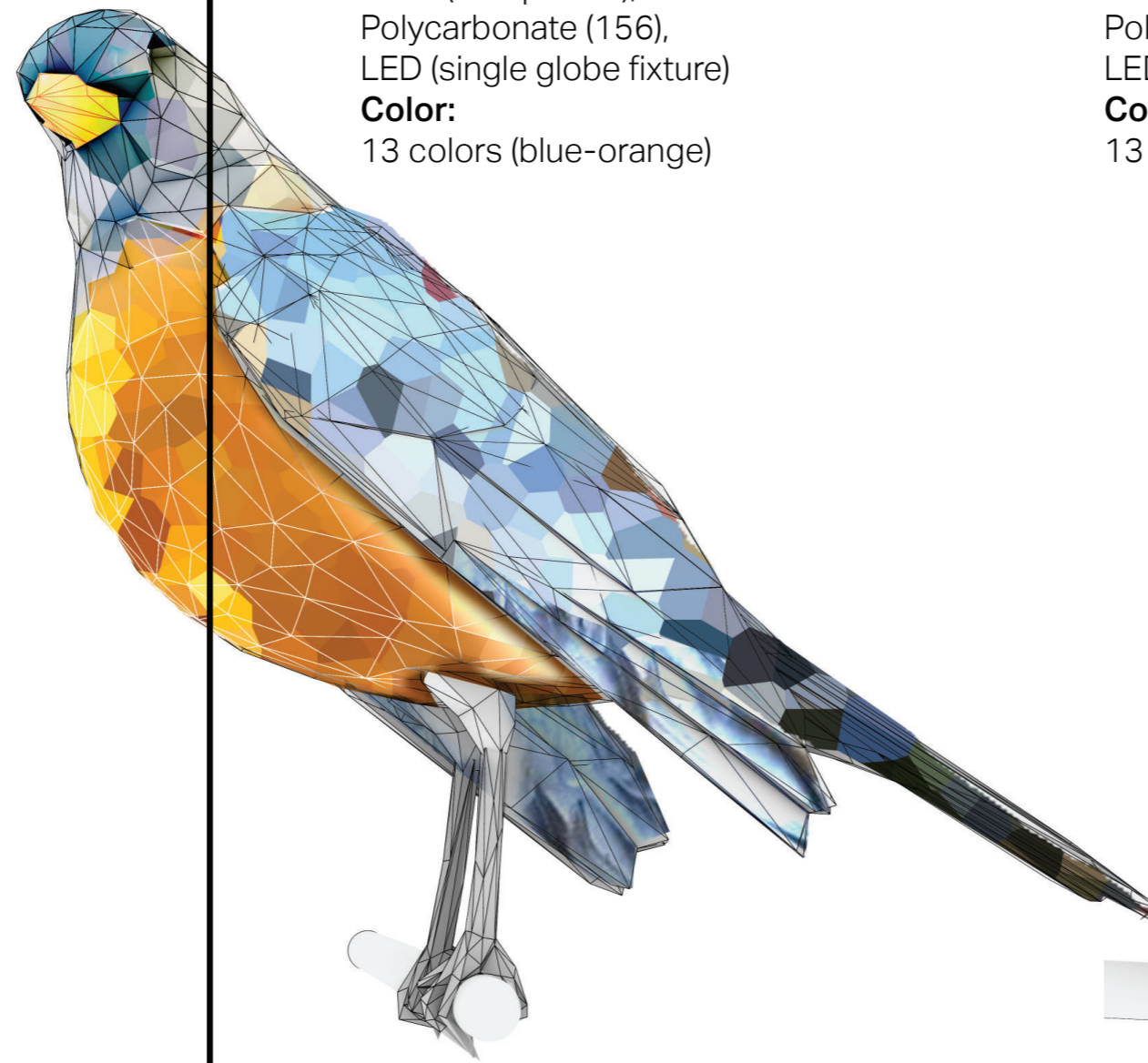
The "Robins" are scaled to approximately 15x the size of an actual robin. The first Robin is approximately 25' up in the air and positioned as if it is looking around the corner at incoming traffic. The second Robin, sits above where the buses turn in, and looks as if settling in for a nap. The last three Robins are still in their eggs, and provide a place for visitors to perch while waiting for the buses.

Fabrication and construction methodology: Robins are created through a stainless steel armature and an exterior surface made from 16 gauge Stainless Steel. The Chest of each robin is made from approximately 175 red translucent polycarbonate panels so that when the internal LED fixture is turned on, the red breast of the Robin glows red with hints of white along the wings (Red+White)

Each Robin has a light (airplane-like) internal structure welded to an 8" structural tube that is mounted via anchors to the egress tower's structure.



Construction Methodology tested and resolved on two pieces currently in Production (*Star* for Boston Children's Hospital, and *Forest Stories* for the city of Burlington, Vermont)



ROBIN 2 (Summer)

ROBIN 2 (Summer)

Dimensions:

Height: 11' (standing)
Width: 15'3" (Wingspan)
Length (tip tot tail): 11'6"
Body Width: 3'6"
Weight: 232 lbs

Materials:

Steel (982 panels),
Polycarbonate (156),
LED (single globe fixture)

Color:

13 colors (blue-orange)

ROBIN 3 (Winter)

Dimensions:

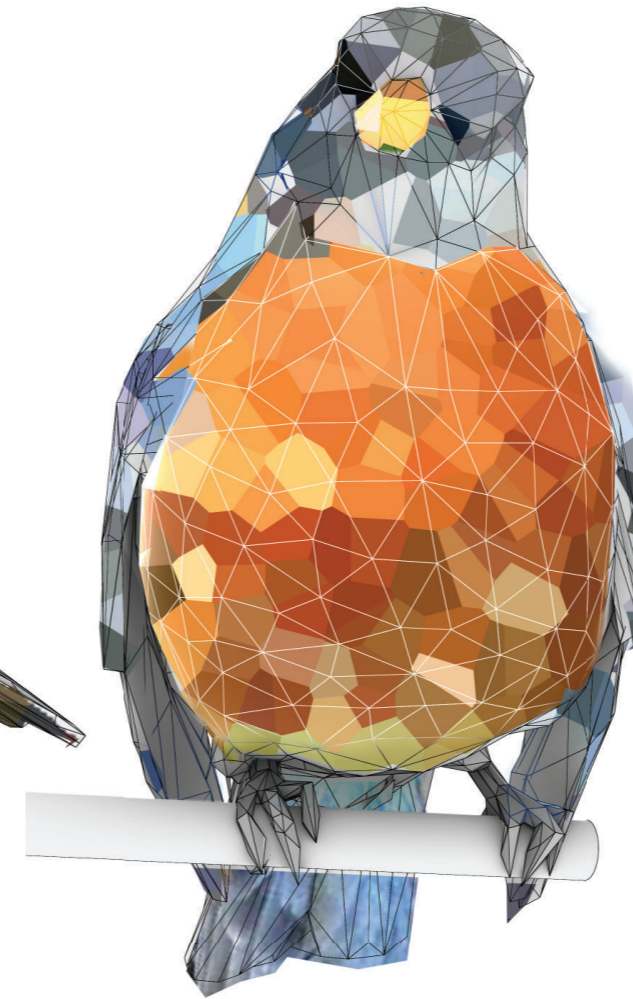
Height: 9' (sitting)
Width: 15'3" (Wingspan)
Length (tip tot tail): 11'6"
Body Width: 5'8"
Weight: 206 lbs

Materials:

Steel (973 panels),
Polycarbonate (166),
LED (single globe fixture)

Color:

13 colors (blue-orange)



ROBIN 3 (WINTER)

Robin 1,2,&3 (Spring)

Dimensions:

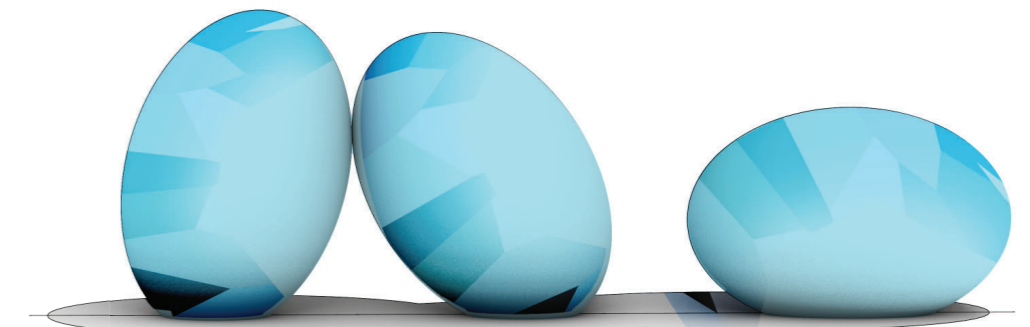
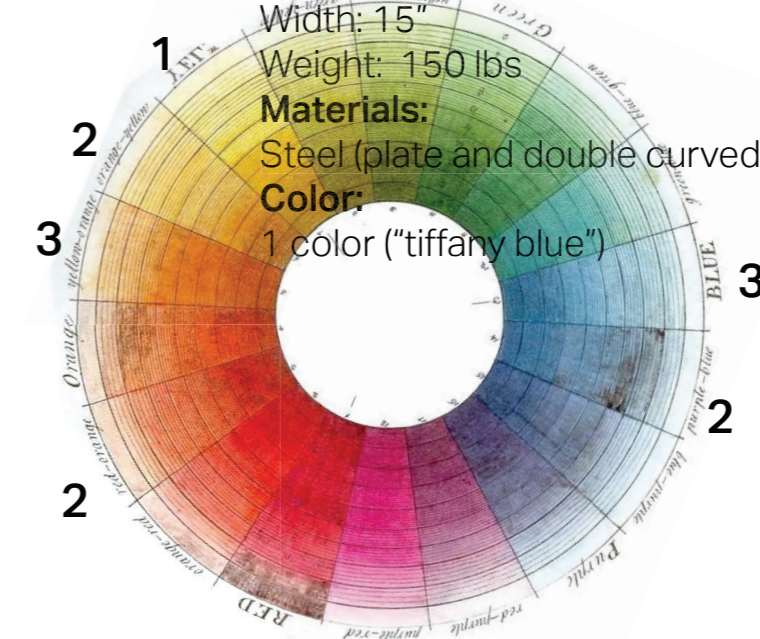
Height: approximately 16"
Length: 50"
Width: 15"
Weight: 150 lbs

Materials:

Steel (plate and double curved panels),

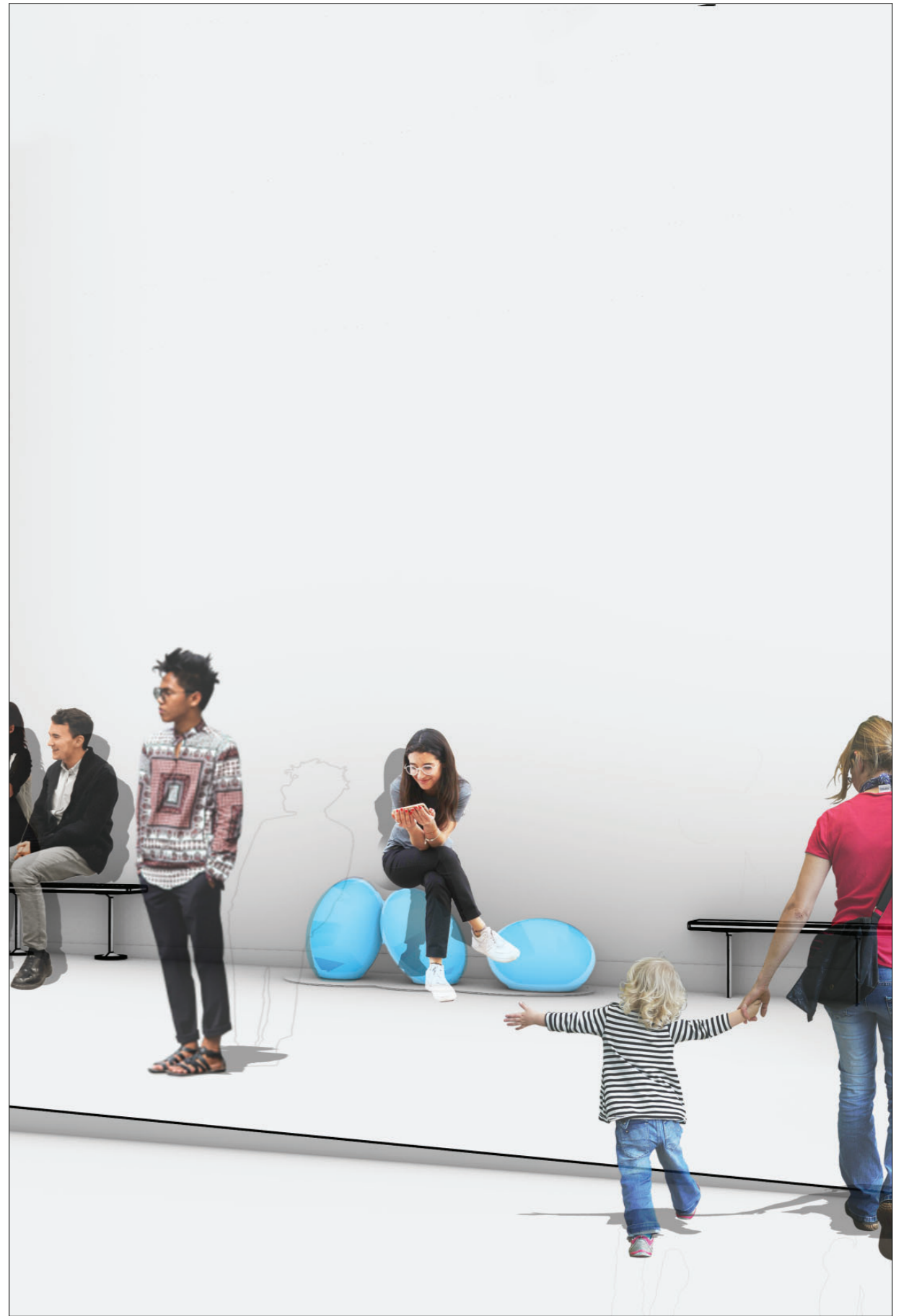
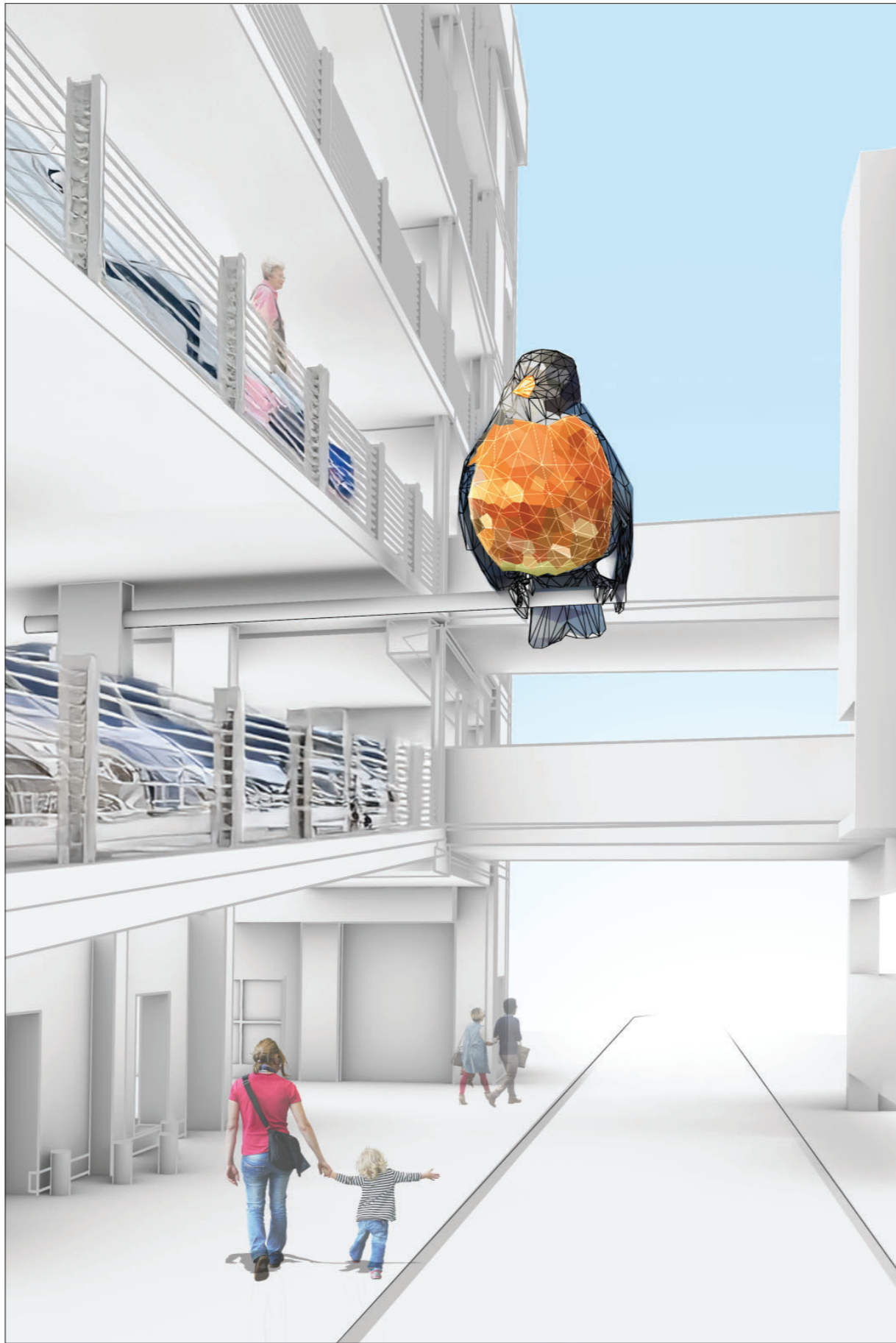
Color:

1 color ("tiffany blue")



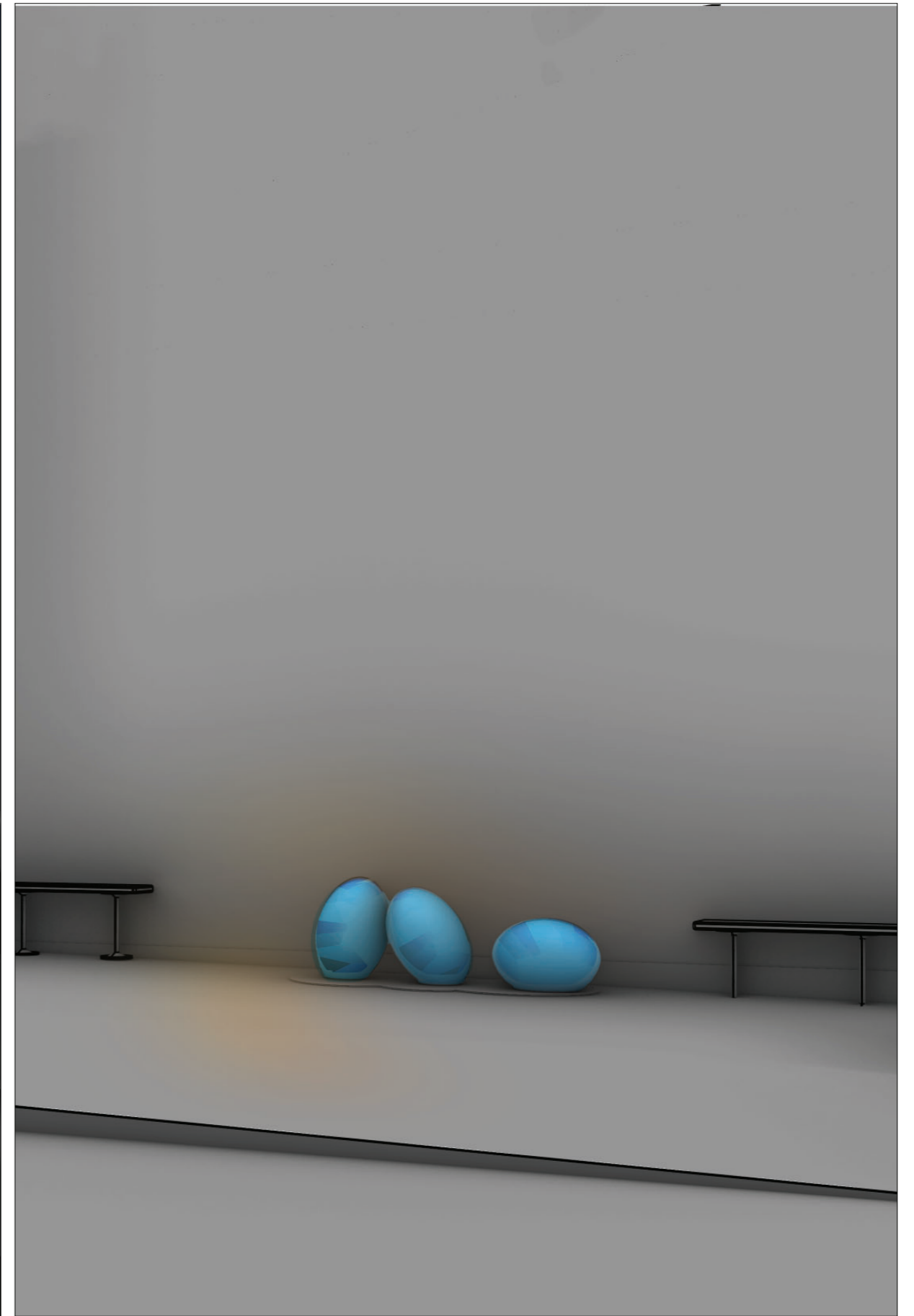
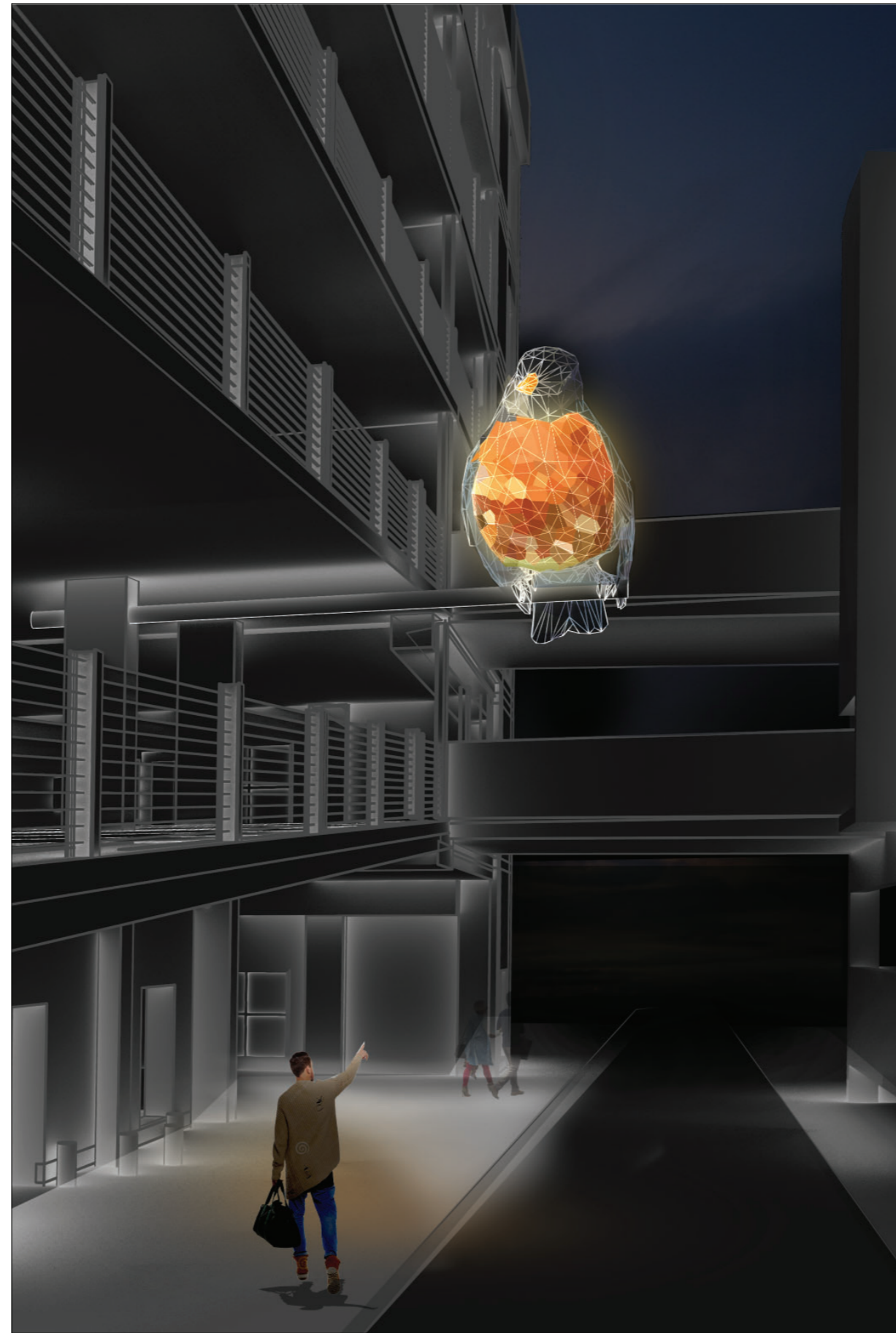
ROBIN 1, 2, and 3 (SPRING)

RENDERING
Cheerio (day)



Cheerio
State Street Campus Garage Public Art Concepts
February 17, 2026

RENDERING
Cheerio (night)



Cheerio
State Street Campus Garage Public Art Concepts
February 17, 2026

PRELIMINARY BUDGET+SCHEDULE+NARRATIVE

NARRATIVE:

Cheerio is a sculpture that creates 2 city-sized, sculptural versions of the American Robin, Wisconsin's State bird perched on Hawthorne to help in way-finding as well as to "greet" bus and pedestrians entering the depot. 3 robin's egg-shaped seating elements can be found safe and warm inside the depot. At night, the Robin's red breast glows from perforations made during construction, as do the tips of their wings.

Fabricated using a stainless steel armature, concrete anchors, polycarbonate sheets and IP65 rated LED fixtures.

The sculpture is built to withstand public interaction and Wisconsin weather. Anticipated maintenance is periodic replacement of LED fixtures (every 10 years), periodic cleaning, and yearly inspection.

PRELIMINARY SCULPTURE BUDGET:

- DESIGN+ENGINEERING \$32,000
(Includes presentation, community engagement, artist fees)
- FABRICATION: \$218,000
(includes transportation ,insurance, stainless steel+polycarbonate construction, Duranar/sim paint/finish)
- LIGHTING: \$15,000
(internally lit with LED fixtures)
- INSTALLATION: \$50,000
- CONTINGENCY: \$5,000

NOTE: permits, if necessary, are not included in preliminary budget

PRELIMINARY SCHEDULE

- Design Development/Construction/
Fabrication Drawings: 3-5 months
- Fabrication: 5-6 months
- Installation of footing/connection posts (1-2 days)
- Installation of Sculpture: 5 days





Jason Klimoski

ABOUT

StudioKCA, is a diverse, multidisciplinary art and design studio based in Brooklyn, NY founded by Jason Klimoski and Lesley Chang in 2012. They are a group of architects, artists, lighting designers, and fabricators who spend their time and energy in the pursuit of building meaningful objects and experiences for public spaces and events, with the hope that visitors are inspired to explore the world and have a positive impact on it. Their work ranges in scale and complexity from large pavilions and sculptures, to information kiosks, and even table lamps and chandeliers. Working collaboratively with clients and community leaders, they create iconic pieces that respond to their site and program requirements in thoughtful and thought provoking ways. Many of their creations explore the use of materials in unconventional ways focused on nature, science, consumption, conservation, and community. Their work has been showcased in many international magazines and television programs, and has shown in 5 countries, and 3 museums. Clients are private companies, individuals, and governments and government agencies including NASA, ESA (European Space Agency), Boston Children's Hospital in Boston, MA, Canary Wharf Group in London, England, The Freyer Newman center in Denver Colorado, Patricia Reser Center for the Performing Arts in Beaverton, Oregon, the City of Bruges Belgium, the City of Kaohsiung Taiwan, the City of Ottawa, Canada; the City of New York, the City of Oklahoma City, and the City of Olathe Kansas.

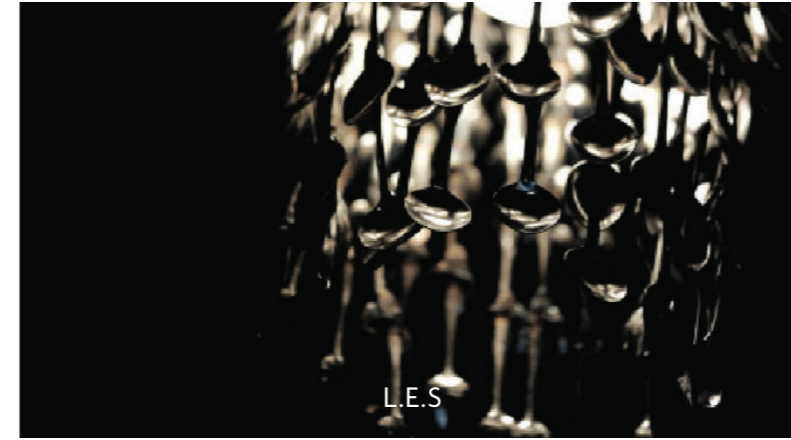
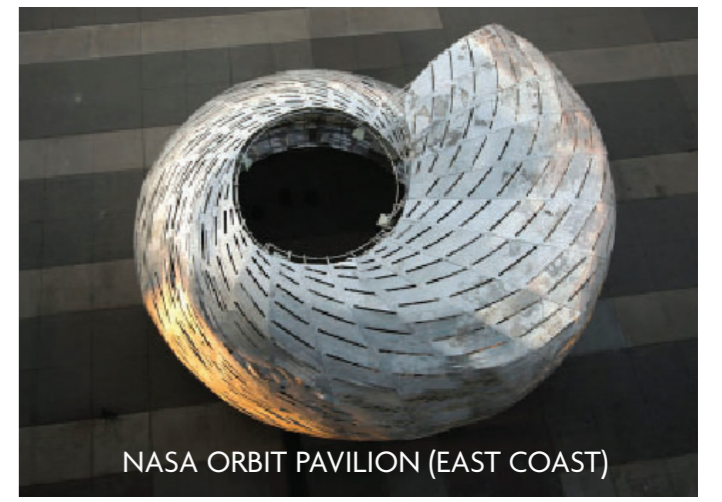
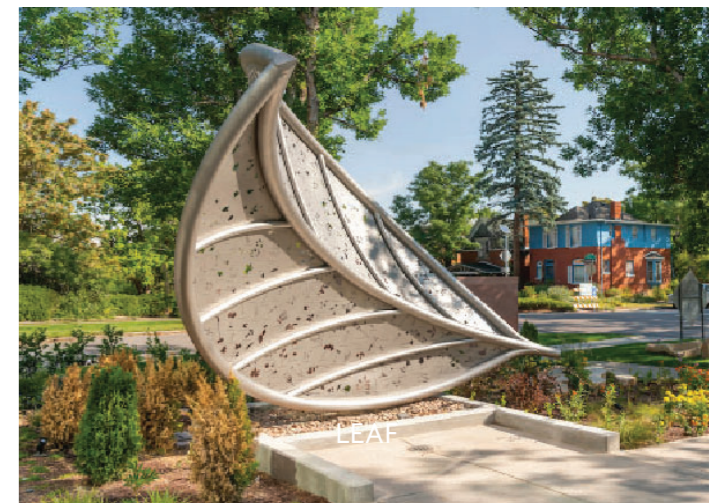
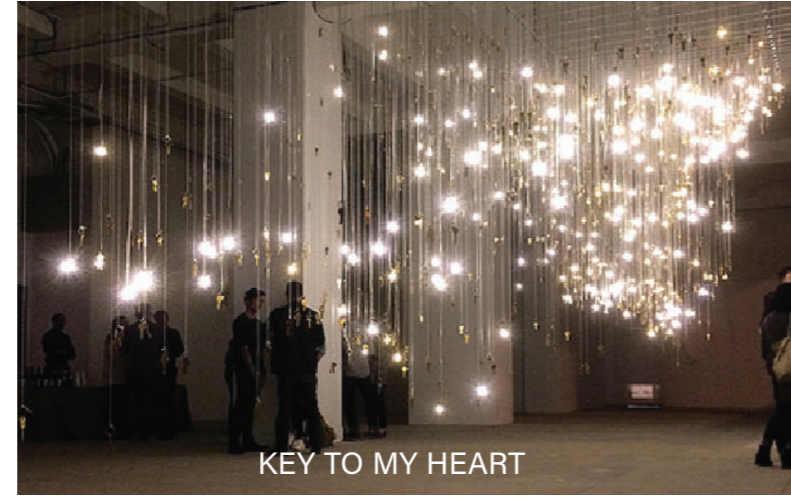
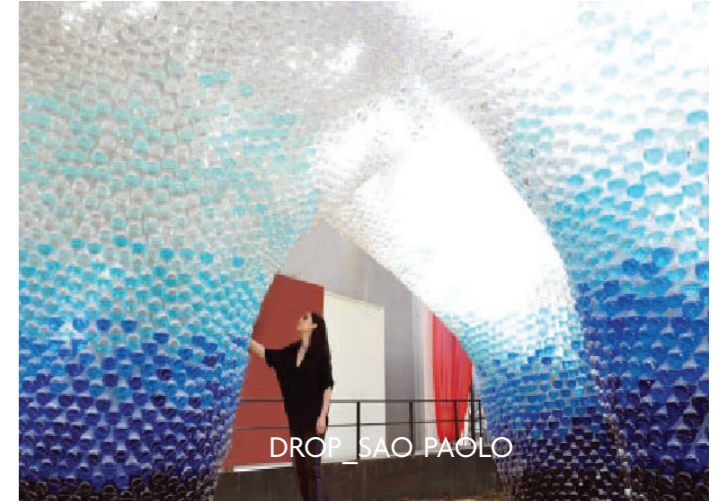


Lesley Chang

SELECT COMMISSIONED PUBLIC ART

"Tomorrow Today", Ramapo, New Jersey (2026), "Interstellar Influencer (make an impact)" Alexandria, Virginia (2025); "Whale on the Wharf", Canary Wharf, London (2025); 'First Impressions', Town Branch Park, Lexington, KY (2025); "Star", Boston, MA (2025-Forthcoming); "Forest Stories", Burlington, VT (2025-Forthcoming); "Vanier Gateway" Ottawa, Canada (2024) "Upon Reflection", Toledo, Ohio (2023); 'Taking Flight', City of Oklahoma City, OK; (2022); Whale in Love, Kaohsiung, Taiwan (2020); 'Leaf', Denver Botanic Gardens Freyer-Newman Center, City of Denver, CO (2020); 'SEED', City of Olathe, KS (2019); 'Night and Day', City of Hopkins, MN (2018); 'Skyscraper (the Bruges Whale)', City of Bruges, Belgium (2018); 'NASA Orbit Pavilion', The Huntington Library, Art Collection, and Botanical Gardens, San Marino, CA (2016); 'Firefly', The Gray Hotel, Chicago, IL, 'NASA Orbit Pavilion', Intrepid Sea, Air and Space Museum, New York, NY (2015); 'NASA Orbit Pavilion', New York University, New York, NY (2015); 'Metamorphosis', The Exploratorium Museum, San Francisco, CA (2015); 'Key to My Heart', 120 Wall Street, New York, NY (2014); 'A Comet Lands in Brooklyn (Rosetta)', Brooklyn Bridge Park, Brooklyn, NY (2014); 'Drop', Jockey Club, Sao Paulo, Brazil (2014); 'Head in the Clouds', Governors Island, New York, NY (2013).

Link to digital portfolio: www.studiokca.com



STUDIOKCA

THE BRUGES WHALE

NASA ORBIT PAVILION (WEST COAST)

RIBBON

DROP - SAO PAULO

KEY TO MY HEART

SEED

UPON REFLECTION

LEAF

INTERSTELLAR INFLUENCER

LIGHT AS A FEATHER

A COMET LANDS IN BROOKLYN

NASA ORBIT PAVILION (EAST COAST)

EVERY CLOUD

L.E.S

ISOBEL IN THE GARDEN

Tomorrow Today

FIREFLY