

CERTIFIED SURVEY MAP No.

PART OF BLOCK 12, PLAT OF WINGRA, RECORDED IN VOLUME 4 OF PLATS, PAGE 38, AS DOCUMENT NUMBER 295618, DANE COUNTY REGISTRY, AND PART OF NORTHEAST QUARTER OF SECTION 28, TOWNSHIP 07 NORTH, RANGE 09 EAST, CITY OF MADISON, DANE COUNTY, WISCONSIN.

0 60 120 180



SCALE : ONE INCH = SIXTY FEET

LEGEND

- X FOUND CHISELED CROSS
- FOUND SOLID IRON ROD (SIZE NOTED)
- ⊙ FOUND IRON PIPE (OUTSIDE DIAMETER NOTED)
- SET 3/4" X 18" SOLID IRON ROD, WT. 1.50 LB/FT ("W/CAP" = RED PLASTIC CAP)
- ⊙ SET P.K. NAIL
- ↖ DRAINAGE ARROW (SEE NOTE 4 ON SHEET 4)
- 17.0' GROUND ELEVATION (SEE NOTE 4 ON SHEET 4)
- () INDICATES RECORDED AS DISTANCES MEASURED TO THE NEAREST 0.01 FOOT.

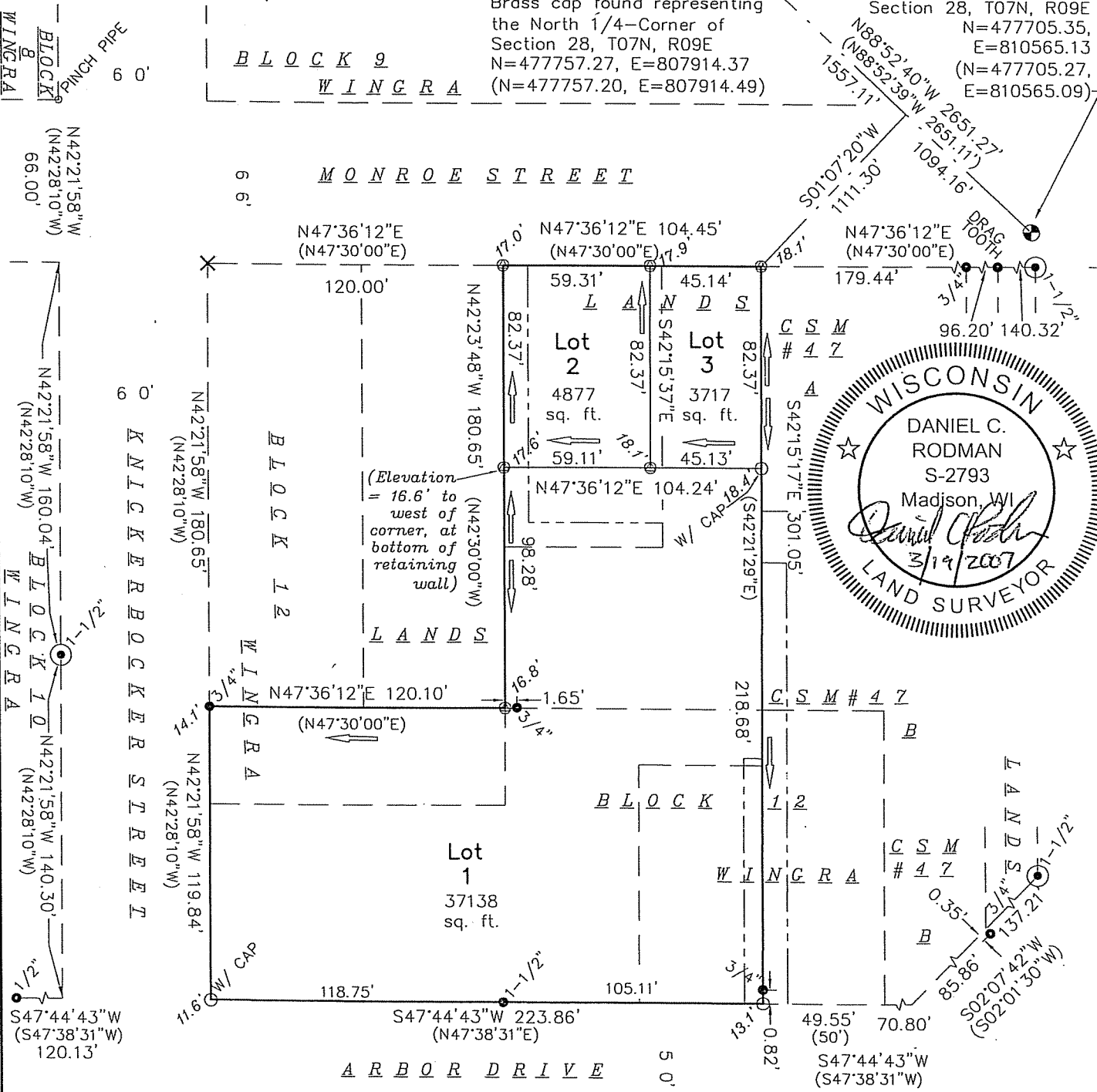
NOTES:

1. See building detail on Sheet 2.
2. See easement detail on Sheet 3.
3. See additional notes on Sheet 4.
4. See note 3 on Sheet 4 for coordinate system details.

GRID NORTH
WISCONSIN COUNTY
COORDINATE SYSTEM, DANE
ZONE, NAD83(97) DATUM

Brass cap in water box found representing the Northeast Corner of Section 28, T07N, R09E
N=477705.35, E=810565.13
(N=477705.27, E=810565.09)

Brass cap found representing the North 1/4-Corner of Section 28, T07N, R09E
N=477757.27, E=807914.37
(N=477757.20, E=807914.49)



Burse