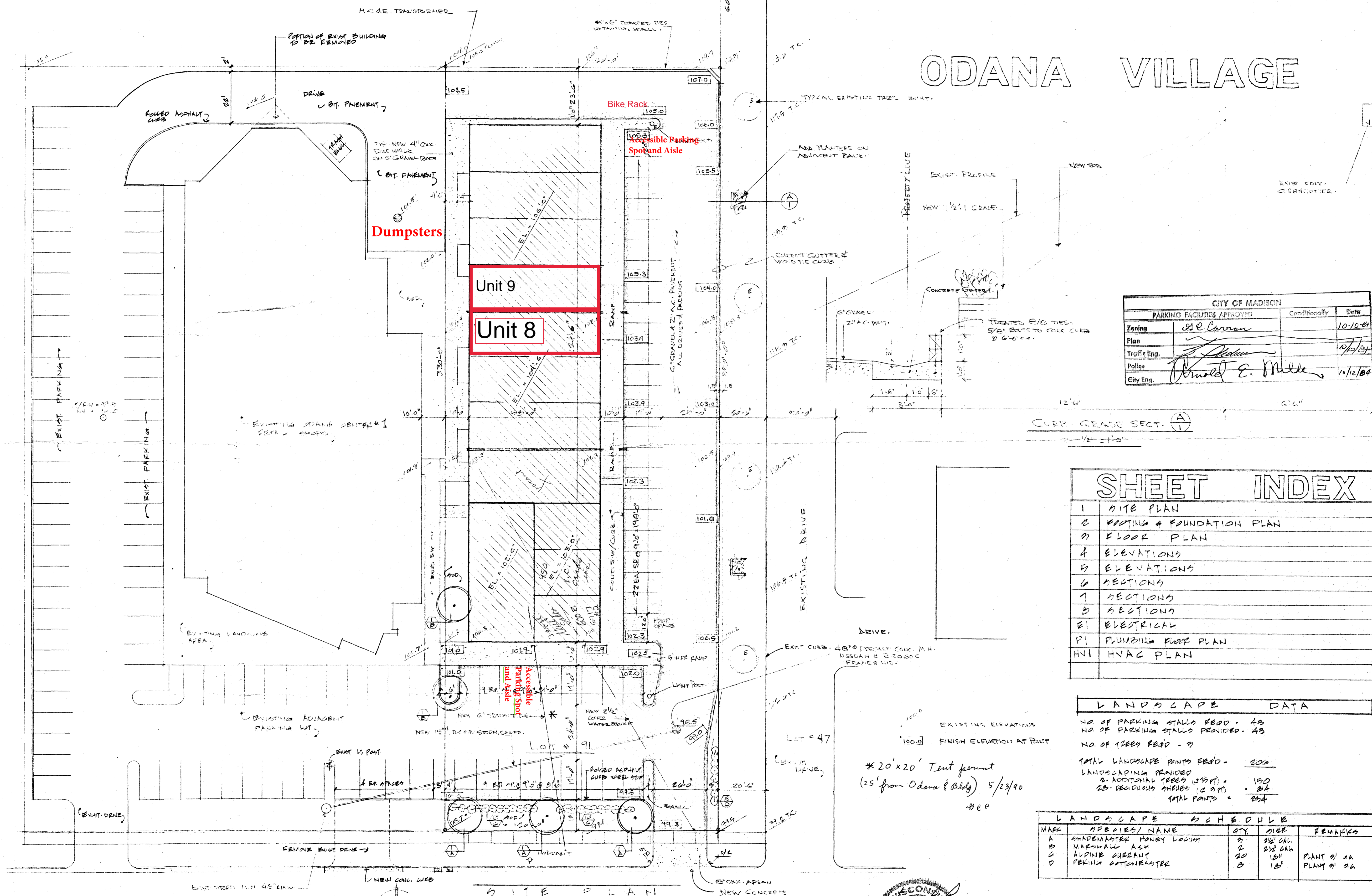


ODANA VILLAGE



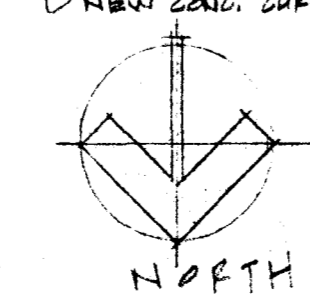
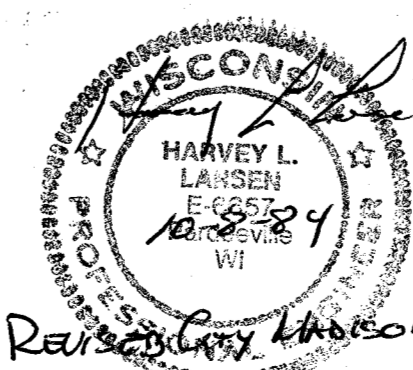
CITY OF MADISON		
PARKING FACILITIES APPROVED		
Zoning	Conditionally	Date
SE-Corridor		10/10/84
Plan		10/10/84
Traffic Eng.		10/10/84
Police		10/10/84
City Eng.		10/10/84

SHEET INDEX	
1	SITE PLAN
2	FOOTING & FOUNDATION PLAN
3	FLOOR PLAN
4	ELEVATIONS
5	ELEVATIONS
6	SECTIONS
7	SECTIONS
8	SECTIONS
E1	ELECTRICAL
P1	PLUMBING RISE PLAN
HV1	HVAC PLAN

LANDSCAPE DATA	
NO. OF PARKING STALLS REQ'D	43
NO. OF PARKING STALLS PROVIDED	43
NO. OF TREES REQ'D	3
TOTAL LANDSCAPE POINTS REQ'D	200
LANDSCAPING PROVIDED	
2. ADDITIONAL TREES (315 FT.)	150
25. DECIDUOUS SHRUBS (2 FT.)	50
TOTAL POINTS	200

LANDSCAPE SCHEDULE				
MARK	SPECIES/ NAME	QTY.	SIZE	REMARKS
A	SHADEMASTER HONEY LOCUST	3	2 1/2" CAL.	
B	NORFOLK ISLE	2	2 1/2" CAL.	
C	ALPINE CURRANT	20	15"	PLANT @ 20
D	PERNIA COTTONEASTER	3	15"	PLANT @ 20

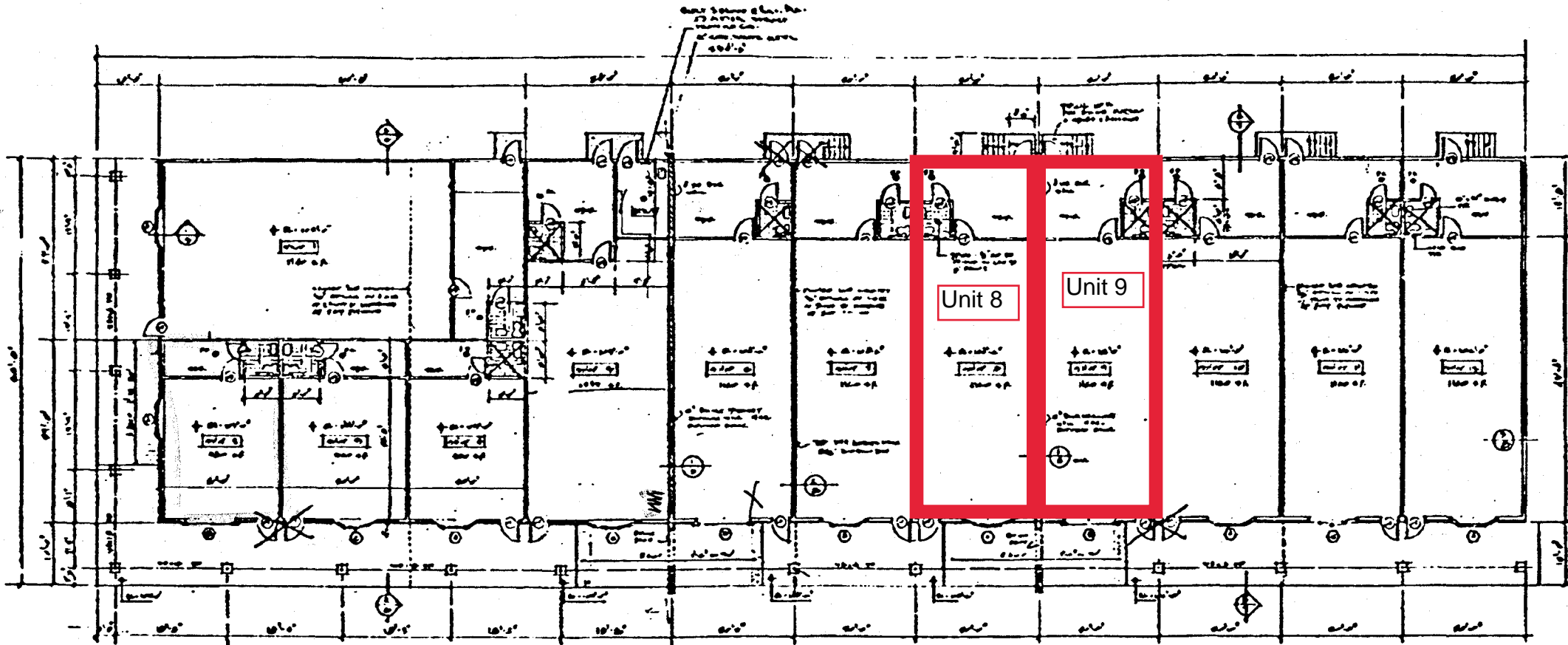
SHEET TITLE SITE PLAN	DATE 3.4.84	HARVEY LARSEN & ASSOCIATES 2032 PENNSYLVANIA AVE. MADISON, WIS. 53704 architects engineers	SHEET 1
	REV 10.1.84		
PROJECT ODANA VILLAGE ODANA ROAD MADISON, WIS.	JOB NO.		



SITE PLAN
1" = 20'-0"

ODANA ROAD

EXHIBIT A
6717 Odana Road



dh
Duane Hendrickson Realtor
Specializing in commercial and investment properties

Gilman Plaza, 520 University Avenue
Madison, Wisconsin 53703
Telephone (608) 257-4221

Fax (608) 257-2909



FLOOR PLAN
As shown

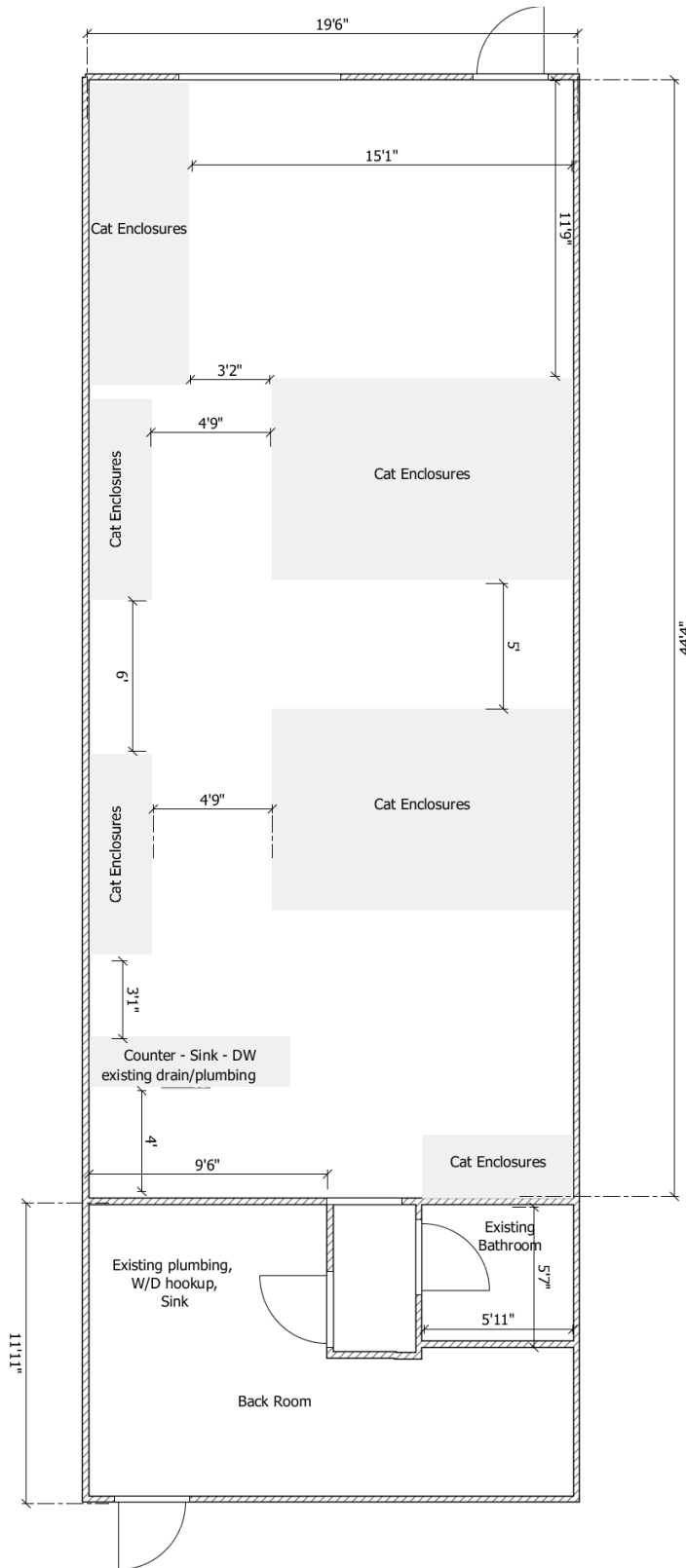
ROOM	FINISH	SCHEDULE
1st Flr. Lobby	1	1
1st Flr. Corr.	1	1
1st Flr. Elev.	1	1
1st Flr. Stair	1	1
1st Flr. Mech.	1	1
2nd Flr. Corr.	1	1
2nd Flr. Elev.	1	1
2nd Flr. Stair	1	1
2nd Flr. Mech.	1	1
3rd Flr. Corr.	1	1
3rd Flr. Elev.	1	1
3rd Flr. Stair	1	1
3rd Flr. Mech.	1	1

- ① 1/2" x 1/2" x 1/2" (1/2" x 1/2" x 1/2")
- ② 1/2" x 1/2" x 1/2" (1/2" x 1/2" x 1/2")
- ③ 1/2" x 1/2" x 1/2" (1/2" x 1/2" x 1/2")
- ④ 1/2" x 1/2" x 1/2" (1/2" x 1/2" x 1/2")

FLOOR PLAN	DATE	HARVEY LARSEN & ASSOCIATES	3
PROJECT NUMBER	NO.	1000 UNIVERSITY AVE MADISON, WISCONSIN 53703 TEL: (608) 257-4221	

6717 Odana Rd Unit #8

Floor Plan/Layout for Hotel Sisal LLC – Cat Boarding Unit 8



6717 Odana Rd Unit #9

Existing Floor Plan/Layout for Hotel Sisal LLC – Cat Boarding Unit 9

