

Glenway Golf Park
 Conceptual Master Plan
 March 5, 2021

SITE PLAN

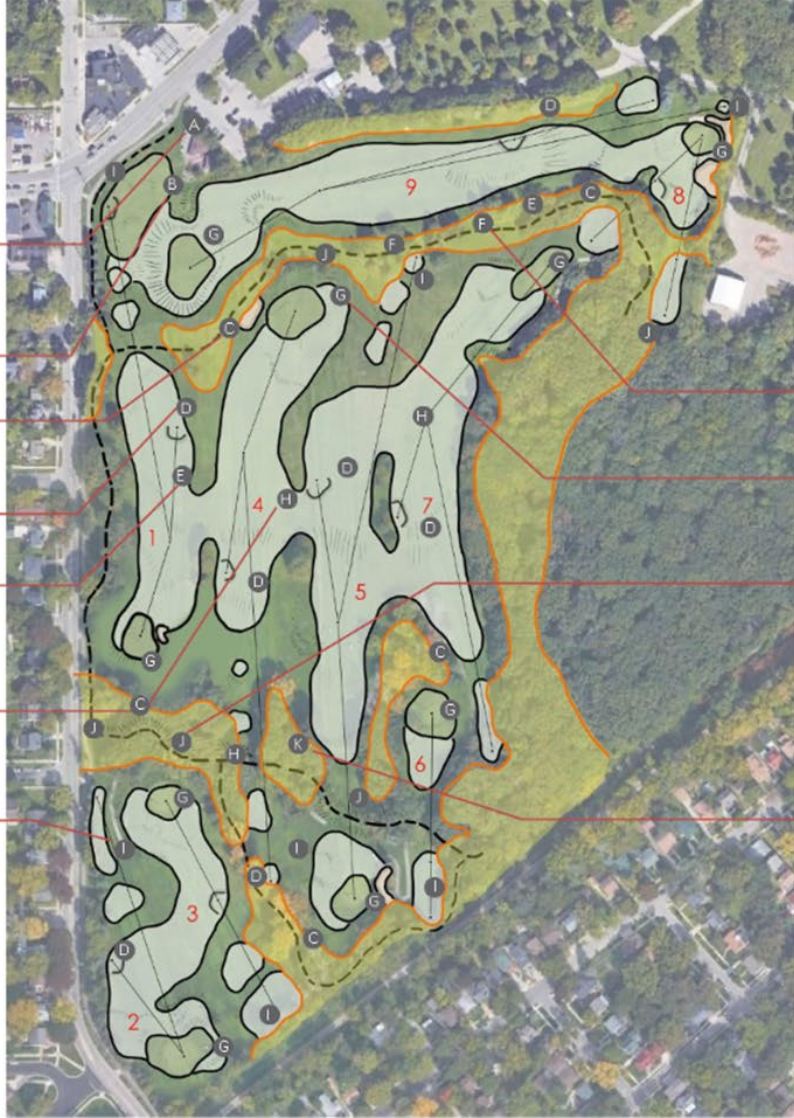
Proposed Master Plan

- A – CHILDREN’S PLAY AREA AND SANDBOX NEAR PUTTING GREEN**
Fun play area for kids next to the public putting course
- B – PUTTING COURSE**
Open and Free to Public
- C – PROPOSED EXPANSION OF MANAGED NATIVE GRASS AREAS**
Expand native restoration area
- D – FORWARD TEES**
Tees for all ages and ability
- E – OUTDOOR COMMUNITY EVENT SPACE**
#1 fairway is available at select times for neighborhood common space and for programmed events
- H – EXPANDED PLAY AREAS (all fairways)**
Widen fairways and approaches to provide more options off the tee and more interesting play into newly designed putting greens
- I – EXPANDED TEES**
Expanded tee areas at par-3s and new forward and back tee options for golfers of all abilities

LEGEND

-  Golf Tees and Fairways
-  Golf Greens
-  Golf Rough
-  Golf Bunkers
-  Restored Prairie Areas
-  Community Trails

- F – SELECT TREE PLANTING**
Native tree plantings within the expanded naturalized areas
- G – REBUILD AND REDESIGN GREEN COMPLEXES**
Introduce interesting golf architecture through rebuilding greens
- J – INTEGRATED WALKING AND WINTER TRAILS**
Establish new community trail through the golf course, linking with other local trails
- K – SELECT PRUNING AND REMOVAL OF DEAD AND DAMAGED TREES**
Arborist-guided removal and pruning of dead, diseased or damaged trees where necessary



GLENWAY GOLF COURSE