

2125 COMMERCIAL AVENUE  
MADISON COLLEGE COMM. AVE. BUILDING B

---

**UDC INITIAL/FINAL**

# UDC INFORMATIONAL PROJECT LOCATION



LOCATION MAP  
Scale: NTS

UDC INFORMATIONAL  
**SITE CONTEXT**



VIEW OF NEIGHBORING NEIGHBORING BUSINESSES EAST ACROSS PENNSYLVANIA AVE



VIEW OF NEIGHBORING OSCAR MEYER CAMPUS NORTH ACROSS COMMERCIAL AVE



VIEW OF NEIGHBORING BUSINESSES LOCATED SOUTH OF PROJECT LOCATION



VIEW OF NEIGHBORING DEMETRAL PARK WEST ACROSS PACKERS AVE

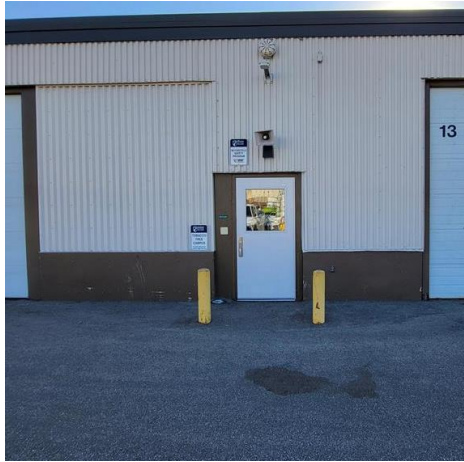
UDC INFORMATIONAL  
**SITE CONTEXT**



VIEW OF NEIGHBORING MADISON COLLEGE BUILDING A



VIEW OF BUILDING B FROM COMMERCIAL AVE

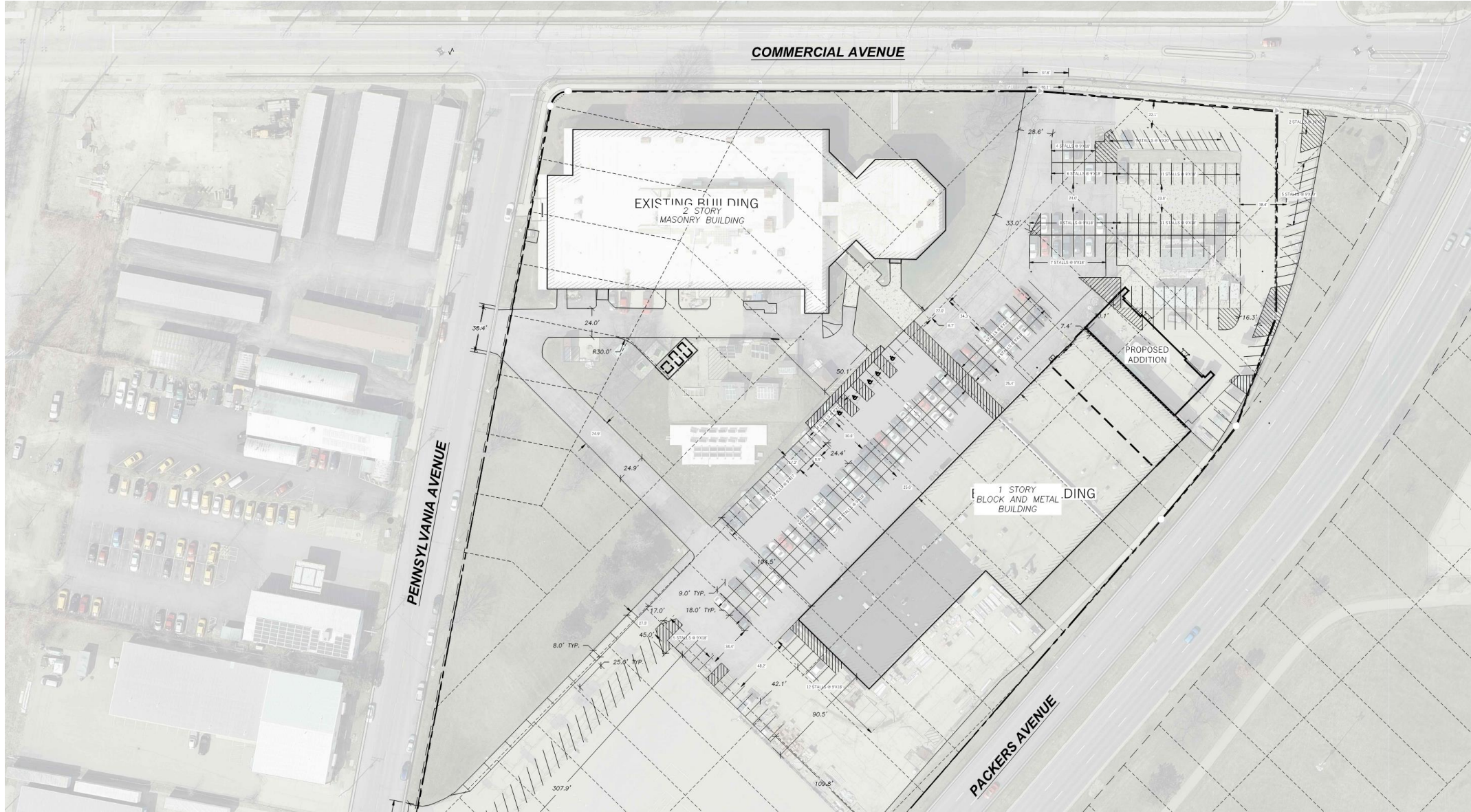


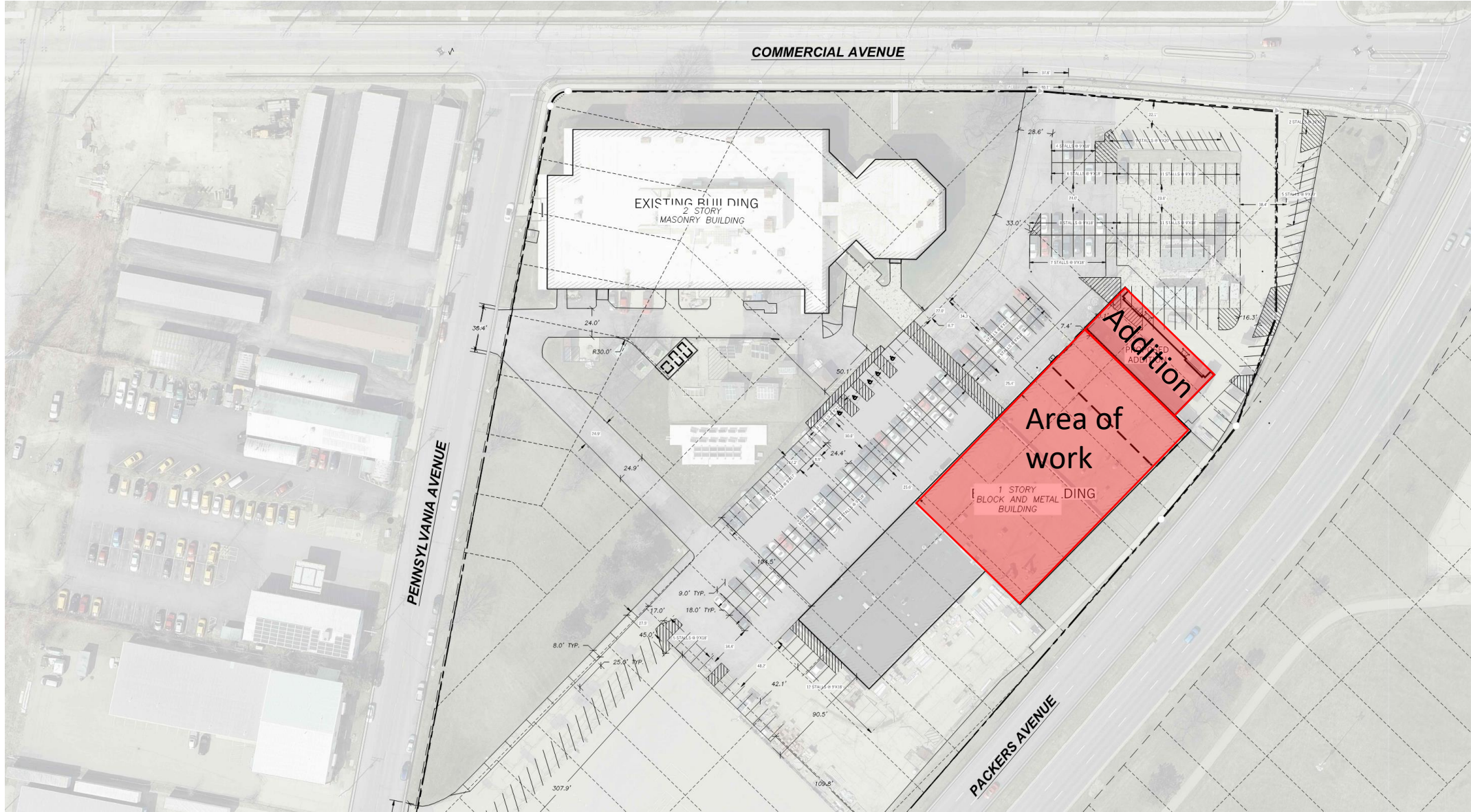
EXISTING STUDENT ENTRANCE



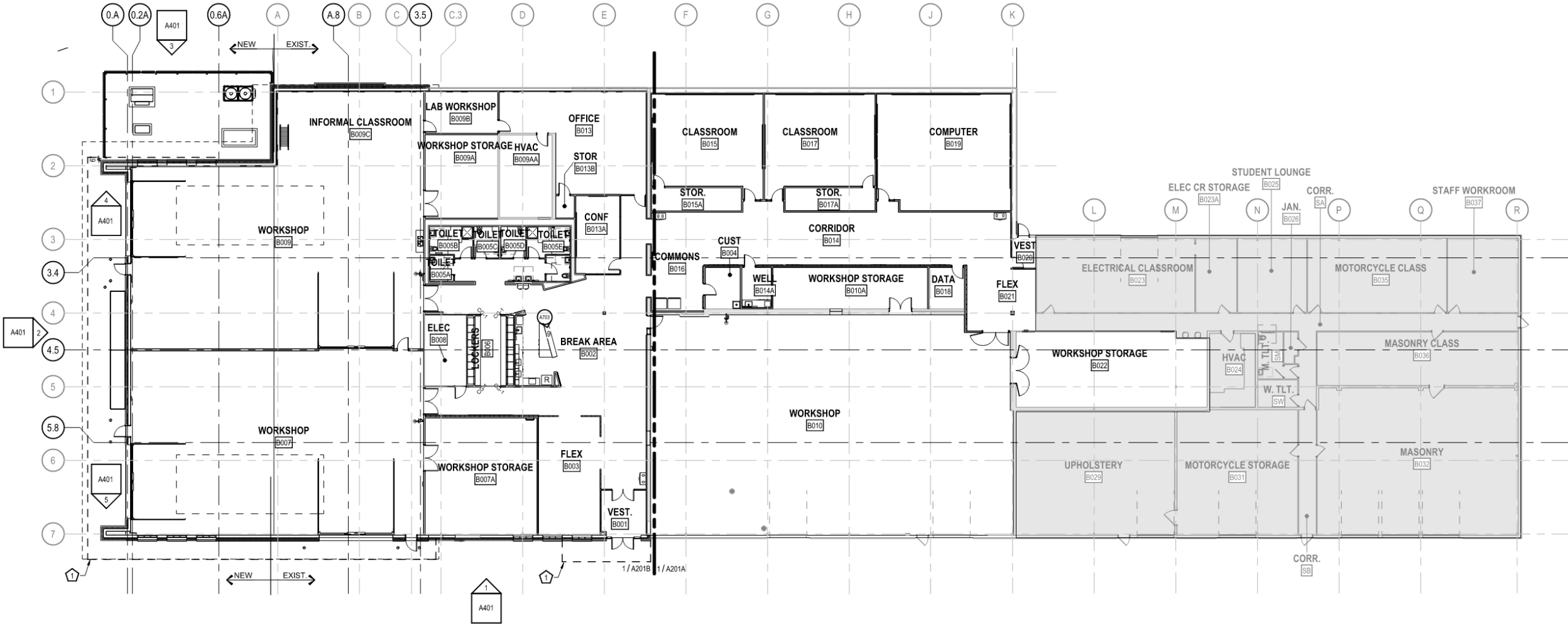
VIEW OF BUILDING B FROM PACKERS AVE

UDC INFORMATIONAL  
**SITE PLAN**





# PROPOSED ADDITION – FLOOR PLAN

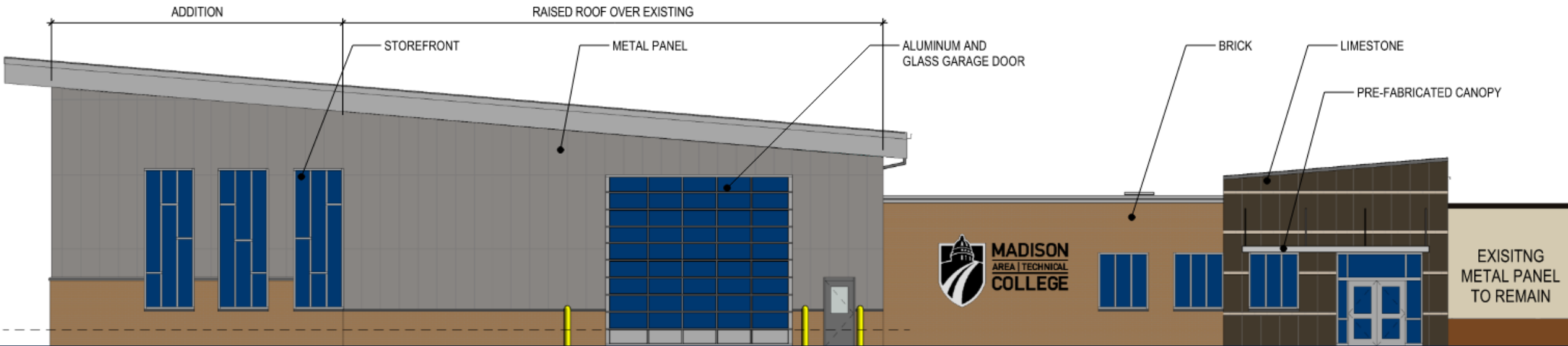


**FIRST FLOOR PLAN**  
SCALE: 1/16" = 1'-0"



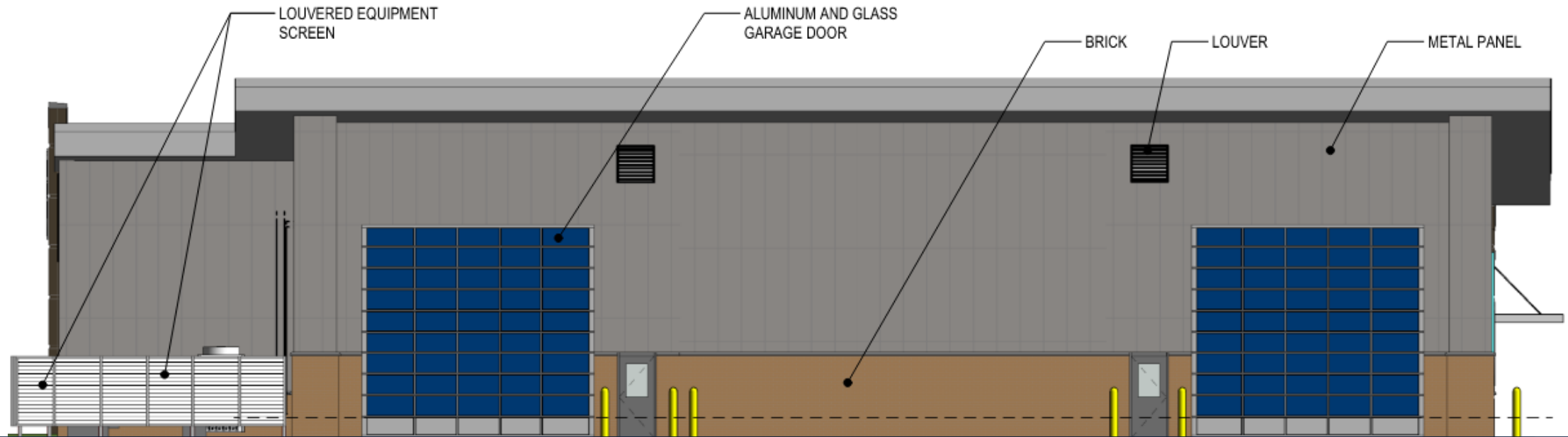
UDC INFORMATIONAL

# PROPOSED ADDITION – WEST ELEVATION

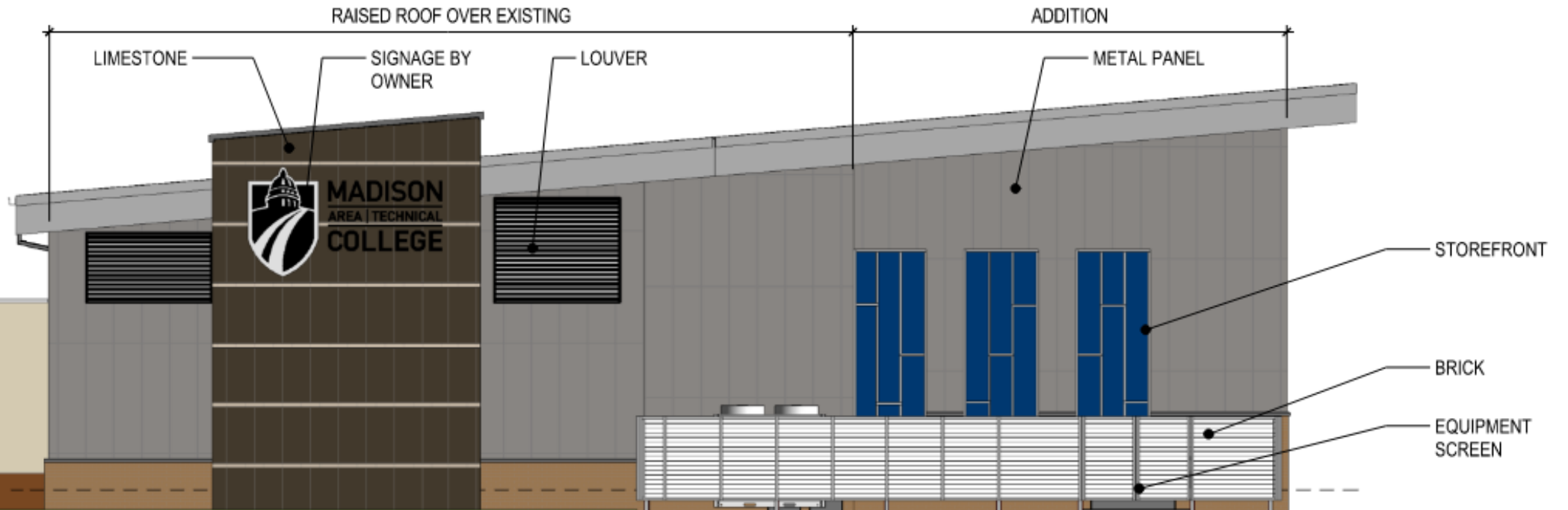




# PROPOSED ADDITION – NORTH ELEVATION



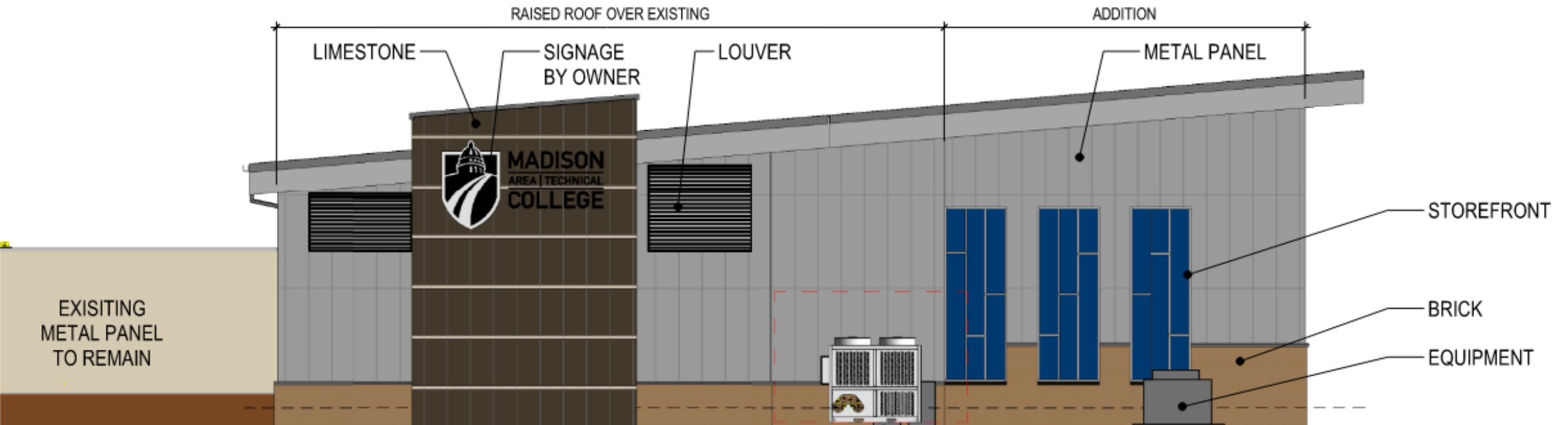
# PROPOSED ADDITION – EAST ELEVATION





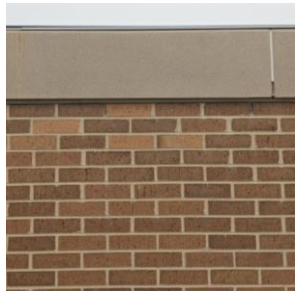
UDC INFORMATIONAL

# PROPOSED ADDITION – EAST ELEVATION





MADISON COLLEGE EARLY LEARNING CAMPUS



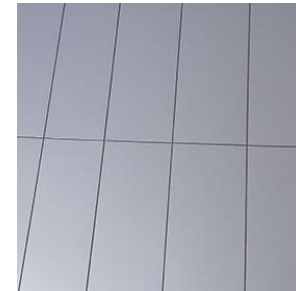
**Brick**

- Utility Brick
- Sioux City Toasted Fine Art, Badlands
- Precast stone caps and sills



**Stone**

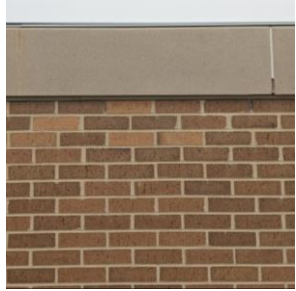
- Dolomitic Limestone
- Bed Face Prairie Buff/Gold



**Metal Panel**

- Clear anodized aluminum
- Aluminum Composite Material (ACM) panel

UDC INFORMATIONAL  
**PROPOSED ADDITION**



**Brick**

- Utility Brick
- Sioux City Toasted Fine Art, Badlands
- Precast stone caps and sills



**Stone**

- Dolomitic Limestone
- Bed Face Prairie Buff/Gold

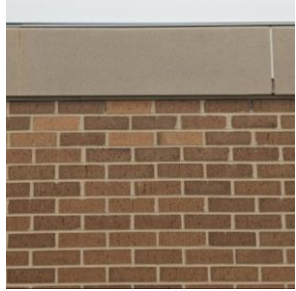


**Metal Panel**

- Clear anodized aluminum
- Aluminum Composite Material (ACM) panel



UDC INFORMATIONAL  
**PROPOSED ADDITION**



**Brick**

- Utility Brick
- Sioux City Toasted Fine Art, Badlands
- Precast stone caps and sills



**Stone**

- Dolomitic Limestone
- Bed Face Prairie Buff/Gold



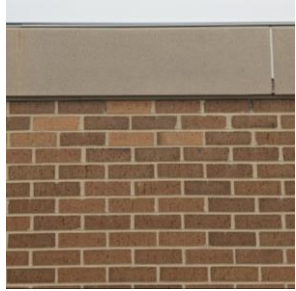
**Metal Panel**

- Clear anodized aluminum
- Aluminum Composite Material (ACM) panel



VIEW FROM COMMERCIAL AVENUE ENTRANCE

UDC INFORMATIONAL  
**PROPOSED ADDITION**



**Brick**

- Utility Brick
- Sioux City Toasted Fine Art, Badlands
- Precast stone caps and sills



**Stone**

- Dolomitic Limestone
- Bed Face Prairie Buff/Gold



**Metal Panel**

- Clear anodized aluminum
- Aluminum Composite Material (ACM) panel



VIEW FROM PACKERS AVENUE