

TRANSPORTATION PROJECT PLAT NO: 12777-3- 4.02 AMENDMENT NO. 2

THIS AMENDMENT ADDS UTILITY NUMBER 112 AND THE MAPPED LOCATIONS THEREOF WITHIN PARCEL 4 TO TRANSPORTATION PROJECT PLAT 12777-3 - 4.02 RECORDED AS DOCUMENT NUMBER 5904319 AND FILED IN VOLUME 61-088B ON PAGES 513 -514.

THAT PART OF LOT 1 OF CSM 15456 (RECORDED IN VOL. 111 OF CERTIFIED SURVEYS, P. 117, AS DOC. 5616984), PART OF LOT 2 OF WESTWARD WOODS REPLAT, PART OF LOTS 1, 5, 6, 7, 8, AND 9 OF WESTWARD VILLAGE AND PART OF LOT 1 OF CSM 15619 (RECORDED IN VOL. 113 OF CERTIFIED SURVEYS, P. 81, AS DOC. 5696035), LOCATED IN THE SE 1/4 OF THE SW 1/4 OF SECTION 23 AND PART OF LOT 4, HIGHPOINT COMMERCIAL, LOCATED IN THE NE 1/4 OF THE NW 1/4 OF SECTION 26, ALL IN T 7 N, R 8 E, CITY OF MADISON, DANE COUNTY, WISCONSIN.

RELOCATION ORDER EAST-WEST BUS RAPID TRANSIT - MINERAL POINT ROAD SEGMENT, W. BELTLINE HIGHWAY TO WHITNEY WAY, DANE COUNTY.

TO PROPERLY ESTABLISH, LAY OUT, WIDEN, ENLARGE, EXTEND, CONSTRUCT, RECONSTRUCT, IMPROVE, OR MAINTAIN A PORTION OF THE HIGHWAY DESIGNATED ABOVE, THE CITY OF MADISON DEEMS IT NECESSARY TO RELOCATE OR CHANGE SAID HIGHWAY AND ACQUIRE CERTAIN LANDS AND INTERESTS OR RIGHTS IN LANDS FOR THE ABOVE-NAMED PROJECT.

TO EFFECT THIS CHANGE, PURSUANT TO AUTHORITY GRANTED UNDER SUBSECTIONS 62.22, WISCONSIN STATUTES, THE CITY OF MADISON. HEREBY ORDERS THAT:
1. THAT PORTION OF SAID HIGHWAY AS SHOWN ON THIS PLAT IS LAID OUT AND ESTABLISHED TO THE LINES AND WIDTHS AS SO SHOWN FOR THE ABOVE-NAMED PROJECT.
2. THE LANDS OR INTERESTS OR RIGHTS IN LANDS AS SHOWN ON THIS PLAT ARE REQUIRED BY THE CITY OF MADISON FOR THE ABOVE PROJECT AND SHALL BE ACQUIRED IN THE NAME OF THE CITY OF MADISON, PURSUANT TO THE PROVISIONS OF SUBSECTION 62.22, WISCONSIN STATUTES.

NOTES:
POSITIONS SHOWN ON THIS PLAT ARE WISCONSIN COORDINATE REFERENCE SYSTEM COORDINATES (WISCRS), DANE COUNTY, NAD 83(2007) IN U.S.SURVEY FEET. VALUES SHOWN ARE GRID COORDINATES, GRID BEARINGS AND GRID DISTANCES. GRID DISTANCES MAY BE USED AS GROUND DISTANCES.
ALL NEW RIGHT-OF-WAY MONUMENTS ARE TYPE 2 (TYPICALLY 3/4" X 24" REBARS) UNLESS OTHERWISE NOTED, AND WILL BE PLACED PRIOR TO THE COMPLETION OF THE PROJECT.
RIGHT-OF-WAY BOUNDARIES ARE DEFINED WITH COURSES OF THE PERIMETER OF THE HIGHWAY LANDS REFERENCED TO THE U.S. PUBLIC LAND SURVEY SYSTEM OR OTHER "SURVEYS OF PUBLIC RECORD".
PROPERTY LINES SHOWN ON THIS PLAT ARE DRAWN FROM DATA DERIVED FROM MAPS AND DOCUMENTS OF PUBLIC RECORD AND/OR EXISTING OCCUPATIONAL LINES. THIS PLAT MAY NOT BE A TRUE REPRESENTATION OF EXISTING PROPERTY LINES, EXCLUDING RIGHT-OF-WAY LINES, AND SHOULD NOT BE USED AS A SUBSTITUTE FOR AN ACCURATE FIELD SURVEY.
FOR CURRENT ACCESS/DRIVEWAY INFORMATION, CONTACT THE TRAFFIC ENGINEERING UNIT OF THE CITY OF MADISON.
EXISTING ACCESS CONTROL ESTABLISHED FROM WESTWARD WOODS REPLAT, WESTWARD VILLAGE AND HIGHPOINT COMMERCIAL.
FOUND PROPERTY IRONS ARE 3/4" REBAR, UNLESS OTHERWISE NOTED.
FOR ADDITIONAL INFORMATION REFER THE TITLE SHEET, RECORDED AS SHEET 2 OF 4 IN VOLUME 61-088A OF TRANSPORTATION PROJECT PLATS, ON PAGES 509 - 512 AS DOCUMENT NO. 5903206.

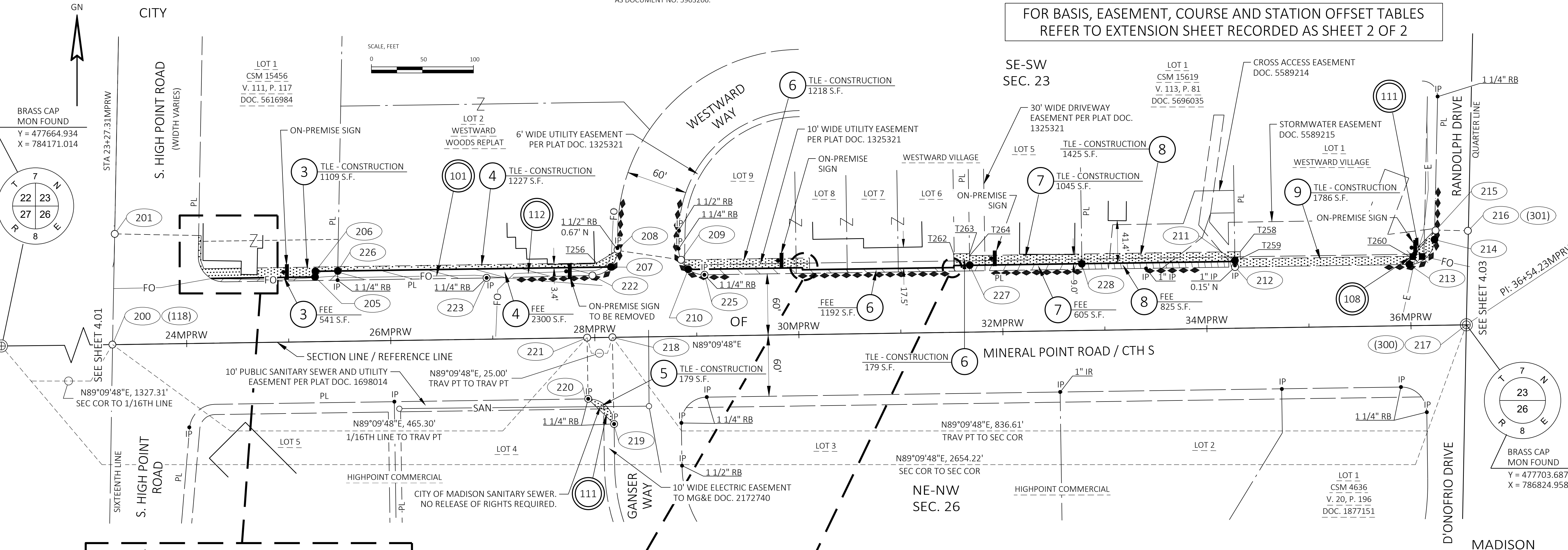
SCHEDULE OF LANDS & INTERESTS REQUIRED						
PARCEL NUMBER	OWNER(S)	INTEREST(S) REQUIRED	R/W SF REQUIRED			TLE SF
			NEW	EXISTING	TOTAL	
3	ASSOCIATED BANK, NATIONAL ASSOCIATION	FEE/TLE	541	----	541	1109
4	BANKERS' BANK OF WISCONSIN	FEE/TLE	2300	----	2300	1227
5	DUPACO COMMUNITY CREDIT UNION	TLE	----	----	----	179
6	QUATTRO MADISON, LLC	FEE/TLE	1192	----	1192	1397
7	LEUTHNER PROPERTIES LLC	FEE/TLE	605	----	605	1045
8	KWIK TRIP, INC.	FEE/TLE	825	----	825	1425
9	JR OF MADISON, LLC	TLE	----	----	----	1786

Office of Register of Deeds
Dane County, Wisconsin

Received for Record _____
20____ at _____ o'clock _____ M
and recorded in vol. _____
of _____ on page _____

Register

RESERVED FOR REGISTER OF DEEDS
PROJECT NUMBER 12777 - 3 - 4.02
SHEET 1 OF 2
AMENDMENT NO. 2



FILE NAME : G:\AECOM\20063-000 MADISON BRT\CIVIL 3D\SHEETSP\PLAN\040102-RP - 4.02-AMEND 2.DWG
APPRAISAL PLAT DATE : 06/04/2025

PLOT DATE :

PLOT BY :

PLOT NAME :

PLOT SCALE : 1 IN:100 FT

LOCATION SKETCH NOT TO SCALE

SHEET 4.02 LOCATION

PROJECT LOCATION

APPROVED FOR THE CITY OF MADISON

RELOCATION ORDER APPROVED BY THE COMMON COUNCIL
RES- FILE ID: _____
DATE: _____ CITY CLERK

RELOCATION ORDER APPROVED BY THE PLANNING COMMISSION
DATE: _____ EXECUTIVE SECRETARY

RELOCATION ORDER APPROVED BY THE BOARD OF PUBLIC WORKS
DATE: _____ EXECUTIVE SECRETARY

KL Engineering
[A] Better Experience

I, TIMOTHY M. HELD, PROFESSIONAL LAND SURVEYOR, HEREBY CERTIFY THAT IN FULL COMPLIANCE WITH THE PROVISIONS OF SECTION 84.095 OF THE WISCONSIN STATUTES AND UNDER THE DIRECTION OF THE CITY OF MADISON, I HAVE SURVEYED AND MAPPED THIS TRANSPORTATION PROJECT PLAT AND SUCH PLAT CORRECTLY REPRESENTS ALL EXTERIOR BOUNDARIES OF THE SURVEYED LAND.

WISCONSIN LAND SURVEYOR

TIMOTHY M. HELD
S-2591
MADISON, WI

SIGNATURE: *T. M. Held* DATE: 06/04/2025
PRINT NAME: TIMOTHY M. HELD
REGISTRATION NUMBER: S-2591

TRANSPORTATION PROJECT PLAT NO: 12777-3 - 4.02 AMENDMENT NO. 2
EXTENSION SHEET

RELOCATION ORDER EAST-WEST BUS RAPID TRANSIT - MINERAL POINT ROAD SEGMENT, W. BELTLINE HIGHWAY TO WHITNEY WAY, DANE COUNTY.

SHEET 2 OF 2: BASIS, EASEMENT, COURSE AND STATION OFFSET TABLES

4

R/W COURSE TABLE			
FROM POINT	TO POINT	BEARING	DISTANCE
200	201	N01° 06' 12"E	108.59'
201	202	S88° 53' 48"E	82.28'
202	203	S01° 02' 47"W	19.93'
203	204	SEE CURVE NOTE	
204	205	N89° 09' 48"E	102.20'
205	206	N00° 50' 12"W	5.50'
206	226	N89° 09' 48"E	22.02'
226	207	N89° 09' 48"E	267.74'
207	208	SEE CURVE NOTE	
208	209	S81° 34' 18"E	62.95'
209	210	SEE CURVE NOTE	
210	229	N89° 09' 48"E	111.67'
229	230	S00° 50' 12"E	2.00'
230	231	N89° 09' 48"E	148.45'
231	232	N00° 50' 12"W	2.00'
232	227	N89° 09' 48"E	15.52'
227	228	N89° 09' 48"E	110.00'
228	211	N89° 09' 48"E	150.00'
211	212	S00° 50' 32"E	5.50'
212	213	N89° 09' 48"E	170.89'
213	214	SEE CURVE NOTE	
214	215	N01° 14' 08"E	9.31'
215	216	S88° 45' 29"E	33.00'
216	217	S01° 14' 31"W	92.26'
217	218	S89° 09' 48"W	836.61'
218	219	S00° 50' 12"E	85.00'
219	220	SEE CURVE NOTE	
220	221	N00° 50' 12"W	60.00'
221	200	S89° 09' 48"W	465.30'
207	222	SEE CURVE NOTE	
222	223	S88° 38' 54"W	103.79'
223	224	S89° 09' 48"W	257.24'
224	204	SEE CURVE NOTE	
212	225	S89° 09' 48"W	520.00'
225	210	SEE CURVE NOTE	

203-204
DELTA = 61°11'59" RT
R = 25.00'
LCH = 25.45'
LCB = S29°33'12"E
L = 26.70'

207-208
DELTA = 40°48'11" LT
R = 25.00'
LCH = 17.43'
LCB = N21°23'35"E
L = 17.80'

209-210
DELTA = 27°40'57" LT
R = 25.00'
LCH = 11.96'
LCB = S38°15'21"E
L = 12.08'

213-214
DELTA = 87°55'41" LT
R = 25.00'
LCH = 34.71'
LCB = N45°11'58"E
L = 38.37'

219-220
DELTA = 90°00'00" LT
R = 25.00'
LCH = 35.36'
LCB = N45°50'12"W
L = 39.27'

207-222
DELTA = 45°51'14" RT
R = 25.00'
LCH = 19.88'
LCB = S65°13'18"W
L = 20.44'

224-204
DELTA = 30°41'00" RT
R = 25.00'
LCH = 13.23'
LCB = S75°29'42"W
L = 13.39'

225-210
DELTA = 38°44'22" RT
R = 25.00'
LCH = 16.58'
LCB = N71°28'01"W
L = 16.90'

R/W Station & Offset Table				
Point No.	Station	Offset	Y	X
200	23+27.31MPRW	0.00' RT	477684.313	785498.187
201	23+30.99MPRW	108.53' LT	477792.881	785500.278
202	24+13.22MPRW	105.74' LT	477791.296	785582.543
203	24+12.57MPRW	85.82' LT	477771.371	785582.179
204	24+24.80MPRW	63.50' LT	477749.230	785594.733
205	25+27.00MPRW	63.50' LT	477750.722	785696.924
206	25+27.00MPRW	69.00' LT	477756.222	785696.844
207	28+16.75MPRW	69.00' LT	477760.452	785986.567
208	28+23.35MPRW	85.13' LT	477776.681	785992.925
209	28+85.47MPRW	75.00' LT	477767.455	786055.192
210	28+92.74MPRW	65.50' LT	477758.062	786062.599
211	34+28.39MPRW	65.50' LT	477765.883	786598.187
212	34+28.39MPRW	60.00' LT	477760.383	786598.268
213	35+99.28MPRW	60.00' LT	477762.878	786769.140
214	36+24.26MPRW	84.10' LT	477787.337	786793.769
215	36+24.60MPRW	93.40' LT	477796.643	786793.970
216	36+57.55MPRW	92.20' LT	477795.927	786826.958
217	36+54.23MPRW	0.00' RT	477703.687	786824.958
218	28+17.62MPRW	0.00' RT	477691.472	785988.439
219	28+17.62MPRW	85.00' RT	477606.481	785989.680
220	27+92.62MPRW	60.00' RT	477631.114	785964.318
221	27+92.62MPRW	0.00' RT	477691.107	785963.442
222	27+98.59MPRW	60.93' LT	477752.121	785968.518
223	26+94.80MPRW	60.00' LT	477749.672	785864.753
224	24+37.56MPRW	60.00' LT	477745.917	785607.540
225	29+08.39MPRW	60.00' LT	477752.791	786078.322
226	25+49.02MPRW	69.00' LT	477756.543	785718.857
227	31+68.39MPRW	65.50' LT	477762.087	786338.215
228	32+78.39MPRW	65.50' LT	477763.693	786448.203
229	30+04.41MPRW	65.50' LT	477759.692	786174.256
230	30+04.41MPRW	63.50' LT	477757.693	786174.285
231	31+52.86MPRW	63.50' LT	477759.860	786322.722
232	31+52.86MPRW	65.50' LT	477761.860	786322.693

TLE Station & Offset Table				
Point No.	Station	Offset	Y	X
T251	24+15.72MPRW	105.66' LT	477791.250	785585.043
T252	24+14.92MPRW	81.17' LT	477766.754	785584.595
T253	24+17.86MPRW	73.15' LT	477758.778	785587.652
T254	24+54.26MPRW	73.15' LT	477759.309	785624.049
T255	24+70.16MPRW	73.15' LT	477759.541	785639.954
T256	28+02.82MPRW	73.15' LT	477764.398	785972.573
T258	34+33.77MPRW	75.00' LT	477775.460	786603.432
T259	34+33.68MPRW	68.00' LT	477768.460	786603.437
T260	35+99.23MPRW	68.00' LT	477770.877	786768.977
T261	31+52.86MPRW	63.75' LT	477760.110	786322.719
T262	31+52.86MPRW	77.00' LT	477773.359	786322.525
T263	31+68.39MPRW	77.00' LT	477773.585	786338.046
T264	31+68.39MPRW	75.00' LT	477771.586	786338.075
T265	24+54.25MPRW	67.00' LT	477753.160	785624.132
T266	24+70.16MPRW	66.47' LT	477752.866	785640.043
T267	30+11.41MPRW	75.00' LT	477769.294	786181.116
T268	30+11.41MPRW	63.75' LT	477758.045	786181.280

HIGHWAY	BASIS OF EXISTING R/W
MINERAL POINT ROAD / CTH 5	PREVIOUS R/W PROJECTS 1202, 0840002, WESTWARD WOODS REPLAT, WESTWARD VILLAGE , CSM 15456, CSM 4636
WESTWARD WAY	WESTWARD WOODS REPLAT, WESTWARD VILLAGE
RANDOLPH DRIVE	WESTWARD VILLAGE
S. HIGHPOINT ROAD	HIGHPOINT COMMERCIAL, CSM 15456

EASEMENT TABLE

UTILITY NUMBER	OWNER	RECORDING INFORMATION	LOCATED IN R/W PARCEL NO.
101	VERIZON/MCI	NO EASEMENT OF RECORD	3,4
103	MG&E - ELECTRIC	DOC. 1698014 & DOC. 2172740	5
108	TDS METROCOM	DOC. 1325321	9
110	CITY OF MADISON	DOC. 5589215	9
111	ALLIANT ENERGY	DOC. 1325321	9
112	WIN TECHNOLOGIES	NO EASEMENT OF RECORD	4

UTILITY INTERESTS REQUIRED

UTILITY NUMBER	UTILITY OWNER(S)	INTEREST REQUIRED
101	VERIZON/MCI	RELEASE OF RIGHTS
103	MG&E - ELECTRIC	RELEASE OF RIGHTS
108	TDS METROCOM	RELEASE OF RIGHTS
110	CITY OF MADISON	NO RELEASE OF RIGHTS REQUIRED
111	ALLIANT ENERGY	RELEASE OF RIGHTS
112	WIN TECHNOLOGIES	RELEASE OF RIGHTS

4