

**APPLICATION FOR  
URBAN DESIGN COMMISSION  
REVIEW AND APPROVAL**

**AGENDA ITEM #** \_\_\_\_\_  
**Project #** \_\_\_\_\_

DATE SUBMITTED: <u>JUNE 22, 2010</u>	<b>Action Requested</b>
UDC MEETING DATE: <u>JUNE 30, 2010</u>	<input type="checkbox"/> Informational Presentation
	<input type="checkbox"/> Initial Approval and/or Recommendation
	<input checked="" type="checkbox"/> Final Approval and/or Recommendation

PROJECT ADDRESS: 2202 SOUTH STOUGHTON ROAD

ALDERMANIC DISTRICT: #16

OWNER/DEVELOPER (Partners and/or Principals) ARCHITECT/DESIGNER/OR AGENT:  
FARM & FLEET OF MADISON, INC. SAME AS OWNER  
P.O. Box 391  
JANESVILLE, WI 53547-0391

CONTACT PERSON: NEAL VAN LOO  
Address: PO Box 391  
JANESVILLE, WI 53547-0391  
Phone: 608.758.5190  
Fax: 608.754.3614  
E-mail address: nvanloo@blainsupply.com

TYPE OF PROJECT:  
(See Section A for:)

- Planned Unit Development (PUD)
  - General Development Plan (GDP)
  - Specific Implementation Plan (SIP)
- Planned Community Development (PCD)
  - General Development Plan (GDP)
  - Specific Implementation Plan (SIP)
- Planned Residential Development (PRD)
- New Construction or Exterior Remodeling in an Urban Design District \* (A public hearing is required as well as a fee)
- School, Public Building or Space (Fee may be required)
- New Construction or Addition to or Remodeling of a Retail, Hotel or Motel Building Exceeding 40,000 Sq. Ft.
- Planned Commercial Site

(See Section B for:)  
 New Construction or Exterior Remodeling in C4 District (Fee required)

(See Section C for:)  
 R.P.S.M. Parking Variance (Fee required)

(See Section D for:)  
 Comprehensive Design Review\* (Fee required)  
 Street Graphics Variance\* (Fee required)  
 Other \_\_\_\_\_

\*Public Hearing Required (Submission Deadline 3 Weeks in Advance of Meeting Date)

Where fees are required (as noted above) they apply with the first submittal for either initial or final approval of a project.



Farm and Fleet outdoor storage lot view looking to the North West



Farm and Fleet outdoor storage lot view looking to the South West



Jenk's Service Center view looking to the North West



Jenk's Service Center view looking to the South West



Ziebart View looking from the East



Ziebart view looking from the South East



Drexel Furniture view looking from the South East



Drexel Furniture view looking from the South East



Farm and Fleet view looking from the South East



Farm and Fleet view looking from the North East

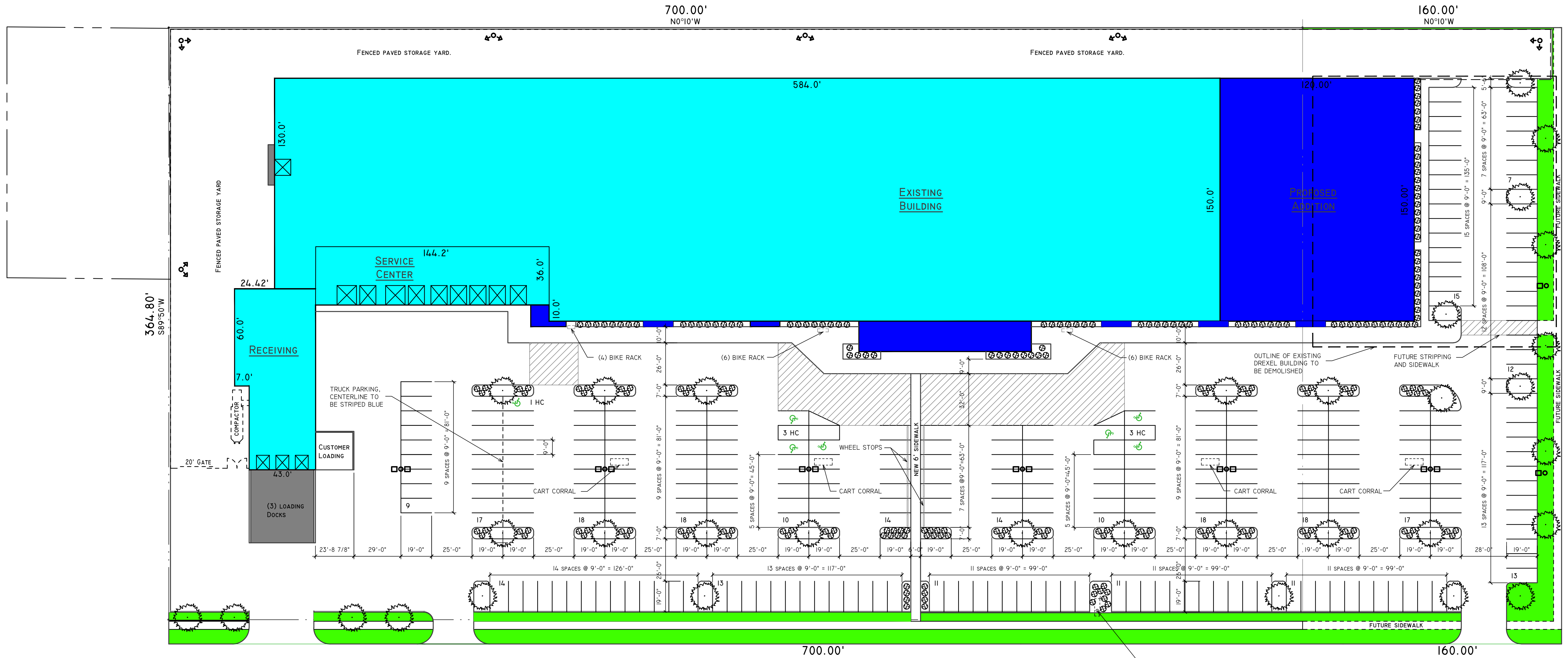


3507 East Racine Street · P.O. Box 391 · Janesville, WI 53547-0391 · 608-754-2821 · 608-754-3614 fax

# Locator Map







**PARKING REQUIREMENTS**

CITY OF MADISON REQUIREMENTS:  
 1 STALL PER 300 SF OF GROSS FLOOR AREA  
 EXISTING BUILDING 90,818 SF  
 PROPOSED BUILDING 19,840 SF  
 GROSS FLOOR AREA 110,658 SF

110,658 SF / 300 SF = 369 STALLS REQUIRED

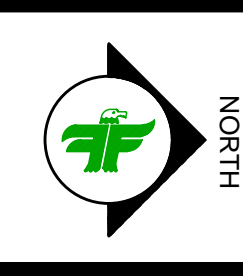
PLAN SHOWS THE FOLLOWING:  
 270 PARKING STALLS  
 7 HANDICAP PARKING STALLS  
 277 TOTAL PARKING STALLS  
 (92 PARKING STALLS LESS THAN CITY OF MADISON REQUIREMENTS)

Rev.	By	Date	Description
3	NVL	JUNE 23, 10	PRELIMINARY - SUBMITTED FOR REVIEW
2	NVL	JUNE 8, 10	PRELIMINARY - SUBMITTED FOR REVIEW
1	NVL	MAY 11, 10	PRELIMINARY - SUBMITTED FOR REVIEW
0	NVL	FEB 16, 10	PRELIMINARY - SUBMITTED FOR REVIEW

**Blain's FARM & FLEET**  
 P.O. BOX 391 3507 EAST RACINE STREET  
 JANESVILLE, WI 53547  
 608-754-2551

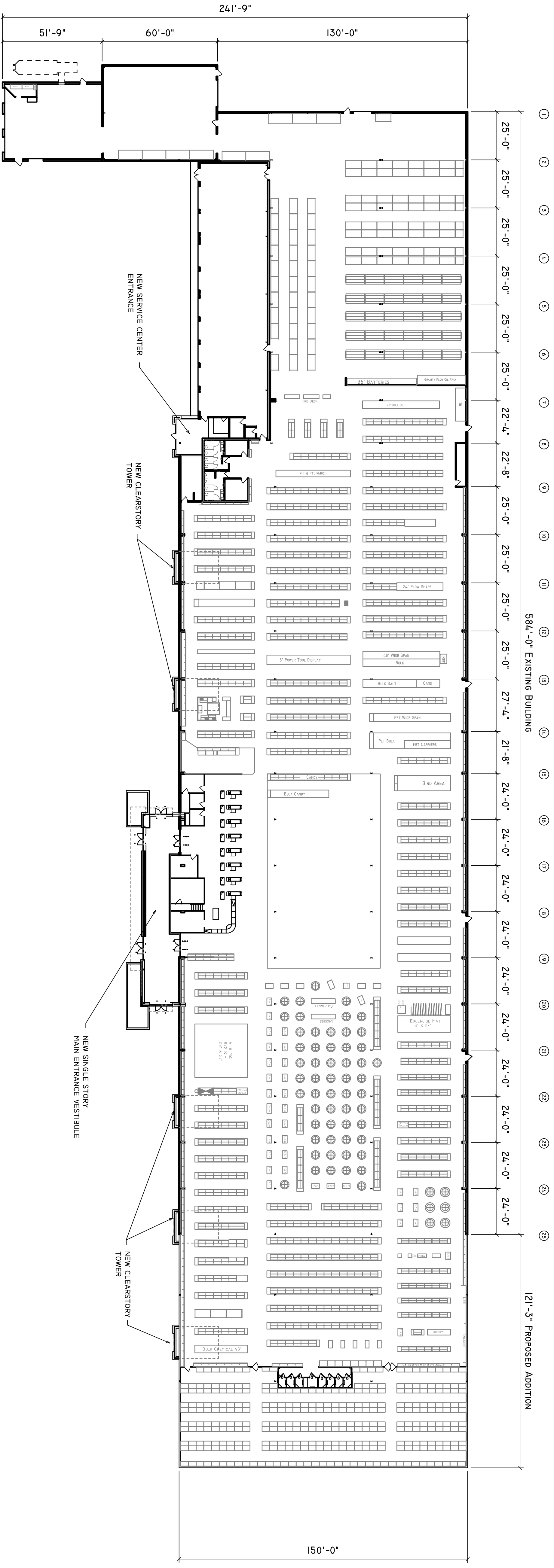
Scale: 1" = 30'-0"  
 Date: FEBRUARY 8, 2010  
 Drawn By: NVL  
 Checked By:

This document contains confidential information of Farm & Fleet, Inc. Neither this document nor the information herein is to be reproduced, used or disclosed either in whole or in part except as specifically authorized by Farm & Fleet, Inc.



Project Name: FARM & FLEET OF MADISON  
 2202 SOUTH STOUGHTON ROAD  
 MADISON, WI 53716

Project Title: PROPOSED SITE PLAN



Rev.	By	Date	Description
0	DCW	JUNE 8, 10	PRELIMINARY - SUBMITTED FOR REVIEW

**Blair's**  
**FARM & FLEET**  
 P.O. BOX 391 3907 EAST RAAGINE STREET  
 JANESVILLE, WI 53547  
 608.755.1111

Scale:	1" = 30'-0"	Date:	JUNE 8, 2010
Drawn By:	EEG	Checked By:	DCW

This document contains confidential information of Farm & Fleet, Inc. Neither this document nor the information herein is to be reproduced, used or disclosed either in whole or in part except as specifically authorized by Farm & Fleet, Inc.



Project Name:	FARM & FLEET OF MADISON
Project Title:	PROPOSED FLOOR PLAN

Drawing No. **4.0**



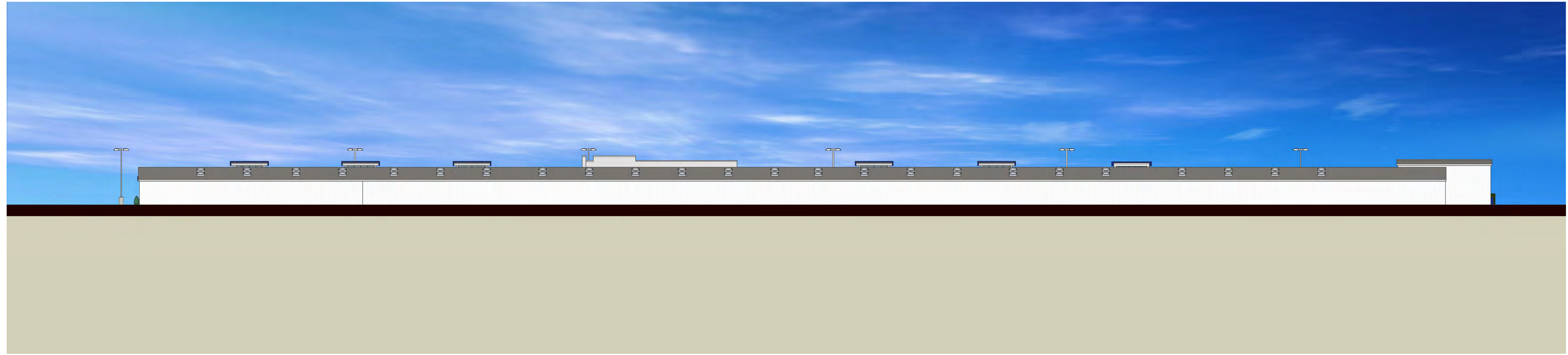




**EAST ELEVATION**  
SCALE: 1"=30'



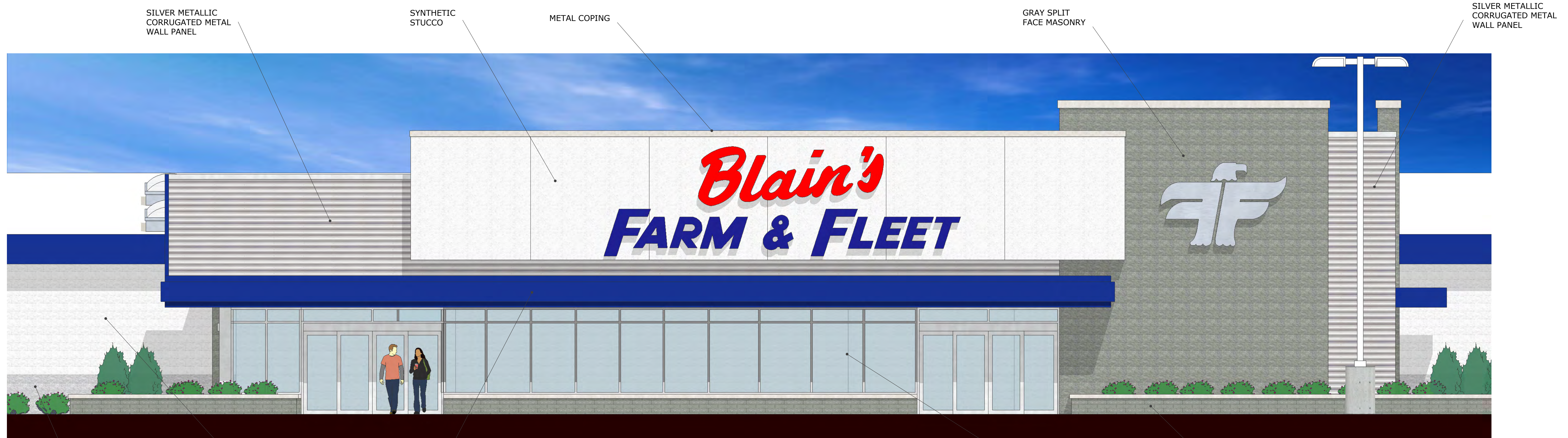
**NORTH ELEVATION**  
SCALE: 1"=20'



**WEST ELEVATION**  
SCALE: 1"=30'



**SOUTH ELEVATION**  
SCALE: 1"=20'



SILVER METALLIC CORRUGATED METAL WALL PANEL

SYNTHETIC STUCCO

METAL COPING

GRAY SPLIT FACE MASONRY

SILVER METALLIC CORRUGATED METAL WALL PANEL

LIGHT GRAY SPLIT FACE MASONRY PLANTER

WHITE SPLIT FACE MASONRY

COMPOSITE ALUMINUM WALL PANEL

**PARTIAL MAIN ENTRANCE ELEVATION**  
SCALE: 1/8" = 1'-0"

LOW-E INSULATING GLASS IN ANODIZED ALUMINUM FRAMING

GRAY SPLIT FACE MASONRY PLANTER

SILVER METALLIC CORRUGATED METAL WALL PANEL

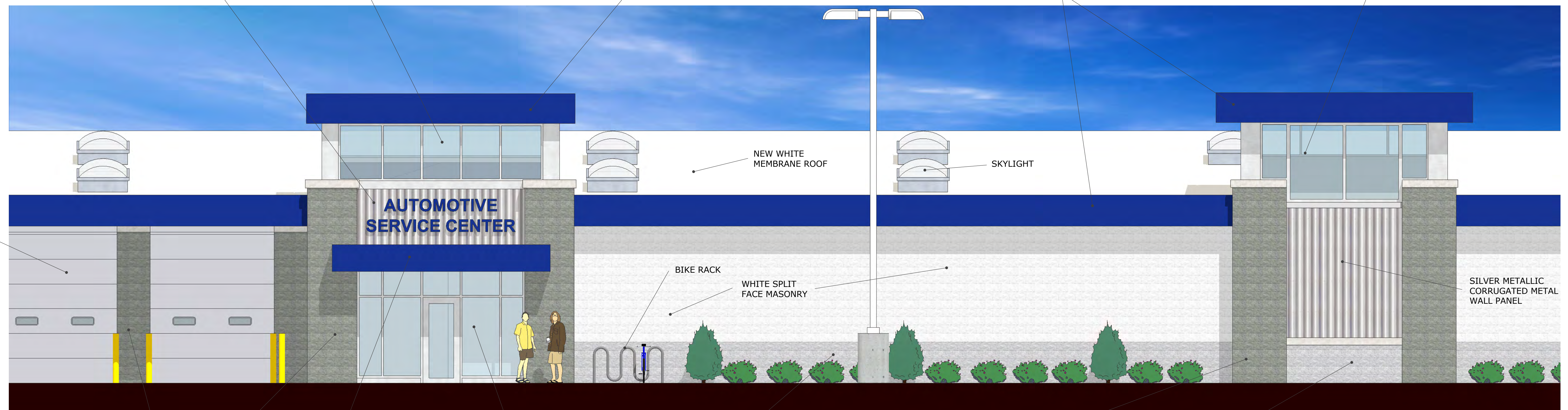
LOW-E INSULATING GLASS IN ANODIZED ALUMINUM FRAMING

COMPOSITE ALUMINUM WALL PANEL

COMPOSITE ALUMINUM WALL PANEL

LOW-E INSULATING GLASS IN ANODIZED ALUMINUM FRAMING

NEW WHITE INSULATED OVERHEAD DOORS



NEW WHITE MEMBRANE ROOF

SKYLIGHT

**AUTOMOTIVE SERVICE CENTER**

BIKE RACK

WHITE SPLIT FACE MASONRY

SILVER METALLIC CORRUGATED METAL WALL PANEL

GRAY SPLIT FACE MASONRY

COMPOSITE ALUMINUM CANOPY

LOW-E INSULATING GLASS IN ANODIZED ALUMINUM FRAMING

LIGHT GRAY SPLIT FACE MASONRY

GRAY SPLIT FACE MASONRY

LIGHT GRAY SPLIT FACE MASONRY

**PARTIAL SERVICE CENTER ENTRANCE ELEVATION**  
SCALE: 1/8" = 1'-0"



**PERSPECTIVE A**



**PERSPECTIVE B**





**PERSPECTIVE C**



**PERSPECTIVE D**