

SECOND FLOOR PLAN

FLOOR PLAN KEY NOTES

1. LIGHT SWITCH SHALL BE LOCATED IN THE ROOM TO WHICH IT SERVES.
2. LIGHT SWITCH SHALL BE LOCATED IN THE ROOM TO WHICH IT SERVES.
3. LIGHT SWITCH SHALL BE LOCATED IN THE ROOM TO WHICH IT SERVES.
4. LIGHT SWITCH SHALL BE LOCATED IN THE ROOM TO WHICH IT SERVES.
5. LIGHT SWITCH SHALL BE LOCATED IN THE ROOM TO WHICH IT SERVES.
6. LIGHT SWITCH SHALL BE LOCATED IN THE ROOM TO WHICH IT SERVES.
7. LIGHT SWITCH SHALL BE LOCATED IN THE ROOM TO WHICH IT SERVES.
8. LIGHT SWITCH SHALL BE LOCATED IN THE ROOM TO WHICH IT SERVES.
9. LIGHT SWITCH SHALL BE LOCATED IN THE ROOM TO WHICH IT SERVES.
10. LIGHT SWITCH SHALL BE LOCATED IN THE ROOM TO WHICH IT SERVES.

GENERAL PLAN NOTES

1. SEE MECHANICAL PLAN FOR ALL MECHANICAL EQUIPMENT.
2. SEE ELECTRICAL PLAN FOR ALL ELECTRICAL EQUIPMENT.
3. SEE PLUMBING PLAN FOR ALL PLUMBING EQUIPMENT.
4. SEE FIRE ALARM PLAN FOR ALL FIRE ALARM EQUIPMENT.
5. SEE SECURITY PLAN FOR ALL SECURITY EQUIPMENT.
6. SEE FINISH SCHEDULE FOR ALL FINISHES.
7. SEE MATERIAL SCHEDULE FOR ALL MATERIALS.
8. SEE SCHEDULE OF FINISHES FOR ALL FINISHES.
9. SEE MATERIAL SCHEDULE FOR ALL MATERIALS.
10. SEE SCHEDULE OF FINISHES FOR ALL FINISHES.

GENERAL MECHANICAL/PLUMBING NOTES

1. ALL MECHANICAL AND PLUMBING EQUIPMENT SHALL BE INSTALLED IN ACCORDANCE WITH THE LATEST EDITIONS OF THE INTERNATIONAL MECHANICAL AND PLUMBING INSTITUTE (IMPI) CODES.
2. ALL MECHANICAL AND PLUMBING EQUIPMENT SHALL BE INSTALLED IN ACCORDANCE WITH THE LATEST EDITIONS OF THE INTERNATIONAL MECHANICAL AND PLUMBING INSTITUTE (IMPI) CODES.
3. ALL MECHANICAL AND PLUMBING EQUIPMENT SHALL BE INSTALLED IN ACCORDANCE WITH THE LATEST EDITIONS OF THE INTERNATIONAL MECHANICAL AND PLUMBING INSTITUTE (IMPI) CODES.
4. ALL MECHANICAL AND PLUMBING EQUIPMENT SHALL BE INSTALLED IN ACCORDANCE WITH THE LATEST EDITIONS OF THE INTERNATIONAL MECHANICAL AND PLUMBING INSTITUTE (IMPI) CODES.
5. ALL MECHANICAL AND PLUMBING EQUIPMENT SHALL BE INSTALLED IN ACCORDANCE WITH THE LATEST EDITIONS OF THE INTERNATIONAL MECHANICAL AND PLUMBING INSTITUTE (IMPI) CODES.



THE LAMARCO AVE. STE. 300
MILWAUKEE, WI 53204
414.224.2500 FAX
414.224.2501

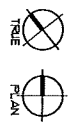
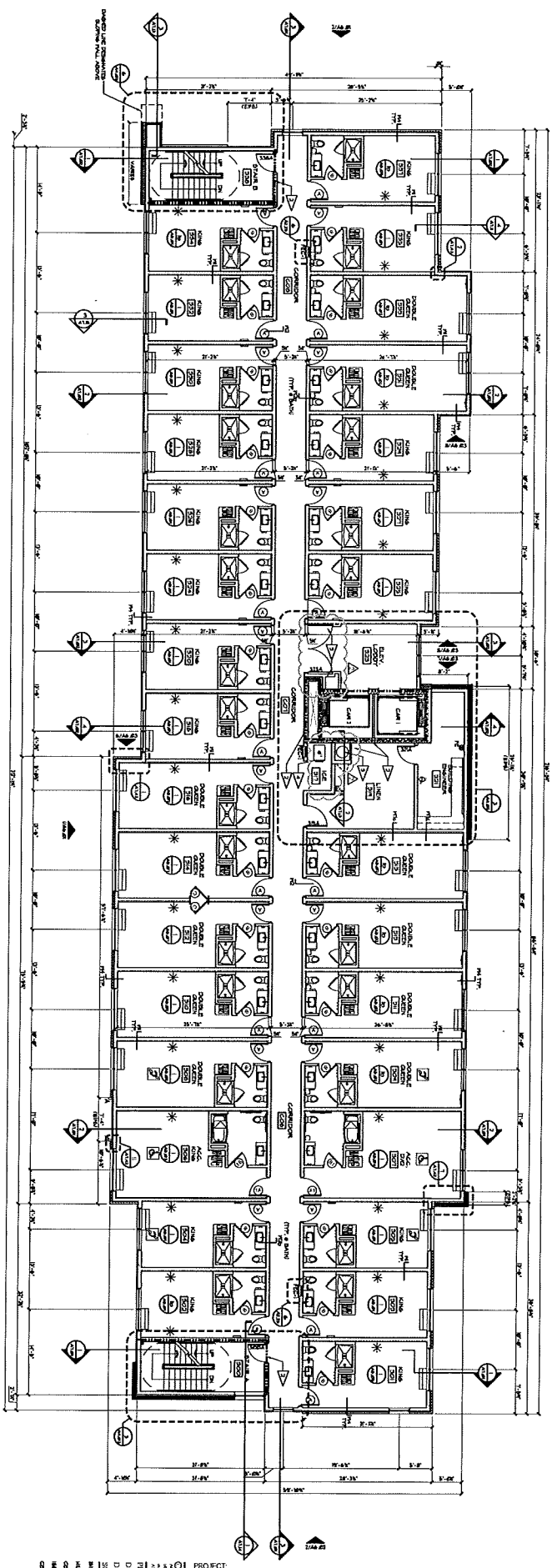


TRU
1000 N. MICHIGAN AVE.
MILWAUKEE, WI 53233
414.224.2500 FAX
414.224.2501

PROJECT: TRU by HILTON
800 W. WATTS ROAD
MILWAUKEE, WISCONSIN 53215
CLIENT: MADISON WEST PRINCETON INVESTORS I, LLC
C/O NORTH CENTRAL GROUP
1600 ASPEN COMMONS SUITE 200
MIDDLETON, WI 53552-6995

DATE: 03/12/15
DRAWN BY: MJB
CHECKED BY: AS/NATED
SCALE: AS SHOWN
SHEET NO. 02 OF 05

SECOND FLOOR PLAN
A2.02



THIRD FLOOR PLAN
Scale: 1/8" = 1'-0"

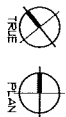
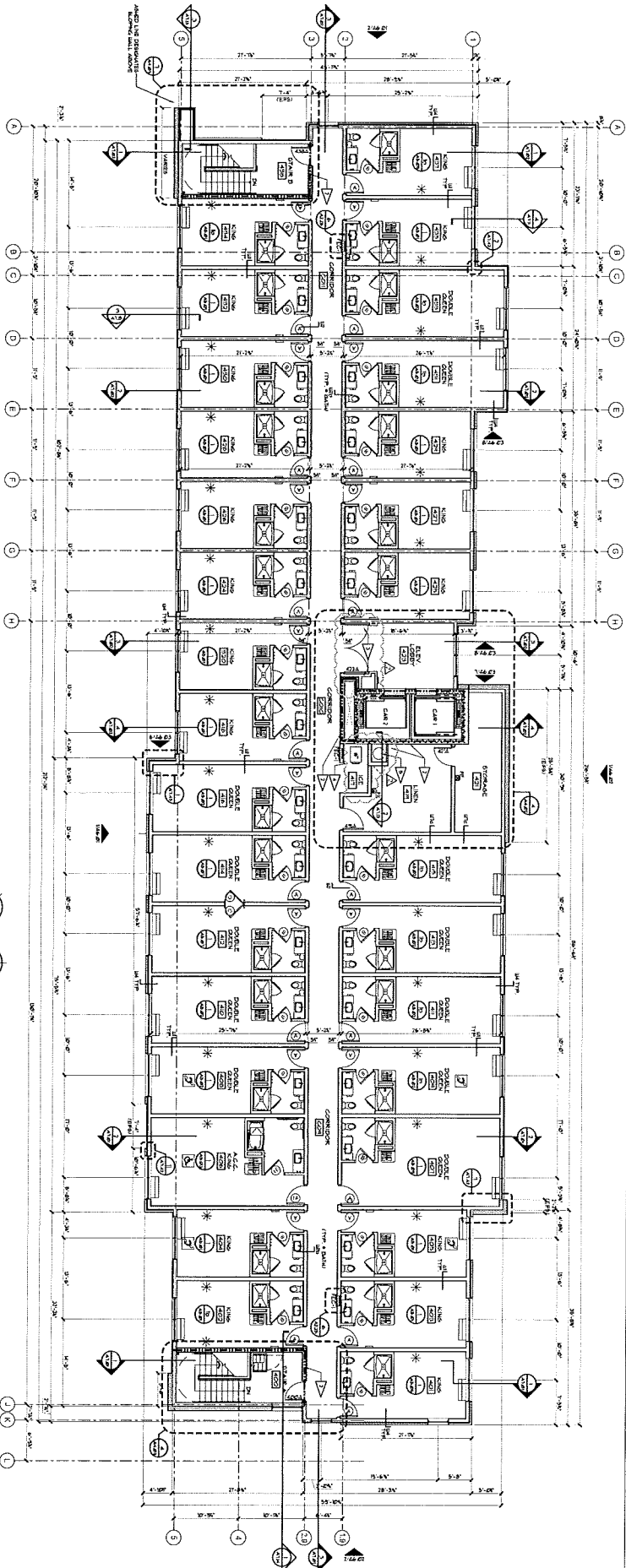
- ### FLOOR PLAN KEY NOTES
1. FLOOR PLAN KEY NOTES
 2. ROOM NUMBER PREFIX / AREA DESIGNATION
 3. ROOM NUMBER PREFIX / AREA DESIGNATION
 4. ROOM NUMBER PREFIX / AREA DESIGNATION
 5. ROOM NUMBER PREFIX / AREA DESIGNATION

- ### GENERAL PLAN NOTES
1. GENERAL PLAN NOTES
 2. GENERAL PLAN NOTES
 3. GENERAL PLAN NOTES
 4. GENERAL PLAN NOTES
 5. GENERAL PLAN NOTES
 6. GENERAL PLAN NOTES
 7. GENERAL PLAN NOTES
 8. GENERAL PLAN NOTES
 9. GENERAL PLAN NOTES
 10. GENERAL PLAN NOTES
 11. GENERAL PLAN NOTES
 12. GENERAL PLAN NOTES
 13. GENERAL PLAN NOTES
 14. GENERAL PLAN NOTES
 15. GENERAL PLAN NOTES
 16. GENERAL PLAN NOTES
 17. GENERAL PLAN NOTES
 18. GENERAL PLAN NOTES
 19. GENERAL PLAN NOTES
 20. GENERAL PLAN NOTES
 21. GENERAL PLAN NOTES
 22. GENERAL PLAN NOTES
 23. GENERAL PLAN NOTES
 24. GENERAL PLAN NOTES
 25. GENERAL PLAN NOTES
 26. GENERAL PLAN NOTES
 27. GENERAL PLAN NOTES
 28. GENERAL PLAN NOTES
 29. GENERAL PLAN NOTES
 30. GENERAL PLAN NOTES
 31. GENERAL PLAN NOTES
 32. GENERAL PLAN NOTES
 33. GENERAL PLAN NOTES
 34. GENERAL PLAN NOTES
 35. GENERAL PLAN NOTES
 36. GENERAL PLAN NOTES
 37. GENERAL PLAN NOTES
 38. GENERAL PLAN NOTES
 39. GENERAL PLAN NOTES
 40. GENERAL PLAN NOTES
 41. GENERAL PLAN NOTES
 42. GENERAL PLAN NOTES
 43. GENERAL PLAN NOTES
 44. GENERAL PLAN NOTES
 45. GENERAL PLAN NOTES
 46. GENERAL PLAN NOTES
 47. GENERAL PLAN NOTES
 48. GENERAL PLAN NOTES
 49. GENERAL PLAN NOTES
 50. GENERAL PLAN NOTES

- ### GENERAL MECHANICAL/PLUMBING NOTES
1. GENERAL MECHANICAL/PLUMBING NOTES
 2. GENERAL MECHANICAL/PLUMBING NOTES
 3. GENERAL MECHANICAL/PLUMBING NOTES
 4. GENERAL MECHANICAL/PLUMBING NOTES
 5. GENERAL MECHANICAL/PLUMBING NOTES
 6. GENERAL MECHANICAL/PLUMBING NOTES
 7. GENERAL MECHANICAL/PLUMBING NOTES
 8. GENERAL MECHANICAL/PLUMBING NOTES
 9. GENERAL MECHANICAL/PLUMBING NOTES
 10. GENERAL MECHANICAL/PLUMBING NOTES
 11. GENERAL MECHANICAL/PLUMBING NOTES
 12. GENERAL MECHANICAL/PLUMBING NOTES
 13. GENERAL MECHANICAL/PLUMBING NOTES
 14. GENERAL MECHANICAL/PLUMBING NOTES
 15. GENERAL MECHANICAL/PLUMBING NOTES
 16. GENERAL MECHANICAL/PLUMBING NOTES
 17. GENERAL MECHANICAL/PLUMBING NOTES
 18. GENERAL MECHANICAL/PLUMBING NOTES
 19. GENERAL MECHANICAL/PLUMBING NOTES
 20. GENERAL MECHANICAL/PLUMBING NOTES
 21. GENERAL MECHANICAL/PLUMBING NOTES
 22. GENERAL MECHANICAL/PLUMBING NOTES
 23. GENERAL MECHANICAL/PLUMBING NOTES
 24. GENERAL MECHANICAL/PLUMBING NOTES
 25. GENERAL MECHANICAL/PLUMBING NOTES
 26. GENERAL MECHANICAL/PLUMBING NOTES
 27. GENERAL MECHANICAL/PLUMBING NOTES
 28. GENERAL MECHANICAL/PLUMBING NOTES
 29. GENERAL MECHANICAL/PLUMBING NOTES
 30. GENERAL MECHANICAL/PLUMBING NOTES
 31. GENERAL MECHANICAL/PLUMBING NOTES
 32. GENERAL MECHANICAL/PLUMBING NOTES
 33. GENERAL MECHANICAL/PLUMBING NOTES
 34. GENERAL MECHANICAL/PLUMBING NOTES
 35. GENERAL MECHANICAL/PLUMBING NOTES
 36. GENERAL MECHANICAL/PLUMBING NOTES
 37. GENERAL MECHANICAL/PLUMBING NOTES
 38. GENERAL MECHANICAL/PLUMBING NOTES
 39. GENERAL MECHANICAL/PLUMBING NOTES
 40. GENERAL MECHANICAL/PLUMBING NOTES
 41. GENERAL MECHANICAL/PLUMBING NOTES
 42. GENERAL MECHANICAL/PLUMBING NOTES
 43. GENERAL MECHANICAL/PLUMBING NOTES
 44. GENERAL MECHANICAL/PLUMBING NOTES
 45. GENERAL MECHANICAL/PLUMBING NOTES
 46. GENERAL MECHANICAL/PLUMBING NOTES
 47. GENERAL MECHANICAL/PLUMBING NOTES
 48. GENERAL MECHANICAL/PLUMBING NOTES
 49. GENERAL MECHANICAL/PLUMBING NOTES
 50. GENERAL MECHANICAL/PLUMBING NOTES

PROJECT: TRU by HILTON
 1802 WATTS ROAD
 MADISON, WISCONSIN 53719
 CLIENT: MADISON WEST PRINCETON INVESTORS I, LLC
 CO NORTH CENTRAL GROUP
 1600 ASPEN COMMONS, SUITE 200
 MADISON, WI 53702-6994
 CONTRACT NO.: 201735
 DRAWING NO.: A2.03
 SCALE: AS SHOWN
 DATE: 08/20/17
 DESIGNED BY: [Symbol]
 CHECKED BY: [Symbol]
 DRAWN BY: [Symbol]
 IN CHARGE: [Symbol]

THE HILL GROUP
 1000 W. WISCONSIN AVENUE, SUITE 200
 MADISON, WI 53703
 (608) 258-7500
 www.thehillgroup.com



FOURTH FLOOR PLAN
SCALE: 1/8" = 1'-0"

- ### FLOOR PLAN KEY NOTES
1. ROOMS SHOWN WITH DASHED BOUNDARIES
 2. ROOMS SHOWN WITH DASHED BOUNDARIES
 3. ROOMS SHOWN WITH DASHED BOUNDARIES
 4. ROOMS SHOWN WITH DASHED BOUNDARIES
 5. ROOMS SHOWN WITH DASHED BOUNDARIES
 6. ROOMS SHOWN WITH DASHED BOUNDARIES
 7. ROOMS SHOWN WITH DASHED BOUNDARIES
 8. ROOMS SHOWN WITH DASHED BOUNDARIES
 9. ROOMS SHOWN WITH DASHED BOUNDARIES
 10. ROOMS SHOWN WITH DASHED BOUNDARIES

- ### GENERAL PLAN NOTES
1. SEE GENERAL NOTES FOR ALL MECHANICAL AND PLUMBING WORK.
 2. ALL WORK SHALL BE IN ACCORDANCE WITH THE LATEST EDITIONS OF THE MECHANICAL AND PLUMBING CODES.
 3. ALL WORK SHALL BE IN ACCORDANCE WITH THE LATEST EDITIONS OF THE NATIONAL ELECTRICAL CODE (NEC).
 4. ALL WORK SHALL BE IN ACCORDANCE WITH THE LATEST EDITIONS OF THE INTERNATIONAL MECHANICAL AND PLUMBING EXAMINERS' ASSOCIATION (IMPEA) CODES.
 5. ALL WORK SHALL BE IN ACCORDANCE WITH THE LATEST EDITIONS OF THE INTERNATIONAL MECHANICAL AND PLUMBING EXAMINERS' ASSOCIATION (IMPEA) CODES.
 6. ALL WORK SHALL BE IN ACCORDANCE WITH THE LATEST EDITIONS OF THE INTERNATIONAL MECHANICAL AND PLUMBING EXAMINERS' ASSOCIATION (IMPEA) CODES.
 7. ALL WORK SHALL BE IN ACCORDANCE WITH THE LATEST EDITIONS OF THE INTERNATIONAL MECHANICAL AND PLUMBING EXAMINERS' ASSOCIATION (IMPEA) CODES.
 8. ALL WORK SHALL BE IN ACCORDANCE WITH THE LATEST EDITIONS OF THE INTERNATIONAL MECHANICAL AND PLUMBING EXAMINERS' ASSOCIATION (IMPEA) CODES.
 9. ALL WORK SHALL BE IN ACCORDANCE WITH THE LATEST EDITIONS OF THE INTERNATIONAL MECHANICAL AND PLUMBING EXAMINERS' ASSOCIATION (IMPEA) CODES.
 10. ALL WORK SHALL BE IN ACCORDANCE WITH THE LATEST EDITIONS OF THE INTERNATIONAL MECHANICAL AND PLUMBING EXAMINERS' ASSOCIATION (IMPEA) CODES.

- ### GENERAL MECHANICAL / PLUMBING NOTES
- #### REFERENCE NOTES
1. SEE GENERAL NOTES FOR ALL MECHANICAL AND PLUMBING WORK.
 2. ALL WORK SHALL BE IN ACCORDANCE WITH THE LATEST EDITIONS OF THE MECHANICAL AND PLUMBING CODES.
 3. ALL WORK SHALL BE IN ACCORDANCE WITH THE LATEST EDITIONS OF THE NATIONAL ELECTRICAL CODE (NEC).
 4. ALL WORK SHALL BE IN ACCORDANCE WITH THE LATEST EDITIONS OF THE INTERNATIONAL MECHANICAL AND PLUMBING EXAMINERS' ASSOCIATION (IMPEA) CODES.
 5. ALL WORK SHALL BE IN ACCORDANCE WITH THE LATEST EDITIONS OF THE INTERNATIONAL MECHANICAL AND PLUMBING EXAMINERS' ASSOCIATION (IMPEA) CODES.
 6. ALL WORK SHALL BE IN ACCORDANCE WITH THE LATEST EDITIONS OF THE INTERNATIONAL MECHANICAL AND PLUMBING EXAMINERS' ASSOCIATION (IMPEA) CODES.
 7. ALL WORK SHALL BE IN ACCORDANCE WITH THE LATEST EDITIONS OF THE INTERNATIONAL MECHANICAL AND PLUMBING EXAMINERS' ASSOCIATION (IMPEA) CODES.
 8. ALL WORK SHALL BE IN ACCORDANCE WITH THE LATEST EDITIONS OF THE INTERNATIONAL MECHANICAL AND PLUMBING EXAMINERS' ASSOCIATION (IMPEA) CODES.
 9. ALL WORK SHALL BE IN ACCORDANCE WITH THE LATEST EDITIONS OF THE INTERNATIONAL MECHANICAL AND PLUMBING EXAMINERS' ASSOCIATION (IMPEA) CODES.
 10. ALL WORK SHALL BE IN ACCORDANCE WITH THE LATEST EDITIONS OF THE INTERNATIONAL MECHANICAL AND PLUMBING EXAMINERS' ASSOCIATION (IMPEA) CODES.
- #### PLAN SYMBOLS
- 1. MECHANICAL SYMBOLS: [Symbol] MECHANICAL SYMBOL
 - 2. PLUMBING SYMBOLS: [Symbol] PLUMBING SYMBOL
 - 3. ELECTRICAL SYMBOLS: [Symbol] ELECTRICAL SYMBOL
 - 4. FIRE ALARM SYMBOLS: [Symbol] FIRE ALARM SYMBOL

PROJECT: TRU by HILTON
500 WALL STREET
MADISON, WISCONSIN 53701
CLIENT: MADISON WEST PRINCETON INVESTORS I, LLC
C/O NORTH CENTRAL GROUP
1515 EAST WISCONSIN AVENUE
MADISON, WI 53702-2924

DATE: 08/14/2013
DRAWN BY: [Name]
CHECKED BY: [Name]
SCALE: AS SHOWN
SHEET: 10 OF 10
PROJECT: TRU by HILTON
500 WALL STREET
MADISON, WISCONSIN 53701
CLIENT: MADISON WEST PRINCETON INVESTORS I, LLC
C/O NORTH CENTRAL GROUP
1515 EAST WISCONSIN AVENUE
MADISON, WI 53702-2924

