

## MEMO

**TO:** Madison Board of Park Commissioners

**CC:** Lisa Laschinger, Assistant Parks Superintendent, City of Madison Parks Division  
Jessica Knackert, DNR Snapshot Wisconsin Volunteer Coordinator

**FROM:** Hope Nye, DNR Snapshot Wisconsin Volunteer

**DATE:** June 27, 2022

**SUBJECT:** Placement of DNR Snapshot Wisconsin Trail Camera in Warner Park

### Program Summary Description

[DNR Snapshot Wisconsin](#) monitors wildlife year-round using a statewide network of trail cameras. The project provides data needed for wildlife management decision support. The main goals of Snapshot Wisconsin are to:

1. provide data necessary for wildlife management decisions by monitoring wildlife more consistently across the state and throughout the year, and
2. increase public engagement with Wisconsin's natural resources and the DNR.

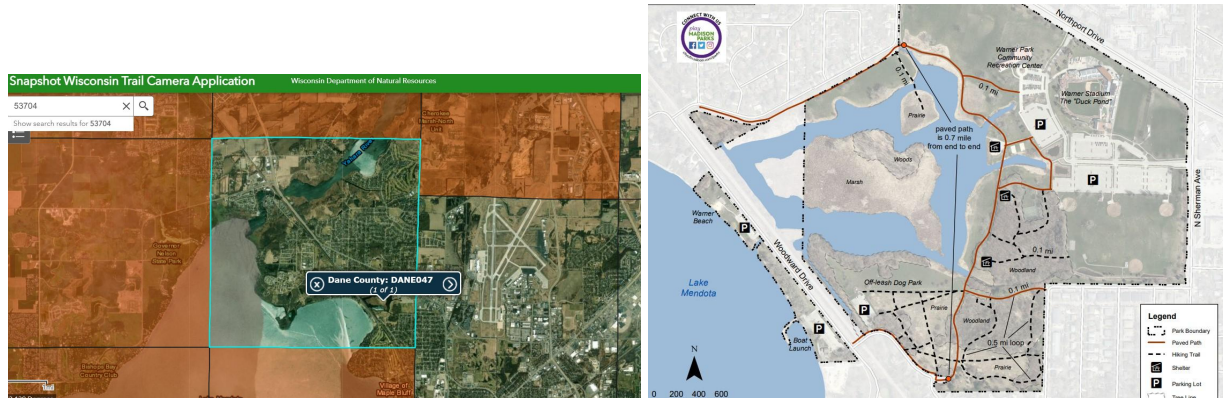
### Purpose of Wildlife Monitoring

Snapshot Wisconsin volunteers identify and count the animals in photos. We use this information, along with where and when each photo was taken, to understand wildlife population distributions across Wisconsin and how these distributions change over time. Snapshot Wisconsin allows us to continuously monitor all types of wildlife throughout the year. For example, we use photos of fawns and does in the late summer to calculate fawn-to-doe ratios, which contribute to our understanding of deer population size. Elk photos are similarly used to estimate calf-to-cow ratios and population size, and turkey photos are used to estimate hen-to-poult ratios. Photos of whooping cranes, moose, cougars and marten give us confirmed locations of these rare species. Project photos are also used for educational and outreach purposes, helping community members of all ages to experience firsthand the fauna of Wisconsin's wildlands.

### Camera Location

One camera would be placed in [Block DANE047](#), approximately three feet high on a tree trunk in a woodland section of [Warner Park](#), away from common foot traffic routes (e.g. paved or dirt paths) to increase likelihood of signs of wildlife. The DNR never shares the exact location of trail camera photos with the public to avoid tampering. Exact placement cannot be determined at this stage as it depends on tree density and plant height. but DNR Snapshot Wisconsin can provide the exact coordinates (latitude, longitude; photographic evidence; and physical

description of placement) to the city parks board when placed. The cameras are enclosed in a locked, bear-proof box that only DNR staff and volunteers can access, and SD card files are encrypted so they can only be accessed through the DNR system.



## Privacy

Snapshot Wisconsin trail cameras only collect pictures, so no videos will be captured. Any photos of humans that are captured by the trail camera are never shared with the public. The volunteer who hosts the trail camera for Snapshot Wisconsin has the ability to classify a photo as showing a human. The Snapshot team also reviews all photos and makes sure to tag any unmarked human photos that may come through. This removes the human photos from any further analysis and prevents them from being shared with the public on our Zooniverse page. Photos collected by Snapshot Wisconsin cameras are made available on [Zooniverse](https://www.zooniverse.org/), a crowd sourcing website for citizen science projects. Thousands of volunteers worldwide participate in Zooniverse by identifying wildlife captured in Snapshot Wisconsin photos. With multiple volunteers viewing each image, a highly accurate consensus is reached for each photo. One additional point I will mention is that we are also happy to set up a View Only account connected to the camera for anyone on the Board who wishes to see the photos collected by the trail camera. If the Board finds the camera is catching too much human traffic (which is something we also keep an eye out for as this can impact natural animal movement), we can work on having you deploy the camera in another area of the property.

The camera will be placed where no human objects are visible to the camera, including roads, buildings, benches, etc. The main reason is so that if the photos are sent to Zooniverse to be classified by the public, the location is not identifiable. If a volunteer's photos display a human object, these photos are filtered out by Snapshot staff during our photo review process, and we will reach out to the volunteer requesting that they adjust the camera's location so that no human objects are shown.

## Additional questions can be directed to:

Jessica Knackert, Snapshot Wisconsin Volunteer Coordinator  
[DNRSnapshotWisconsin@wisconsin.gov](mailto:DNRSnapshotWisconsin@wisconsin.gov) (608) 572-6103