

# City of Madison Urban Forestry Task Force Draft Discussion and Listening Session

May 15, 2019



# Agenda

- Background
- Draft Recommendations
- Next Steps
- Questions/Comments/Discussion



# Urban Forestry Task Force Background

- Review available research and best practices on promoting a vibrant, healthy and sustainable urban forest
- Review City policies, practices, programs, and operations
- Task force comprised of alders, staff from Forestry, Engineering, Planning, residents





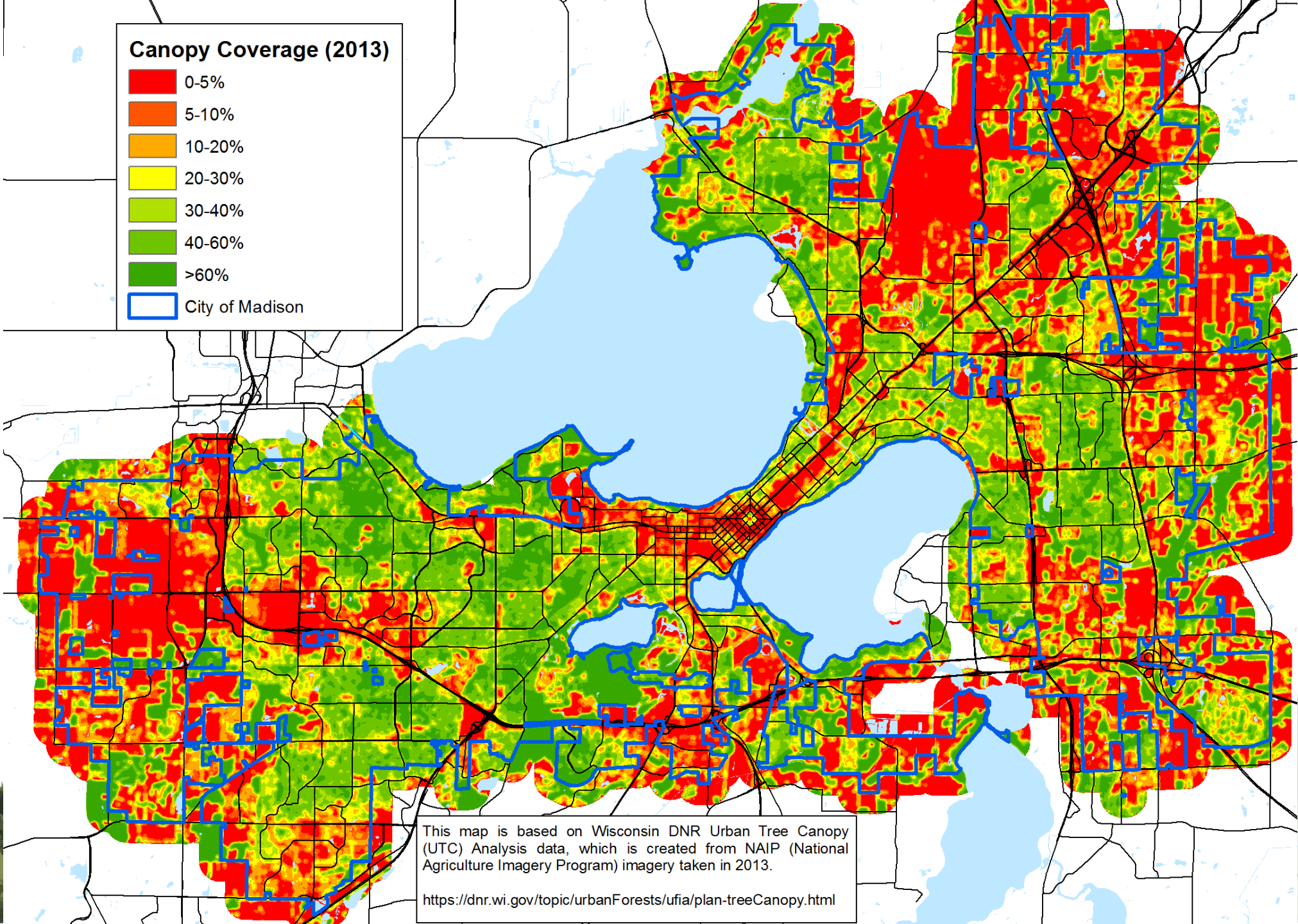
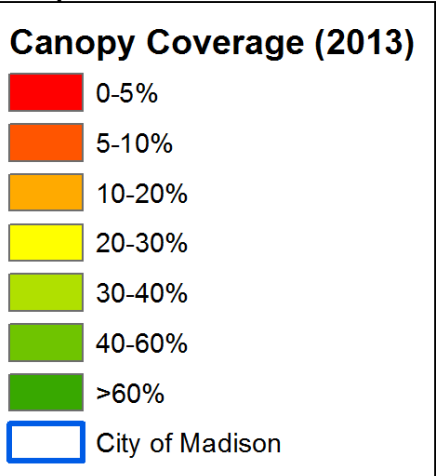
# Value of Trees

- Neighborhood character and appearance
- Temperature reduction
- Stormwater
- CO<sub>2</sub> and air pollution reduction
- Urban habitat





# Canopy Coverage



This map is based on Wisconsin DNR Urban Tree Canopy (UTC) Analysis data, which is created from NAIP (National Agriculture Imagery Program) imagery taken in 2013.

<https://dnr.wi.gov/topic/urbanForests/ufia/plan-treeCanopy.html>



# Context of Trees in Madison

- Trees on Private Property
- Trees on Public Properties
- Street trees (in right of way)





# Private Trees - Zoning

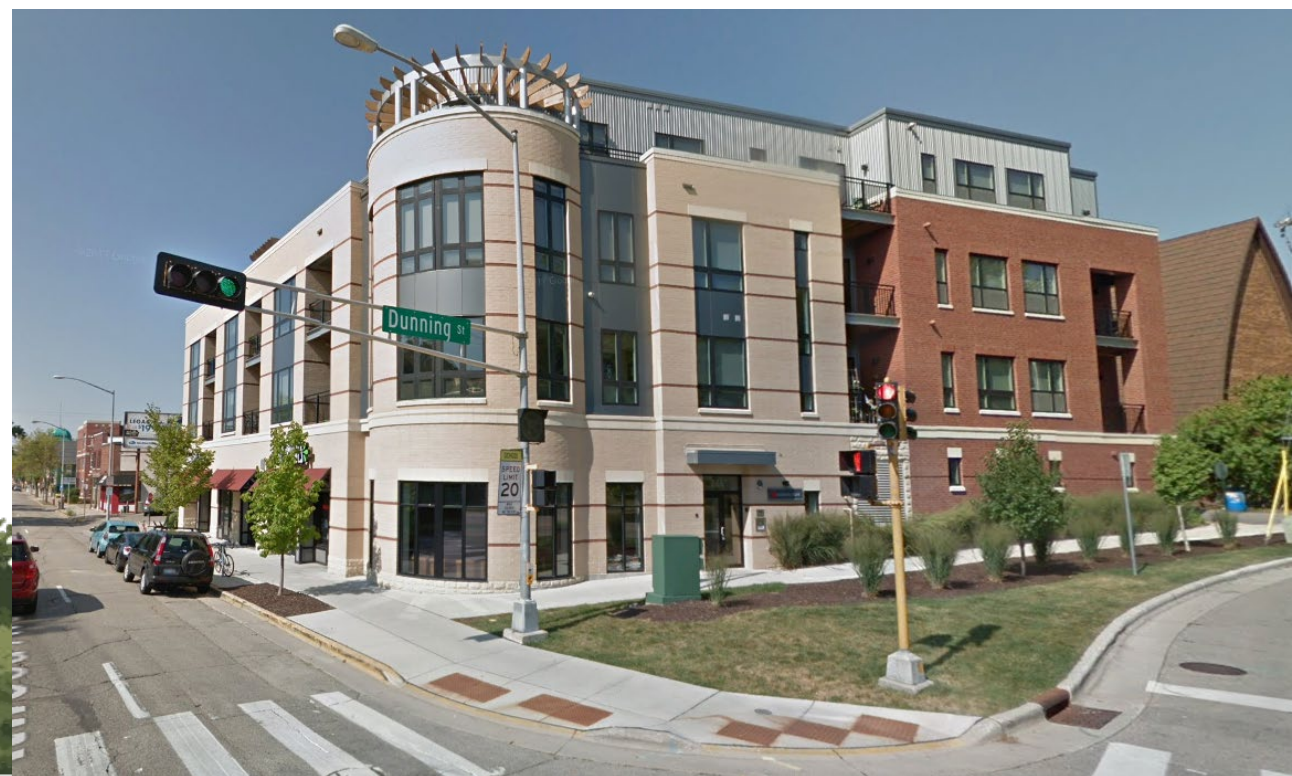
- Landscape Section - *Updated in 2013*
  - Parking area landscaping
    - 5 or 8% of parking area in landscape islands
    - Roughly one tree per 8-10 parking stalls
- No trees required in parking lots prior to 1984 – legal non-conforming (grandfathered)
- *Recommendation: Evaluated applicability triggers in landscape section*





# Private Trees - Zoning

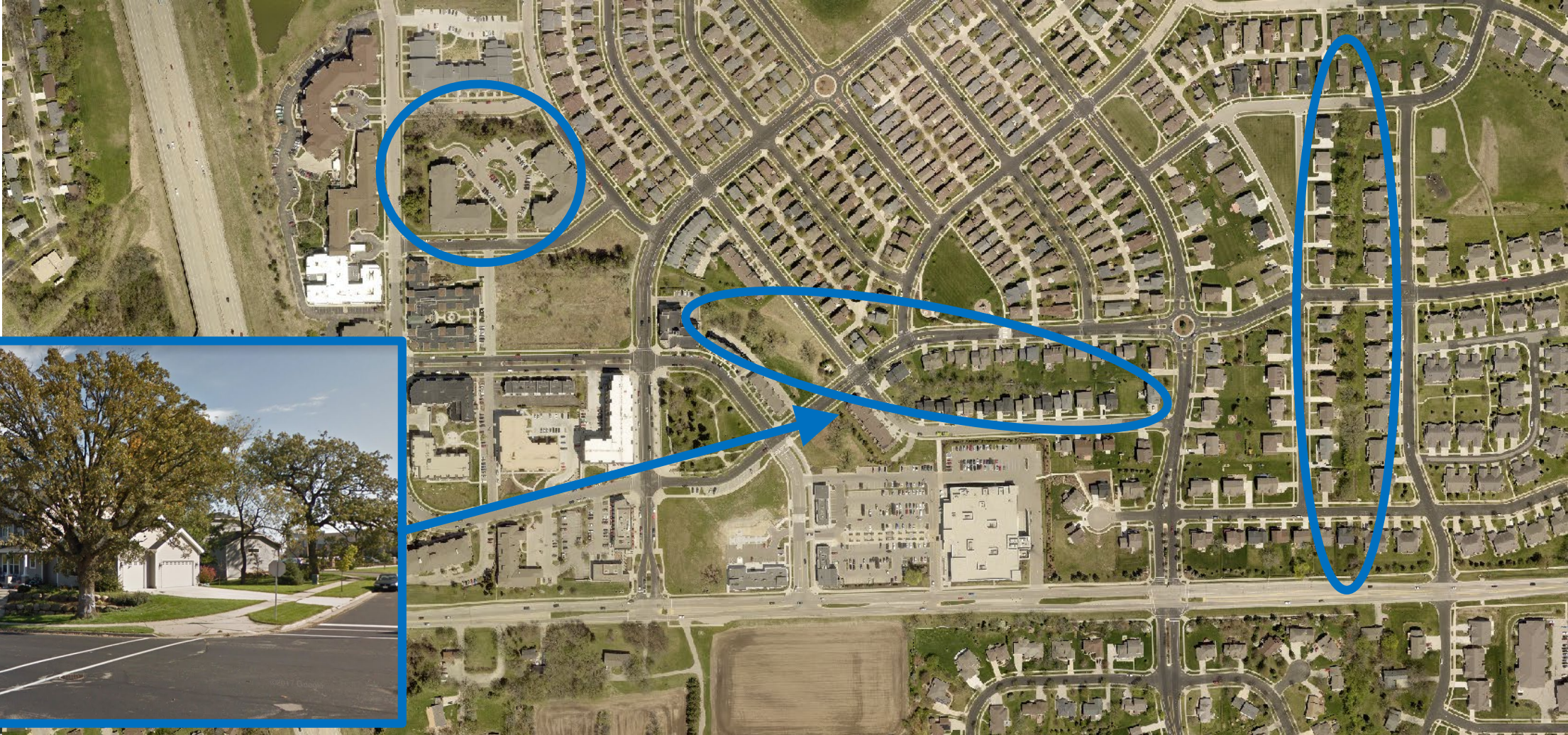
- Landscape Section - *Updated in 2013*
  - Development Frontage Landscaping
    - One tree required every 30 ft between development edge (building, parking, etc.) and public street
    - *Waived when buildings are at street*
  - Mixed use and downtown zoning districts require minimal setbacks
    - Limited space for trees on private property near streets
  - *Recommendation: Evaluate minimum setback to determine if adjustments are needed*





# Private Trees - Zoning

- Tree preservation encouraged but not required by zoning and subdivision codes
- *Recommendation: evaluate tree preservation ordinance*





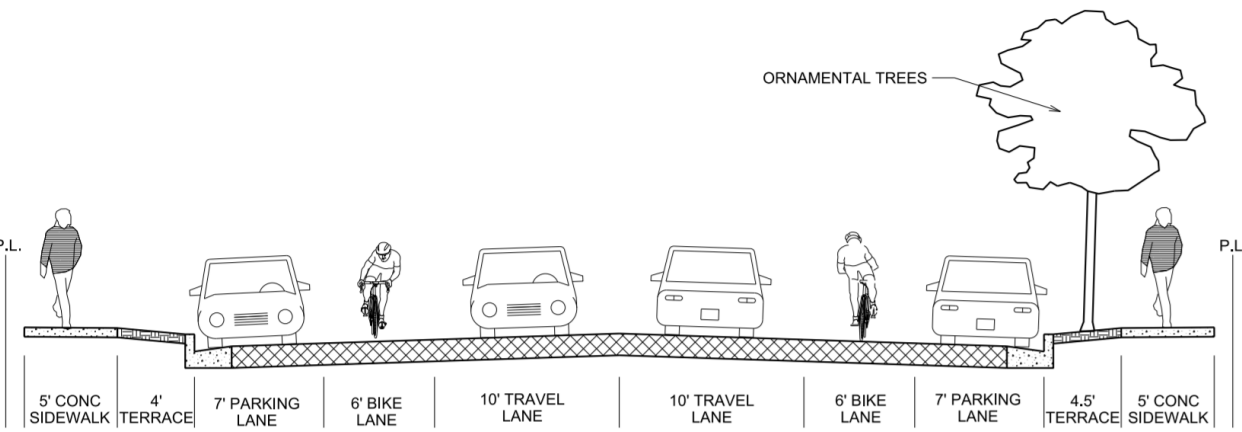
# Private Trees – Single Family Homes

- No tree/landscape requirements for one and two family homes in zoning code
- *Recommendation: Evaluate other mechanism to encourage tree plantings on new lots, such as neighborhood covenants*

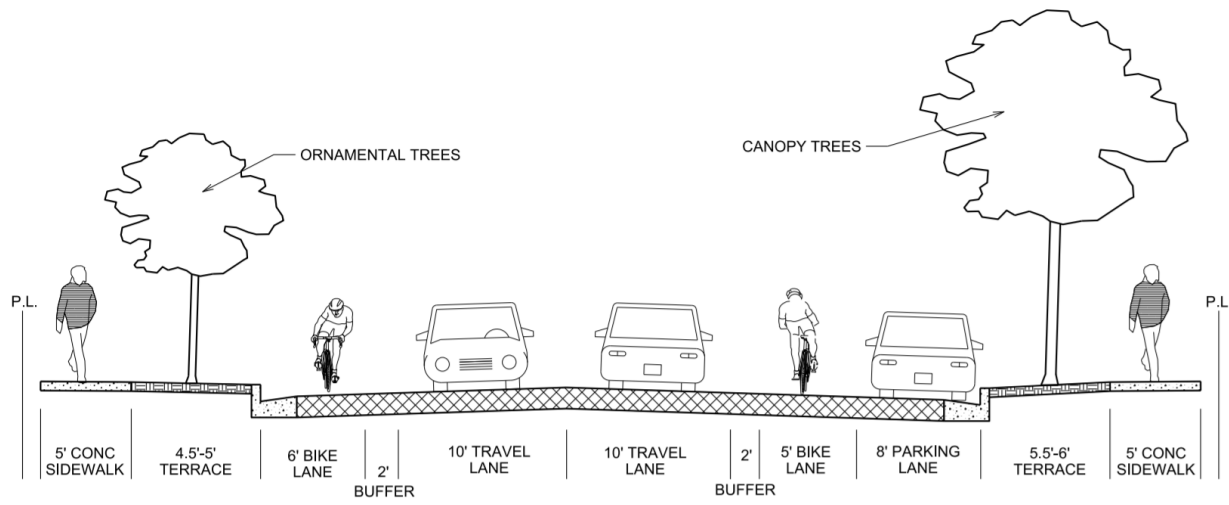




# Street Trees – a contest for space



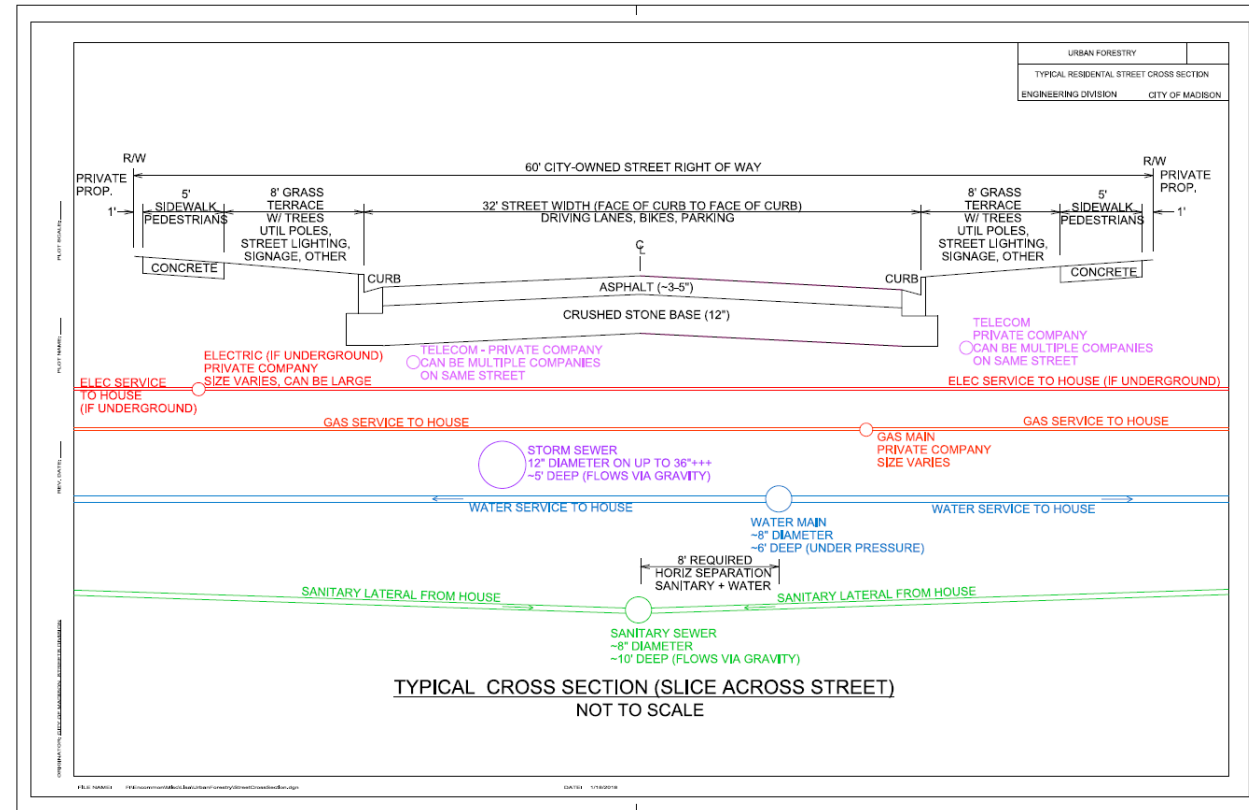
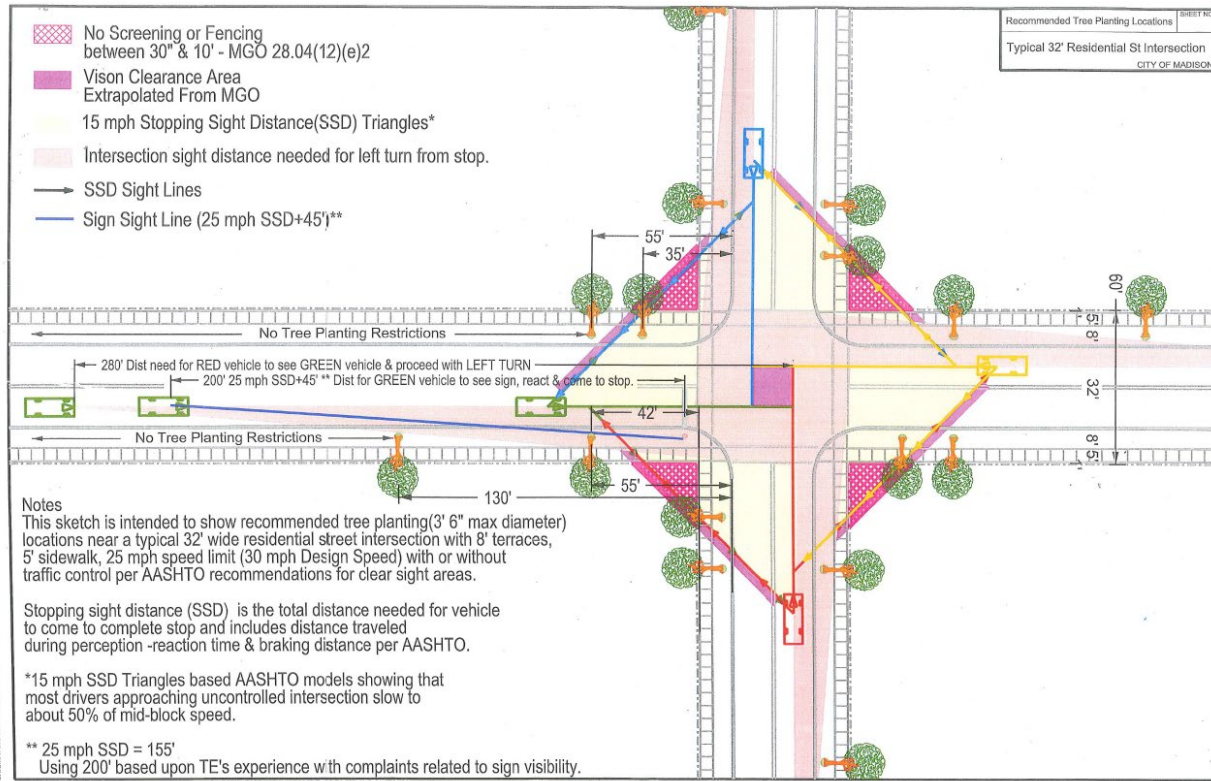
WINNEBAGO STREET - OPTION 1  
(LOOKING NORTHEAST)



WINNEBAGO STREET - OPTION 2  
(LOOKING NORTHEAST)



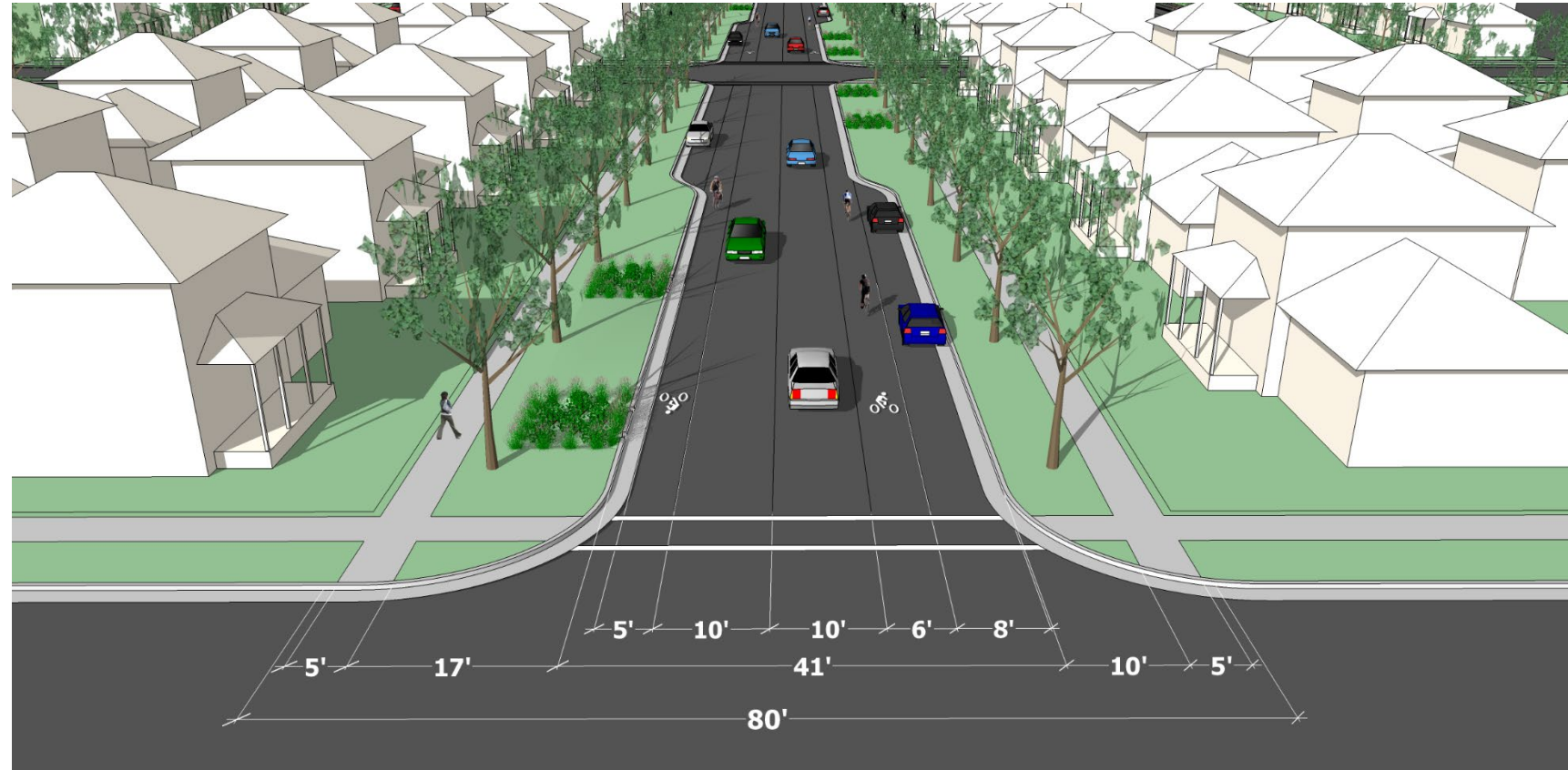
# Street Trees – a contest for space





# Street Trees – new streets

- *Recommendation:*  
*Expanded minimum terrace widths for new streets*
  - *Local streets: 10 ft*
  - *Collector streets: 10 ft*
  - *Arterial streets: 12 ft*





# Street Trees – existing street reconstructions

- *Recommendation: explore alternative designs with engineered soil volume construction methods and terrace support systems*

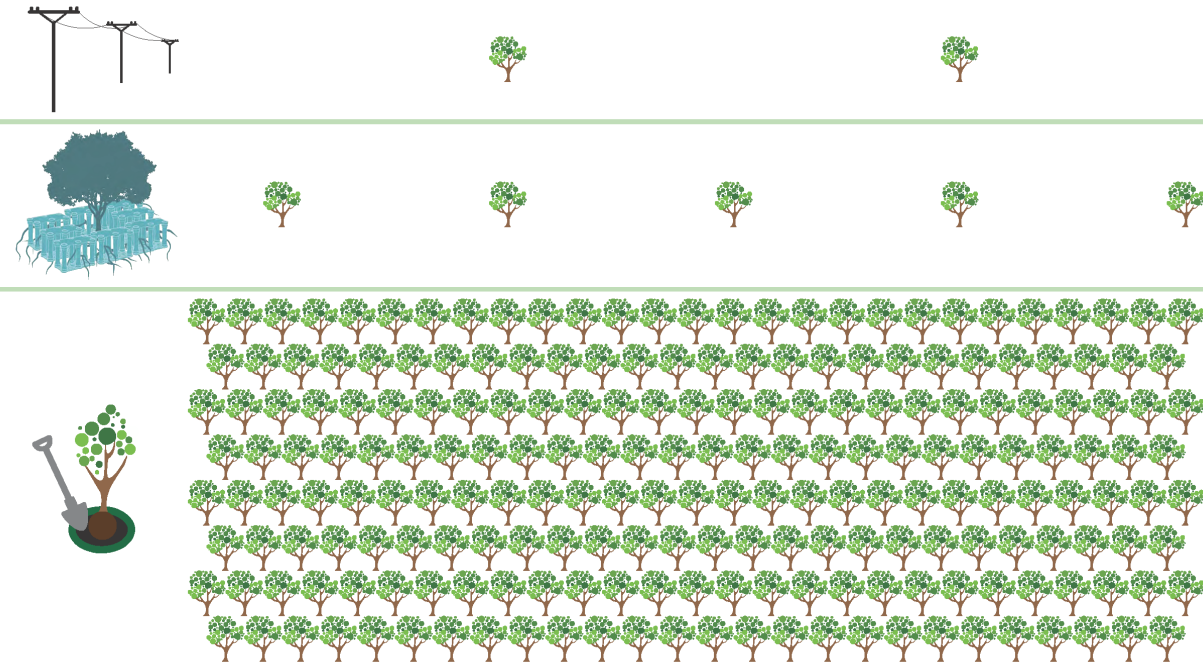




# Street Trees – undergrounding utilities

- *Recommendation: undergrounding policy criteria should be amended to account for the impact of overhead utility lines on city terrace trees*

**STRATEGIES FOR EXPANDING THE URBAN CANOPY**  
COMPARING THE IMPACTS OF UNDERGROUNDING UTILITIES, SILVA CELLS AND SPONSORED TREE PLANTING ON PRIVATE PROPERTY BASED ON EQUAL EXPENDITURES.  
ASSUMES \$500/FT FOR UNDERGROUNDING, \$10,000 PER SILVA CELL, \$250 PER TREE





# Street Trees – redevelopment and staging

- *Recommendation: increase costs associated with street tree removal*
- *Recommendation: trees removed should be replaced in enhanced conditions, at the cost of the developer*

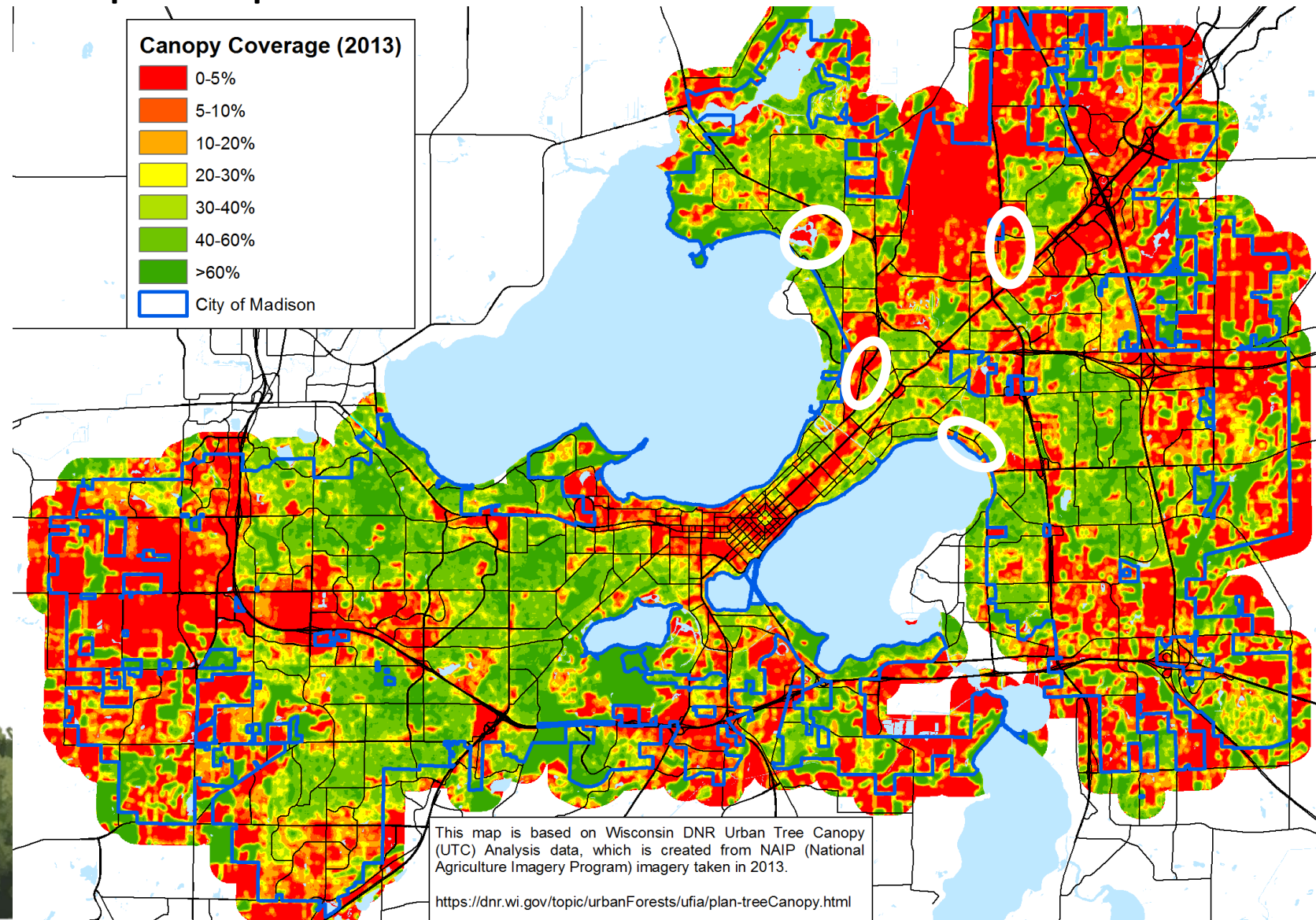




# Public Trees/Forestry Operations - Parks

- Many competing interests for park space
  - Athletic fields
  - Garden plots
  - Sledding hills

• *Recommendation:*  
*Work with Parks to*  
*identify potential*  
*tree planting*  
*locations*



# Public Trees/Forestry Operations - Greenways (stormwater)

- Typically planted with prairie grasses
- Trees in past have been problematic
  - Tree shade inhibits grass growth, leading to bare soil
  - Erosion occurs without ground cover
- *Recommendation: Forestry and Engineering work collaboratively to identify appropriate tree planting strategies in greenways*





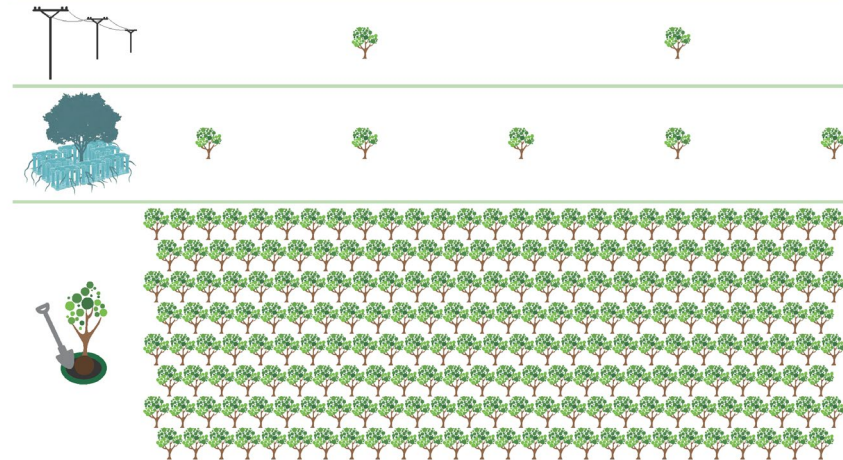
# Outreach & Education

- *Recommendation: develop an Urban Forest Outreach Initiative - public education and coordination of events and volunteers*
- *Recommendations: create a grant program that provides trees to be planted on private property*



## STRATEGIES FOR EXPANDING THE URBAN CANOPY

COMPARING THE IMPACTS OF UNDERGROUNDING UTILITIES, SILVA CELLS AND SPONSORED TREE PLANTING ON PRIVATE PROPERTY BASED ON EQUAL EXPENDITURES.  
ASSUMES \$900/FT FOR UNDERGROUNDING, \$10,000 PER SILVA CELL, \$250 PER TREE





# Equity

- Low-income communities often lack canopy
- *Recommendation: consider subsidies for street or private trees in lower-income areas and neighborhoods that have not historically had street trees*





# Next Steps

- Urban Forestry Task Force – May 30
  - Finalize draft
- Begin City review and approval process
  - Sustainable Madison Commission
  - Habitat Stewardship Committee
  - Board of Park Commissioners
  - Board of Public Works
  - Plan Commission
  - Common Council





# Questions – Comments - Discussion

