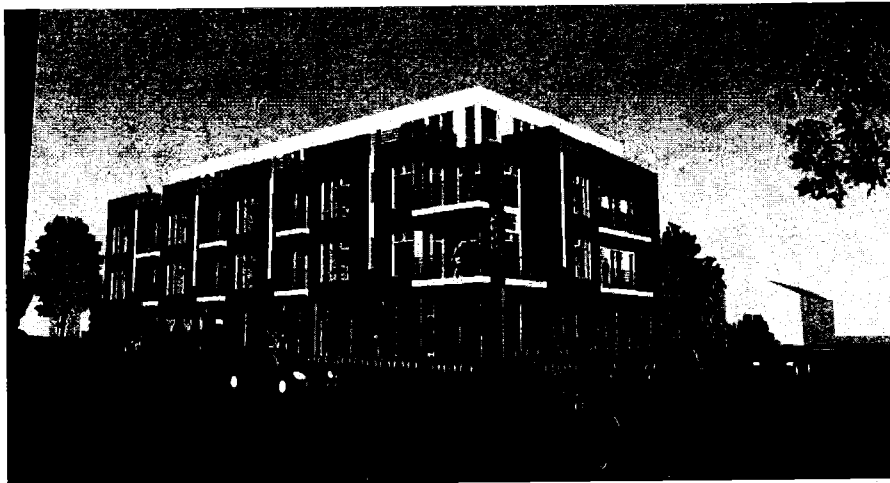


3414 MONROE STREET – SCALE AND MASSING

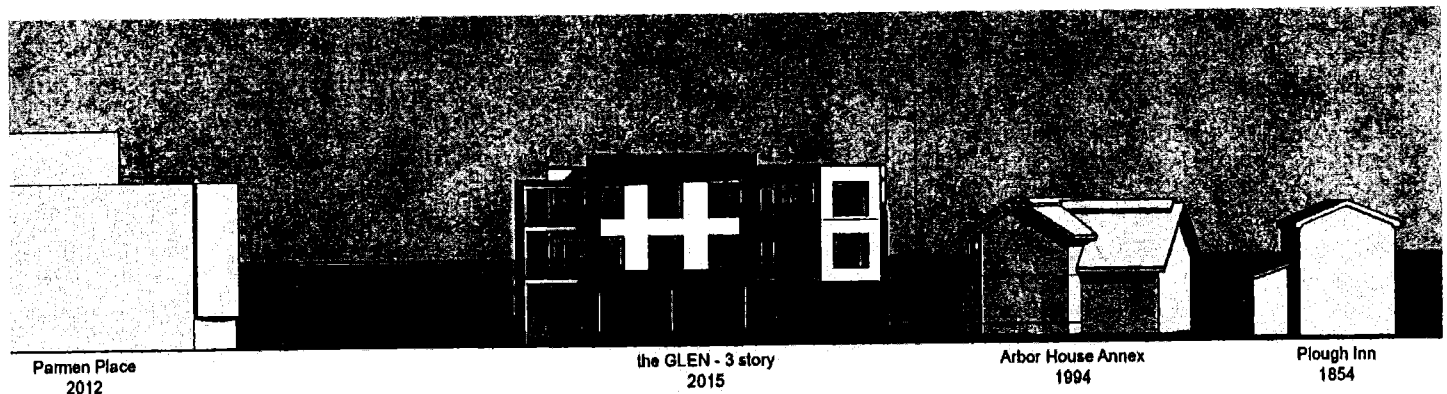
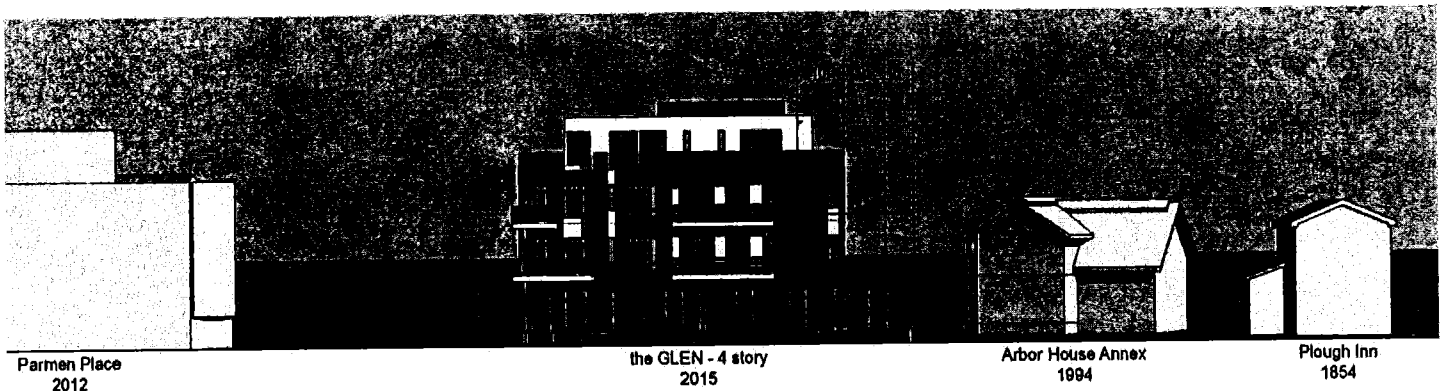


Building from Glenway Street and Monroe Street

CURRENT PROPOSAL

- Above grade SF is 32% larger than Parmen Place (excludes underground or covered parking)
- Building height with 4th story is approximately 10' taller than original proposal and 5' taller than 3rd floor of Parmen Place

SCALE AND SETBACK COMPARISONS, CURRENT (top) vs ORIGINAL PROPOSAL:



Comparison of 4 story setback along east property line as it relates to previous proposed 3 story

Illustrations from CaS4 Architecture Submittal to Landmarks Commission on Feb 9, 2015

WAL 4-8-15 Handout No. 8