





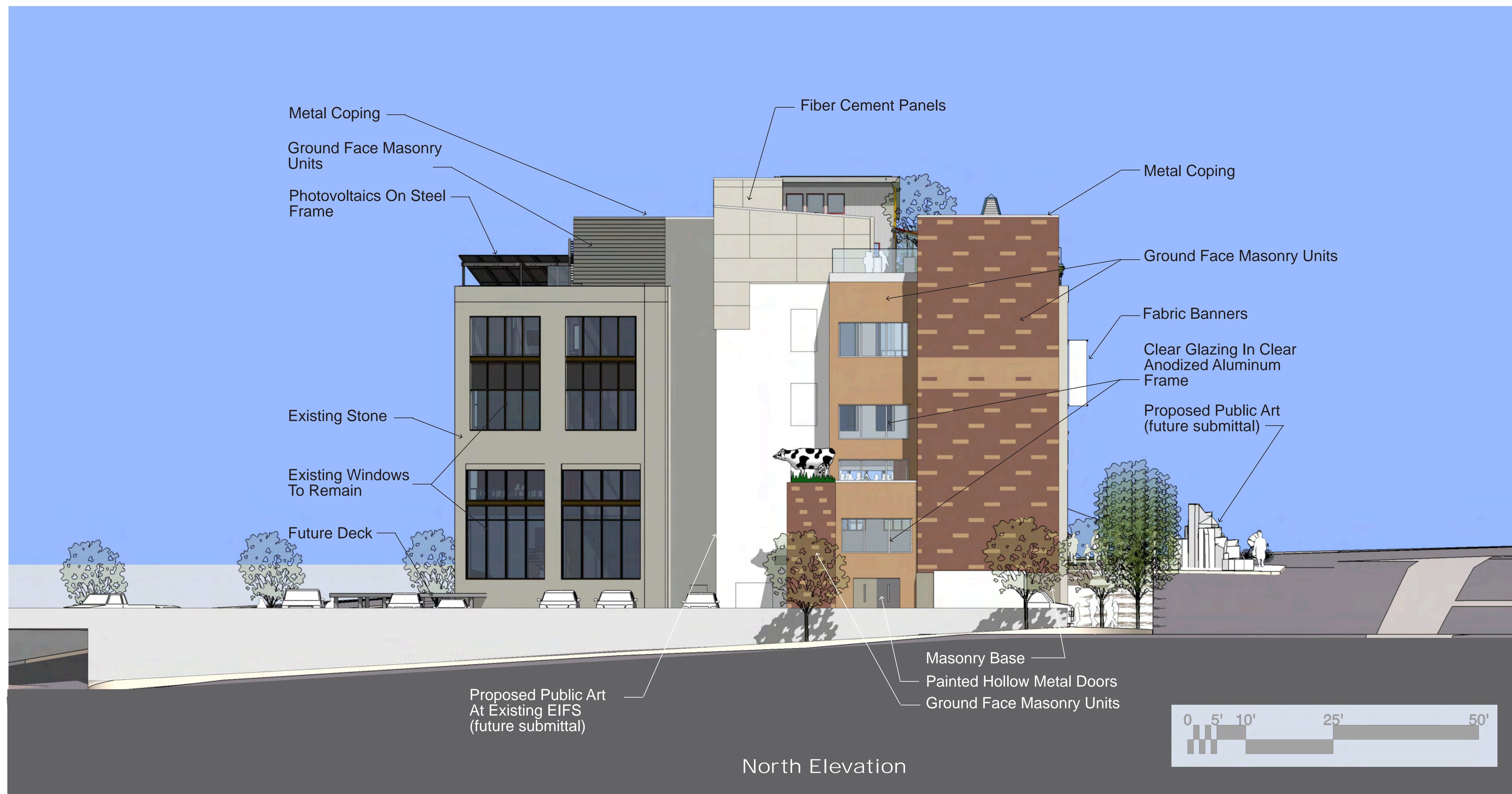
Birdseye View Of Rooftop



View From Pinkney Street



Entry From Parking Lot





View From Hamilton Street



Rooftop



Rooftop



East Elevation



View From Capitol

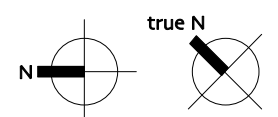
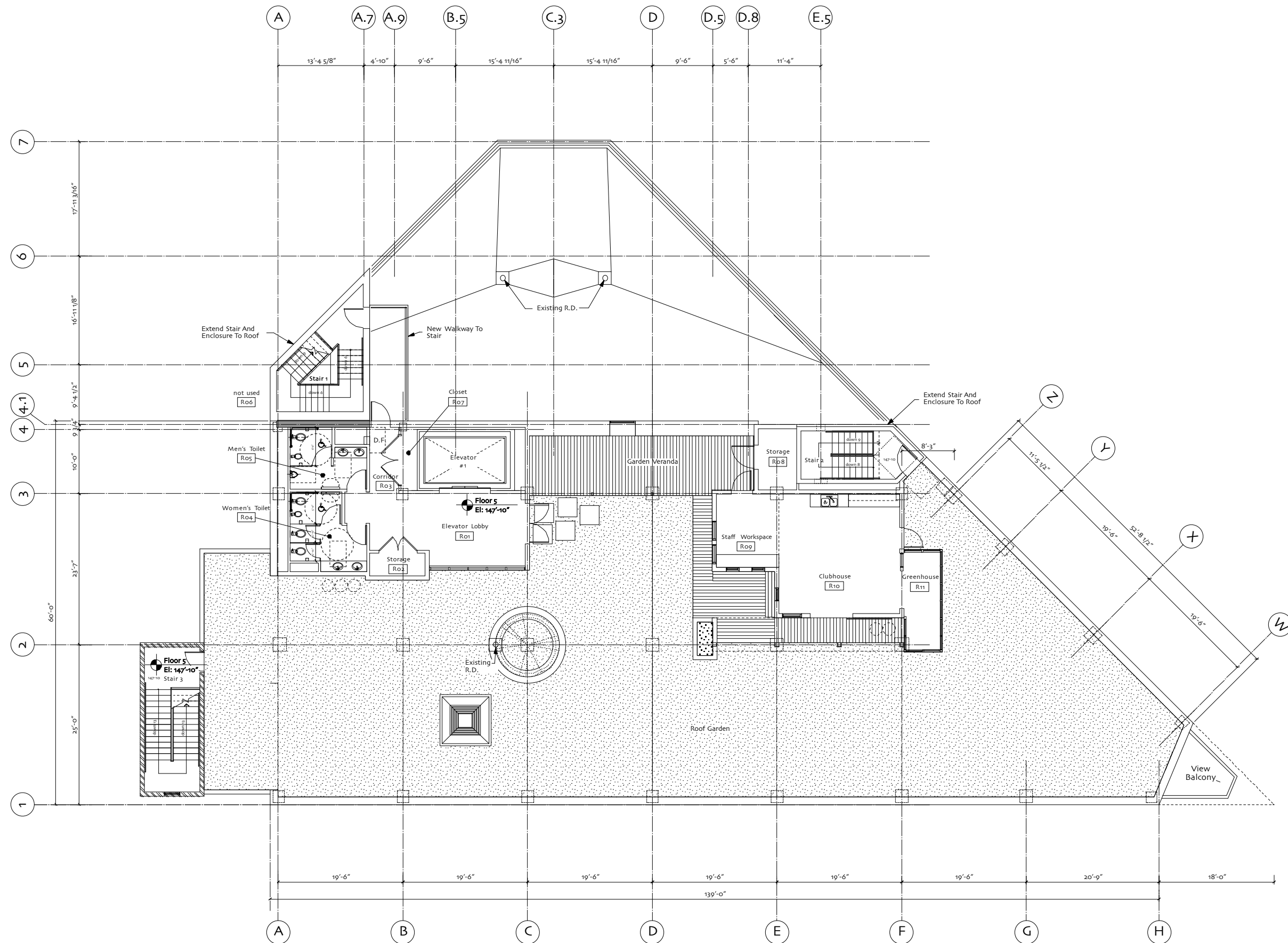


Birdseye View Of Rooftop

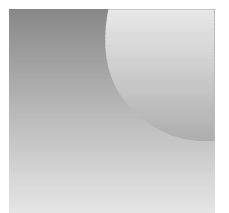


Birdseye View Of Rooftop





1 Roof Plan
Scale: 1/8" = 1'-0"



THE
KUBALA WASHATKO
ARCHITECTS
INC

W61 N617 Mequon Avenue
Cedarburg, WI 53012-2017
tel: 262.377.6039
fax: 262.377.2954

PROJECT

Madison Children's Museum

100 N. Hamilton
Madison, WI 53703

OWNER

Madison Children's Museum

100 North Hamilton
Madison, WI 53703

CONSTRUCTION MANAGER

J. H. Findorff & Son, Inc.
300 S. Bedford Street
Madison, WI 53703
Tel: 608.257.5321

CONSULTANT(S)

REVISIONS

DATE

October 8, 2008

PROJECT NUMBER

162805

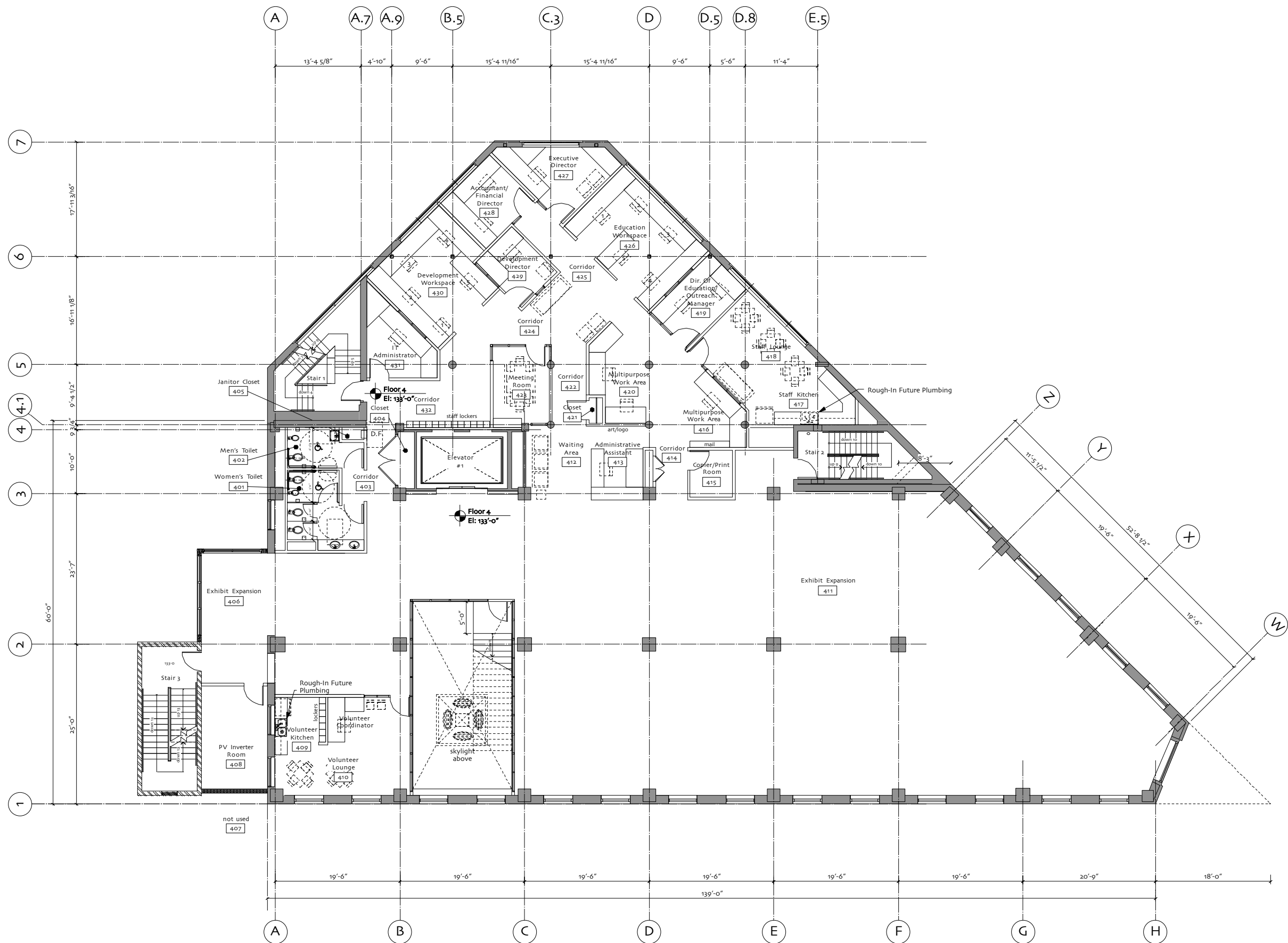
SHEET TITLE

Roof Plan

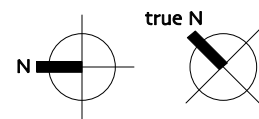
SHEET NUMBER

A1.5

Copyright © 2008 The Kubala Washatko Architects, Inc.
All Rights Reserved



5 Floor 4 Plan (el: 133'-0")
 A1.4 Scale: 1/8"=1'-0"



MASTER PLAN

THE
KUBALA WASHATKO
 ARCHITECTS
 INC.

W61 N617 Mequon Avenue
 Cedarburg, WI 53012-2017
 tel: 262.377.6039
 fax: 262.377.2954

PROJECT

Madison Children's Museum

100 N. Hamilton
 Madison, WI 53703

OWNER

Madison Children's Museum

100 North Hamilton
 Madison, WI 53703

CONSTRUCTION MANAGER

J. H. Findorff & Son, Inc.
 300 S. Bedford Street
 Madison, WI 53703
 Tel: 608.257.5321

CONSULTANT(S)

REVISIONS

NO.	DESCRIPTION	DATE

DATE

October 8, 2008

PROJECT NUMBER

162805

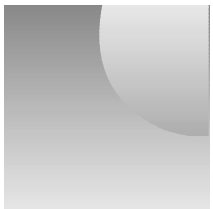
SHEET TITLE

Floor 4 Plan

SHEET NUMBER

A1.4

Copyright © 2008 The Kubala Washatko Architects, Inc. All Rights Reserved.



THE KUBALA WASHATKO ARCHITECTS INC.

W61 N617 Mequon Avenue
 Cedarburg, WI 53012-2017
 tel: 262.377.6039
 fax: 262.377.2954

PROJECT

Madison Children's Museum

100 N. Hamilton
 Madison, WI 53703

OWNER

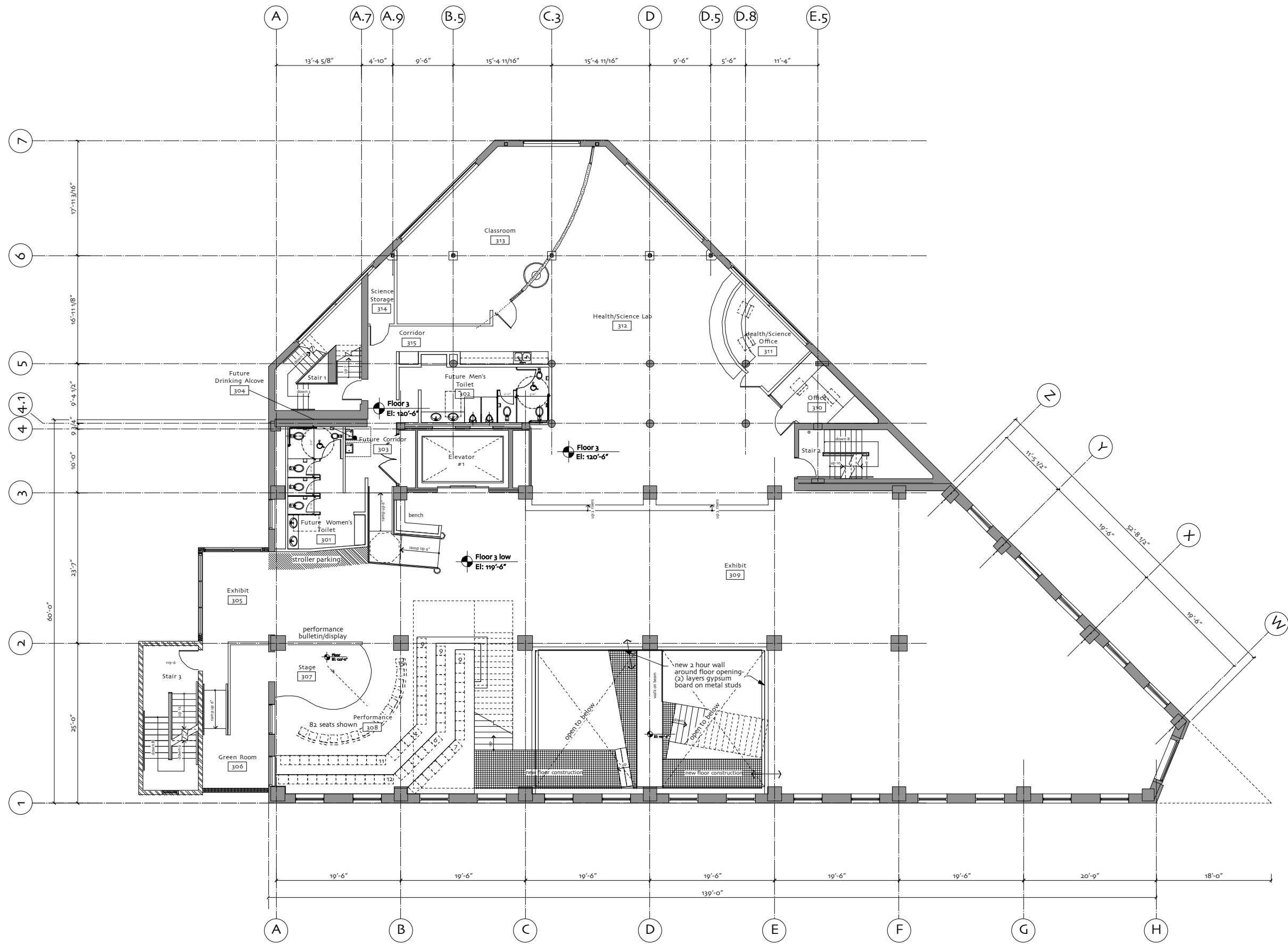
Madison Children's Museum

100 North Hamilton
 Madison, WI 53703

CONSTRUCTION MANAGER

J. H. Findorff & Son, Inc.
 300 S. Bedford Street
 Madison, WI 53703
 Tel: 608.257.5321

CONSULTANT(S)



REVISIONS

NO.	DATE	DESCRIPTION

DATE

October 8, 2008

PROJECT NUMBER

162805

SHEET TITLE

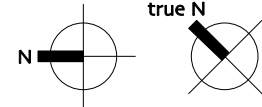
Floor 3 Plan

SHEET NUMBER

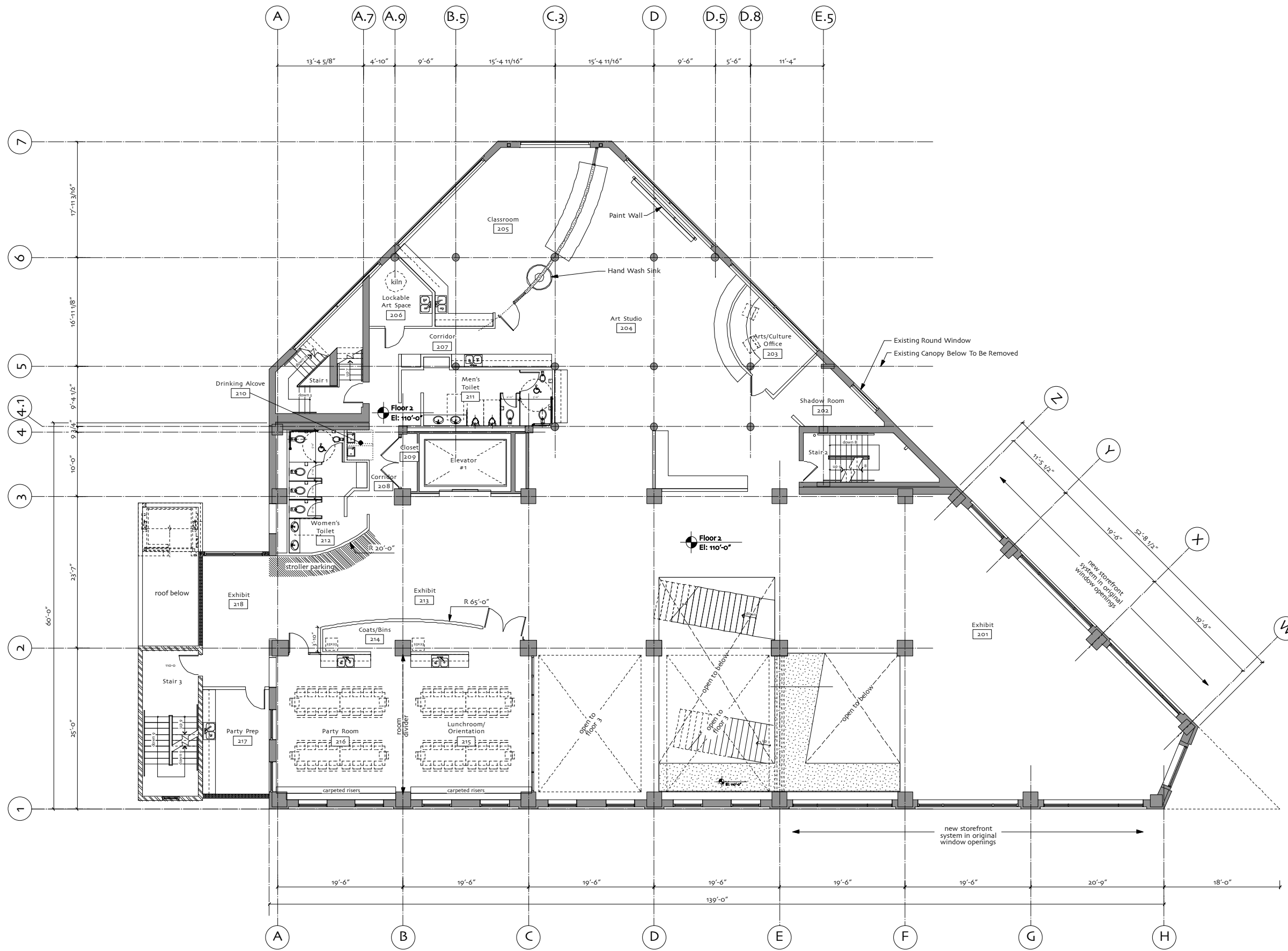
A1.3

Copyright © 2008 The Kubala Washatko Architects, Inc. All Rights Reserved.

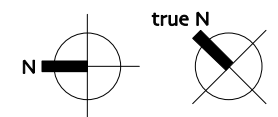
1 Floor 3 Plan (el: 120'-6")
 A1.3 Scale: 1/8"=1'-0"



MASTER PLAN



1 Floor 2 Plan (el:110'-0")
A1.2 Scale: 1/8"=1'-0"



MASTER PLAN



THE KUBALA WASHATKO ARCHITECTS INC.
W61 N617 Mequon Avenue
Cedarburg, WI 53012-2017
tel: 262.377.6039
fax: 262.377.2954

PROJECT

Madison Children's Museum

100 N. Hamilton
Madison, WI 53703

OWNER

Madison Children's Museum
100 North Hamilton
Madison, WI 53703

CONSTRUCTION MANAGER

J. H. Findorff & Son, Inc.
300 S. Bedford Street
Madison, WI 53703
Tel: 608.257.5321

CONSULTANT(S)

REVISIONS

DATE

October 8, 2008

PROJECT NUMBER

162805

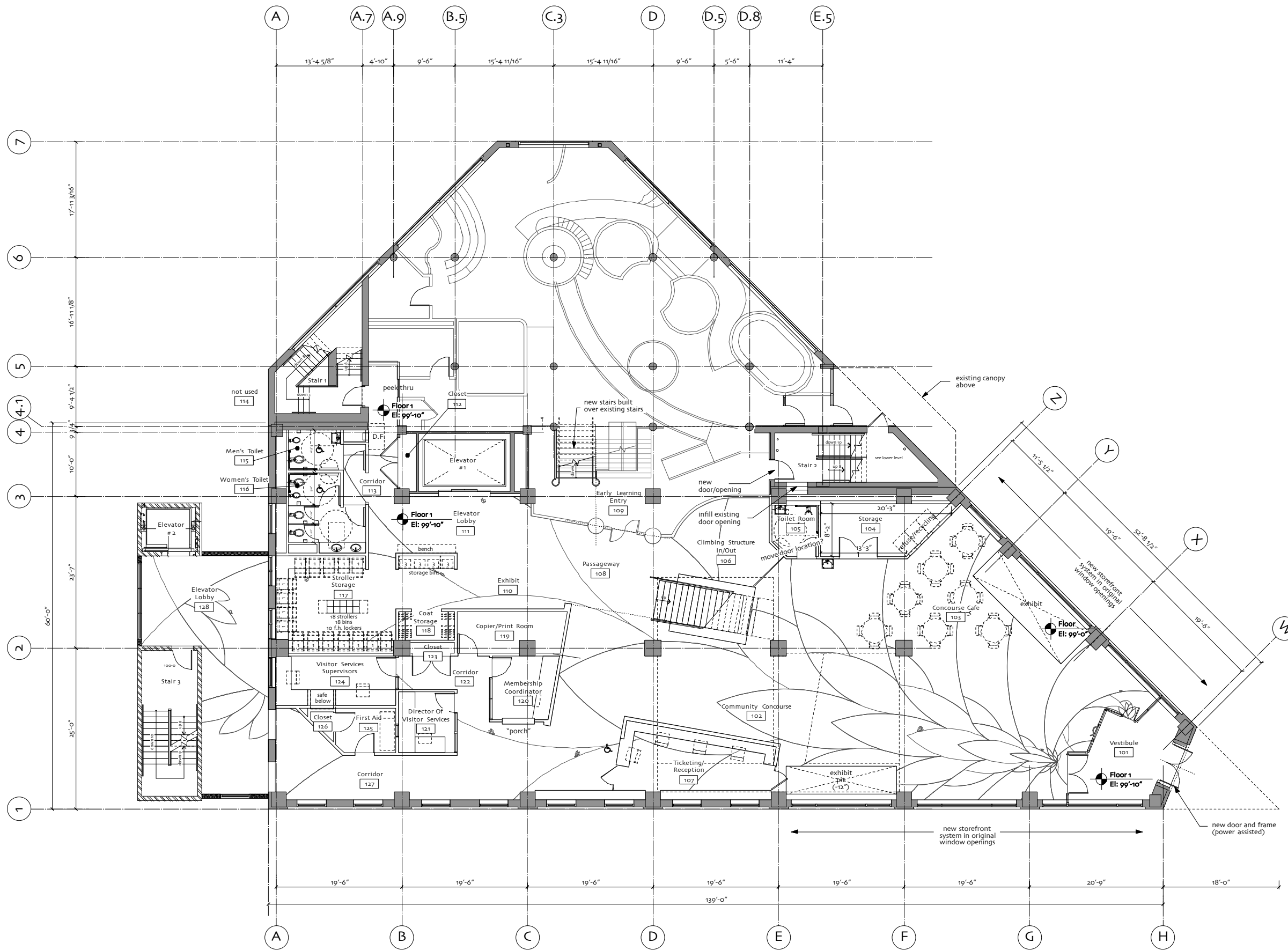
SHEET TITLE

Floor 2 Plan

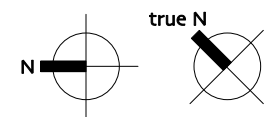
SHEET NUMBER

A1.2

Copyright © 2008 The Kubala Washatko Architects, Inc. All Rights Reserved.



1 Floor 1 Plan (el: 99'-10")
 A1.1 Scale: 1/8"=1'-0"



THE
 KUBALA WASHATKO
 ARCHITECTS
 INC.

W61 N617 Mequon Avenue
 Cedarburg, WI 53012-2017
 tel: 262.377.6039
 fax: 262.377.2954

PROJECT

**Madison
 Children's
 Museum**

100 N. Hamilton
 Madison, WI 53703

OWNER

Madison Children's
 Museum

100 North Hamilton
 Madison, WI 53703

CONSTRUCTION MANAGER

J. H. Findorff & Son, Inc.
 300 S. Bedford Street
 Madison, WI 53703
 Tel: 608.257.5321

CONSULTANT(S)

REVISIONS

DATE

October 8, 2008

PROJECT NUMBER

162805

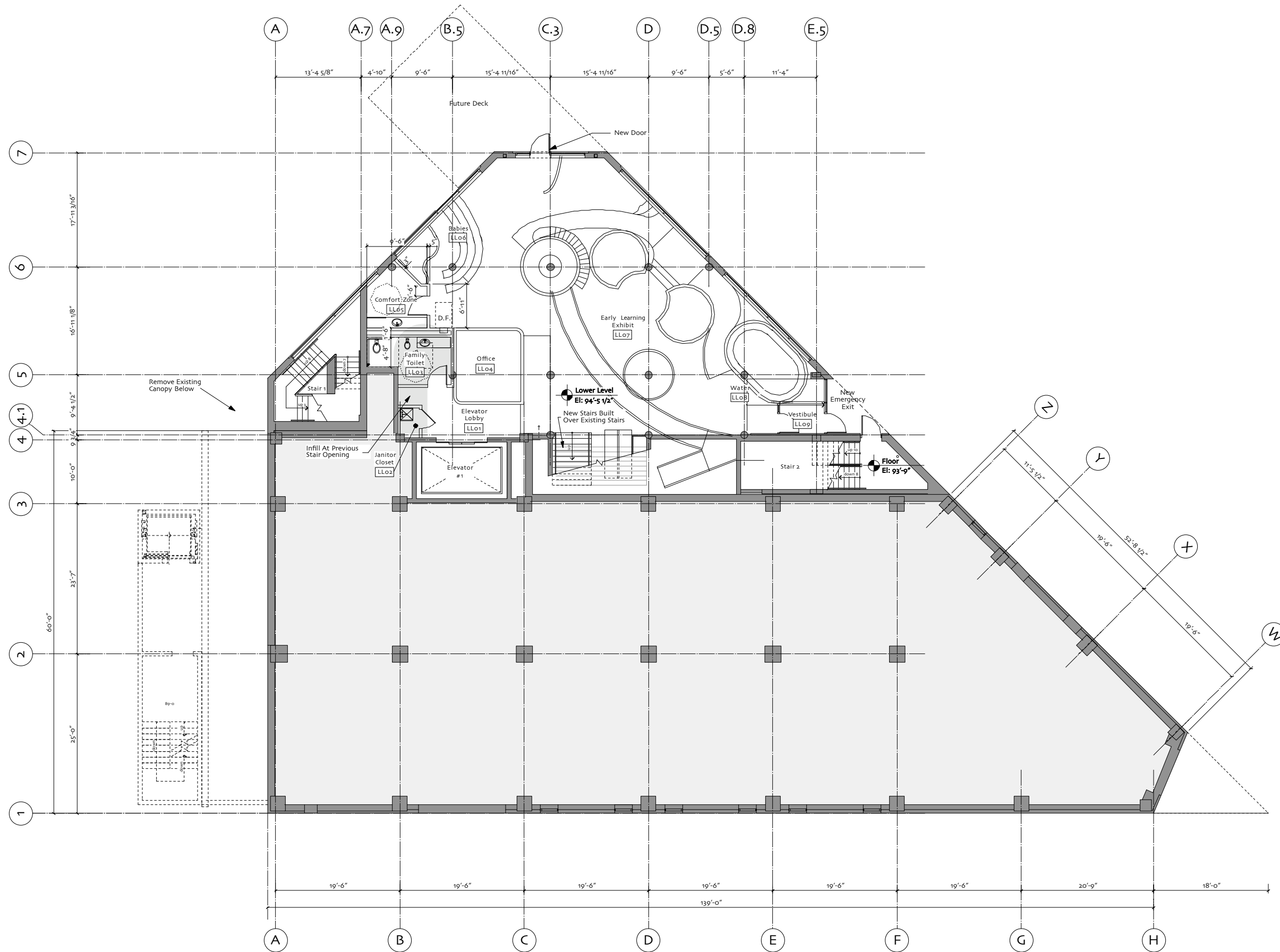
SHEET TITLE

Floor 1 Plan

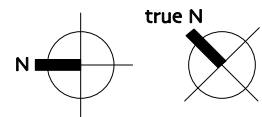
SHEET NUMBER

A1.1

Copyright © 2008 The Kubala Washatko Architects, Inc.
 All Rights Reserved.



1 Lower Level Plan (el:94'-5 1/2")
 A1.LL Scale: 1/8"=1'-0"



THE
 KUBALA WASHATKO
 ARCHITECTS
 INC.

W61 N617 Mequon Avenue
 Cedarburg, WI 53012-2017
 tel: 262.377.6039
 fax: 262.377.2954

PROJECT

**Madison
 Children's
 Museum**

100 N. Hamilton
 Madison, WI 53703

OWNER

Madison Children's
 Museum

100 North Hamilton
 Madison, WI 53703

CONSTRUCTION MANAGER

J. H. Findorff & Son, Inc.
 300 S. Bedford Street
 Madison, WI 53703
 Tel: 608.257.5321

CONSULTANT(S)

REVISIONS

DATE

October 8, 2008

PROJECT NUMBER

162805

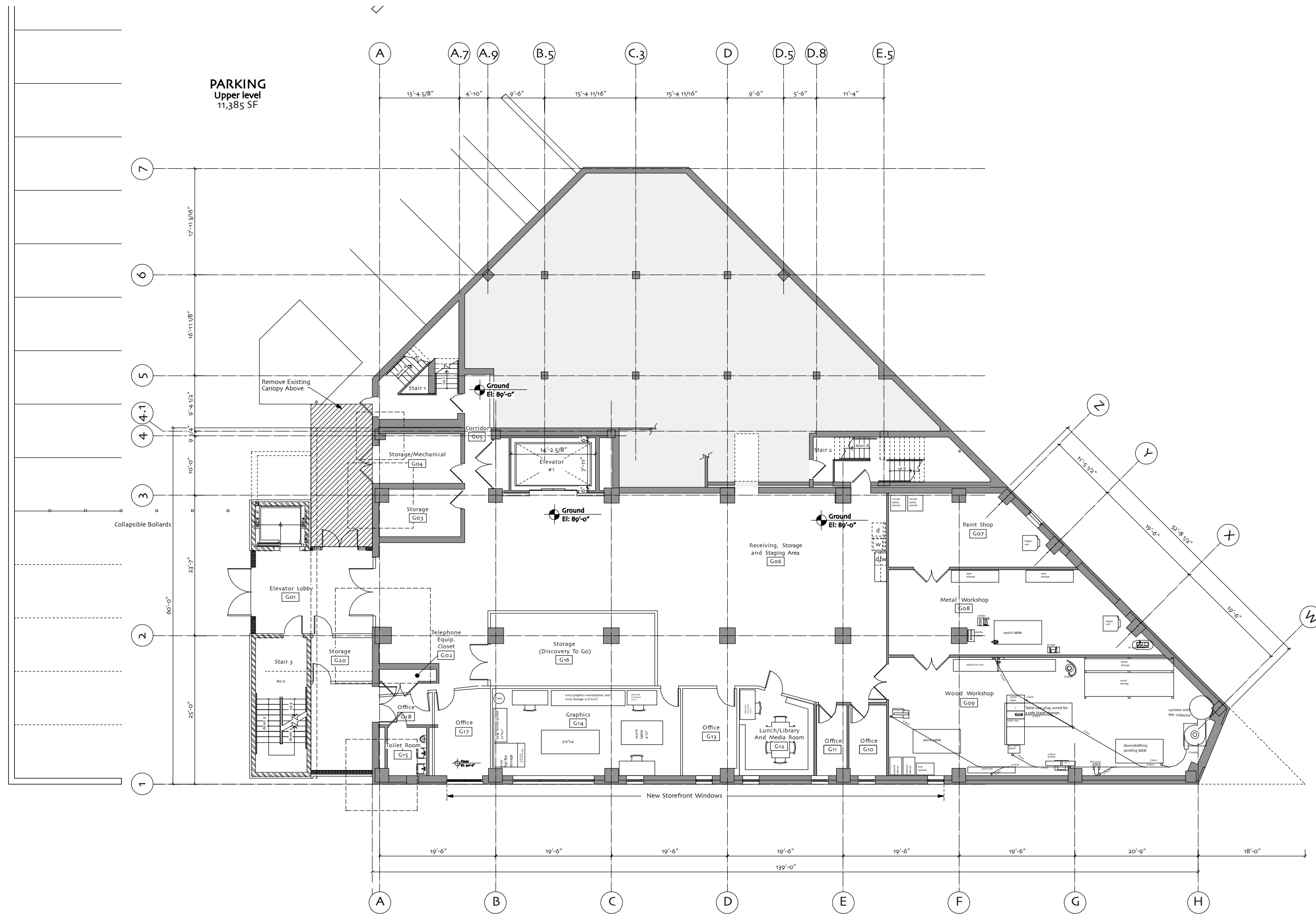
SHEET TITLE

Lower Level Plan

SHEET NUMBER

A1.LL

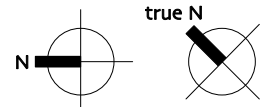
Copyright © 2008 The Kubala Washatko Architects, Inc.
 All Rights Reserved



PARKING
Upper level
11,385 SF

Collapsible Bollards

1 Ground Floor Plan (el: 89'-0")
A1.G Scale: 1/8"=1'-0"



MASTER PLAN



THE
KUBALA WASHATKO
ARCHITECTS
INC

W61 N617 Mequon Avenue
Cedarburg, WI 53012-2017
tel: 262.377.6039
fax: 262.377.2954

PROJECT

Madison Children's Museum

100 N. Hamilton
Madison, WI 53703

OWNER

Madison Children's Museum

100 North Hamilton
Madison, WI 53703

CONSTRUCTION MANAGER

J. H. Findorff & Son, Inc.
300 S. Bedford Street
Madison, WI 53703
Tel: 608.257.5321

CONSULTANT(S)

REVISIONS

NO.	DATE	DESCRIPTION

DATE

October 8, 2008

PROJECT NUMBER

162805

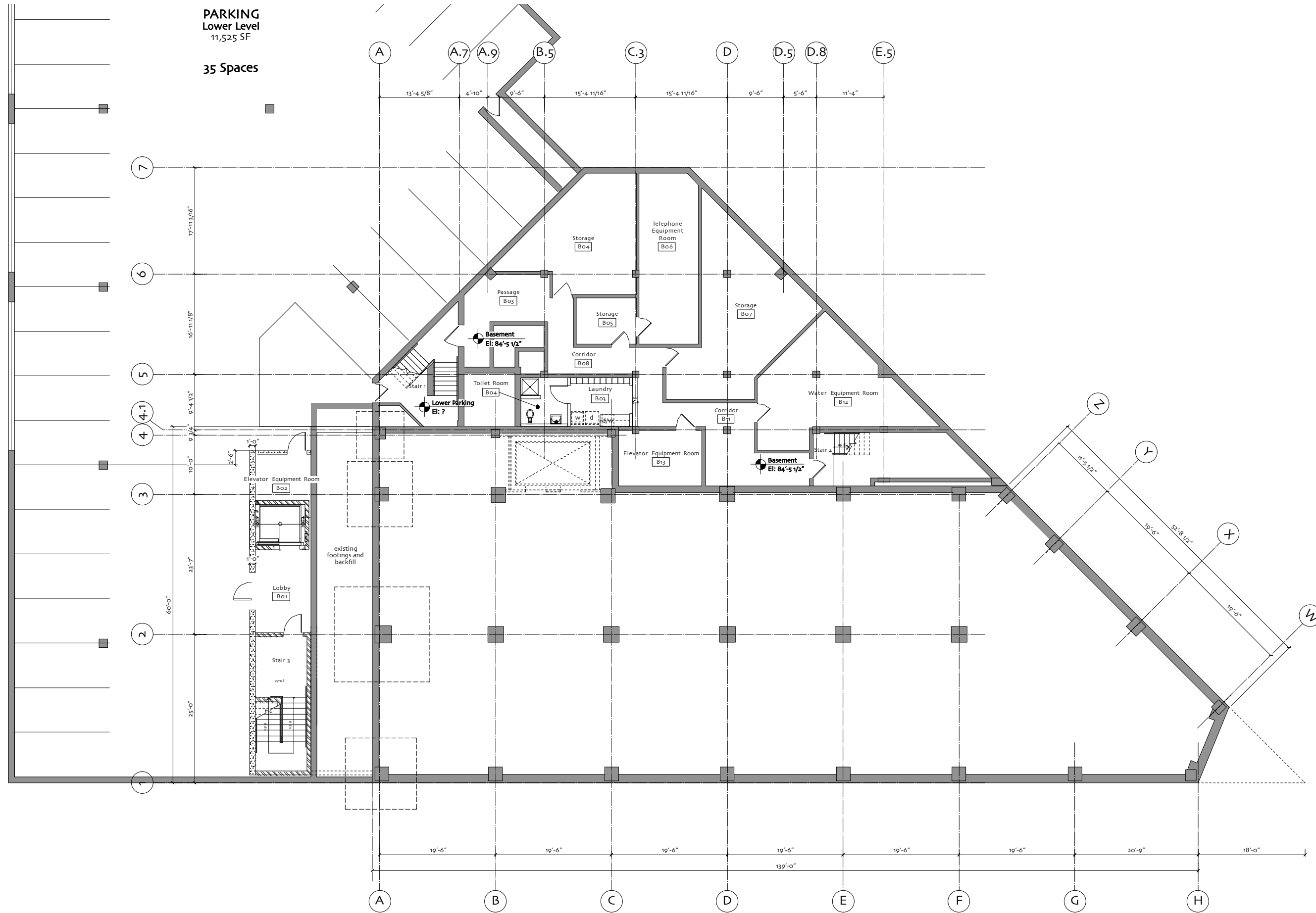
SHEET TITLE

Ground Floor Plan

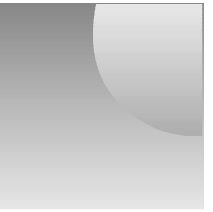
SHEET NUMBER

A1.G

Copyright © 2008 The Kubala Washatko Architects, Inc.
All Rights Reserved



PARKING
Lower Level
11,525 SF
35 Spaces



THE KUBALA WASHATKO ARCHITECTS INC

W61 N617 Mequon Avenue
Cedarburg, WI 53012-2017
tel: 262.377.6039
fax: 262.377.2954

PROJECT

Madison Children's Museum

100 N. Hamilton
Madison, WI 53703

OWNER

Madison Children's Museum

100 North Hamilton
Madison, WI 53703

CONSTRUCTION MANAGER

J. H. Findorff & Son, Inc.
300 S. Bedford Street
Madison, WI 53703
Tel: 608.257.5321

CONSULTANT(S)

REVISIONS

NO.	DESCRIPTION	DATE

DATE

October 8, 2008

PROJECT NUMBER

162805

SHEET TITLE

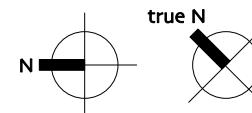
Basement Floor Plan

SHEET NUMBER

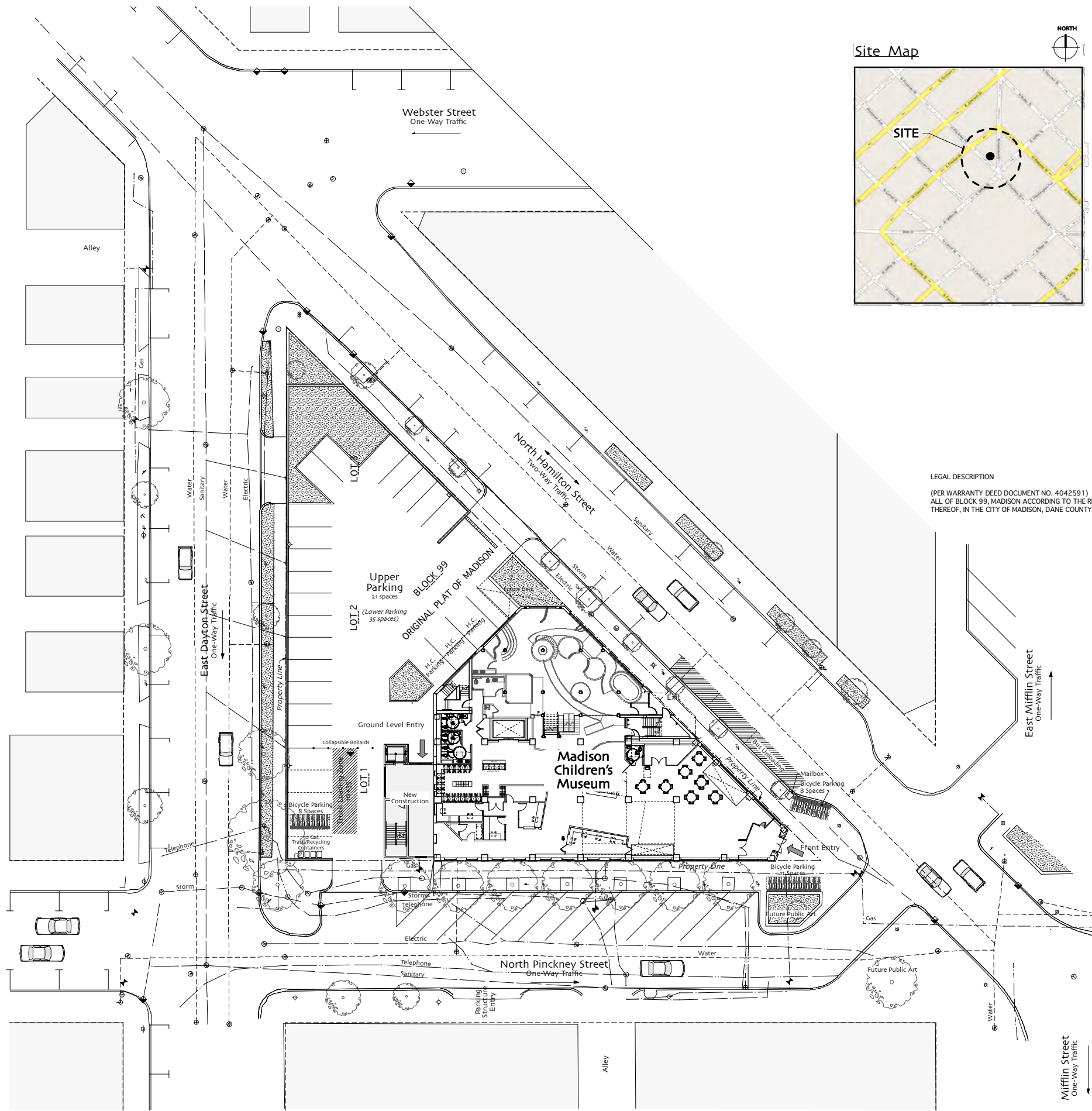
A1.B

Copyright © 2008 The Kubala Washatko Architects, Inc.
All Rights Reserved

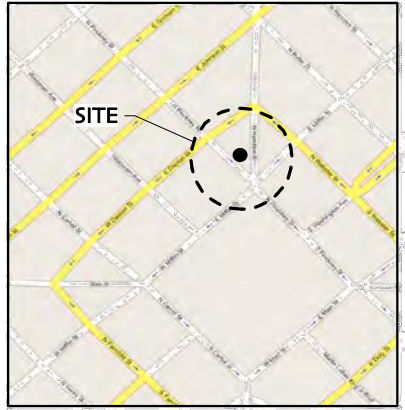
1
A1.B Basement Floor Plan (el: 84'-5 1/2")
Scale: 1/8"=1'-0"



MASTER PLAN



Site Map



General Location Map

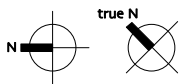


LEGAL DESCRIPTION

(PER WARRANTY DEED DOCUMENT NO. 4042591)
 ALL OF BLOCK 99, MADISON ACCORDING TO THE RECORDED PLAT THEREOF, IN THE CITY OF MADISON, DANE COUNTY, WISCONSIN.

0' 16' 32' 64'
 THE KUBALA WASHATKO ARCHITECTS

1
 C1.0 Site Plan
 Scale: 1/4" = 1'-0"



REVISIONS	
NO.	DESCRIPTION
DATE	
September 17, 2008	
PROJECT NUMBER	
162805	
SHEET TITLE	
Site Plan	
SHEET NUMBER	
C1.0	