

**APPLICATION FOR
URBAN DESIGN COMMISSION
REVIEW AND APPROVAL**

AGENDA ITEM # _____
Project # _____

DATE SUBMITTED: <u>11-9-05</u>	Action Requested
UDC MEETING DATE: <u>11-16-05</u>	<input type="checkbox"/> Informational Presentation
	<input type="checkbox"/> Initial Approval and/or Recommendation
	<input checked="" type="checkbox"/> Final Approval and/or Recommendation

PROJECT ADDRESS: 6322 MAYWICK DR.
ALDERMANIC DISTRICT: Judy Compton

OWNER/DEVELOPER (Partners and/or Principals) ARCHITECT/DESIGNER/OR AGENT:
H.D. ENTERPRISES II L.L.C. THE DESIGN ALLIANCE ARCHITECTS, INC.
JEFF WICKLINE PETER A. WESTON - ARCHITECT

6073 COTTONTAIL TRL., MADISON, WI 53718 1001 MADISON AVE., SUITE C, FORT ATKINSON, WI 53538

CONTACT PERSON: THE DESIGN ALLIANCE ARCHITECTS - PETER WESTON
Address: 1001 MADISON AVE, SUITE C
FORT ATKINSON, WI 53538
Phone: 920-563-3404
Fax: 920-568-7058
E-mail address: peter.w@the.design.alliance.us

TYPE OF PROJECT:

(See Section A for:)

- Planned Unit Development (PUD)
 - General Development Plan (GDP)
 - Specific Implementation Plan (SIP)
- Planned Community Development (PCD)
 - General Development Plan (GDP)
 - Specific Implementation Plan (SIP)
- Planned Residential Development (PRD)
- New Construction or Exterior Remodeling in an Urban Design District * (A public hearing is required as well as a fee)
 - School, Public Building or Space (Fee may be required)
 - New Construction or Addition to or Remodeling of a Retail, Hotel or Motel Building Exceeding 50,000 Sq. Ft.
 - Planned Commercial Site

(See Section B for:)

- New Construction or Exterior Remodeling in C4 District (Fee required)

(See Section C for:)

- R.P.S.M. Parking Variance (Fee required)

(See Section D for:)

- Comprehensive Design Review* (Fee required)
- Street Graphics Variance* (Fee required)
- Other _____

*Public Hearing Required (Submission Deadline 3 Weeks in Advance of Meeting Date)





Drawing Index

Cover	A-5 20 Unit Loft Plan
SP-1 Site Plan	A-6 20 Unit Elevations
SP-2 Fire Access Plan	A-7 20 Unit Elevations
L-1 Landscape Plan	A-8 18 Unit Plan Diagrams
L-2 Lighting Plan	A-9 18 Unit Elevations
A-1 20 Unit Plan Diagrams	A-10 18 Unit Elevations
A-2 20 Unit Parking Garage Plan	C-1 Grading Plan
A-3 20 Unit Main Floor Plan	C-2 Erosion Control Plan
A-4 20 Unit Upper Floor Plan	C-3 Site Details

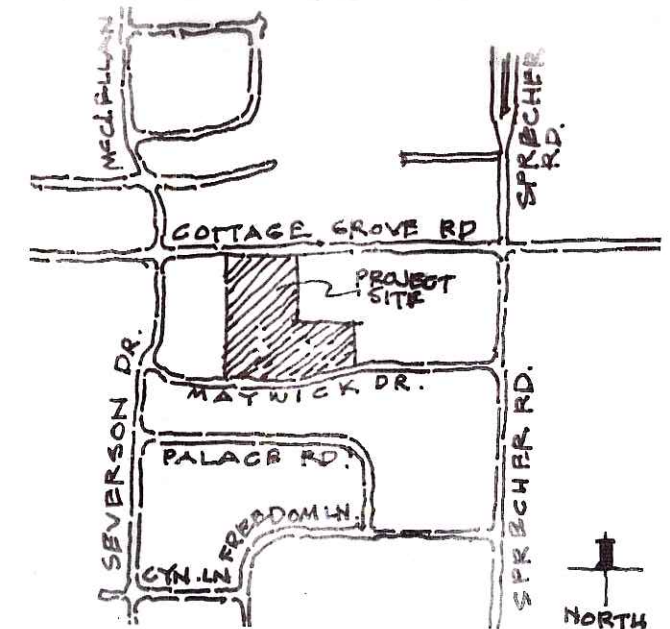
the Design
Alliance
Architects, Inc.

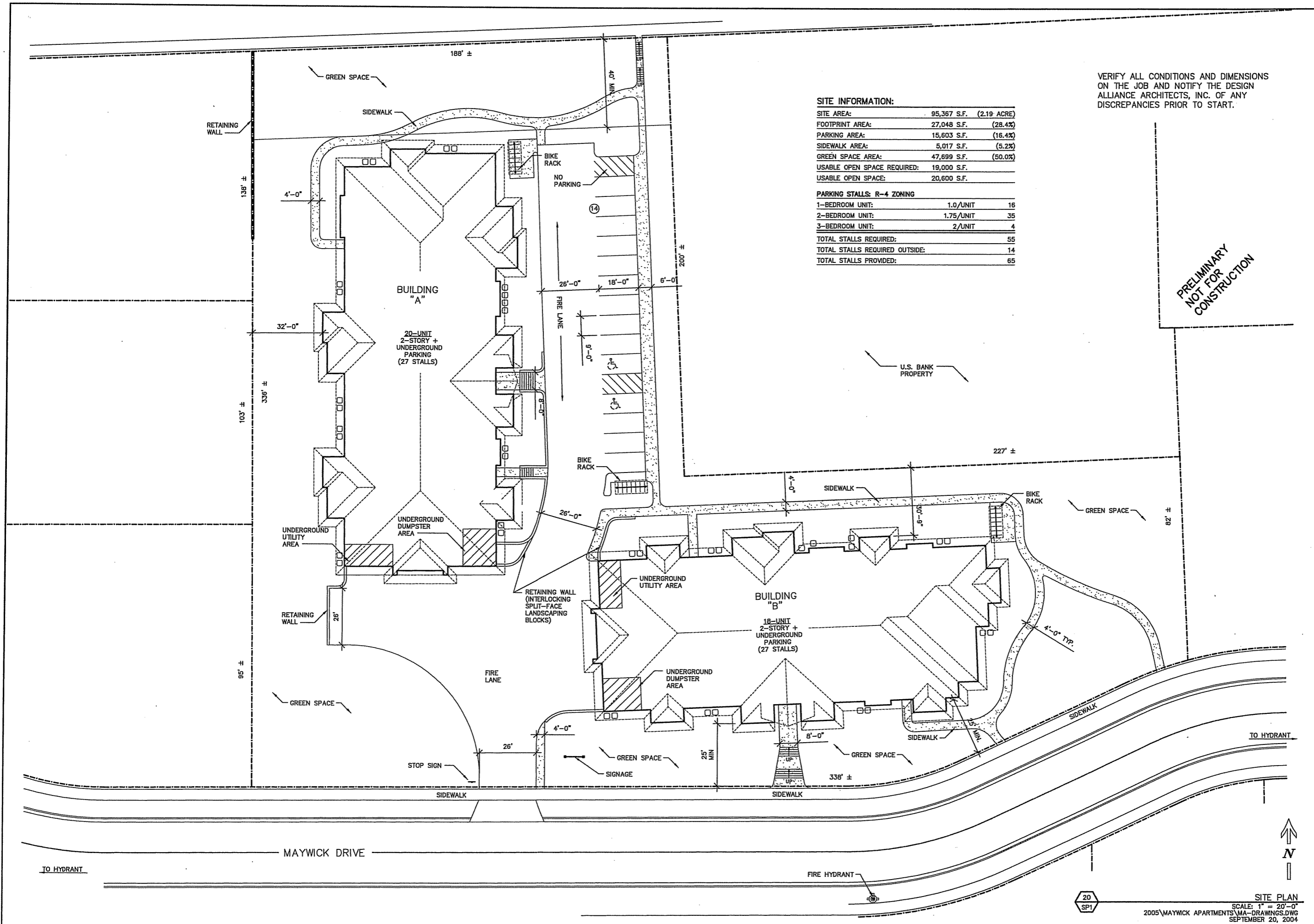
Maywick Apartments

Madison, Wisconsin

1001 Madison Avenue
Fort Atkinson, WI

(920) 563-3404
FAX (920) 568-7058





SITE INFORMATION:

SITE AREA:	95,367 S.F.	(2.19 ACRE)
FOOTPRINT AREA:	27,048 S.F.	(28.4%)
PARKING AREA:	15,603 S.F.	(16.4%)
SIDEWALK AREA:	5,017 S.F.	(5.2%)
GREEN SPACE AREA:	47,699 S.F.	(50.0%)
USABLE OPEN SPACE REQUIRED:	19,000 S.F.	
USABLE OPEN SPACE:	20,600 S.F.	

PARKING STALLS: R-4 ZONING

1-BEDROOM UNIT:	1.0/UNIT	16
2-BEDROOM UNIT:	1.75/UNIT	35
3-BEDROOM UNIT:	2/UNIT	4
TOTAL STALLS REQUIRED:		55
TOTAL STALLS REQUIRED OUTSIDE:		14
TOTAL STALLS PROVIDED:		65

VERIFY ALL CONDITIONS AND DIMENSIONS ON THE JOB AND NOTIFY THE DESIGN ALLIANCE ARCHITECTS, INC. OF ANY DISCREPANCIES PRIOR TO START.

PRELIMINARY
NOT FOR
CONSTRUCTION

MAYWICK APARTMENTS
 6322 Maywick Drive
 Madison, WI

DRAWING NAMES

SITE PLAN

REVISIONS

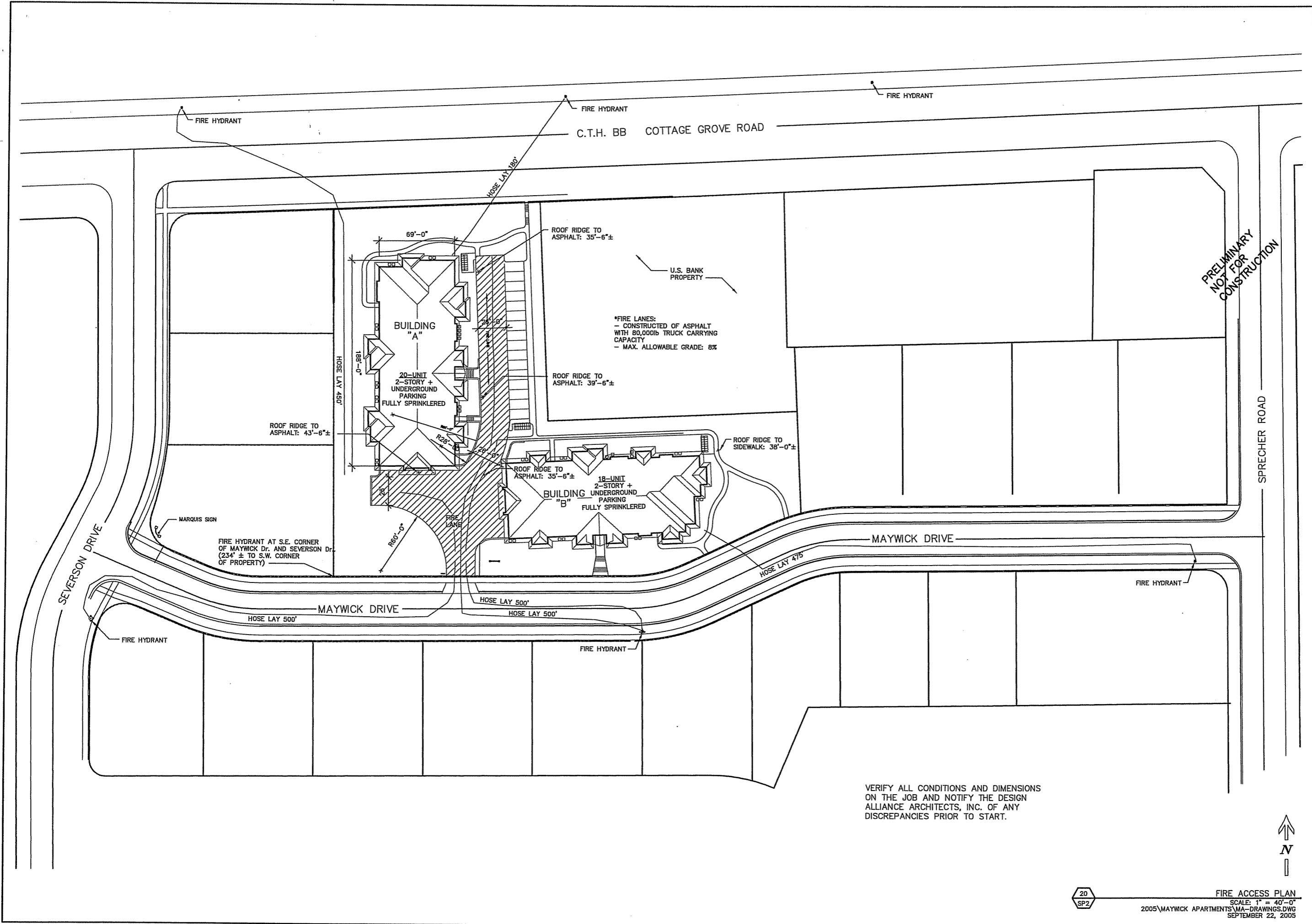
1	11/9/2005

PROJECT DATA

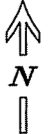
DATE:	10/25/05
DRAWN BY:	CL
CHECKED BY:	P.W.

SHEET NO.

SP-1



VERIFY ALL CONDITIONS AND DIMENSIONS ON THE JOB AND NOTIFY THE DESIGN ALLIANCE ARCHITECTS, INC. OF ANY DISCREPANCIES PRIOR TO START.



20 SP2

FIRE ACCESS PLAN
 SCALE: 1" = 40'-0"
 2005\MAYWICK APARTMENTS\MA-DRAWINGS.DWG
 SEPTEMBER 22, 2005

IDesign Alliance Architects, Inc.
 (920) 563-3404
 1001 Madison Avenue
 Fort Atkinson, WI
 FAX (920) 568-7058

MAYWICK APARTMENTS
 6322 Maywick Drive
 Madison, WI

DRAWING NAMES
 FIRE ACCESS PLAN

REVISIONS	
1	11/9/2005

PROJECT DATA
 DATE: 10/25/05
 DRAWN BY: CL
 CHECKED BY: P.W.

SHEET NO.

SP-2



—landscape architecture—
—fine garden design—
—horticultural consultation—

5155 Melissa Dr.
Scottsdale, AZ 85250
Phone: 480-477-1007
Fax: 480-477-1008
www.camara.com

PLANT SCHEDULE

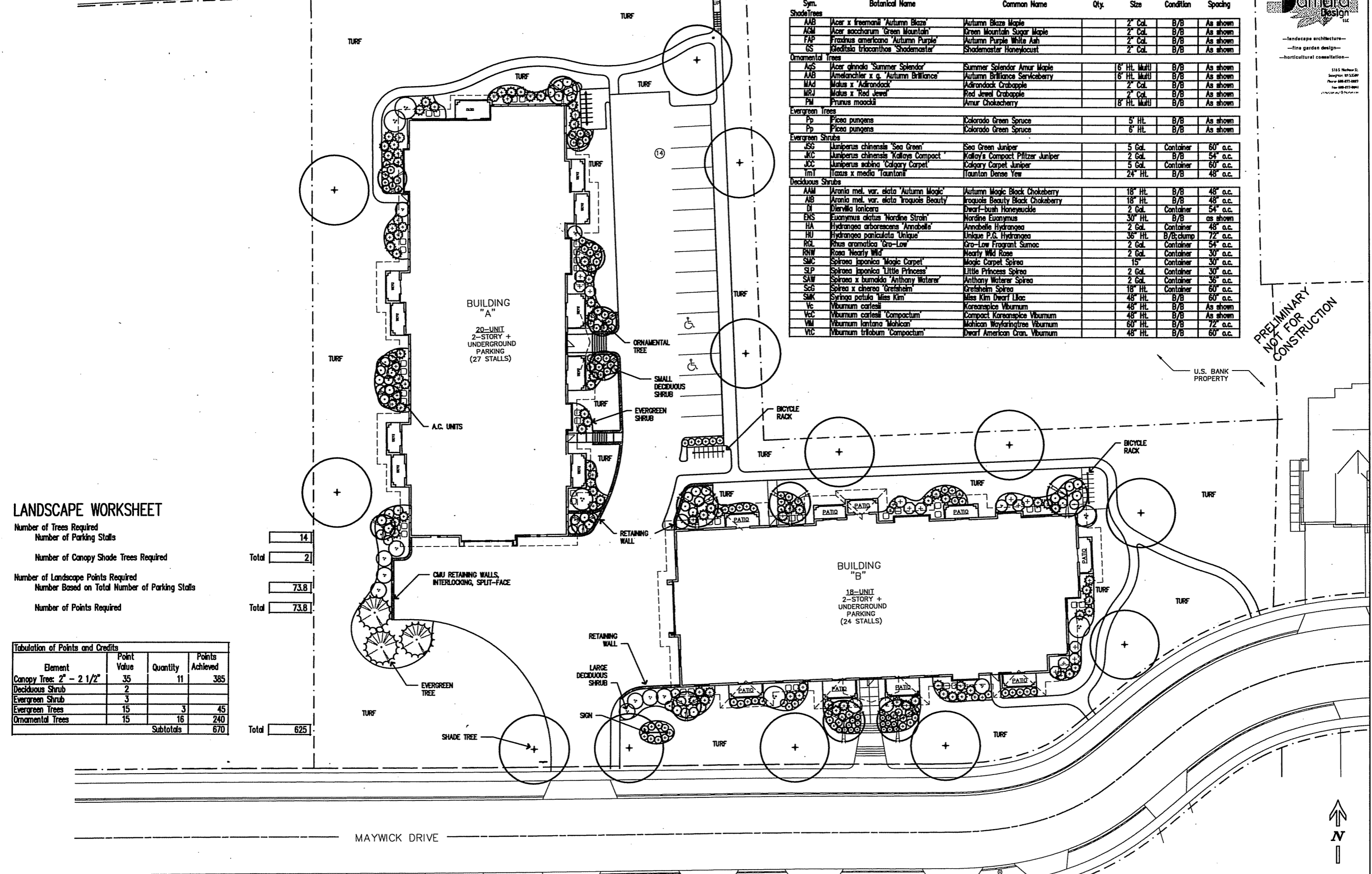
Sym.	Botanical Name	Common Name	Qty.	Size	Condition	Spacing
Shade Trees						
AAB	Acer x freemanii 'Autumn Blaze'	Autumn Blaze Maple	2"	Col.	B/B	As shown
AGM	Acer saccharum 'Green Mountain'	Green Mountain Sugar Maple	2"	Col.	B/B	As shown
FAP	Fraxinus americana 'Autumn Purple'	Autumn Purple White Ash	2"	Col.	B/B	As shown
GS	Gleditsia triacanthos 'Shademaster'	Shademaster Honeylocust	2"	Col.	B/B	As shown
Ornamental Trees						
AgS	Acer glabrum 'Summer Splendor'	Summer Splendor Amur Maple	6" HL	Multi	B/B	As shown
AAB	Amelanchier x g. 'Autumn Brilliance'	Autumn Brilliance Serviceberry	6" HL	Multi	B/B	As shown
MAd	Malus x 'Adirondack'	Adirondack Crabapple	2"	Col.	B/B	As shown
MRJ	Malus x 'Red Jewel'	Red Jewel Crabapple	2"	Col.	B/B	As shown
PM	Prunus mosackii	Amur Chokecherry	8" HL	Multi	B/B	As shown
Evergreen Trees						
Pp	Picea pungens	Colorado Green Spruce	5' HL		B/B	As shown
Pp	Picea pungens	Colorado Green Spruce	6' HL		B/B	As shown
Evergreen Shrubs						
JSG	Juniperus chinensis 'Sea Green'	Sea Green Juniper	5 Gal.		Container	60" o.c.
JCC	Juniperus chinensis 'Kallay's Compact'	Kallay's Compact Pfitzer Juniper	2 Gal.		B/B	54" o.c.
JCC	Juniperus sibirica 'Calgary Carpet'	Calgary Carpet Juniper	5 Gal.		Container	60" o.c.
Im1	Ilex x media 'Tauntan'	Tauntan Dense Yew	24" HL		B/B	48" o.c.
Deciduous Shrubs						
AAM	Aronia mel. var. alata 'Autumn Magic'	Autumn Magic Black Chokeberry	18" HL		B/B	48" o.c.
AB	Aronia mel. var. alata 'Iroquois Beauty'	Iroquois Beauty Black Chokeberry	18" HL		B/B	48" o.c.
DI	Dieris lonicera	Dwarf-bush Honeysuckle	2 Gal.		Container	54" o.c.
ENS	Euonymus alatus 'Nordine Strain'	Nordine Euonymus	30" HL		B/B	as shown
HA	Hydrangea arborescens 'Annabelle'	Annabelle Hydrangea	2 Gal.		Container	48" o.c.
HU	Hydrangea paniculata 'Unique'	Unique P.G. Hydrangea	36" HL		B/B/clump	72" o.c.
RGL	Rhus aromatica 'Gro-Low'	Gro-Low Fragrant Sumac	2 Gal.		Container	54" o.c.
RNW	Rosa 'Nearly Wild'	Nearly Wild Rose	2 Gal.		Container	30" o.c.
SWC	Spiraea japonica 'Magic Carpet'	Magic Carpet Spiraea	15"		Container	30" o.c.
SLP	Spiraea japonica 'Little Princess'	Little Princess Spiraea	2 Gal.		Container	30" o.c.
SAW	Spiraea x bumalda 'Anthony Waterer'	Anthony Waterer Spiraea	2 Gal.		Container	36" o.c.
SCS	Spiraea x cheroke 'Gretchen'	Gretchen Spiraea	18" HL		Container	60" o.c.
SKK	Syringa patula 'Miss Kim'	Miss Kim Dwarf Lilac	48" HL		B/B	60" o.c.
Vc	Viburnum carlesii	Koreanspice Viburnum	48" HL		B/B	As shown
VcC	Viburnum carlesii 'Compactum'	Compact Koreanspice Viburnum	48" HL		B/B	As shown
VM	Viburnum lantana 'Mohican'	Mohican Wayfaringtree Viburnum	60" HL		B/B	72" o.c.
VIC	Viburnum trilobum 'Compactum'	Dwarf American Cran. Viburnum	48" HL		B/B	60" o.c.

LANDSCAPE WORKSHEET

Number of Trees Required
Number of Parking Stalls
Number of Canopy Shade Trees Required
Number of Landscape Points Required
Number Based on Total Number of Parking Stalls
Number of Points Required

Total	14
Total	2
Total	73.8
Total	73.8
Total	625

Element	Point Value	Quantity	Points Achieved
Canopy Tree: 2" - 2 1/2"	35	11	385
Deciduous Shrub	2		
Evergreen Shrub	3		
Evergreen Trees	15	3	45
Ornamental Trees	15	16	240
Subtotals			670



Design Alliance Architects, Inc.
1001 Madison Avenue
Fort Atkinson, WI
(920) 563-3404
FAX (920) 568-7058

MAYWICK APARTMENTS
6322 Maywick Drive
Madison, WI

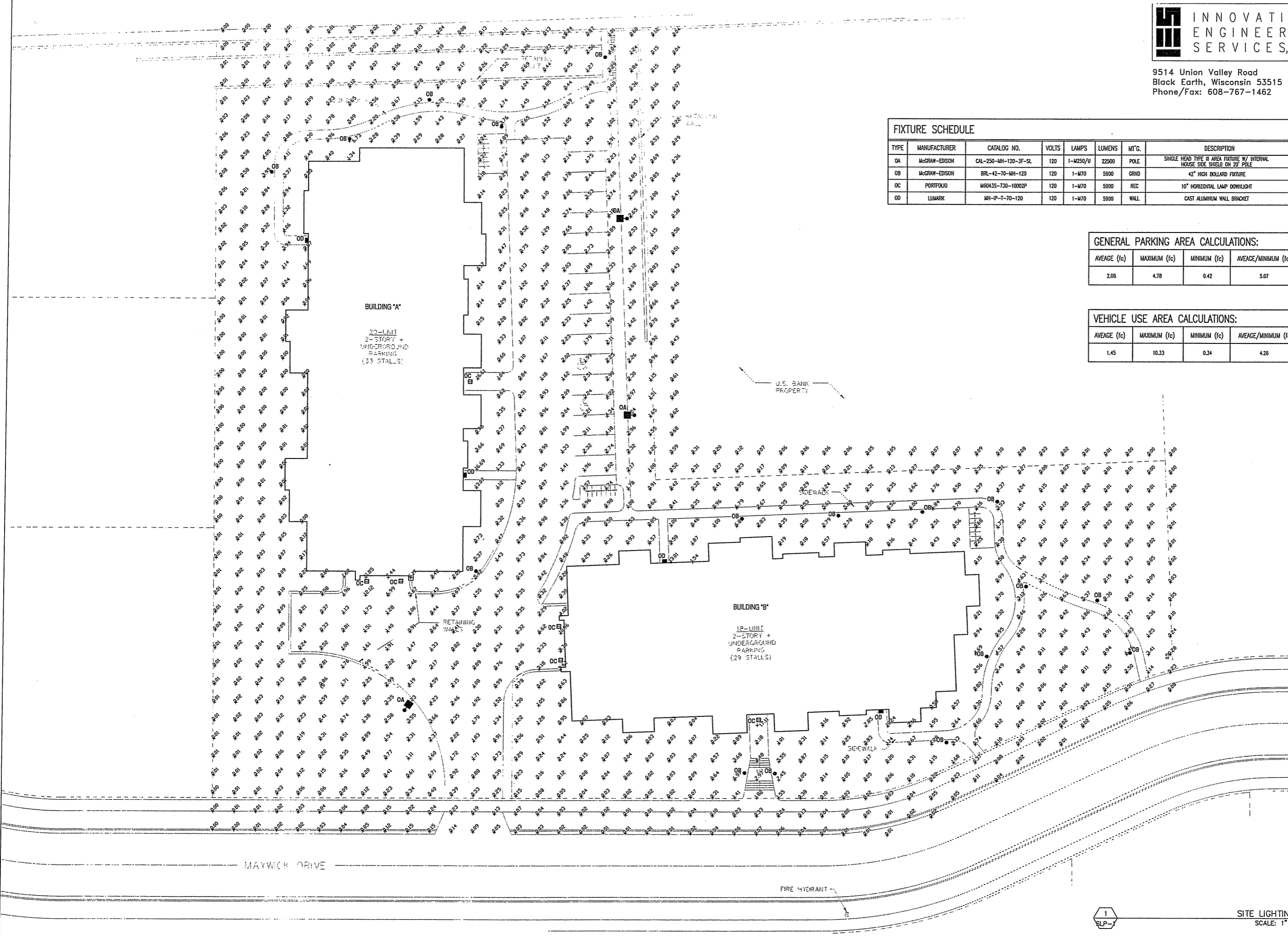
DRAWING NAMES
LANDSCAPE PLAN

REVISIONS
1 11/9/05

PROJECT DATA
DATE: 10/24/05
DRAWN BY:
CHECKED BY:
SHEET NO.

L-1

LANDSCAPE PLAN
SCALE: 1" = 20'-0"
OCTOBER 24, 2005



FIXTURE SCHEDULE

TYPE	MANUFACTURER	CATALOG NO.	VOLTS	LAMPS	LUMENS	MT'G.	DESCRIPTION
DA	McGraw-Edison	CAL-250-MH-120-3F-SL	120	1-M250/U	22500	POLE	SINGLE HEAD TYPE II AREA FIXTURE W/ INTERNAL HOUSE SIDE SHIELD ON 20' POLE
OB	McGraw-Edison	BRL-42-70-MH-120	120	1-M70	5900	GRND	42" HIGH BOLLARD FIXTURE
OC	PORIFOLD	M604JS-730-10002P	120	1-M70	5900	REC	10" HORIZONTAL LAMP DOWNLIGHT
OD	LUMARK	MH-IP-T-70-120	120	1-M70	5900	WALL	CAST ALUMINUM WALL BRACKET

GENERAL PARKING AREA CALCULATIONS:

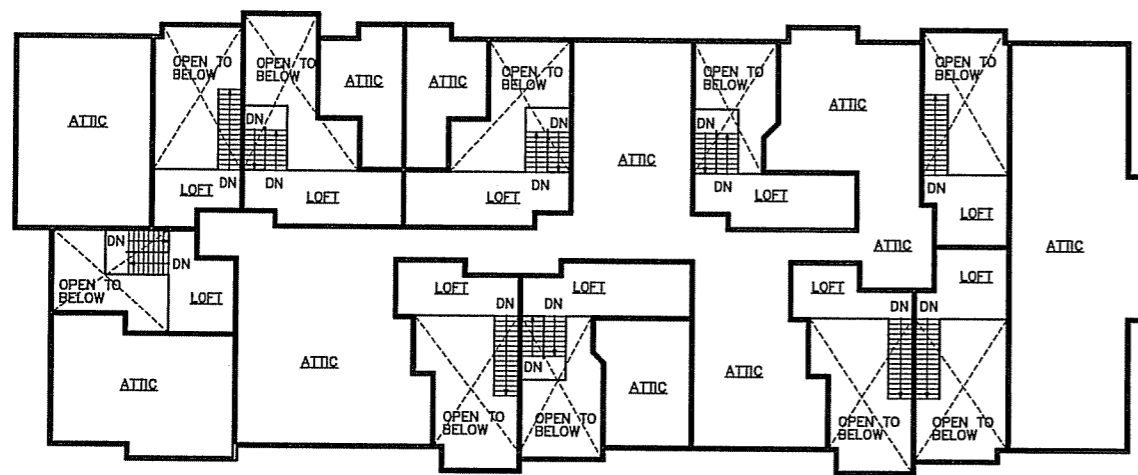
AVERAGE (fc)	MAXIMUM (fc)	MINIMUM (fc)	AVERAGE/MINIMUM (fc)
2.08	4.78	0.42	5.07

VEHICLE USE AREA CALCULATIONS:

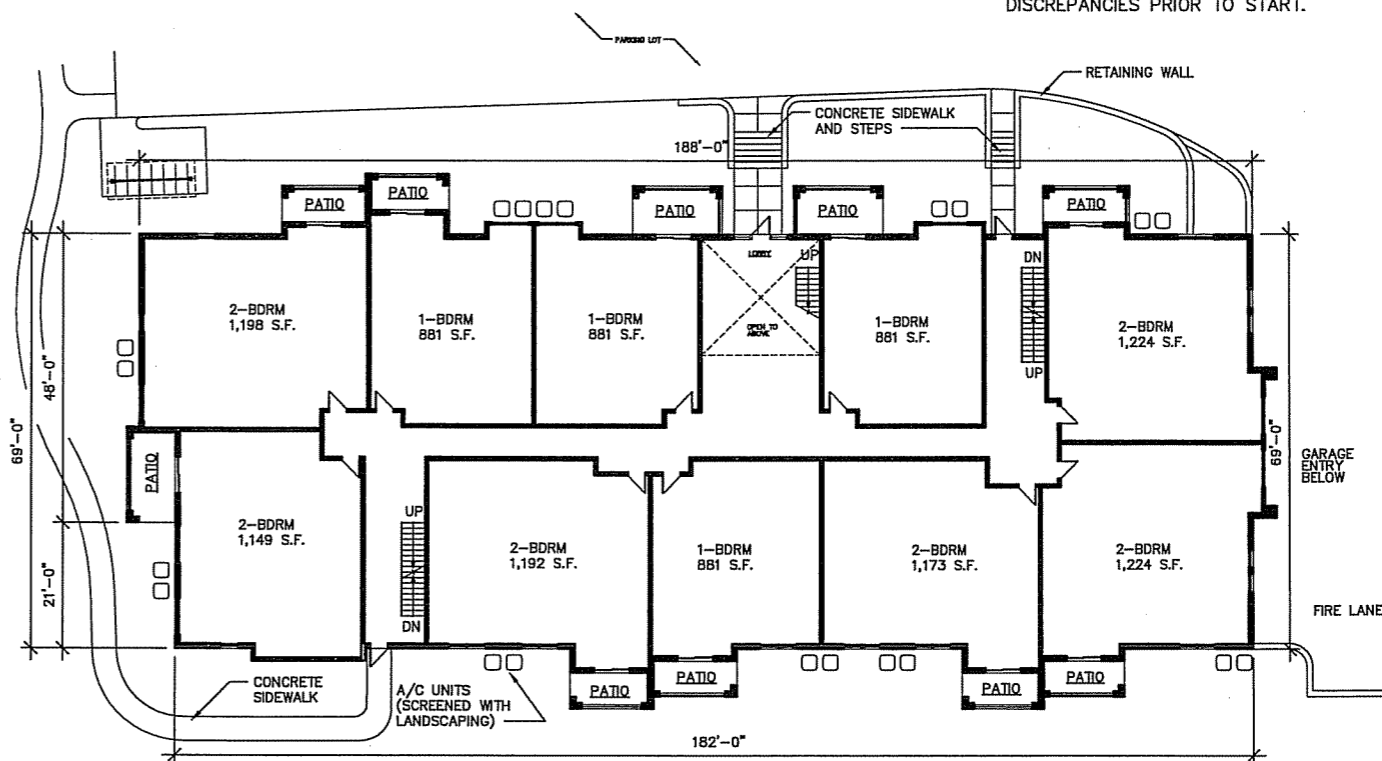
AVERAGE (fc)	MAXIMUM (fc)	MINIMUM (fc)	AVERAGE/MINIMUM (fc)
1.45	10.33	0.34	4.26

1
SLP

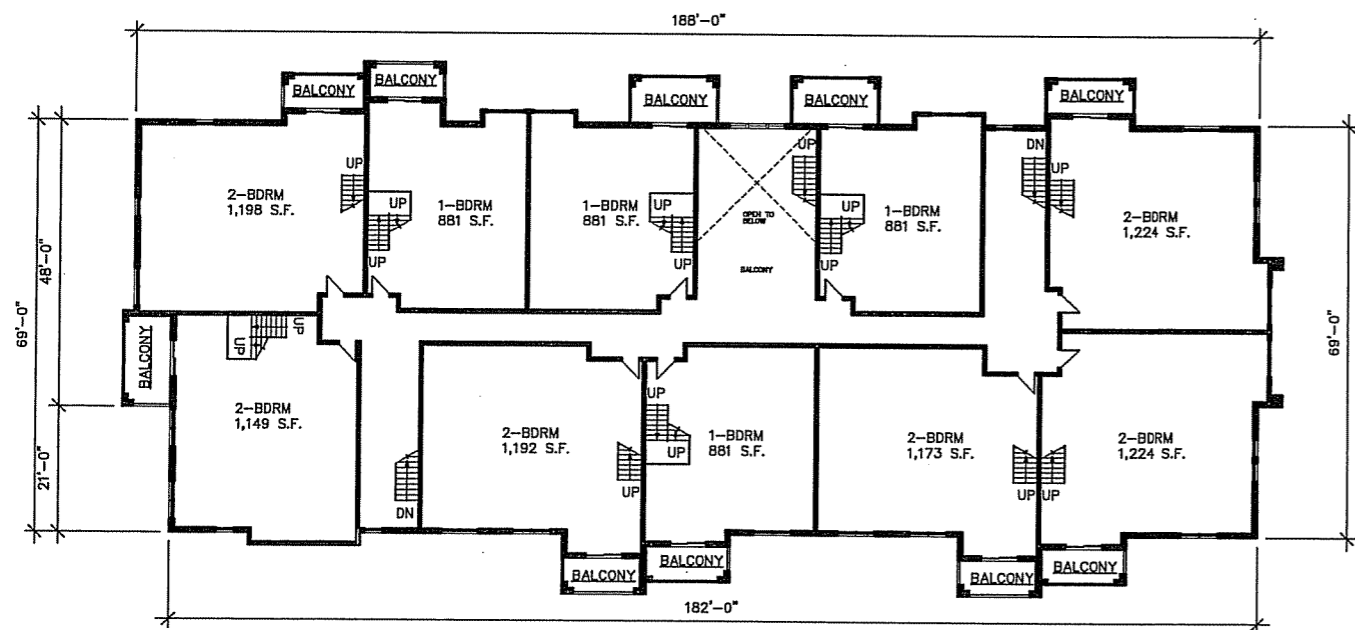
SITE LIGHTING PLAN
SCALE: 1" = 20'-0"



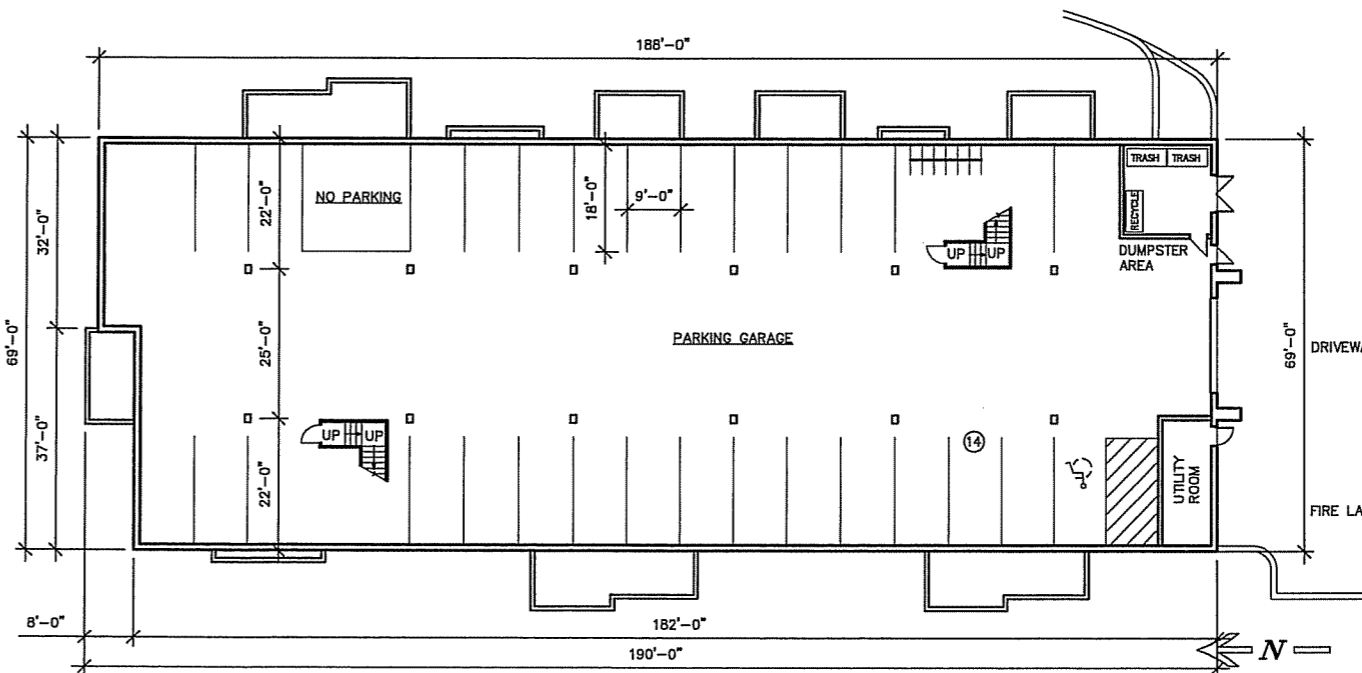
8
A1 20-UNIT LOFT FLOOR PLAN
SCALE: 1/8" = 1'-0"
2005\MAYWICK APARTMENTS\MA-DRAWINGS.DWG
SEPTEMBER 20, 2005



10
A1 20-UNIT MAIN FLOOR PLAN
SCALE: 1/8" = 1'-0"
2005\MAYWICK APARTMENTS\MA-DRAWINGS.DWG
SEPTEMBER 20, 2005



18
A1 20-UNIT UPPER FLOOR PLAN
SCALE: 1/8" = 1'-0"
2005\MAYWICK APARTMENTS\MA-DRAWINGS.DWG
SEPTEMBER 20, 2005



20
A1 20-UNIT PARKING GARAGE FLOOR PLAN
SCALE: 1/8" = 1'-0"
2005\MAYWICK APARTMENTS\MA-DRAWINGS.DWG
SEPTEMBER 20, 2005

VERIFY ALL CONDITIONS AND DIMENSIONS ON THE JOB AND NOTIFY THE DESIGN ALLIANCE ARCHITECTS, INC. OF ANY DISCREPANCIES PRIOR TO START.

Design Alliance Architects, Inc.
1001 Madison Avenue
Fort Atkinson, WI
(920) 563-3404
FAX (920) 568-7058

PRELIMINARY NOT FOR CONSTRUCTION
MAYWICK APARTMENT
6322 Maywick Drive
Madison, WI

DRAWING NAMES

20-UNIT PARKING GARAGE FLOOR PLAN

REVISIONS

1	11/9/05
---	---------

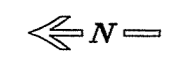
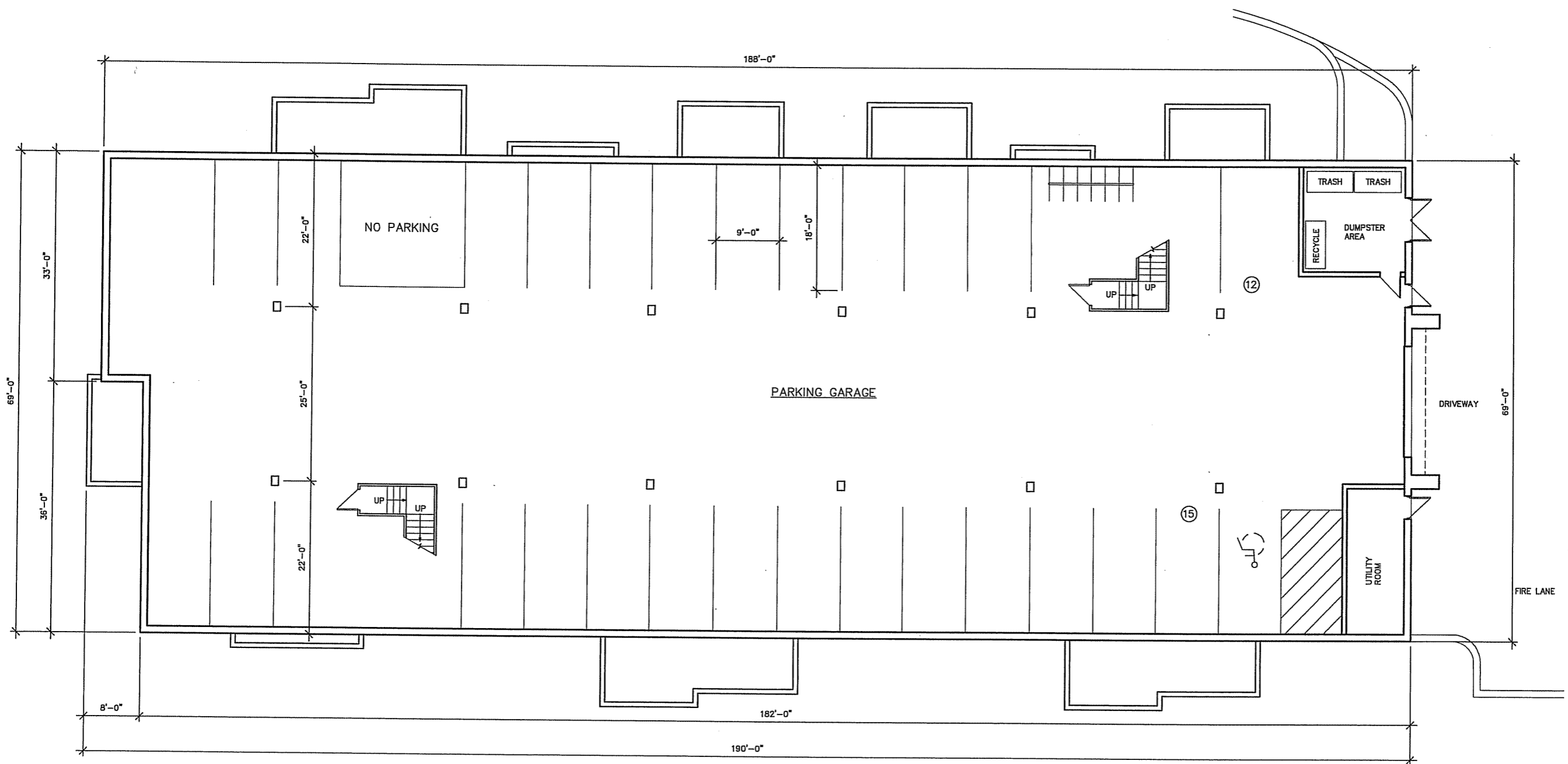
PROJECT DATA

DATE: 10/25/05
DRAWN BY: CL
CHECKED BY: P.W.

SHEET NO.

A-1

VERIFY ALL CONDITIONS AND DIMENSIONS ON THE JOB AND NOTIFY THE DESIGN ALLIANCE ARCHITECTS, INC. OF ANY DISCREPANCIES PRIOR TO START.



20-UNIT PARKING GARAGE FLOOR PLAN
 SCALE: 1/8" = 1'-0"
 2005\MAYWICK APARTMENTS\MA-DRAWINGS.DWG
 SEPTEMBER 20, 2005

Design Alliance Architects, Inc.
 (920) 565-3404
 Fort Atkinson, WI
 FAX (920) 566-7058

PRELIMINARY NOT FOR CONSTRUCTION
MAYWICK APARTMENTS
 6322 Maywick Drive
 Madison, WI

DRAWING NAMES

20-UNIT MAIN FLOOR PLAN

REVISIONS

1	11/9/2005

PROJECT DATA

DATE: 10/25/05
 DRAWN BY: CL
 CHECKED BY: P.W.

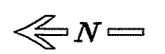
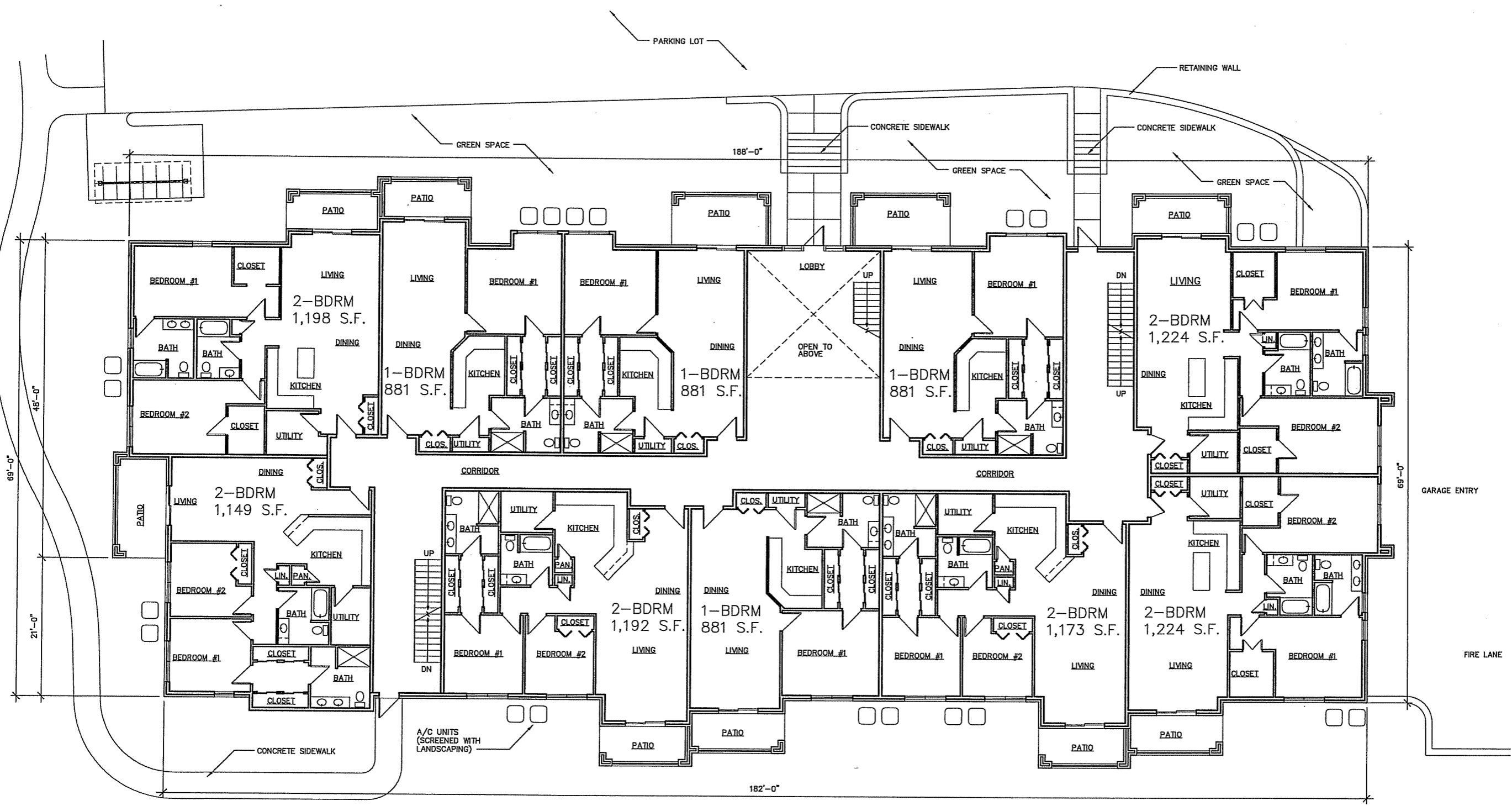
SHEET NO.

A-2

VERIFY ALL CONDITIONS AND DIMENSIONS ON THE JOB AND NOTIFY THE DESIGN ALLIANCE ARCHITECTS, INC. OF ANY DISCREPANCIES PRIOR TO START.

eDesign
Alliance Architects, Inc.
1001 Madison Avenue
Fort Atkinson, WI
(920) 563-3404
FAX (920) 568-7058

PRELIMINARY
NOT FOR CONSTRUCTION
MAYWICK APARTMENT
6322 Maywick Drive
Madison, WI



20
A3
20-UNIT MAIN FLOOR PLAN
SCALE: 1/8" = 1'-0"
2005\MAYWICK APARTMENTS\MA-DRAWINGS.DWG
SEPTEMBER 20, 2005

DRAWING NAMES

20-UNIT UPPER FLOOR PLAN

REVISIONS

1	11/9/05

PROJECT DATA

DATE: 10/25/05
DRAWN BY: CL
CHECKED BY: P.W.

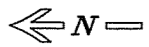
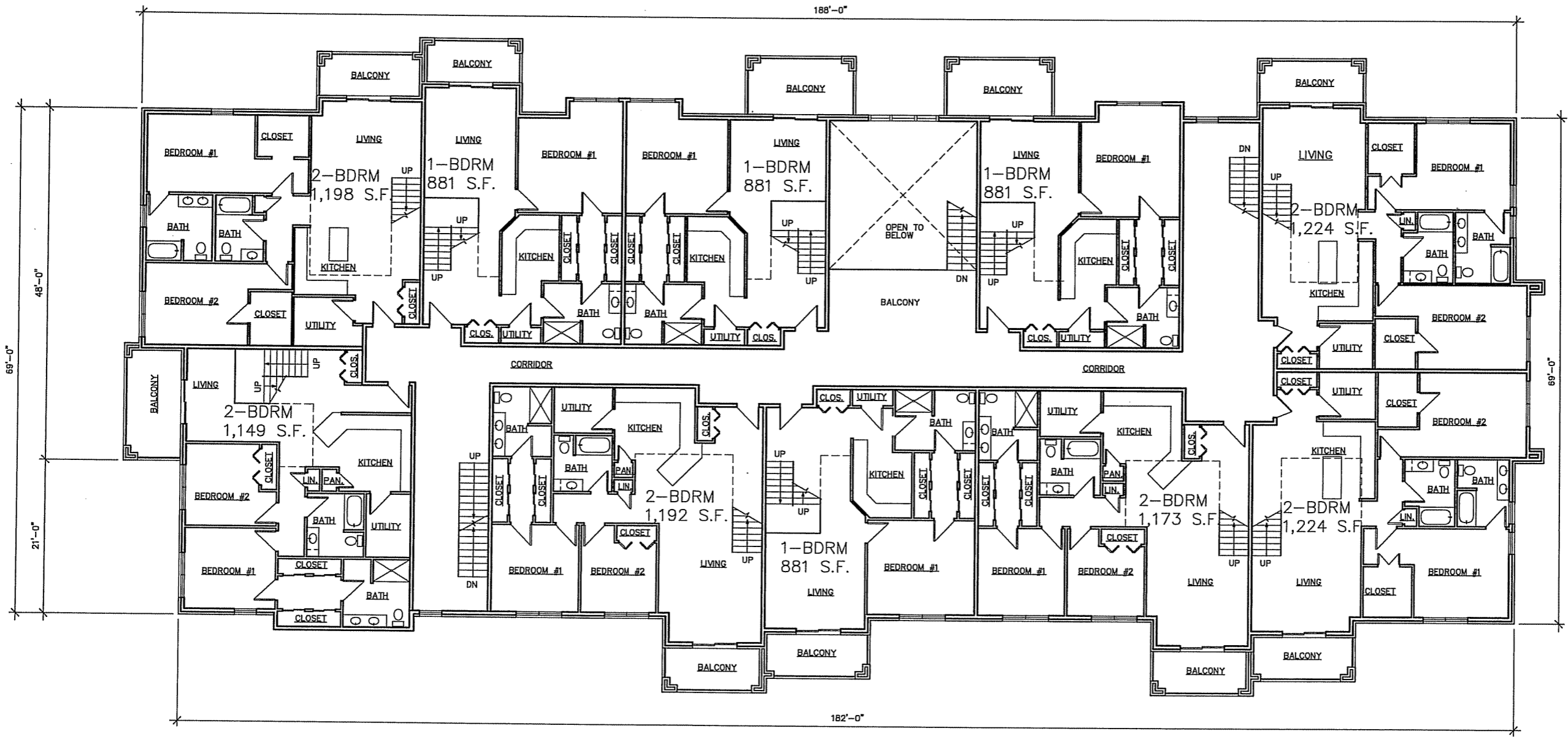
SHEET NO.

A-3

VERIFY ALL CONDITIONS AND DIMENSIONS ON THE JOB AND NOTIFY THE DESIGN ALLIANCE ARCHITECTS, INC. OF ANY DISCREPANCIES PRIOR TO START.

Design Alliance Architects, Inc.
 1001 Madison Avenue
 Fort Atkinson, WI
 (920) 563-3404
 FAX (920) 568-7058

PRELIMINARY
 NOT FOR
 CONSTRUCTION
MAYWICK APARTMENTS
 6322 Maywick Drive
 Madison, WI



20
A4

20-UNIT UPPER FLOOR PLAN
 SCALE: 1/8" = 1'-0"
 2005\MAYWICK APARTMENTS\MA-DRAWINGS.DWG
 SEPTEMBER 20, 2005

DRAWING NAMES

20-UNIT LOFT
 FLOOR PLAN

REVISIONS

1	11/9/05

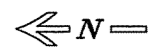
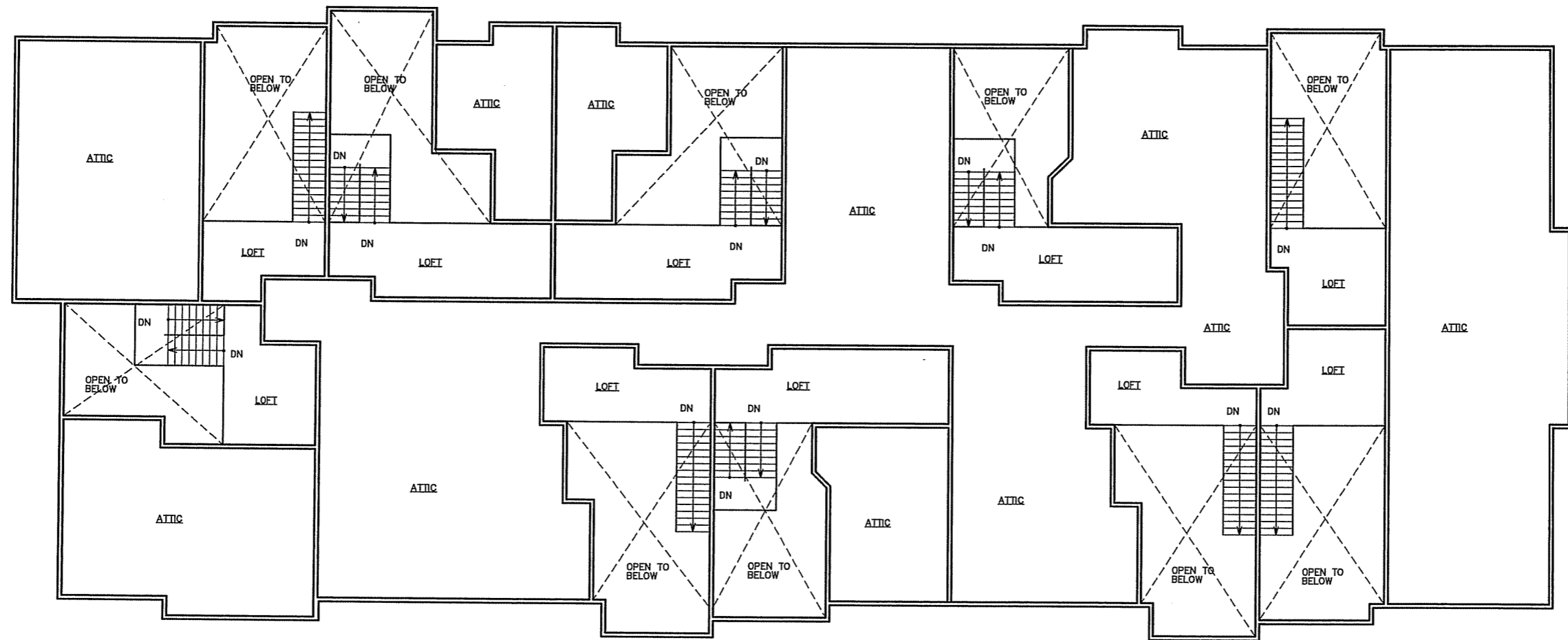
PROJECT DATA

DATE: 10/25/05
 DRAWN BY: CL
 CHECKED BY: P.W.

SHEET NO.

A-4

VERIFY ALL CONDITIONS AND DIMENSIONS
ON THE JOB AND NOTIFY THE DESIGN
ALLIANCE ARCHITECTS, INC. OF ANY
DISCREPANCIES PRIOR TO START.



20
A5

20-UNIT LOFT FLOOR PLAN
SCALE: 1/8" = 1'-0"
2005\MAYWICK APARTMENTS\MA-DRAWINGS.DWG
SEPTEMBER 20, 2005

Design Alliance Architects, Inc.
1001 Madison Avenue
Fort Atkinson, WI
(920) 563-3404
FAX (920) 568-7058

MAYWICK APARTMENTS
6322 Maywick Drive
Madison, WI

*PRELIMINARY
NOT FOR
CONSTRUCTION*

DRAWING NAMES	
20-UNIT LOFT	
FLOOR PLAN	

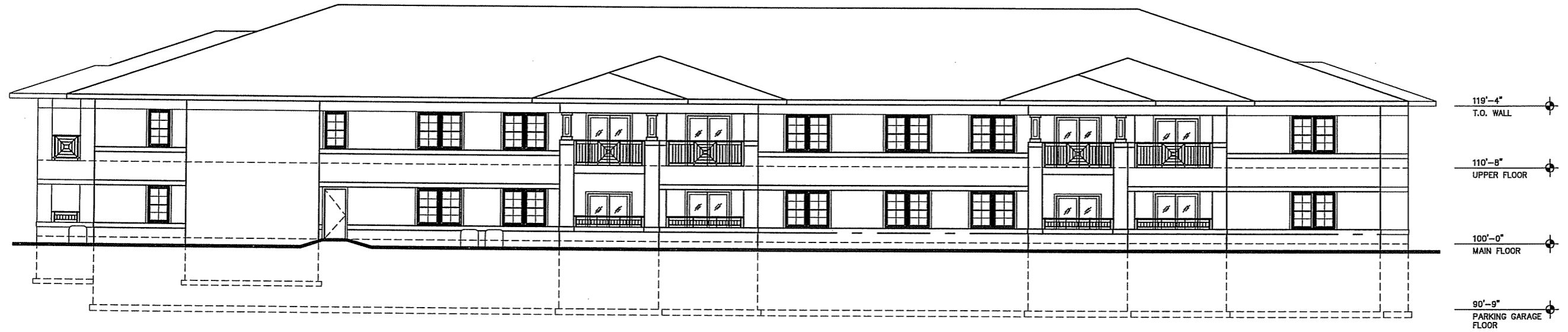
REVISIONS	
1	11/9/05

PROJECT DATA
DATE: 10/25/05
DRAWN BY: CL
CHECKED BY: P.W.

SHEET NO.

A-5

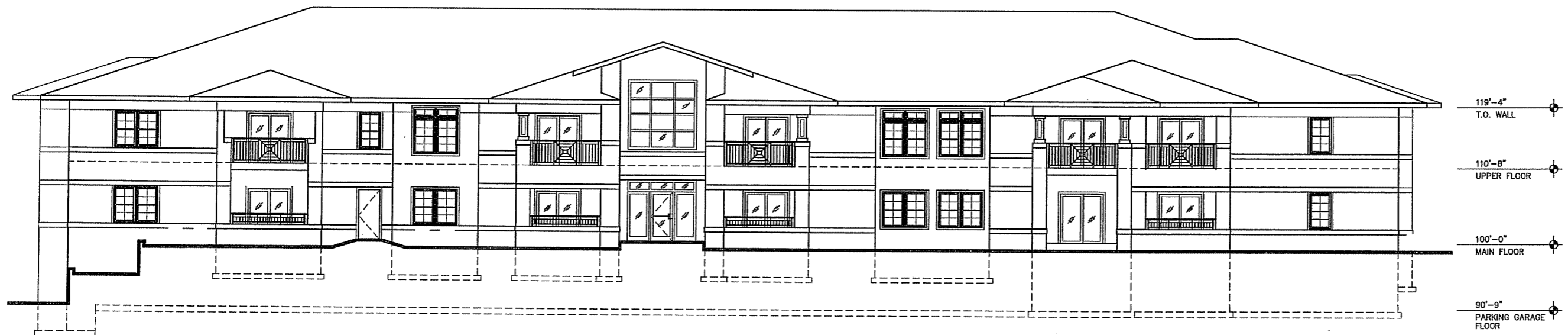
VERIFY ALL CONDITIONS AND DIMENSIONS
ON THE JOB AND NOTIFY THE DESIGN
ALLIANCE ARCHITECTS, INC. OF ANY
DISCREPANCIES PRIOR TO START.



WEST ELEVATION

10
A6

20-UNIT WEST ELEVATION
SCALE: 1/8" = 1'-0"
2005\MAYWICK APARTMENTS\MA-DRAWINGS.DWG
SEPTEMBER 20, 2005



EAST ELEVATION

20
A6

20-UNIT EAST ELEVATION
SCALE: 1/8" = 1'-0"
2005\MAYWICK APARTMENTS\MA-DRAWINGS.DWG
SEPTEMBER 20, 2005

Design Alliance Architects, Inc.
1001 Madison Avenue
Fort Atkinson, WI
(920) 563-3404
FAX (920) 568-7056

PRELIMINARY
NOT FOR
CONSTRUCTION

MAYWICK APARTMENTS
6322 Maywick Drive
Madison, WI

DRAWING NAMES

20-UNIT
ELEVATIONS

REVISIONS

1	11/9/05
---	---------

PROJECT DATA

DATE: 10/25/05
DRAWN BY: CL
CHECKED BY: P.W.

SHEET NO.

A-6

VERIFY ALL CONDITIONS AND DIMENSIONS ON THE JOB AND NOTIFY THE DESIGN ALLIANCE ARCHITECTS, INC. OF ANY DISCREPANCIES PRIOR TO START.



EAST ELEVATION

18
A7

20-UNIT SOUTH ELEVATION

SCALE: 1/8" = 1'-0"
2005\MAYWICK APARTMENTS\MA-DRAWINGS.DWG
SEPTEMBER 20, 2005



17
A7

SITE SIGNAGE

SCALE: 3/4" = 1'-0"
2005\MAYWICK APARTMENTS\MA-DRAWINGS.DWG
SEPTEMBER 20, 2005



WEST ELEVATION

20
A7

20-UNIT NORTH ELEVATION

SCALE: 1/8" = 1'-0"
2005\MAYWICK APARTMENTS\MA-DRAWINGS.DWG
SEPTEMBER 20, 2005

Design Alliance Architects, Inc.
1001 Madison Avenue
Fort Atkinson, WI
(920) 563-3404
FAX (920) 568-7058

PRELIMINARY
NOT FOR
CONSTRUCTION

MAYWICK APARTMENTS
6322 Maywick Drive
Madison, WI

DRAWING NAMES

20-UNIT
ELEVATIONS

REVISIONS

1	11-9-05
---	---------

PROJECT DATA

DATE: 10/25/05
DRAWN BY: CL
CHECKED BY: P.W.

SHEET NO.

A-7

VERIFY ALL CONDITIONS AND DIMENSIONS ON THE JOB AND NOTIFY THE DESIGN ALLIANCE ARCHITECTS, INC. OF ANY DISCREPANCIES PRIOR TO START.

iDesign
Alliance Architects, Inc.
1001 Madison Avenue
Fort Atkinson, WI
(920) 563-3404
FAX (920) 568-7058

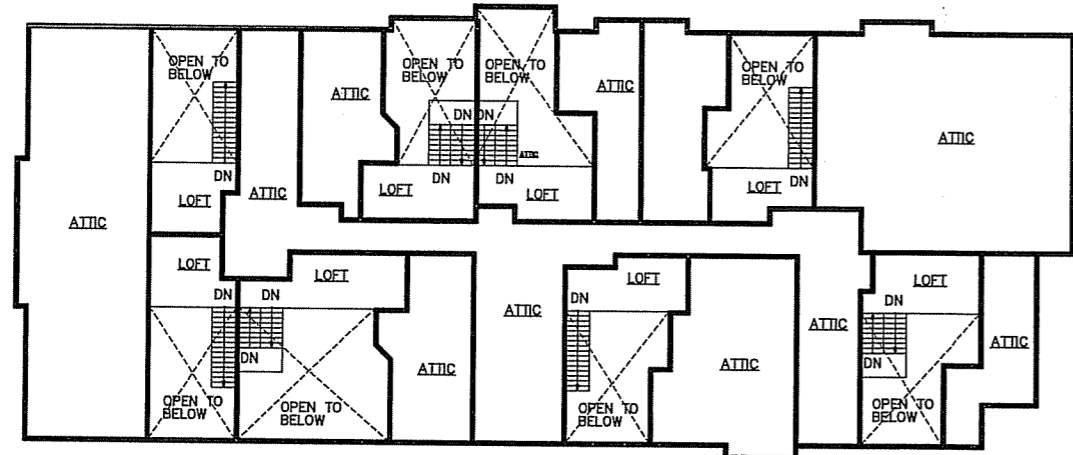
MAYWICK APARTMENT
6322 Maywick Drive
Madison, WI

DRAWING NAMES
18-UNIT PARKING GARAGE FLOOR PLAN

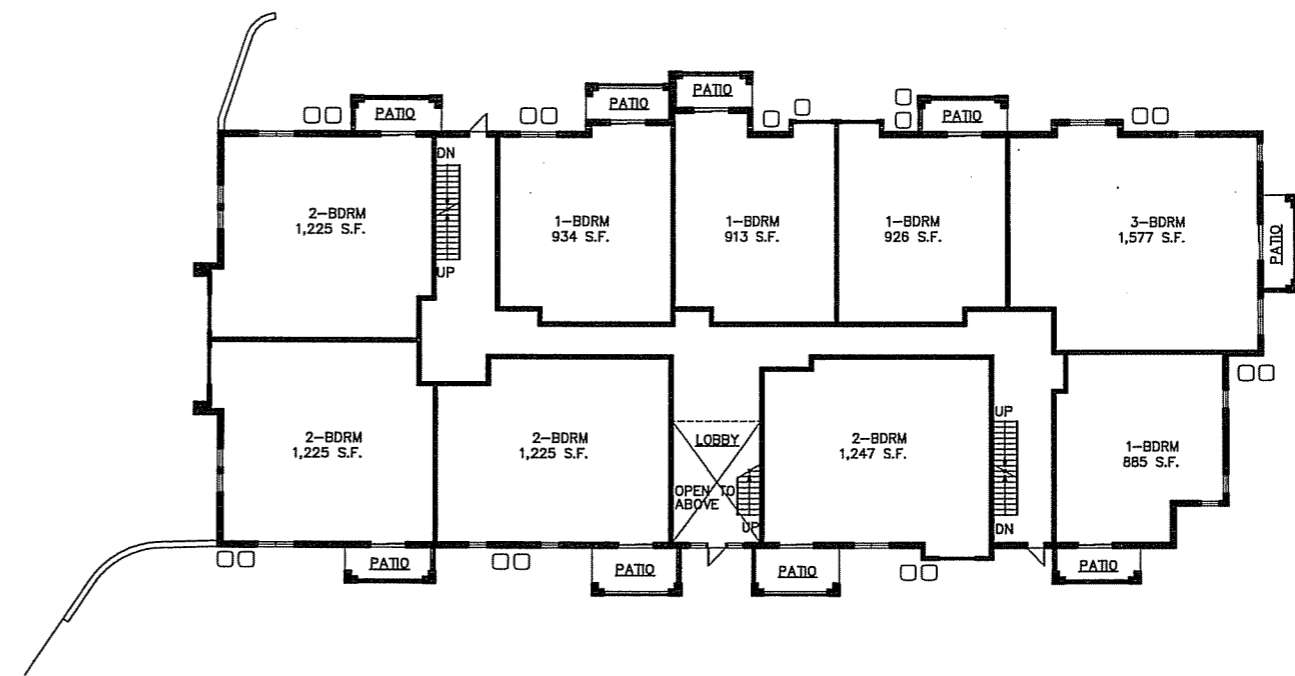
REVISIONS
1 11/9/05

PROJECT DATA
DATE: 10/25/05
DRAWN BY: CL
CHECKED BY: P.W.
SHEET NO.

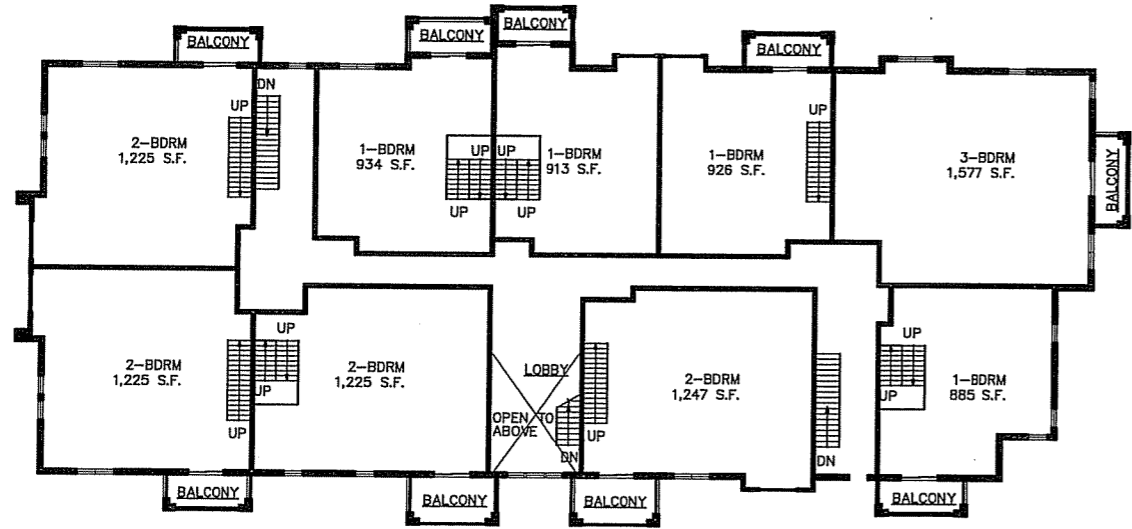
A-8



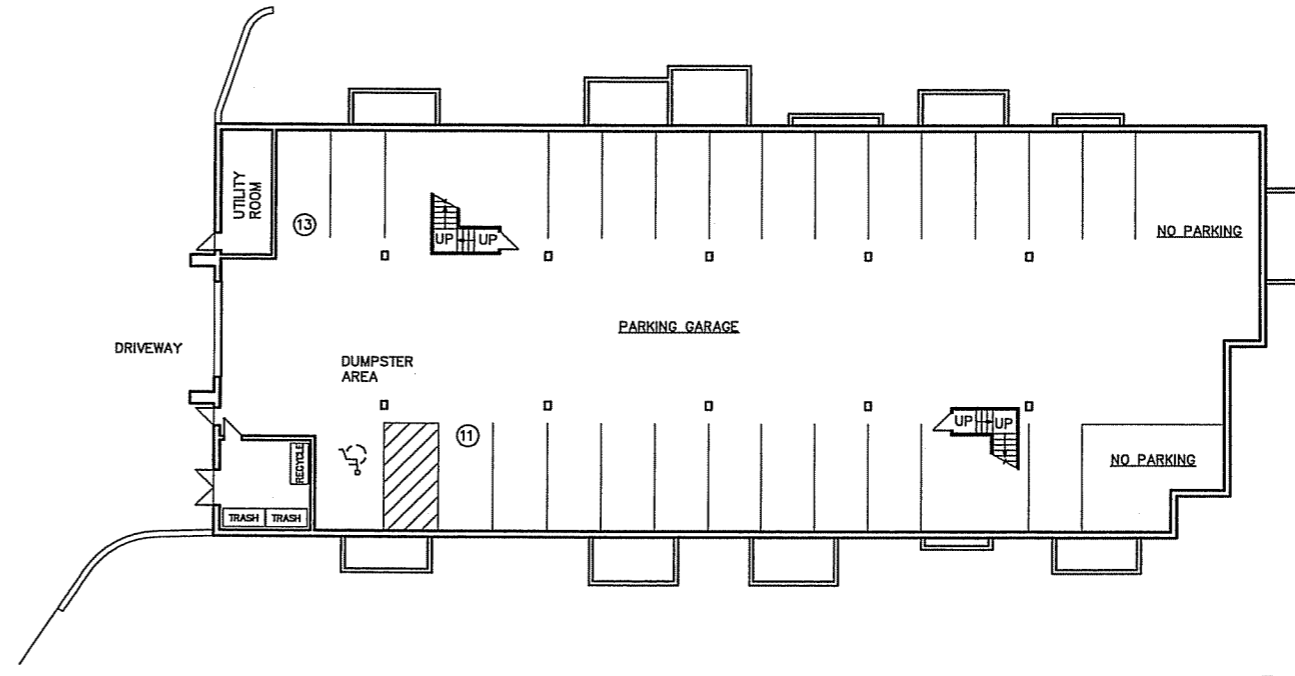
8
AB
18-UNIT LOFT FLOOR PLAN
SCALE: 1/8" = 1'-0"
2005\MAYWICK APARTMENTS\MA-DRAWINGS.DWG
SEPTEMBER 20, 2005



10
AB
18-UNIT MAIN FLOOR PLAN
SCALE: 1/8" = 1'-0"
2005\MAYWICK APARTMENTS\MA-DRAWINGS.DWG
SEPTEMBER 20, 2005

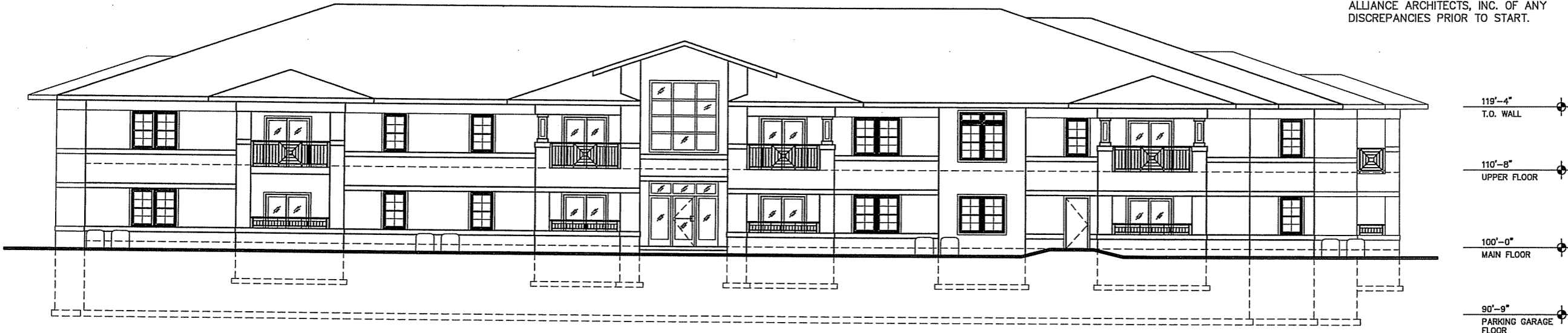


18
AB
18-UNIT UPPER FLOOR PLAN
SCALE: 1/8" = 1'-0"
2005\MAYWICK APARTMENTS\MA-DRAWINGS.DWG
SEPTEMBER 20, 2005



20
AB
18-UNIT PARKING GARAGE FLOOR PLAN
SCALE: 1/8" = 1'-0"
2005\MAYWICK APARTMENTS\MA-DRAWINGS.DWG
SEPTEMBER 20, 2005

VERIFY ALL CONDITIONS AND DIMENSIONS ON THE JOB AND NOTIFY THE DESIGN ALLIANCE ARCHITECTS, INC. OF ANY DISCREPANCIES PRIOR TO START.

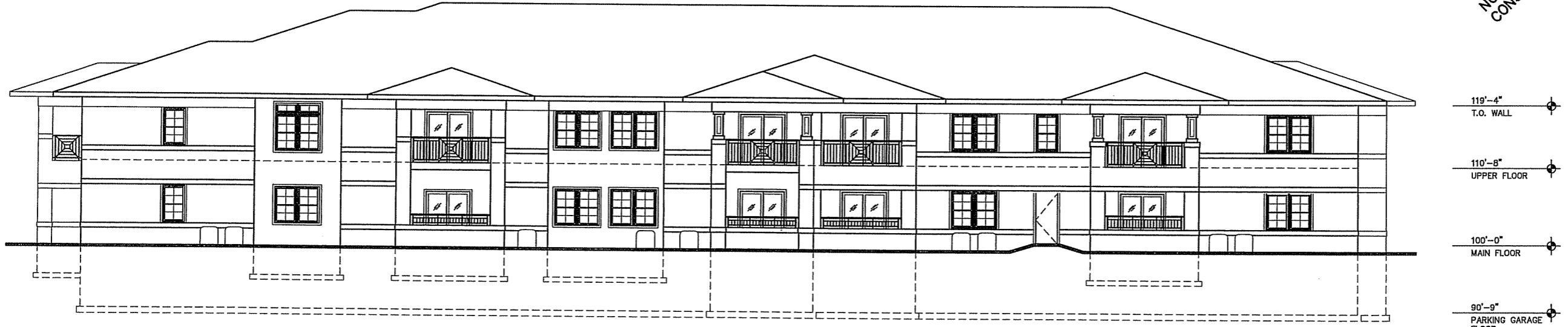


SOUTH ELEVATION

10
A9

18-UNIT SOUTH ELEVATION
SCALE: 1/8" = 1'-0"
2005\MAYWICK APARTMENTS\MA-DRAWINGS.DWG
SEPTEMBER 20, 2005

PRELIMINARY
NOT FOR
CONSTRUCTION



NORTH ELEVATION

20
A9

18-UNIT NORTH ELEVATION
SCALE: 1/8" = 1'-0"
2005\MAYWICK APARTMENTS\MA-DRAWINGS.DWG
SEPTEMBER 20, 2005

Design Alliance Architects, Inc.
1001 Madison Avenue
Fort Atkinson, WI
(920) 563-3404
FAX (920) 568-7058

MAYWICK APARTMENTS
6322 Maywick Drive
Madison, WI

DRAWING NAMES

18-UNIT ELEVATIONS	

REVISIONS

1	11/9/05

PROJECT DATA

DATE: 10/25/05
DRAWN BY: CL
CHECKED BY: P.W.

SHEET NO.

A-9

VERIFY ALL CONDITIONS AND DIMENSIONS ON THE JOB AND NOTIFY THE DESIGN ALLIANCE ARCHITECTS, INC. OF ANY DISCREPANCIES PRIOR TO START.



EAST ELEVATION

10
A10 18-UNIT EAST ELEVATION
SCALE: 1/8" = 1'-0"
2005\MAYWICK APARTMENTS\MA-DRAWINGS.DWG
SEPTEMBER 20, 2005



WEST ELEVATION

20
A10 18-UNIT WEST ELEVATION
SCALE: 1/8" = 1'-0"
2005\MAYWICK APARTMENTS\MA-DRAWINGS.DWG
SEPTEMBER 20, 2005

Design Alliance Architects, Inc.
1001 Madison Avenue
Fort Atkinson, WI
(920) 563-3404
FAX (920) 566-7058

MAYWICK APARTMENTS
6322 Maywick Drive
Madison, WI

DRAWING NAMES

18-UNIT ELEVATIONS

REVISIONS

1	11/9/05

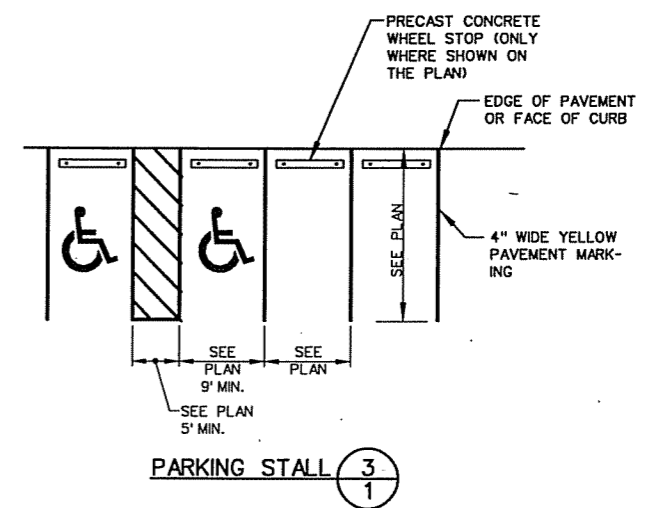
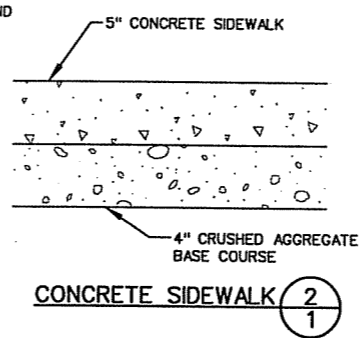
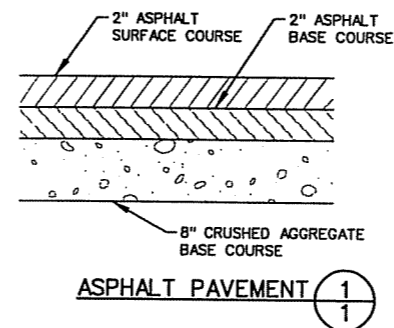
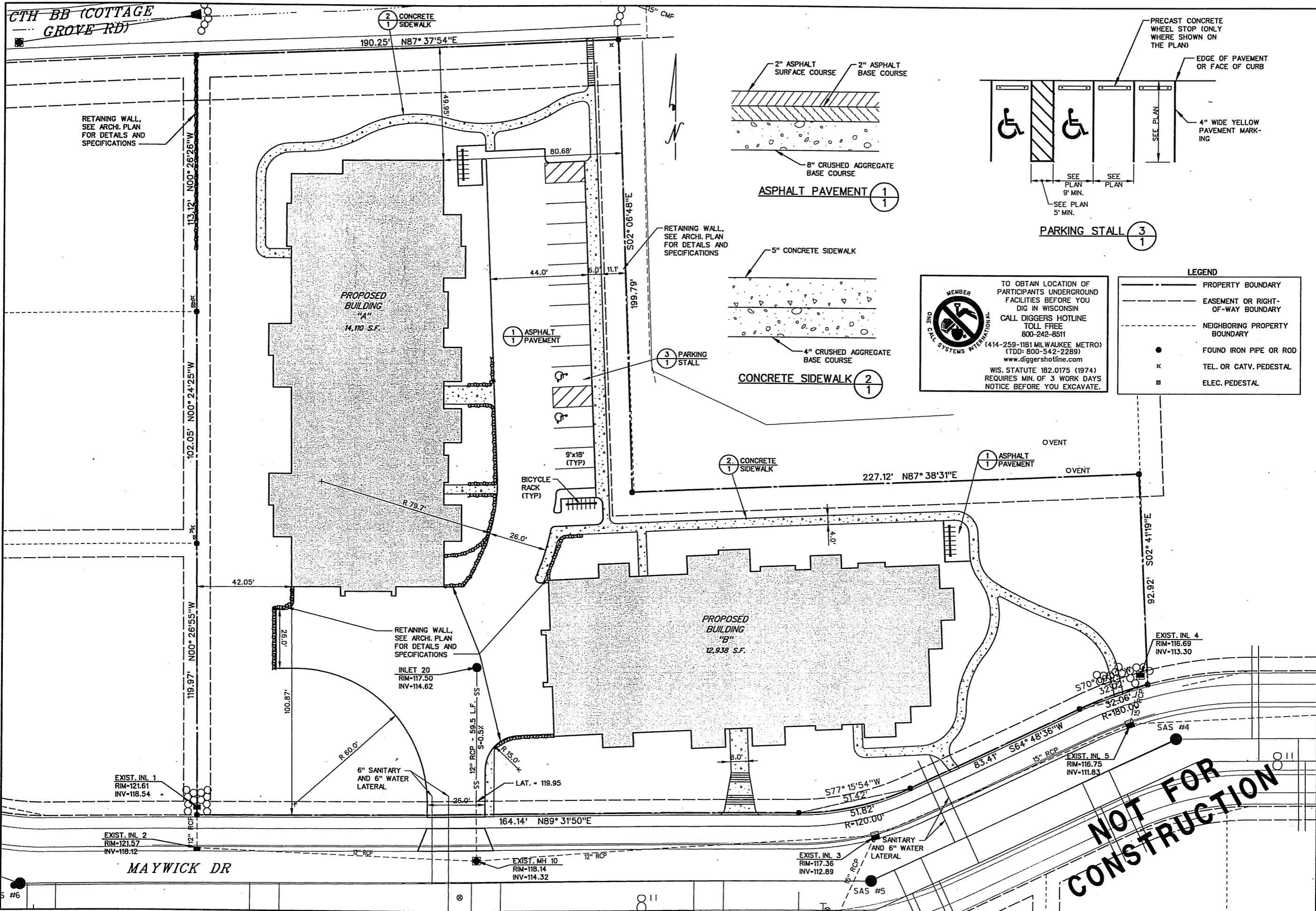
PROJECT DATA

DATE: 10/25/05
DRAWN BY: CL
CHECKED BY: P.W.

SHEET NO.

A-10

CTH BB (COTTAGE GROVE RD)



MEMBER
ONE CALL SYSTEMS INTERNATIONAL

TO OBTAIN LOCATION OF PARTICIPANTS UNDERGROUND FACILITIES BEFORE YOU DIG IN WISCONSIN
CALL DIGGERS HOTLINE TOLL FREE 800-242-8511
(414-259-1181 MILWAUKEE METRO) (TDD: 800-542-2289) www.diggershotline.com
WIS. STATUTE 182.0175 (1974) REQUIRES MIN. OF 3 WORK DAYS NOTICE BEFORE YOU EXCAVATE.

LEGEND

---	PROPERTY BOUNDARY
- - - -	EASEMENT OR RIGHT-OF-WAY BOUNDARY
- · - · -	NEIGHBORING PROPERTY BOUNDARY
●	FOUND IRON PIPE OR ROD
⊗	TEL. OR CATV. PEDESTAL
⊕	ELEC. PEDESTAL

NOT FOR CONSTRUCTION

RSV ENGINEERING, INC.
Engineers • Land Surveyors • Environmental Scientists
112 S. MAIN STREET JEFFERSON, WISCONSIN 53549 (920) 674-3411

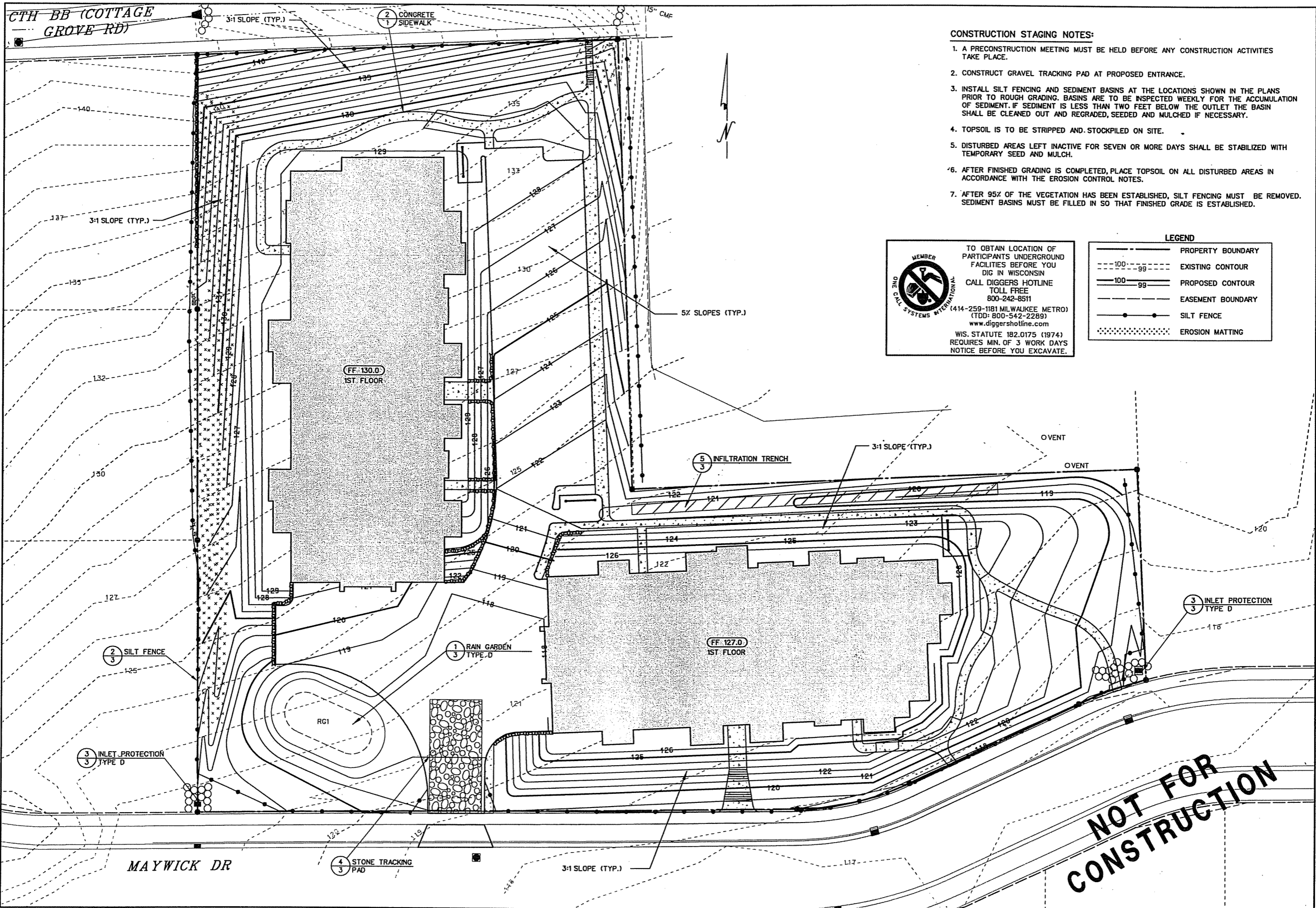
MAYWICK APTS.
MAYWICK ESTATES
MADISON, WI

PROJECT	EVENT	HISTORY	DATE

SITE PLAN

DRAWN BY: GLE
DSGND BY: WJP
APRVD BY:

0' 20'
SHEET NO. C1 OF C3



CONSTRUCTION STAGING NOTES:

1. A PRECONSTRUCTION MEETING MUST BE HELD BEFORE ANY CONSTRUCTION ACTIVITIES TAKE PLACE.
2. CONSTRUCT GRAVEL TRACKING PAD AT PROPOSED ENTRANCE.
3. INSTALL SILT FENCING AND SEDIMENT BASINS AT THE LOCATIONS SHOWN IN THE PLANS PRIOR TO ROUGH GRADING. BASINS ARE TO BE INSPECTED WEEKLY FOR THE ACCUMULATION OF SEDIMENT. IF SEDIMENT IS LESS THAN TWO FEET BELOW THE OUTLET THE BASIN SHALL BE CLEANED OUT AND REGRADED, SEEDED AND MULCHED IF NECESSARY.
4. TOPSOIL IS TO BE STRIPPED AND STOCKPILED ON SITE.
5. DISTURBED AREAS LEFT INACTIVE FOR SEVEN OR MORE DAYS SHALL BE STABILIZED WITH TEMPORARY SEED AND MULCH.
6. AFTER FINISHED GRADING IS COMPLETED, PLACE TOPSOIL ON ALL DISTURBED AREAS IN ACCORDANCE WITH THE EROSION CONTROL NOTES.
7. AFTER 95% OF THE VEGETATION HAS BEEN ESTABLISHED, SILT FENCING MUST BE REMOVED. SEDIMENT BASINS MUST BE FILLED IN SO THAT FINISHED GRADE IS ESTABLISHED.

MEMBER

 ONE CALL SYSTEMS INTERNATIONAL

TO OBTAIN LOCATION OF PARTICIPANTS UNDERGROUND FACILITIES BEFORE YOU DIG IN WISCONSIN
 CALL DIGGERS HOTLINE
 TOLL FREE
 800-242-8511
 (414-259-1181 MILWAUKEE METRO)
 (TDD: 800-542-2289)
 www.diggershotline.com

WIS. STATUTE 182.0175 (1974)
 REQUIRES MIN. OF 3 WORK DAYS NOTICE BEFORE YOU EXCAVATE.

LEGEND

	PROPERTY BOUNDARY
	EXISTING CONTOUR
	PROPOSED CONTOUR
	EASEMENT BOUNDARY
	SILT FENCE
	EROSION MATTING

ERSV
ENGINEERING, INC.
 Engineers • Land Surveyors • Environmental Scientists
 112 S. MAIN STREET JEFFERSON, WISCONSIN 53549 (920)674-3411

MAYWICK APTS.
 MAYWICK ESTATES
 MADISON, WI

PROJECT EVENT HISTORY	DATE

GRADING AND
 EROSION CONTROL
 PLAN

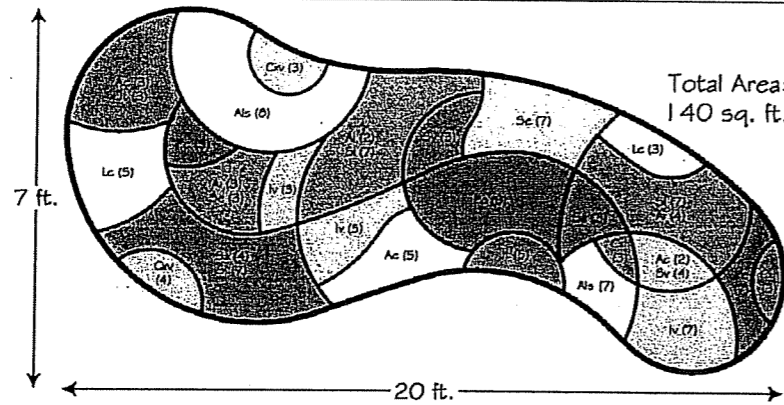
DRAWN BY: GLE
 DSCND BY: WJP
 APRVD BY:

0' 20'

SHEET NO.
C2
 OF
C3

**NOT FOR
 CONSTRUCTION**

20 feet wide; full to partial sun with clay soils



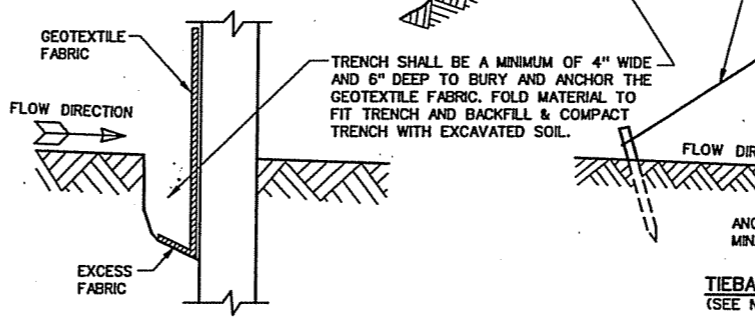
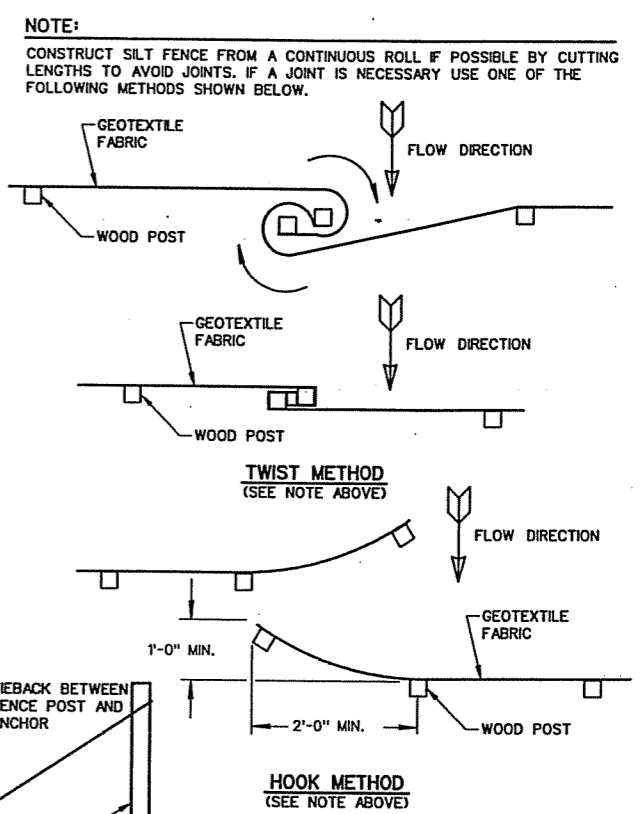
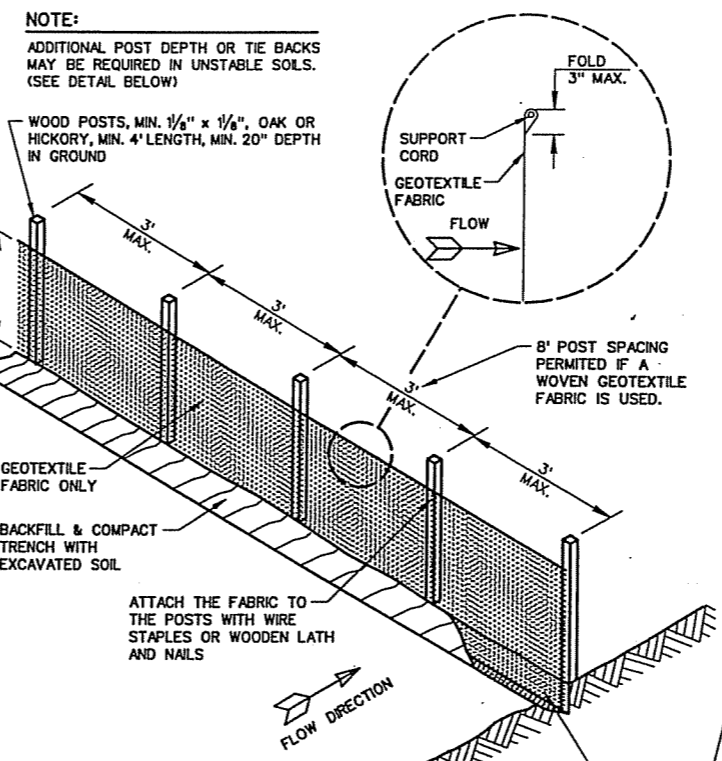
Symbol	Species Name	Common Name	No. of Plants
Ac	Acorus calamus	Sweet flag	10
Al	Asclepias incarnata	Swamp milkweed	9
Als	Alisma subcordatum	Water plantain	15
Cxh	Carex hystrioides	Bottle brush sedge	6
Cxv	Carex vilpinoidea	Fox sedge	7
Iv	Iris virginica-shrevei	Wild blue flag iris	15
Jt	Juncus torreyi	Torrey's rush	8
Lc	Lobelia cardinalis	Cardinal flower	8
Pc	Pontederica cordata	Pickeral weed	21
Sl	Sagittaria latifolia	Arrowhead	21
Sa	Scirpus atrovirens	Green bulrush	7
Sv	Scirpus validus creber	Soft-stemmed bulrush	7
Se	Sparganium eurycarpum	Common bur-reed	10
Total Plants needed			144

RAIN GARDEN	SIZE (S.F.)
RG1	1380

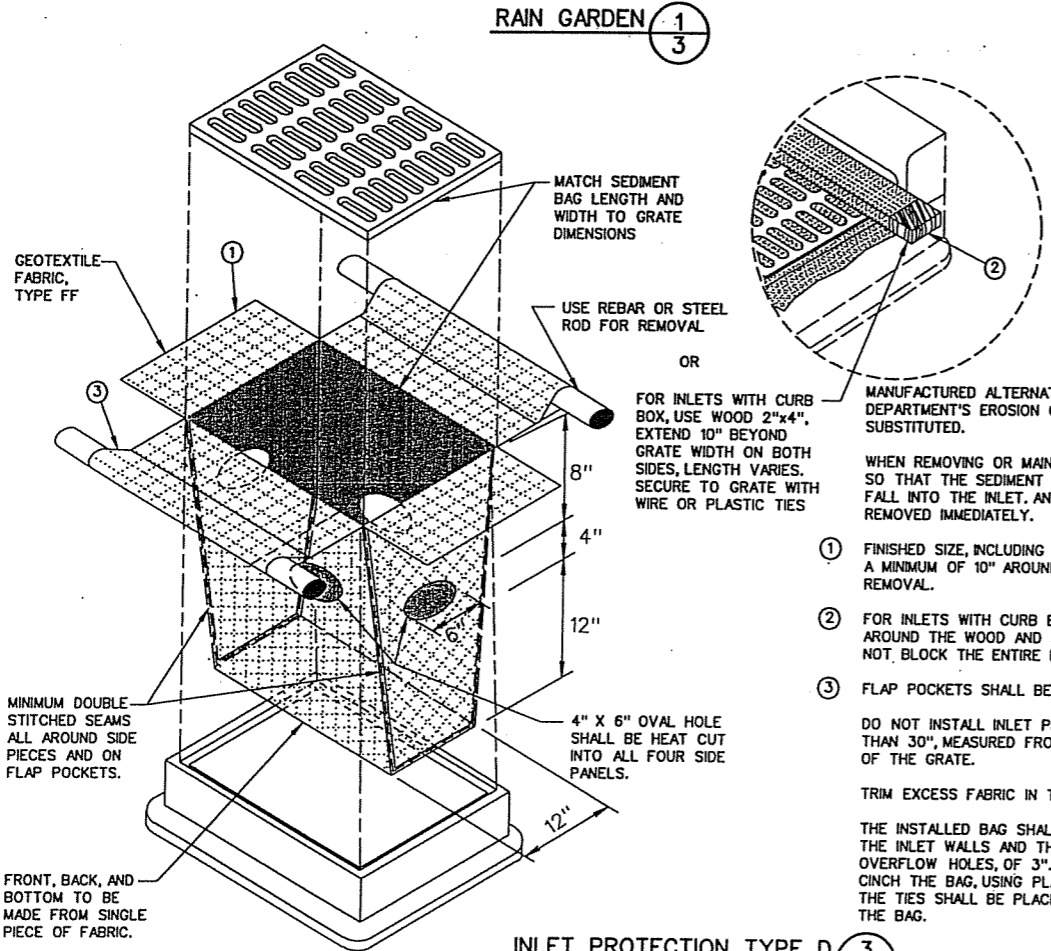
Rain Gardens - A how-to manual for homeowners 21

<http://dnr.wi.gov/org/water/wm/dsfm/shore/documents/rgmanual.pdf>

NOTE: RAIN GARDEN BASED ON 140 S.F. AREA, EQUALING APPROXIMATELY ONE PLANT PER S.F. CONFIGURATION SHALL BE APPLIED TO ACTUAL RAIN GARDEN DESIGN SIZE. RAIN GARDEN DESIGNS BASED ON MANUAL ENTITLED "RAIN GARDENS - A HOW-TO MANUAL FOR HOMEOWNERS".

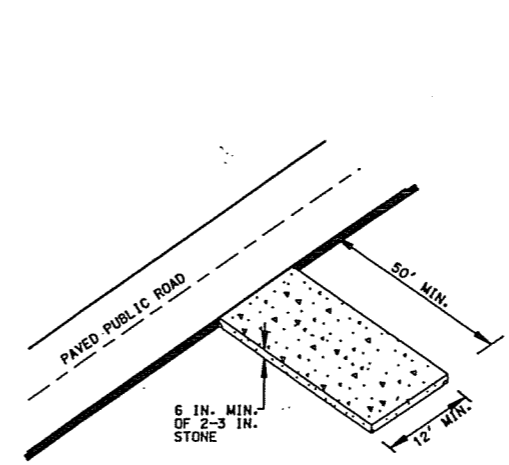


SILT FENCE 2/3

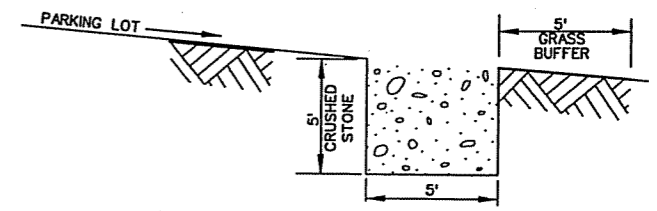


INLET PROTECTION, TYPE D 3/3

- MANUFACTURED ALTERNATIVES APPROVED AND LISTED ON THE DEPARTMENT'S EROSION CONTROL PRODUCT ACCEPTABILITY LIST MAY BE SUBSTITUTED.
- WHEN REMOVING OR MAINTAINING INLET PROTECTION, CARE SHALL BE TAKEN SO THAT THE SEDIMENT TRAPPED ON THE GEOTEXTILE FABRIC DOES NOT FALL INTO THE INLET. ANY MATERIAL FALLING INTO THE INLET SHALL BE REMOVED IMMEDIATELY.
- FINISHED SIZE, INCLUDING FLAP POCKETS WHERE REQUIRED, SHALL EXTEND A MINIMUM OF 10" AROUND THE PERIMETER TO FACILITATE MAINTENANCE OR REMOVAL.
 - FOR INLETS WITH CURB BOX, AN ADDITIONAL 18" OF FABRIC IS WRAPPED AROUND THE WOOD AND SECURED WITH STAPLES. THE WOOD SHALL NOT BLOCK THE ENTIRE HEIGHT OF THE CURB BOX OPENING.
 - FLAP POCKETS SHALL BE LARGE ENOUGH TO ACCEPT WOOD 2"x4."
- DO NOT INSTALL INLET PROTECTION TYPE D IN INLETS SHALLOWER THAN 30", MEASURED FROM THE BOTTOM OF THE INLET TO THE TOP OF THE GRATE.
- TRIM EXCESS FABRIC IN THE FLOW LINE TO WITHIN 3" OF THE GRATE.
- THE INSTALLED BAG SHALL HAVE A MINIMUM SIDE CLEARANCE, BETWEEN THE INLET WALLS AND THE BAG, MEASURED AT THE BOTTOM OF THE OVERFLOW HOLES, OF 3". WHERE NECESSARY THE CONTRACTOR SHALL CINCH THE BAG, USING PLASTIC ZIP TIES, TO ACHIEVE THE 3" CLEARANCE. THE TIES SHALL BE PLACED AT A MAXIMUM OF 4" FROM THE BOTTOM OF THE BAG.



STONE TRACKING PAD 4/3



INFILTRATION TRENCH 5/3

NOT FOR CONSTRUCTION

RSV ENGINEERING, INC.
 Engineers & Land Surveyors - Environmental Scientists
 112 S. MAIN STREET, JEFFERSON, WISCONSIN 53549 (920)674-3411

MAYWICK APTS
MAYWICK ESTATES
MADISON, WI

PROJECT	EVENT	HISTORY	DATE

TYPICAL DETAILS

DRAWN BY: GLE
 DESIGNED BY: WJP
 APPROVED BY:

0' NTS
 SHEET NO.
C3
 OF
C3