



**2025-2030
DRAFT
Transportation Improvement
Program**

Board Of Public Works
City of Madison Engineering Division & Department of Transportation
March 19, 2024

Outline

- TIP Scoring Tool
- Programs
 - Reconstructions
 - Pavement Management
 - Sidewalk
 - Bikeways
 - Bridge Repair
- Stand Alone Major Projects
 - Surface Transportation Block Grant (STBG)
 - Transportation Alternatives Program (TAP)
 - Other Projects
- State of Streets



TIP

RECONSTRUCTS

Pavements & Utilities with
Critical Needs

Eligible Segment Screening

- Pavements ≤ 4
- Water med. or high risk
- Sanitary ≤ 3
- Proposed Storm
- Platted Roads
- HIN segments
- City-maintained Roads

GIS

Assign Raw Score

- Pavement (0-30)
- Sanitary (0-10)
- Water (0-10)
- Storm (0-10)
- Ped (0-8)
- Bike (0-6)
- Transit (0-6)
- Unique Factors (0-20)

GIS

Weight Segments

- + 5% raw score if on HIN
- + 15% raw score if in equity area

GIS

Scope & Budget

- Assemble into logical groupings
- Eliminated non-reconstructs
- Prioritize Groupings
- Recommend for budget

Discretion

SAFE STREETS

NON-RECONSTRUCTS

Pavements without
critical needs

Identify Needs

- Candidate projects identified through community input, NRTs, staff observations

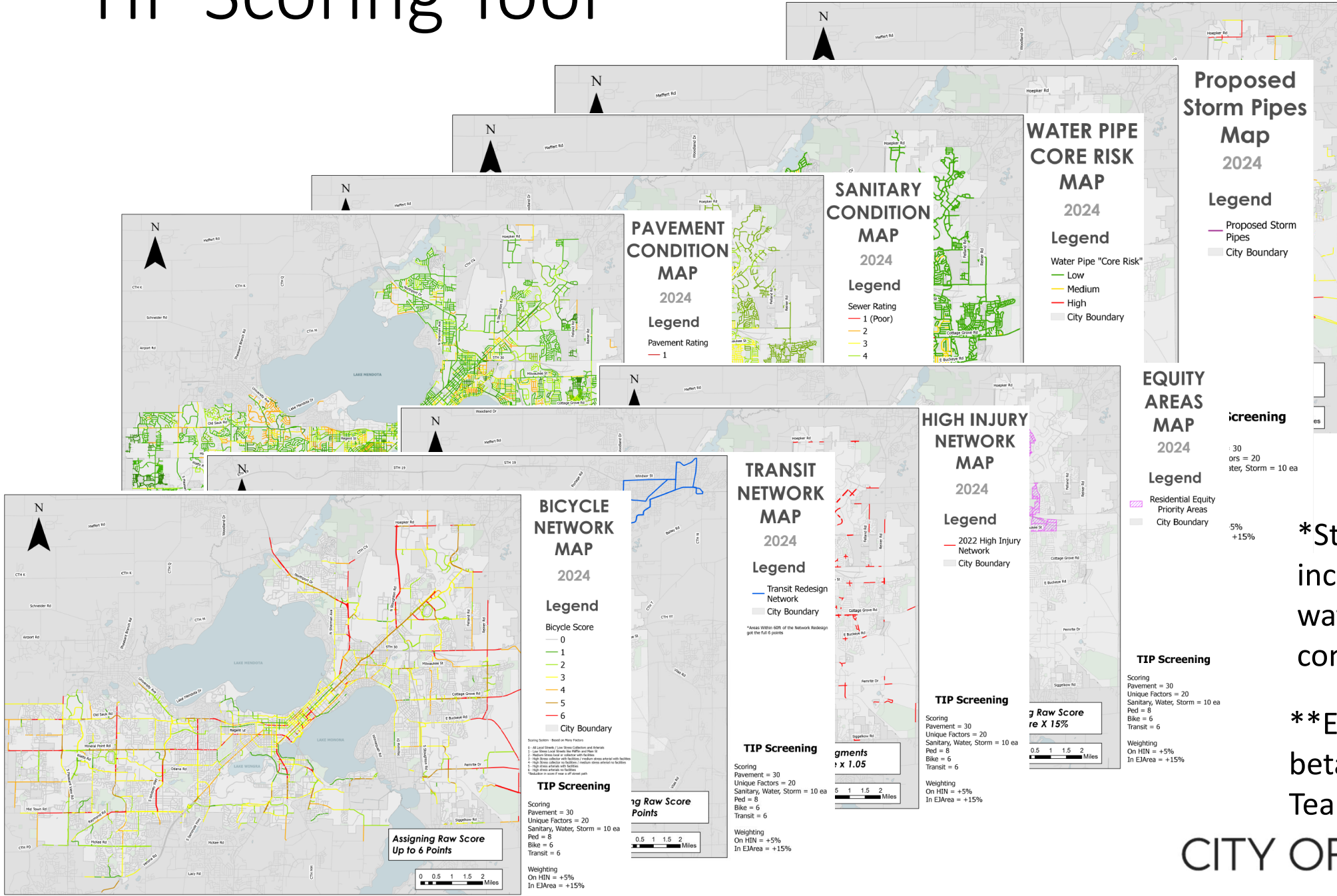
Evaluate Projects

- Evaluate candidate projects using safety, equity, ability to fill gaps, cost as metrics
- Prioritize

TC Approval

- Review evaluation
- Modify prioritization as appropriate
- Approve

TIP Scoring Tool



PEDESTRIAN NEEDS MAP 2024

Legend

Pedestrian Score

- 0
- 3
- 5
- 7
- 8

City Boundary

Scoring System - Based on streets

- 0 - Sidewalks both sides
- 3 - Sidewalks one side
- 5 - No Sidewalk
- 7 - MPO priority sidewalk one side
- 8 - MPO priority sidewalk no sides

TIP Screening

Scoring

- Pavement = 30
- Unique Factors = 20
- Sanitary, Water, Storm = 10 ea
- Ped = 8
- Bike = 6
- Transit = 6

Weighting

- On HIN = +5%
- In EJArea = +15%

Proposed Storm Pipes Map 2024

Legend

- Proposed Storm Pipes
- City Boundary

WATER PIPE CORE RISK MAP 2024

Legend

Water Pipe "Core Risk"

- Low
- Medium
- High

City Boundary

SANITARY CONDITION MAP 2024

Legend

Sewer Rating

- 1 (Poor)
- 2
- 3
- 4

PAVEMENT CONDITION MAP 2024

Legend

Pavement Rating

- 1

EQUITY AREAS MAP 2024

Legend

- Residential Equity Priority Areas
- City Boundary

HIGH INJURY NETWORK MAP 2024

Legend

- 2022 High Injury Network
- City Boundary

TRANSIT NETWORK MAP 2024

Legend

- Transit Redesign Network
- City Boundary

*Areas Within 60ft of the Network Redesign get the full 6 points

BICYCLE NETWORK MAP 2024

Legend

Bicycle Score

- 0
- 1
- 2
- 3
- 4
- 5
- 6

City Boundary

TIP Screening

Scoring

- Pavement = 30
- Unique Factors = 20
- Sanitary, Water, Storm = 10 ea
- Ped = 8
- Bike = 6
- Transit = 6

Weighting

- On HIN = +5%
- In EJArea = +15%

TIP Screening

Scoring

- Pavement = 30
- Unique Factors = 20
- Sanitary, Water, Storm = 10 ea
- Ped = 8
- Bike = 6
- Transit = 6

Weighting

- On HIN = +5%
- In EJArea = +15%

TIP Screening

Scoring

- Pavement = 30
- Unique Factors = 20
- Sanitary, Water, Storm = 10 ea
- Ped = 8
- Bike = 6
- Transit = 6

Weighting

- On HIN = +5%
- In EJArea = +15%

TIP Screening

Scoring

- Pavement = 30
- Unique Factors = 20
- Sanitary, Water, Storm = 10 ea
- Ped = 8
- Bike = 6
- Transit = 6

Weighting

- On HIN = +5%
- In EJArea = +15%

Assigning Raw Score Up to 6 Points

*Storm Pipes are still incomplete until all watershed studies are complete

**Equity Areas are still in beta testing with City Data Team

CITY OF MADISON



2024 Updates to Tool

- Input new pavement ratings (1/2 of streets rated each year)
- All new Sanitary Ratings updated based upon television data
- Storm Pipes updated as Watershed Studies are completed*
 - Still incomplete
- Bicycle needs updated to reflect stress level, road classification, on-street facilities & adjacent side paths
- Pedestrian needs updated to added priority sidewalk gaps from MPO
- Transit network updated to reflect Metro Redesign
- City Data Team created new Equity Areas Map for all city use**
 - Still in beta mode

TIP Scoring Tool

2024

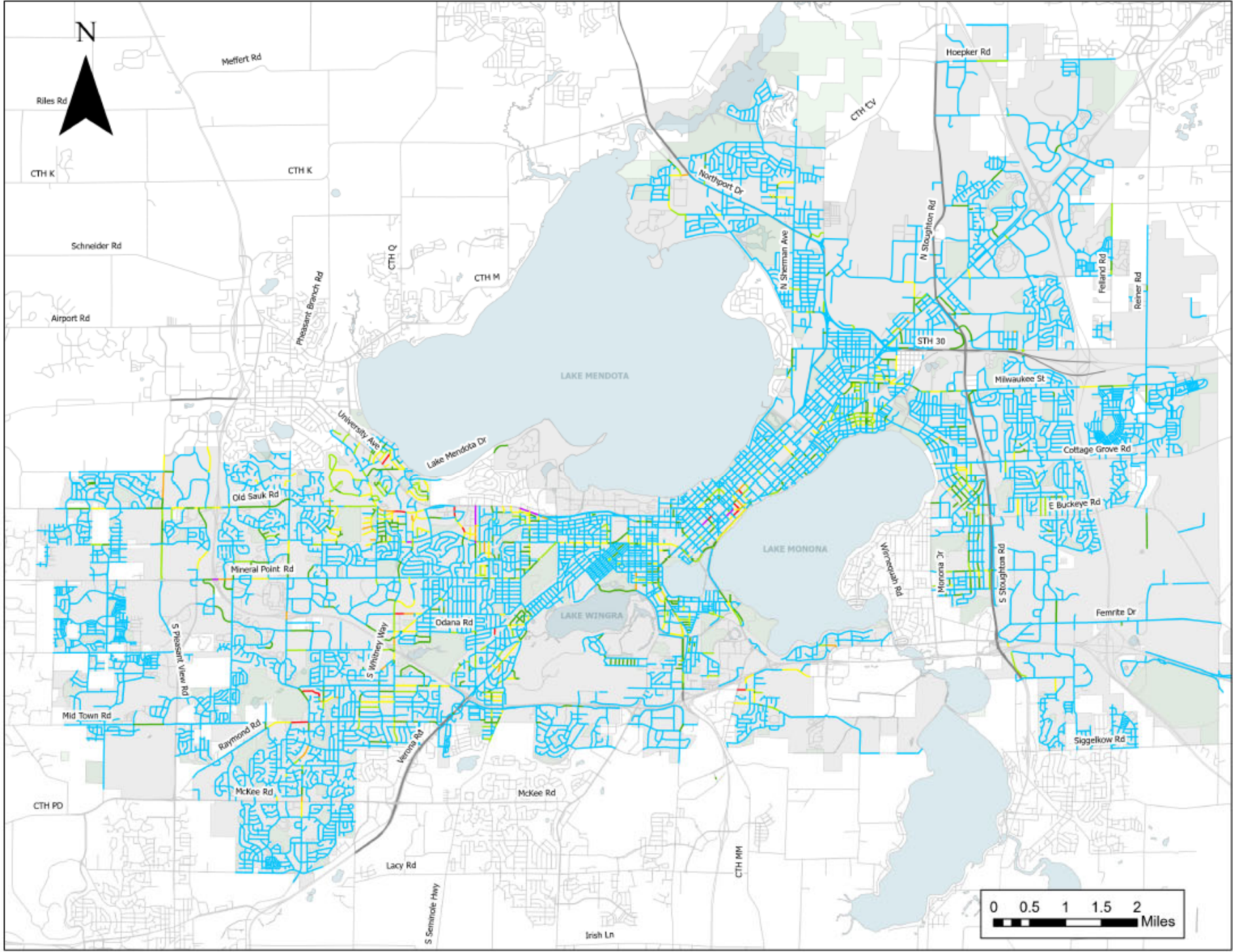
Legend

- Infrastructure Scoring
- 0 - 30 PTS
 - 30 - 35 PTS
 - 35 - 40 PTS
 - 40 - 50 PTS
 - 50 - 55 PTS
 - 55 - 60 PTS
 - 60+
 - City Boundary

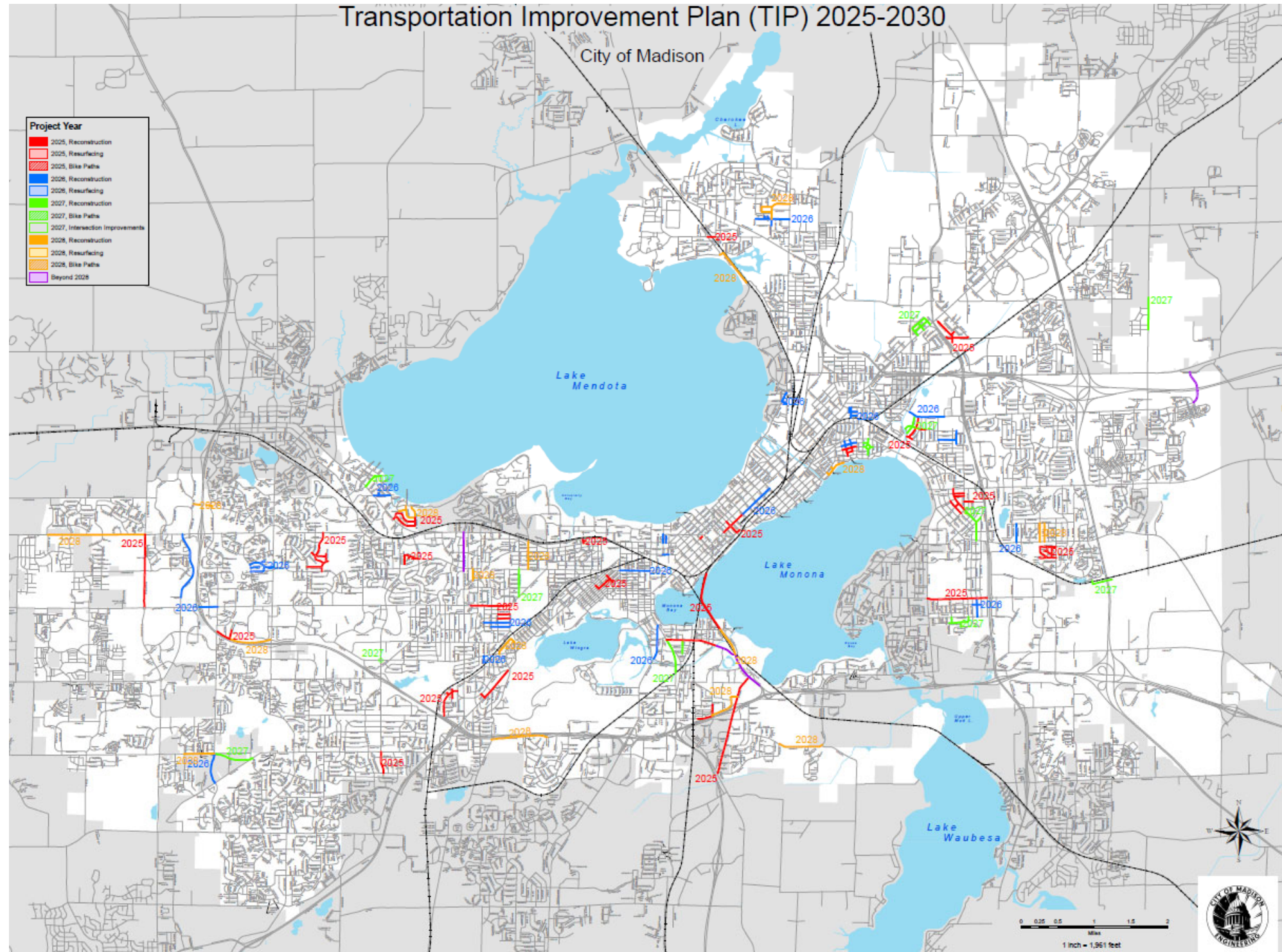
TIP Screening

- Scoring
- Pavement = 30
 - Unique Factors = 20
 - Sanitary, Water, Storm = 10 ea
 - Ped = 8
 - Bike = 6
 - Transit = 6

- Weighting
- On HIN = +5%
 - In EArea = +15%



Draft TIP



Reconstruction Streets Program 2025

- Reconstruct 4.3 Miles
- Evergreen, Center, Willard, Ohio – 38
- Pontiac, Nokomis, Rosewood, Boston – 37
- Davidson, Park, Maher, Gary, Drexel, Monona– 36
- N Rusk – 48
- Birge – 47
- *MacArthur, Larson, Sycamore – 33*
- *Richard, Dawes, Lansing – 14 (MMSD pipe)*
- *Jefferson, Oakland, Grant – 37*
- Nakoma, Shawnee – 46
- State & Mifflin St Plaza - Redevelopment
- Euclid, Birch – 29 (infiltration study area)



CITY OF **MADISON**



Resurfacing Program 2025

- Chip Seal 50-70 mi
- Crack Seal 50-100 mi
- Patching
- Resurfacing 6.4 mi
- Franklin – 51
- Pflaum – 49
- Mineral Point – 39
- Gilbert – 40
- Buffalo, Barron, Green Lake – 40
- *Ozark, Antietam, Shenandoah, Jetty, Natchez – 42*
- Hancock, Main – 44
- Merrill Springs, Tomahawk, Flambeau – 36
- Camilla, Dolores, Loretta, Christine – 34
- *Olin - 45*
- *North Star – 23*
- *Rimrock – county rd*
- Pioneer & Meadow – town rd



Bikeways Program

- Resurfacing paths rated at 5 or lower
 - Marlborough Park
 - Will inspect ½ of city in 2024 and add any new 5's.
- New paths
 - Bartillon Path (new path from Kinsman to Anderson along US51)
 - Pheasant Branch Creek Path
 - Odana Cycle Track
 - North Shore Dr (SW Path to Bedford)



Sidewalk Program

- Ordered Sidewalks
- 2024 District 11 – Bill Tishler
 District 19 – John Guequierre
- 2025* District 10 – Yannette Figueroa Cole
 District 20 – Barbara McKinney
- 2026* District 2 – Juliana Bennett
 District 6 – Marsha Rummel
- Citywide requests
- Metro Bus Pads for Redesign



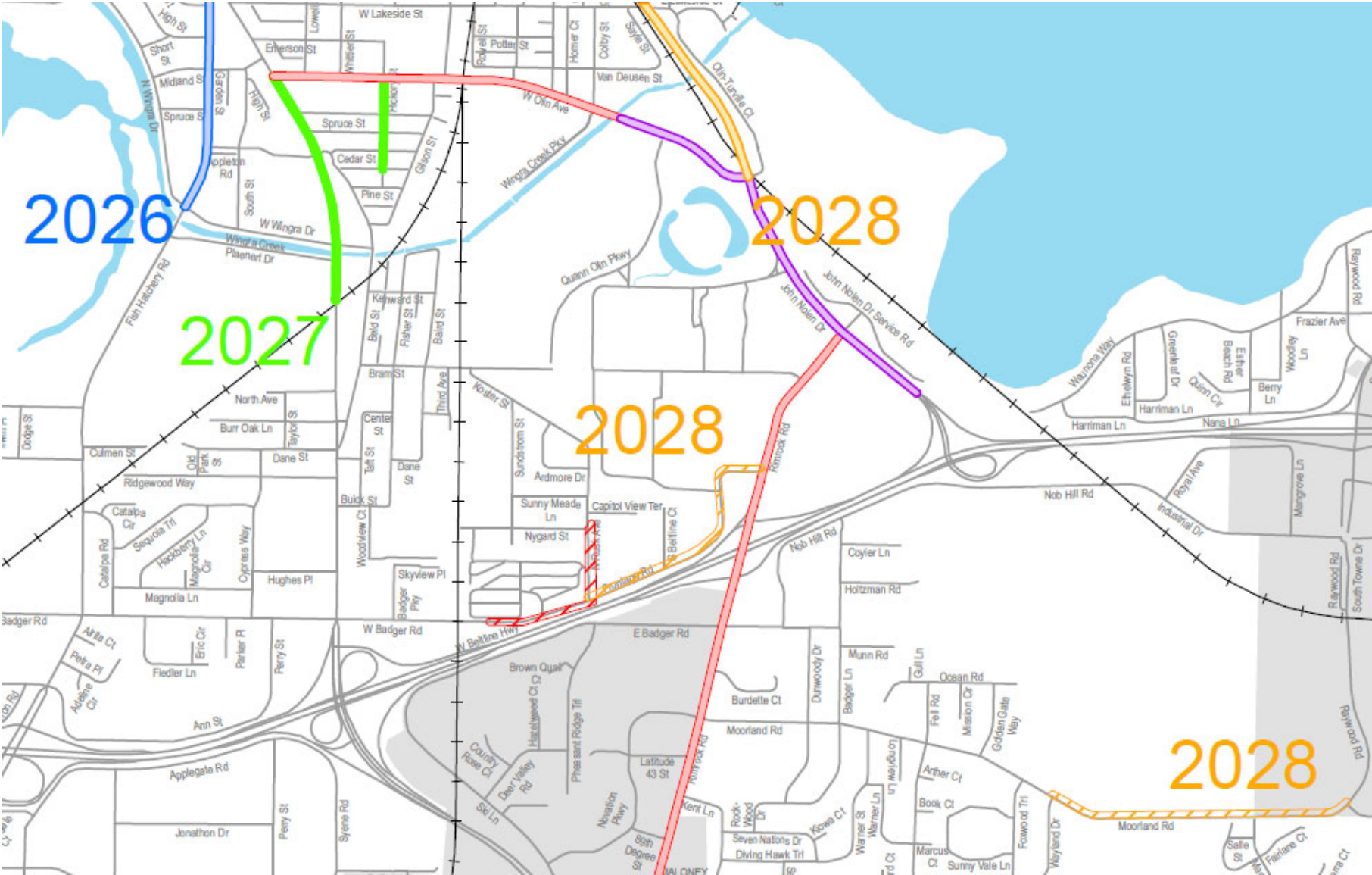
* City Engineering is going to explore possibilities other than aldermanic district to schedule sidewalk repairs, might create regional sidewalk districts

Bridge Repair Program

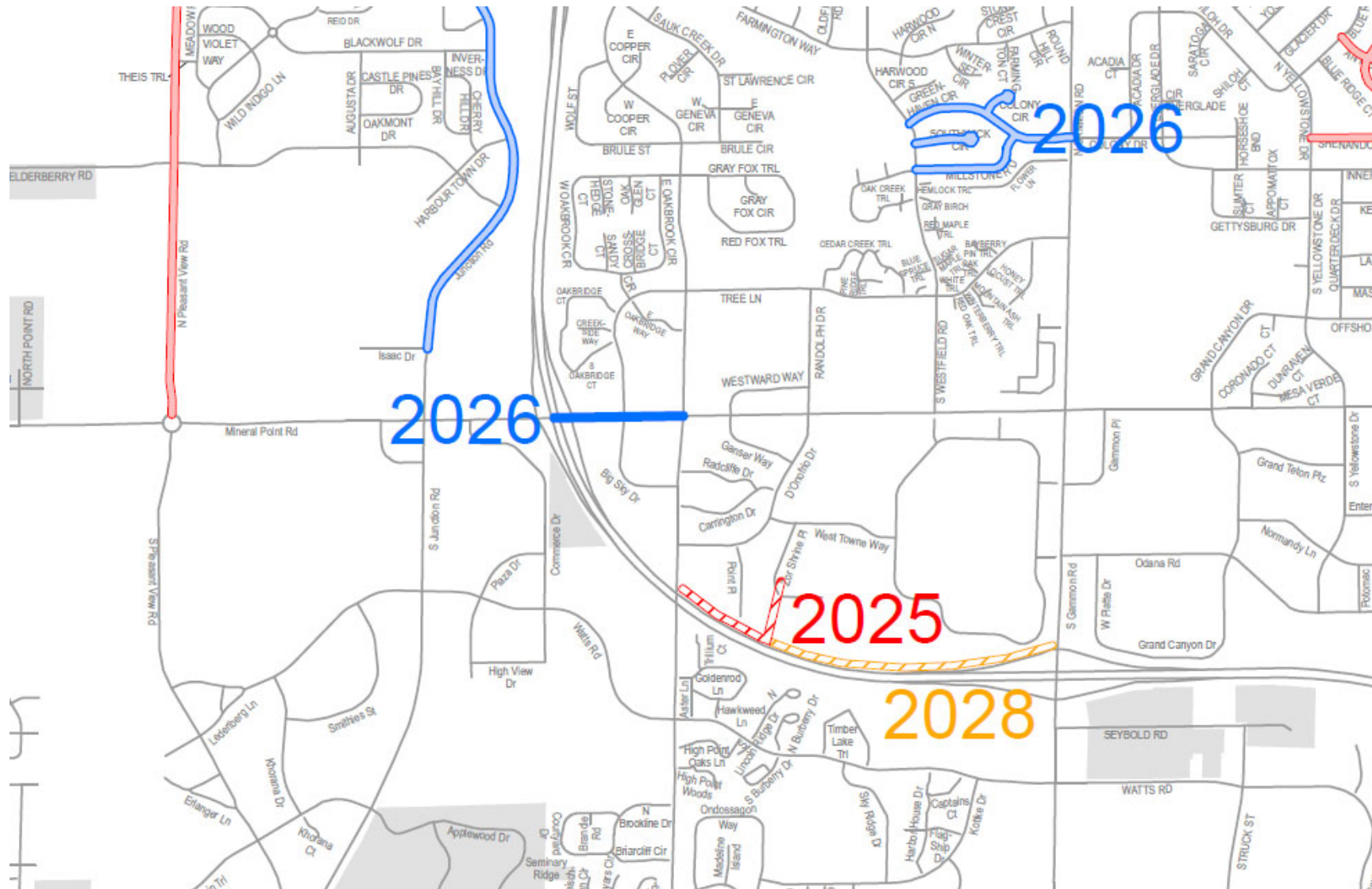
- 2024 – Knutson Bridge Painting
 - Pedestrian Bridge Repairs over Park St
 - Pedestrian Bridge Repairs over Stoughton Road
- 2025 – Epoxy Coating of Bridge Decks - Beld St, Milwaukee St



Badger Rusk Path - TAP



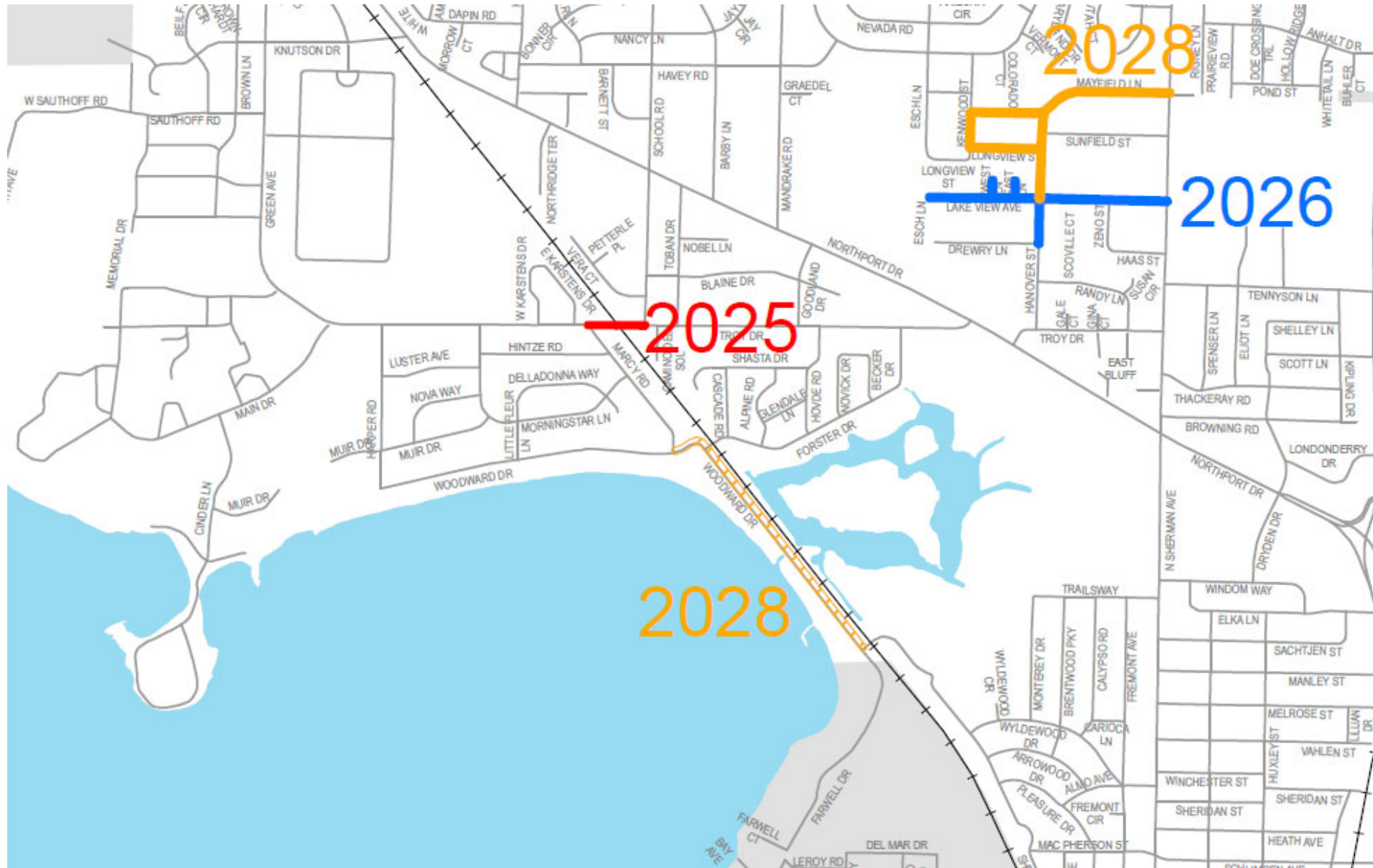
West Towne Path Phase 2 - TAP



CITY OF **MADISON**



Troy Drive Railroad Bridge



Other Projects

- East / West BRT: 2023-2024
- North/South BRT: 2027/2028
- Safe Streets: Yearly, Ongoing



State of our Local Streets

	Local	2001	2015	2017	2018	2019	2020	2021	2022	2023
	% Miles at or below Cond State 10	100.0%	100.0%	100.0%	100.0%	100.0%	100.0%	100.0%	100.0%	100.0%
	% Miles at or below Cond State 9	93.9%	98.1%	96.6%	94.6%	96.1%	97.4%	95.7%	94.8%	96.2%
	% Miles at or below Cond State 8	88.3%	94.9%	94.3%	92.2%	92.9%	93.4%	91.8%	91.3%	91.5%
	% Miles at or below Cond State 7	68.2%	64.1%	61.8%	53.2%	78.5%	62.9%	46.3%	42.6%	40.3%
	% Miles at or below Cond State 6	61.8%	41.8%	45.9%	44.3%	44.3%	41.1%	35.0%	30.6%	29.0%
Goal 30%	% Miles at or below Cond State 5	34.9%	27.6%	27.8%	25.9%	25.7%	23.5%	19.6%	18.7%	17.4%
Goal 15%	% Miles at or below Cond State 4	11.6%	17.5%	18.2%	16.2%	15.4%	14.3%	11.8%	11.4%	11.0%
Goal 0%	% Miles at or below Cond State 3	2.4%	2.7%	3.5%	3.1%	2.9%	2.6%	2.2%	1.6%	2.0%
	% Miles at or below Cond State 2	0.9%	0.1%	0.2%	0.2%	0.1%	0.3%	0.3%	0.0%	0.4%
	% Miles at or below Cond State 1	0.8%	0.0%	0.0%	0.0%	0.0%	0.0%	0.2%	0.0%	0.3%
	% Miles at or below Cond State 0	0.4%	0.0%	0.0%	0.0%	0.0%	0.0%	0.2%	0.0%	0.3%

State of our Collector Streets

	Collector	2001	2015	2017	2018	2019	2020	2021	2022	2023
	% Miles at or below Cond State 10	100.0%	100.0%	100.0%	100.0%	100.0%	100.0%	100.0%	100.0%	100.0%
	% Miles at or below Cond State 9	94.2%	96.4%	96.7%	95.1%	96.1%	97.0%	96.5%	95.8%	95.6%
	% Miles at or below Cond State 8	86.1%	90.8%	93.0%	91.5%	92.8%	95.0%	94.5%	94.3%	94.3%
	% Miles at or below Cond State 7	58.3%	58.8%	61.5%	53.1%	78.0%	64.4%	47.9%	48.6%	43.7%
	% Miles at or below Cond State 6	48.6%	39.0%	44.3%	43.1%	46.5%	43.9%	37.0%	32.2%	32.6%
Goal 25%	% Miles at or below Cond State 5	27.8%	18.9%	23.1%	21.3%	25.0%	22.6%	20.7%	16.9%	15.2%
Goal 10%	% Miles at or below Cond State 4	6.0%	9.1%	10.2%	9.5%	8.4%	8.1%	8.0%	8.1%	6.6%
Goal 0%	% Miles at or below Cond State 3	0.3%	2.9%	3.2%	3.0%	1.8%	1.6%	1.8%	1.4%	1.3%
	% Miles at or below Cond State 2	0.0%	0.0%	0.0%	0.2%	0.2%	0.0%	0.3%	0.0%	0.4%
	% Miles at or below Cond State 1	0.0%	0.0%	0.0%	0.2%	0.2%	0.0%	0.3%	0.0%	0.4%
	% Miles at or below Cond State 0	0.0%	0.0%	0.0%	0.2%	0.2%	0.0%	0.3%	0.0%	0.4%



State of our Arterial Streets

	Arterial	2001	2015	2017	2018	2019	2020	2021	2022	2023
	% Miles at or below Cond State 10	100.0%	100.0%	100.0%	100.0%	100.0%	100.0%	100.0%	100.0%	100.0%
	% Miles at or below Cond State 9	98.3%	98.0%	97.8%	95.1%	95.1%	97.4%	93.8%	93.0%	93.5%
	% Miles at or below Cond State 8	87.0%	89.8%	93.6%	90.7%	92.9%	91.8%	88.2%	88.0%	89.8%
	% Miles at or below Cond State 7	58.4%	56.4%	53.8%	42.5%	78.9%	57.9%	45.2%	51.1%	46.8%
	% Miles at or below Cond State 6	46.3%	37.8%	37.8%	36.5%	40.6%	39.9%	33.9%	32.1%	32.0%
Goal 20%	% Miles at or below Cond State 5	23.3%	18.4%	26.3%	24.6%	25.6%	25.8%	21.2%	21.1%	17.6%
Goal 5%	% Miles at or below Cond State 4	2.0%	7.1%	8.8%	6.9%	8.6%	8.2%	6.0%	6.5%	4.7%
Goal 0%	% Miles at or below Cond State 3	0.5%	2.4%	2.5%	1.6%	1.1%	1.2%	0.6%	0.3%	0.1%
	% Miles at or below Cond State 2	0.5%	0.0%	0.0%	0.0%	0.0%	0.1%	0.0%	0.0%	0.0%
	% Miles at or below Cond State 1	0.5%	0.0%	0.0%	0.0%	0.0%	0.0%	0.0%	0.0%	0.0%
	% Miles at or below Cond State 0	0.5%	0.0%	0.0%	0.0%	0.0%	0.0%	0.0%	0.0%	0.0%

Contact Information & Resources

- Engineering
 - City Engineer, Jim Wolfe, 608-266-4099, jwolfe@cityofmadison.com
 - Assistant City Engineer, Chris Petykowski, 608-267-8678, cpetykowski@cityofmadison.com
- Project Website: cityofmadison.com/engineering/projects/
 - Sign-up for project email updates on the website
 - Updates on closures & work progress will be posted to the project website
 - Recording of Public Information Meetings will be posted on the project website
- Facebook – City of Madison Engineering
- Twitter – @MadisonEngr
- Podcast: Search Everyday Engineering on Apple iTunes, GooglePlay or your podcast provider

