



Grand Rapids, MI

October 2015



Grand Rapids Tour

Madison

- Chuck Kamp, Metro Transit
- Natalie Erdman, PCED
- Brian Grady, Planning
- Mike Cechvala, MPO

The Rapid, Grand Rapids

- Peter Varga, CEO
- Brian Pouget, COO
- Rod Ghearing, Cap. Projects
- Jeff Azzoli, Maint. Mgr
- Michael Bulthuis, Outreach
- Kevin Wisselink, Sr. Planner



Emergency

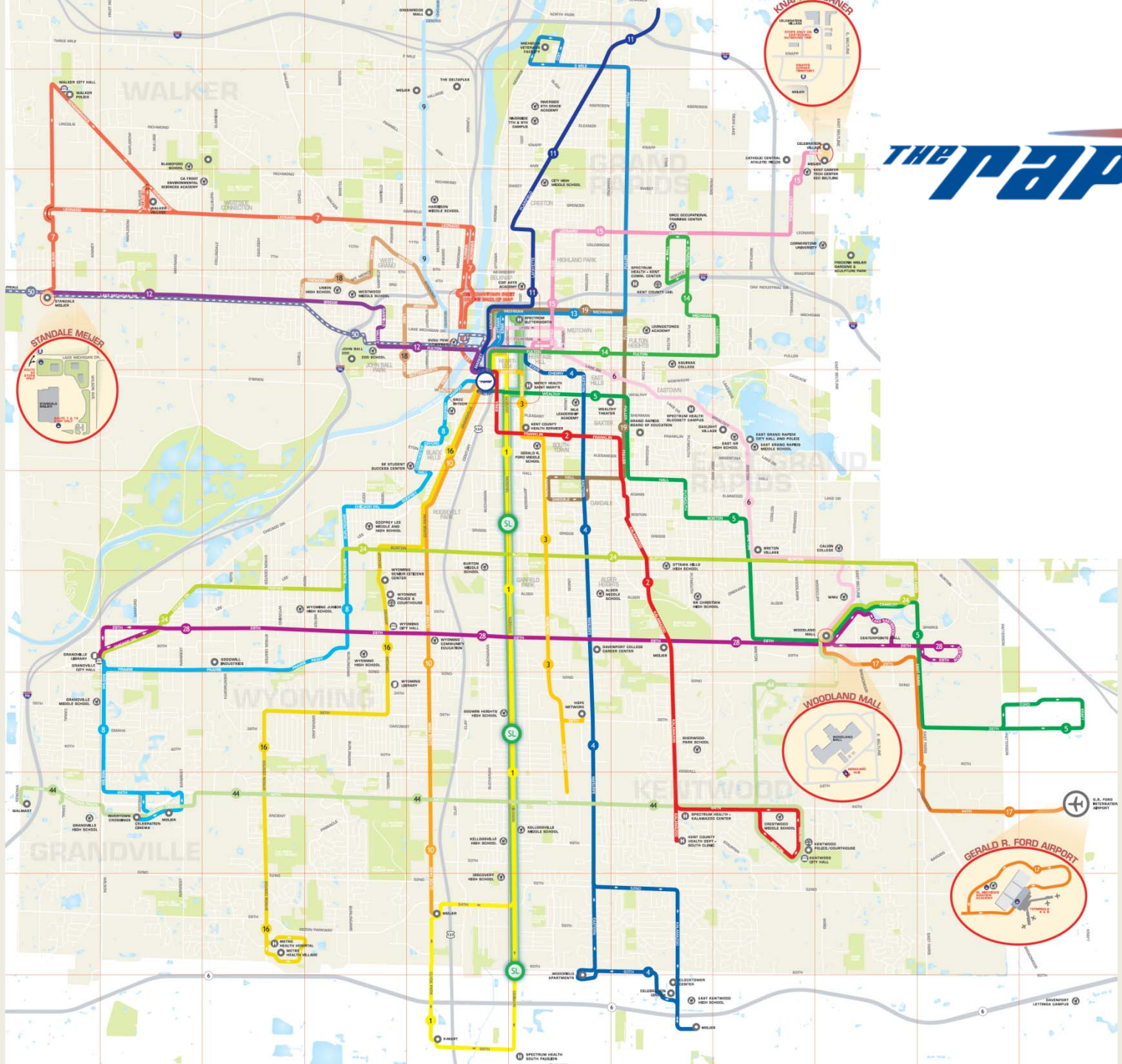
ARRIVE 14 MIN

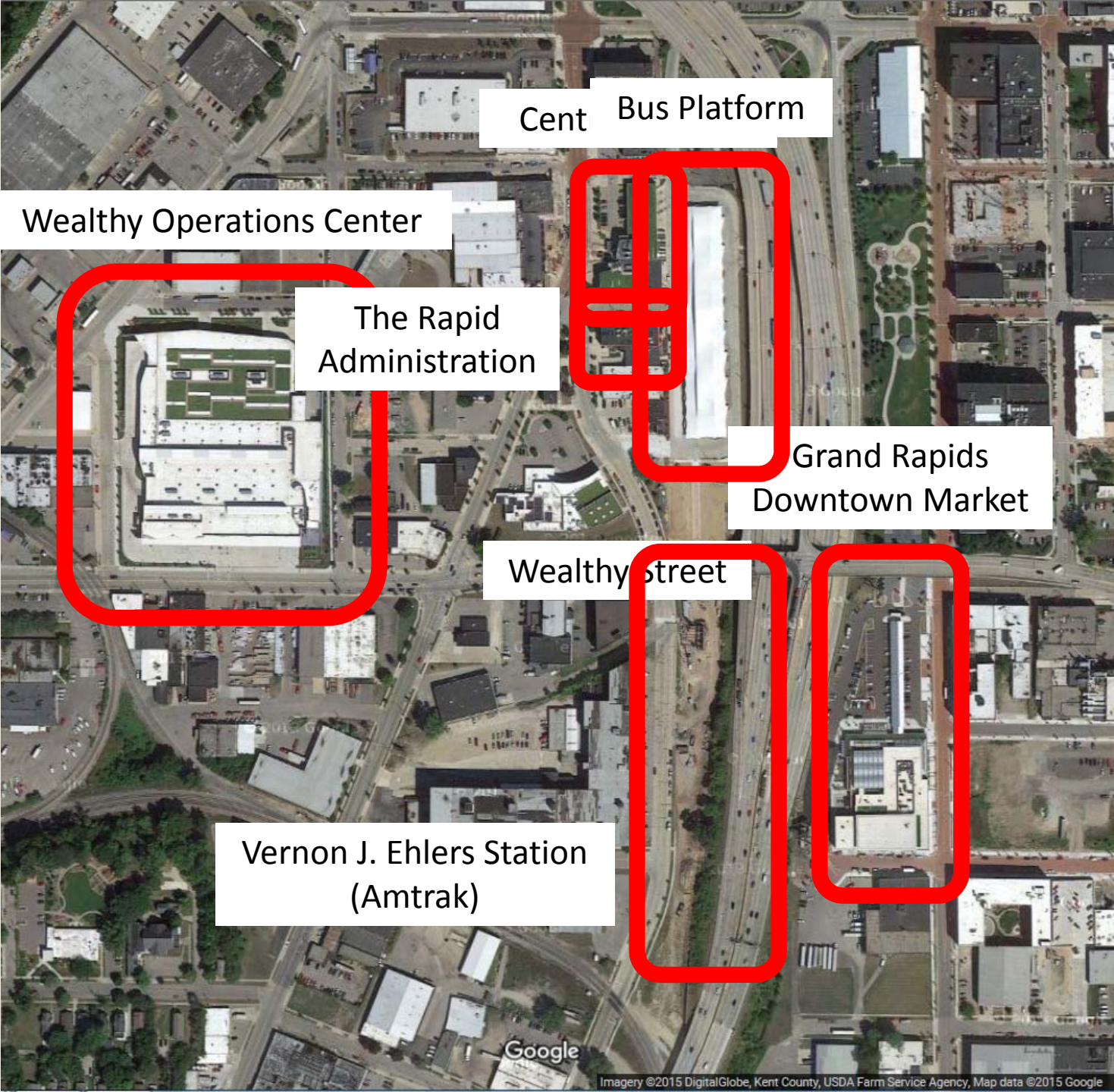
Silver Line

SL SILVER LINE

Silver Line

THE RAPID





Cent Bus Platform

Wealthy Operations Center

The Rapid Administration

Grand Rapids Downtown Market

Wealthy street

Vernon J. Ehlers Station (Amtrak)

Google

Silver Line

- Transit signal priority
- Bus-only lanes
- Off-board fares
- Level boarding
- Limited stops
- 9.6 miles
- 18 stations





- \$40 million capital cost
 - \$32 million Small Starts (FTA)
 - \$8 million State of MI
- Local underlay service (Route 1)
- About 2,200 rides per day on the Silver Line and 2,000 rides per day on Route 1
- Every 10 to 20 minutes, 30 min weekends

2013 Fixed Route Statistics

	The Rapid	Metro Transit
Service Population within ¼ mile	256,000 ^{2,3}	245,000 ^{2,3}
Annual Ridership	12.0 million ¹	14.7 million ¹
Revenue Service Hours	406,000 ¹	391,000 ¹
Rides per Hour	29.6	37.7
Annual Capital Budget	\$16.1 million ^{1*}	\$5 million ⁴
Annual Operating Expenses	\$32.5 million ¹	\$43.0 million ¹
Max Buses in Service	126 ¹	175 ¹
Fare Recovery	18% ¹	29% ¹

* Recent capital projects include a new intermodal bus/rail terminal, bus operations center, and bus rapid transit line.

Sources:

¹ National Transit Database 2013

² 2010 Census

³ GTFS files, Metro Transit and The Rapid

⁴ Metro Transit multi-year average

Wealthy Operations Center



Photo by: [progressive|ae](#)

The Interurban Transit Partnership

- Regional Transit District formed in 2000 consists of six cities
- Funded by a regional property tax
- Millage needs to be periodically reaffirmed by voters
- Millage was increased in 2011 to fund the Silver Line and other improvements





Grand Rapids, MI

October 2015

