

Broadleaf Deciduous
(Refer to Separate Lists for Site Restoration and City Street Trees)

Quantity	Code Name	Common Name	Scientific Name	Planting Size
12	SGH	Swain's Green Highbush	<i>Asa X Froemontii 'Sonn'</i>	1' B&B
15	WBC	Whitewash Gray Birch (dp)	<i>Betula Populifolia 'Whitewash'</i> (dp)	1' B&B
11	ERBT	Eastern Redbud (cf)	<i>Cercis Canadensis</i> (cf)	2' B&B
18	SKH	Street Keeper Honeylocust	<i>Gleditsia Tricane 'draves'</i>	2' B&B
35	QA	Quaking Aspen	<i>Populus Tremuloides</i>	8' B&B
7	SWO	Swamp White Oak	<i>Quercus Bicolor</i>	2' B&B
38	GPO	Green Paper Birch Oak	<i>Quercus Pibernis 'Springer'</i>	2' B&B
11	RFO	Royal Prince English Oak	<i>Quercus Robur 'Long'</i>	2' B&B
8	BLT	Ivory Silk Japanese Lilac (cf)	<i>Syringa Retculata Ivory Silk</i> (cf)	2' B&B

Conifer Evergreen

Quantity	Code Name	Common Name	Scientific Name	Planting Size
16	HPF	Galien-Hop 7/16 Japanese Palm	<i>Chamaecyparis Pal 'Galien-Hop'</i>	#1 CONT.
118	EA	Emerald Arborvitae	<i>Thuja Occidentalis 'Emerald'</i>	#1 B&B
4	EAS	Emerald Arborvitae (sp)	<i>Thuja Occidentalis 'Emerald'</i> (sp)	#10 CONT.
199	WGA	Woodward Globe Arborvitae	<i>Thuja Occidentalis 'woodward'</i>	#5 CONT.

Perennial

Quantity	Code Name	Common Name	Scientific Name	Planting Size
454	KFG	Karl Foerster's Feather Reed Grass	<i>Calamagrostis Aleutica 'Karl Foerster'</i>	#1 CONT.
156	SBOG	Sagehen Blue Oak Grass	<i>Hedysarion Senariense 'sagehen'</i>	#1 CONT.
6	DBH	Olive Bulky Langdon Hosta	<i>Hosta X 'bulky Langdon'</i>	#1 CONT.
108	PMG	Purple Maiden Grass	<i>Panicum Smissum Var 'Purple Princess'</i>	#1 CONT.
52	LSAS	Little Spire Russian Sage	<i>Perovskia Atropurpurea 'Little Spire'</i>	#1 CONT.
84	CAS	Carolina Sage	<i>Salvia Nemoralis 'Carolina'</i>	#1 CONT.
304	TPO	Tara Prairie Dropseed	<i>Spernolobus Heterophyllus 'tara'</i>	#1 CONT.

Shrub

Quantity	Code Name	Common Name	Scientific Name	Planting Size
24	IHD	Ivory Hills Dogwood	<i>Cornus Alba 'bulbalo'</i>	#5 CONT.
26	DBH	Dwarf Bush-Honeysuckle	<i>Doronicum Lonicera</i>	#5 CONT.
48	LHDS	Little Henry Dwarf Sweetspire	<i>Rosa Virginia 'Little Henry'</i>	#1 CONT.
46	TWN	Two Wise Ninesbark	<i>Rhus Aromatica 'Two Wise'</i>	#5 CONT.
35	GLS	Green-Low Fragrant Sumac	<i>Rhus Aromatica 'Green-Low'</i>	#5 CONT.
57	GHS	Gold Hound Spirea	<i>Spiraea Japonica 'Gold Hound'</i>	#5 CONT.
35	BMAY	Black Muffin Arched Viburnum	<i>Viburnum Doratum 'Black Muffin'</i>	#5 CONT.
43	RHW	Red Prince Wigebe	<i>Weigela Fendleri 'Red Prince'</i>	#5 CONT.

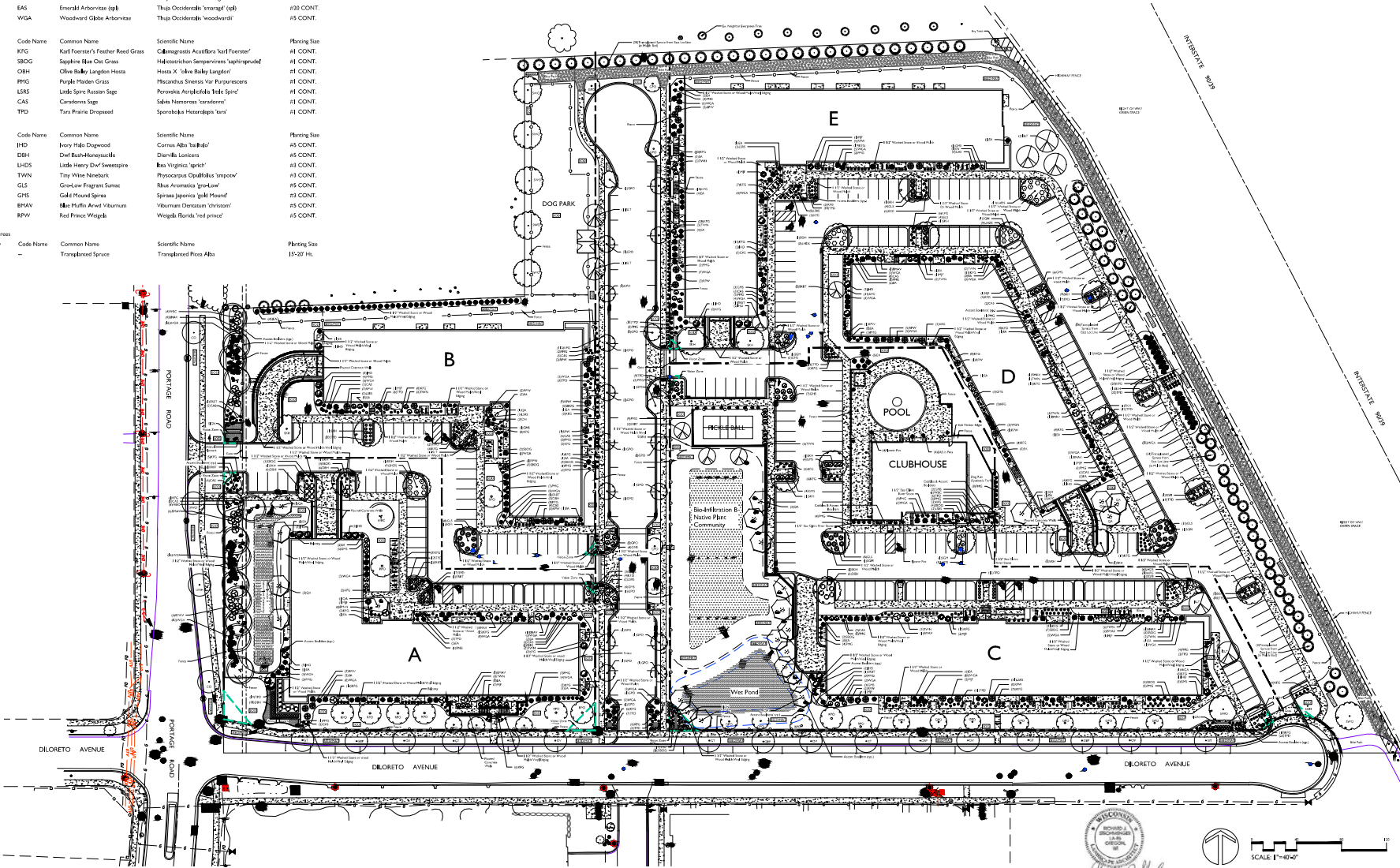
Existing Trees

Quantity	Code Name	Common Name	Scientific Name	Planting Size
71	-	Transplanted Spruce	Transplanted Picea Alba	15'-20' Ht.

City Street Tree Planting List

Broadleaf Deciduous

Quantity	Code Name	Common Name	Scientific Name	Planting Size
2	CO	Common Hackberry	<i>Celtis Occidentalis</i>	2' B&B
5	GBP	Princeton Sentry Ginkgo	<i>Ginkgo Biloba 'Princeton Sentry'</i>	2' B&B
6	SKH	Street Keeper Honeylocust	<i>Gleditsia Tricane 'draves'</i>	2' B&B
5	OV	Amer Hophornbeam	<i>Ostrya Virginiana</i>	2' B&B
1	UNH	Exclamation! London Planetree	<i>Platanus X Acerifolia 'morton Circle'</i>	2' B&B
1	SWO	Swamp White Oak	<i>Quercus Bicolor</i>	2' B&B



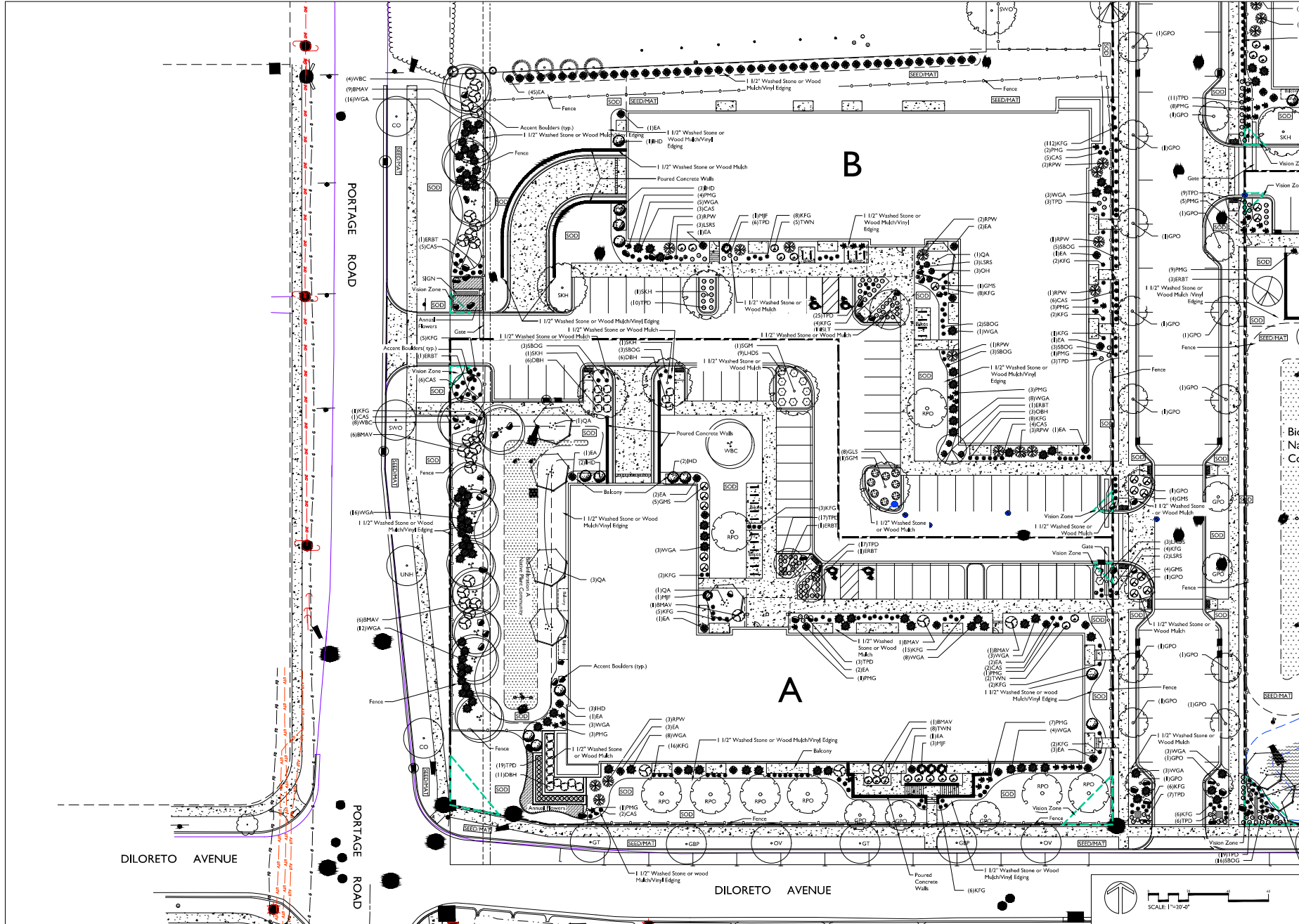
the winston company
LANDSCAPE ARCHITECTS
LANDSCAPE CONTRACTORS
7600 HANOVER STREET
FISHERS, WISCONSIN 53033
TEL: (608) 839-7941
FAX: (608) 831-4256

THE WINSTON
CREKESIDE DRIVE
MADISON, WISCONSIN

Checked By: SS
Drawn By: 8/18/22 RS
Revised: 11/23/22 RS
Revised: 5/10/23 RS
Revised:
Revised:
Revised:
Revised:
Revised:

L1
OVERALL LANDSCAPE
This drawing is a preliminary site plan and is not to be used for construction. It is the property of The Winston Company of Wisconsin, Inc. and is not to be reproduced, copied, or used in any way without the prior written consent of The Winston Company of Wisconsin, Inc.





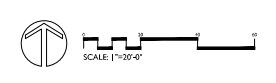
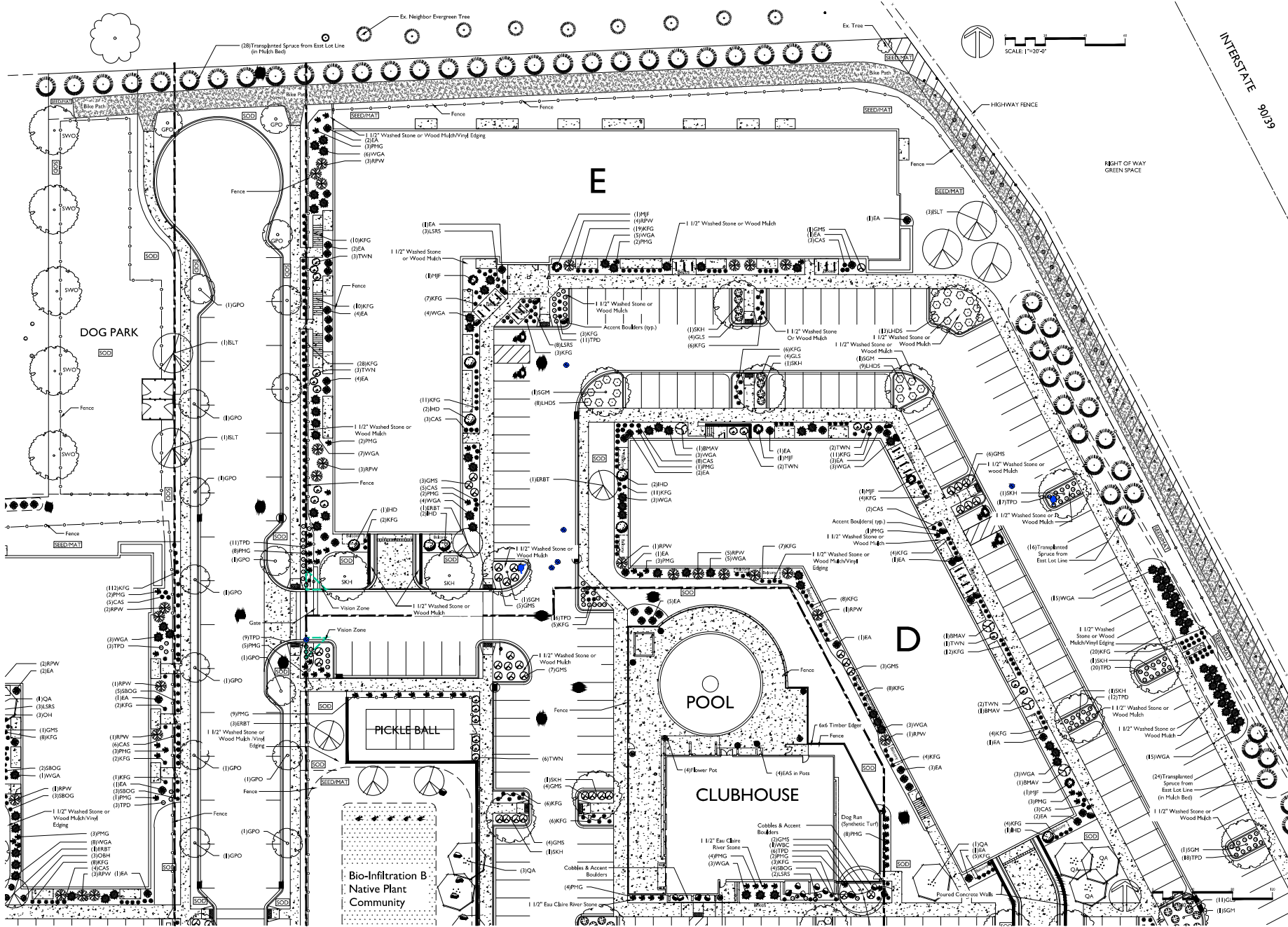
THE WINSTON
CREKESIDE DRIVE
MADISON, WISCONSIN

Checked By: SS
Drawn By: 8/18/22 RS
Revised: 11/23/22 RS
Revised: 5/10/23 RS
Revised:
Revised:
Revised:
Revised:
Revised:

L2
WEST

This document is the property of The Winston Company and is not to be reproduced or used in any way without the prior written consent of The Winston Company. If you are not the intended recipient, please notify the sender via email or phone. Thank you for your attention to this matter.





INTERSTATE 90/39

the
winston
company
LANDSCAPE ARCHITECTS
LANDSCAPE CONTRACTORS
200 PARKVIEW STREET
MILWAUKEE, WI 53204-0010
TEL: (414) 336-9400
FAX: (414) 336-4266

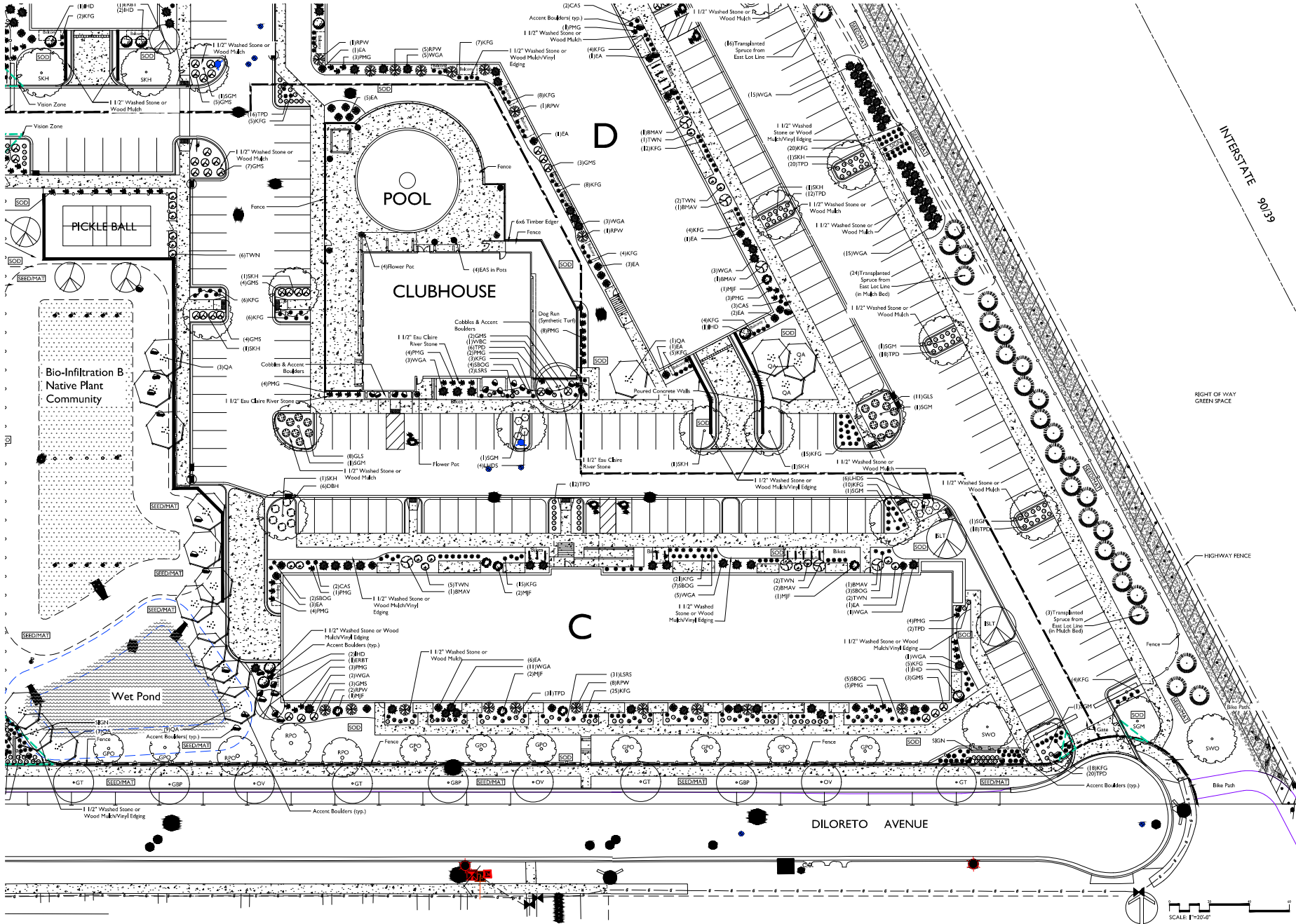
THE WINSTON
CREEKSIDE DRIVE
MADISON, WISCONSIN

Checked by: SS
Drawn by: 8/18/22 RS
Revised: 11/23/22 RS
Revised: 5/10/23 RS
Revised:
Revised:
Revised:
Revised:
Revised:

L3
NORTH

This document is the property of The Winston Company and is not to be used, copied, or reproduced in any form without the prior written consent of The Winston Company.

DATE PLOTTED: 11/23/22 10:00 AM; PLOTTER: HP DesignJet T1100; PLOT SCALE: 1/8\"/>



the
company
LANDSCAPE ARCHITECTS
LANDSCAPE CONTRACTORS
203 PARKVIEW STREET
1425 YORK STREET
MIDDLETON, WI 53562-4030
TEL: (608) 839-9141
FAX: (608) 831-4266

THE WINSTON
CREKESIDE DRIVE
MADISON, WISCONSIN

Checked By: SS
Drawn By: 8/18/22 RS
Revised: 11/23/22 RS
Revised: 5/10/23 RS
Revised:
Revised:
Revised:
Revised:
Revised:

L4
SOUTHEAST
This document is the property of L4 Southeast and is not to be used for any other project without the written consent of L4 Southeast.
© 2023 L4 Southeast



MADISON LANDSCAPE WORKSHEET

Zoning district is SR-V2
 Total square footage of developed area129,890 SF
 Total square footage of first 5 acres of developed area + 300 square feet =433 Landscape Units
 Total square footage of 0 additional acres of developed area + 100 square feet =0 Landscape Units

NUMBER OF LANDSCAPE POINTS REQUIRED
 433 Landscape Units x 5 landscape points for first 5 acres.....2,165 points
 0 Landscape Units x 1 landscape point for additional 0 acres.....0 points
TOTAL LANDSCAPE POINTS REQUIRED.....2,165 points

Plant Material List (Refer to Separate Lists for Bio-Retention and City Street Trees)				
Quantity	Code Name	Common Name	Scientific Name	Planting Size
Broadleaf Deciduous				
12	SGM	Sienna Glen Maple	Acer X Freemanii 'sienna'	3" B&B
15	WBC	Whitespire Gray Birch (dp)	Betula Populifolia 'whitespire' (dp)	10" B&B
11	ERBT	Eastern Redbud (rf)	Cercis Canadensis (rf)	2" B&B
18	SKH	Street Keeper Honeylocust	Gleditsia Triacan 'draves'	3" B&B
25	QA	Quaking Aspen	Populus Tremuloides	8" B&B
7	SWO	Swamp White Oak	Quercus bicolor	3" B&B
38	GPO	Green Pillar Pin Oak	Quercus Palustris 'pringreen'	2" B&B
11	RPO	Regal Prince English Oak	Quercus Robur 'long'	2" B&B
8	ISLT	Ivory Silk Japanese Lilac (rf)	Syringa Reticulata 'Ivory Silk' (rf)	2" B&B
Conifer Evergreen				
16	MJF	Golden Mop Thif Japanese False	Chamaecyparis Pisi 'golden Mop'	#3 CONT.
118	EA	Emerald Arborvitae	Thuja Occidentalis 'smaragd'	5" B&B
4	EAS	Emerald Arborvitae (sp)	Thuja Occidentalis 'smaragd' (sp)	#20 CONT.
199	WGA	Woodward Globe Arborvitae	Thuja Occidentalis 'woodwardii'	#5 CONT.
Perennial				
454	KFG	Karl Foerster's Feather Reed Grass	Calamagrostis Acutiflora 'karl Foerster'	#1 CONT.
56	SBOG	Sapphire Blue Oat Grass	Helictotrichon Sempervivens 'saphirsrudef'	#1 CONT.
6	OBH	Olive Bailey Langdon Hosta	Hosta X 'olive Bailey Langdon'	#1 CONT.
101	PMG	Purple Maiden Grass	Miscanthus Sinensis Var Purpurescens	#1 CONT.
52	LSRS	Little Spire Russian Sage	Perovskia Atropilifolia 'little Spire'	#1 CONT.
84	CAS	Caradonna Sage	Salvia Nemorosa 'caradonna'	#1 CONT.
304	TPD	Tara Prairie Dropseed	Sporobolus Heterolepis 'lara'	#1 CONT.
Shrub				
24	IHD	Ivory Halo Dogwood	Cornus Alba 'bailhalo'	#5 CONT.
26	DBH	Dwf Bush/Honeysuckle	Dicentra Lonicera	#5 CONT.
48	LHDS	Little Henry Dwf Sweetspire	Itea Virginica 'sprich'	#3 CONT.
46	TWN	Tiny Wine Ninebark	Physocarpus Opulifolius 'smptow'	#3 CONT.
35	GLS	Gre-Low Fragrant Sumac	Rhus Aromatica 'gre-Low'	#5 CONT.
57	GMS	Gold Mound Spirea	Spiraea Japonica 'gold Mound'	#3 CONT.
35	BMAV	Blue Muffin Arwd Viburnum	Viburnum Dentatum 'christoni'	#5 CONT.
43	RPW	Red Prince Weigela	Weigela Florida 'red prince'	#5 CONT.
Existing Trees				
Quantity	Code Name	Common Name	Scientific Name	Planting Size
71	--	Transplanted Spruce	Transplanted Picea Alba	15'-20' Ht.

PLANT TYPE or ELEMENT	Point Value	NEW		EXISTING		TOTAL POINTS PROVIDED
		Qty.	Points Achieved	Qty.	Points Achieved	
Overstory Deciduous Tree : 2-1/2" (dbh)	35	126	4,410			
Tall Evergreen Tree : 5-6 feet tall	35			71	2,485	
Ornamental Tree : 1-1/2" Caliper (dbh)	15	19	285			
Upright Evergreen Shrub : 3-4 feet tall	10	118	1,180			
Shrub, deciduous : 3 gallon / 12"-24"	3	314	942			
Shrub, evergreen : 3 gallon / 12"-24"	4	219	876			
Ornamental grass/perennial : 1 gallon / 8"-18"	2	1,057	2,114			
Ornamental / Decorative Fencing	4 per 10 Lf.	4,294	1,718			
Existing significant specimen tree	14 per Cal. In.					
Landscape furniture for public seating and /or transit connections	5 per 'seat'					
Sub Totals		11,428	+	2,485	=	13,913

Street Frontage Landscape Required

Street Frontage = 1,443 LF
 Canopy Trees Required: 1 per 30 LF Frontage = 48
 Shrubs Required : 5 per 30 LF Frontage = 240

Street Frontage Landscape Supplied

Proposed Canopy Trees = 61.5 (58 Shade Trees plus 7 Ornamental/Conifer Count as 3.5)
 Proposed Shrubs = 175 Shrubs and 1,226 LF of Ornamental Fence



GENERAL NOTES

- A) Individual trees (and shrub groupings) found along perimeter of property as well as those found within lawn areas to receive processed wood mulch rings, spread to a minimum 3" depth (2" wide beds for shrub groupings).
- B) "Vinyl Edging" to be Valley View Black Diamond Vinyl Edging or equivalent.
- C) Areas labeled "washed stone OR wood mulch" to receive 1-1/2" washed stone spread to a 3" depth over fabric weed barrier OR processed wood mulch spread to 3" depth with pre-emergent herbicide granules.
- D) "Seed" areas shall be finish-graded and seeded at a rate of 4 lbs. per 1,000 sq. ft.
- E) Seed shall consist of the following mixture:
 10% Palmer IV Perennial Ryegrass
 20% Dragon Kentucky Bluegrass
 20% Dura Kentucky Bluegrass
 20% Fox II Creeping Red Fescue
 15% Val II Perennial Ryegrass
 15% Centur Kentucky Bluegrass
- F) Areas labeled "SeedMat" shall be seeded with the slow-release premium Baum seed mixture and overlaid with D575 straw erosion control netting pegged into the soil with biodegradable staples.
- G) Areas labeled "Soe" shall receive only No. 1 grade nursery-grown bluegrass sod.
- H) Flare beds adjacent to building foundation and parking islands to be mulched with 1-1/2" diameter washed stone mulch spread to a 3" depth over fabric weed barrier OR Processed wood mulch spread to 3" depth with pre-emergent herbicide granules.
- I) Existing street trees shall be protected. Contractor shall install tree protection fencing in the area between the curb and sidewalk and extend it at least 5 feet from both sides of the tree along the length of the terrace. No excavation is permitted within 5 feet of the outside edge of the tree trunk. If excavation within 5 feet of any tree is necessary, contractor shall contact City Forestry (608)266-4816 prior to excavation to assess the impact to the tree and root system. Tree pruning shall be coordinated with City Forestry. Tree protection specifications can be found in section 107.13 of City of Madison Standard specifications for Public Works Construction.
<http://www.cityofmadison.com/business/pw/documents/StdSpecs2013/PwP1.pdf>
- J) Contractor shall contact City Forestry (608)266-4816 at least one week prior to installing street trees to schedule inspecting the nursery stock and reviewing landscaping specifications with the landscaper.

BIO-RETENTION / INFILTRATION DEVICE A PLANT LIST						
Quantity	Common Name	Scientific Name	Planting Size	Planting Size (Total Basin Area = 2,326 SF)	Planting Size (Total Basin Area = 2,326 SF)	Planting Size (Total Basin Area = 2,326 SF)
GRASSES AND SEDGES						
200	WILD RICE	ZIZANIA PALMIFOLIA	2 1/2" POT	17" O.C. Noe. Spacing		
200	ORCHARD GRASS	DACTYLOCTENIUM Aegyptium	2 1/2" POT	17" O.C. Noe. Spacing		
200	ORCHARD GRASS	DACTYLOCTENIUM Aegyptium	2 1/2" POT	17" O.C. Noe. Spacing		
FORBS						
120	NEW ENGLAND ASTER	ASTER NOVIFOLIUS	2 1/2" POT	17" O.C. Noe. Spacing		
120	PURPLE SCHIZOPHYLLON	SCHIZOPHYLLON ALBA	2 1/2" POT	17" O.C. Noe. Spacing		
120	PALE BLUE LILY	HELIOPSIS SCABERIFOLIA	2 1/2" POT	17" O.C. Noe. Spacing		
120	CARAMEL FLOWER	HELIOPSIS SCABERIFOLIA	2 1/2" POT	17" O.C. Noe. Spacing		
120	ORCHARD GRASS	DACTYLOCTENIUM Aegyptium	2 1/2" POT	17" O.C. Noe. Spacing		
120	STREET BLACK-GRASS	DIPOLOPSIS HYPERBOLICA	2 1/2" POT	17" O.C. Noe. Spacing		
120	STREET BLACK-GRASS	DIPOLOPSIS HYPERBOLICA	2 1/2" POT	17" O.C. Noe. Spacing		

BIO-RETENTION / INFILTRATION DEVICE B PLANT LIST						
Quantity	Common Name	Scientific Name	Planting Size	Planting Size (Total Basin Area = 7,900 SF)	Planting Size (Total Basin Area = 7,900 SF)	Planting Size (Total Basin Area = 7,900 SF)
GRASSES AND SEDGES						
120	WILD RICE	ZIZANIA PALMIFOLIA	2 1/2" POT	17" O.C. Noe. Spacing		
120	ORCHARD GRASS	DACTYLOCTENIUM Aegyptium	2 1/2" POT	17" O.C. Noe. Spacing		
120	ORCHARD GRASS	DACTYLOCTENIUM Aegyptium	2 1/2" POT	17" O.C. Noe. Spacing		
FORBS						
480	NEW ENGLAND ASTER	ASTER NOVIFOLIUS	2 1/2" POT	17" O.C. Noe. Spacing		
480	PURPLE SCHIZOPHYLLON	SCHIZOPHYLLON ALBA	2 1/2" POT	17" O.C. Noe. Spacing		
480	PALE BLUE LILY	HELIOPSIS SCABERIFOLIA	2 1/2" POT	17" O.C. Noe. Spacing		
480	CARAMEL FLOWER	HELIOPSIS SCABERIFOLIA	2 1/2" POT	17" O.C. Noe. Spacing		
480	ORCHARD GRASS	DACTYLOCTENIUM Aegyptium	2 1/2" POT	17" O.C. Noe. Spacing		
480	STREET BLACK-GRASS	DIPOLOPSIS HYPERBOLICA	2 1/2" POT	17" O.C. Noe. Spacing		
480	STREET BLACK-GRASS	DIPOLOPSIS HYPERBOLICA	2 1/2" POT	17" O.C. Noe. Spacing		

City Street Tree Planting List

Quantity	Code Name	Common Name	Scientific Name	Planting Size
2	CO	Common Hackberry	Celtis Occidentalis	2" B&B
5	GBP	Princeton Sentry Ginkgo	Ginkgo Biloba 'princeton Sentry'	2" B&B
6	SKH	Street Keeper Honeylocust	Gleditsia Triacan 'draves'	2" B&B
5	OV	Amer Hophornbeam	Ostrya Virginiana	2" B&B
1	UNH	Exclamation! London Planetree	Platanus X Acerifolia 'morton Circle'	2" B&B
1	SWO	Swamp White Oak	Quercus bicolor	2" B&B

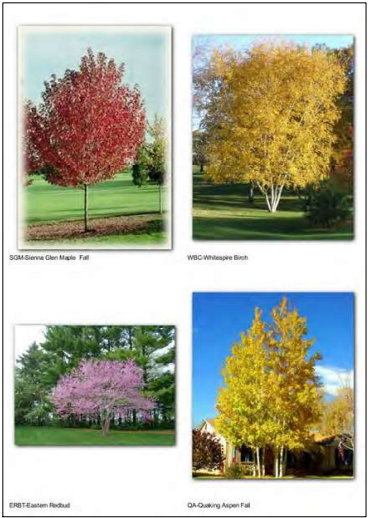
The Common Council of the City of Madison do hereby ordain as follows:
 Subdivision (c) of Subsection (3) entitled "Landscape Plan and Design Standards" of Section 28.142 entitled "Landscaping and Screening Requirements" of the Madison General Ordinances is amended to read as follows:
 (c) Mulch shall consist of shredded bark, chipped wood or stone installed at a minimum depth of two (2) inches. If stone is used, it shall be spread over weed barrier.

THE WINSTON
 CRENSHAW DRIVE
 MADISON, WISCONSIN

Checked By: SS
 Drawn By: 8/18/22 RS

Revised: 11/23/22 RS
 Revised: 5/10/23 RS
 Revised:
 Revised:
 Revised:
 Revised:
 Revised:

L5
 NOTES & SCHEDULES



SOM Sierra Glen Maple (Fall) WBC Whitepine Birch
 ERBT Eastern Redbud QA Quaking Aspen (Fall)



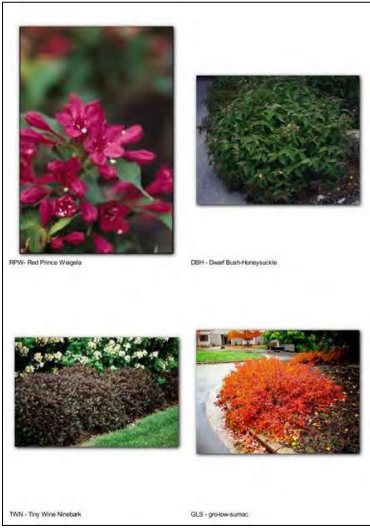
SPO Street Keeper Honeylocust GPO Queen Pillar Pin Oak
 RPO Royal Prince English Oak SWO Swamp White Oak



BLT Ivory Silk Tree Like Tree Fern EA Emerald Arborvitae
 EAS Emerald Arborvitae (opt) M.F. Golden Map Tree Japanese False Cypress



WGA Woodward Globe Arborvitae GMS Gold Mound Spirea
 LHDS Little Henry Dwarf Sweetgum BMS Blue Multi-Arrowood Viburnum



RPY Red Prince Weigela DBH Deer Bush Honeyuckle
 TWN Tiny Wine Newbark GLS - grelow-kumac



BHD Ivory Hiko Dogwood PMS Purple Maiden Grass
 SBOS Sapphire Blue Oat Grass LSRS Little Spire Russian Sage



TPO Tara Prairie Dropseed KFG Karl Foerster's Feather Reed Grass
 CBHChe Bailey Langdon Hosta CAS Caroline Sage

Plant Material List
(Refer to Separate Lists for Site Retention and City Street Trees)

Quantity	Code Name	Common Name	Scientific Name	Planting Size
12	SGH	Sierra Glen Maple	Acer X. Freemanii 'Sierra'	3" B&B
15	WBC	Whitepine Gray Birch (dp)	Betula Populifolia 'whitepine' (dp)	12" B&B
11	ERBT	Eastern Redbud (ff)	Cercis Canadensis (ff)	2" B&B
18	SKH	Serec Keeper Honeylocust	Gleditsia Triaxan 'draves'	3" B&B
25	QA	Quaking Aspen	Populus Tremuloides	8" B&B
7	SWO	Swamp White Oak	Quercus Bicolor	3" B&B
38	GPO	Green Pillar Pin Oak	Quercus Palustris 'Pringsm'	2" B&B
11	RPO	Royal Prince English Oak	Quercus Robur 'Eng'	2" B&B
8	BLT	Ivory Silk Japanese Like (ff)	Syringa Reticulata Ivory Silk' (ff)	2" B&B
Conifer Evergreen				
16	PFJ	Golden Map TM Japanese False	Chamaecyparis Pini 'golden Map'	#3 CONT.
118	EA	Emerald Arborvitae	Thuja Occidentalis 'sargant'	5" B&B
4	EAS	Emerald Arborvitae (opt)	Thuja Occidentalis 'sargant' (opt)	#3 CONT.
199	WGA	Woodward Globe Arborvitae	Thuja Occidentalis 'woodward'	#5 CONT.
Perennial				
454	KFG	Karl Foerster's Feather Reed Grass	Calamagrostis Aleutica 'Karl Foerster'	#1 CONT.
56	SBOS	Sapphire Blue Oat Grass	Helictotrichon sempervirens 'saphiroprdf'	#1 CONT.
6	CBH	Che Bailey Langdon Hosta	Hosta X. 'Ivory Bailey Langdon'	#1 CONT.
181	PMG	Purple Maiden Grass	Helianthus Scaberrimus Var. Purpureascens	#1 CONT.
52	LSRS	Little Spire Russian Sage	Perovskia Atropurpurea 'Little Spire'	#1 CONT.
84	CAS	Caroline Sage	Salvia Nemerosa 'Caradonna'	#1 CONT.
304	TRD	Tara Prairie Dropseed	Sporobolus Heterodactylus 'tara'	#1 CONT.
Shrub				
24	BHD	Ivory Hiko Dogwood	Cornus Alba 'saskia'	#5 CONT.
26	DBH	Deer Bush Honeyuckle	Diervilla Lonicera	#5 CONT.
48	LHDS	Little Henry Dwarf Sweetgum	Thuja Virginica 'springs'	#3 CONT.
46	TWN	Tiny Wine Newbark	Physocarpus Opulifolius 'springer'	#3 CONT.
35	GLS	Grelow Fragrant Sumac	Rhus Aromatica 'grelow'	#5 CONT.
57	GMS	Gold Mound Spirea	Spiraea Japonica 'gold Mound'	#3 CONT.
35	BMAV	Blue Multi-Arrow Viburnum	Viburnum Dentatum 'bristson'	#5 CONT.
43	RPV	Red Prince Weigela	Weigela Florida 'red prince'	#5 CONT.
Existing Trees				
Quantity	Code Name	Common Name	Scientific Name	Planting Size
71	-	Transplanted Spruce	Transplanted Picea Alba	15x20' Ht.

THE WINSTON
 CREEKSIDE DRIVE
 MADISON, WISCONSIN

Checked By: SS
 Drawn By: 8/18/22 RS
 Revised: 11/23/22 RS
 Revised: 5/10/23 RS
 Revised:
 Revised:
 Revised:
 Revised:

L6
 PLANT PICTURES