

Existing State Street Furniture

TF4060 Senora II Concrete Planter



Diameter:	42" dia.
Height:	24"
Weight:	660 lbs.
Material:	Concrete
Shape:	Round
Anchoring:	Includes (4) 1/2" threaded inserts on bottom for optional anchoring.
Reinforcement:	Yes
Optional Reservoir:	Yes
Drain Hole:	2"

[Add To Quote](#)

[Request A Sample](#)

Senora II Series medium sized concrete planter. Includes (2) 5/8" dia. lifting inserts on interior for optional anchoring.

WS313 Concrete Planter with Stainless Steel Fin



Length:	36"
Width:	36"
Height:	18"
Weight:	850 lbs.
Material:	Concrete
Shape:	Square
Anchoring:	Includes (4) 1/2" threaded inserts on bottom for optional anchoring.
Reinforcement:	Yes
Drain Hole:	2

[Add To Quote](#)

[Request A Sample](#)

Concrete planter with stainless steel fin is available in many different colors with customizable options.

Includes (3) 5/8" dia. lifting inserts on interior of planter for lifting. Note: Lifting inserts are ONLY to be used when planter is EMPTY.

Wausau Tile Concrete Colors



TF4190 Form Square Concrete Planter



Length:	30"
Width:	30"
Height:	30"
Weight:	1060 lbs.
Material:	Concrete
Shape:	Square
Anchoring:	Includes (4) 1/2" threaded inserts on bottom for optional anchoring.
Reinforcement:	Yes
Drain Hole:	2"

[Add To Quote](#)

[Request A Sample ↓](#)



Small concrete Form Series square planter great for any location. Form series planters are available in a large variety of sizes in round, square and rectangle to customize your space. Includes (2) 5/8" dia. lifting inserts on interior of planter for lifting. Note: Lifting inserts are ONLY to be used when planter is EMPTY.

WS121 Concrete Planter with Seat



Length:	36"
Width:	18"
Height:	18"
Weight:	680 lbs.
Material:	Concrete
Shape:	Rectangle
Anchoring:	Includes (4) 1/2" threaded inserts on bottom for optional anchoring.
Reinforcement:	Yes
Drain Hole:	2"

[Add To Quote](#)

[Request A Sample ↓](#)

Concrete planter and seat set are available in many different colors with customizable options. Includes (4) 5/8" dia. lifting inserts on interior of planter for lifting. Note: Lifting inserts are ONLY to be used when planter is EMPTY.

WS120 Concrete Planter with Seat



Length:	36"
Width:	18"
Height:	18"
Weight:	715 lbs.
Material:	Concrete
Shape:	Rectangle
Anchoring:	Includes (4) 1/2" threaded inserts on bottom for optional anchoring.
Reinforcement:	Yes
Drain Hole:	(2) 2"

[Add To Quote](#)

[Request A Sample ↓](#)

Concrete planter and seat set are available in many different colors with customizable options. Includes (4) 5/8" dia. lifting inserts on interior of planter for lifting. Note: Lifting inserts are ONLY to be used when planter is EMPTY.

WS117 Concrete Triangle Planter



Length:	36" Triangle
Width:	36" Triangle
Height:	22"
Weight:	750 lbs.
Material:	Concrete
Shape:	Other
Anchoring:	Includes (3) 1/2" threaded inserts on bottom for optional anchoring.
Reinforcement:	Yes
Drain Hole:	2"

[Add To Quote](#)

[Request A Sample ↓](#)

Triangle concrete planter and seat set are available in many different colors with customizable options. Includes (3) 5/8" dia. lifting inserts on interior of planter for lifting. Note: Lifting inserts are ONLY to be used when planter is EMPTY.

WS116 Concrete Triangle Seat



Length:	36" Triangle
Width:	36" Triangle
Height:	22"
Weight:	1,100 lbs.
Material:	Concrete
Shape:	Other
Anchoring:	Includes (3) 1/2" threaded inserts on bottom for optional anchoring.
Reinforcement:	Yes
Drain Hole:	2"

[Add To Quote](#)

[Request A Sample ↓](#)

Triangle concrete planter and seat set are available in many different colors with customizable options.

TF5113 Concrete Bench



Length:	72"
Width:	18"
Height:	18"
Weight:	950 lbs.
Material:	Concrete
Shape:	Rectangle
Anchoring:	Includes (4) 1/2" threaded inserts on bottom for anchoring.
Reinforcement:	Yes

[Add To Quote](#)

[Request A Sample ↓](#)

6' concrete bench that is part of a family of similar style benches. Ground & Polished top available for an extra charge.

TF5207 Concrete Bench

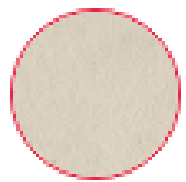


Length:	37"
Width:	17"
Height:	18"
Weight:	700 lbs.
Material:	Concrete
Shape:	Rectangle
Anchoring:	Includes (4) 3/8" threaded inserts on bottom for anchoring.
Reinforcement:	Yes

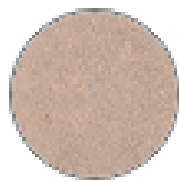
[Add To Quote](#)

[Request A Sample ↓](#)

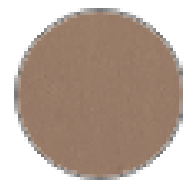
Rectangular concrete bench. Ground & Polished top or Premium Acid Wash Finish available for an extra charge.



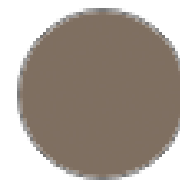
S20 White



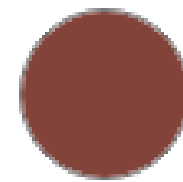
S21 Buff



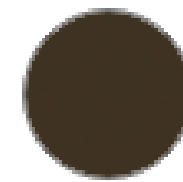
S22 Sand



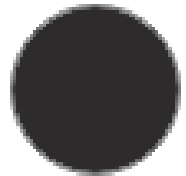
S23 Gray



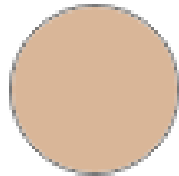
S24 Brick Red



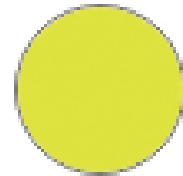
S25 Brown



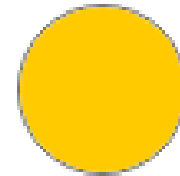
S26 Charcoal



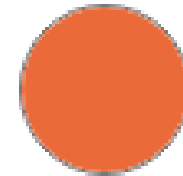
STK-11 Cream



STK-71 Softball
Yellow



STK-54 Sunburst
Yellow



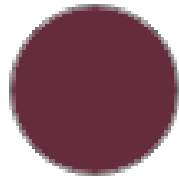
STK-41 Orange



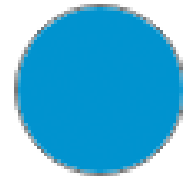
SM2900 Red



STK-72 Dark Red



STK-58 Plum



STK-26 Light Blue



STK-117 Blue



STK-25 Dark Blue



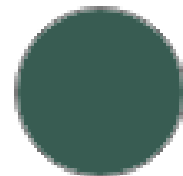
STK-24 Purple



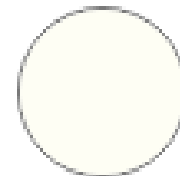
STK-44 Light Green



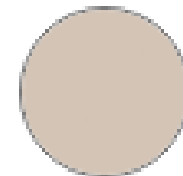
STK-38 Green



STK-5 Dark Green



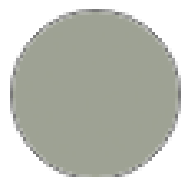
S30 Star



S31 Fog



S32 Limestone



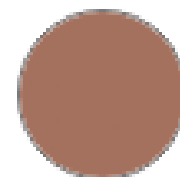
S33 Misty Gray



S34 Leaf



S35 Rust



S36 Leather



S37 Iron



S38 Night

TF5010 Eclipse Concrete Bench

[See the Eclipse Collection](#)



Length:	72"
Width:	18"
Height:	20"
Weight:	1950 lbs.
Material:	Concrete
Shape:	Rectangle
Anchoring:	Includes (4) 1/2" threaded inserts on bottom for anchoring.
Reinforcement:	Yes

[Add To Quote](#)

[Request A Sample ↓](#)

Eclipse concrete bench coordinate with Eclipse family products.

ZB.CI.4000 Large Concrete Circular Bench

[See the Circular Collection](#)



Length:	78 13/16"
Width:	20 1/2"
Height:	18"
Weight:	2058 lbs.
Material:	Concrete
Shape:	Oval
Anchoring:	Hidden Anchoring
Reinforcement:	Yes

[Add To Quote](#)

[Request A Sample ↓](#)

Combine this concrete bench with the rest of the Circular collection pieces to create a large circle around trees and plants or as single benches in any location.

ZB.RO.03 Concrete Bench

[See the Roma Collection](#)



Length:	72"
Width:	24"
Height:	20"
Weight:	1032 lbs.
Material:	Concrete
Shape:	Oval
Anchoring:	Hidden Anchoring
Reinforcement:	Yes

[Add To Quote](#)

[Request A Sample ↓](#)

Roma concrete bench features a see-through design that coordinates with bollards from this collection.



ZB.WL.10 Large Bench With Two Double Seats

[See the Woodline Collection](#)



Length:	96"
Width:	20"
Height:	20"
Weight:	2634 lbs.
Material:	Concrete Wood
Shape:	Rectangle
Anchoring:	Hidden Anchoring

[Add To Quote](#)

[Request A Sample ↓](#)

Concrete bench with two double seat sections looks good by itself or pair it with other Woodline collection products with endless combinations.

DF5360 Collaboration Slant Bench

[See the Collaboration Collection](#)



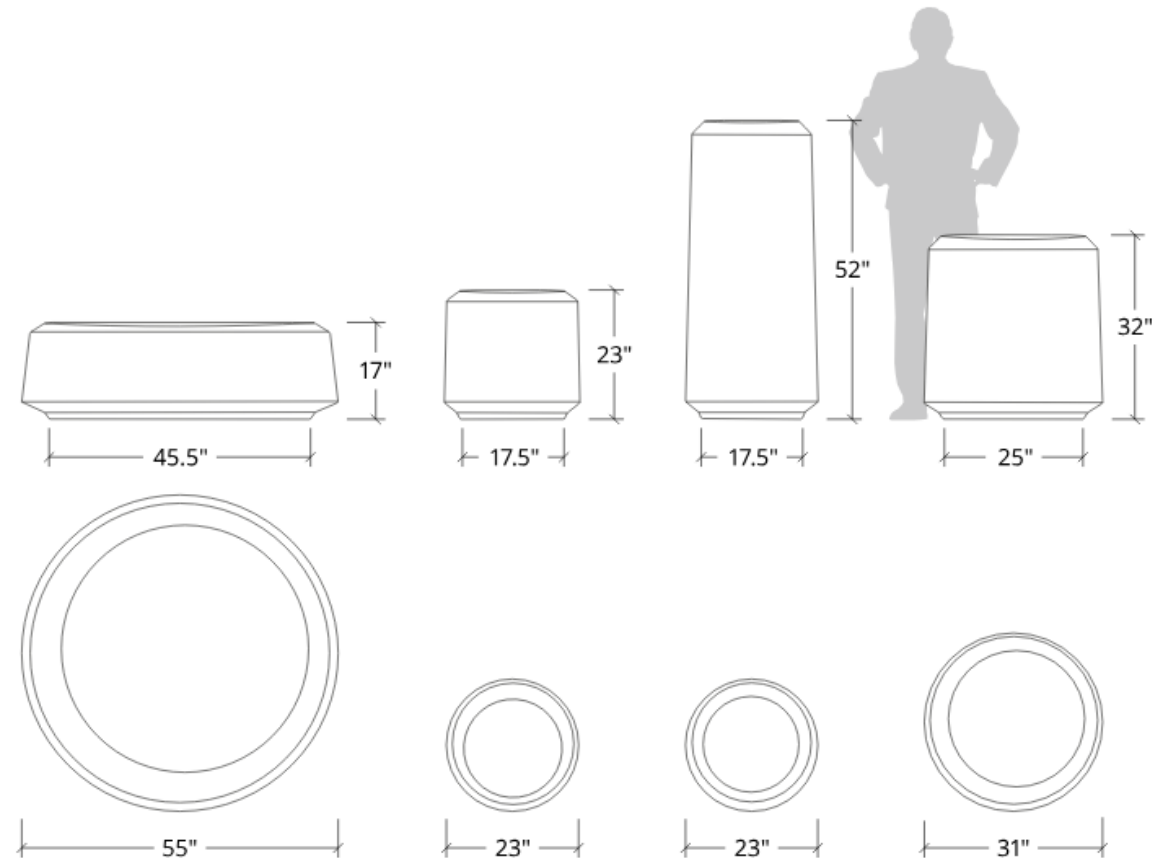
Length:	79 1/4"
Width:	18"
Height:	18"
Weight:	1300 lbs.
Material:	Concrete Wood
Shape:	Rectangle
Reinforcement:	Yes

[Add To Quote](#)

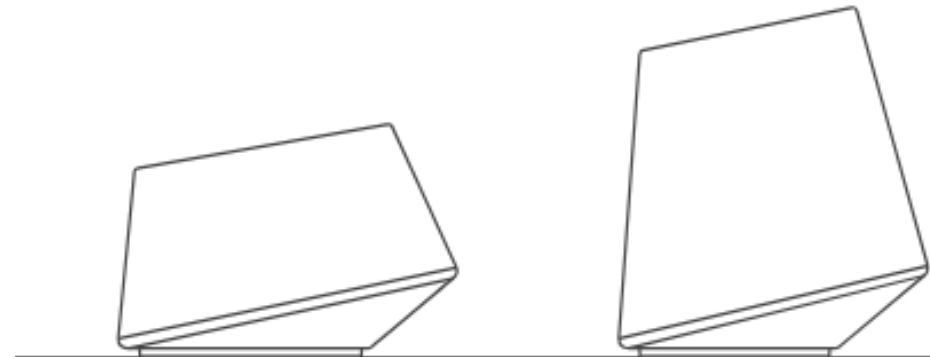
[Request A Sample ↓](#)

Slanted concrete bench with wood top. Choose the colors of both the seat and the base.

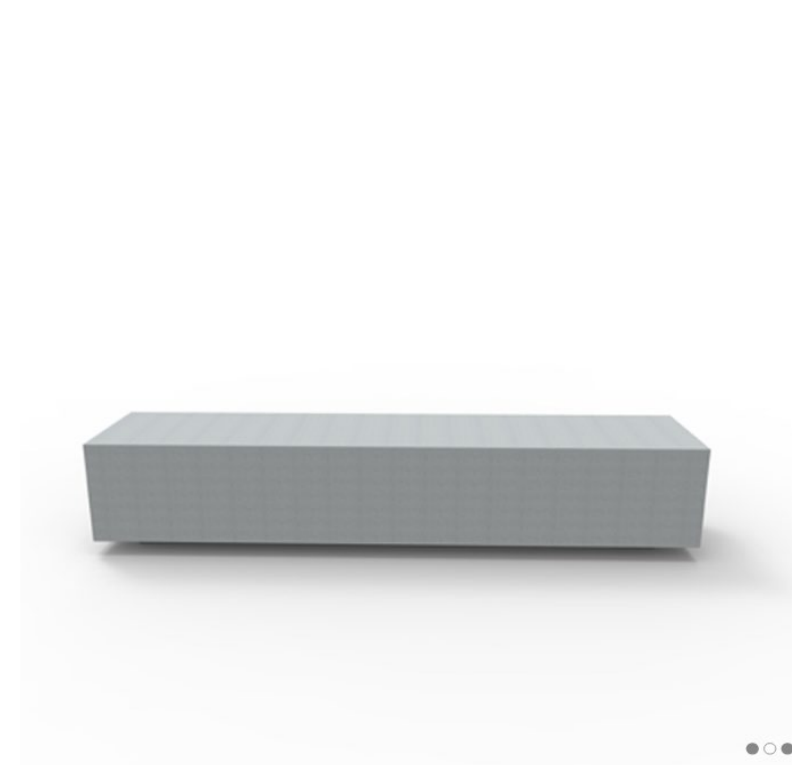
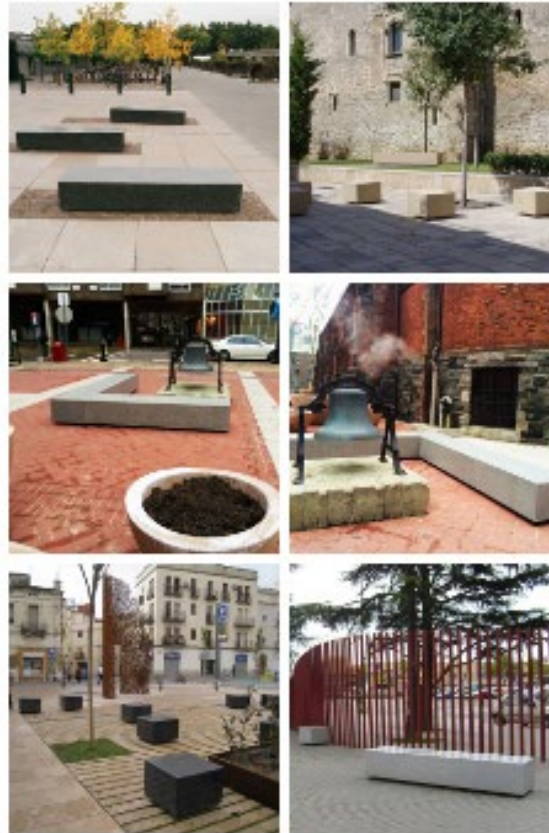
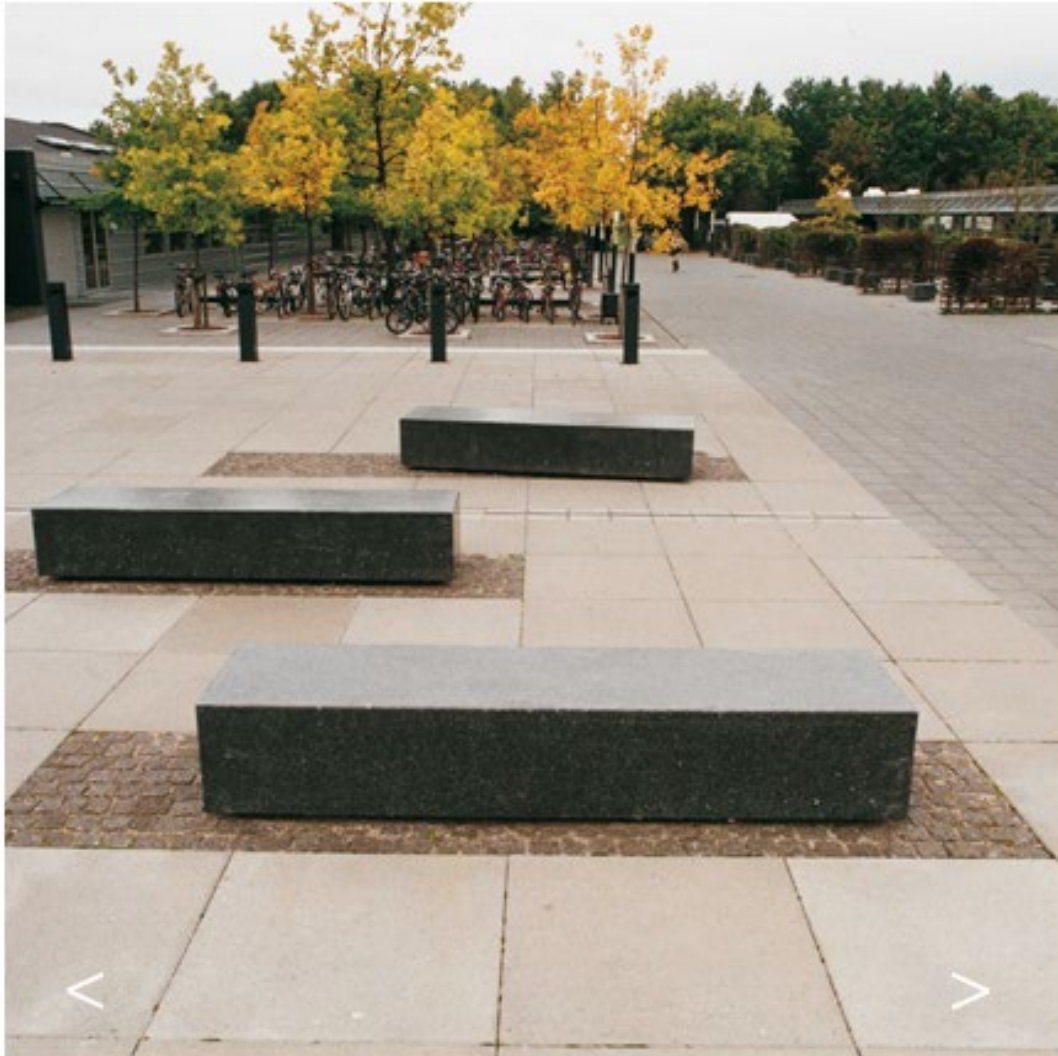
Landscape Forms – Offset Series



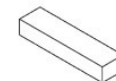
Landscape Forms – Paseos Series



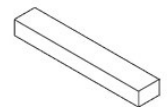
Landscape Forms - Socrates



24" bench
24" x 24" x 18"



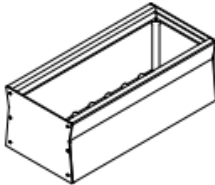
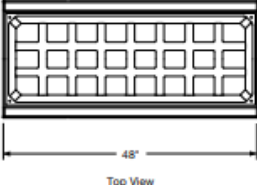

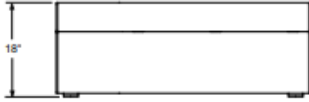

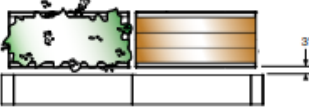
95" bench
24" x 95" x 18"



142" bench
24" x 142" x 18"

Landscape Forms - Gus



Dimension	
18" Freestanding	
	 <p>48" Top View</p>
 <p>22" Side View</p>	 <p>18" Front View</p>
	<p>Planter Spacing from Guard Rail Minimum spacing for planter from outside of guard rail with plants or seating infill is 3 inches from rail top on outside of rail. This spacing is optimum for shrubs and seating when guard rail back rest is being paired with the planter with seating infill.</p>
 <p>3"</p>	
Planter shown open and with wood seat panel inserts	
