



Madison, Wisconsin

CITY OF MADISON

CITY ENGINEERING DIVISION

DEPARTMENT OF PUBLIC WORKS

PLAN OF PROPOSED IMPROVEMENT

WEST WASHINGTON AVENUE AND HENRY STREET

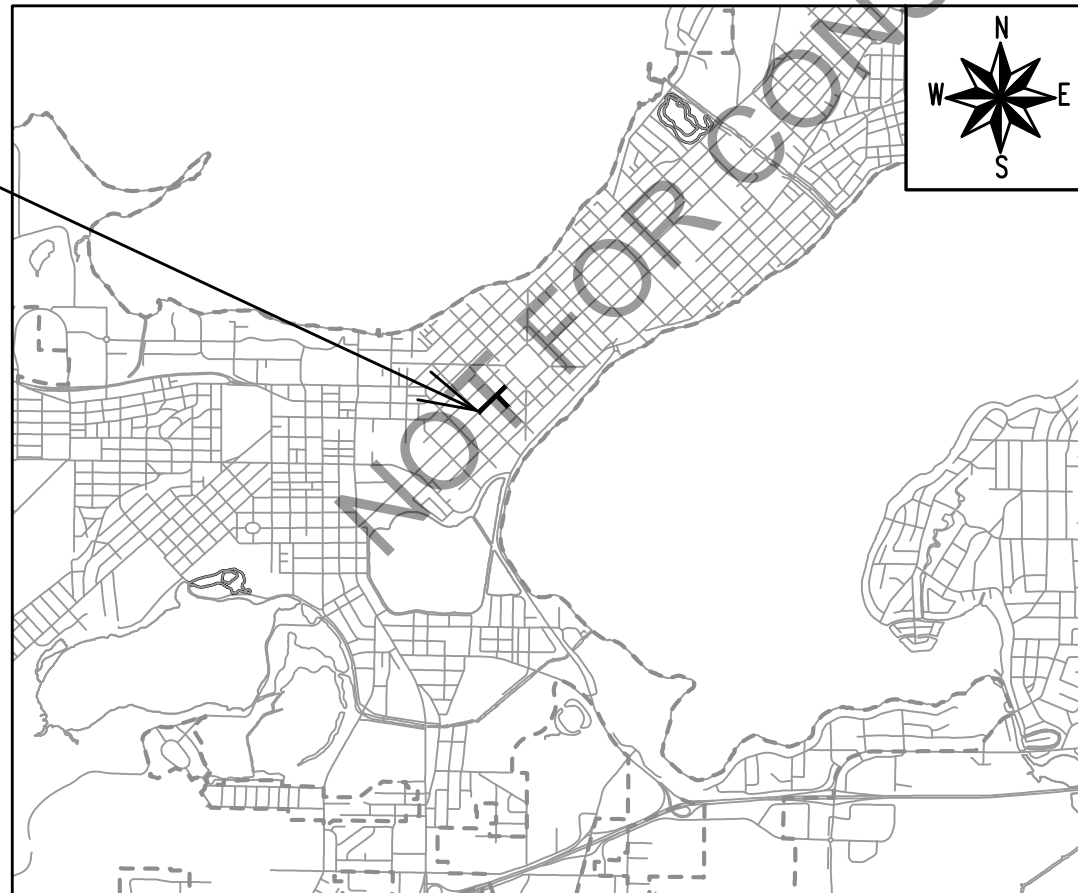
RESURFACING

INDEX OF SHEETS

SHEET NO. D1-D#	NOTES AND DETAILS
SHEET NO. P1-P#	STREET PLAN & PROFILES
SHEET NO. U1-U#	UTILITY PLAN & PROFILES
SHEET NO. USAN	SANITARY SEWER SCHEDULE
SHEET NO. USTM	STORM SEWER SCHEDULE
SHEET NO. W1-W#	WATER PLANS
SHEET NO. X1-X#	CROSS SECTIONS

CITY PROJECT NO. 14389
CONTRACT NO. 8746

PROJECT
LOCATION



PUBLIC IMPROVEMENT PROJECT
APPROVED

APPROVED DATE

BY THE COMMON COUNCIL
OF MADISON, WISCONSIN

PUBLIC IMPROVEMENT DESIGN
APPROVED BY:

City Engineer

Date

STREET
DESIGNED BY:

PAVEMENT MARKINGS
DESIGNED BY:

STORM SEWER
DESIGNED BY:

WATER
DESIGNED BY:

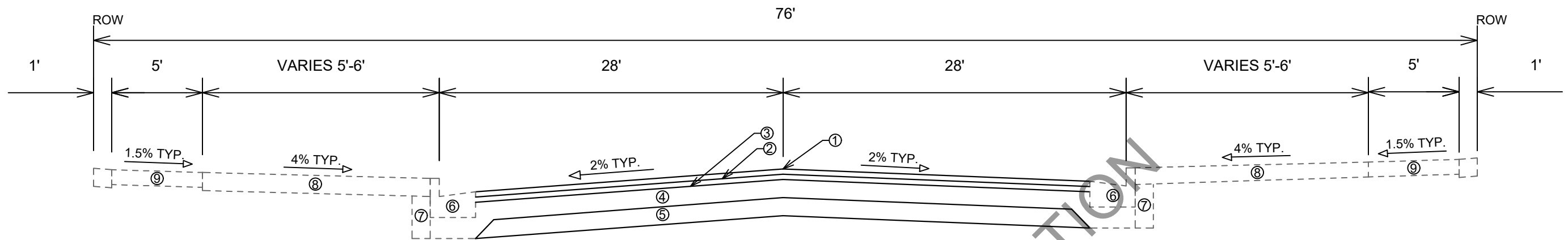
SANITARY SEWER
DESIGNED BY:

PLOT SCALE: 1"=0' = 1"=0' .XREF

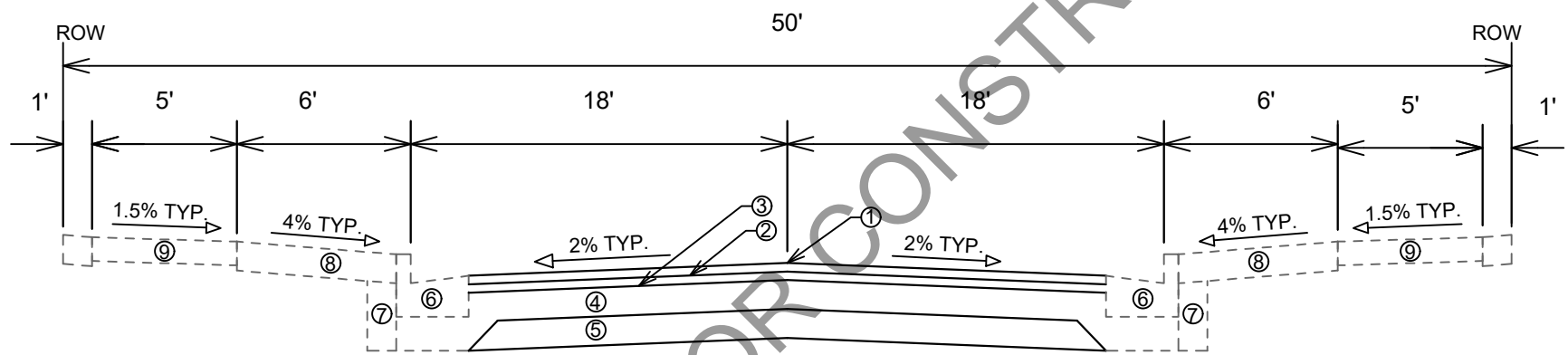
PLOT NAME: ---

REV. DATE: 2/6/2024 12:05 PM

ORIGINATOR: CITY_OF_MADISON



TYPICAL SECTION
WEST WASHINGTON AVENUE



TYPICAL SECTION
HENRY STREET

SPECIAL NOTES:

- TYPICAL SECTION NOT TO SCALE
- SEE X-SHEETS FOR CROSS SLOPES, EDGE OF PAVEMENT ELEVATIONS, & TOP OF CURB ELEVATIONS

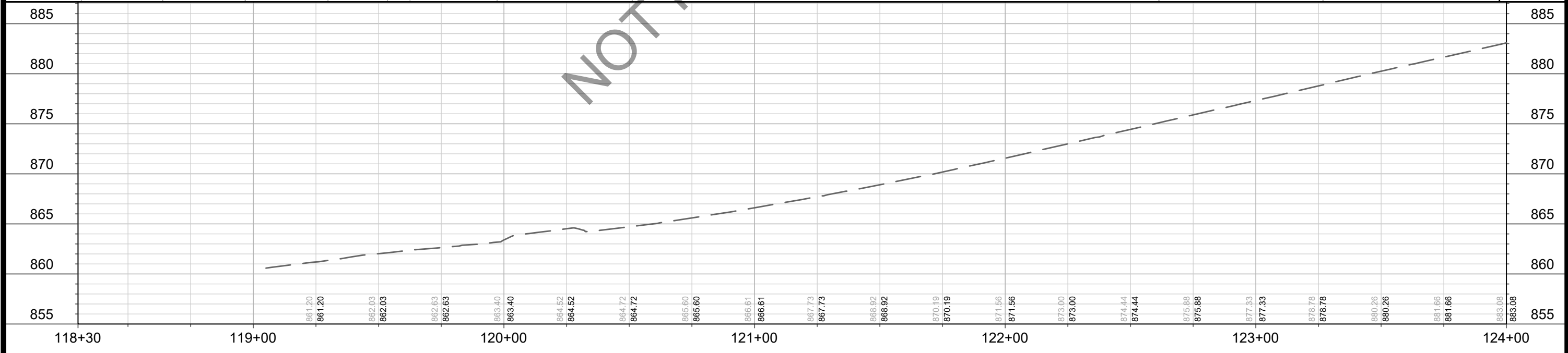
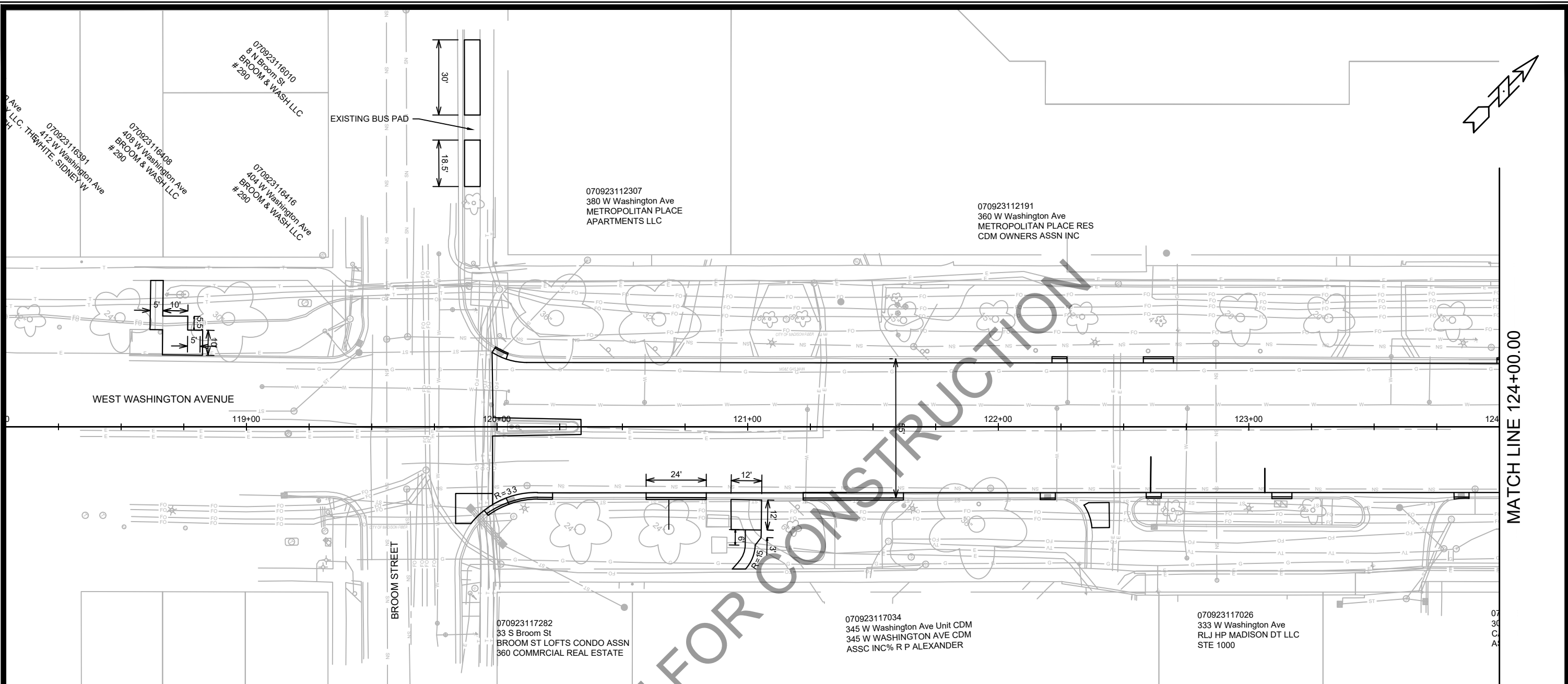
- ① POINT REFERRED TO ON PROFILE
- ② 1.75" HMA PAVEMENT, TYPE 4 LT 58-28 S (UPPER LAYER)
- ③ 1.75" HMA PAVEMENT, TYPE 4 LT 58-28 S (LOWER LAYER)
- ④ 6" GRADATION 2 CRUSHED AGGREGATE BASE COURSE (UPPER LAYER)
- ⑤ 6" GRADATION 1 CRUSHED AGGREGATE BASE COURSE (LOWER LAYER)
- ⑥ CONCRETE CURB AND GUTTER TYPE 'A'; 42-INCH MODIFIED TYPE 'A', MODIFIED TYPE 'A REJECT; DRIVEWAY (DWY) TYPE 'X'; PEDESTRIAN (PED) TYPE 'X'
- ⑦ FILL INCIDENTAL TO CURB AND GUTTER INSTALLATION
- ⑧ RESTORE DISTURBED AREAS W/ 6" TOPSOIL, SEED, AND EROSION MATTING
- ⑨ 5" CONCRETE SIDEWALK SPOT REPLACEMENT AS NEEDED, SEE PLAN AND PROFILE SHEETS FOR LOCATIONS



DATE	BY
REVISION	
Designed By: MFG	Date: 2/13/2024 1:02 PM
Scale: 1:6	
14389	D-1

14389
MADISON, WI
WEST WASHINGTON AVENUE AND HENRY STREET RESURFACING
CONTRACT NO: 8746
M:\DESIGN\Projects\14389\CAD\Streets\14389EN-Details.dwg





NOT FOR CONSTRUCTION

DATE	BY
REVISION	
Designed By: MFG	Date: 2/13/2024 1:02 PM
Scale: 1" = 40'	
14389	P-1

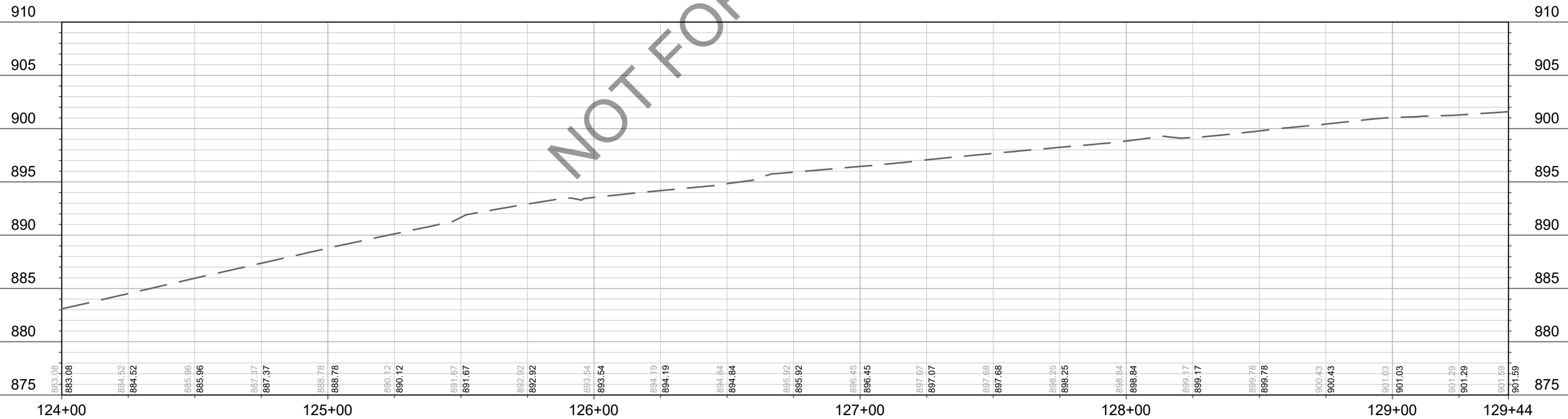
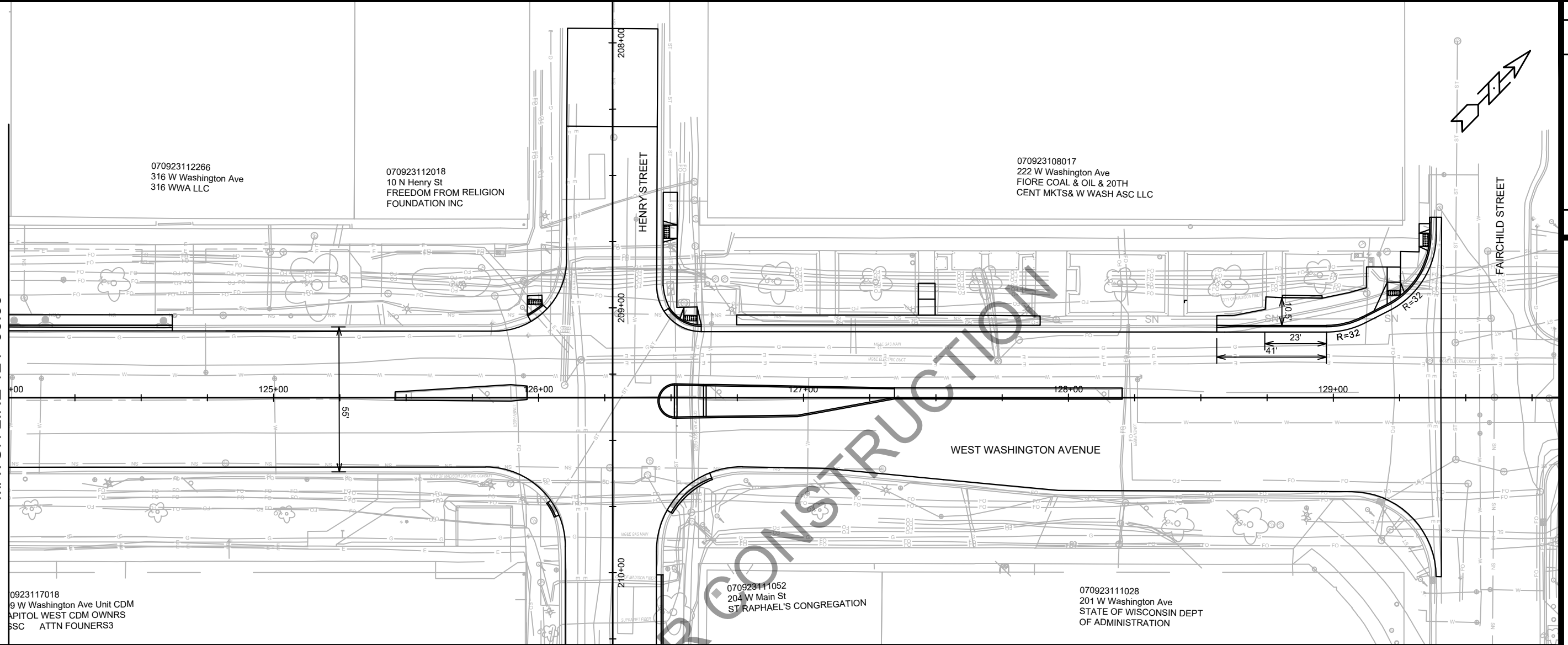
14389
MADISON, WI
WEST WASHINGTON AVENUE AND HENRY STREET RESURFACING
CONTRACT NO: 8746



14389
P-1

M:\DESIGN\Projects\14389\CAD\Streets\14389EN-PnP.dwg

MATCH LINE 124+00.00



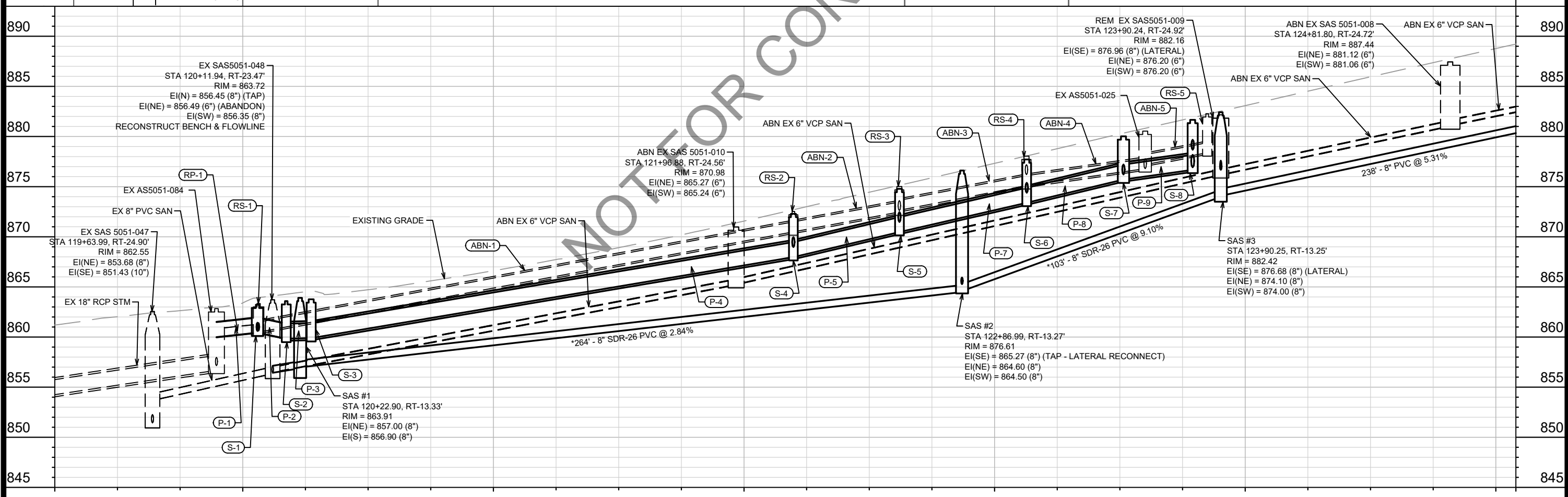
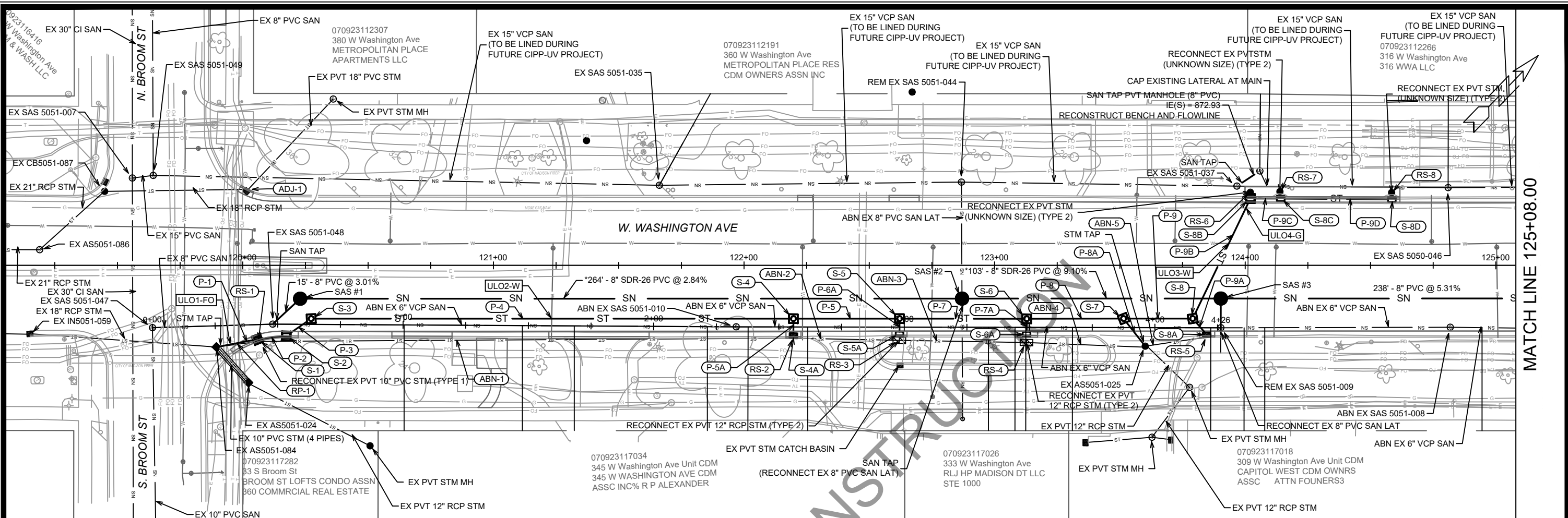
DATE	BY
REV/ISION	DATE
MARK	DATE
Designed By: MFG	Date: 2/13/2024 1:02 PM
14389	Scale: 1" = 40'
P-2	

14389
MADISON, WI
CONTRACT NO.: 8746
PLAN & PROFILE WEST WASHINGTON AVENUE
WEST WASHINGTON AVENUE AND HENRY STREET RESURFACING



14389
P-2

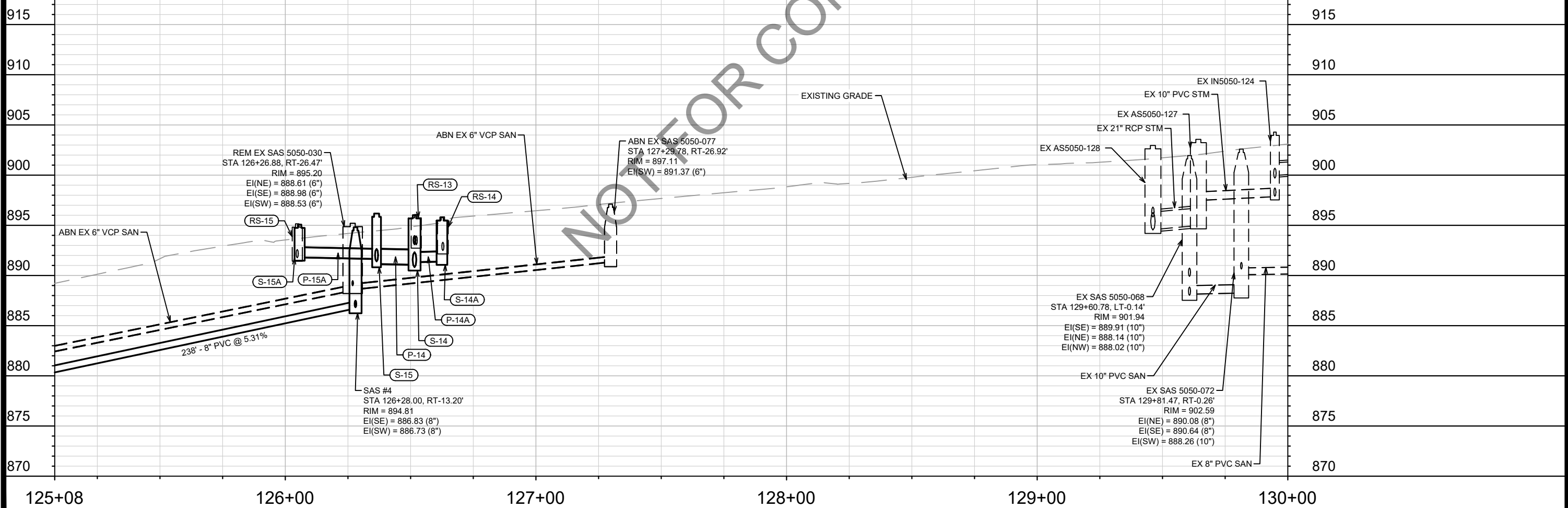
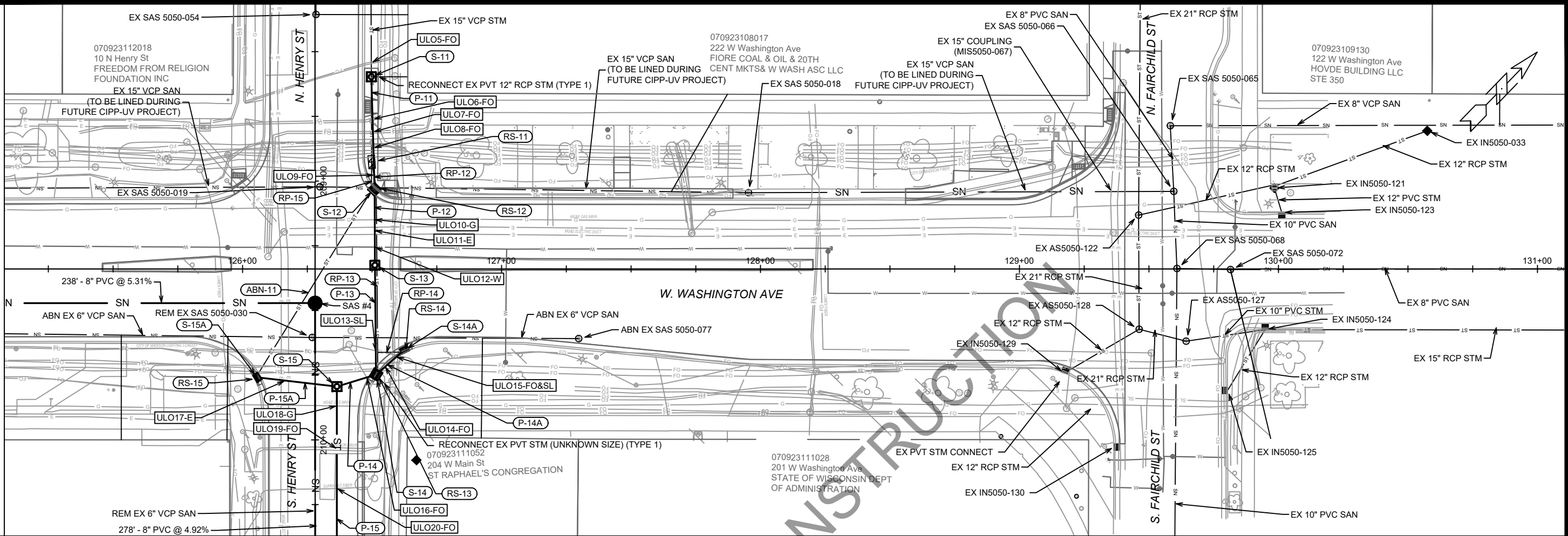
M:\DESIGN\Projects\14389\CAD\Streets\14389EN-PnP.dwg



MATCH LINE 125+08.00

DATE	BY	REVISION	SCALE	U-1
10/23/16	JW	14389	1" = 40'	U-1
DESIGNED BY	DATE	10/35 AM	14389	U-1
MARK	14389	8746	CONTRACT NO.	U-1
<p>14389 MADISON, WI 8746</p> <p>SEWER PLAN AND PROFILE - W. WASHINGTON AVE (SOUTH SIDE)</p> <p>W. WASHINGTON AVENUE & HENRY STREET RESURFACING</p> <p>M:\DESIGN\Projects\14389\CAD\Drawings\14389SWR-PipeNetwork.dwg</p>				
<p>14389</p> <p>U-1</p>				

MATCH LINE 125+08.00

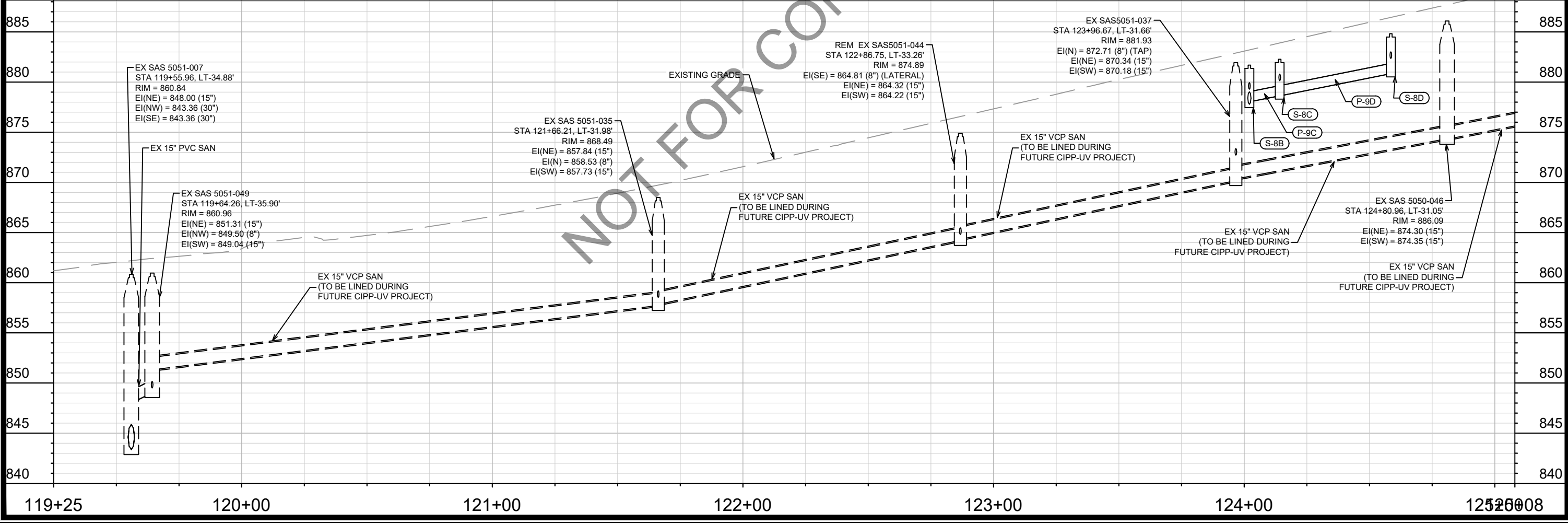
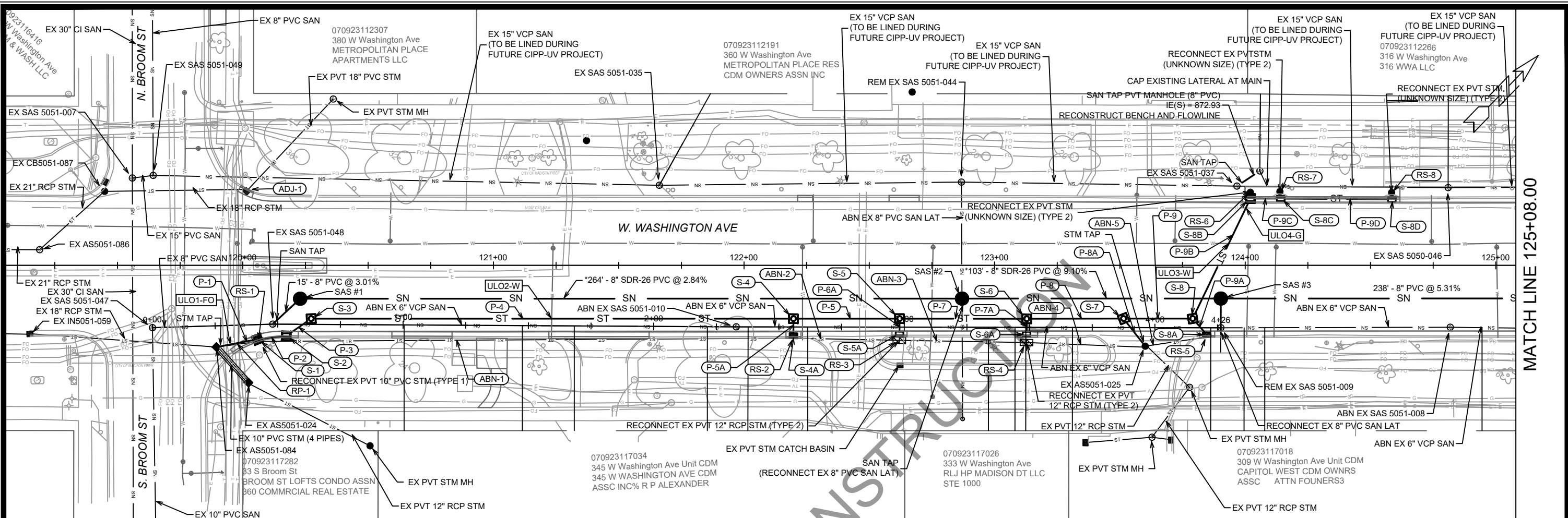


DATE	BY
REVISION	DATE
MARK	DATE
DESIGNED BY: EAC	DATE: 2/26/2024 10:35 AM
14389	Scale: 1" = 40'
U-2	

14389
 MADISON, WI
 WASHINGTON AVENUE & HENRY STREET RESURFACING
 CONTRACT NO: 8476

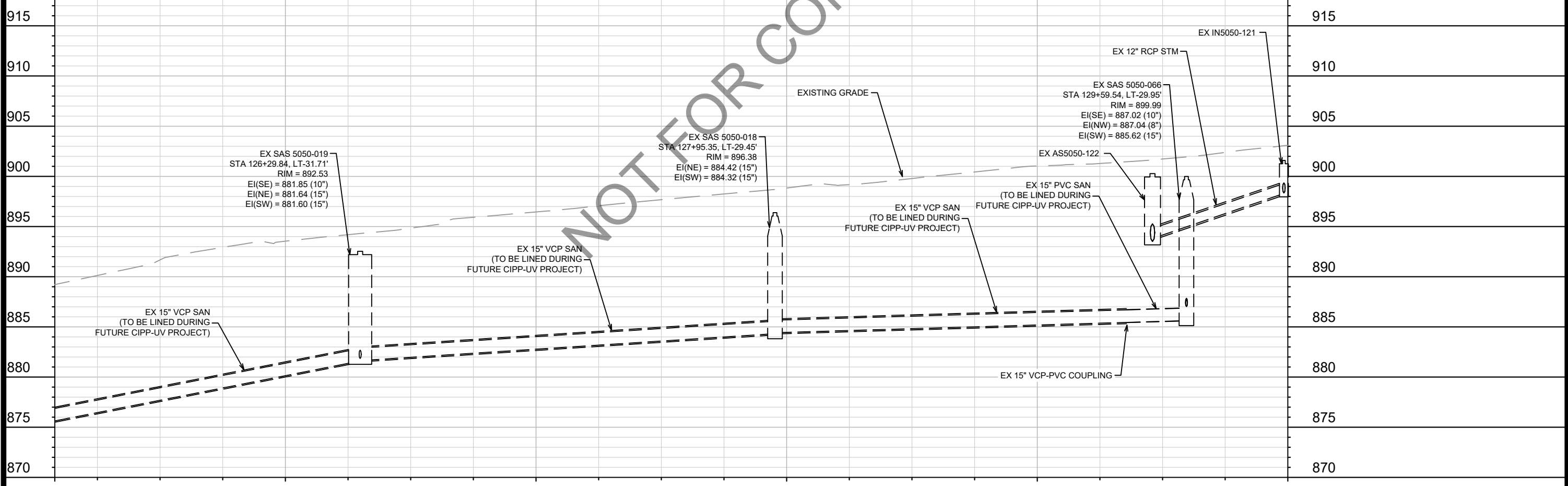
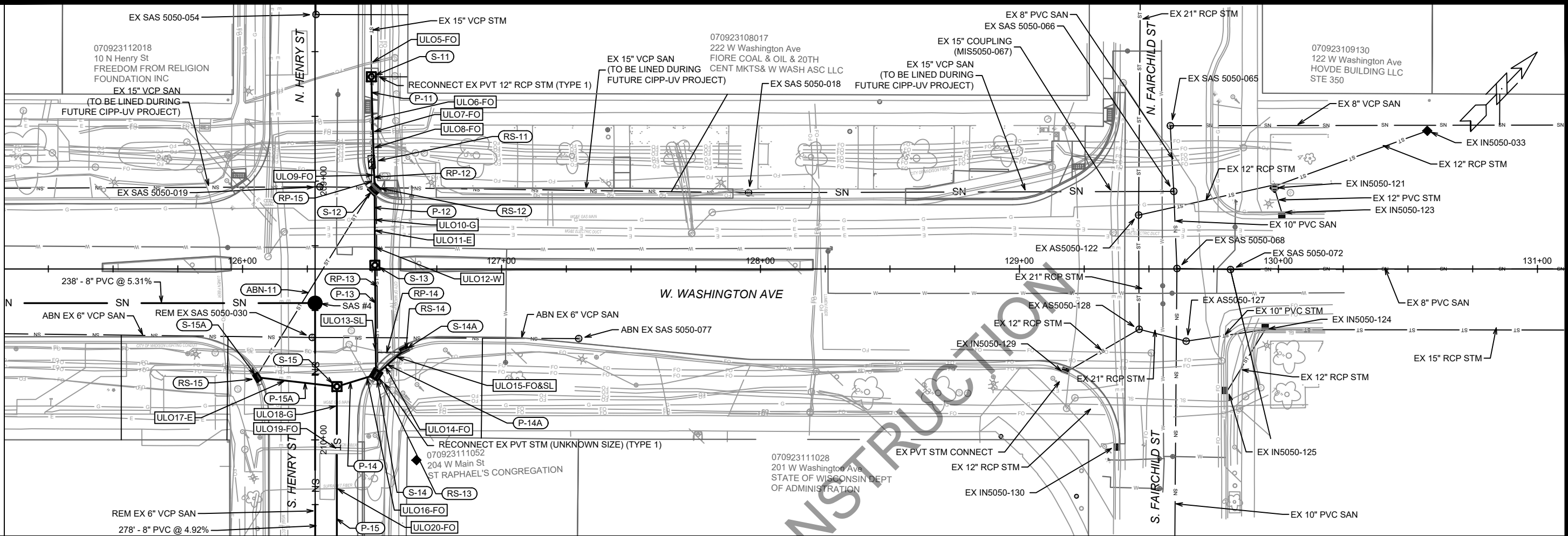


14389
 U-2



14389	14389	U-3
MADISON, WI	8476	U-3
CONTRACT NO:	8476	U-3
SEWER PLAN AND PROFILE - W. WASHINGTON AVE (NORTH SIDE)	14389	U-3
W. WASHINGTON AVENUE & HENRY STREET RESURFACING	14389	U-3
M:\DESIGN\Projects\14389\CAD\Drawings\14389SWR-PipeNetwork.dwg	14389	U-3

MATCH LINE 125+08.00



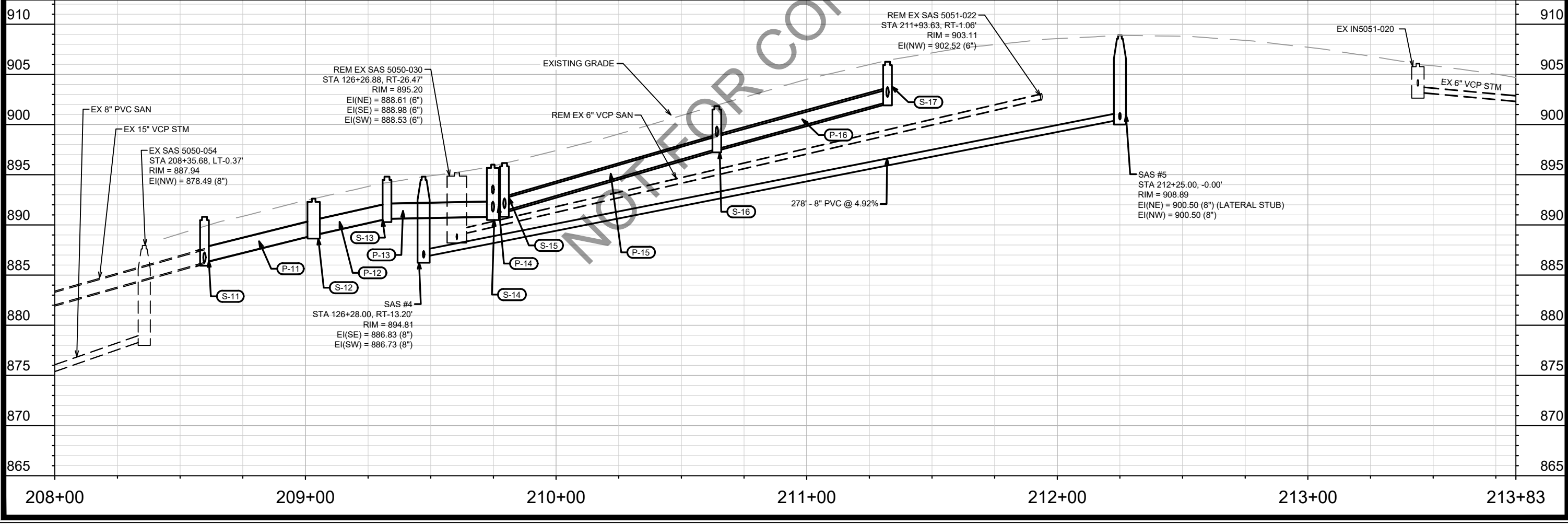
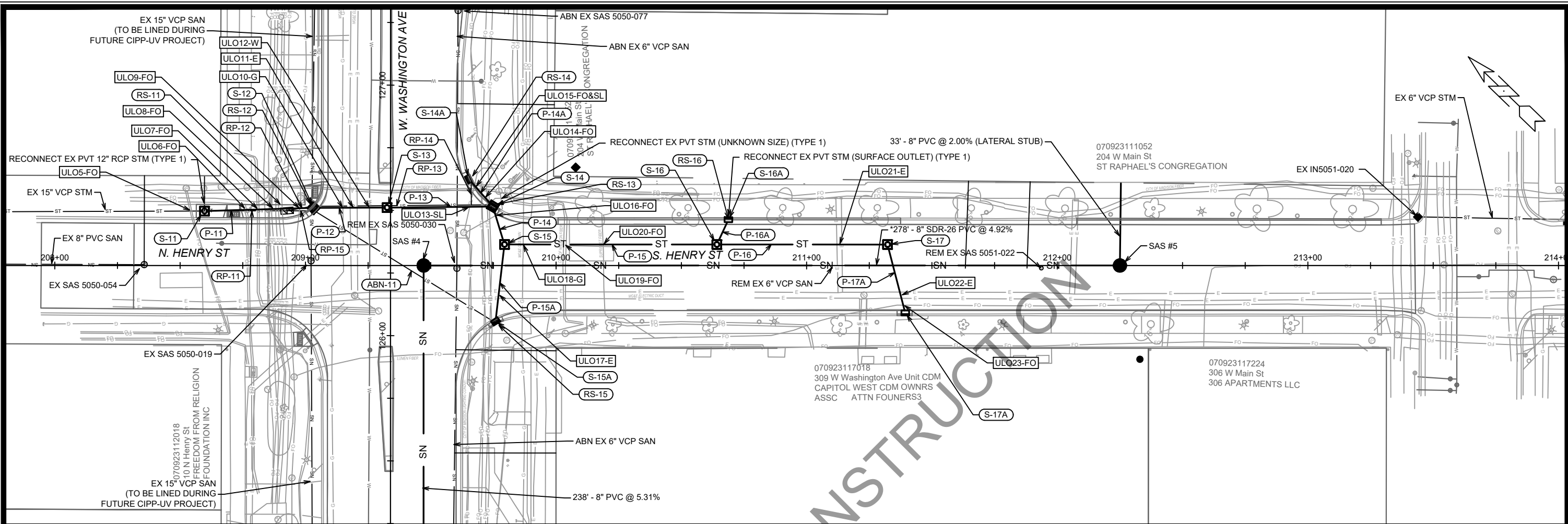
125+08 126+00 127+00 128+00 129+00 130+00

DATE	BY
REVISION	DATE
MARK	DATE
14389	U-4

14389
 MADISON, WI
 WASHINGTON AVENUE & HENRY STREET RESURFACING
 CONTRACT NO: 8476
 M:\DESIGN\Projects\14389\CAD\Sewers\14389SWR-PipeNetwork.dwg



14389
 U-4



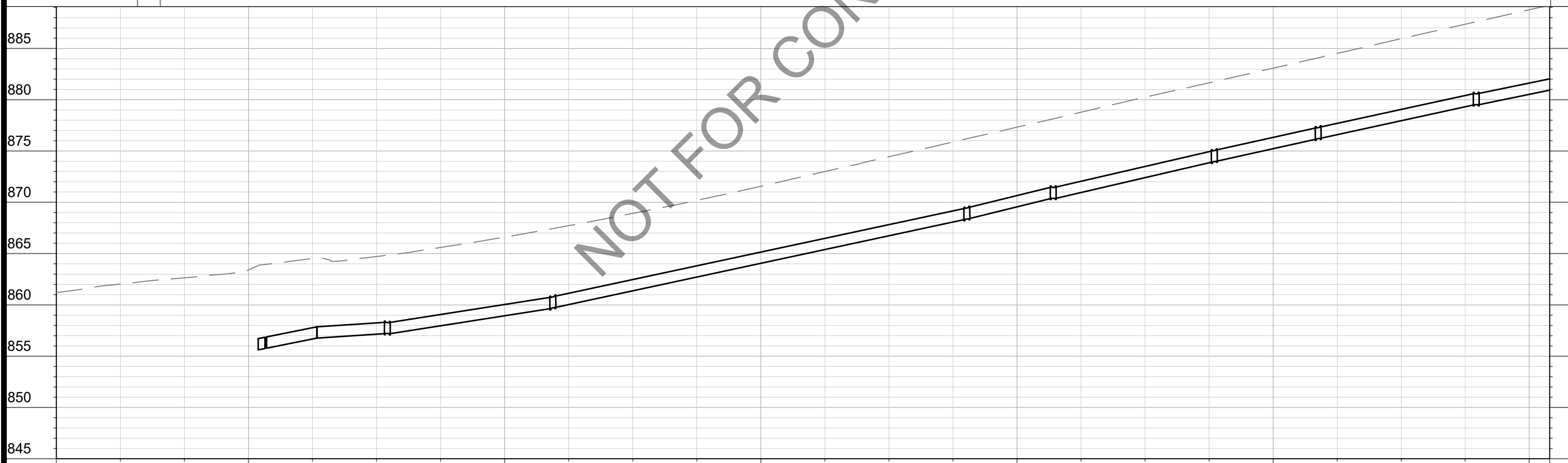
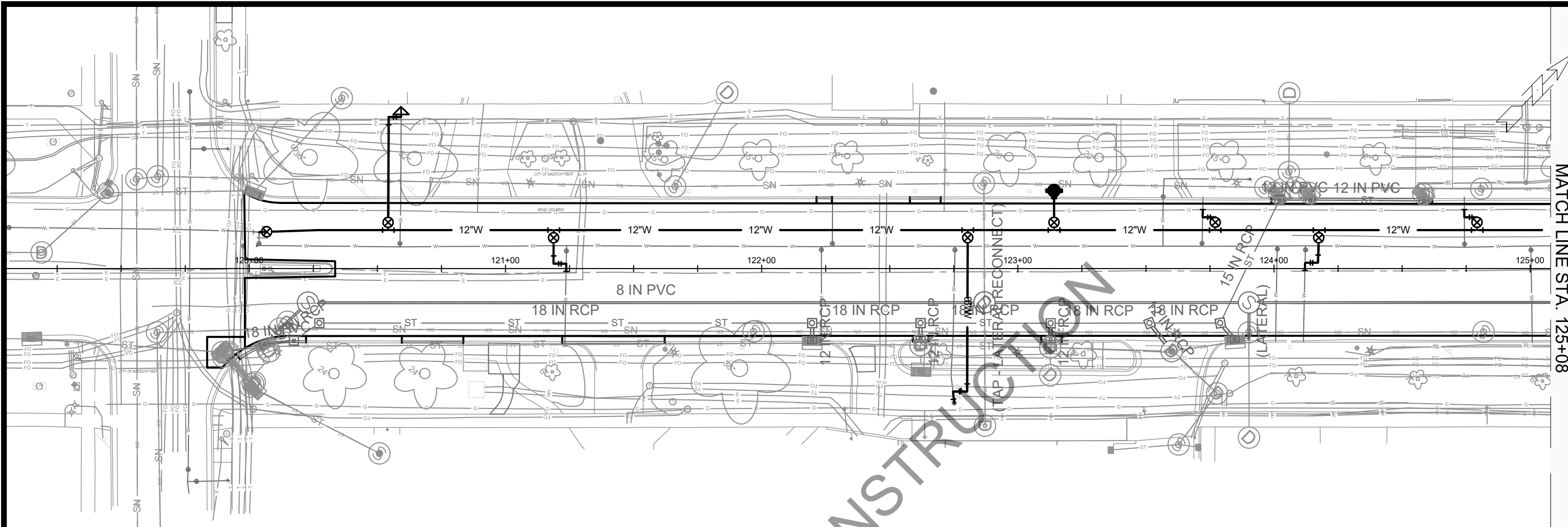
MARK	REVISION	DATE	BY
14389	14389	10/30/24	U-5

14389
MADISON, WI
CONTRACT NO.: 8476

SEWER PLAN AND PROFILE - HENRY ST
W. WASHINGTON AVENUE & HENRY STREET RESURFACING

M:\DESIGN\Projects\14389\CAD\Sewers\14389SWR-PipeNetwork.dwg

14389
U-5



MATCH LINE STA. 125+08

MARK	REVISION	DATE	BY

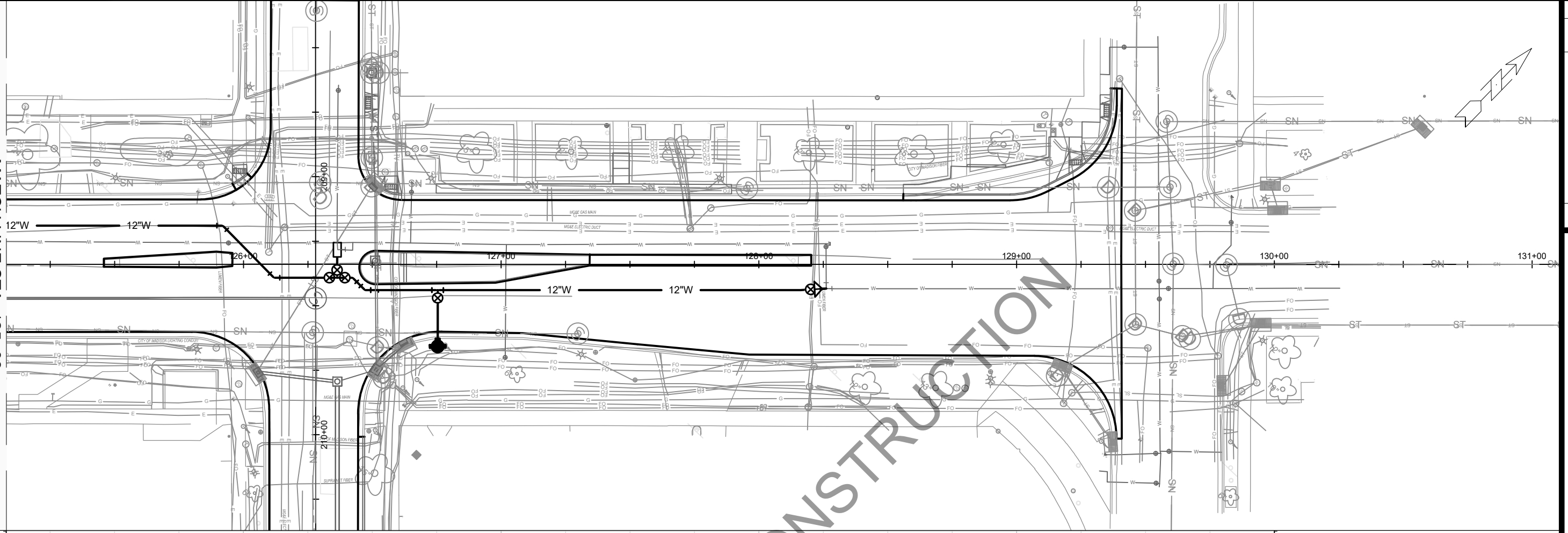
14389
 WEST WASHINGTON AVENUE AND HENRY STREET RESURFACING
 MADISON, WI
 CONTRACT NO.: 8746

W-1
 M:\DESIGN\Projects\14389\CAD\Water\14389WU-Water.dwg
 Designed By: MFG Date: 2/13/2024 1:02 PM Scale: #####



14389

MATCH LINE STA. 125+08

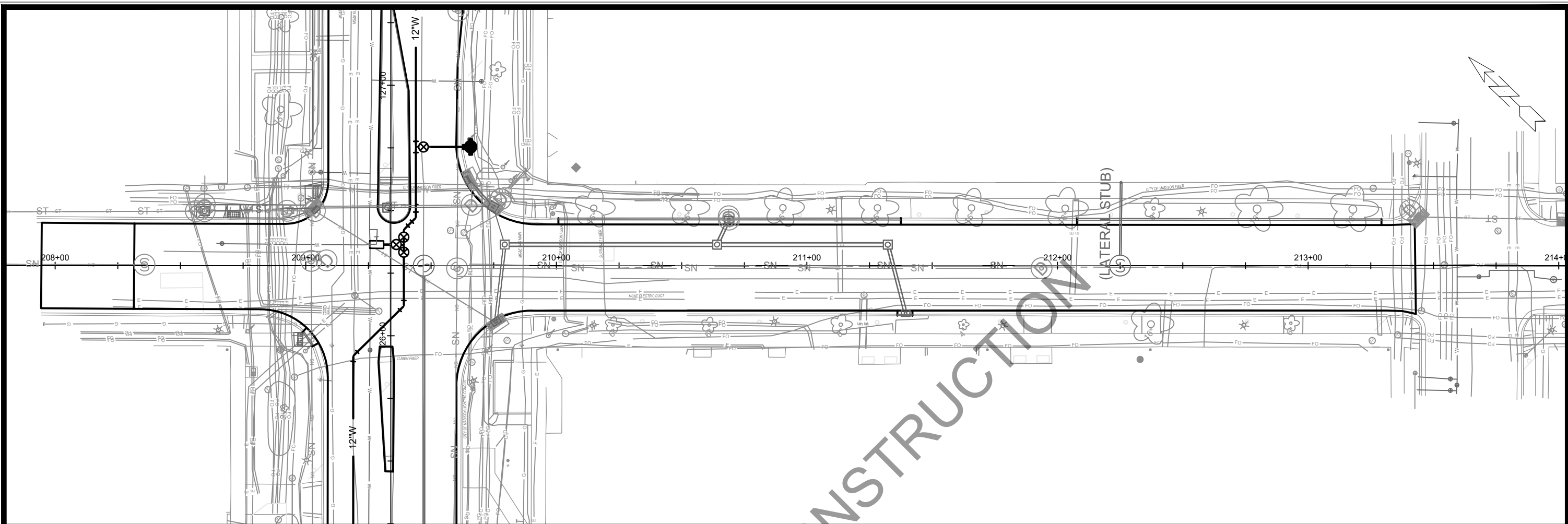



MARK	REVISION	DATE	BY

14389
 WEST WASHINGTON AVENUE AND HENRY STREET RESURFACING
 MADISON, WI
 CONTRACT NO: 8746

W-2
 WEST WASHINGTON AVENUE AND HENRY STREET RESURFACING
 MADISON, WI
 M:\DESIGN\Projects\14389\CAD\Water\14389WU-Water.dwg
 14389





	14389
	W-3
WEST WASHINGTON AVENUE AND HENRY STREET RESURFACING MADISON, WI <small>M:\DESIGN\Projects\14389\CAD\Water\14389WU-Water.dwg</small>	CONTRACT NO: 8746 14389
MARK: _____ REVISION: _____ DATE: _____ Designed By: MFG Date: 2/13/2024 1:03 PM Scale: #####	BY: _____ DATE: _____ Scale: #####