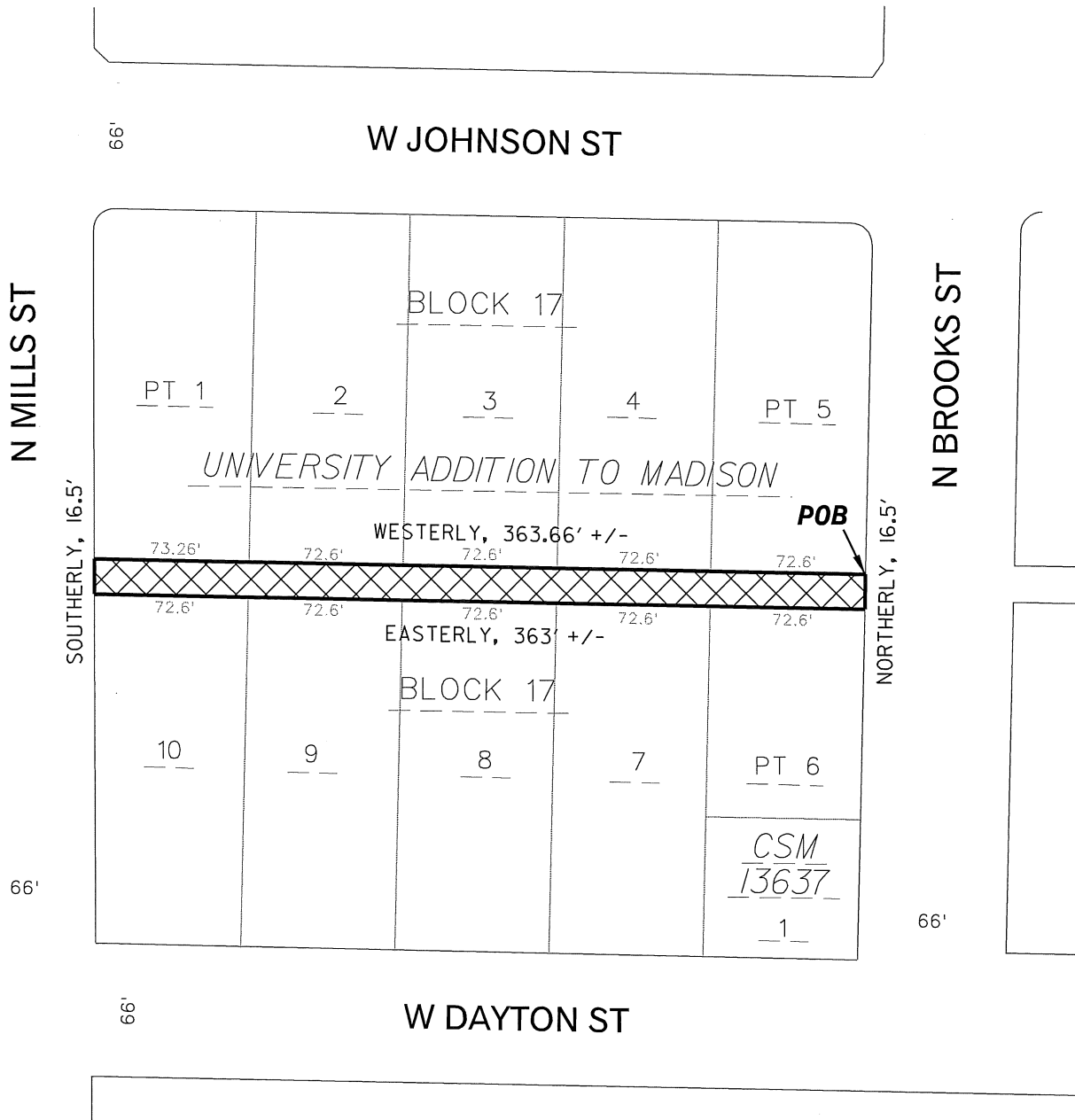
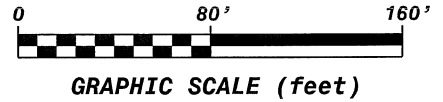


**STREET TO BE VACATED/DISCONTINUED**  
**DEPARTMENT OF PUBLIC WORKS**  
**CITY ENGINEERING DIVISION**  
**CITY OF MADISON, WI**  
**CLYMER PLACE**



PORTION OF CLYMER PLACE TO BE VACATED/DISCONTINUED

FILENAME:  
M:\DESIGN\Projects\ 53W1496\Clymer P1 Vacation\Map Exhibit.dgn  
DATE: 04/25/2014  
ENGR. PROJ. NO. 53W1496  
REVISED: