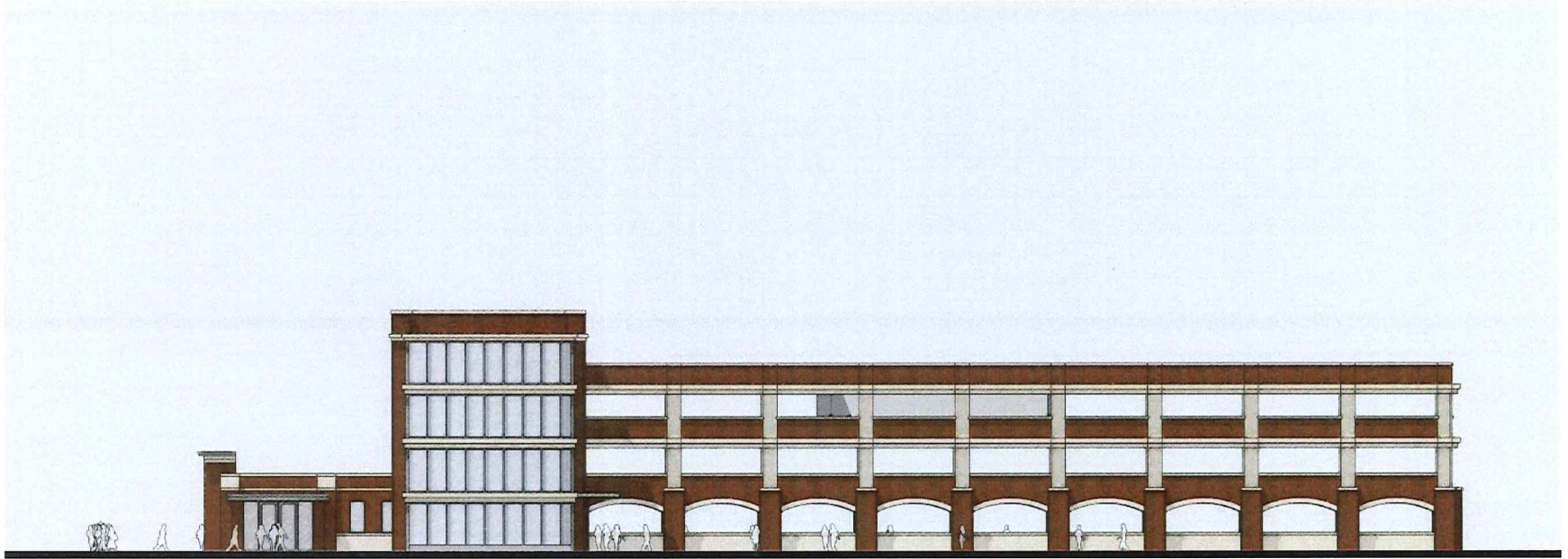


South Elevation



#8



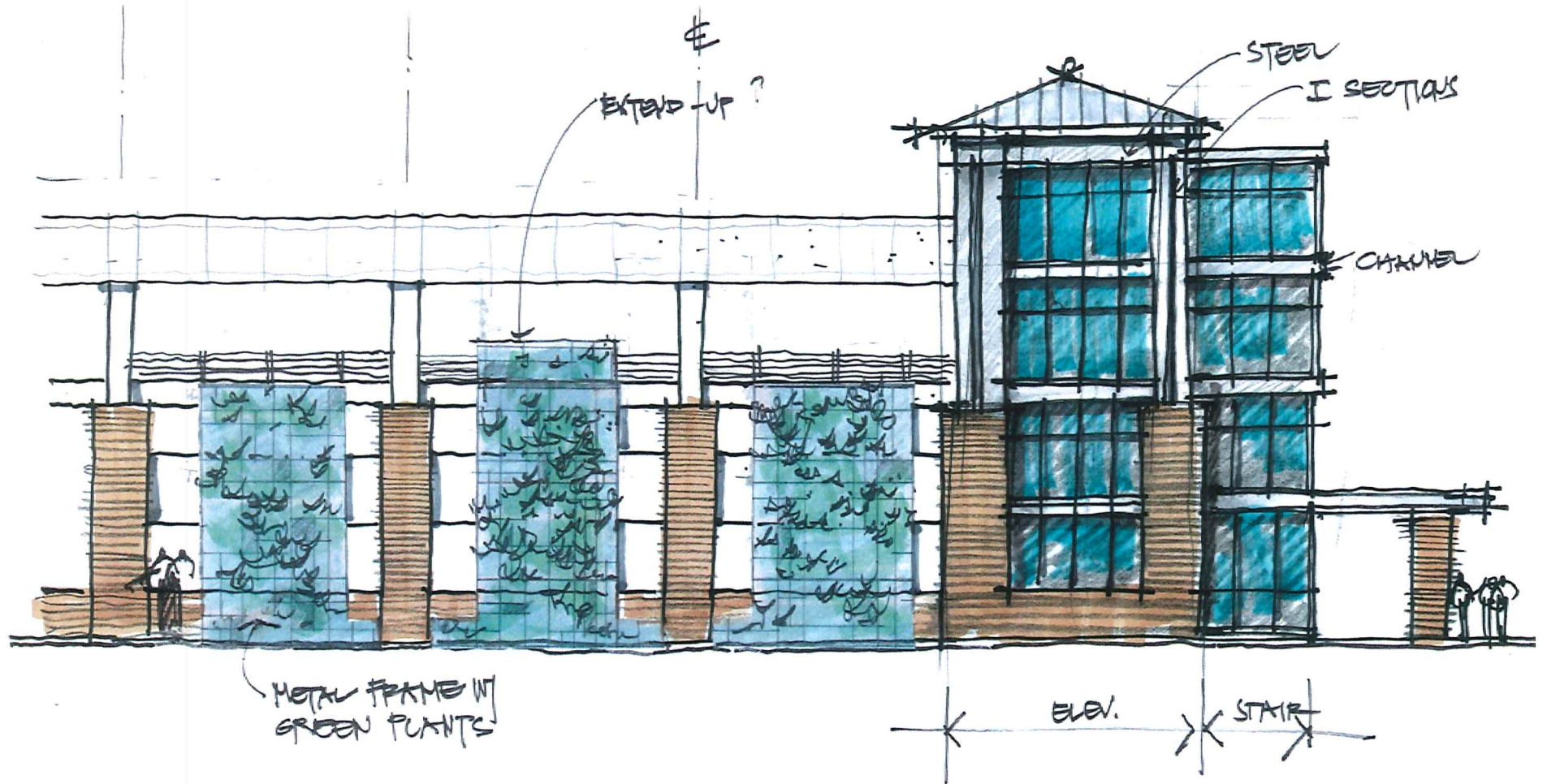
East Elevation



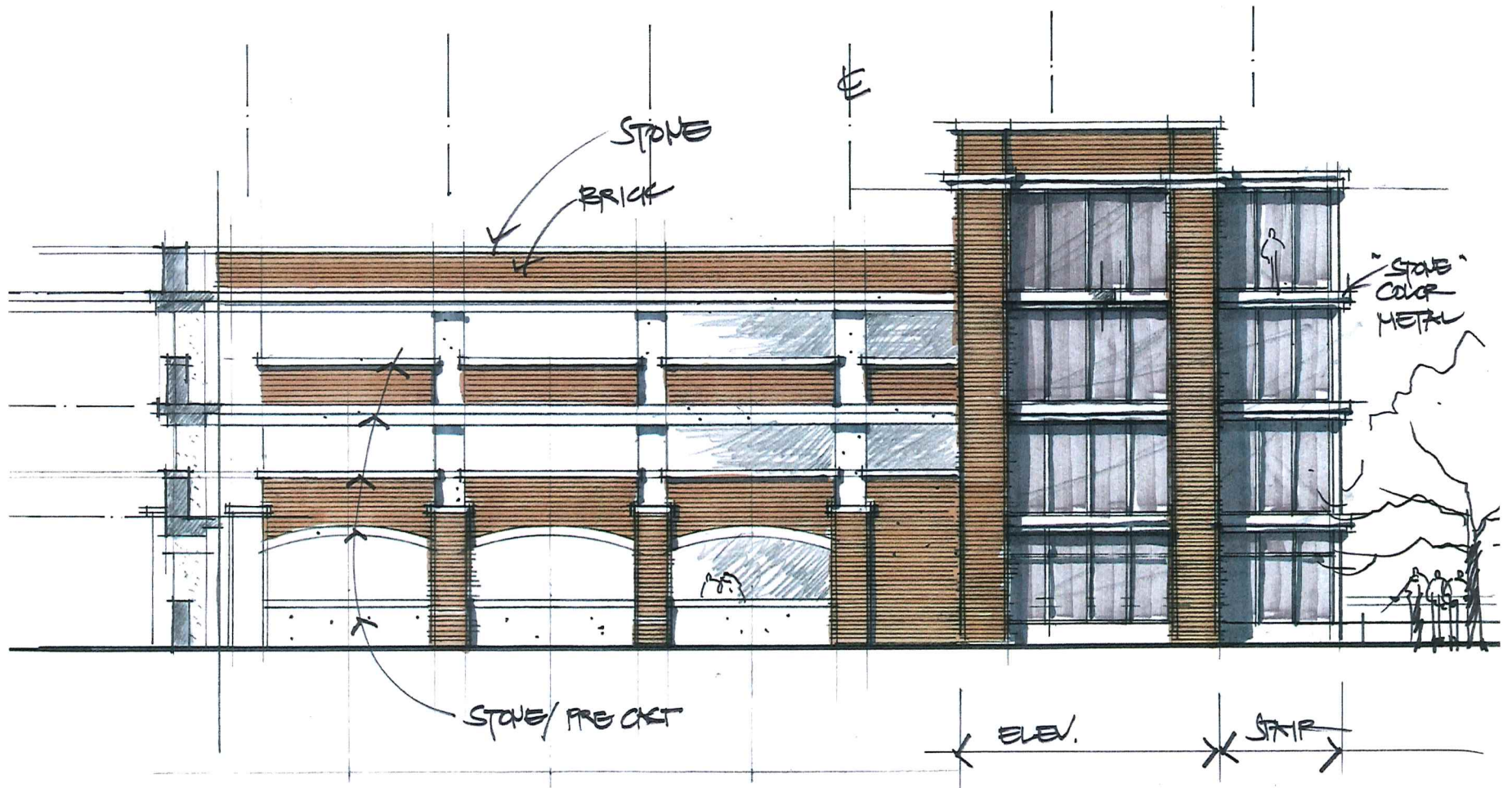
South Elevation



# Concept Options



# Concept Options





View looking North

KEY	TEAM MEMBERS
<span style="display: inline-block; width: 15px; height: 15px; background-color: #f0e68c; border: 1px solid black; margin-right: 5px;"></span> Residential	Archipelago Village LLC - Owner
<span style="display: inline-block; width: 15px; height: 15px; background-color: #f4a460; border: 1px solid black; margin-right: 5px;"></span> Retail	Plunkett Raysich Architects, LLP - Architect
<span style="display: inline-block; width: 15px; height: 15px; background-color: #c08060; border: 1px solid black; margin-right: 5px;"></span> Office	Potter Lawson, Inc. - Architect (Kleuter Building)
<span style="display: inline-block; width: 15px; height: 15px; background-color: #8090a0; border: 1px solid black; margin-right: 5px;"></span> Parking	Ken Saiki Design - Landscape Architect
	Oneida Total Integrated Enterprises (OTIE) - Civil Engineer
	Henneman Engineering, Inc. - Structural Engineer
	Walker Parking Consultant - Parking Consultant
	Ayres Associates - Traffic Consultant



View looking Northeast on East Washington towards the Interstate

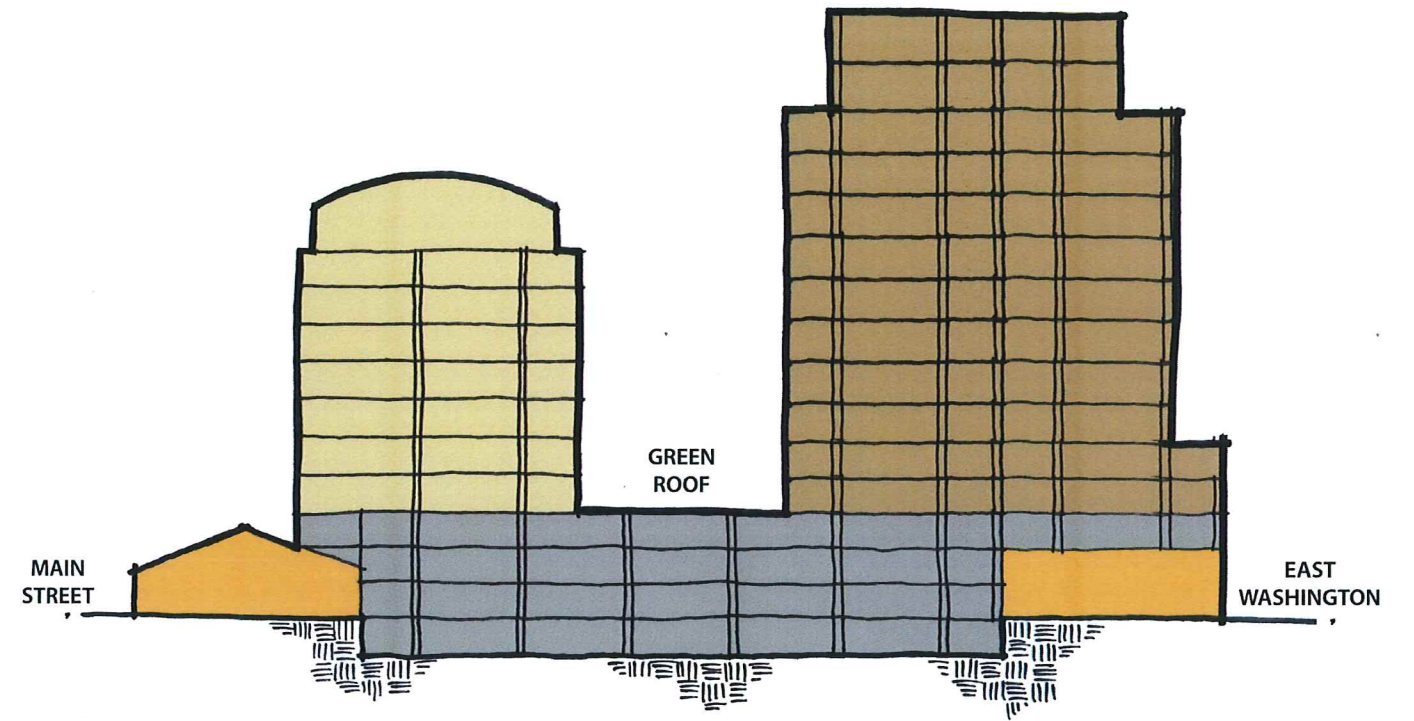
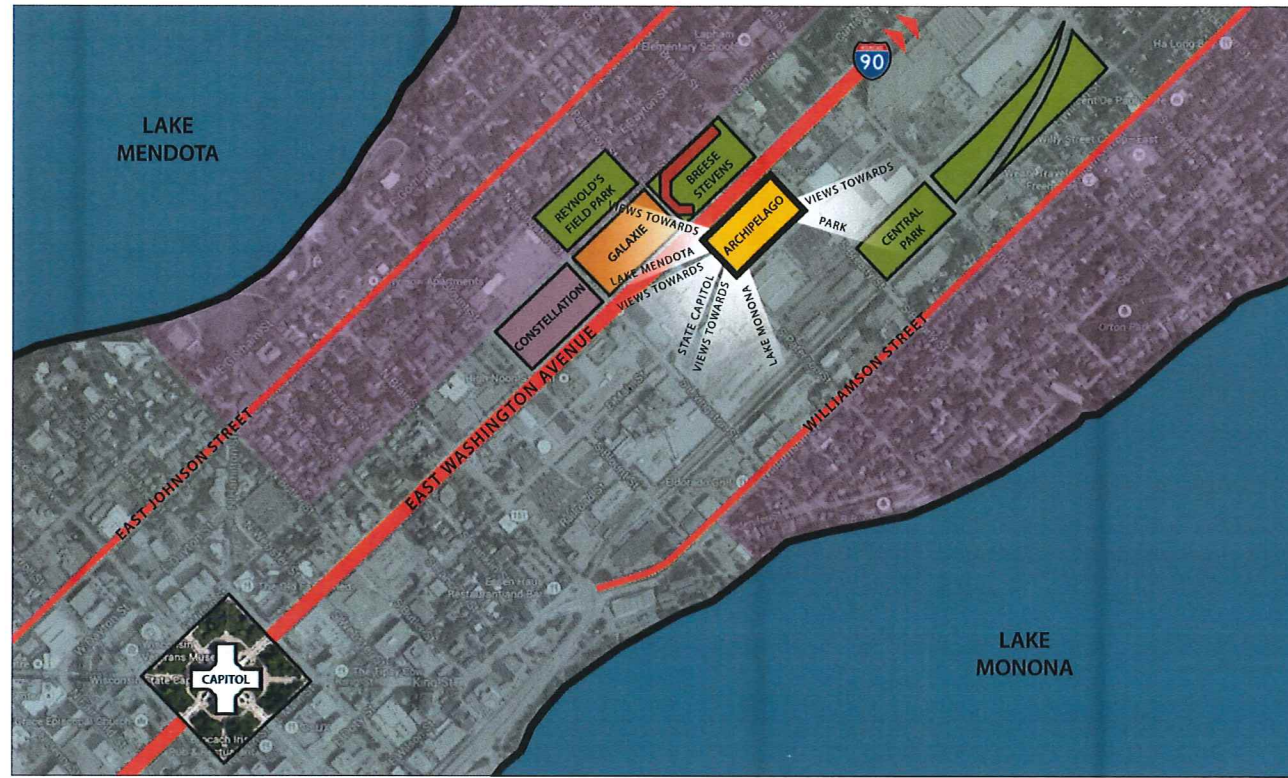


View looking Southwest on East Washington towards Capitol

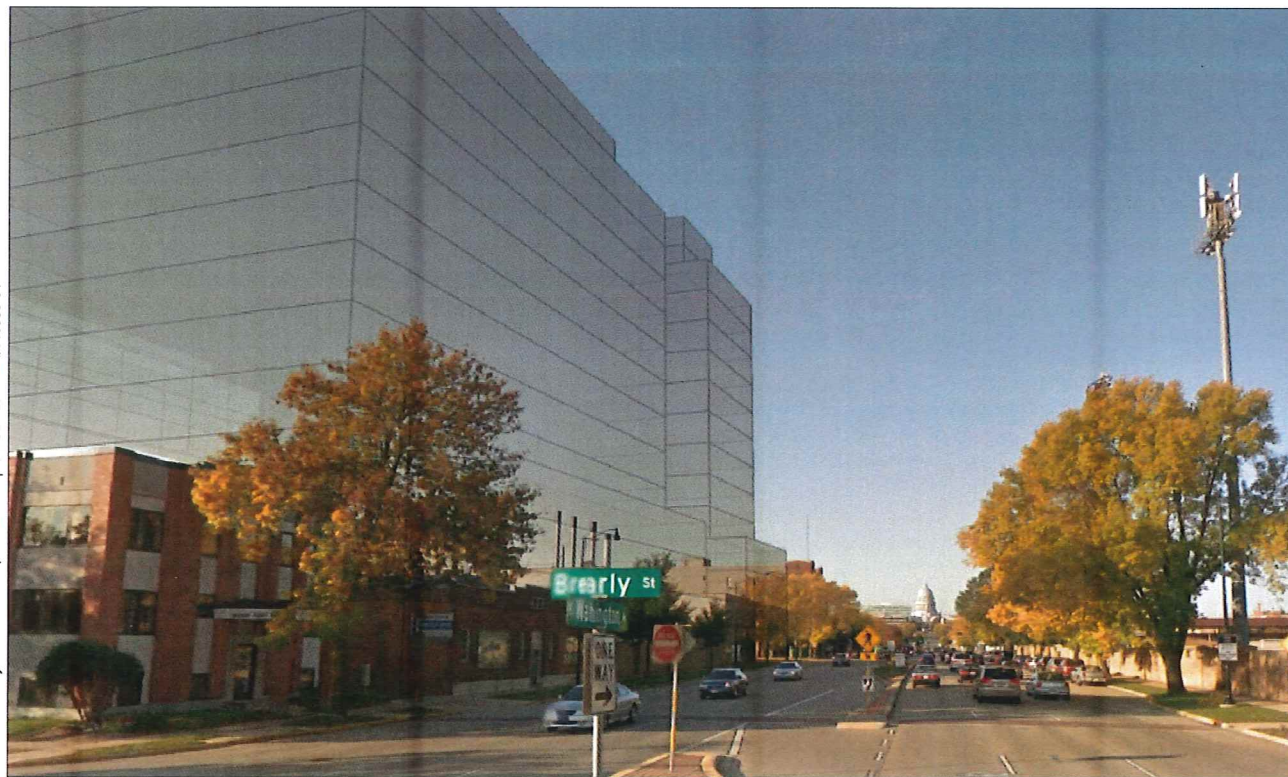
©2014 Plunkett Raysich Architects, LLP - 11 September 2014 - #140060-01



©2014 Plunkett Raysich Architects, LLP - 11 September 2014 - #140060-01



Parking Section Diagram



©2014 Plunkett Raysich Architects, LLP - 11 September 2014 - #140060-01

View Corridor to State Capitol along East Washington Avenue



Street Activity on Main Street





©2014 Plunkett Raysich Architects, LLP - 11 September 2014 - #140060-01

View at Intersection of Main Street and Brearly Street Looking West



©2014 Plunkett Raysich Architects, LLP - 11 September 2014 - #140060-01

View Along Main Street Looking North



View looking North

KEY	TEAM MEMBERS
<span style="display: inline-block; width: 15px; height: 15px; background-color: #f0e68c; border: 1px solid black; margin-right: 5px;"></span> Residential	Archipelago Village LLC - Owner
<span style="display: inline-block; width: 15px; height: 15px; background-color: #f4a460; border: 1px solid black; margin-right: 5px;"></span> Retail	Plunkett Raysich Architects, LLP - Architect
<span style="display: inline-block; width: 15px; height: 15px; background-color: #c08060; border: 1px solid black; margin-right: 5px;"></span> Office	Potter Lawson, Inc. - Architect (Kleuter Building)
<span style="display: inline-block; width: 15px; height: 15px; background-color: #809090; border: 1px solid black; margin-right: 5px;"></span> Parking	Ken Saiki Design - Landscape Architect
	Oneida Total Integrated Enterprises (OTIE) - Civil Engineer
	Henneman Engineering, Inc. - Structural Engineer
	Walker Parking Consultant - Parking Consultant
	Ayres Associates - Traffic Consultant



©2014 Plunkett Raysich Architects, LLP - 11 September 2014 - #140060-01

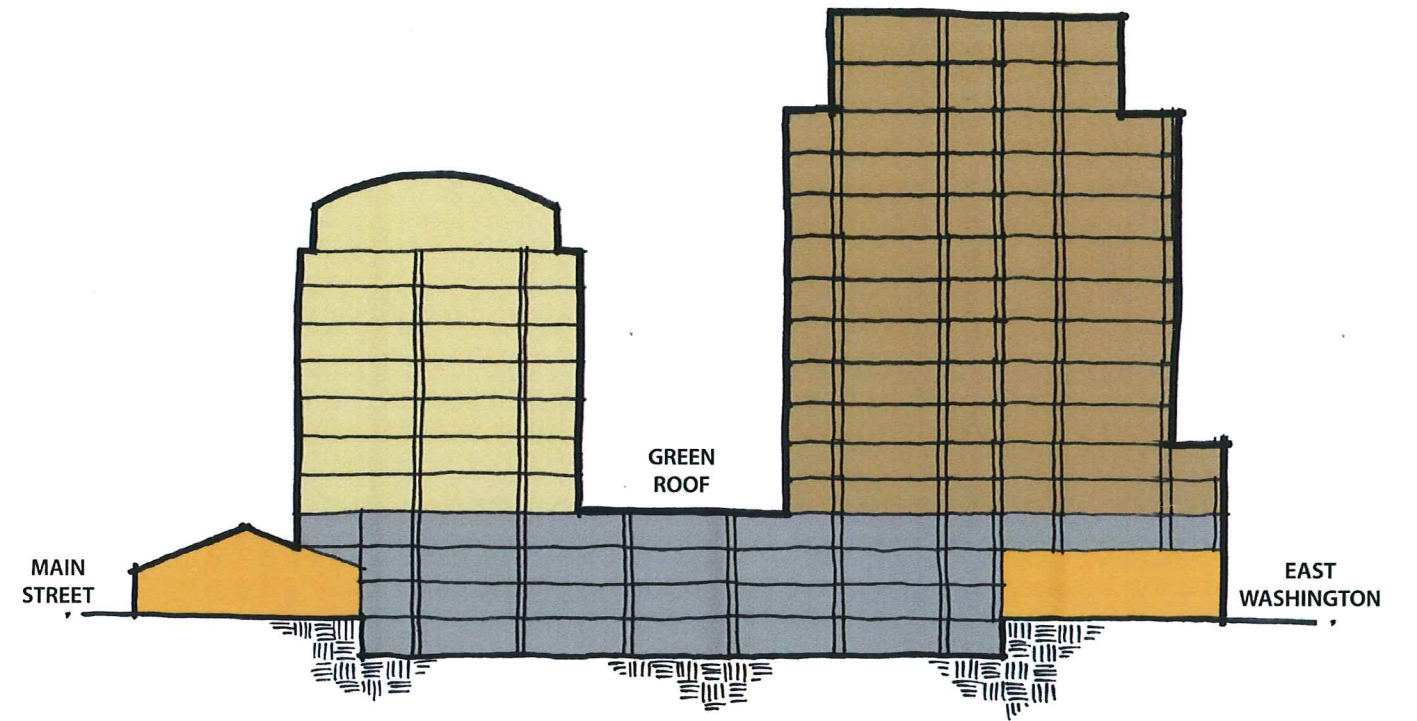
View looking Northeast on East Washington towards the Interstate



View looking Southwest on East Washington towards Capitol



©2014 Plunkett Raysich Architects, LLP - 11 September 2014 - #140060-01



Parking Section Diagram



©2014 Plunkett Raysich Architects, LLP - 11 September 2014 - #140060-01

View Corridor to State Capitol along East Washington Avenue



Street Activity on Main Street



©2014 Plunkett Raysich Architects, LLP - 11 September 2014 - #14060-01

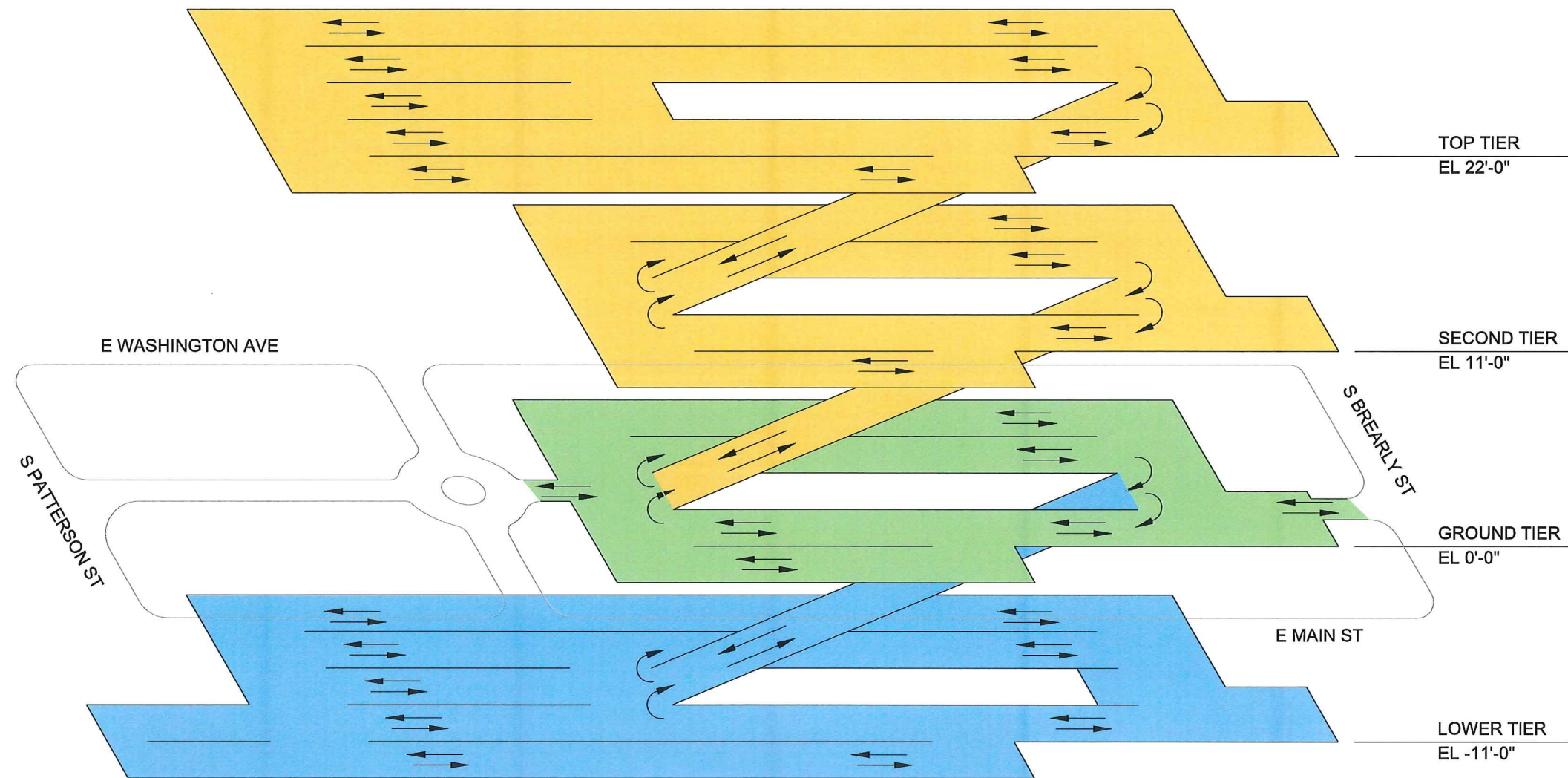
View at Intersection of Main Street and Brearly Street Looking West



©2014 Plunkett Raysich Architects, LLP - 11 September 2014 - #140060-01

View Along Main Street Looking North

ISOMETRIC  
OPTION 1



ABOVE GRADE PARKING



AT GRADE PARKING



BELOW GRADE PARKING

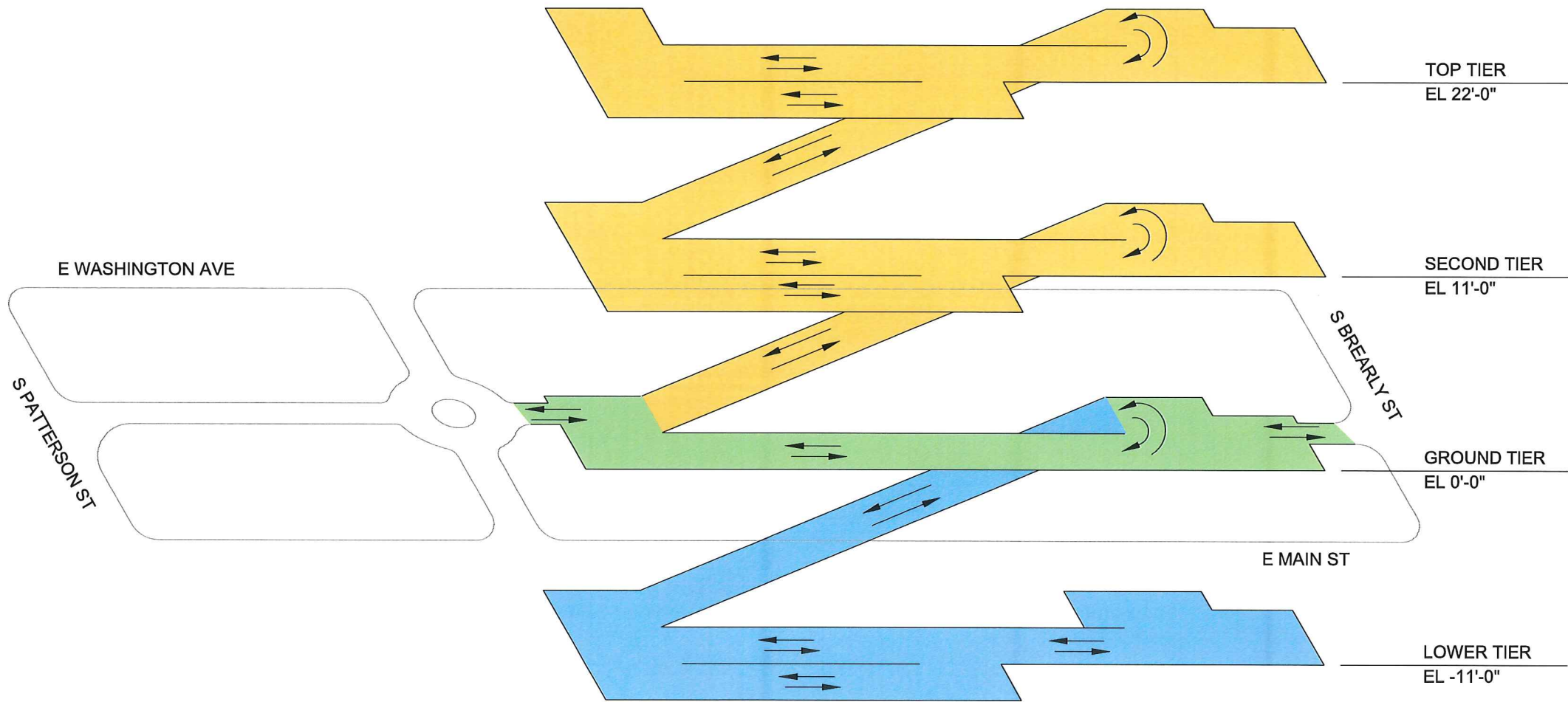


LEGEND

Scale: NTS  
A-100



ISOMETRIC  
OPTION 1  
PHASE 1



ISOMETRIC

ABOVE GRADE PARKING



AT GRADE PARKING

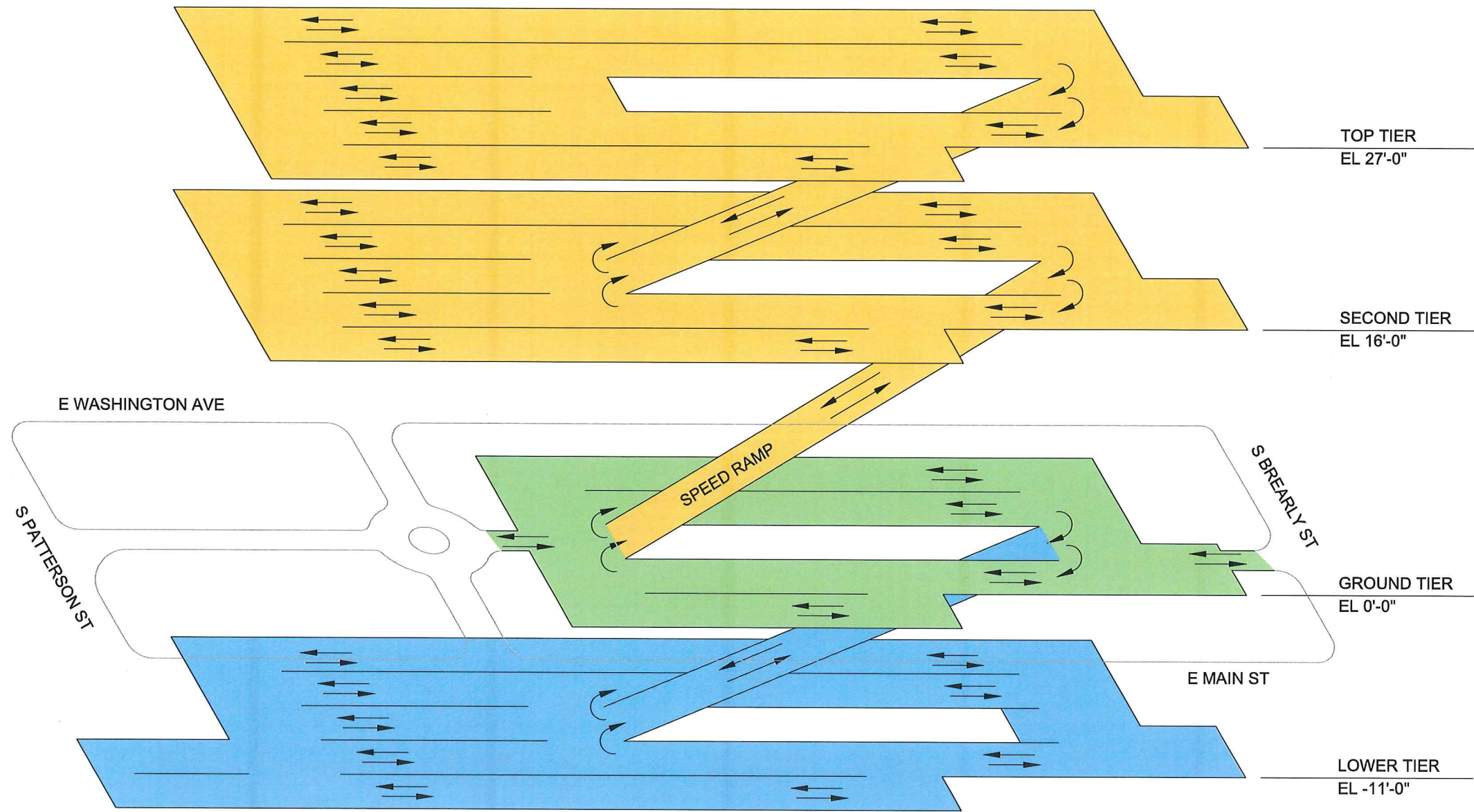


BELOW GRADE PARKING



LEGEND

ISOMETRIC  
OPTION 2



ISOMETRIC

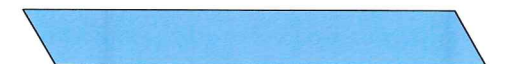
ABOVE GRADE PARKING



AT GRADE PARKING



BELOW GRADE PARKING



LEGEND

Scale: NTS  
A-200