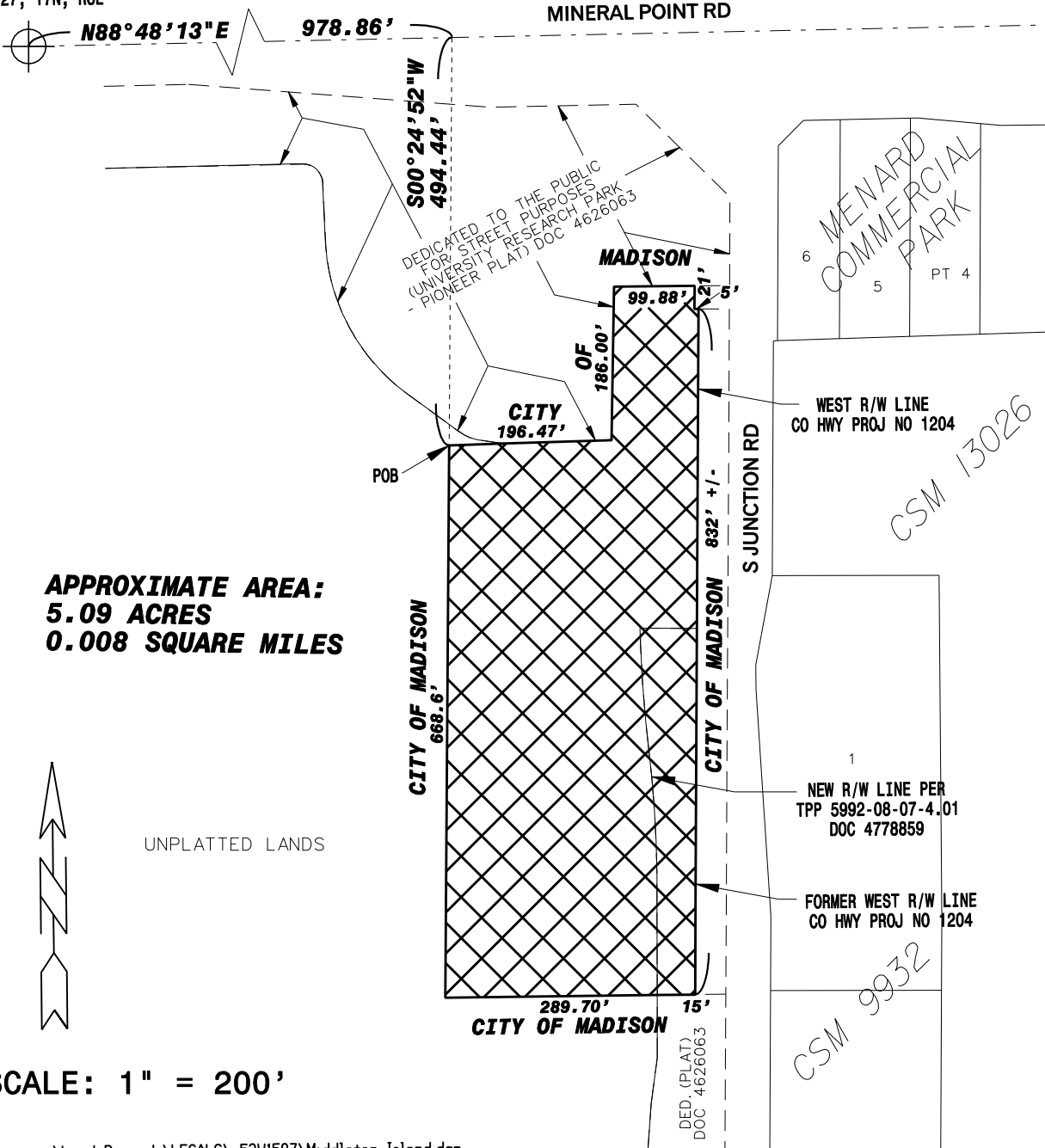


# ATTACHMENT OF TOWN OF MIDDLETON ISLAND TO THE CITY OF MADISON

DEPARTMENT OF PUBLIC WORKS  
CITY ENGINEERING DIVISION  
MADISON, WISCONSIN

N 1/4 CORNER  
SEC 27, T7N, R8E



**APPROXIMATE AREA:  
5.09 ACRES  
0.008 SQUARE MILES**



UNPLATTED LANDS

SCALE: 1" = 200'

MENARD COMMERCIAL PARK  
6 5 PT 4

WEST R/W LINE  
CO HWY PROJ NO 1204

CSM 13026

NEW R/W LINE PER  
TPP 5992-08-07-4.01  
DOC 4778859

FORMER WEST R/W LINE  
CO HWY PROJ NO 1204

CSM 9932

DED. (PLAT)  
DOC 4626063