

# CERTIFIED SURVEY MAP NO.

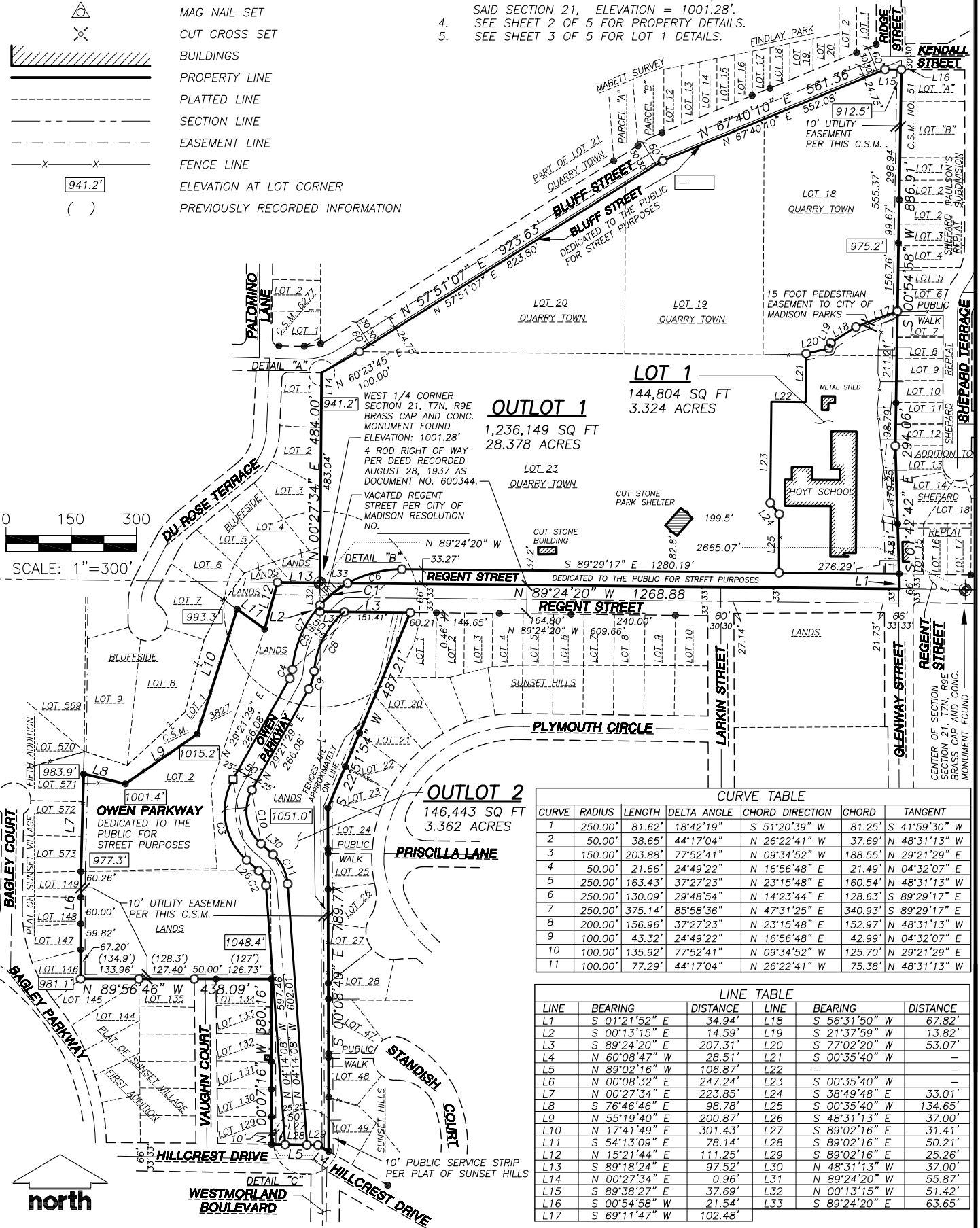
LOTS 18, 19, 20 AND 23 OF QUARRY TOWN, LOT 2 OF CERTIFIED SURVEY MAP NO. 3827, PART OF THE NORTHEAST 1/4 OF THE SOUTHEAST 1/4 OF SECTION 20 AND PART OF THE NORTHWEST 1/4 OF THE SOUTHWEST 1/4 OF SECTION 21, ALL IN T7N, R9E, TOWN (NOW CITY) OF MADISON, DANE COUNTY, WISCONSIN

## LEGEND

- SECTION CORNER
- PROPERTY CORNER FOUND
- 3/4" X 24" LONG IRON REBAR SET
- RAILROAD SPIKE SET
- MAG NAIL SET
- CUT CROSS SET
- BUILDINGS
- PROPERTY LINE
- PLATTED LINE
- SECTION LINE
- EASEMENT LINE
- FENCE LINE
- ELEVATION AT LOT CORNER
- PREVIOUSLY RECORDED INFORMATION

## NOTES

- BEARINGS ARE REFERENCED TO THE SOUTH LINE OF NORTHWEST 1/4 OF SECTION 21, T7N, R9E, RECORDED AS N 89°24'20" W.
- BOUNDARY SURVEY PERFORMED BY JENKINS SURVEY & DESIGN, INC. APRIL 25-29, 2005.
- ELEVATIONS REFERENCED TO NAVD 88. BENCHMARK IS BRASS CAP & CONC. MON. AT WEST 1/4 CORNER OF SAID SECTION 21, ELEVATION = 1001.28'.
- SEE SHEET 2 OF 5 FOR PROPERTY DETAILS.
- SEE SHEET 3 OF 5 FOR LOT 1 DETAILS.



CURVE	RADIUS	LENGTH	DELTA ANGLE	CHORD DIRECTION	CHORD	TANGENT
1	250.00'	81.62'	18°42'19"	S 51°20'39" W	81.25'	S 41°59'30" W
2	50.00'	38.65'	44°17'04"	N 26°22'41" W	37.69'	N 48°31'13" W
3	150.00'	203.88'	77°52'41"	N 09°34'52" W	188.55'	N 29°21'29" E
4	50.00'	21.66'	24°49'22"	N 16°56'48" E	21.49'	N 04°32'07" E
5	250.00'	163.43'	37°27'23"	N 23°15'48" E	160.54'	N 48°31'13" W
6	250.00'	130.09'	29°48'54"	N 14°23'44" E	128.63'	S 89°29'17" E
7	250.00'	375.14'	85°58'36"	N 47°31'25" E	340.93'	S 89°29'17" E
8	200.00'	156.96'	37°27'23"	N 23°15'48" E	152.97'	N 48°31'13" W
9	100.00'	43.32'	24°49'22"	N 16°56'48" E	42.99'	N 04°32'07" E
10	100.00'	135.92'	77°52'41"	N 09°34'52" W	125.70'	N 29°21'29" E
11	100.00'	77.29'	44°17'04"	N 26°22'41" W	75.38'	N 48°31'13" W

LINE	BEARING	DISTANCE	LINE	BEARING	DISTANCE
L1	S 01°21'52" E	34.94'	L18	S 56°31'50" W	67.82'
L2	S 00°13'15" E	14.59'	L19	S 21°37'59" W	13.82'
L3	S 89°24'20" E	207.31'	L20	S 77°02'20" W	53.07'
L4	N 60°08'47" W	28.51'	L21	S 00°35'40" W	-
L5	N 89°02'16" W	106.87'	L22	-	-
L6	N 00°08'32" E	247.24'	L23	S 00°35'40" W	-
L7	N 00°27'34" E	223.85'	L24	S 38°49'48" E	33.01'
L8	S 76°46'46" E	98.78'	L25	S 00°35'40" W	134.65'
L9	N 55°19'40" E	200.87'	L26	S 48°31'13" E	37.00'
L10	N 17°41'49" E	301.43'	L27	S 89°02'16" E	31.41'
L11	S 54°13'09" E	78.14'	L28	S 89°02'16" E	50.21'
L12	N 15°21'44" E	111.25'	L29	S 89°02'16" E	25.26'
L13	S 89°18'24" E	97.52'	L30	N 48°31'13" W	37.00'
L14	N 00°27'34" E	0.96'	L31	N 89°24'20" W	55.87'
L15	S 89°38'27" E	37.69'	L32	N 00°13'15" W	51.42'
L16	S 00°54'58" W	21.54'	L33	S 89°24'20" E	63.65'
L17	S 69°11'47" W	102.48'			

PREPARED BY:  
**JSD** • Engineers • Surveyors  
 Jenkins Survey & Design, Inc.  
 161 HORIZON DRIVE, SUITE 101  
 VERONA, WISCONSIN 53593  
 PHONE: (608)848-5060

PREPARED FOR:  
 MADISON METROPOLITAN  
 SCHOOL DISTRICT  
 545 WEST DAYTON ST.  
 MADISON WI 53703-1995

PROJECT NO: 05-1859 SURVEYED BY: SO  
 FILE NO: B-33 DRAWN BY: SO  
 FIELDBOOK/PG: 173/36-39 CHECKED BY: -  
 SHEET NO: 1 OF 5 APPROVED BY: -

C.S.M. NO. \_\_\_\_\_  
 DOC. NO. \_\_\_\_\_  
 VOL. \_\_\_\_\_ PAGE \_\_\_\_\_