

## Re: 104 East Gilman

JAN 28 2019

Planning & Community  
& Economic Development

### Masonry repairs:

We are asking to keep masonry pier as opposed to wood because brick was the material removed. As to size difference the three larger piers are positioned to accept hand railings to the staircases and are larger to create anchor points. The height of columns will depend on approved railing heights and design. The caps were sized according to close approximation of what was there before.

### Railings:

We are submitting plans for a new wrought iron railing. The original railings were in poor condition, but the artistic panel can be salvaged and incorporated into the new design (see drawing). Though the porch height is currently over 24 inches we propose to alter the landscaping to allow for the use of more historically appropriate 36 inch railing height.

### Coach lights:

As for the coach lights proposed on the two center columns, we felt added elimination at the steps would create a safer and more inviting feel. Lighting now is provided by 2 can lights under half round porch. For this reason we would like to keep this feature, but realize this is not original to the property (but neither are the lights above entry). We will submit several choices for the light to minimize distraction and still create a safe and inviting entryway.

### Spindled rail:

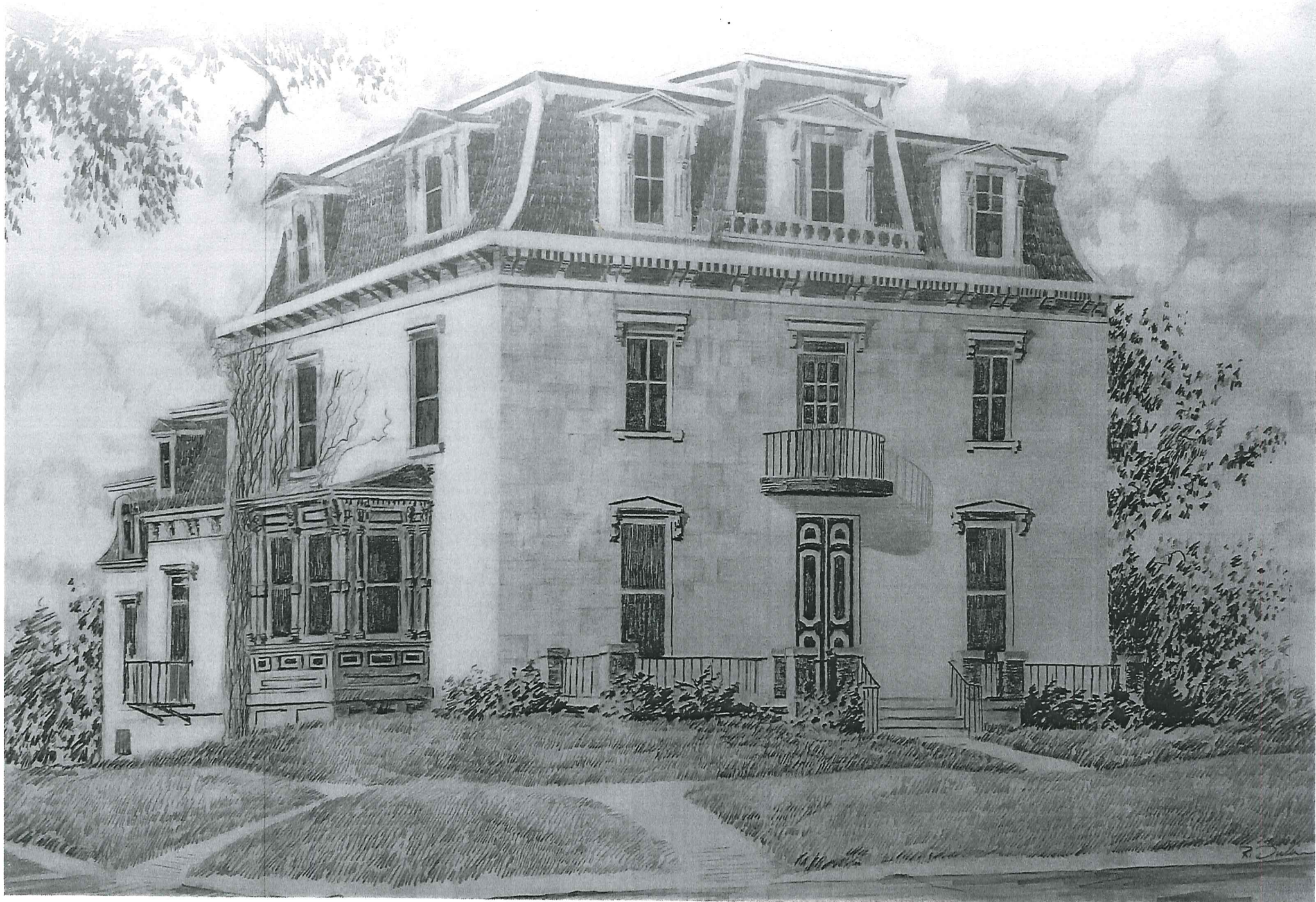
Lastly, in the process of restoration it has come to our notice that a spindled railing on 3<sup>rd</sup> floor mansard is in disrepair and has plant life growing around it. We wish to remove and rebuild this feature reusing parts such as spindles, or as closely matching as possible. We would look to rebuild using cedar or similar rot resistant wood, and paint to match existing rail.

In conclusion, it is our goal as well as yours to maintain the historic beauty and accuracy of this building. In our zeal, we have altered items without approval and this is our error. We hope now to rectify this problem. We realize to do this we may have to modify some of our alterations, but hope that our reasons for these changes will allow us to achieve the look we want with historical accuracy.













Mansion Hill  
APARTMENTS  
255-8633

104





Mansion Hill  
APARTMENTS  
255-8633

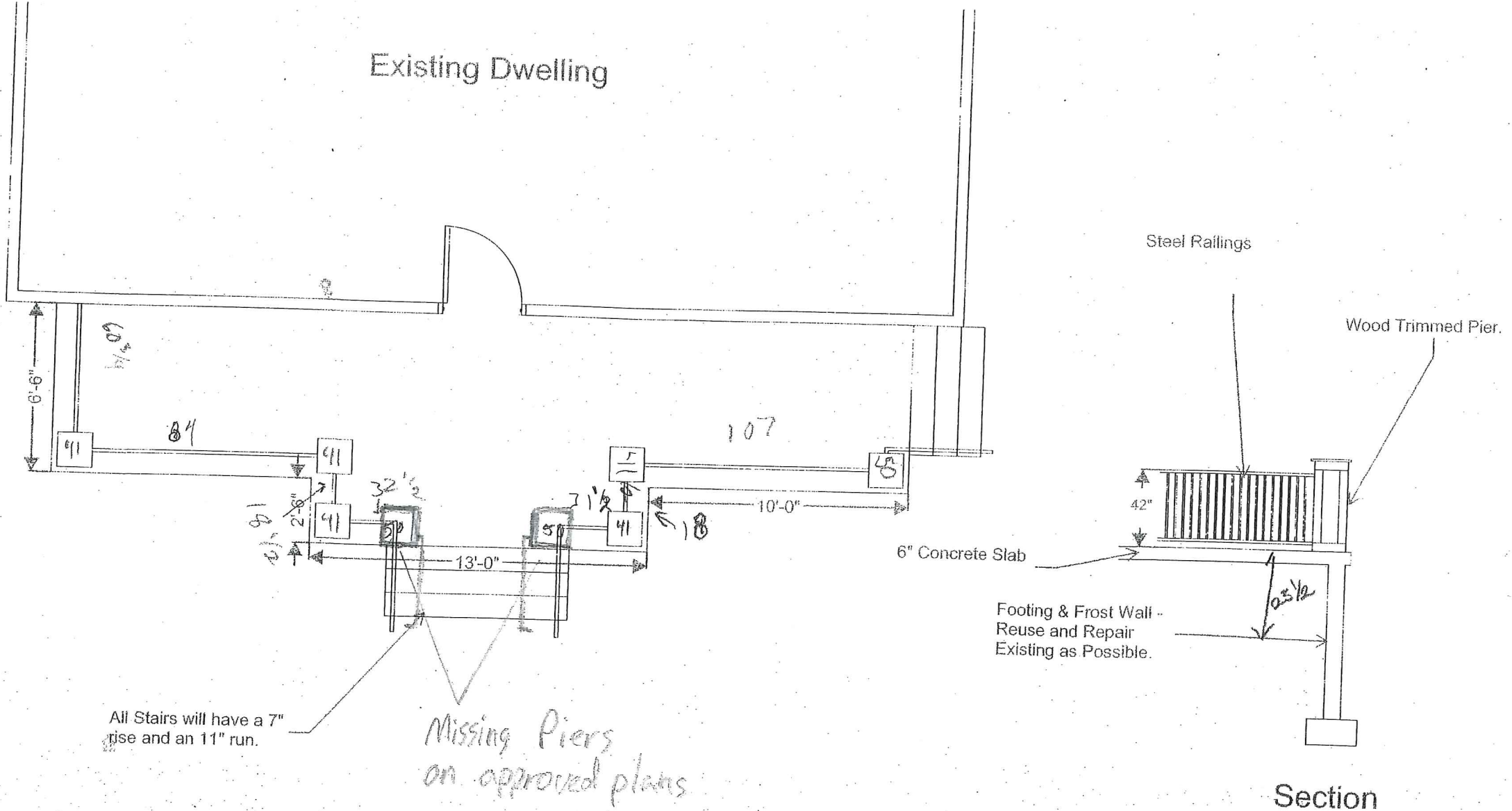
104

104








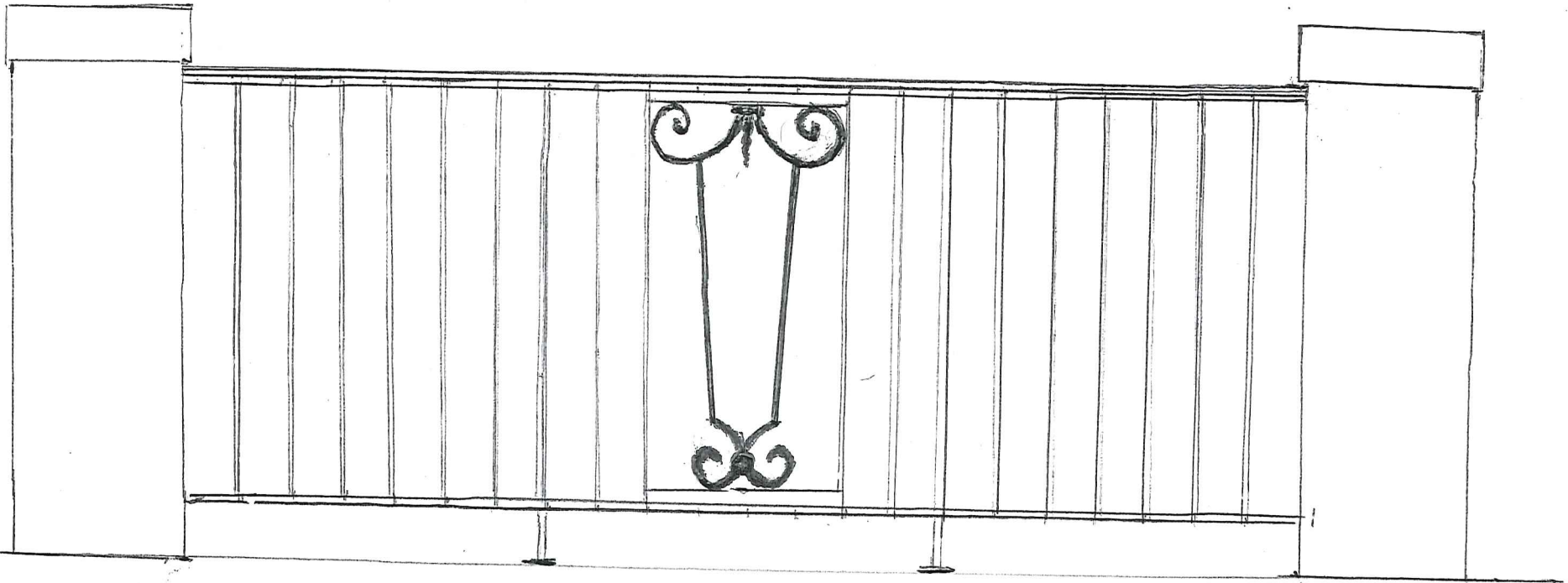


A1.0 Front Entrance Replacement Plan

		 <p>IDEAL BUILDERS</p>	<p>PROJECT NAME: Front Entrance Repair / Replacement</p> <p>ADDRESS: 104 E Gilman Street Madison, WI</p> <p>DRAWN BY: BJB DATE: 8.2.16</p>	<p>SHEET TITLE</p> <p><b>A1.0</b></p>
--	--	---	--	---------------------------------------

# Railing Detail

center detail salvaged from original railings



Railing 32 $\frac{1}{2}$ " tall  
4" off ground

84"

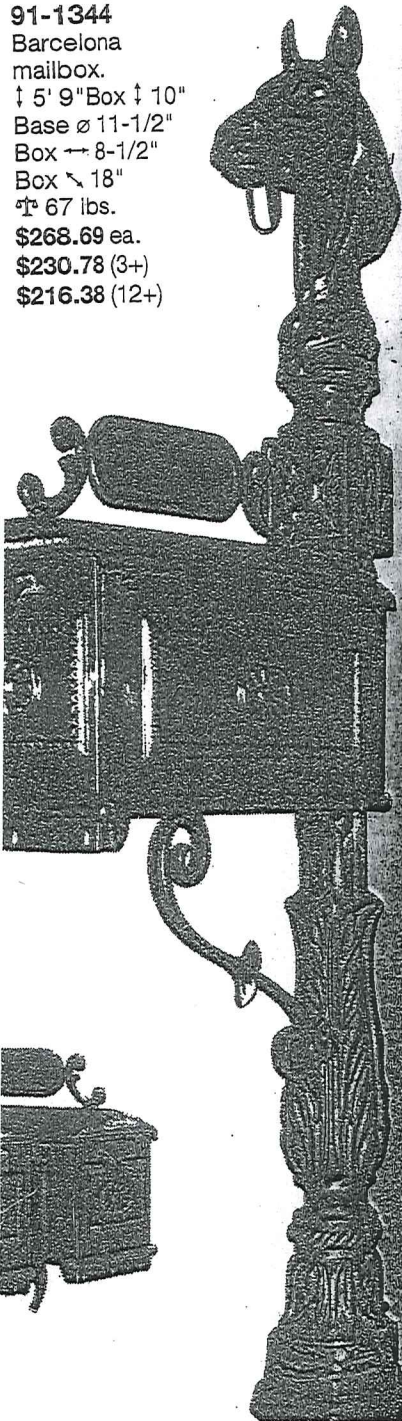






AI ALUMINUM PRODUCTS

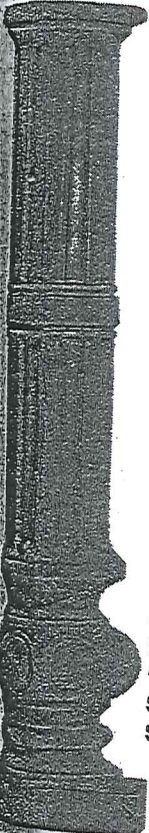
**91-1344**  
 Barcelona mailbox.  
 † 5' 9" Box † 10"  
 Base ø 11-1/2"  
 Box ↔ 8-1/2"  
 Box ↘ 18"  
 † 67 lbs.  
**\$268.69 ea.**  
**\$230.78 (3+)**  
**\$216.38 (12+)**



INNER DIMENSIONS ARE APPROXIMATE



**11-991**  
 Roman cap.  
 This post cap is cast in two pieces.  
 † 3-7/8" ↔ 5"  
 Inner ø 2-7/8" † 2 lbs.  
**\$9.99 ea. \$13.99 (10+)**

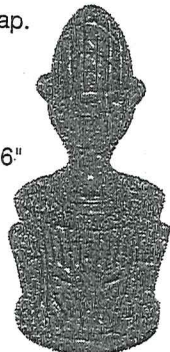


INNER DIMENSIONS ARE APPROXIMATE

**11-990**  
 Roman post.  
 Cast in two pieces. † 26-3/4" ↔ 7-1/2"  
 inner ø 2-7/8"  
 † 11 lbs.  
**\$62.19 ea.**  
**\$59.88 (10+)**

INNER DIMENSIONS ARE APPROXIMATE

**11-657-T**  
 Corinthian cap.  
 Cast in one piece.  
 † 6-3/4"  
 ↔ 3-1/4"  
 Inner ø 2-7/16"  
 † 1 lb.  
**\$5.46 ea.**  
**\$5.08 (25+)**



BOTH MATCH 11-996 & 11-999

INNER DIMENSIONS ARE APPROXIMATE



**11-998**  
 Corinthian cap.  
 Cast in two pieces.  
 † 4-3/4" ↔ 5-3/8"  
 Inner ø 2-3/8" † 1.00 lbs.  
**\$6.68 ea. \$6.02 (10+)**

SEE PAGE 596 FOR FORGED MAILBOXES

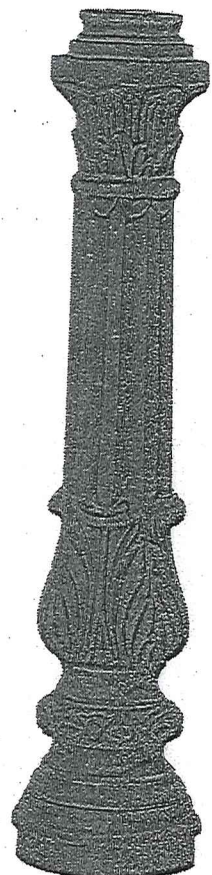
INNER DIMENSIONS ARE APPROXIMATE

**11-996**  
 Corinthian post.  
 Cast in one piece.  
 † 26" ↔ 6-1/2"  
 Inner ø 2-1/2"  
 † 9 lbs.  
**\$56.49 ea.**



INNER DIMENSIONS ARE APPROXIMATE

**11-999**  
 Corinthian post.  
 Cast in one piece.  
 † 27-5/8" ↔ 6-1/2"  
 Inner ø 2-1/2"  
 † 10 lbs.  
**\$45.49 ea.**  
**\$42.29 (10+)**



Visit us for