

## Summary of Updates to Proposed Wards and Polling Place

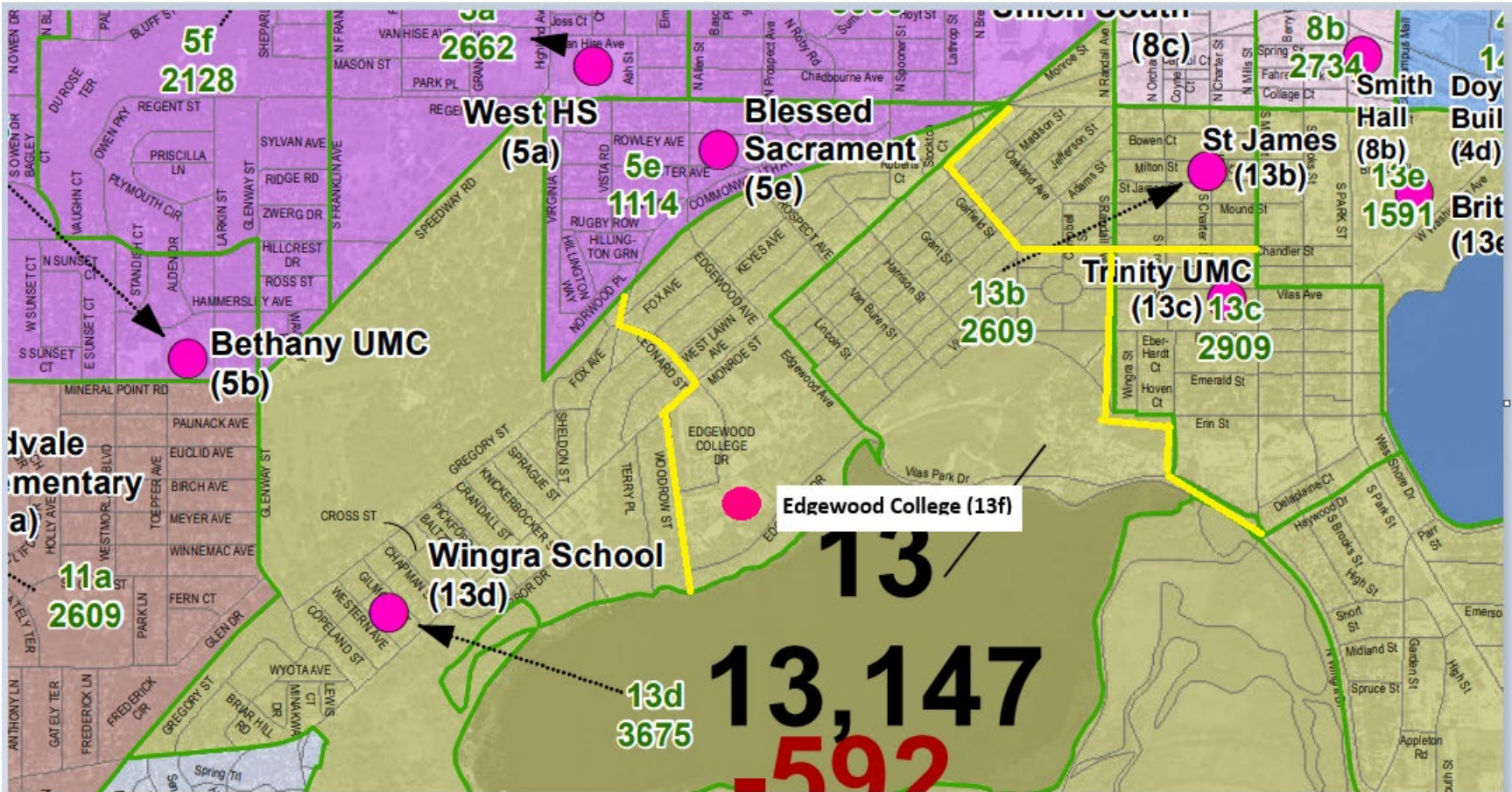
### Ad Hoc Redistricting Committee 10/7/2021

#### West

- Shifted boundary of Ward 1f east to Pleasant View Rd to maintain a consistent ward boundary north to south through both Districts 9 and 1.

#### Central/South

- **Staff requests Committee's input:** Consider reconfiguring Wards 13b, 13c and 13d into four wards to balance out this high-turnout, high-population area, particularly in the Dudgeon-Monroe neighborhood, and incorporate more walkable polling places. Below screenshot is recommendation from staff, with the addition of Edgewood College – Rennebohm Library as the fourth polling place. New populations would be:
  - 13d 2128 @ Wingra School
  - 13f (NEW) 2649 @ Edgewood College
  - 13b 2475 @ St. James
  - 13c 1941 @ Trinity



### Downtown

- Staff created a close-up map of the downtown wards and polling places.
- 4d was split into 4d and 4f to accommodate increased high-density development and redevelopment. 4d (1417 people) will vote at Doyle Administration Building, and 4f (2326 people) will vote at Madison Senior Center along with 2b.
- Clerk's Office is currently working with UW to secure additional polling places on campus with the goal to have single wards at polling places, especially for high-turnout elections.

### Isthmus/Near East

- Ward 12e: Staff spoke with Alder Abbas and decided to keep ward 12e at Tenney Park Pavilion, since majority of residents have been voting there for years and it is walkable.
- Ward 15d was split into 15d and 15f to account for recent and future development near Pinney Library and potential development north of Milwaukee St in this high-turnout area. 15d will vote at Pinney Library and 15f at Lussier East YMCA.

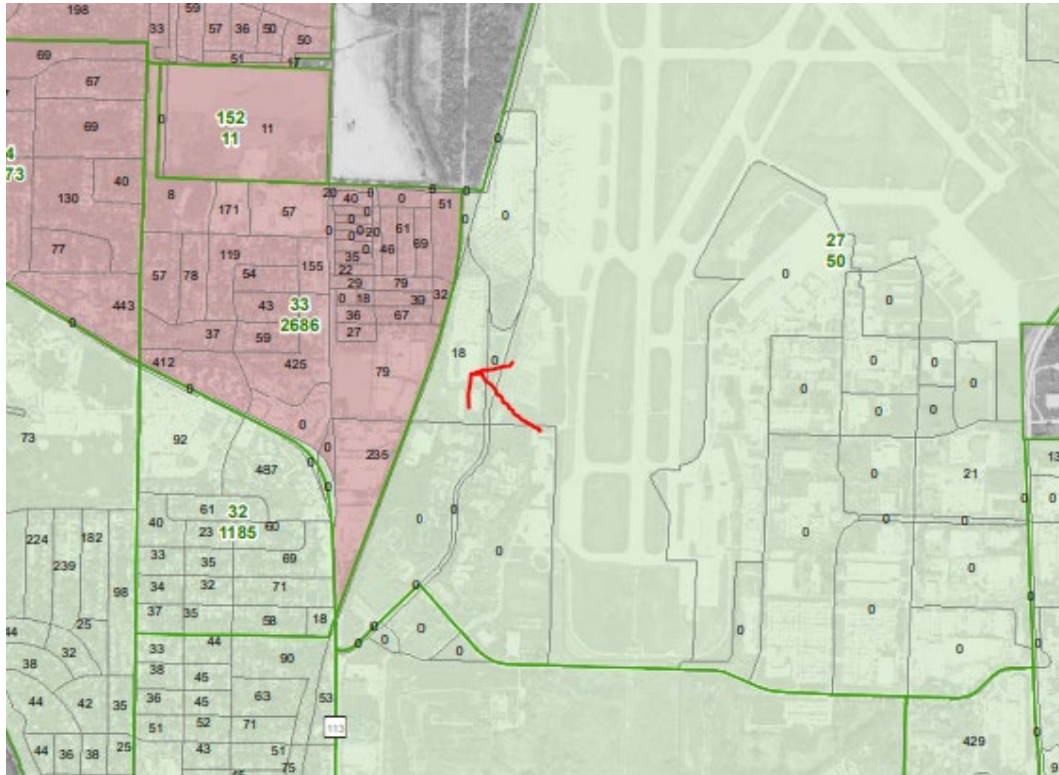
### East

- Extended 16e south to Hwy. 12-18 to spread out future growth between 16e and 16f.
- Assigned 16a and 16b to separate polling places, with the goal of single ward polling places. 16a will vote at Our Saviour's Lutheran Church and 16b at Elvejhem Elementary.

### North

- Split 18b into 18g and 18b to reduce population and preserve existing ward 18b (currently ward 34). 18b will vote at Warner Park and 18g will vote at Black Hawk Middle School. Clerk's Office is currently seeking an additional polling place for 18g so we do not need to double up at Black Hawk.
- 18d polling place updated to Lakeview Lutheran Church.

- **Staff requests Committee's Input:** Should we add the census block with 18 people west of the airport on Darwin Rd to D18? There are three dwellings here, but currently no registered voters. In the past, registered voters have voted with the remainder of the airport ward to the south and/or east.



### Miscellaneous Boundary Corrections

- Ward 19e mistakenly moved the ward line from the railroad to Old Middleton Rd. That has been corrected.
- Erroneous sliver of noncontiguous 4e has been absorbed into 3a.
- 6e/15e line adjusted to move one block back to 15e that was mistakenly included in 6e.