

Greening America's Capitals

Brittingham - Triangle Green Project

MADISON, WISCONSIN

Office of Sustainable Communities
Smart Growth Program

PROJECT AREA

STATE CAPITOL

W WASHINGTON AVE

1 east campus mall extension

REGENT ST

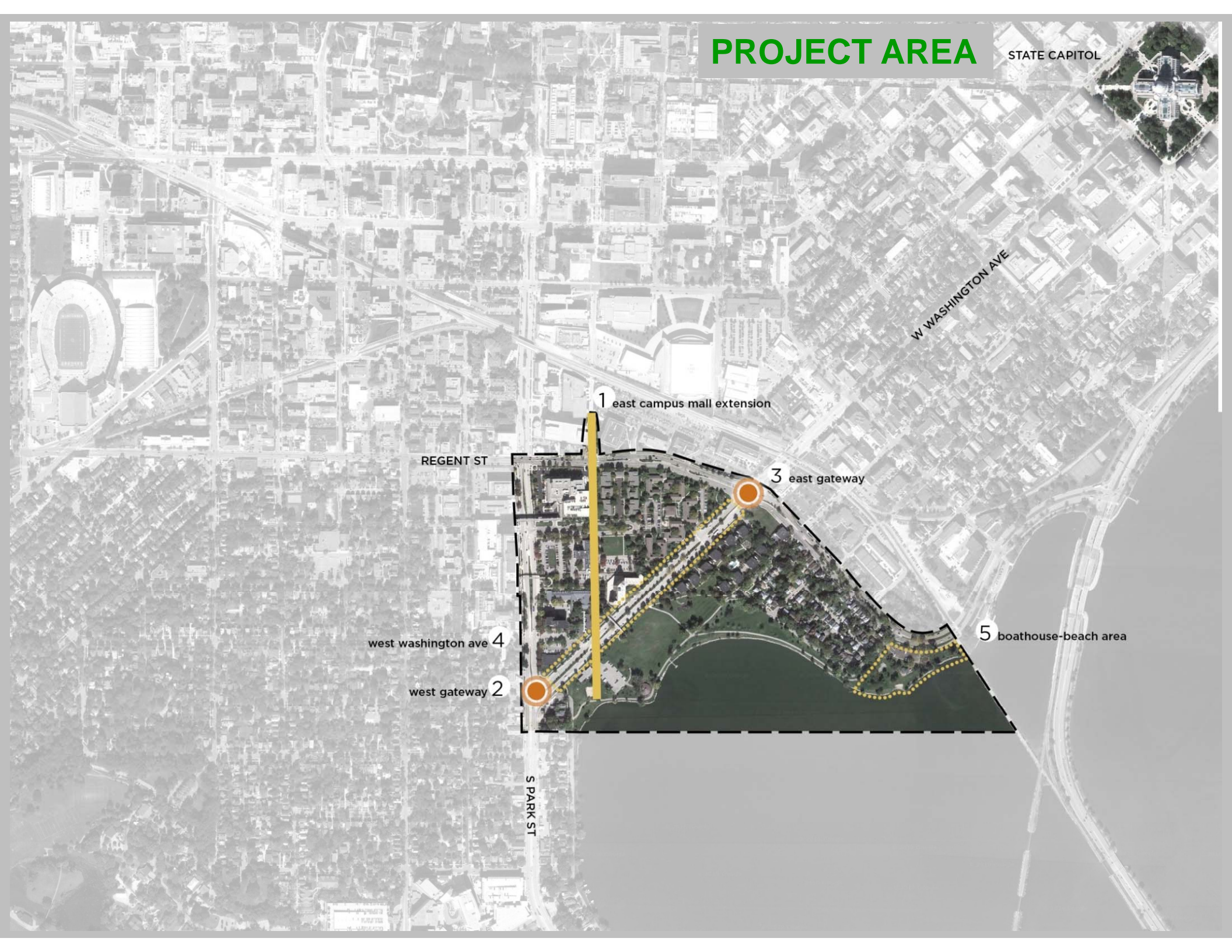
3 east gateway

west washington ave 4

5 boathouse-beach area

west gateway 2

S PARK ST



PROJECT AREA



FOCUS AREAS

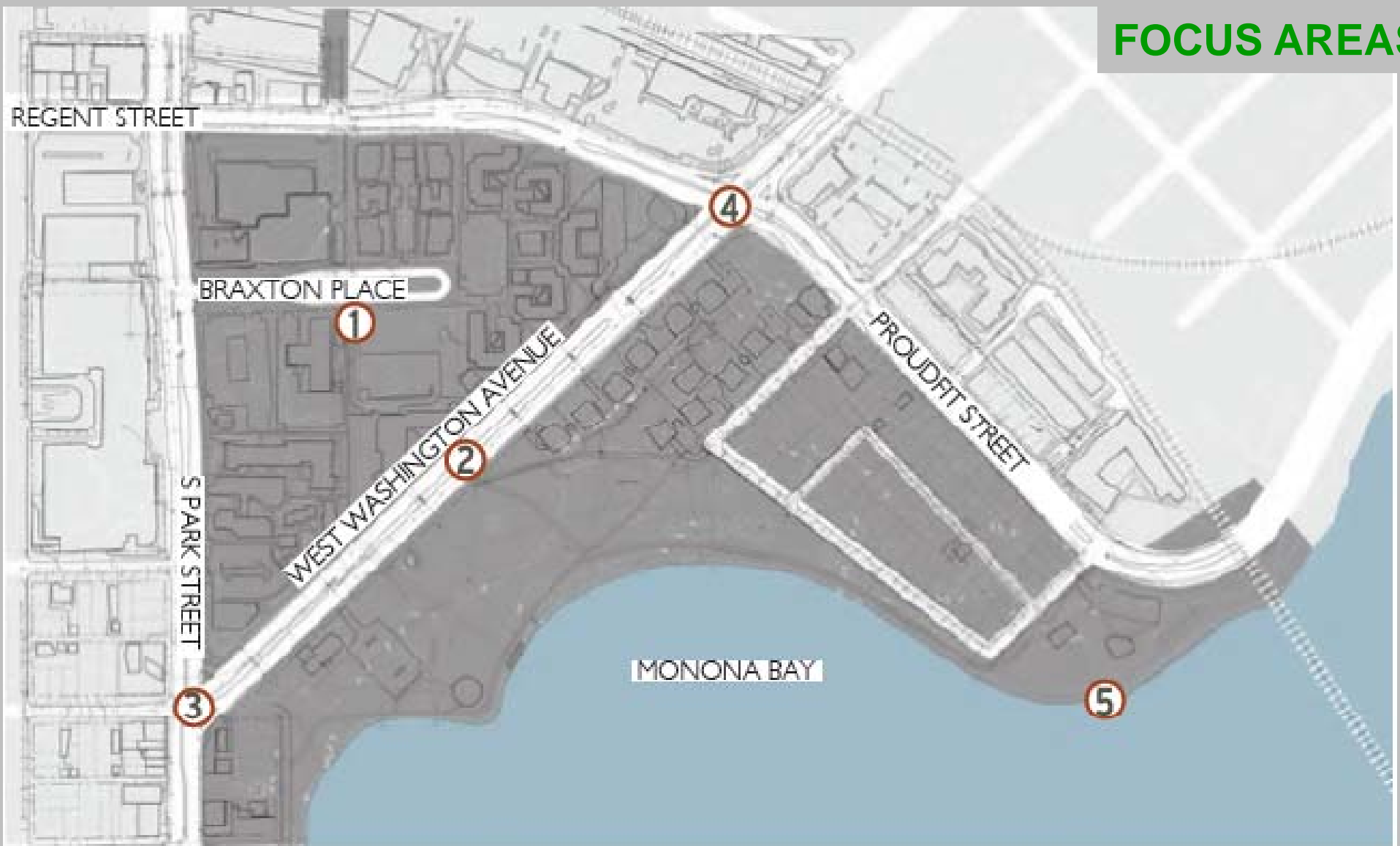
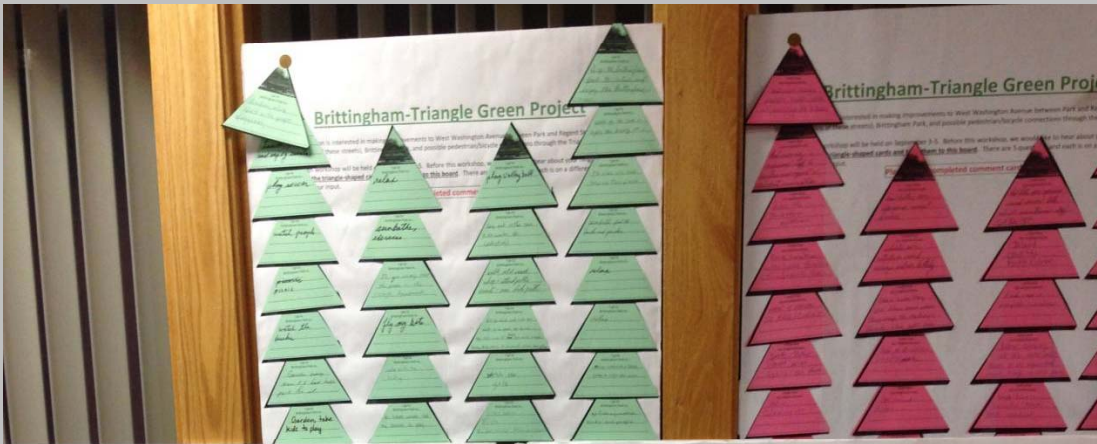


FIGURE 12 FOCUS AREAS:

1. East Campus Mall Extension
2. West Washington Avenue
3. Intersection of West Washington Avenue and South Park Street
4. Intersection of West Washington Avenue and Regent Street
5. Brittingham Bath House and Beach Area

PROCESS



FOCUS AREA 1

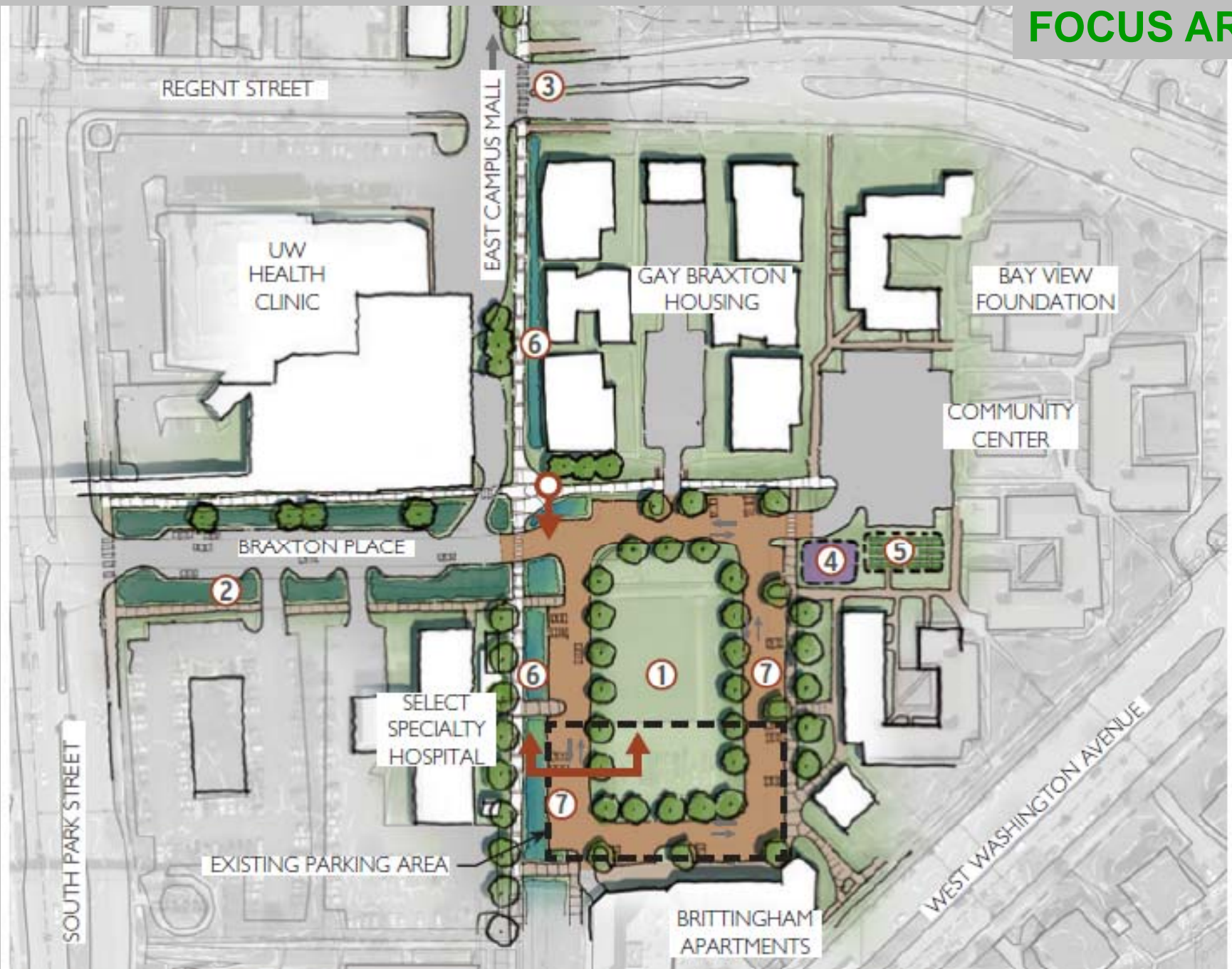


FIGURE 13

Plan view of central green and East Campus Mall extension and central green improvements. Gardening is a positive activity already happening in the neighborhood, and could be expanded near the new play equipment to accommodate additional plots for residents.

FOCUS AREA 1



FOCUS AREA 1



FIGURE 16

Section of the design concept showing bioswales at the central green next to parking paved with permeable pavement. The bioswale would protect water quality and provide a buffer between people using the mall to get to the lakes and the residents using the central green space.

FOCUS AREA 2



FIGURE 17

Design option for West Washington Avenue.

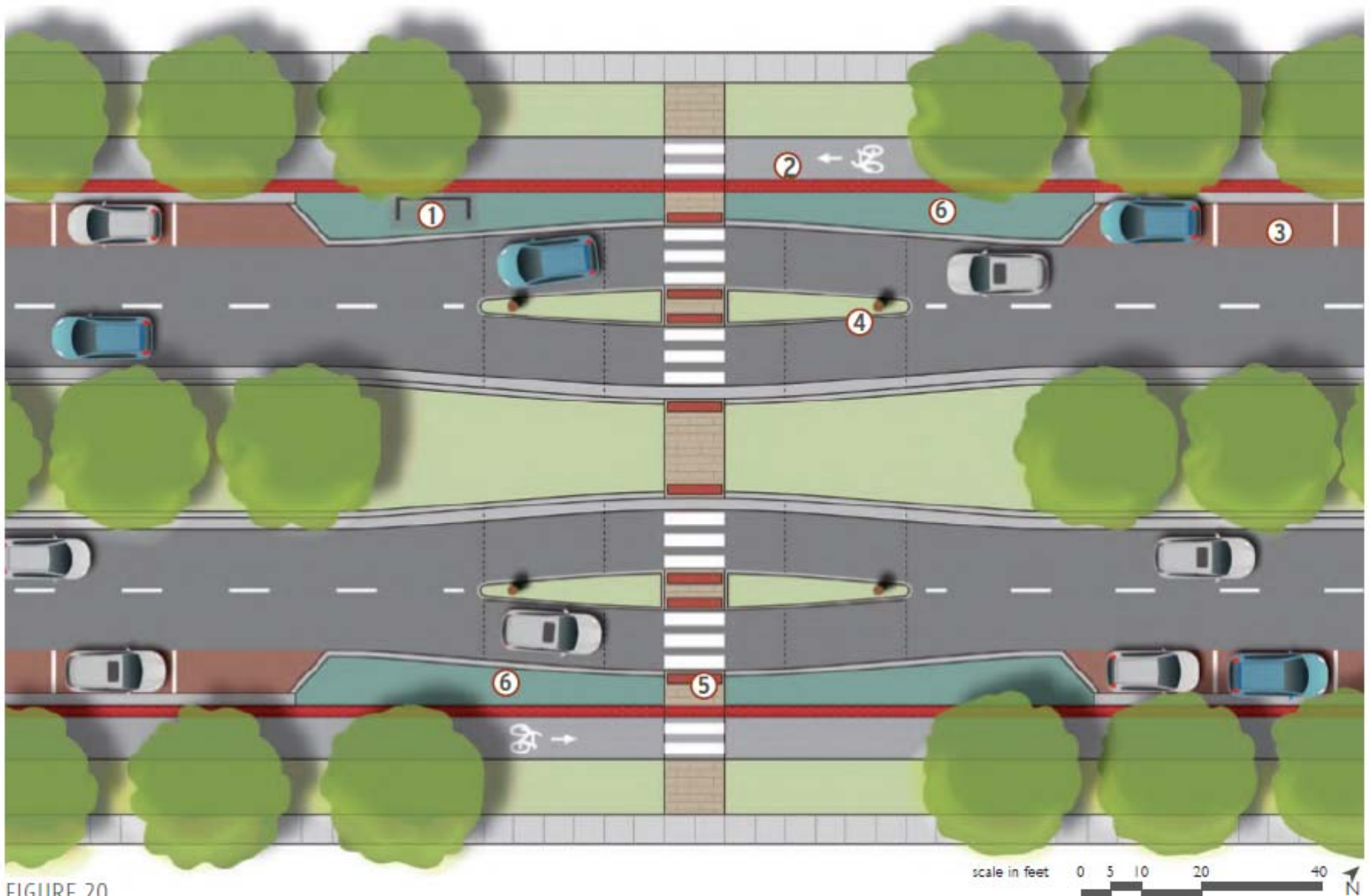


FIGURE 20

Enlarged view of the West Washington Avenue midblock crossing and refuge islands. Bollards at the nose of the islands further help protect pedestrians and give snow plows a landmark to avoid during plowing. Detectable warning pavers are a textured pavement letting pedestrians with visual or other disabilities know they are entering the roadway.



FIGURE 19

Design option view looking northeast along West Washington Avenue toward the capitol building. The midblock crossing creates a safe refuge for pedestrians in the central median, as well as the pedestrian refuge island added in the laneways in each direction. A covered bus stop shelters transit users. Clearly delineating paths for cyclists and pedestrians will help limit conflict between them. Enhanced landscaping in these areas will help create the perception of comfort for pedestrians and improve the visual aesthetics of the road.



FIGURE 23

Design concept for the intersection of West Washington Avenue and South Park Street.



FIGURE 25
View of design option looking northeast along West Washington Avenue from South Park Street toward the capitol building. Bump-outs and landscaping help delineate the bike lanes and provide a safer crossing for pedestrians. Public art could help make this intersection a gateway into the capitol.

FOCUS AREA 4



FIGURE 26

Design option of the intersection of West Washington Avenue and Regent/Proudfit streets.



FIGURE 28

Design option view looking east along Regent Street to the intersection of West Washington Avenue and Regent/Proudfit streets. The community garden and stone wall can create a sense of community. The roundabout could provide a visual gateway to the capitol while capturing and treating stormwater runoff.

FOCUS AREA 5



FIGURE 29

Design option of new park amenities and structures, including rain gardens, safer crossing of Proudfit Street, more seating at the water's edge, and a warming feature.



FIGURE 31

Design option view looking northeast to the Brittingham bath house and beach. Creating warming spots (such as outdoor gas heaters with seating) and winter concessions such as ice-fishing supplies or ice skating rentals could encourage year-round activity. The renovated bath house could include environmentally sustainable features such as photovoltaics and recycled materials.

Greening America's Capitals

Brittingham - Triangle Green Project

MADISON, WISCONSIN

Office of Sustainable Communities
Smart Growth Program