



Warner Park & Cherokee Marsh Watershed Study Solutions

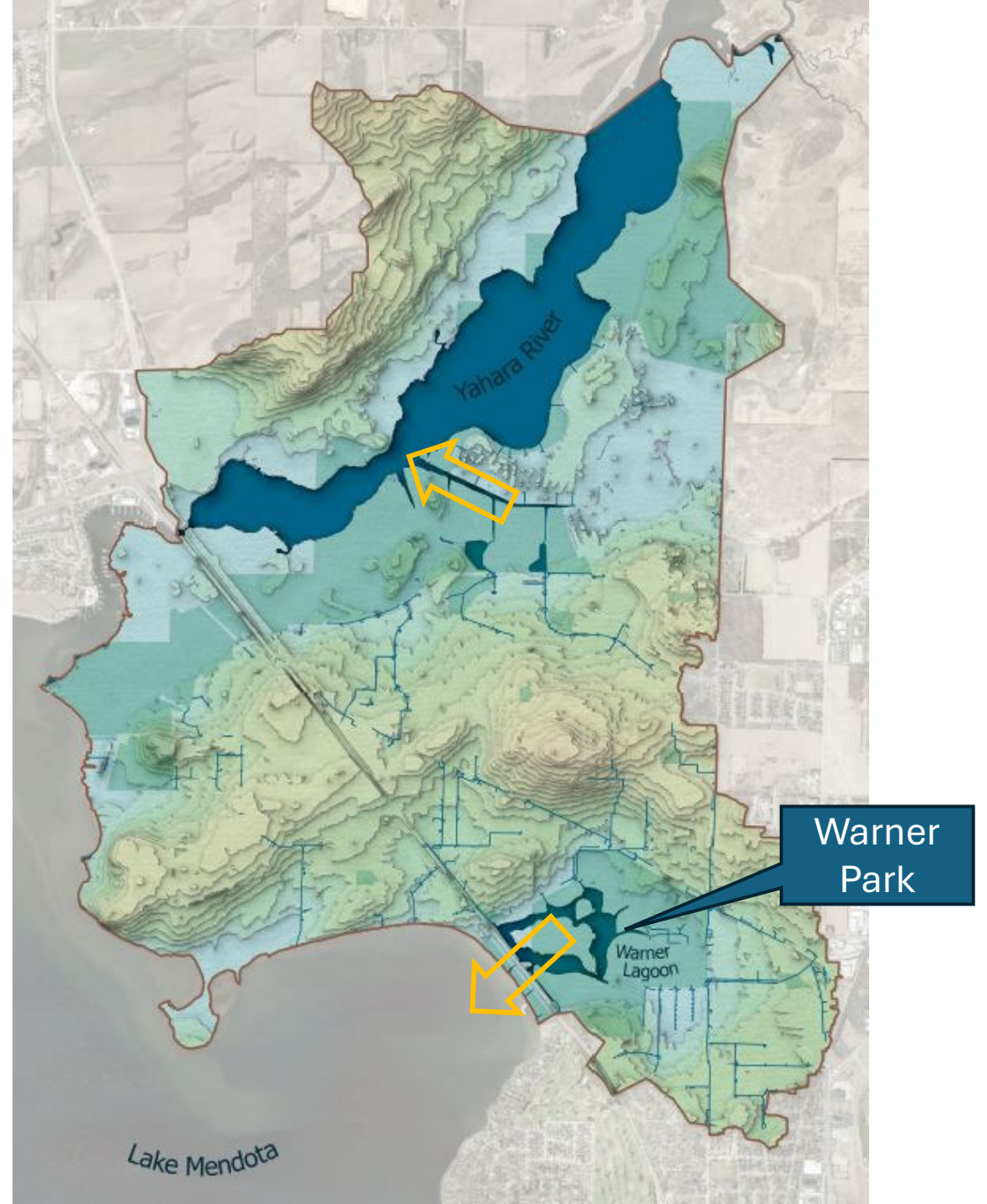
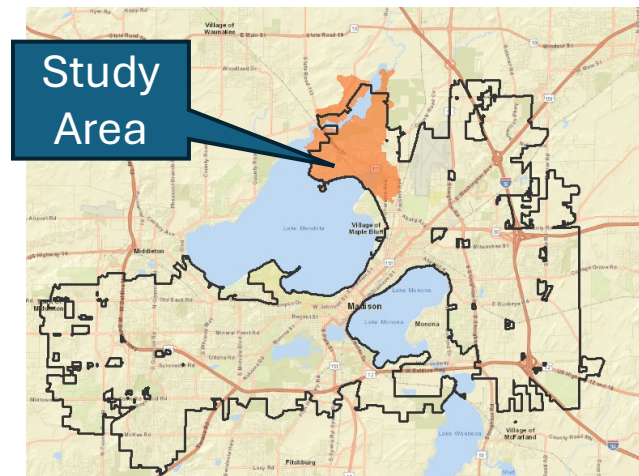
City of Madison Engineering Division
Board of Park Commissioners Meeting
4/15/26

[LINK TO FINAL REPORT](#)

(Or can be found on project webpage: www.cityofmadison.com/WarnerCherokeeWatershed)

Warner Park and Cherokee Marsh Watershed

- Watershed study has completed the final phase of public input has finalized report.
- No changes to proposed solutions since we brought study to BPC for initial feedback on 7/9/25.



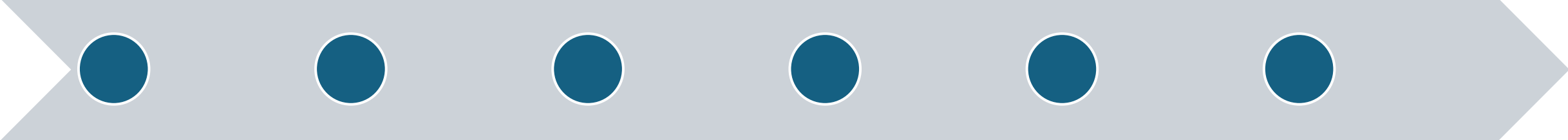
Schedule

Spring 2023 -
Spring 2024

*Create and
Calibrate
Model – 1st
Public Meeting*

Fall 2024
*2nd Public
Meeting**

Fall 2025
*3rd Public
Meeting*



Summer 2024
*Identify Flood
Impacts*

Fall 2024 –
Summer 2025
*Evaluate
Solutions*

Winter-Spring
2026
*Public
Comment
Period*



Finalize Study

Input on Proposed Solutions

- Public generally supportive during public meeting
- No public comments received during 30-day public comment period

→ Solutions have not changed since last BPC informational presentation (7/9/25)

Watershed Study Performance Targets

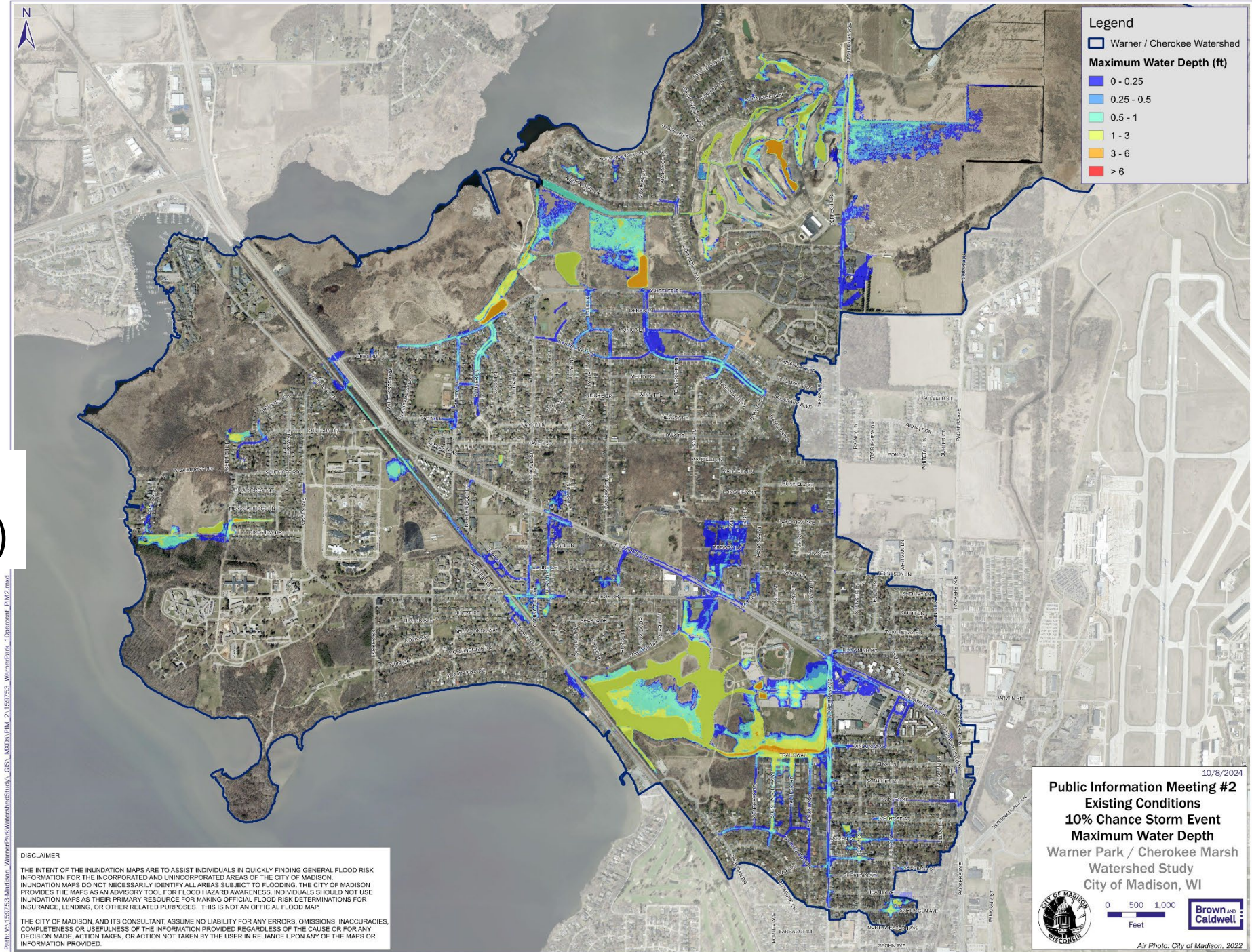
- 10% Event (*4.09" rain/24 hours*).
 - No surcharging of storm sewer onto roadway (storm sewer pipes are sized to carry storm)
- 4% Event (*5.01" rain/24 hours*)
 - Roads passable for emergency vehicles
- 1% Event (*6.66" rain/24 hours*)
 - No structure (home/building) flooding
 - No greenway crossing overflow
 - Safe overflow from enclosed depressions
- 0.2% Chance Event (*8.81" rain/24 hours*)
 - Safe conveyance of overflow



Tenney Park, Madison, WI

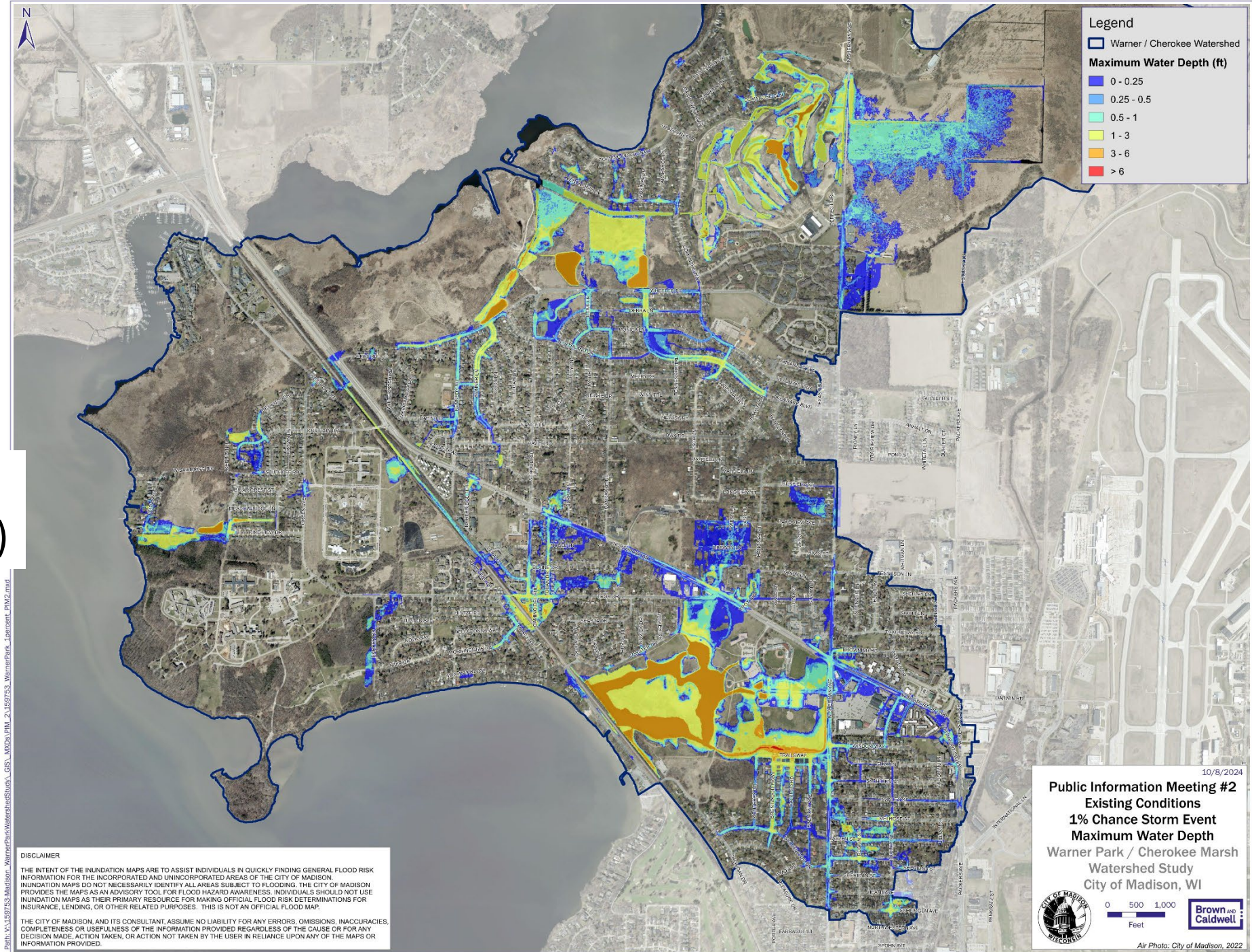
Existing Conditions Inundation Mapping

10% Chance Event
(4.09 inches in 24 hours)



Existing Conditions Inundation Mapping

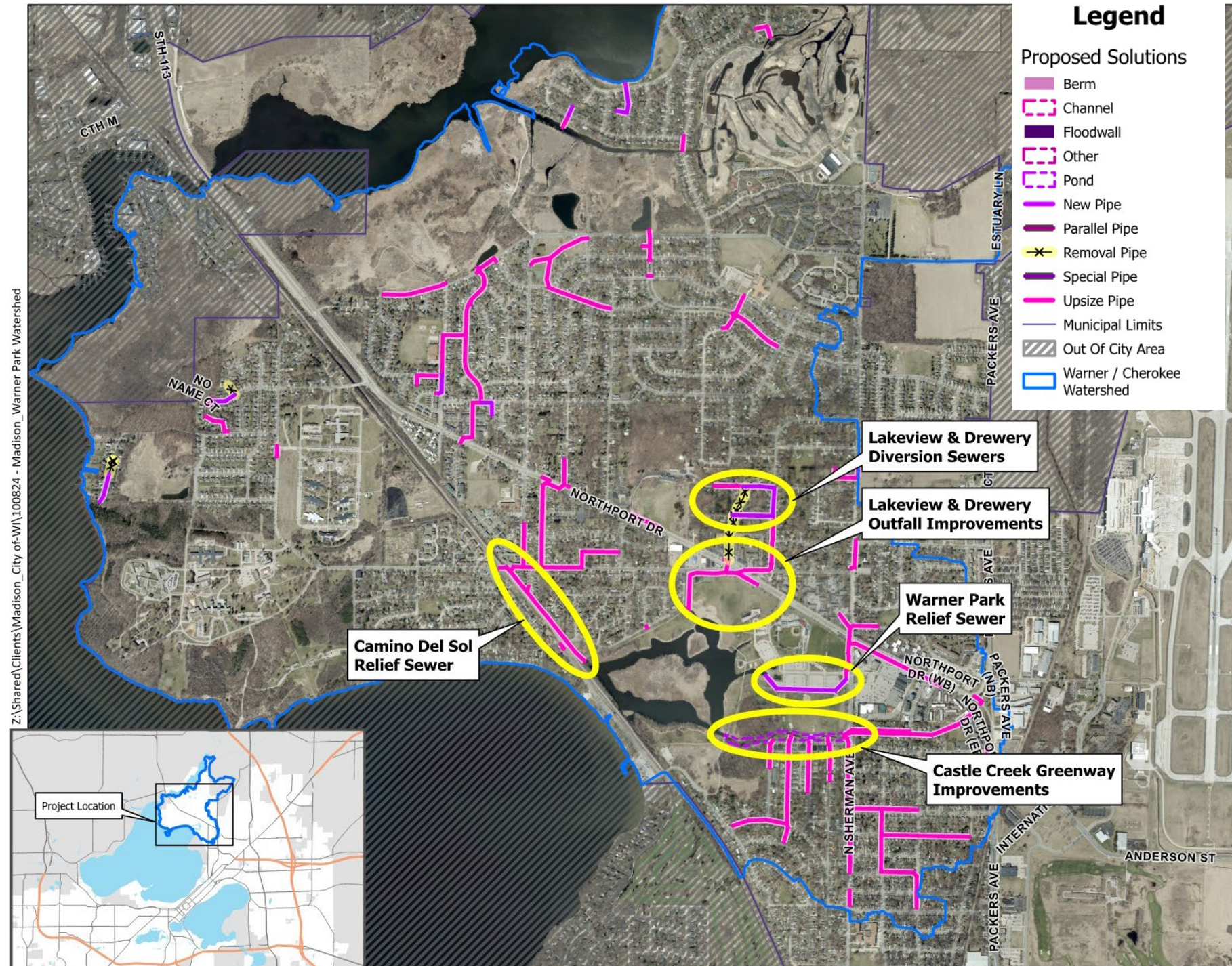
1% Chance Event
(6.66 inches in 24 hours)



Path: V:\159753_Madison_WarnerParkWatershedStudy_GIS_MXD\PM_2_159753_WarnerPark_Percent_PW2.mxd

Proposed Solutions

- Local storm sewer improvements
- Castle Creek Greenway Improvements
- Warner Park Relief Sewer
- Camino Del Sol Relief Sewer
- Lake View & Drewery Diversion Sewers



Lake View Diversion Downstream Sewer

- Divert main stormwater routes into ROW. Continue improvements downstream
- Convey added flow & mitigate existing flooding
- Proposed sewer in Park shown in same location as existing 48" pipe
 - Will consider other alignments outside of Warner Park during design

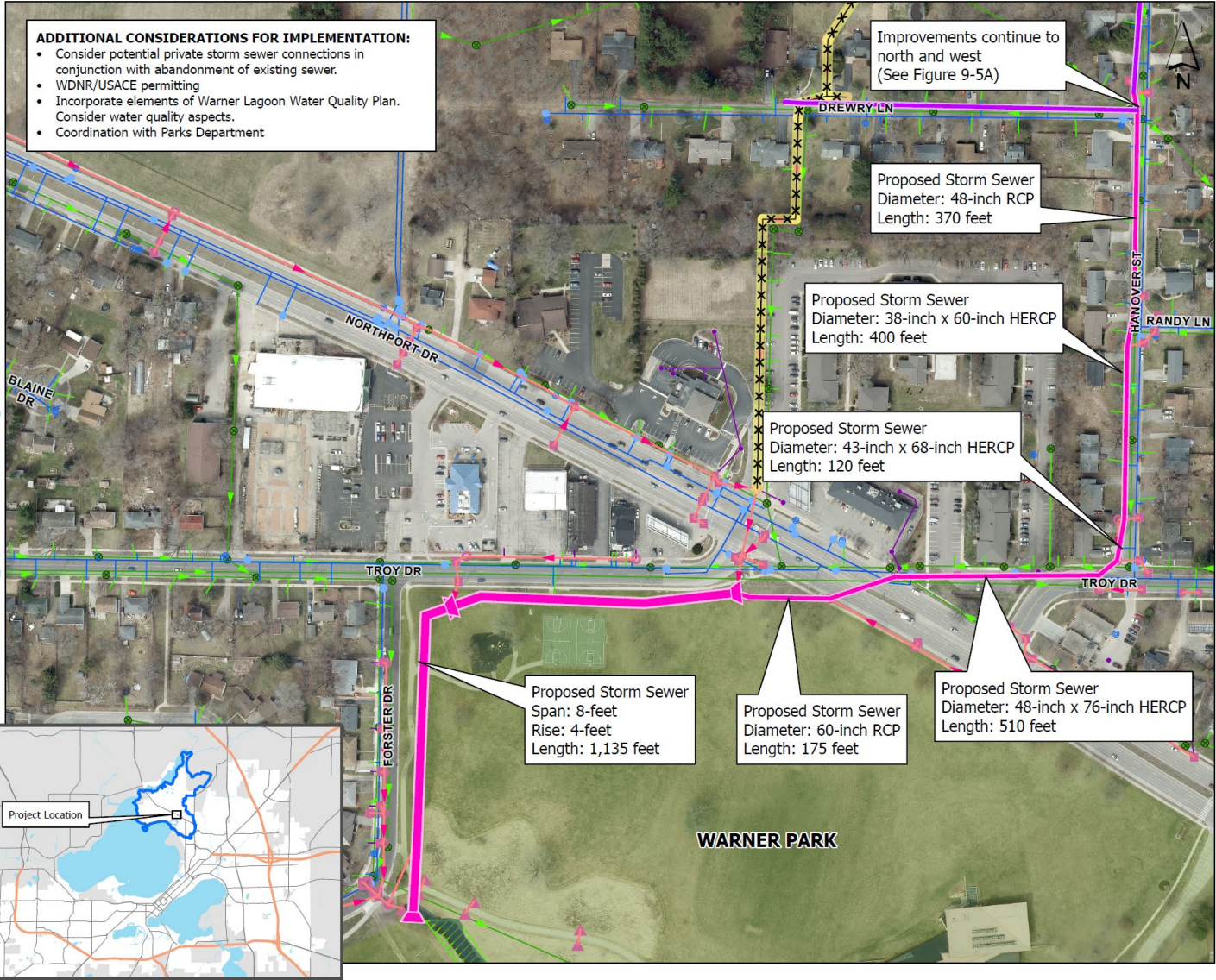


Figure 9-5B
Lake View Diversion
Downstream Sewers
 Project Details
 Warner / Cherokee Watershed
 City of Madison



0 60 120 240 Feet

Camino Del Sol Relief Sewer

- Enlarge existing storm sewer from Troy Drive to Warner Lagoon
- Reduce flooding in Camino Del Sol cul-de-sac, Troy Dr, & surrounding streets
- Proposed sewer shown in same location as existing 48" pipe
 - Sewer would be routed to reduce tree and park impacts during design

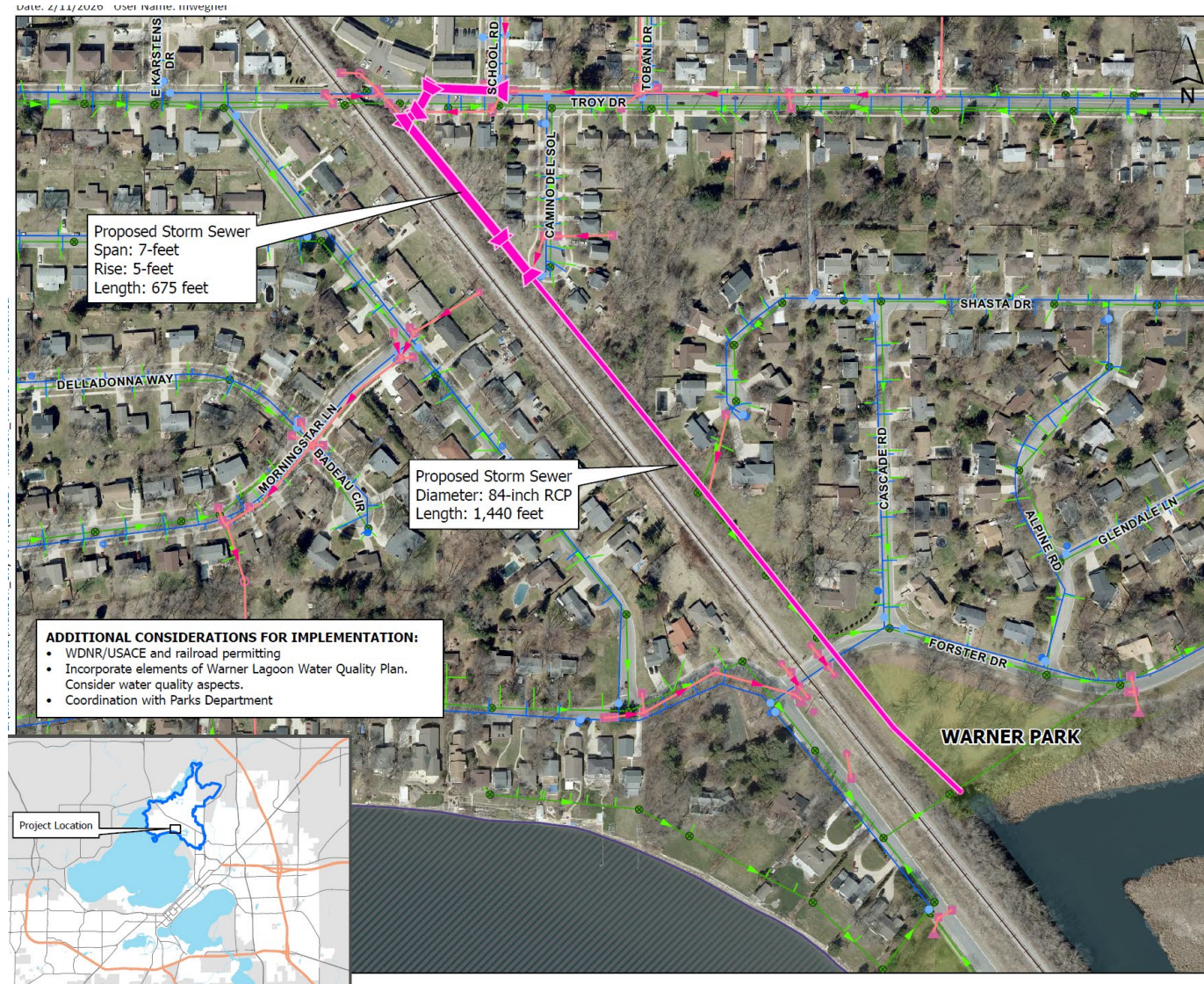
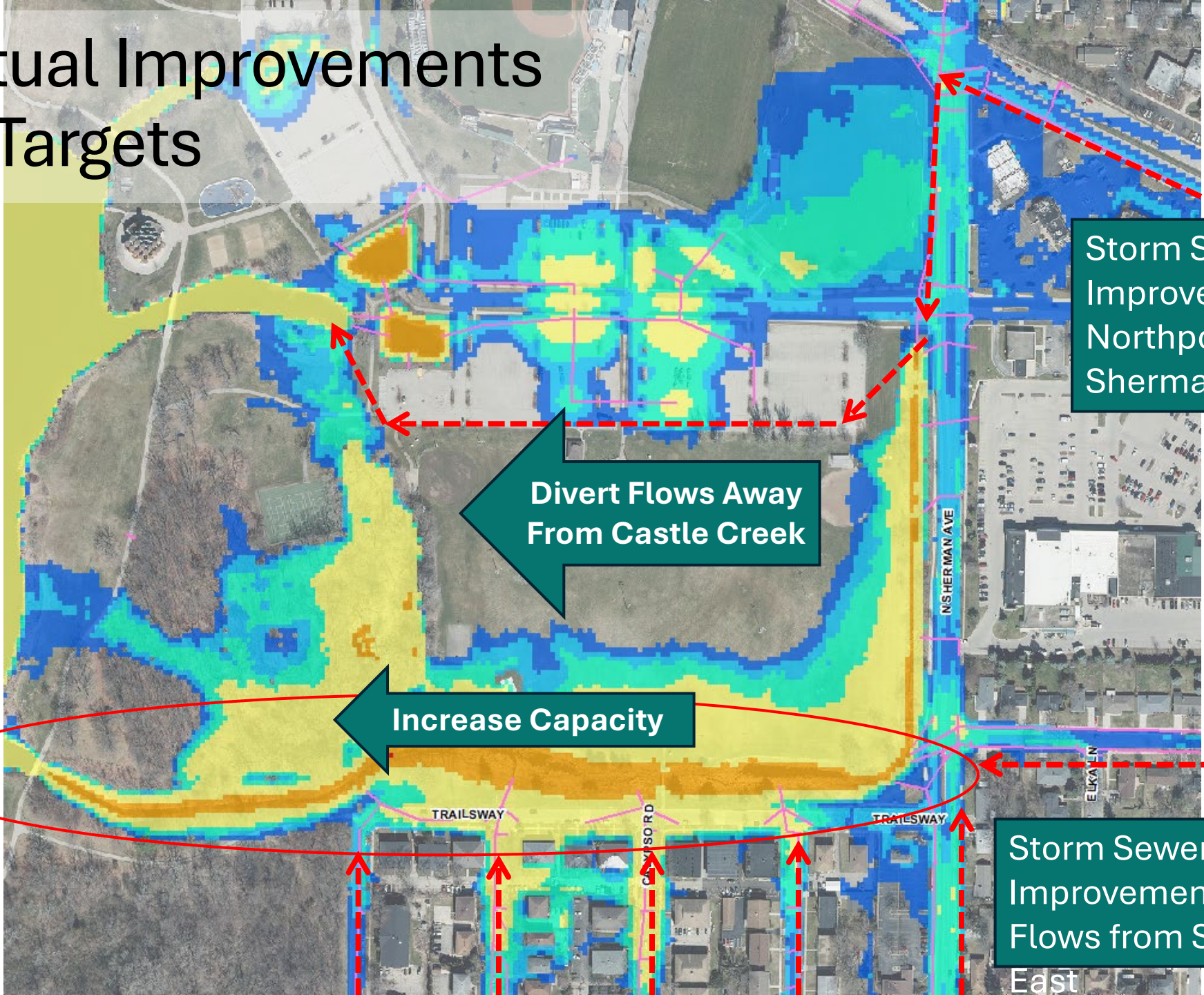


Figure 9-4
Camino Del Sol Storm Sewer Improvements
Project Details
Warner / Cherokee Watershed
City of Madison



0 70 140 280 Feet

Conceptual Improvements to Meet Targets



Storm Sewer Improvements on Northport and N Sherman Ave

Divert Flows Away From Castle Creek

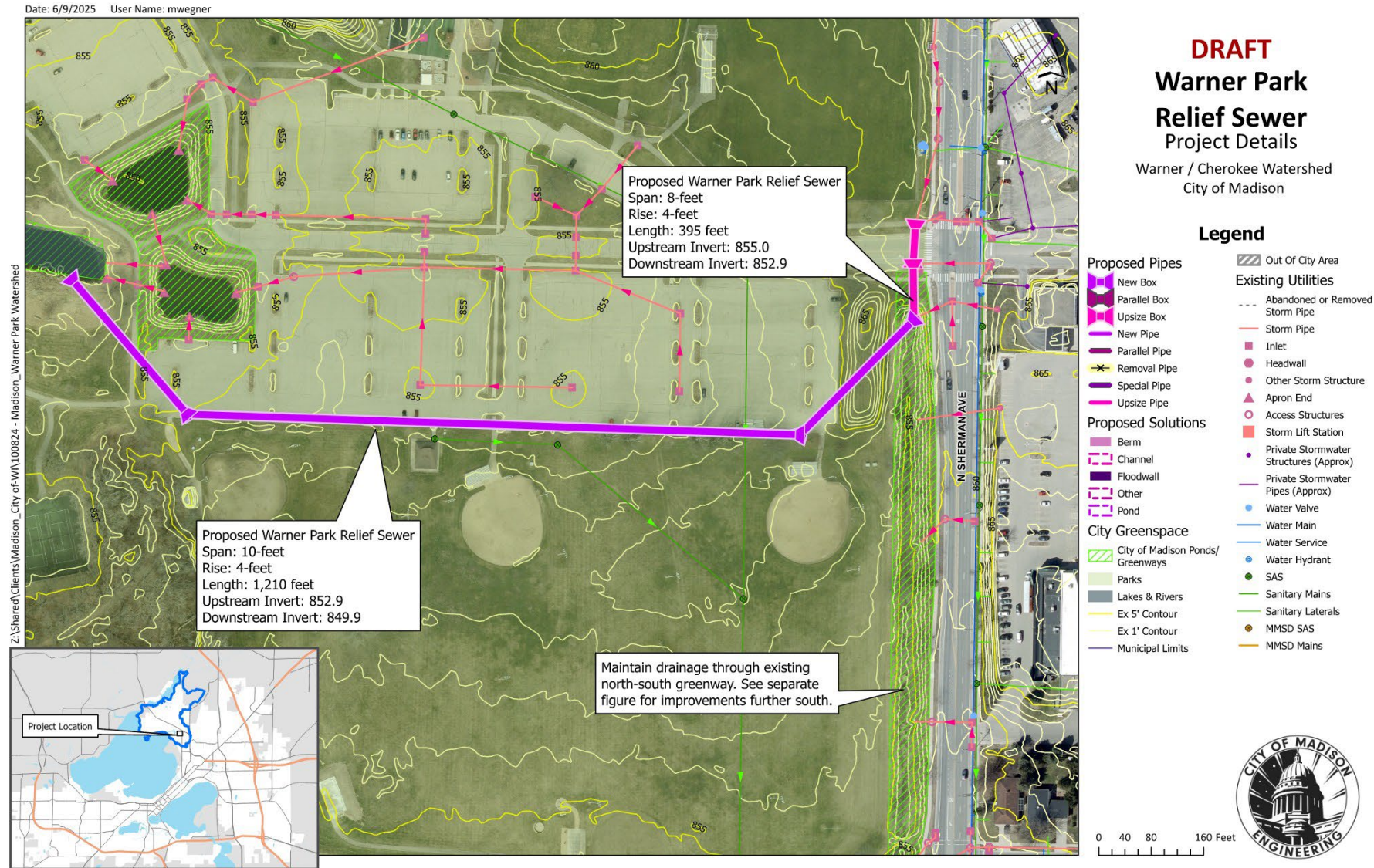
Increase Capacity

Storm Sewer Improvements Increasing Flows from South and East

| | |
|-------------------------------------|----------------|
| <input checked="" type="checkbox"/> | 10% Chance |
| | Max Depth (ft) |
| Blue | 0 - 0.25 |
| Light Blue | 0.25 - 0.5 |
| Light Green | 0.5 - 1 |
| Yellow | 1 - 3 |
| Orange | 3 - 6 |
| Red | > 6 |

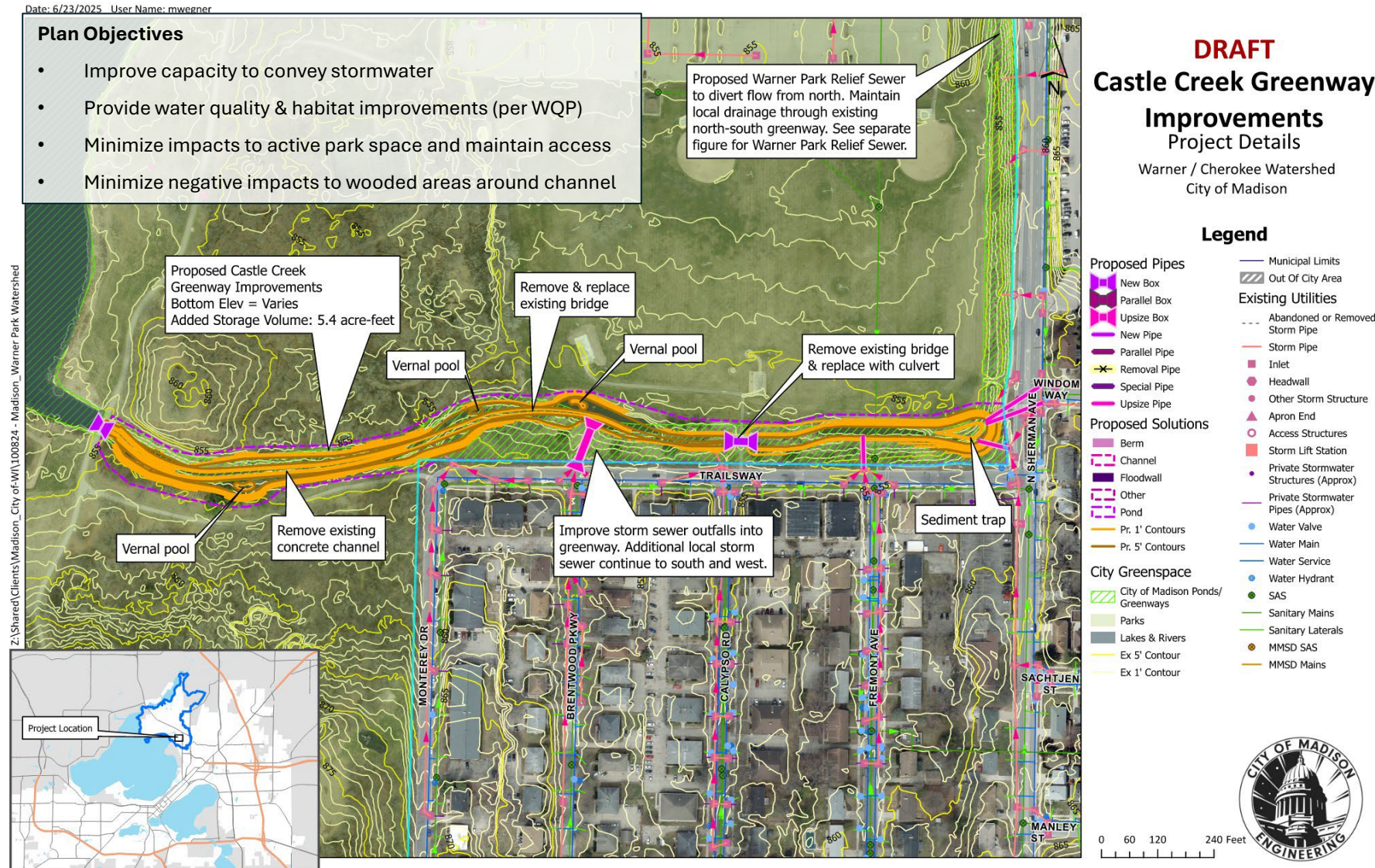
Warner Park Relief Sewer

- Divert runoff from north of park entrance into new relief sewer to Warner Lagoon
- Exact location determined during design to minimize Park impacts
- Reduce flow reaching Castle Creek Greenway (to south)



Castle Creek Greenway Improvements

- Re-grade greenway to create deeper channel within existing corridor
 - Add floodplain and vernal pools for improved habitat
- Replace existing bridges
- Reduce flooding along Trailsway and adjacent streets
- Incorporates concepts from the approved Warner Lagoon Water Quality Plan (2021)



Questions on the Watershed Study?

(will dive into more Castle Creek Greenway information next)