

Madison, Wisconsin

CITY OF MADISON

CITY ENGINEERING DIVISION

DEPARTMENT OF PUBLIC WORKS

PLAN OF PROPOSED IMPROVEMENT

MINERAL POINT LANDFILL

2022 LANDFILL GAS CONSTRUCTION

INDEX OF SHEETS

SHEET NO. 1	TITLE SHEET
SHEET NO. 2	EROSION CONTROL
SHEET NO. 3	PROJECT OVERVIEW
SHEET NO. D1-D4	DETAILS

PUBLIC IMPROVEMENT PROJECT APPROVED

XXXX XX, 2022

BY THE BOARD OF PUBLIC WORKS OF MADISON, WISCONSIN

PUBLIC IMPROVEMENT DESIGN APPROVED BY:

ASST. CITY ENGINEER Date

CITY PROJECT NO. 14296
CONTRACT NO. XXX

PROJECT LOCATION



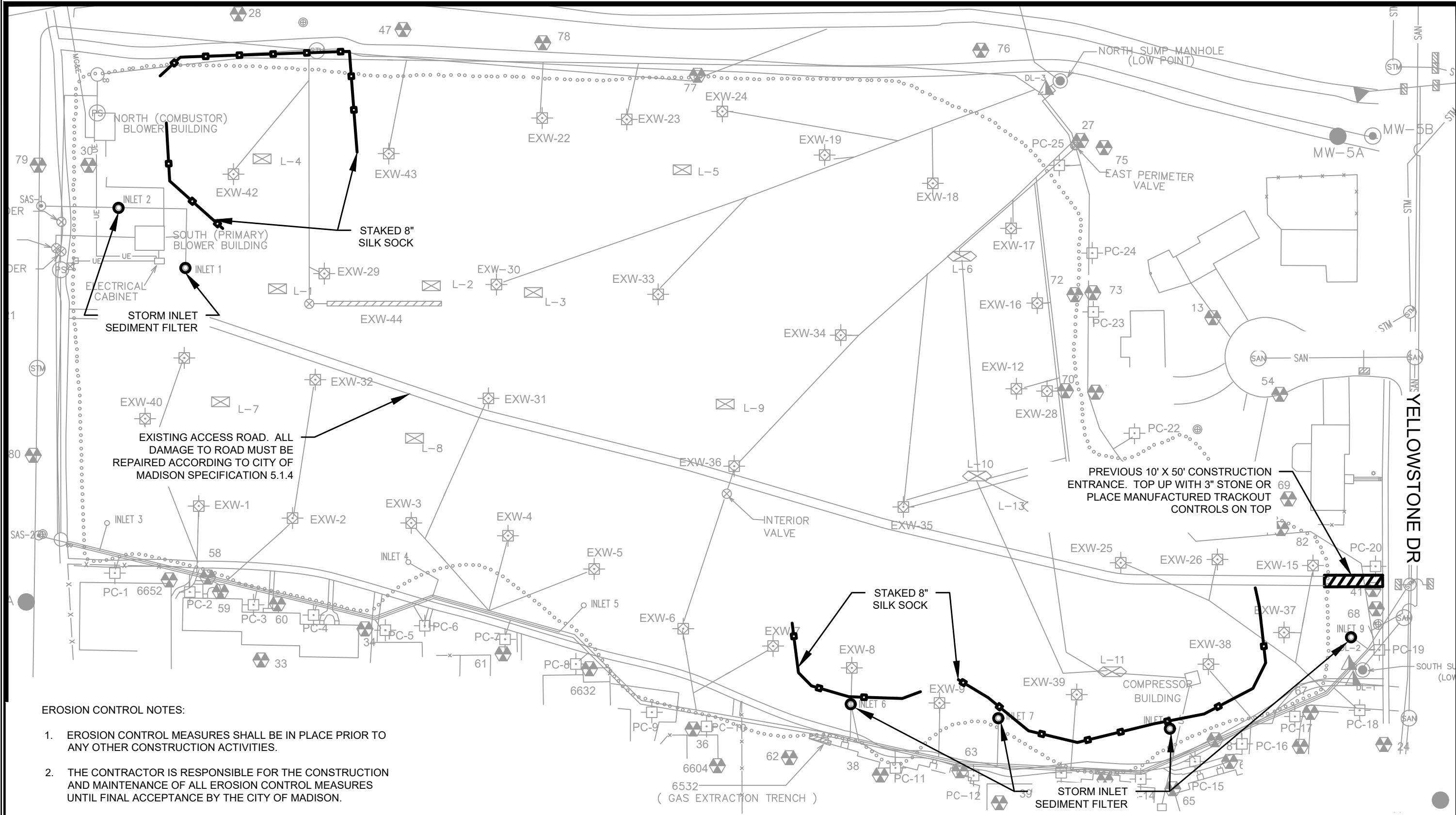
LANDFILL GAS DESIGN APPROVED BY:

PLOT SCALE: 1:1_XREF

PLOT NAME: ----

REV. DATE: 6/15/2022 3:40 PM

ORIGINATOR: CITY_OF_MADISON



EROSION CONTROL NOTES:

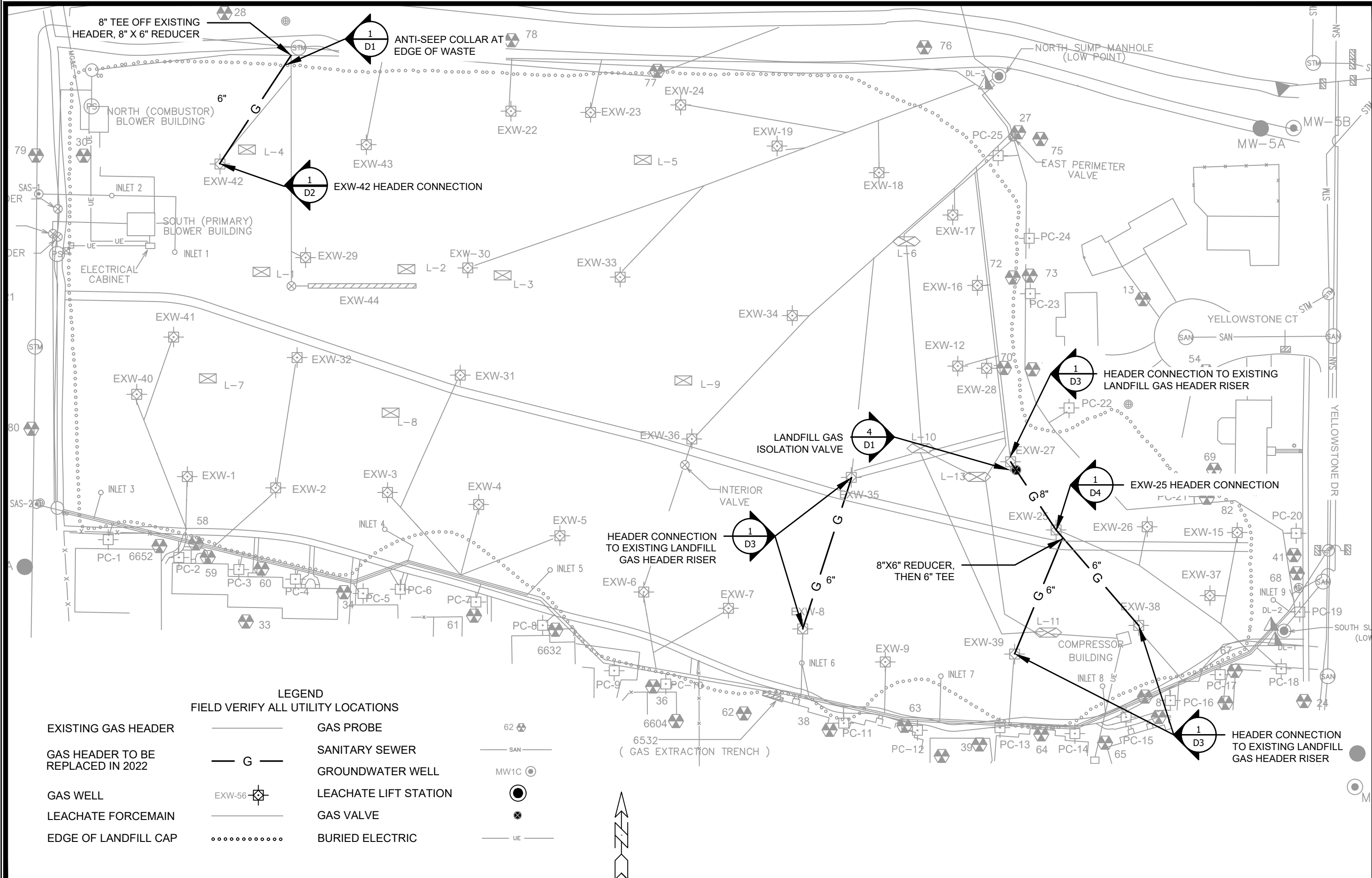
1. EROSION CONTROL MEASURES SHALL BE IN PLACE PRIOR TO ANY OTHER CONSTRUCTION ACTIVITIES.
2. THE CONTRACTOR IS RESPONSIBLE FOR THE CONSTRUCTION AND MAINTENANCE OF ALL EROSION CONTROL MEASURES UNTIL FINAL ACCEPTANCE BY THE CITY OF MADISON.
3. VEHICLES SHALL MINIMIZE MOVEMENTS ON-SITE AFTER RAIN EVENTS, MECHANICALLY REMOVE DEBRIS FROM TIRES PRIOR TO LEAVING SITE, SWEEP DEBRIS FROM ROW WHEN TRACKING IS VISIBLE. TRACKOUT PAD MAY BE ONE FOOT OF 3" CLEAR STONE OVER PREVIOUS SITE TRACKING PAD. MANUFACTURED TRACKOUT CONTROLS ARE AN ACCEPTABLE ALTERNATIVE. CONSIDER ROUTING ENTERING TRAFFIC AWAY FROM TRACKOUT CONTROL PAD TO MINIMIZE FAILURE.

LEGEND
FIELD VERIFY ALL UTILITY LOCATIONS

STAKED 8" SILT SOCK	
36" DIA. CIRCULAR INLET NEEDING SEDIMENT FILTER	
CONSTRUCTION ENTRANCE	




14296	MADISON, DANE, WI	CONTRACT NO: X	14296	2
<p>EROSION CONTROL</p> <p>2022 MINERAL POINT LANDFILL GAS CONSTRUCTION</p> <p>M:\DESIGN\LANDFILL\Mineral Point\2022 CONSTRUCTION\2022 Construction.dwg</p>				
14296	MADISON, DANE, WI	CONTRACT NO: X	14296	2

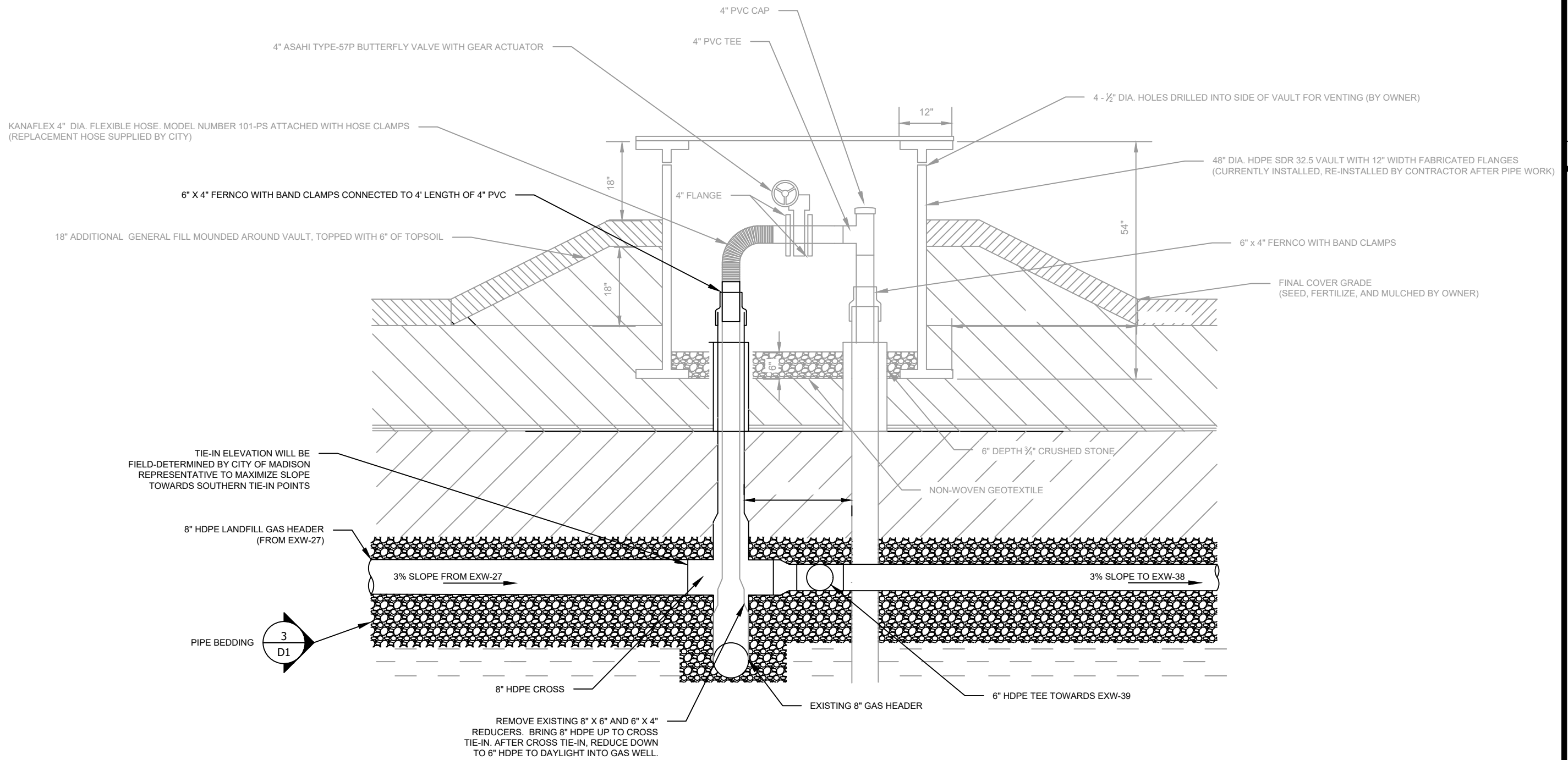


LEGEND
FIELD VERIFY ALL UTILITY LOCATIONS

- | | | | |
|-----------------------------------|--------|-----------------------|---------|
| EXISTING GAS HEADER | ————— | GAS PROBE | 62 |
| GAS HEADER TO BE REPLACED IN 2022 | — G — | SANITARY SEWER | — SAN — |
| GAS WELL | EXW-56 | GROUNDWATER WELL | MW1C |
| LEACHATE FORCEMAIN | ————— | LEACHATE LIFT STATION | ● |
| EDGE OF LANDFILL CAP | | GAS VALVE | ⊗ |
| | | BURIED ELECTRIC | — UE — |



PROJECT OVERVIEW	14296	MADISON, DANE, WI	CONTRACT NO: X
2022 MINERAL POINT LANDFILL GAS CONSTRUCTION	M:\DESIGN\LANDFILL\Mineral Point\2022 CONSTRUCTION\2022 Construction.dwg		
 CITY OF MADISON WISCONSIN	14296	3	



1 EXW-25 HEADER CONNECTION
Scale: 1"=2'

14296	MADISON, DANE, WI	CONTRACT NO:	9035
14296	2022 MINERAL POINT LANDFILL GAS CONSTRUCTION		
14296	M:\DESIGN\LANDFILL\Mineral Point\2022 CONSTRUCTION\Details.dwg		
14296	DETAILS 4		
14296	CITY OF MADISON WISCONSIN		
14296	14296		
14296	D4		
14296	REVISION	DATE	BY
14296	MARK	DATE	BY
14296	DESIGNED BY: JRB	DATE: 6/15/2022 3:30 PM	Scale: 1"=2'
14296	14296	D4	