

4649 Verona Road
Contract 9213
MUNIS 14774

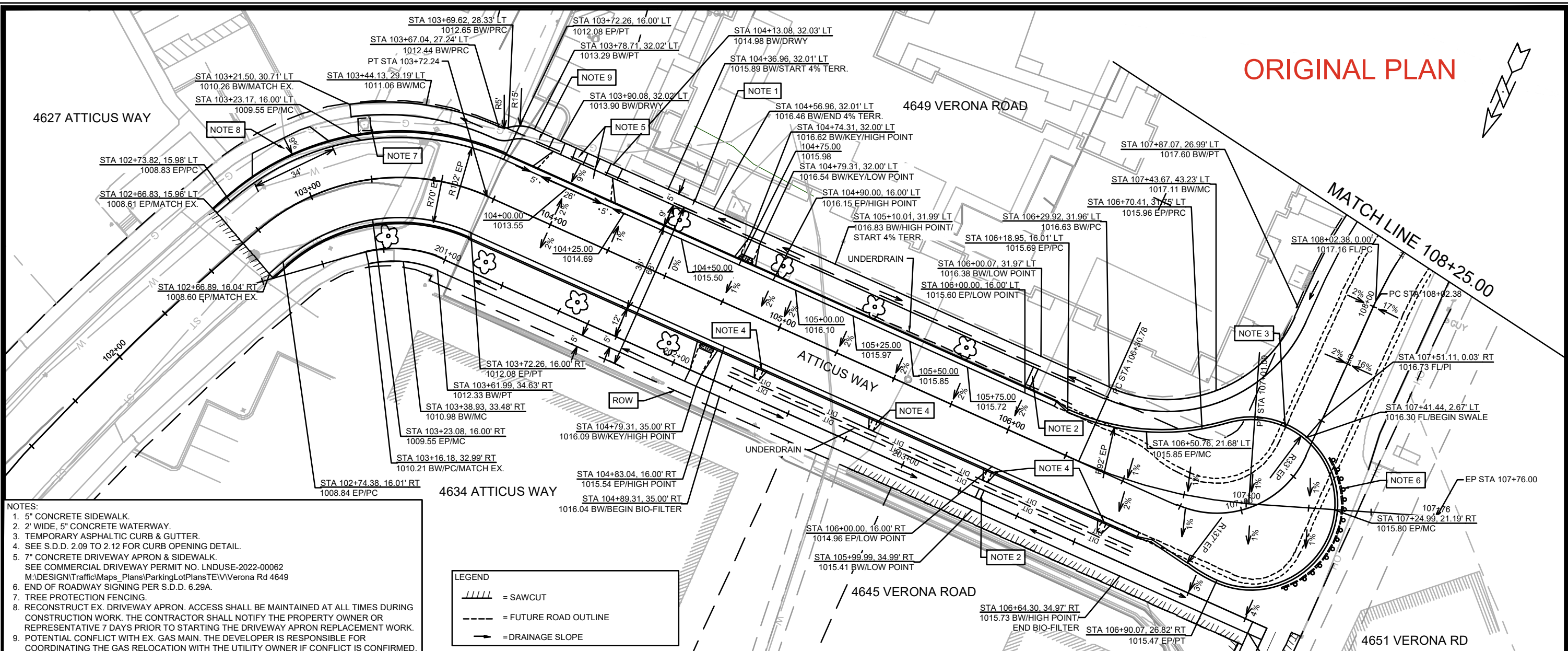
Developer: Summit Ridge Apartments, LLC



Summary of Improvements:

- Project previously approved with a temporary cul-de-sac at the end of Atticus Way.
- Plan revised to remove the cul-de-sac and replace with the street corner to directly match into the City's proposed Rolling Way street construction project.
- Addendum 1 updates existing contract 9213 to match the revised plans

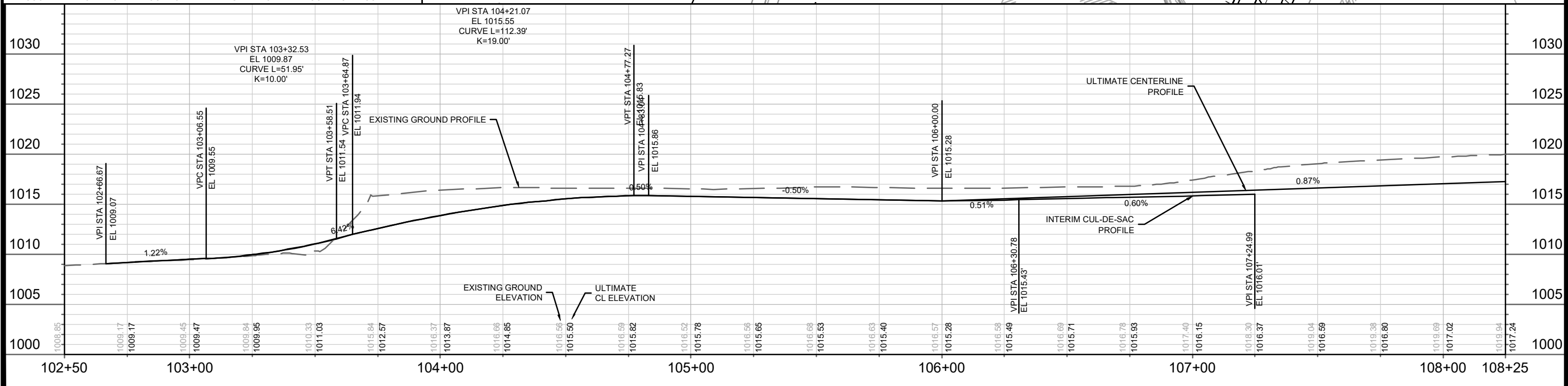
ORIGINAL PLAN



- NOTES:**
- 5" CONCRETE SIDEWALK.
 - 2' WIDE, 5" CONCRETE WATERWAY.
 - TEMPORARY ASPHALTIC CURB & GUTTER.
 - SEE S.D.D. 2.09 TO 2.12 FOR CURB OPENING DETAIL.
 - 7" CONCRETE DRIVEWAY APRON & SIDEWALK. SEE COMMERCIAL DRIVEWAY PERMIT NO. LNDUSE-2022-00062 M:\DESIGN\Traffic\Maps_Plans\ParkingLotPlans\TEV\Verona Rd 4649
 - END OF ROADWAY SIGNING PER S.D.D. 6.29A.
 - TREE PROTECTION FENCING.
 - RECONSTRUCT EX. DRIVEWAY APRON. ACCESS SHALL BE MAINTAINED AT ALL TIMES DURING CONSTRUCTION WORK. THE CONTRACTOR SHALL NOTIFY THE PROPERTY OWNER OR REPRESENTATIVE 7 DAYS PRIOR TO STARTING THE DRIVEWAY APRON REPLACEMENT WORK.
 - POTENTIAL CONFLICT WITH EX. GAS MAIN. THE DEVELOPER IS RESPONSIBLE FOR COORDINATING THE GAS RELOCATION WITH THE UTILITY OWNER IF CONFLICT IS CONFIRMED.

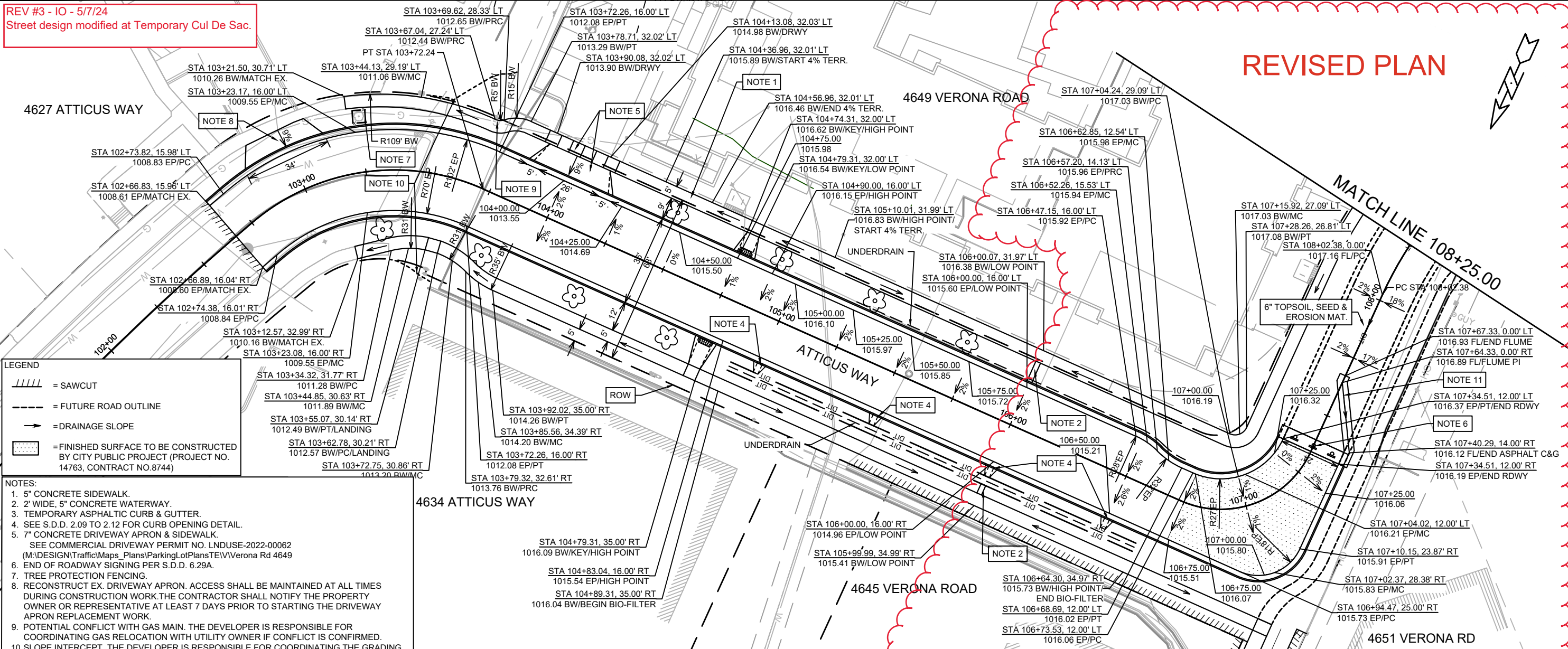
LEGEND

- = SAWCUT
- = FUTURE ROAD OUTLINE
- = DRAINAGE SLOPE



14774	MADISON, WI	9231	14774
STREET PLAN & PROFILE - ATTICUS WAY		4649 VERONA ROAD	
M:\DESIGN\Projects\14774\CAD\Streets\14774EN-PnP.dwg			
14774		P-1	

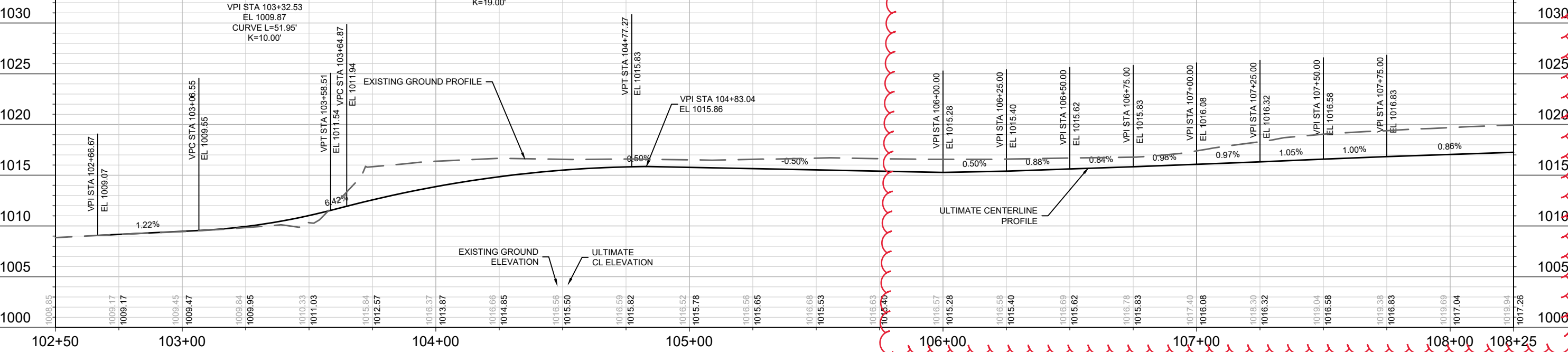
REV #3 - IO - 5/7/24
Street design modified at Temporary Cul De Sac.



LEGEND

- ////// = SAWCUT
- - - - - = FUTURE ROAD OUTLINE
- = DRAINAGE SLOPE
- ▨ = FINISHED SURFACE TO BE CONSTRUCTED BY CITY PUBLIC PROJECT (PROJECT NO. 14763, CONTRACT NO.8744)

- NOTES:**
- 5" CONCRETE SIDEWALK.
 - 2' WIDE, 5" CONCRETE WATERWAY.
 - TEMPORARY ASPHALTIC CURB & GUTTER.
 - SEE S.D.D. 2.09 TO 2.12 FOR CURB OPENING DETAIL.
 - 7" CONCRETE DRIVEWAY APRON & SIDEWALK.
SEE COMMERCIAL DRIVEWAY PERMIT NO. LNDUSE-2022-00062 (M:\DESIGN\Traffic\Maps_Plan\Plan\Verona Rd 4649)
 - END OF ROADWAY SIGNING PER S.D.D. 6.29A.
 - TREE PROTECTION FENCING.
 - RECONSTRUCT EX. DRIVEWAY APRON. ACCESS SHALL BE MAINTAINED AT ALL TIMES DURING CONSTRUCTION WORK. THE CONTRACTOR SHALL NOTIFY THE PROPERTY OWNER OR REPRESENTATIVE AT LEAST 7 DAYS PRIOR TO STARTING THE DRIVEWAY APRON REPLACEMENT WORK.
 - POTENTIAL CONFLICT WITH GAS MAIN. THE DEVELOPER IS RESPONSIBLE FOR COORDINATING GAS RELOCATION WITH UTILITY OWNER IF CONFLICT IS CONFIRMED.
 - SLOPE INTERCEPT. THE DEVELOPER IS RESPONSIBLE FOR COORDINATING THE GRADING AND RESTORATION, AND SHALL NOTIFY THE PROPERTY OWNER OR REPRESENTATIVE PRIOR TO THE START OF WORK.
 - CURB TO DITCH TRANSITION ASPHALT FLUME PER S.D.D. 5.4.10



REV#	10
REV3	7/26/23
MARK	5/7/24
DESIGNED BY	14774
DATE	5/7/24
REVISION	###
SCALE	1" = 40'
BY	P-1

14774
MADISON, WI
CONTRACT NO.: 9231
STREET PLAN & PROFILE - ATTICUS WAY
4649 VERONA ROAD
M:\DESIGN\Projects\14774\CAD\Streets\14774EN-PrP.dwg
14774
P-1