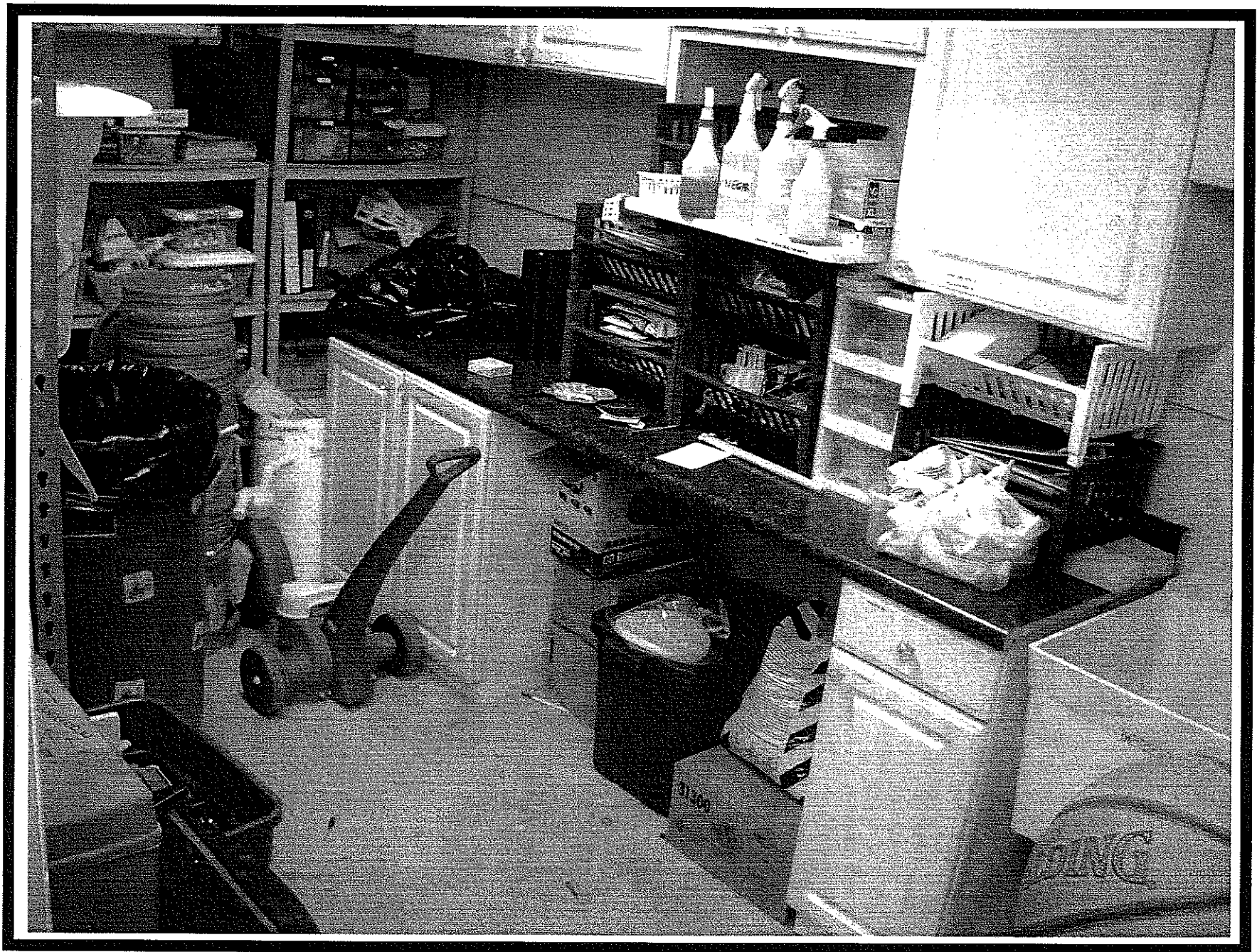


In the back corner is the current space we are using. The proposal will move the front counter and current space out approximately 3ft, enclose the office space, leaving the front desk space to greet residents.



This is our storage/meeting/janitor closet/staff “lounge” space. This is where we meet with parents, collaborating organizations, conduct interviews, problem solve disciplinary issues with youth and hold confidential meetings during the winter months.

