



**knothe • bruce**  
ARCHITECTS

Phone: 8401 Greenway Blvd., Suite 900  
608.836.3690 Middleton, WI 53562



ISSUED  
UDC / LUA SUBMITTAL 2024.10.07

PROJECT TITLE  
**MIDPOINT  
MEADOWS**

**BUILDING #2  
FIRST FLOOR PLAN**  
1/8" = 1'-0"

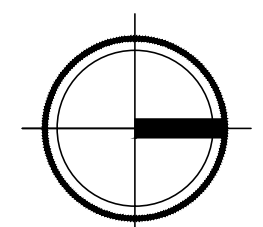
Multi-Family  
Development Lot 218  
SHEET TITLE  
**Building #2  
First Floor Plan**

SHEET NUMBER

**ACI01-2**

PROJECT NO. **2411**

© Knothe & Bruce Architects, LLC





knothe bruce  
ARCHITECTS

Phone: 8401 Greenway Blvd., Suite 900  
608.836.3690 Middleton, WI 53562



ISSUED  
UDC / LUA SUBMITTAL 2024.10.07

PROJECT TITLE  
MIDPOINT  
MEADOWS

**BUILDING #2  
SECOND FLOOR PLAN**  
1/8" = 1'-0"

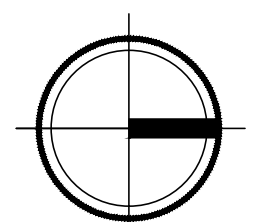
Multi-Family  
Development Lot 218  
SHEET TITLE  
**Building #2  
Second Floor Plan**

SHEET NUMBER

**AC102-2**

PROJECT NO. **2411**

© Knothe & Bruce Architects, LLC





**knothe • bruce**  
ARCHITECTS

Phone: 8401 Greenway Blvd., Suite 900  
608.836.3690 Middleton, WI 53562



ISSUED  
UDC / LUA SUBMITTAL 2024.10.07

PROJECT TITLE  
**MIDPOINT  
MEADOWS**

**BUILDING #2  
THIRD FLOOR PLAN**  
1/8" = 1'-0"

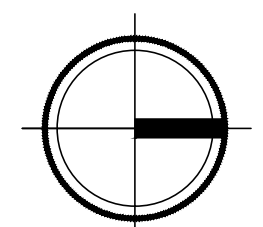
Multi-Family  
Development Lot 218  
SHEET TITLE  
**Building #2  
Third Floor Plan**

SHEET NUMBER

**ACI03-2**

PROJECT NO. **2411**

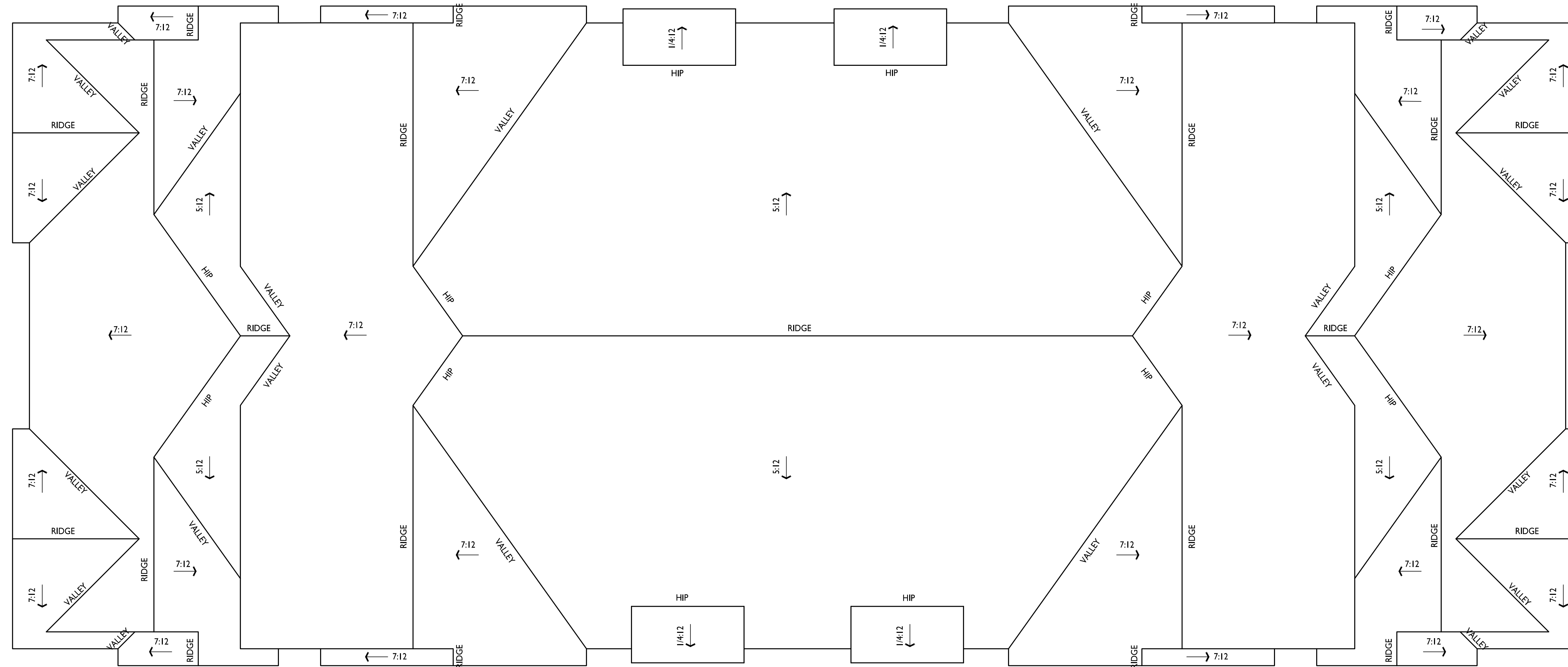
© Knothe & Bruce Architects, LLC





**knothe • bruce**  
ARCHITECTS

Phone: 8401 Greenway Blvd., Suite 900  
608.836.3690 Middleton, WI 53562



ISSUED  
UDC / LUA SUBMITTAL 2024.10.07

PROJECT TITLE  
**MIDPOINT  
MEADOWS**

**BUILDING #2  
ROOF PLAN**  
1  
AC104-2 1/8" = 1'-0"

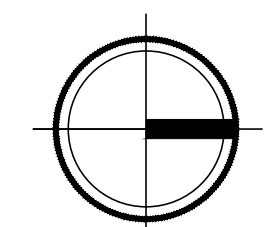
Multi-Family  
Development Lot 218  
SHEET TITLE  
**Building #2  
Roof Plan**

SHEET NUMBER

**AC104-2**

PROJECT NO. **2411**

© Knothe & Bruce Architects, LLC

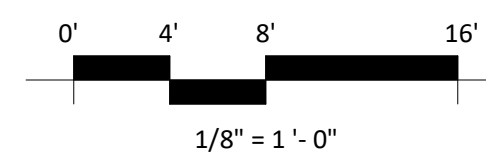




**2** ELEVATION - NORTH  
AC201-2 1/8" = 1'-0"



**1** ELEVATION - EAST  
AC201-2 1/8" = 1'-0"



EXTERIOR MATERIAL SCHEDULE			
MARK	BUILDING ELEMENT	MANUFACTURER	COLOR
01	COMPOSITE LAP SIDING 6"	JAMES HARDIE	DEEP OCEAN
02	COMPOSITE BOARD & BATTEN	JAMES HARDIE	LIGHT MIST
03	COMPOSITE LAP SIDING 6"	JAMES HARDIE - WOODTONE	OLD CHERRY
04	COMPOSITE PANEL	JAMES HARDIE	LIGHT MIST
05	COMPOSITE TRIM	JAMES HARDIE	LIGHT MIST
06	STONE VENEER	COUNTY MATERIAL	CUSTOM GRAY BLEND
07	CAST STONE	EDWARDS	GRAY
08	ACCENT TRIM	JAMES HARDIE - WOODTONE	CORDOVAN BROWN
09	RAILINGS & HANDRAILS	SUPERIOR	BLACK
10	COMPOSITE WINDOW	ANDERSEN	BLACK
11	ALUMINIUM STOREFRONT	N/A	BLACK
12	ROOF SHINGLES	TBD	GRAY
13	METAL ROOF	TBD	SILVER

ISSUED  
LUA SUBMITTAL - 2024.10.07

NOT FOR CONSTRUCTION

PROJECT TITLE  
**Midpoint  
Meadows -  
Building #2**

Madison, WI  
SHEET TITLE  
**Exterior  
Elevations**

SHEET NUMBER

**AC201-2**

PROJECT NUMBER

**2411**



**2** ELEVATION - SOUTH  
AC202-2 1/8" = 1'-0"



**1** ELEVATION - WEST  
AC202-2/ 1/8" = 1'-0"

ISSUED  
LUA SUBMITTAL - 2024.10.07

NOT FOR CONSTRUCTION

PROJECT TITLE  
**Midpoint  
Meadows -  
Building #2**

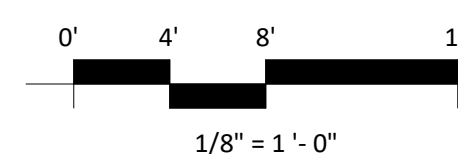
Madison, WI  
SHEET TITLE  
**Exterior  
Elevations**

SHEET NUMBER

**AC202-2**

PROJECT NUMBER

**2411**



EXTERIOR MATERIAL SCHEDULE			
MARK	BUILDING ELEMENT	MANUFACTURER	COLOR
01	COMPOSITE LAP SIDING 6"	JAMES HARDIE	DEEP OCEAN
02	COMPOSITE BOARD & BATTEN	JAMES HARDIE	LIGHT MIST
03	COMPOSITE LAP SIDING 6"	JAMES HARDIE - WOODTONE	OLD CHERRY
04	COMPOSITE PANEL	JAMES HARDIE	LIGHT MIST
05	COMPOSITE TRIM	JAMES HARDIE	LIGHT MIST
06	STONE VENEER	COUNTY MATERIAL	CUSTOM GRAY BLEND
07	CAST STONE	EDWARDS	GRAY
08	ACCENT TRIM	JAMES HARDIE - WOODTONE	CORDOVAN BROWN
09	RAILINGS & HANDRAILS	SUPERIOR	BLACK
10	COMPOSITE WINDOW	ANDERSEN	BLACK
11	ALUMINIUM STOREFRONT	N/A	BLACK
12	ROOF SHINGLES	TBD	GRAY
13	METAL ROOF	TBD	SILVER



**2** COLORED ELEVATION - NORTH  
AC203-2  
1/8" = 1'-0"



**1** COLORED ELEVATION - EAST  
AC203-2  
1/8" = 1'-0"

NOT FOR CONSTRUCTION

ISSUED  
LUA SUBMITTAL - 2024.10.07

PROJECT TITLE  
**Midpoint  
Meadows -  
Building #2**

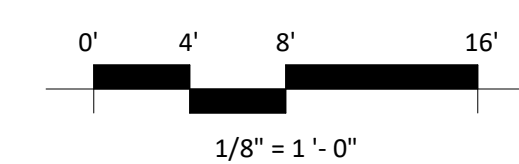
Madison, WI  
SHEET TITLE  
**Exterior  
Elevations Colored**

SHEET NUMBER

**AC203-2**

PROJECT NUMBER

**2411**



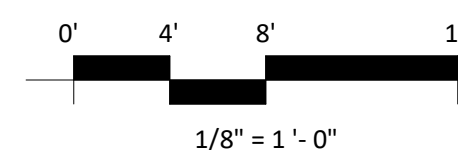
EXTERIOR MATERIAL SCHEDULE			
MARK	BUILDING ELEMENT	MANUFACTURER	COLOR
01	COMPOSITE LAP SIDING 6"	JAMES HARDIE	DEEP OCEAN
02	COMPOSITE BOARD & BATTEN	JAMES HARDIE	LIGHT MIST
03	COMPOSITE LAP SIDING 6"	JAMES HARDIE - WOODTONE	OLD CHERRY
04	COMPOSITE PANEL	JAMES HARDIE	LIGHT MIST
05	COMPOSITE TRIM	JAMES HARDIE	LIGHT MIST
06	STONE VENEER	COUNTY MATERIAL	CUSTOM GRAY BLEND
07	CAST STONE	EDWARDS	GRAY
08	ACCENT TRIM	JAMES HARDIE - WOODTONE	CORDOVAN BROWN
09	RAILINGS & HANDRAILS	SUPERIOR	BLACK
10	COMPOSITE WINDOW	ANDERSEN	BLACK
11	ALUMINIUM STOREFRONT	N/A	BLACK
12	ROOF SHINGLES	TBD	GRAY
13	METAL ROOF	TBD	SILVER



**2** COLORED ELEVATION - SOUTH  
AC204-2/ 1/8" = 1'-0"



**1** COLORED ELEVATION - WEST  
AC204-2/ 1/8" = 1'-0"



EXTERIOR MATERIAL SCHEDULE			
MARK	BUILDING ELEMENT	MANUFACTURER	COLOR
01	COMPOSITE LAP SIDING 6"	JAMES HARDIE	DEEP OCEAN
02	COMPOSITE BOARD & BATTEN	JAMES HARDIE	LIGHT MIST
03	COMPOSITE LAP SIDING 6"	JAMES HARDIE - WOODTONE	OLD CHERRY
04	COMPOSITE PANEL	JAMES HARDIE	LIGHT MIST
05	COMPOSITE TRIM	JAMES HARDIE	LIGHT MIST
06	STONE VENEER	COUNTY MATERIAL	CUSTOM GRAY BLEND
07	CAST STONE	EDWARDS	GRAY
08	ACCENT TRIM	JAMES HARDIE - WOODTONE	CORDOVAN BROWN
09	RAILINGS & HANDRAILS	SUPERIOR	BLACK
10	COMPOSITE WINDOW	ANDERSEN	BLACK
11	ALUMINIUM STOREFRONT	N/A	BLACK
12	ROOF SHINGLES	TBD	GRAY
13	METAL ROOF	TBD	SILVER

ISSUED  
LUA SUBMITTAL - 2024.10.07

NOT FOR CONSTRUCTION

PROJECT TITLE  
**Midpoint  
Meadows -  
Building #2**

Madison, WI  
SHEET TITLE  
**Exterior  
Elevations Colored**

SHEET NUMBER

**AC204-2**

PROJECT NUMBER

**2411**







**BUILDING #3  
FIRST FLOOR PLAN**  
1/8" = 1'-0"



**knothe • bruce**  
ARCHITECTS

Phone: 608.836.3690 8401 Greenway Blvd., Suite 900  
Middleton, WI 53562

ISSUED  
UDC / LUA SUBMITTAL 2024.10.07

PROJECT TITLE  
**MIDPOINT  
MEADOWS**

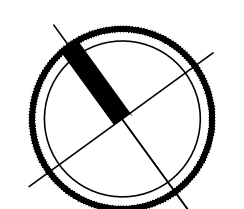
Multi-Family  
Development Lot 218  
SHEET TITLE  
**Building #3  
First Floor Plan**

SHEET NUMBER

**ACI01-3**

PROJECT NO. **2411**

© Knothe & Bruce Architects, LLC





**knothe bruce**  
ARCHITECTS

Phone: 8401 Greenway Blvd., Suite 900  
608.836.3690 Middleton, WI 53562



ISSUED  
UDC / LUA SUBMITTAL 2024.10.07

PROJECT TITLE  
**MIDPOINT  
MEADOWS**

Multi-Family  
Development Lot 218  
SHEET TITLE  
**Building #3  
Second Floor Plan**

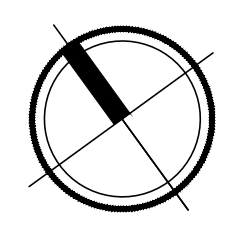
**BUILDING #3  
SECOND FLOOR PLAN**  
1/8" = 1'-0"

SHEET NUMBER

**AC102-3**

PROJECT NO. **2411**

© Knothe & Bruce Architects, LLC





**BUILDING #3  
THIRD FLOOR PLAN**

1  
AC103-3 1/8" = 1'-0"



**knothe • bruce**  
ARCHITECTS

Phone: 8401 Greenway Blvd., Suite 900  
608.836.3690 Middleton, WI 53562

ISSUED  
UDC / LUA SUBMITTAL 2024.10.07

PROJECT TITLE  
**MIDPOINT  
MEADOWS**

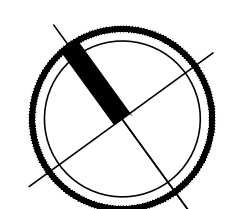
Multi-Family  
Development Lot 218  
SHEET TITLE  
**Building #3  
Third Floor Plan**

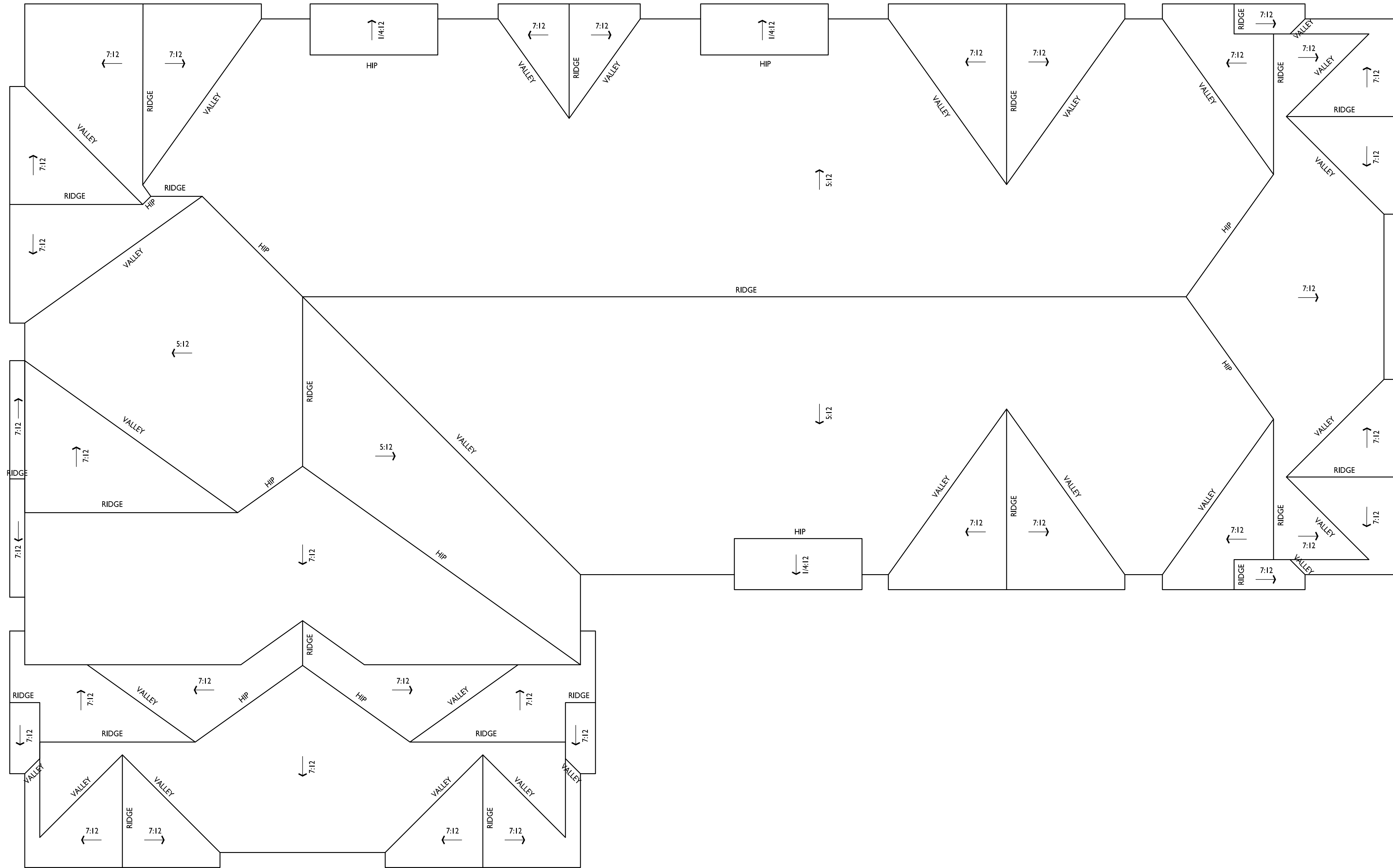
SHEET NUMBER

**AC103-3**

PROJECT NO. **2411**

© Knothe & Bruce Architects, LLC





1
**BUILDING #3**  
**ROOF PLAN**  
 1/8" = 1'-0"



**knothe • bruce**  
**ARCHITECTS**  
 Phone: 8401 Greenway Blvd., Suite 900  
 608.836.3690 Middleton, WI 53562

ISSUED  
 UDC / LUA SUBMITTAL 2024.10.07

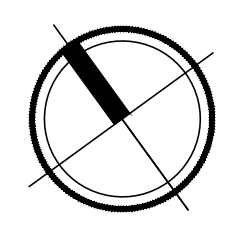
PROJECT TITLE  
**MIDPOINT**  
**MEADOWS**

Multi-Family  
 Development Lot 218  
 SHEET TITLE  
**Building #3**  
**Roof Plan**

SHEET NUMBER

**AC104-3**

PROJECT NO. **2411**  
 © Knothe & Bruce Architects, LLC





2 ELEVATION - NORTHWEST  
AC201-3 1/8" = 1'-0"



1 ELEVATION - NORTHEAST  
AC201-3 1/8" = 1'-0"

NOT FOR CONSTRUCTION

ISSUED  
LUA SUBMITTAL - 2024.10.07

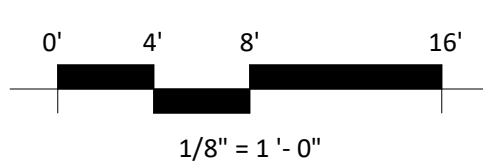
PROJECT TITLE  
Midpoint  
Meadows -  
Building #3

Madison, WI  
SHEET TITLE  
Exterior  
Elevations

SHEET NUMBER

**AC201-3**

PROJECT NUMBER  
2411



EXTERIOR MATERIAL SCHEDULE			
MARK	BUILDING ELEMENT	MANUFACTURER	COLOR
01	COMPOSITE LAP SIDING 6"	JAMES HARDIE	DEEP OCEAN
02	COMPOSITE BOARD & BATTEN	JAMES HARDIE	LIGHT MIST
03	COMPOSITE LAP SIDING 6"	JAMES HARDIE - WOODTONE	OLD CHERRY
04	COMPOSITE PANEL	JAMES HARDIE	LIGHT MIST
05	COMPOSITE TRIM	JAMES HARDIE	LIGHT MIST
06	STONE VENEER	COUNTY MATERIAL	CUSTOM GRAY BLEND
07	CAST STONE	EDWARDS	GRAY
08	ACCENT TRIM	JAMES HARDIE - WOODTONE	CORDOVAN BROWN
09	RAILINGS & HANDRAILS	SUPERIOR	BLACK
10	COMPOSITE WINDOW	ANDERSEN	BLACK
11	ALUMINIUM STOREFRONT	N/A	BLACK
12	ROOF SHINGLES	TBD	GRAY
13	METAL ROOF	TBD	SILVER



2 ELEVATION - SOUTHEAST  
AC202-3 1/8" = 1'-0"



1 ELEVATION - SOUTHWEST  
AC202-3 1/8" = 1'-0"

NOT FOR CONSTRUCTION

ISSUED  
LUA SUBMITTAL - 2024.10.07

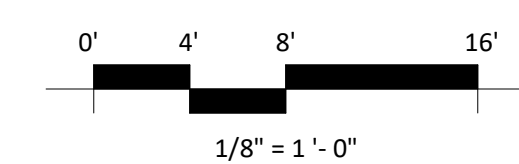
PROJECT TITLE  
**Midpoint  
Meadows -  
Building #3**

Madison, WI  
SHEET TITLE  
**Exterior  
Elevations**

SHEET NUMBER

**AC202-3**

PROJECT NUMBER  
**2411**



EXTERIOR MATERIAL SCHEDULE			
MARK	BUILDING ELEMENT	MANUFACTURER	COLOR
01	COMPOSITE LAP SIDING 6"	JAMES HARDIE	DEEP OCEAN
02	COMPOSITE BOARD & BATTEN	JAMES HARDIE	LIGHT MIST
03	COMPOSITE LAP SIDING 6"	JAMES HARDIE - WOODTONE	OLD CHERRY
04	COMPOSITE PANEL	JAMES HARDIE	LIGHT MIST
05	COMPOSITE TRIM	JAMES HARDIE	LIGHT MIST
06	STONE VENEER	COUNTY MATERIAL	CUSTOM GRAY BLEND
07	CAST STONE	EDWARDS	GRAY
08	ACCENT TRIM	JAMES HARDIE - WOODTONE	CORDOVAN BROWN
09	RAILINGS & HANDRAILS	SUPERIOR	BLACK
10	COMPOSITE WINDOW	ANDERSEN	BLACK
11	ALUMINIUM STOREFRONT	N/A	BLACK
12	ROOF SHINGLES	TBD	GRAY
13	METAL ROOF	TBD	SILVER



2 COLORED ELEVATION - NORTHWEST  
AC203-3 1/8" = 1'-0"



1 COLORED ELEVATION - NORTHEAST  
AC203-3 1/8" = 1'-0"

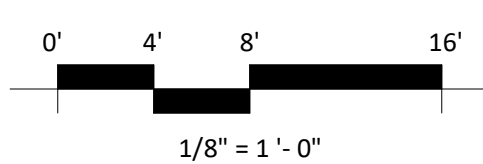
NOT FOR CONSTRUCTION

ISSUED  
LUA SUBMITTAL - 2024.10.07

PROJECT TITLE  
Midpoint  
Meadows -  
Building #3

Madison, WI  
SHEET TITLE  
Exterior  
Elevations Colored

SHEET NUMBER  
**AC203-3**  
PROJECT NUMBER  
2411



EXTERIOR MATERIAL SCHEDULE			
MARK	BUILDING ELEMENT	MANUFACTURER	COLOR
01	COMPOSITE LAP SIDING 6"	JAMES HARDIE	DEEP OCEAN
02	COMPOSITE BOARD & BATTEN	JAMES HARDIE	LIGHT MIST
03	COMPOSITE LAP SIDING 6"	JAMES HARDIE - WOODTONE	OLD CHERRY
04	COMPOSITE PANEL	JAMES HARDIE	LIGHT MIST
05	COMPOSITE TRIM	JAMES HARDIE	LIGHT MIST
06	STONE VENEER	COUNTY MATERIAL	CUSTOM GRAY BLEND
07	CAST STONE	EDWARDS	GRAY
08	ACCENT TRIM	JAMES HARDIE - WOODTONE	CORDOVAN BROWN
09	RAILINGS & HANDRAILS	SUPERIOR	BLACK
10	COMPOSITE WINDOW	ANDERSEN	BLACK
11	ALUMINIUM STOREFRONT	N/A	BLACK
12	ROOF SHINGLES	TBD	GRAY
13	METAL ROOF	TBD	SILVER

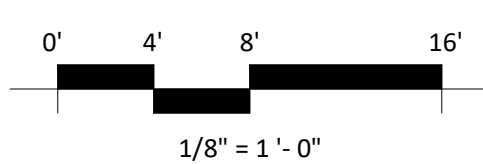




2 COLORED ELEVATION - SOUTHEAST  
AC204-3 1/8" = 1'-0"



1 COLORED ELEVATION - SOUTHWEST  
AC204-3 1/8" = 1'-0"



EXTERIOR MATERIAL SCHEDULE			
MARK	BUILDING ELEMENT	MANUFACTURER	COLOR
01	COMPOSITE LAP SIDING 6"	JAMES HARDIE	DEEP OCEAN
02	COMPOSITE BOARD & BATTEN	JAMES HARDIE	LIGHT MIST
03	COMPOSITE LAP SIDING 6"	JAMES HARDIE - WOODTONE	OLD CHERRY
04	COMPOSITE PANEL	JAMES HARDIE	LIGHT MIST
05	COMPOSITE TRIM	JAMES HARDIE	LIGHT MIST
06	STONE VENEER	COUNTY MATERIAL	CUSTOM GRAY BLEND
07	CAST STONE	EDWARDS	GRAY
08	ACCENT TRIM	JAMES HARDIE - WOODTONE	CORDOVAN BROWN
09	RAILINGS & HANDRAILS	SUPERIOR	BLACK
10	COMPOSITE WINDOW	ANDERSEN	BLACK
11	ALUMINIUM STOREFRONT	N/A	BLACK
12	ROOF SHINGLES	TBD	GRAY
13	METAL ROOF	TBD	SILVER

NOT FOR CONSTRUCTION

ISSUED  
LUA SUBMITTAL - 2024.10.07

PROJECT TITLE  
Midpoint  
Meadows -  
Building #3

Madison, WI  
SHEET TITLE  
Exterior  
Elevations Colored

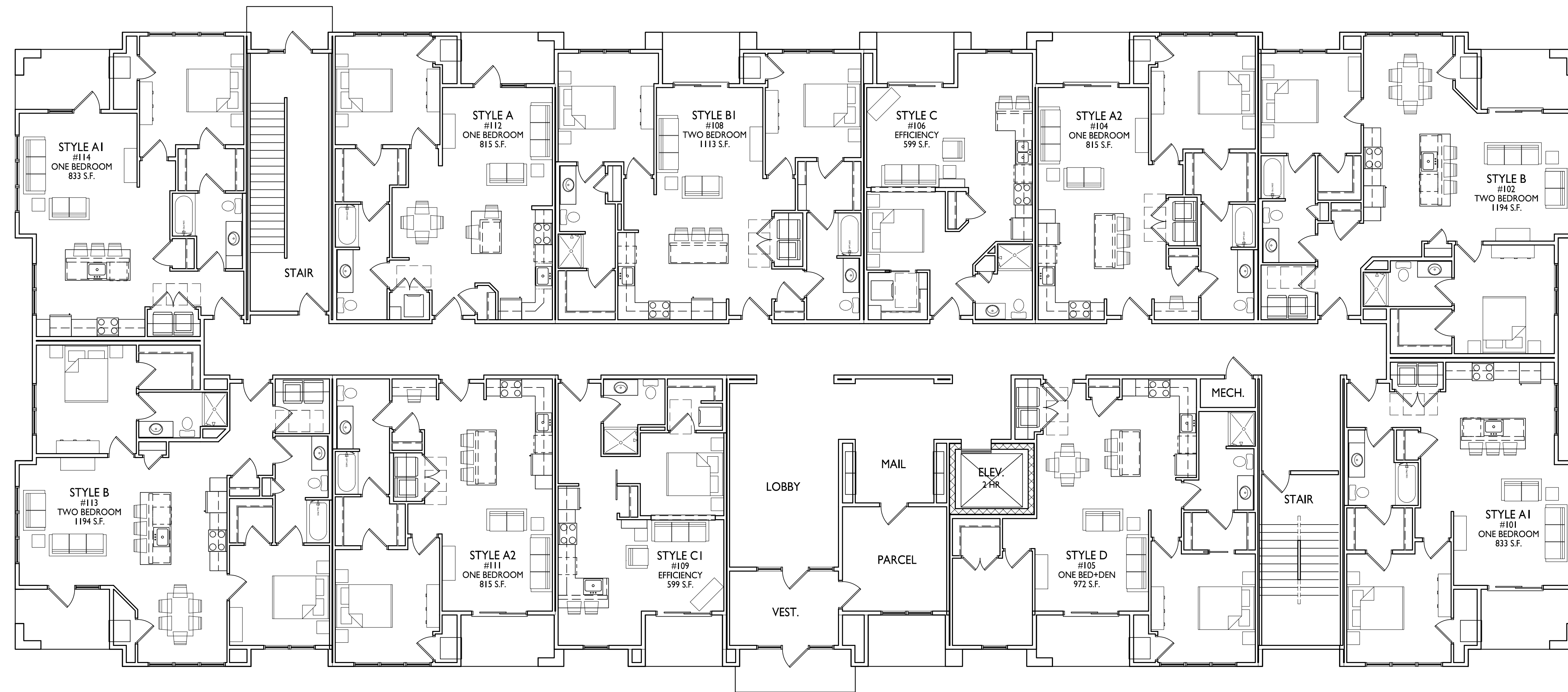
SHEET NUMBER  
**AC204-3**  
PROJECT NUMBER  
2411





**knothe + bruce**  
ARCHITECTS

Phone: 608.836.3690 8401 Greenway Blvd., Suite 900  
Middleton, WI 53562



ISSUED  
UDC / LUA SUBMITTAL 2024.10.07

PROJECT TITLE  
**MIDPOINT  
MEADOWS**

**BUILDING #4  
FIRST FLOOR PLAN**  
1/8" = 1'-0"

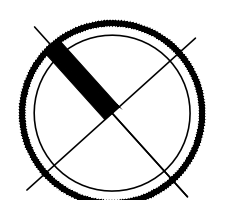
Multi-Family  
Development Lot 218  
SHEET TITLE  
**Building #4  
First Floor Plan**

SHEET NUMBER

**ACI01-4**

PROJECT NO. **2411**

© Knothe & Bruce Architects, LLC





**knothe • bruce**  
ARCHITECTS

Phone: 608.836.3690 8401 Greenway Blvd., Suite 900  
Middleton, WI 53562



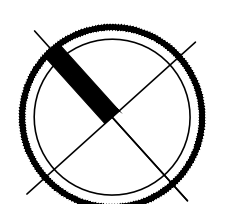
ISSUED  
UDC / LUA SUBMITTAL 2024.10.07

PROJECT TITLE  
**MIDPOINT  
MEADOWS**

**BUILDING #4  
SECOND FLOOR PLAN**  
1/8" = 1'-0"

Multi-Family  
Development Lot 218  
SHEET TITLE  
**Building #4  
Second Floor Plan**

SHEET NUMBER



**AC102-4**

PROJECT NO. **2411**

© Knothe & Bruce Architects, LLC



**knothe • bruce**  
ARCHITECTS

Phone: 608.836.3690 8401 Greenway Blvd., Suite 900  
Middleton, WI 53562



ISSUED  
UDC / LUA SUBMITTAL 2024.10.07

PROJECT TITLE  
**MIDPOINT  
MEADOWS**

**BUILDING #4  
THIRD FLOOR PLAN**  
1/8" = 1'-0"

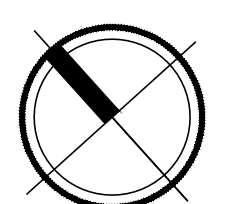
Multi-Family  
Development Lot 218  
SHEET TITLE  
**Building #4  
Third Floor Plan**

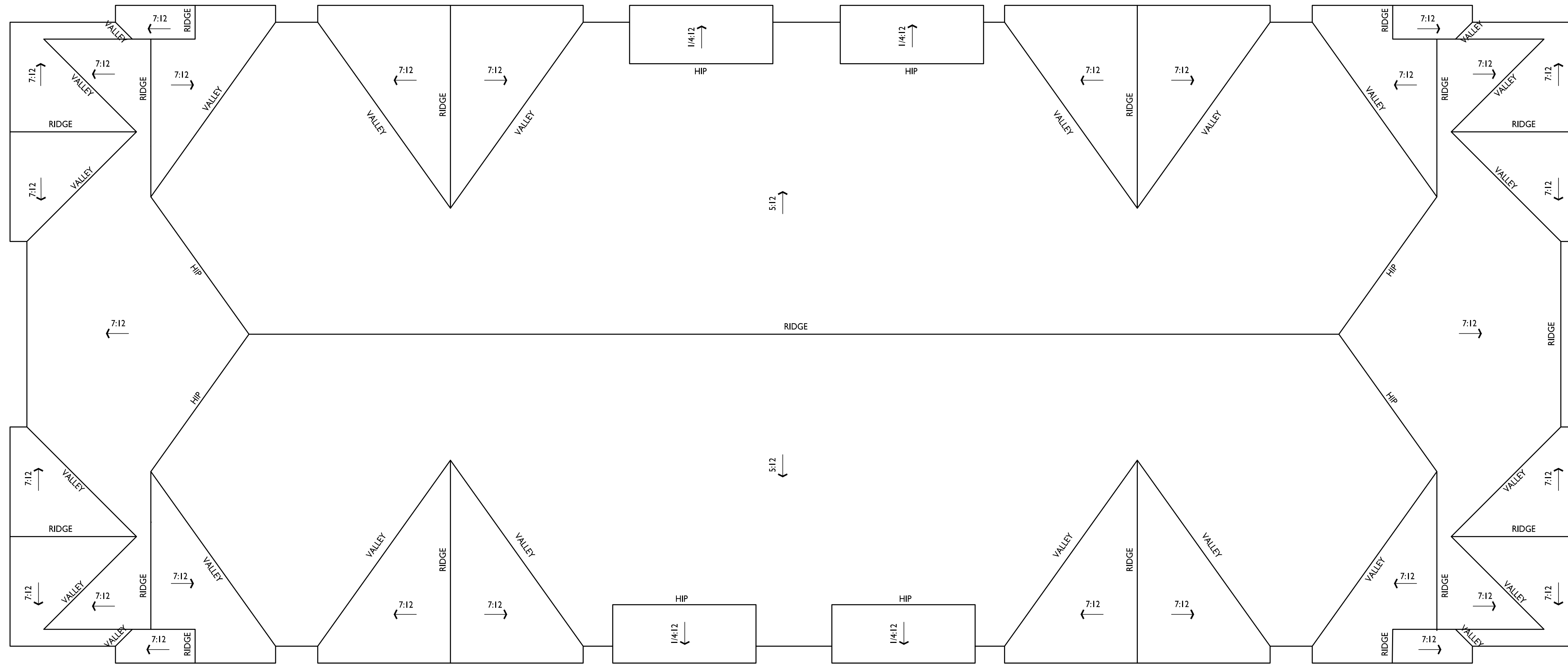
SHEET NUMBER

**ACI03-4**

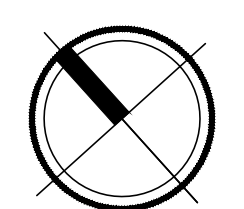
PROJECT NO. **2411**

© Knothe & Bruce Architects, LLC





**BUILDING #4**  
**ROOF PLAN**  
1/8" = 1'-0"





**2** ELEVATION - NORTHWEST  
AC201-4 1/8" = 1'-0"



**1** ELEVATION - NORTHEAST  
AC201-4 1/8" = 1'-0"

ISSUED  
LUA SUBMITTAL - 2024.10.07

NOT FOR CONSTRUCTION

PROJECT TITLE  
**Midpoint  
Meadows -  
Building #4**

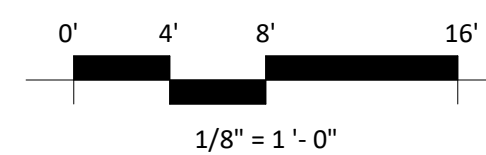
Madison, WI  
SHEET TITLE  
**Exterior  
Elevations**

SHEET NUMBER

**AC201-4**

PROJECT NUMBER  
**2411**

EXTERIOR MATERIAL SCHEDULE			
MARK	BUILDING ELEMENT	MANUFACTURER	COLOR
01	COMPOSITE LAP SIDING 6"	JAMES HARDIE	DEEP OCEAN
02	COMPOSITE BOARD & BATTEN	JAMES HARDIE	LIGHT MIST
03	COMPOSITE LAP SIDING 6"	JAMES HARDIE - WOODTONE	OLD CHERRY
04	COMPOSITE PANEL	JAMES HARDIE	LIGHT MIST
05	COMPOSITE TRIM	JAMES HARDIE	LIGHT MIST
06	STONE VENEER	COUNTY MATERIAL	CUSTOM GRAY BLEND
07	CAST STONE	EDWARDS	GRAY
08	ACCENT TRIM	JAMES HARDIE - WOODTONE	CORDOVAN BROWN
09	RAILINGS & HANDRAILS	SUPERIOR	BLACK
10	COMPOSITE WINDOWS	ANDERSEN	BLACK
11	ALUMINIUM STOREFRONT	N/A	BLACK
12	ROOF SHINGLES	TBD	GRAY
13	METAL ROOF	TBD	SILVER

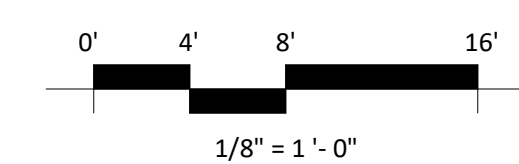




2 ELEVATION - SOUTHEAST  
AC202-4 1/8" = 1'-0"



1 ELEVATION - SOUTHWEST  
AC202-4 1/8" = 1'-0"



EXTERIOR MATERIAL SCHEDULE			
MARK	BUILDING ELEMENT	MANUFACTURER	COLOR
01	COMPOSITE LAP SIDING 6"	JAMES HARDIE	DEEP OCEAN
02	COMPOSITE BOARD & BATTEN	JAMES HARDIE	LIGHT MIST
03	COMPOSITE LAP SIDING 6"	JAMES HARDIE - WOODTONE	OLD CHERRY
04	COMPOSITE PANEL	JAMES HARDIE	LIGHT MIST
05	COMPOSITE TRIM	JAMES HARDIE	LIGHT MIST
06	STONE VENEER	COUNTY MATERIAL	CUSTOM GRAY BLEND
07	CAST STONE	EDWARDS	GRAY
08	ACCENT TRIM	JAMES HARDIE - WOODTONE	CORDOVAN BROWN
09	RAILINGS & HANDRAILS	SUPERIOR	BLACK
10	COMPOSITE WINDOWS	ANDERSEN	BLACK
11	ALUMINIUM STOREFRONT	N/A	BLACK
12	ROOF SHINGLES	TBD	GRAY
13	METAL ROOF	TBD	SILVER

NOT FOR CONSTRUCTION

ISSUED  
LUA SUBMITTAL - 2024.10.07

PROJECT TITLE  
Midpoint  
Meadows -  
Building #4

Madison, WI  
SHEET TITLE  
Exterior  
Elevations

SHEET NUMBER

**AC202-4**

PROJECT NUMBER

2411





**2** COLORED ELEVATION - NORTHWEST  
AC203-4 1/8" = 1'-0"



**1** COLORED ELEVATION - NORTHEAST  
AC203-4 1/8" = 1'-0"

ISSUED  
LUA SUBMITTAL - 2024.10.07

NOT FOR CONSTRUCTION

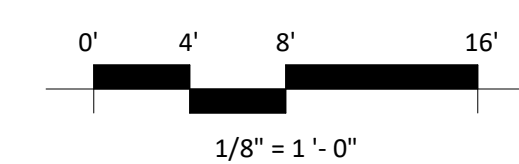
PROJECT TITLE  
**Midpoint  
Meadows -  
Building #4**

Madison, WI  
SHEET TITLE  
**Exterior  
Elevations Colored**

SHEET NUMBER

**AC203-4**

PROJECT NUMBER  
**2411**



EXTERIOR MATERIAL SCHEDULE			
MARK	BUILDING ELEMENT	MANUFACTURER	COLOR
01	COMPOSITE LAP SIDING 6"	JAMES HARDIE	DEEP OCEAN
02	COMPOSITE BOARD & BATTEN	JAMES HARDIE	LIGHT MIST
03	COMPOSITE LAP SIDING 6"	JAMES HARDIE - WOODTONE	OLD CHERRY
04	COMPOSITE PANEL	JAMES HARDIE	LIGHT MIST
05	COMPOSITE TRIM	JAMES HARDIE	LIGHT MIST
06	STONE VENEER	COUNTY MATERIAL	CUSTOM GRAY BLEND
07	CAST STONE	EDWARDS	GRAY
08	ACCENT TRIM	JAMES HARDIE - WOODTONE	CORDOVAN BROWN
09	RAILINGS & HANDRAILS	SUPERIOR	BLACK
10	COMPOSITE WINDOWS	ANDERSEN	BLACK
11	ALUMINIUM STOREFRONT	N/A	BLACK
12	ROOF SHINGLES	TBD	GRAY
13	METAL ROOF	TBD	SILVER



2 COLORED ELEVATION - SOUTHEAST  
AC204-4 1/8" = 1'-0"



1 COLORED ELEVATION - SOUTHWEST  
AC204-4 1/8" = 1'-0"

NOT FOR CONSTRUCTION

ISSUED  
LUA SUBMITTAL - 2024.10.07

PROJECT TITLE  
**Midpoint  
Meadows -  
Building #4**

Madison, WI  
SHEET TITLE  
**Exterior  
Elevations Colored**

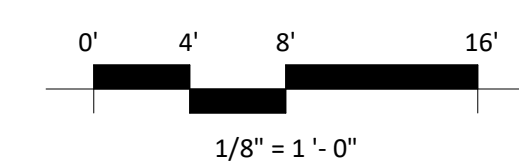
SHEET NUMBER

**AC204-4**

PROJECT NUMBER

**2411**

EXTERIOR MATERIAL SCHEDULE			
MARK	BUILDING ELEMENT	MANUFACTURER	COLOR
01	COMPOSITE LAP SIDING 6"	JAMES HARDIE	DEEP OCEAN
02	COMPOSITE BOARD & BATTEN	JAMES HARDIE	LIGHT MIST
03	COMPOSITE LAP SIDING 6"	JAMES HARDIE - WOODTONE	OLD CHERRY
04	COMPOSITE PANEL	JAMES HARDIE	LIGHT MIST
05	COMPOSITE TRIM	JAMES HARDIE	LIGHT MIST
06	STONE VENEER	COUNTY MATERIAL	CUSTOM GRAY BLEND
07	CAST STONE	EDWARDS	GRAY
08	ACCENT TRIM	JAMES HARDIE - WOODTONE	CORDOVAN BROWN
09	RAILINGS & HANDRAILS	SUPERIOR	BLACK
10	COMPOSITE WINDOWS	ANDERSEN	BLACK
11	ALUMINIUM STOREFRONT	N/A	BLACK
12	ROOF SHINGLES	TBD	GRAY
13	METAL ROOF	TBD	SILVER

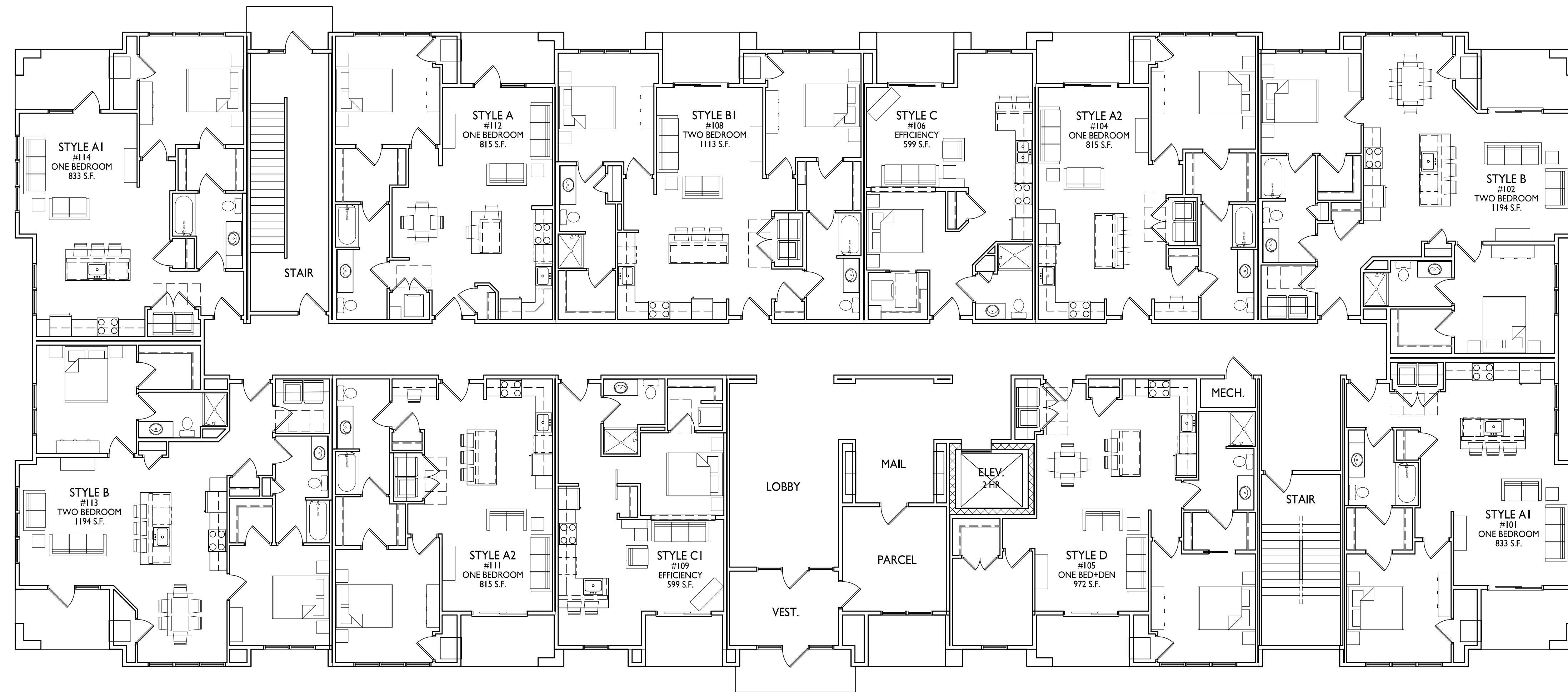






knothe • bruce  
ARCHITECTS

Phone: 608.836.3690 8401 Greenway Blvd., Suite 900  
Middleton, WI 53562



ISSUED  
UDC / LUA SUBMITTAL 2024.10.07

PROJECT TITLE  
MIDPOINT  
MEADOWS

**BUILDING #5  
FIRST FLOOR PLAN**  
1/8" = 1'-0"

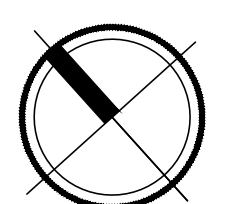
Multi-Family  
Development Lot 218  
SHEET TITLE  
**Building #5  
First Floor Plan**

SHEET NUMBER

**ACI01-5**

PROJECT NO. **2411**

© Knothe & Bruce Architects, LLC





knothe + bruce  
ARCHITECTS

Phone: 608.836.3690 8401 Greenway Blvd., Suite 900  
Middleton, WI 53562



ISSUED  
UDC / LUA SUBMITTAL 2024.10.07

PROJECT TITLE  
MIDPOINT  
MEADOWS

**BUILDING #5  
SECOND FLOOR PLAN**  
1/8" = 1'-0"

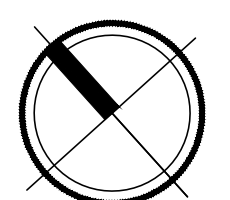
Multi-Family  
Development Lot 218  
SHEET TITLE  
Building #5  
Second Floor Plan

SHEET NUMBER

**AC102-5**

PROJECT NO. 2411

© Knothe & Bruce Architects, LLC





**knothe • bruce**  
ARCHITECTS

Phone: 608.836.3690 8401 Greenway Blvd., Suite 900  
Middleton, WI 53562



ISSUED  
UDC / LUA SUBMITTAL 2024.10.07

PROJECT TITLE  
**MIDPOINT  
MEADOWS**

**BUILDING #5  
THIRD FLOOR PLAN**  
1/8" = 1'-0"

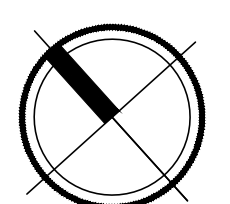
Multi-Family  
Development Lot 218  
SHEET TITLE  
**Building #5  
Third Floor Plan**

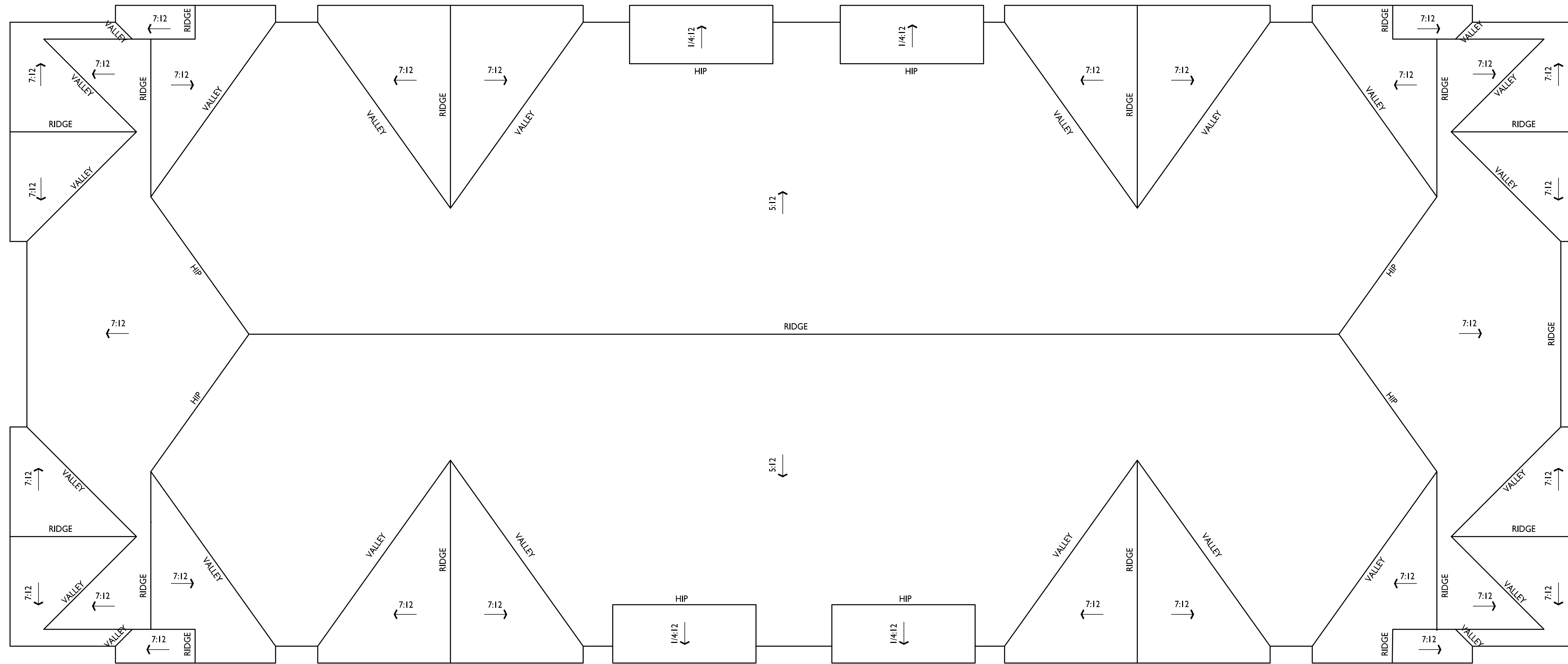
SHEET NUMBER

**ACI03-5**

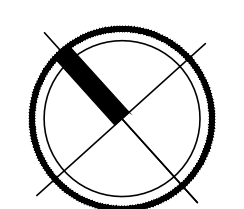
PROJECT NO. **2411**

© Knothe & Bruce Architects, LLC





**BUILDING #5  
ROOF PLAN**  
1/8" = 1'-0"





2 ELEVATION - NORTHWEST  
AC201-5 1/8" = 1'-0"



1 ELEVATION - NORTHEAST  
AC201-5 1/8" = 1'-0"

ISSUED  
LUA SUBMITTAL - 2024.10.07

NOT FOR CONSTRUCTION

PROJECT TITLE  
Midpoint  
Meadows -  
Building #5

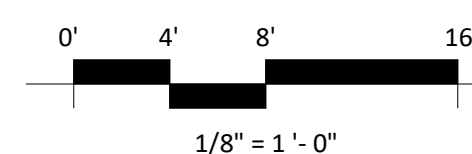
Madison, WI  
SHEET TITLE  
Exterior  
Elevations

SHEET NUMBER

**AC201-5**

PROJECT NUMBER

2411



EXTERIOR MATERIAL SCHEDULE			
MARK	BUILDING ELEMENT	MANUFACTURER	COLOR
01	COMPOSITE LAP SIDING 6"	JAMES HARDIE	DEEP OCEAN
02	COMPOSITE BOARD & BATTEN	JAMES HARDIE	LIGHT MIST
03	COMPOSITE LAP SIDING 6"	JAMES HARDIE - WOODTONE	OLD CHERRY
04	COMPOSITE PANEL	JAMES HARDIE	LIGHT MIST
05	COMPOSITE TRIM	JAMES HARDIE	LIGHT MIST
06	STONE VENEER	COUNTY MATERIAL	CUSTOM GRAY BLEND
07	CAST STONE	EDWARDS	GRAY
08	ACCENT TRIM	JAMES HARDIE - WOODTONE	CORDOVAN BROWN
09	RAILINGS & HANDRAILS	SUPERIOR	BLACK
10	COMPOSITE WINDOWS	ANDERSEN	BLACK
11	ALUMINIUM STOREFRONT	N/A	BLACK
12	ROOF SHINGLES	TBD	GRAY
13	METAL ROOF	TBD	SILVER





2 ELEVATION - SOUTHEAST  
AC202-5 1/8" = 1'-0"



1 ELEVATION - SOUTHWEST  
AC202-5 1/8" = 1'-0"

ISSUED  
LUA SUBMITTAL - 2024.10.07

NOT FOR CONSTRUCTION

PROJECT TITLE  
**Midpoint  
Meadows -  
Building #5**

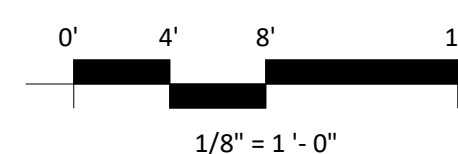
Madison, WI  
SHEET TITLE  
**Exterior  
Elevations**

SHEET NUMBER

**AC202-5**

PROJECT NUMBER

**2411**



EXTERIOR MATERIAL SCHEDULE			
MARK	BUILDING ELEMENT	MANUFACTURER	COLOR
01	COMPOSITE LAP SIDING 6"	JAMES HARDIE	DEEP OCEAN
02	COMPOSITE BOARD & BATTEN	JAMES HARDIE	LIGHT MIST
03	COMPOSITE LAP SIDING 6"	JAMES HARDIE - WOODTONE	OLD CHERRY
04	COMPOSITE PANEL	JAMES HARDIE	LIGHT MIST
05	COMPOSITE TRIM	JAMES HARDIE	LIGHT MIST
06	STONE VENEER	COUNTY MATERIAL	CUSTOM GRAY BLEND
07	CAST STONE	EDWARDS	GRAY
08	ACCENT TRIM	JAMES HARDIE - WOODTONE	CORDOVAN BROWN
09	RAILINGS & HANDRAILS	SUPERIOR	BLACK
10	COMPOSITE WINDOWS	ANDERSEN	BLACK
11	ALUMINIUM STOREFRONT	N/A	BLACK
12	ROOF SHINGLES	TBD	GRAY
13	METAL ROOF	TBD	SILVER



2 COLORED ELEVATION - NORTHWEST  
AC203-5 1/8" = 1'-0"



1 COLORED ELEVATION - NORTHEAST  
AC203-5 1/8" = 1'-0"

NOT FOR CONSTRUCTION

ISSUED  
LUA SUBMITTAL - 2024.10.07

PROJECT TITLE  
Midpoint  
Meadows -  
Building #5

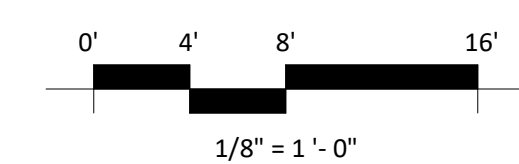
Madison, WI  
SHEET TITLE  
Exterior  
Elevations Colored

SHEET NUMBER

**AC203-5**

PROJECT NUMBER

2411



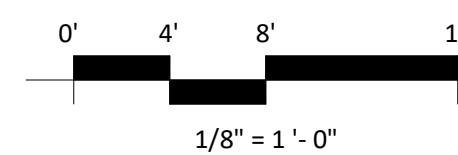
EXTERIOR MATERIAL SCHEDULE			
MARK	BUILDING ELEMENT	MANUFACTURER	COLOR
01	COMPOSITE LAP SIDING 6"	JAMES HARDIE	DEEP OCEAN
02	COMPOSITE BOARD & BATTEN	JAMES HARDIE	LIGHT MIST
03	COMPOSITE LAP SIDING 6"	JAMES HARDIE - WOODTONE	OLD CHERRY
04	COMPOSITE PANEL	JAMES HARDIE	LIGHT MIST
05	COMPOSITE TRIM	JAMES HARDIE	LIGHT MIST
06	STONE VENEER	COUNTY MATERIAL	CUSTOM GRAY BLEND
07	CAST STONE	EDWARDS	GRAY
08	ACCENT TRIM	JAMES HARDIE - WOODTONE	CORDOVAN BROWN
09	RAILINGS & HANDRAILS	SUPERIOR	BLACK
10	COMPOSITE WINDOWS	ANDERSEN	BLACK
11	ALUMINIUM STOREFRONT	N/A	BLACK
12	ROOF SHINGLES	TBD	GRAY
13	METAL ROOF	TBD	SILVER



2 COLORED ELEVATION - SOUTHEAST  
AC204-5 1/8" = 1'-0"



1 COLORED ELEVATION - SOUTHWEST  
AC204-5 1/8" = 1'-0"



EXTERIOR MATERIAL SCHEDULE			
MARK	BUILDING ELEMENT	MANUFACTURER	COLOR
01	COMPOSITE LAP SIDING 6"	JAMES HARDIE	DEEP OCEAN
02	COMPOSITE BOARD & BATTEN	JAMES HARDIE	LIGHT MIST
03	COMPOSITE LAP SIDING 6"	JAMES HARDIE - WOODTONE	OLD CHERRY
04	COMPOSITE PANEL	JAMES HARDIE	LIGHT MIST
05	COMPOSITE TRIM	JAMES HARDIE	LIGHT MIST
06	STONE VENEER	COUNTY MATERIAL	CUSTOM GRAY BLEND
07	CAST STONE	EDWARDS	GRAY
08	ACCENT TRIM	JAMES HARDIE - WOODTONE	CORDOVAN BROWN
09	RAILINGS & HANDRAILS	SUPERIOR	BLACK
10	COMPOSITE WINDOWS	ANDERSEN	BLACK
11	ALUMINIUM STOREFRONT	N/A	BLACK
12	ROOF SHINGLES	TBD	GRAY
13	METAL ROOF	TBD	SILVER

ISSUED  
LUA SUBMITTAL - 2024.10.07

PROJECT TITLE  
Midpoint  
Meadows -  
Building #5

Madison, WI  
SHEET TITLE  
Exterior  
Elevations Colored

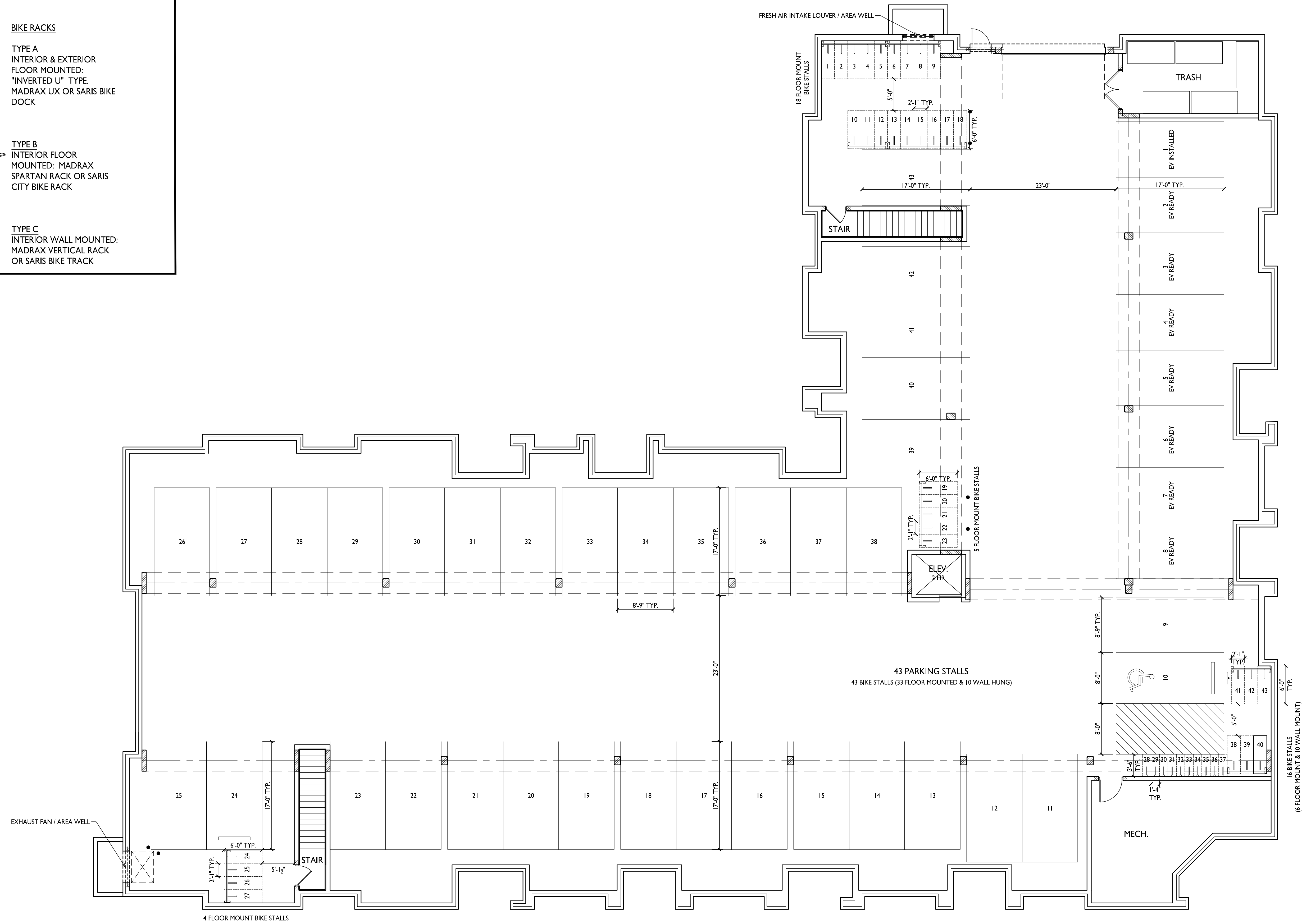
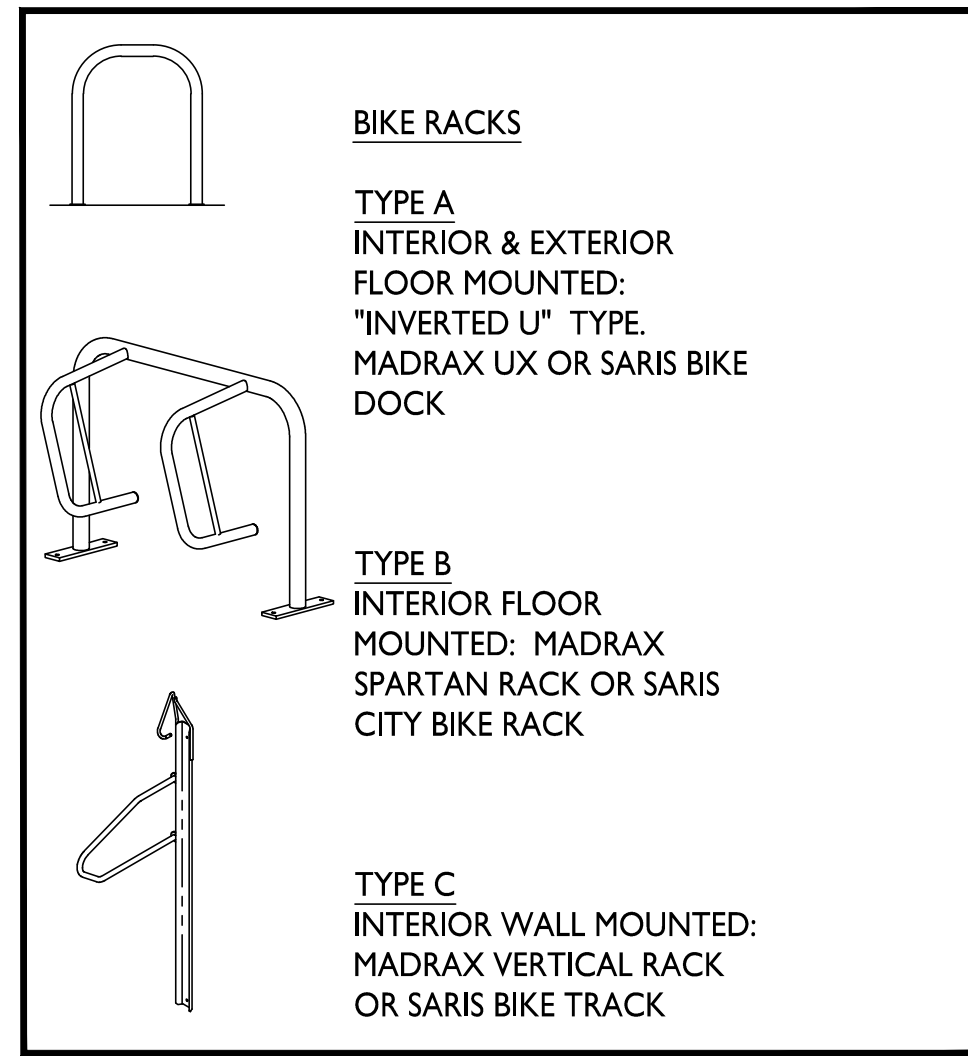
SHEET NUMBER

**AC204-5**

PROJECT NUMBER

**2411**

NOT FOR CONSTRUCTION



**BUILDING #6**  
**BASEMENT PLAN**

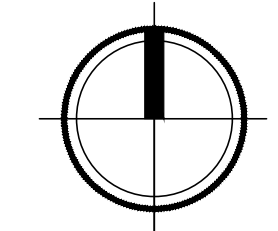
1  
ACI00-6  
1/8" = 1'-0"

ISSUED  
UDC / LUA SUBMITTAL 2024.10.07

PROJECT TITLE  
**MIDPOINT MEADOWS**

Multi-Family  
Development Lot 218  
SHEET TITLE  
**Building #6**  
**Basement Plan**

SHEET NUMBER





**knothe bruce**  
ARCHITECTS

Phone: 8401 Greenway Blvd., Suite 900  
608.836.3690 Middleton, WI 53562

ISSUED  
UDC / LUA SUBMITTAL 2024.10.07

PROJECT TITLE  
**MIDPOINT  
MEADOWS**

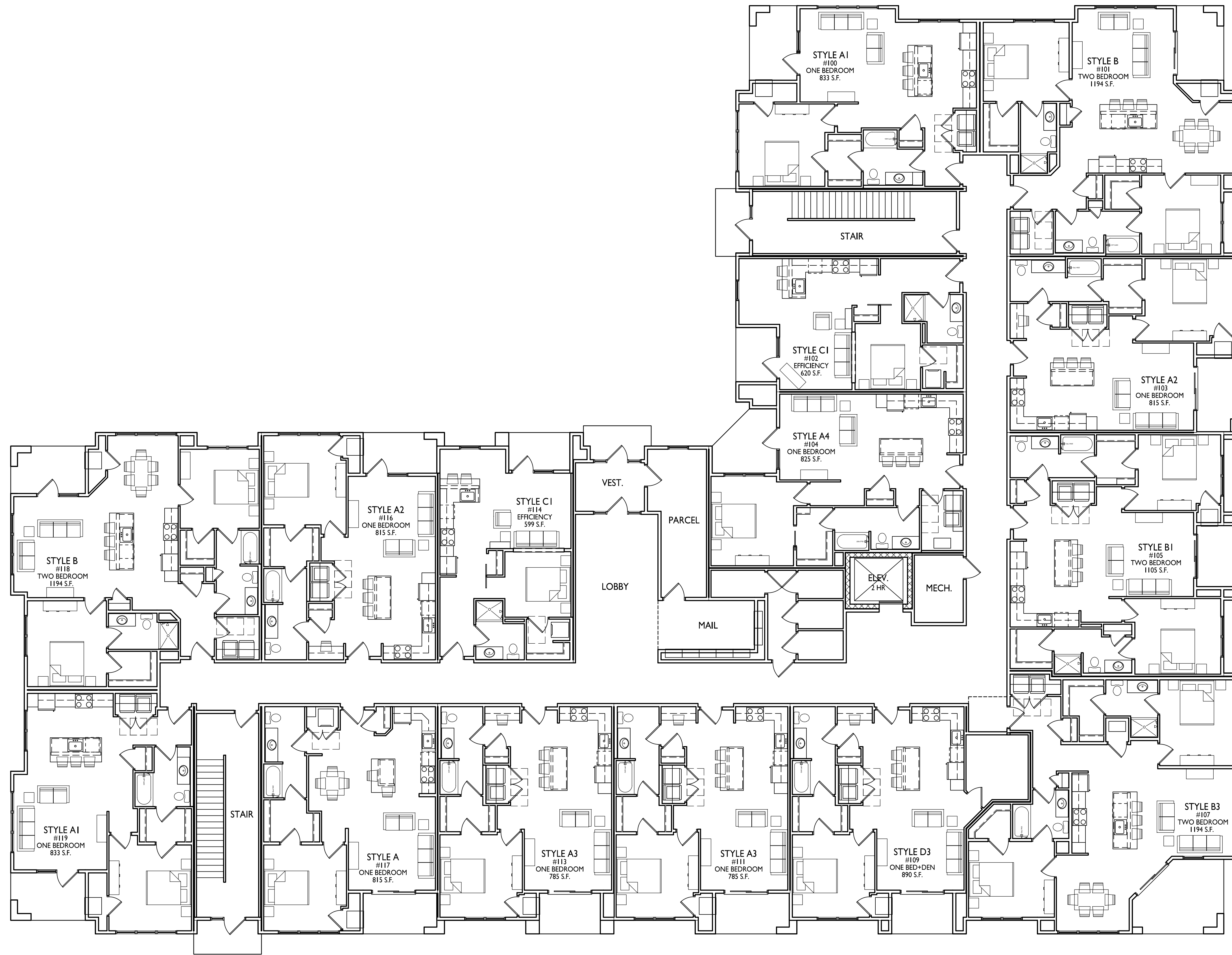
Multi-Family  
Development Lot 218  
SHEET TITLE  
**Building #6  
First Floor Plan**

SHEET NUMBER

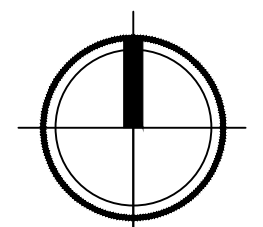
**ACI01-6**

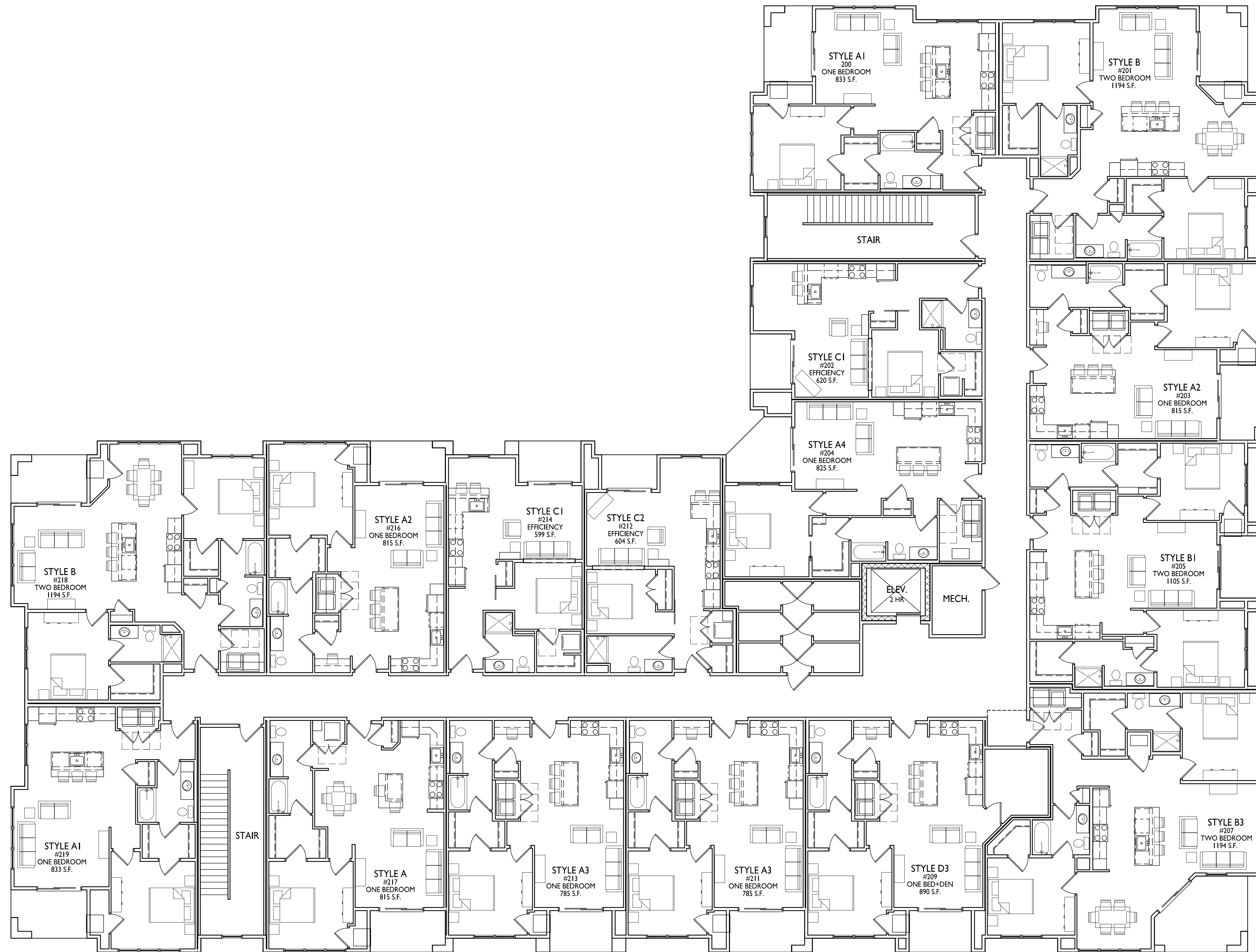
PROJECT NO. **2411**

© Knothe & Bruce Architects, LLC

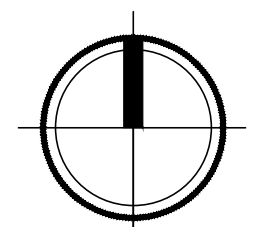


**BUILDING #6  
FIRST FLOOR PLAN**  
1/8" = 1'-0"





**BUILDING #6  
SECOND FLOOR PLAN**  
1/8" = 1'-0"





**knothe • bruce**  
ARCHITECTS

Phone: 8401 Greenway Blvd., Suite 900  
608.836.3690 Middleton, WI 53562

ISSUED  
UDC / LUA SUBMITTAL 2024.10.07

PROJECT TITLE  
**MIDPOINT  
MEADOWS**

Multi-Family  
Development Lot 218  
SHEET TITLE  
**Building #6  
Third Floor Plan**

SHEET NUMBER

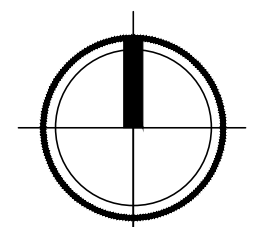
**ACI03-6**

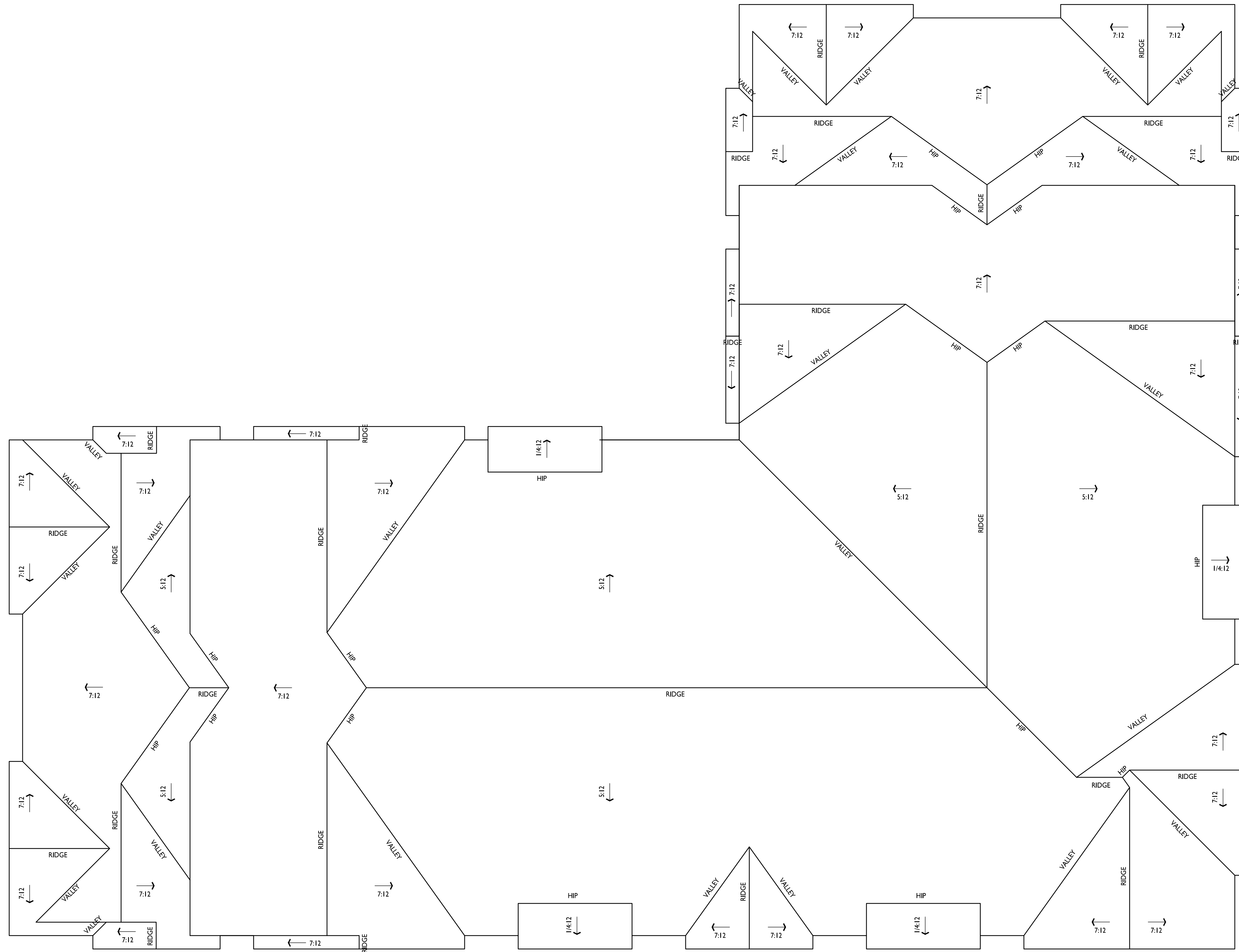
PROJECT NO. **2411**

© Knothe & Bruce Architects, LLC

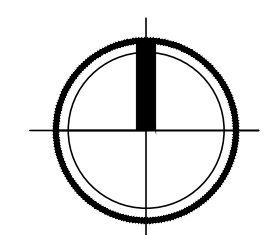


**BUILDING #6  
THIRD FLOOR PLAN**  
1/8" = 1'-0"





**BUILDING #6  
ROOF PLAN**  
1/8" = 1'-0"







**2** ELEVATION - WEST  
AC201-6 1/8" = 1'-0"



**1** ELEVATION - NORTH  
AC201-6 1/8" = 1'-0"

ISSUED  
LUA SUBMITTAL - 2024.10.07

NOT FOR CONSTRUCTION

PROJECT TITLE  
**Midpoint  
Meadows -  
Building #6**

Madison, WI  
SHEET TITLE  
**Exterior  
Elevations**

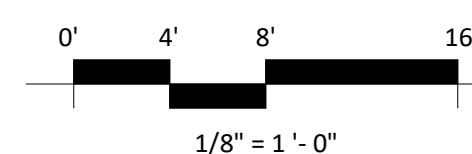
SHEET NUMBER

**AC201-6**

PROJECT NUMBER

**2411**

EXTERIOR MATERIAL SCHEDULE			
MARK	BUILDING ELEMENT	MANUFACTURER	COLOR
01	COMPOSITE LAP SIDING 6"	JAMES HARDIE	DEEP OCEAN
02	COMPOSITE BOARD & BATTEN	JAMES HARDIE	LIGHT MIST
03	COMPOSITE LAP SIDING 6"	JAMES HARDIE - WOODTONE	OLD CHERRY
04	COMPOSITE PANEL	JAMES HARDIE	LIGHT MIST
05	COMPOSITE TRIM	JAMES HARDIE	LIGHT MIST
06	STONE VENEER	COUNTY MATERIAL	CUSTOM GRAY BLEND
07	CAST STONE	EDWARDS	GRAY
08	ACCENT TRIM	JAMES HARDIE - WOODTONE	CORDOVAN BROWN
09	RAILINGS & HANDRAILS	SUPERIOR	BLACK
10	COMPOSITE WINDOW	ANDERSEN	BLACK
11	ALUMINIUM STOREFRONT	N/A	BLACK
12	ROOF SHINGLES	TBD	GRAY
13	METAL ROOF	TBD	SILVER





**knothe + bruce**  
ARCHITECTS

Phone: 8401 Greenway Blvd, Suite 900  
608.836.3690 Middleton, WI 53562



2 ELEVATION - EAST  
AC202-6 1/8" = 1'-0"



1 ELEVATION - SOUTH  
AC202-6 1/8" = 1'-0"

ISSUED  
LUA SUBMITTAL - 2024.10.07

NOT FOR CONSTRUCTION

PROJECT TITLE  
Midpoint  
Meadows -  
Building #6

Madison, WI  
SHEET TITLE  
Exterior  
Elevations

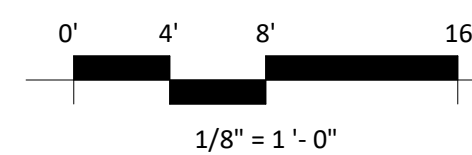
SHEET NUMBER

**AC202-6**

PROJECT NUMBER

2411

© Knothe + Bruce Architects, LLC



EXTERIOR MATERIAL SCHEDULE			
MARK	BUILDING ELEMENT	MANUFACTURER	COLOR
01	COMPOSITE LAP SIDING 6"	JAMES HARDIE	DEEP OCEAN
02	COMPOSITE BOARD & BATTEN	JAMES HARDIE	LIGHT MIST
03	COMPOSITE LAP SIDING 6"	JAMES HARDIE - WOODTONE	OLD CHERRY
04	COMPOSITE PANEL	JAMES HARDIE	LIGHT MIST
05	COMPOSITE TRIM	JAMES HARDIE	LIGHT MIST
06	STONE VENEER	COUNTY MATERIAL	CUSTOM GRAY BLEND
07	CAST STONE	EDWARDS	GRAY
08	ACCENT TRIM	JAMES HARDIE - WOODTONE	CORDOVAN BROWN
09	RAILINGS & HANDRAILS	SUPERIOR	BLACK
10	COMPOSITE WINDOW	ANDERSEN	BLACK
11	ALUMINIUM STOREFRONT	N/A	BLACK
12	ROOF SHINGLES	TBD	GRAY
13	METAL ROOF	TBD	SILVER



2 COLORED ELEVATION - WEST  
AC203-6 1/8" = 1'-0"



1 COLORED ELEVATION - NORTH  
AC203-6 1/8" = 1'-0"

ISSUED  
LUA SUBMITTAL - 2024.10.07

NOT FOR CONSTRUCTION

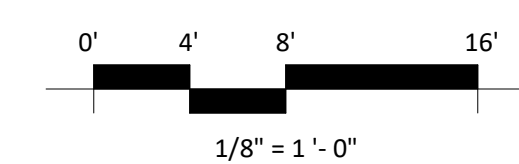
PROJECT TITLE  
Midpoint  
Meadows -  
Building #6

Madison, WI  
SHEET TITLE  
Exterior  
Elevations Colored

SHEET NUMBER

**AC203-6**

PROJECT NUMBER  
2411



EXTERIOR MATERIAL SCHEDULE			
MARK	BUILDING ELEMENT	MANUFACTURER	COLOR
01	COMPOSITE LAP SIDING 6"	JAMES HARDIE	DEEP OCEAN
02	COMPOSITE BOARD & BATTEN	JAMES HARDIE	LIGHT MIST
03	COMPOSITE LAP SIDING 6"	JAMES HARDIE - WOODTONE	OLD CHERRY
04	COMPOSITE PANEL	JAMES HARDIE	LIGHT MIST
05	COMPOSITE TRIM	JAMES HARDIE	LIGHT MIST
06	STONE VENEER	COUNTY MATERIAL	CUSTOM GRAY BLEND
07	CAST STONE	EDWARDS	GRAY
08	ACCENT TRIM	JAMES HARDIE - WOODTONE	CORDOVAN BROWN
09	RAILINGS & HANDRAILS	SUPERIOR	BLACK
10	COMPOSITE WINDOW	ANDERSEN	BLACK
11	ALUMINIUM STOREFRONT	N/A	BLACK
12	ROOF SHINGLES	TBD	GRAY
13	METAL ROOF	TBD	SILVER



2 COLORED ELEVATION - EAST  
AC204-6 1/8" = 1'-0"



1 COLORED ELEVATION - SOUTH  
AC204-6 1/8" = 1'-0"

NOT FOR CONSTRUCTION

ISSUED  
LUA SUBMITTAL - 2024.10.07

PROJECT TITLE  
Midpoint  
Meadows -  
Building #6

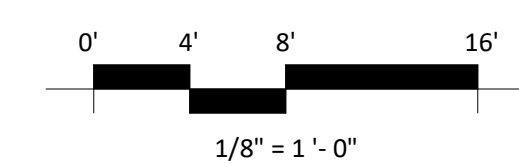
Madison, WI  
SHEET TITLE  
Exterior  
Elevations Colored

SHEET NUMBER

**AC204-6**

PROJECT NUMBER

2411



EXTERIOR MATERIAL SCHEDULE			
MARK	BUILDING ELEMENT	MANUFACTURER	COLOR
01	COMPOSITE LAP SIDING 6"	JAMES HARDIE	DEEP OCEAN
02	COMPOSITE BOARD & BATTEN	JAMES HARDIE	LIGHT MIST
03	COMPOSITE LAP SIDING 6"	JAMES HARDIE - WOODTONE	OLD CHERRY
04	COMPOSITE PANEL	JAMES HARDIE	LIGHT MIST
05	COMPOSITE TRIM	JAMES HARDIE	LIGHT MIST
06	STONE VENEER	COUNTY MATERIAL	CUSTOM GRAY BLEND
07	CAST STONE	EDWARDS	GRAY
08	ACCENT TRIM	JAMES HARDIE - WOODTONE	CORDOVAN BROWN
09	RAILINGS & HANDRAILS	SUPERIOR	BLACK
10	COMPOSITE WINDOW	ANDERSEN	BLACK
11	ALUMINIUM STOREFRONT	N/A	BLACK
12	ROOF SHINGLES	TBD	GRAY
13	METAL ROOF	TBD	SILVER



**knothe • bruce**  
ARCHITECTS

Phone: 8401 Greenway Blvd., Suite 900  
608.836.3690 Middleton, WI 53562

ISSUED  
UDC / LUA SUBMITTAL 2024.10.07

PROJECT TITLE  
**MIDPOINT  
MEADOWS**

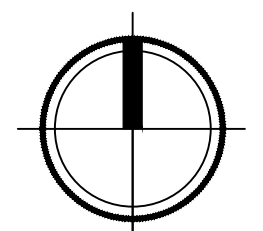
Multi-Family  
Development Lot 218  
SHEET TITLE  
**Clubhouse  
Lower & First  
Floor Plan**

SHEET NUMBER

**ACI01-7**

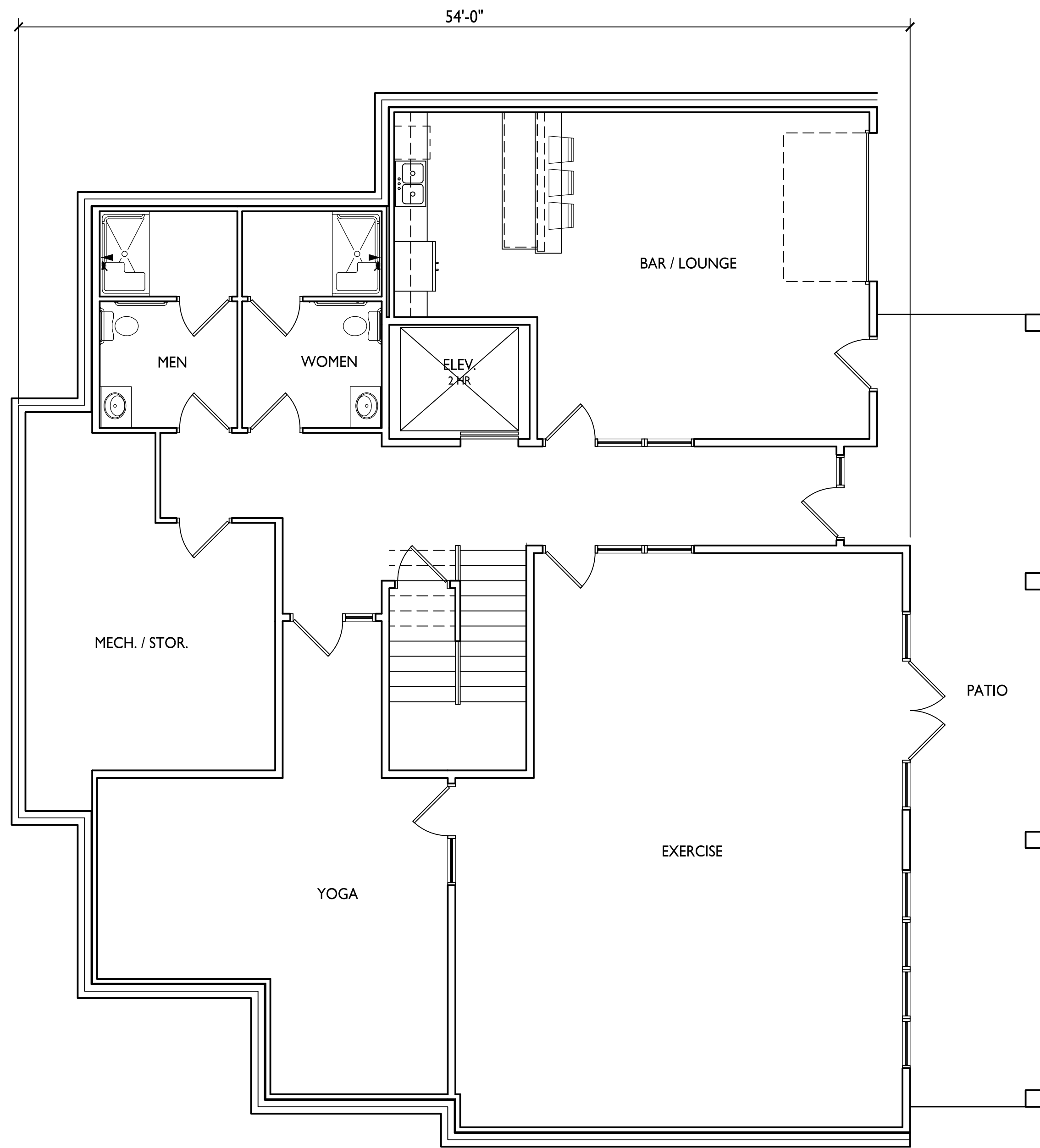
PROJECT NO. **2411**

© Knothe & Bruce Architects, LLC



**1**  
ACI01-7  
3/16" = 1'-0"

**CLUBHOUSE  
FIRST FLOOR PLAN**



**2**  
ACI01-7  
3/16" = 1'-0"

**CLUBHOUSE  
LOWER FLOOR PLAN**



**knothe • bruce**  
ARCHITECTS

Phone: 8401 Greenway Blvd., Suite 900  
608.836.3690 Middleton, WI 53562

ISSUED  
UDC / LUA SUBMITTAL 2024.10.07

PROJECT TITLE  
**MIDPOINT  
MEADOWS**

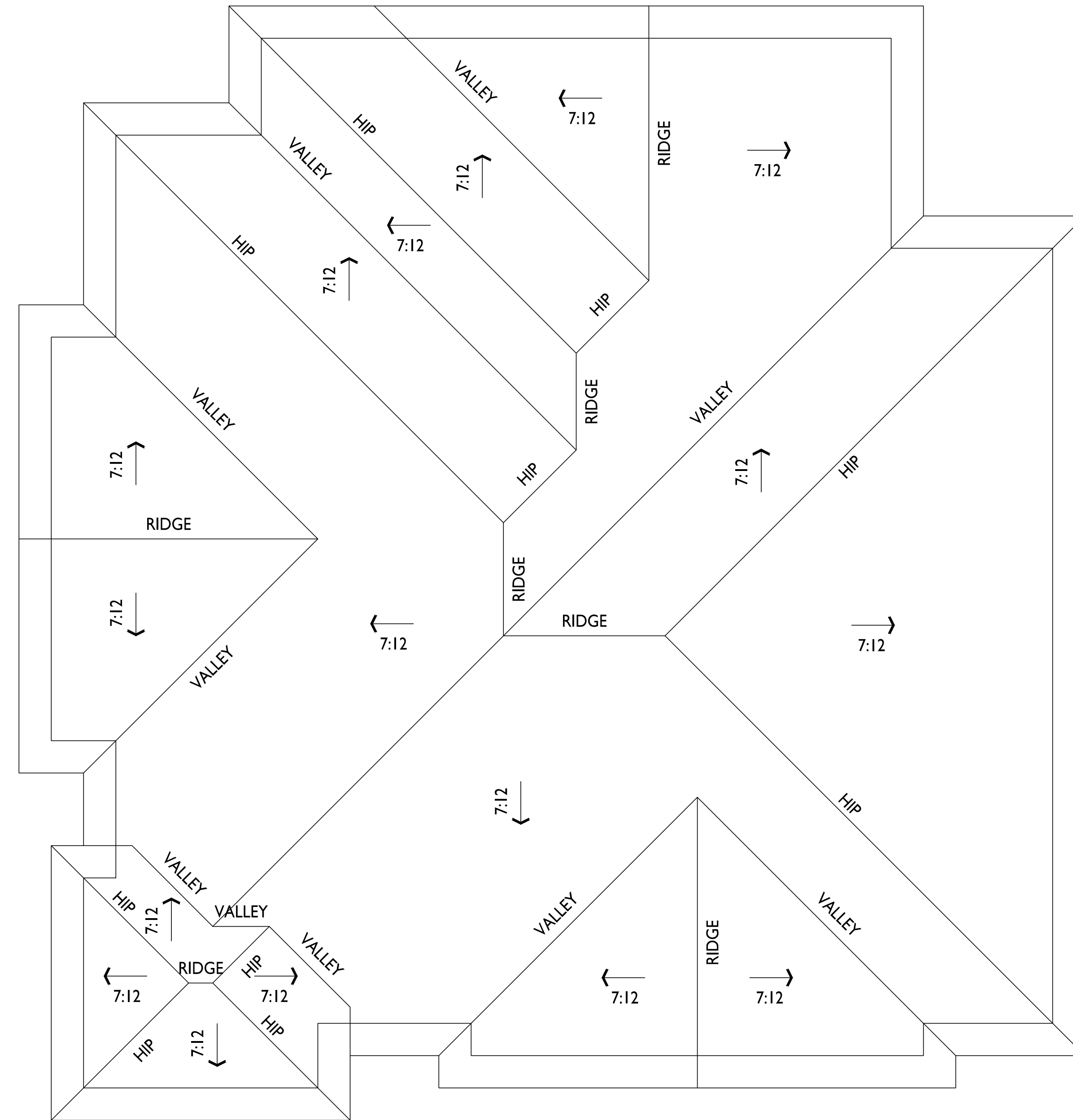
Multi-Family  
Development Lot 218  
SHEET TITLE  
**Clubhouse  
Roof Plan**

SHEET NUMBER

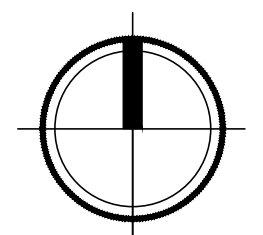
**AC102-7**

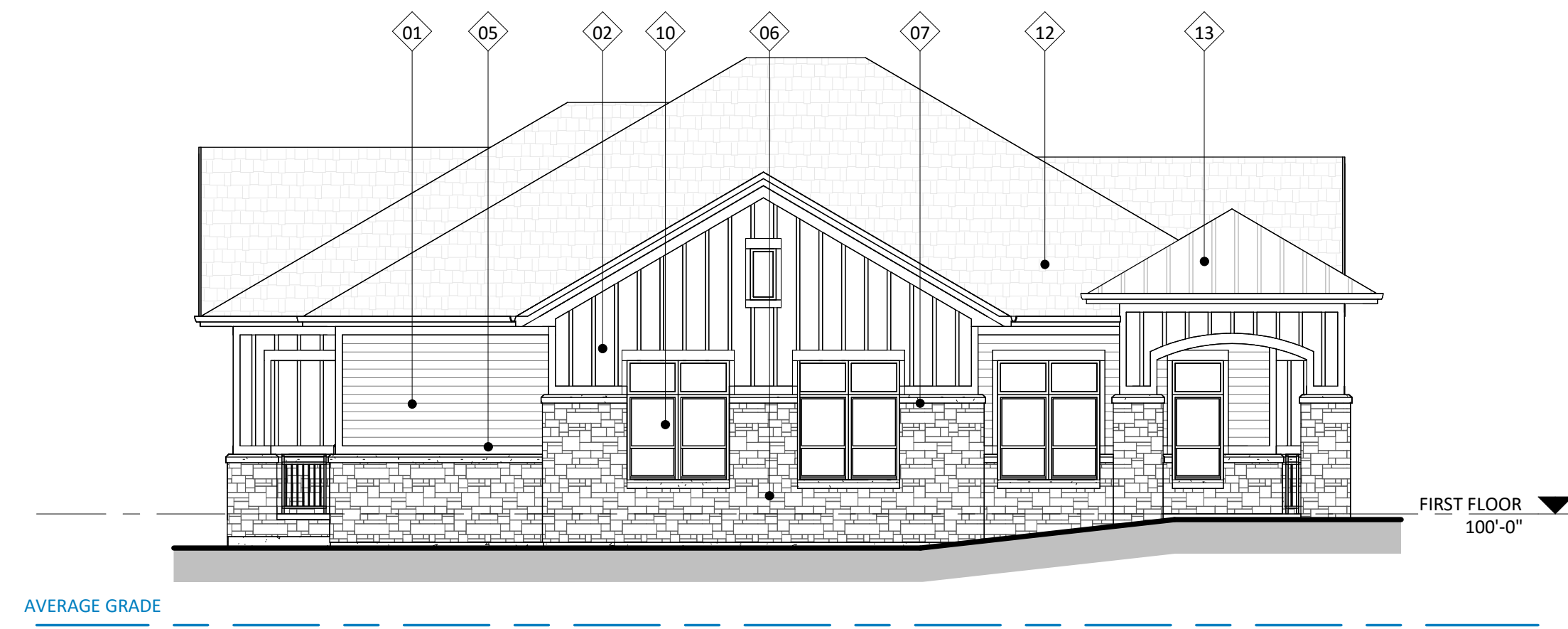
PROJECT NO. **2411**

© Knothe & Bruce Architects, LLC

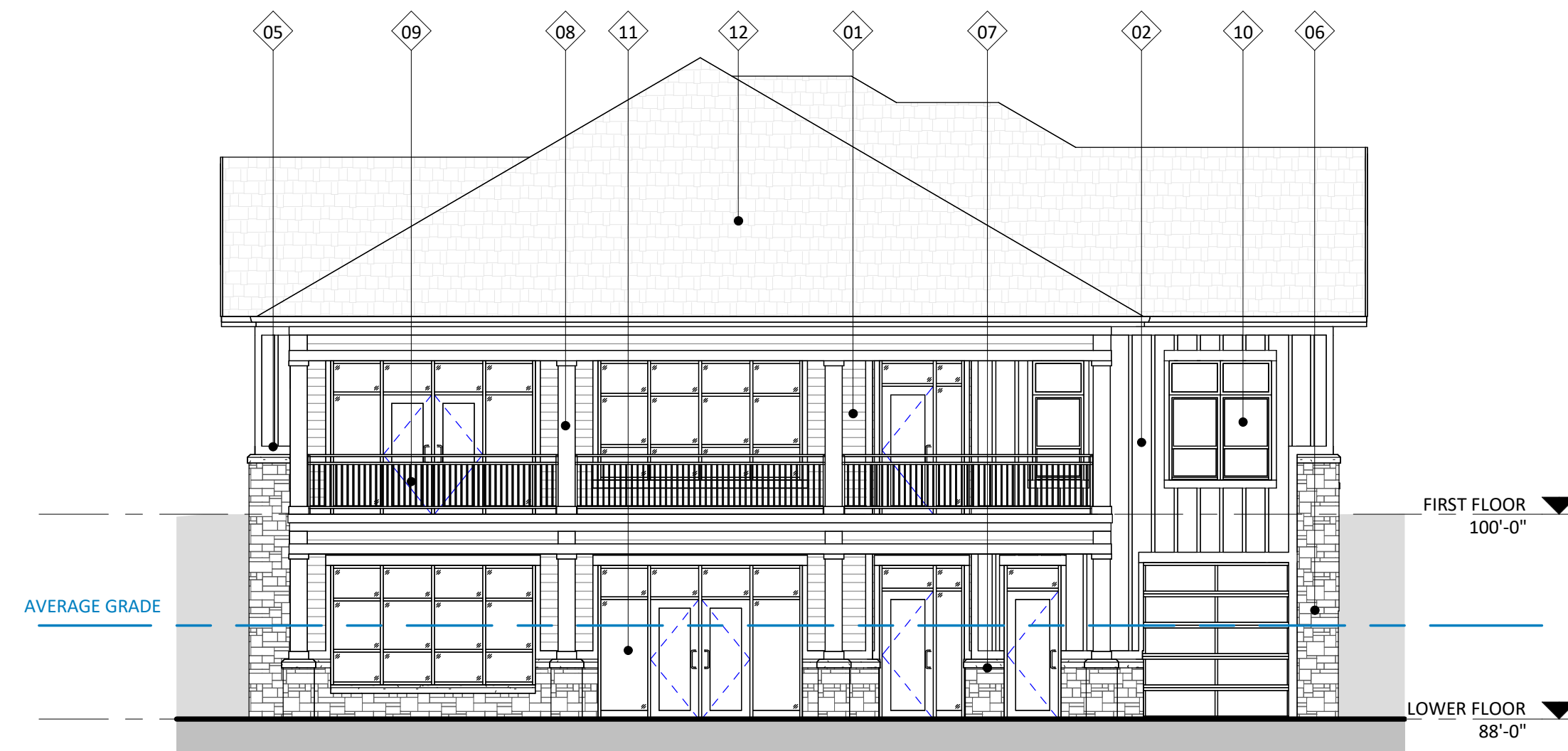


**CLUBHOUSE  
ROOF PLAN**  
AC102-7 3/16" = 1'-0"



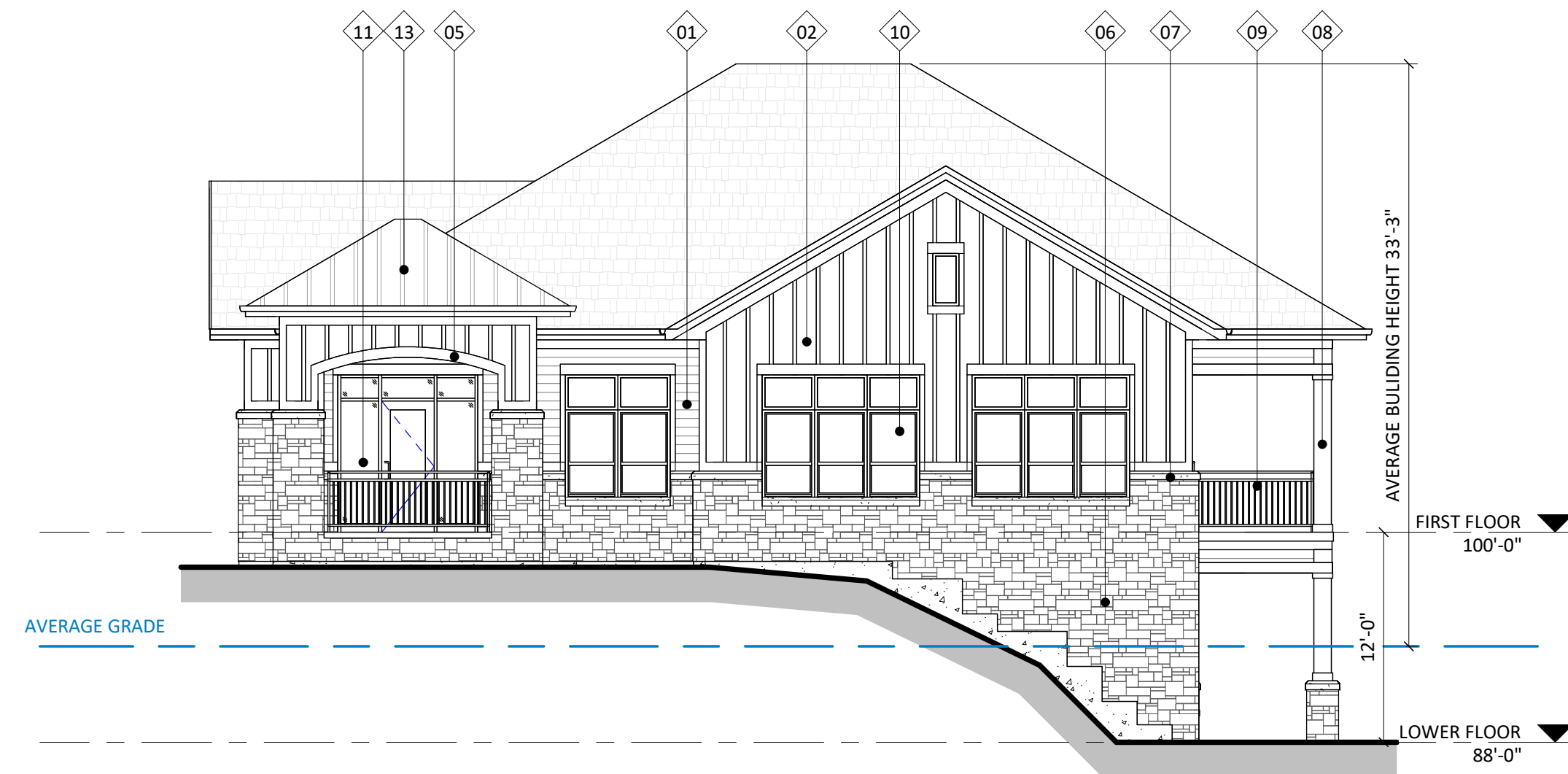


3 ELEVATION - WEST  
AC201-7 1/8" = 1'-0"

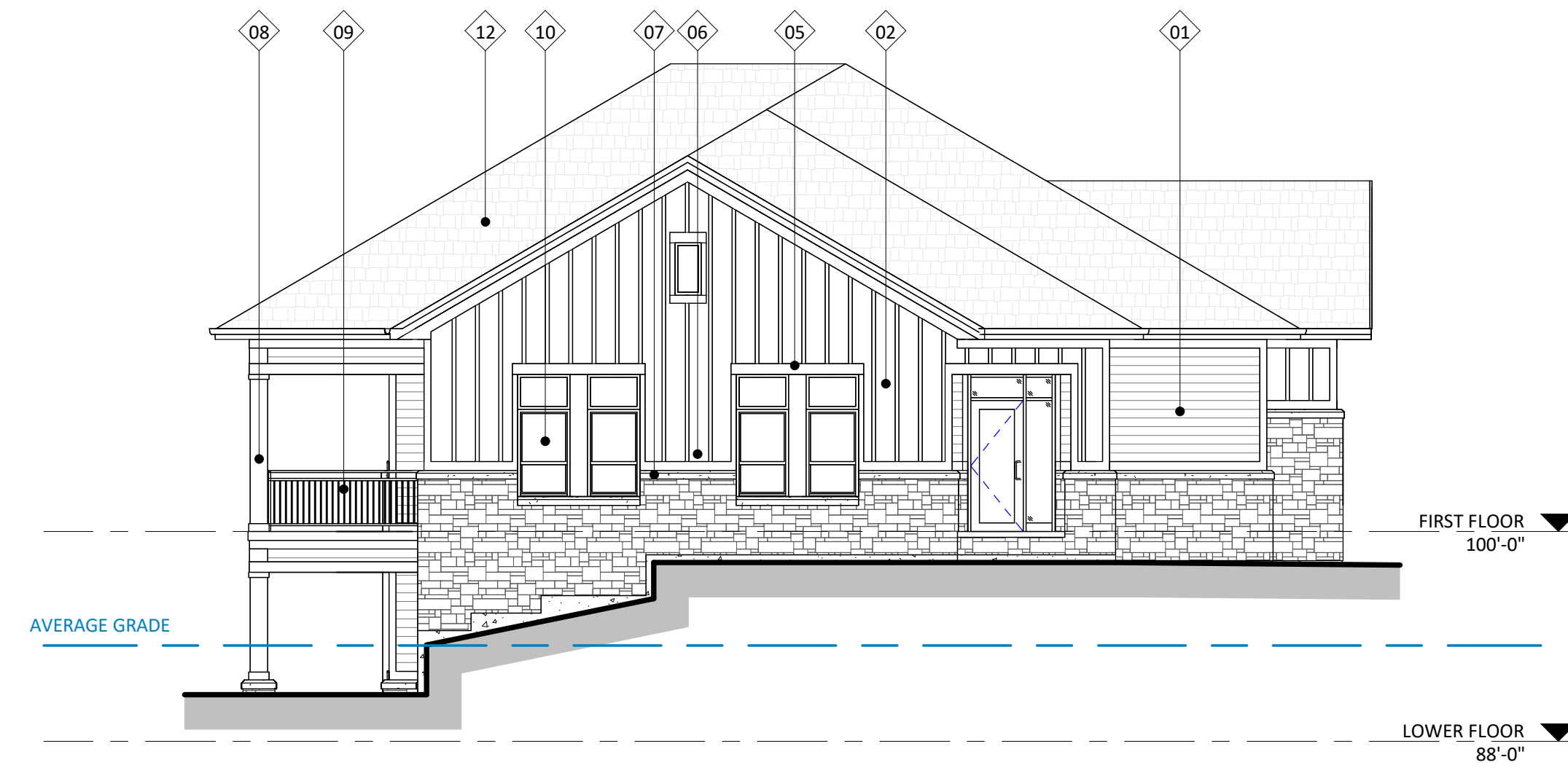


4 ELEVATION - EAST  
AC201-7 1/8" = 1'-0"

ISSUED  
LUA SUBMITTAL - 2024.10.07



1 ELEVATION - SOUTH  
AC201-7 1/8" = 1'-0"



2 ELEVATION - NORTH  
AC201-7 1/8" = 1'-0"

PROJECT TITLE  
**Midpoint  
Meadows -  
Building #7  
Club House**

Madison, WI  
SHEET TITLE  
**Exterior  
Elevations**

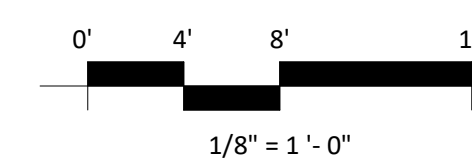
SHEET NUMBER

**AC201-7**

PROJECT NUMBER

**2411**

EXTERIOR MATERIAL SCHEDULE			
MARK	BUILDING ELEMENT	MANUFACTURER	COLOR
01	COMPOSITE LAP SIDING 6"	JAMES HARDIE	DEEP OCEAN
02	COMPOSITE BOARD & BATTEN	JAMES HARDIE	LIGHT MIST
04	COMPOSITE PANEL	JAMES HARDIE	LIGHT MIST
05	COMPOSITE TRIM	JAMES HARDIE	LIGHT MIST
06	STONE VENEER	COUNTY MATERIAL	CUSTOM GRAY BLEND
07	CAST STONE	EDWARDS	GRAY
08	ACCENT TRIM	JAMES HARDIE - WOODTONE	CORDOVAN BROWN
09	RAILINGS & HANDRAILS	SUPERIOR	BLACK
10	COMPOSITE WINDOW	ANDERSEN	BLACK
11	ALUMINIUM STOREFRONT	N/A	BLACK
12	ROOF SHINGLES	TBD	GRAY
13	METAL ROOF	TBD	SILVER

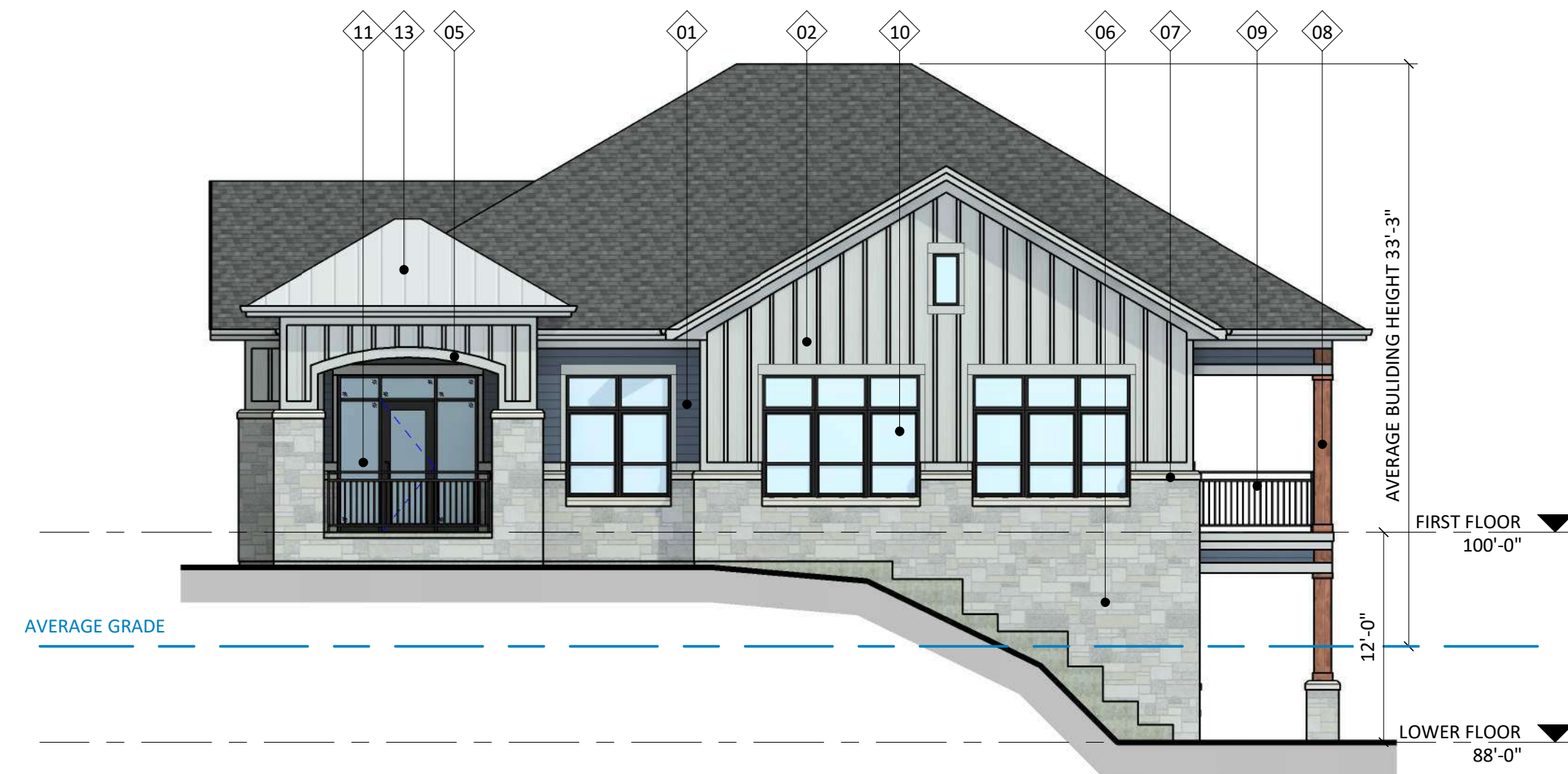




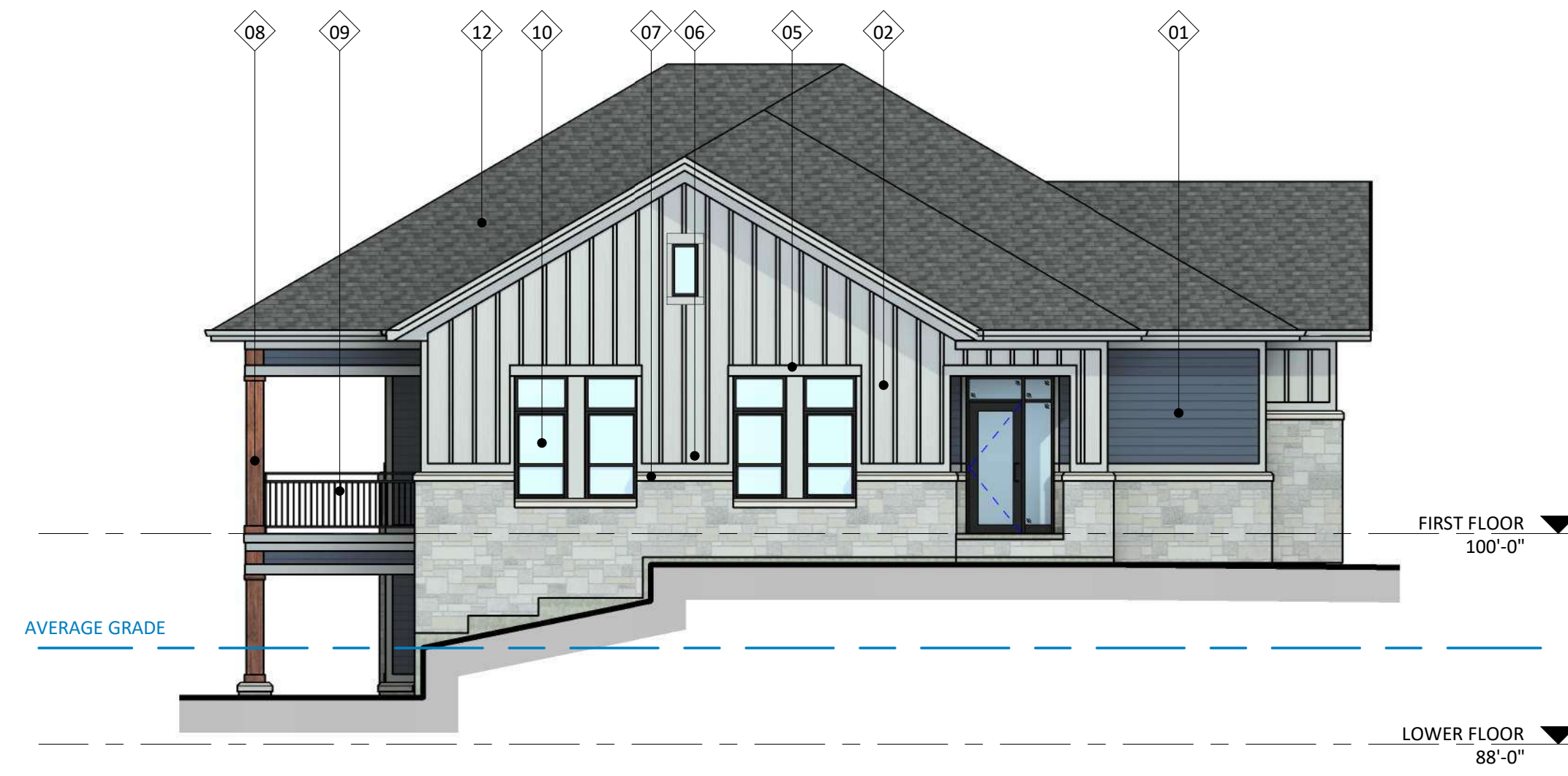
3 COLORED ELEVATION - WEST  
AC202-7 1/8" = 1'-0"



4 COLORED ELEVATION - EAST  
AC202-7 1/8" = 1'-0"



1 COLORED ELEVATION - SOUTH  
AC202-7 1/8" = 1'-0"



2 COLORED ELEVATION - NORTH  
AC202-7 1/8" = 1'-0"

ISSUED  
LUA SUBMITTAL - 2024.10.07

PROJECT TITLE  
**Midpoint  
Meadows -  
Building #7  
Club House**

Madison, WI  
SHEET TITLE  
**Exterior  
Elevations Colored**

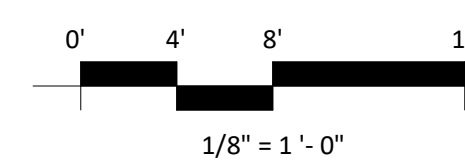
SHEET NUMBER

**AC202-7**

PROJECT NUMBER

**2411**

EXTERIOR MATERIAL SCHEDULE			
MARK	BUILDING ELEMENT	MANUFACTURER	COLOR
01	COMPOSITE LAP SIDING 6"	JAMES HARDIE	DEEP OCEAN
02	COMPOSITE BOARD & BATTEN	JAMES HARDIE	LIGHT MIST
04	COMPOSITE PANEL	JAMES HARDIE	LIGHT MIST
05	COMPOSITE TRIM	JAMES HARDIE	LIGHT MIST
06	STONE VENEER	COUNTY MATERIAL	CUSTOM GRAY BLEND
07	CAST STONE	EDWARDS	GRAY
08	ACCENT TRIM	JAMES HARDIE - WOODTONE	CORDOVAN BROWN
09	RAILINGS & HANDRAILS	SUPERIOR	BLACK
10	COMPOSITE WINDOW	ANDERSEN	BLACK
11	ALUMINIUM STOREFRONT	N/A	BLACK
12	ROOF SHINGLES	TBD	GRAY
13	METAL ROOF	TBD	SILVER





EXTERIOR MATERIAL SCHEDULE			
MARK	BUILDING ELEMENT	MANUFACTURER	COLOR
01	COMPOSITE LAP SIDING 6"	JAMES HARDIE	DEEP OCEAN
02	COMPOSITE BOARD & BATTEN	JAMES HARDIE	LIGHT MIST
03	COMPOSITE LAP SIDING 6"	JAMES HARDIE - WOODTONE	OLD CHERRY
04	COMPOSITE PANEL	JAMES HARDIE	LIGHT MIST
05	COMPOSITE TRIM	JAMES HARDIE	LIGHT MIST
06	STONE VENEER	COUNTY MATERIAL	CUSTOM GRAY BLEND
07	CAST STONE	EDWARDS	GRAY
08	ACCENT TRIM	JAMES HARDIE - WOODTONE	OLD CHERRY
09	RAILINGS & HANDRAILS	SUPERIOR	BLACK
10	COMPOSITE WINDOW	ANDERSEN	BLACK
11	ALUMINIUM STOREFRONT	N/A	BLACK
12	ROOF SHINGLES	TBD	GRAY
13	METAL ROOF	TBD	SILVER



ISSUED  
UDC / LUA SUBMITTAL 2024.10.07



PROJECT TITLE  
Midpoint  
Meadows

Madison, WI  
SHEET TITLE  
Material Board

SHEET NUMBER  
AC900  
PROJECT NUMBER  
2411



Concept Image



Concept Image



Concept Image



Concept Image



Concept Image



Concept Image



Concept Image