

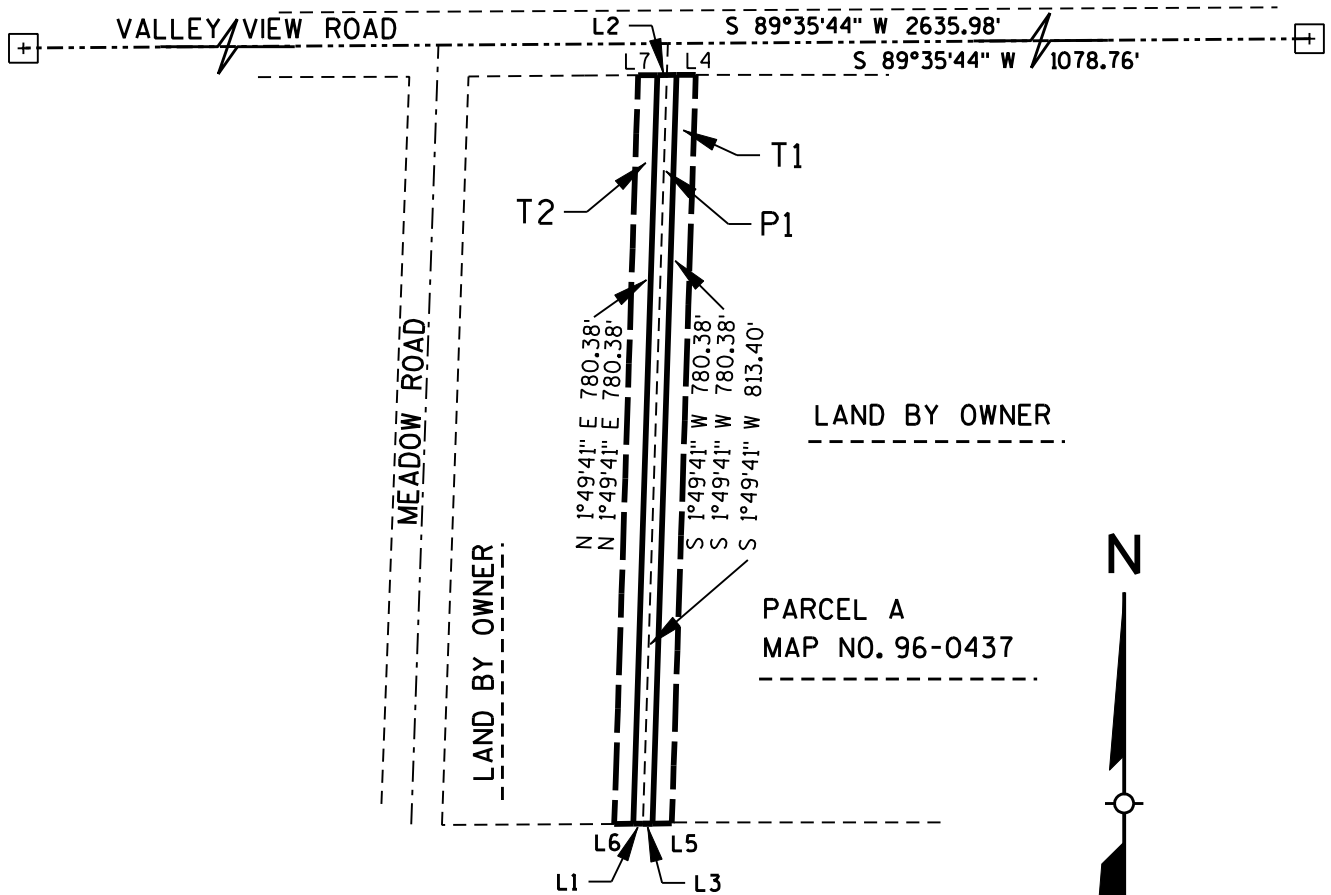
EXHIBIT S3-5

LOCATED IN PART OF THE NE 1/4 OF THE NE 1/4
SECTION 32, TOWNSHIP 7 NORTH, RANGE 8 EAST
TOWN OF MIDDLETON, DANE COUNTY, WISCONSIN

No.	Direction	Distance
L1	S 89°35'44" W	10.01'
L2	N 89°35'44" E	20.02'
L3	S 89°35'44" W	10.01'
L4	N 89°35'44" E	20.02'
L5	S 89°35'44" W	20.02'
L6	S 89°35'44" W	20.02'
L7	N 89°35'44" E	20.02'

N 1/4 CORNER
SECTION 32, T. 7 N., R. 8 E.

NORTHEAST CORNER
SECTION 32, T. 7 N., R. 8 E.



LAND BY OWNER

PARCEL A
MAP NO. 96-0437

P1=PERMANENT SEWER EASEMENT
T1/T2=TEMPORARY SEWER CONSTRUCTION EASEMENT



THIS INSTRUMENT WAS
DRAFTED BY EARTH TECH
EARTH TECH, INC.
MADISON, WI.

EARTH TECH PROJECT NO. 84025

SHEET OF

OWNER:
CHARLES A. OEHLER
7415 VALLEY VIEW ROAD
MIDDLETON, WI 53562