



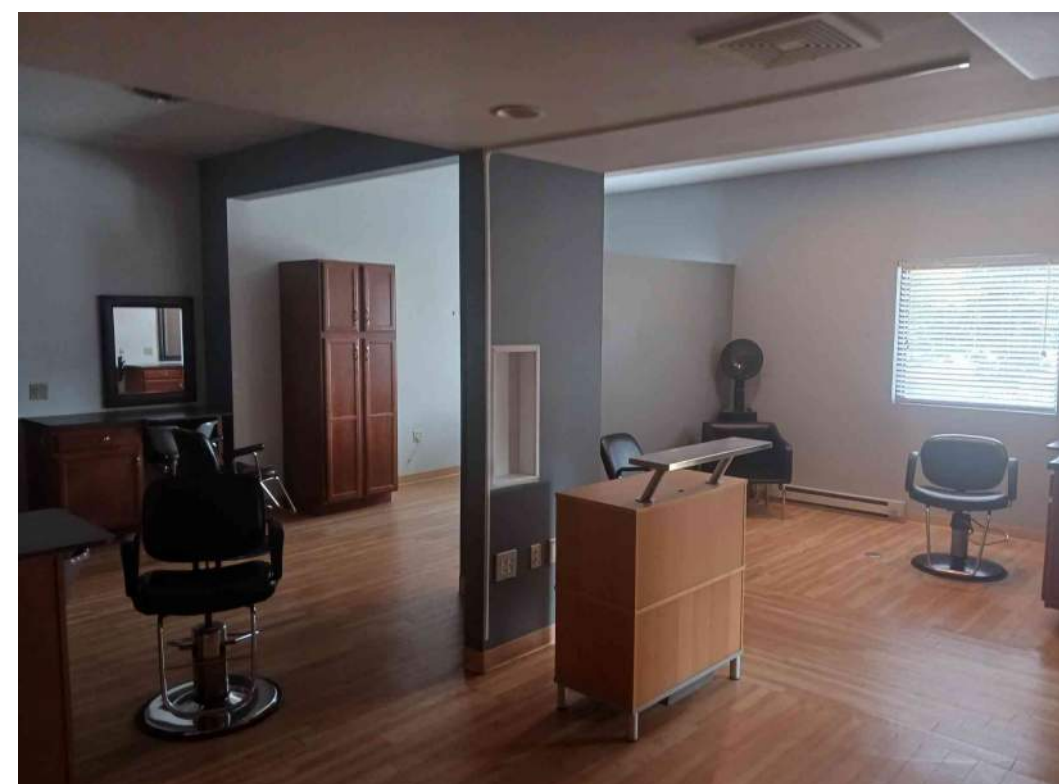
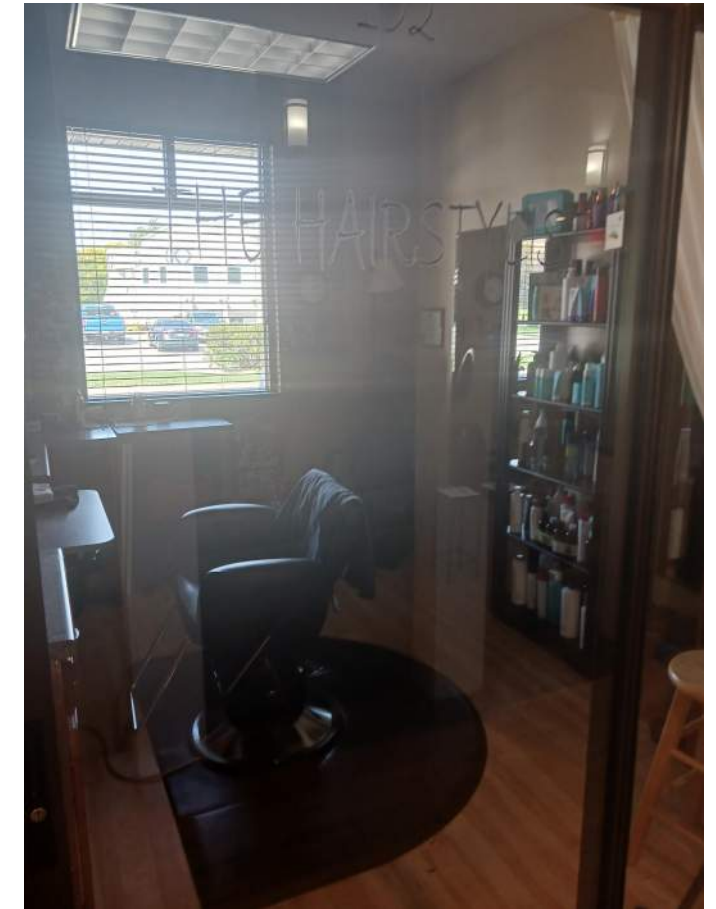
**JLA**  
ARCHITECTS

## YELLOWSTONE APARTMENTS

DEMOLITION PHOTOS EXTERIOR

OCTOBER 2, 2023

DP-001



**JLA**  
ARCHITECTS

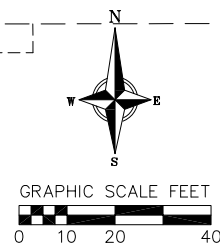
## YELLOWSTONE APARTMENTS

DEMOLITION PLANS - INTERIOR

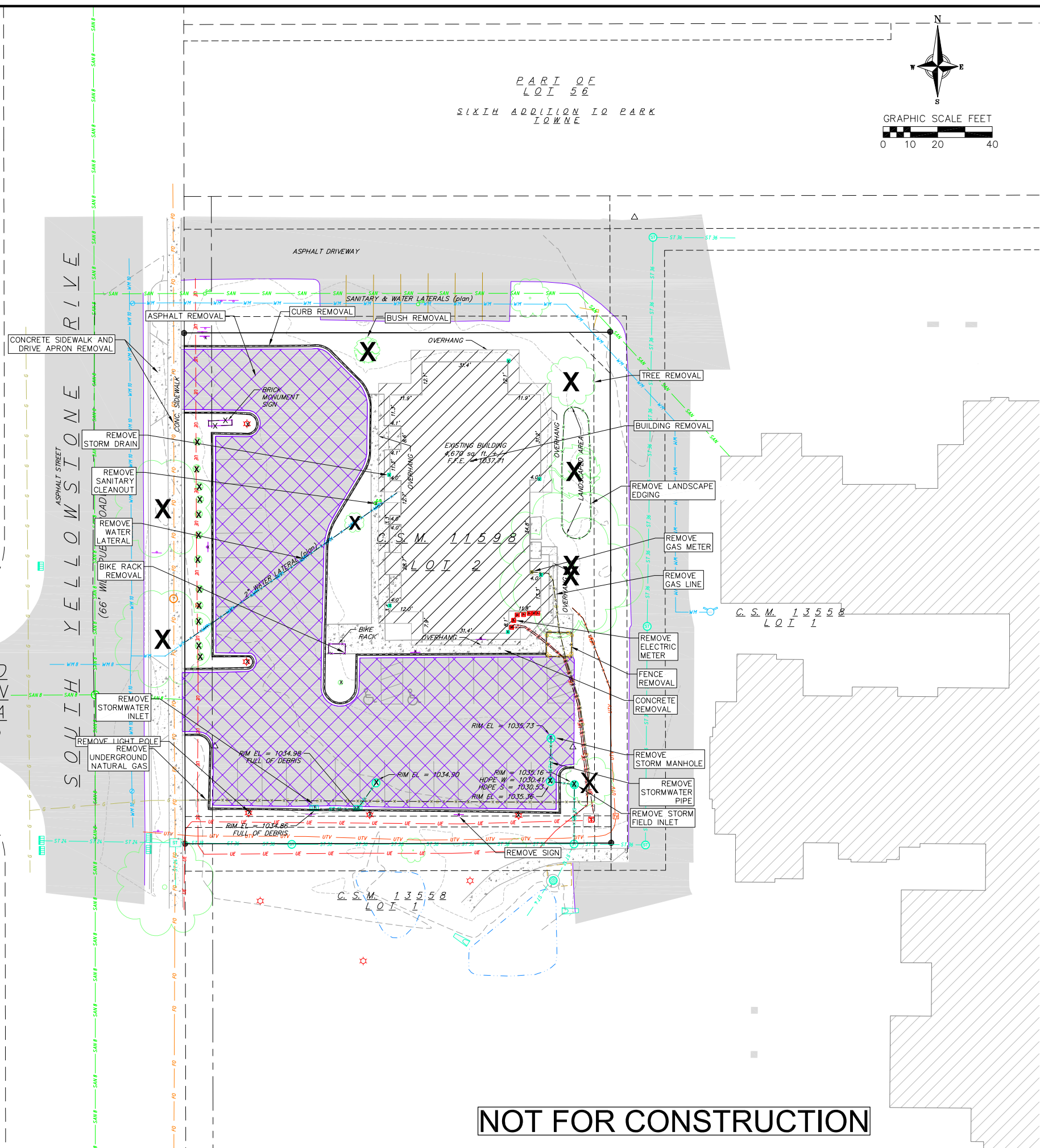
OCTOBER 02, 2023

DP - 002

PART OF  
LOT 52  
SIXTH ADDITION TO PARK  
TOWNE



GRAND  
TERRAZA  
(PUBLIC ROADWAY)



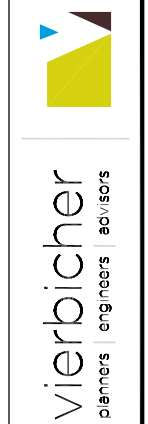
DEMOLITION PLAN LEGEND

- ✘ TRANSFORMER REMOVAL
- ✘ ELECTRIC METER REMOVAL
- ✘ GAS METER REMOVAL
- ✘ SANITARY CLEANOUT REMOVAL
- ✘ ROOF DRAIN REMOVAL
- ✘ CURB INLET REMOVAL
- ✘ FIELD INLET REMOVAL
- ✘ STORM MANHOLE REMOVAL
- ✘ SIGN REMOVAL
- ✘ LIGHT POLE REMOVAL
- ✘ BUSH REMOVAL
- ✘ TREE REMOVAL
- UNDERGROUND ELECTRIC REMOVAL
- UNDERGROUND CATV REMOVAL
- GAS UTILITY REMOVAL
- WATER MAIN REMOVAL
- STORM WATER PIPE REMOVAL
- FENCE REMOVAL
- MISCELLANEOUS REMOVAL
- [Hatched Box] BUILDING REMOVAL
- [Cross-hatched Box] ASPHALT REMOVAL
- [Dotted Box] CONCRETE REMOVAL
- [Dashed Line] CURB REMOVAL

DEMOLITION NOTES:

1. CONTRACTOR SHALL KEEP ALL CITY STREETS FREE AND CLEAR OF CONSTRUCTION RELATED DIRT/DUST/DEBRIS.
2. CONTRACTOR SHALL HAVE A WATER TRUCK ON SITE DURING DEMOLITION AND WATER AREA AS NEEDED TO KEEP DUST DOWN.
3. COORDINATE EXISTING UTILITY REMOVAL/ABANDONMENT WITH LOCAL AUTHORITIES AND UTILITY COMPANIES HAVING JURISDICTION.
4. ALL SAWCUTTING SHALL BE FULL DEPTH TO PROVIDE A CLEAN EDGE TO MATCH NEW CONSTRUCTION. MATCH EXISTING ELEVATIONS AT POINTS OF CONNECTION FOR NEW AND EXISTING PAVEMENT, CURB, SIDEWALKS, ETC. ALL SAWCUT LOCATIONS SHOWN ARE APPROXIMATE AND MAY BE FIELD ADJUSTED TO ACCOMMODATE CONDITIONS, JOINTS, MATERIAL TYPE, ETC. REMOVE MINIMUM AMOUNT NECESSARY FOR INSTALLATION OF PROPOSED IMPROVEMENTS.
5. CONTRACTOR SHALL PROVIDE AND SHALL BE RESPONSIBLE FOR ANY NECESSARY TRAFFIC CONTROL SIGNAGE AND SAFETY MEASURES DURING DEMOLITION AND CONSTRUCTION OPERATIONS WITHIN OR NEAR THE PUBLIC ROADWAY.
6. COORDINATE TREE REMOVAL WITH LANDSCAPE ARCHITECT. ALL TREES TO BE REMOVED SHALL BE REMOVED IN THEIR ENTIRETY AND STUMPS SHALL BE GROUND TO 12" BELOW PROPOSED SUBGRADE.
7. IF APPLICABLE, PROVIDE TREE PROTECTION FENCING PRIOR TO CONSTRUCTION OPERATIONS. MAINTAIN THROUGHOUT CONSTRUCTION.
8. CONTRACTOR SHALL OBTAIN ANY NECESSARY DEMOLITION AND UTILITY PLUGGING PERMITS.
9. ANY DAMAGE TO THE CITY PAVEMENT, INCLUDING DAMAGE RESULTING FROM CURB REPLACEMENT, WILL REQUIRE RESTORATION IN ACCORDANCE WITH THE CITY ENGINEERING PATCHING CRITERIA.

NOT FOR CONSTRUCTION



DEMOLITION PLAN  
421 YELLOWSTONE DRIVE  
CITY OF MADISON  
DANE COUNTY, WISCONSIN

REVISIONS		REVISIONS	
NO.	DATE	NO.	DATE

DATE: 10/02/2023  
 DRAFTER: [blank]  
 CHECKED: [blank]  
 PROJECT NO.: 230118

C2.0

THE RIGHT-OF-WAY IS THE SOLE JURISDICTION OF THE CITY OF MADISON AND IS SUBJECT TO CHANGE AT ANY TIME PER THE RECOMMENDATION/PLAN OF TRAFFIC ENGINEERING AND CITY ENGINEERING DEPARTMENTS.