

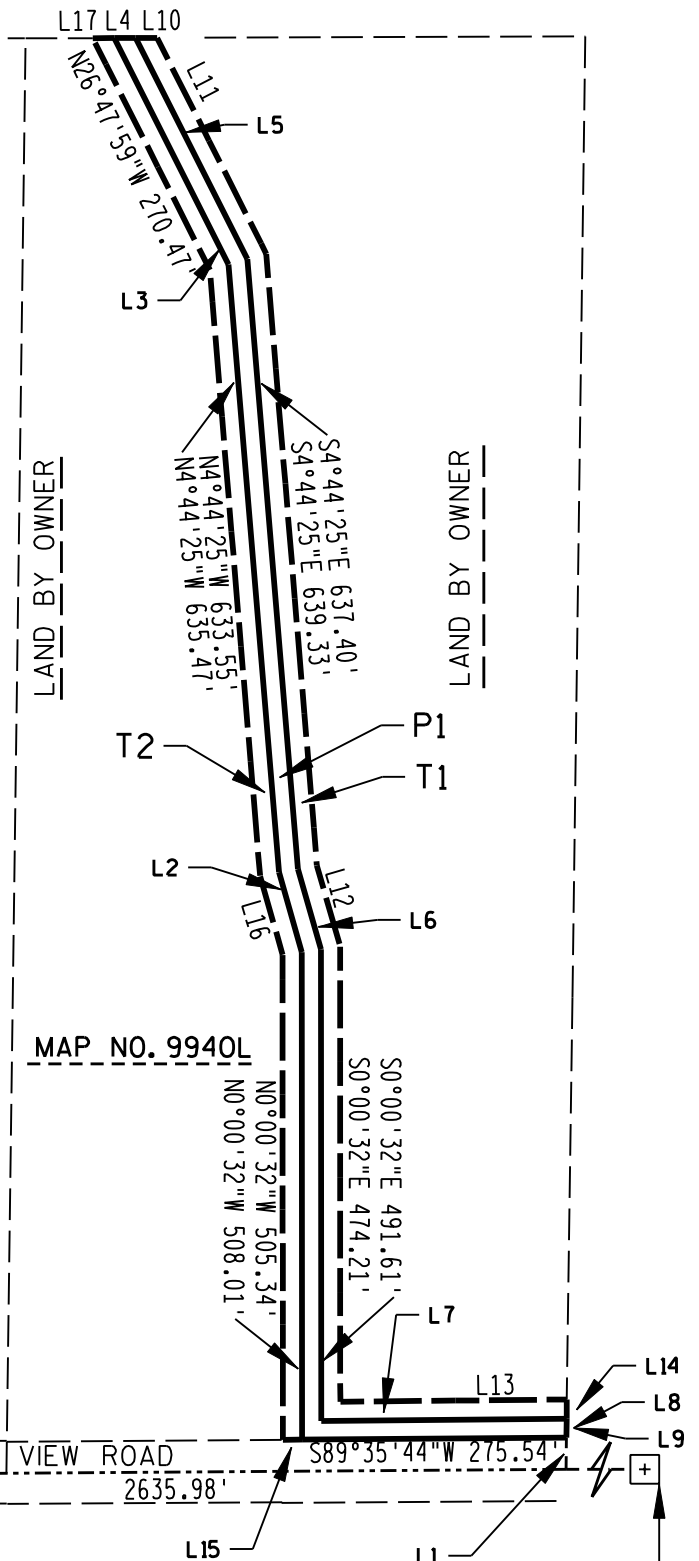
EXHIBIT S3-6

LOCATED IN PART OF THE W 1/2 OF THE SE 1/4
SECTION 29, TOWNSHIP 7 NORTH, RANGE 8 EAST
TOWN OF MIDDLETON, DANE COUNTY, WISCONSIN



LINE TABLE

No.	Direction	Distance
L1	N 0°46'21" E	33.01'
L2	N 16°00'00" W	86.40'
L3	N 26°47'59" W	264.36'
L4	N 89°47'49" E	22.37'
L5	S 26°47'59" E	258.24'
L6	S 16°00'00" E	87.24'
L7	N 89°24'53" E	255.82'
L8	S 0°46'21" W	19.88'
L9	N 0°46'21" E	52.89'
L10	N 89°47'49" E	22.37'
L11	S 26°47'59" E	252.13'
L12	S 16°00'00" E	88.08'
L13	N 89°24'53" E	236.09'
L14	S 0°46'21" W	20.01'
L15	S 89°35'44" W	20.00'
L16	N 16°00'00" W	85.57'
L17	N 89°47'49" E	22.37'



S/4 CORNER
SECTION 29, T. 7 N., R. 8 E.

SOUTHEAST CORNER
SECTION 29, T. 7 N., R. 8 E.

P1=PERMANENT SEWER EASEMENT
T1/T2=TEMPORARY SEWER CONSTRUCTION EASEMENT

THIS INSTRUMENT WAS
DRAFTED BY EARTH TECH
EARTH TECH, INC.
MADISON, WI.
EARTH TECH PROJECT NO. 84025



SHEET OF

OWNER:
KELENY LAND COMPANY LLC
4906 ROIGAN TERRACE
MADISON, WI 53716