

**APPLICATION FOR
URBAN DESIGN COMMISSION
REVIEW AND APPROVAL**

AGENDA ITEM # _____

Project # _____

DATE SUBMITTED: <u>March 30, 2011</u>	Action Requested
UDC MEETING DATE: <u>April 6, 2011</u>	<input type="checkbox"/> Informational Presentation
	<input type="checkbox"/> Initial Approval and/or Recommendation
	<input checked="" type="checkbox"/> Final Approval and/or Recommendation

PROJECT ADDRESS: 4002 Nakoosa Trail

ALDERMANIC DISTRICT: Lauren Cnare- District #3

OWNER/DEVELOPER (Partners and/or Principals)

ARCHITECT/DESIGNER/OR AGENT:

Porchlight, Inc./ Steve Schooler

Knothe & Bruce Architects, LLC

306 North Brooks Street

7601 University Avenue, Suite 201

Madison, WI 53715

Middleton, Wisconsin 53562

CONTACT PERSON: J. Randy Bruce/Knothe & Bruce Architects, LLC

Address: 7601 University Avenue, Suite 201

Middleton, Wisconsin 53562

Phone: 608-836-3690

Fax: 608-836-6934

E-mail address: rbruce@knothebruce.com

TYPE OF PROJECT:

(See Section A For:)

- Planned Unit Development (PUD)
 - General Development Plan (GDP)
 - Specific Implementation Plan (SIP)
- Planned Community Development (PCD)
 - General Development Plan (GDP)
 - Specific Implementation Plan (SIP)
- Planned Residential Development (PRD)
- New Construction or Exterior Remodeling in an Urban Design District* (A public hearing is required as well as a fee)
- School, Public Building or Space (Fee may be required)
- New Construction or Addition to or Remodeling of a Retail, Hotel, or Motel Building Exceeding 50,000 Sq.Ft.
- Planned Commercial Site

(See Section B for:)

- New Construction or Exterior Remodeling in C4 District (Fee required)

(See Section C for:)

- R.P.S.M. Parking Variance (Fee required)

(See Section D for:)

- Comprehensive Design Review* (Fee required)
- Street Graphics Variance* (Fee Required)
- Other _____

*Public Hearing Required (Submission Deadline 3 Weeks in Advance of Meeting Date)

March 30, 2011

Mr. Al Martin
Department of Planning & Development
City of Madison
215 Martin Luther King Jr. Blvd
P.O. Box 2985
Madison, WI 53701

Re: Resubmittal for Final Presentation to the UDC
M-1 to C-2 to PRD
4002 Nakoosa Trail

Dear Mr. Martin:

We had a final presentation on January 19, 2011 for this project and it was approved with UDC's request of resubmitting only the landscape plan and lighting plan for final review. Therefore, you will find the attached drawings that address the UDC comments pertaining to these items.

Thank you for your time in reviewing our proposal.

Very Truly Yours,

J. Randy Bruce, AIA
Managing Member



January 5, 2011
PRELIMINARY
LANDSCAPE & PLANTING
PLAN



PLANTING SCHEDULE

Proposed Deciduous Trees

Qty	Size	Rt Cond	Botanical Name	Common Name
2	2" cal	B&B	<i>Acer rubrum</i>	Red Maple
8	6-8'	cont	<i>Betula papyrifera</i>	White Birch
2	2" cal	B&B	<i>Gleditsia triacanthos inermis</i> 'Skyline'	Skyline Honey Locust
3	1 1/2" cal	B&B	<i>Pyrus calleryana</i> 'Aristocrat'	Aristocrat Pear
2	1 1/2" cal	B&B	<i>Salix alba</i> 'Tristis'	Golden Weeping Willow
2	2" cal	B&B	<i>Ulmus americana</i> 'Morton'	Morton Elm

Proposed Evergreen Trees

Qty	Size	Rt Cond	Botanical Name	Common Name
20	3'	B&B	<i>Juniperus virginiana</i> 'Canaerti'	Canaert Juniper
2	3-4'	B&B	<i>Picea pungens</i>	Colorado Blue Spruce
3	4'	B&B	<i>Pinus strobus</i>	White Pine
3	4'	B&B	<i>Thuja occidentalis</i> 'Dark Green'	Arborvitae

Proposed Deciduous & Evergreen Shrubs

Qty	Size	Rt Cond	Botanical Name	Common Name
4	24"	cont	<i>Syringa vulgaris</i>	Common Lilac
9	1 gal	cont	<i>Celastrus scandens</i>	American Bittersweet

LANDSCAPE WORKSHEET

Element	Point Value	Qty	Points Achieved	Credits	
				Qty	Points
Canopy Tree: 2"-2 1/2"	35	6	210		
Deciduous Shrub	2	4	8		
Evergreen Shrub	3				
Decorative Wall or Fence (per 10 lf)	5	10	50		
Earth Berm (per 10 lf)					
Avg Height 30"	5				
Avg Height 15"	2				
Evergreen Trees					
3' height minimum	15	8	120		
Canopy Tree or Small Tree: 1 1/2"-2" caliper	15	13	195		
Sub totals			583	+	= 583

Total Number of Parking Stalls = 18
 Required Number of Canopy Trees = 1
 Required Number of Landscape Points = 93.2
 Total Required Landscape Points = 128.2

HIGHWAY BUFFER WORKSHEET

Element	Point Value	Qty	Points Achieved	Credits	
Evergreen Trees					
3' height minimum	15	20	300		
Sub totals			300	+	= 300

LANDSCAPE & BUFFER WORKSHEET TOTAL = 883

- FIELD NOTES**
- MULCHES:**
- GRAVEL MULCH TO BE 4" DEPTH WITH FABRIC AND COMMERCIAL GRADE PLASTIC EDGING. TO BE EITHER CRUSHED RED GRANITE, OR 3/4" CLEAR AS SPECIFIED ON PLAN.
 - ALL TREES TO RECEIVE 3' DIA. BARK MULCH RING, 4" DEPTH. TO BE SHREDDED HARDWOOD MULCH.
 - ALL SHRUBS TO RECEIVE CONTINUOUS 3' WIDE BARK MULCH BED, 4" DEPTH. TO BE SHREDDED HARDWOOD MULCH.
- GROUNDCOVERS:**
- LAWN AREAS** - TO BE SEEDED WITH "MADISON PARKS" OR EQUIVALENT, WITH STARTER FERTILIZER, AND STRAW MULCH. ALL SWALES TO RECEIVE EROSION CONTROL MATTING AS NEEDED.
 - NO-MOW FESCUE AREAS** - TO BE SEEDED WITH OLDS "NO-MOW FESCUE" TO RECEIVE "CAREFREE FINE FESCUE", WITH STARTER FERTILIZER, WITH STRAW MULCH AND EROSION CONTROL MATTING AS NEEDED.
 - PRAIRIE AREAS** - TO BE SEEDED WITH "WL HWY MIX #50" W/OVERSEED OF LITTLE BLUESTEM AND SWITCHGRASS, STRAW MULCH AND EROSION CONTROL MATTING AS NEEDED.
 - WET PRAIRIE AREAS** - TO BE SEEDED WITH OLD'S SEEDS EARTH CARPET FORMULATIONS "SURVIVOR" MIX W/OVERSEED OF SWITCH GRASS, AND STRAW MULCH AND EROSION CONTROL MATTING AS NEEDED.
- PLANT MATERIALS:**
- ALL PLANT MATERIALS TO MEET AMERICAN NURSERY & LANDSCAPE ASSOCIATION (ANLA) STANDARDS FOR STOCK AND PLANTING.
 - ALL PLANT MATERIALS TO RECEIVE ONE-YEAR GUARANTEE.
 - ALL TREES TO BE STAKED AS DETERMINED BY CONTRACTOR. LEANING TREES TO BE RE-STAKED DURING GUARANTEE PERIOD AS NECESSARY.

Revisions
 FEBRUARY 10, 2011
 MARCH 8, 2011
 MARCH 23, 2011

Project Title
**Porchlight
 4002 Nakoosa Trail**

Address
 Drawing Title
**Preliminary Landscape
 and Planting Plan**

Project No. Drawing No.
0826 L-1.0

This document contains confidential or proprietary information of Knothe & Bruce Architects. Neither the document nor the information herein is to be reproduced, distributed, used, or disclosed, either in whole or in part, except as specifically authorized by Knothe & Bruce Architects. Knothe & Bruce Architects is a Limited Liability Company of Wisconsin.

Lamp Included!



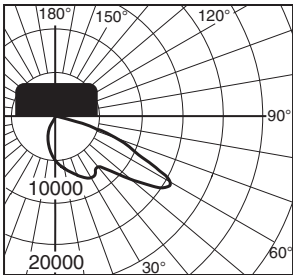
**AC Series
6" Extended Pole Mount**

Area Cutoff

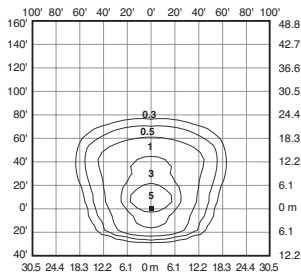
This compact forward-throw reflector has a main beam of 60+ degrees from vertical (30 degrees from horizontal), providing wide lateral distribution and excellent uniformities. A Backlight Shield accessory (standard on Wall Mount) permits precise cutoff adjustability.

Three Sizes:

- 12" square x 5" deep (305 x 127 mm)
- 16" square x 6.5" deep (406 x 165 mm)
- 22" square x 9.3" deep (559 x 235 mm)



Candlepower distribution curve of 400W MH 16" Area Cutoff Light. (Side View)



Isofootcandle plot of 400W MH Area Cutoff Light at 30' (9.1 m) mounting height, 0° tilt above horizontal, with backlight shield removed.

Order Information

Housing Size (sq.)	Wattage/ Lamp	Catalog Number	Mounting Code (Insert Code at * in Catalog #)
12"	150W PSMH	MAC*615-M	1 = 1-1/2" Close Pole Mount
16"	150W PSMH	AC*615-M	2 = 6" Extended Pole Mount
16"	250W PSMH	AC*625-M	3 = 2" Adjustable Fitter
16"	320W PSMH	AC*632-M	4 = Yoke Mount
16"	400W PSMH	AC*640-M	6 = 1/2" Adjustable Fitter (12" housing only)
22"	750W PSMH	AC*675-M	8 = Without Mounting (hardware)
12"	50W MH	MAC*405-M	K = Round Tube Off-Center Tenon Mount (16" housing only) (For 2-3/8" or 3" O.D.)
12"	70W MH	MAC*407-M	M = Round Tube Off-Center Direct Mount (16" housing only) (Direct Fitter for 4" sq. pole)
12"	100W MH	MAC*410-M	W = Wall Mount (Backlight Shield is standard)
12"	175W MH	MAC*417-M	
16"	175W MH	AC*417-M	
16"	250W MH	AC*425-M	
16"	400W MH	AC*440-M	
22"	1000W MH	AC*499-M	
12"	35W HPS	MAC*503-1	
12"	50W HPS	MAC*505-D	
12"	70W HPS	MAC*507-M	
12"	100W HPS	MAC*510-M	
12"	150W HPS	MAC*515-M	
16"	250W HPS	AC*525-M	
16"	400W HPS	AC*540-M	

NOTE: When using multiple 22" sq. housings at 90° configuration, a special 12" arm is required; see page 148.

◀ Some states prohibit these products from being sold.

* Specify Mounting (additional cost)

Other lamp wattages available—consult factory

◉ Reduced envelope lamp. ED28 for 320 & 400W PSMH and 400W MH; BT37 for 1000W MH.

Options: (Factory-installed)	Change Suffix To	Add After Suffix
120V Reactor ballast (50–150W HPS 12" housing only)	1	
277V Reactor ballast (PSMH only)	27	
347V ballast (50W HPS only)	6	
480V ballast (PSMH, 175–1000W MH & 70–400W HPS only)	5	
480V ballast (70–100W MH only)	5	
Tri-volt ballast (PSMH, MH & 70–400W HPS only)	T	
Single Fuse (277V Reactor, 120V, 277V or 347V)	27, 1, 2 or 6	F
Dual Fuse (208V, 240V or 480V) (n/a Canada)	3, 4 or 5	F
Quartz Standby (delay-relay type) (includes 100W Q lamp) (n/a 277V Reactor)	Q	
Button Photocell (Factory-installed with all mountings other than 2" Adjustable Fitter)		
NOTE: n/a on 1000W w/120V; all 480V	27, 1, 2, 3, 4 or 6	P
External Photocell (Factory-installed) (Page 131)		
For fixtures w/1000W, 120V	1	P
For fixtures w/480V	5	P

Accessories:

(Field-installed)	12"	16"	22"
Wire Guard	FWG-12	FWG-16	FWG-22
Backlight Shield	SBL-12	SBL-16	SBL-22

(standard on AC Series Wall Mount)

Button Photocell (Field-installed in fixtures with 2" Adjustable Fitter)	Catalog #
For fixtures w/120V (n/a on 1000W)	PC-1
For fixtures w/208, 240 or 277V	PC-2
For fixtures w/347V	PC*6

Mountings Page 114

Catalog Number Logic/Voltage Suffix Key Page 113

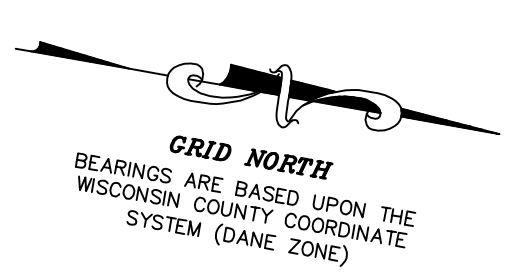
Optical Systems Pages 102–105

Accessories Page 131

Mounting Alternatives Pages 148–149

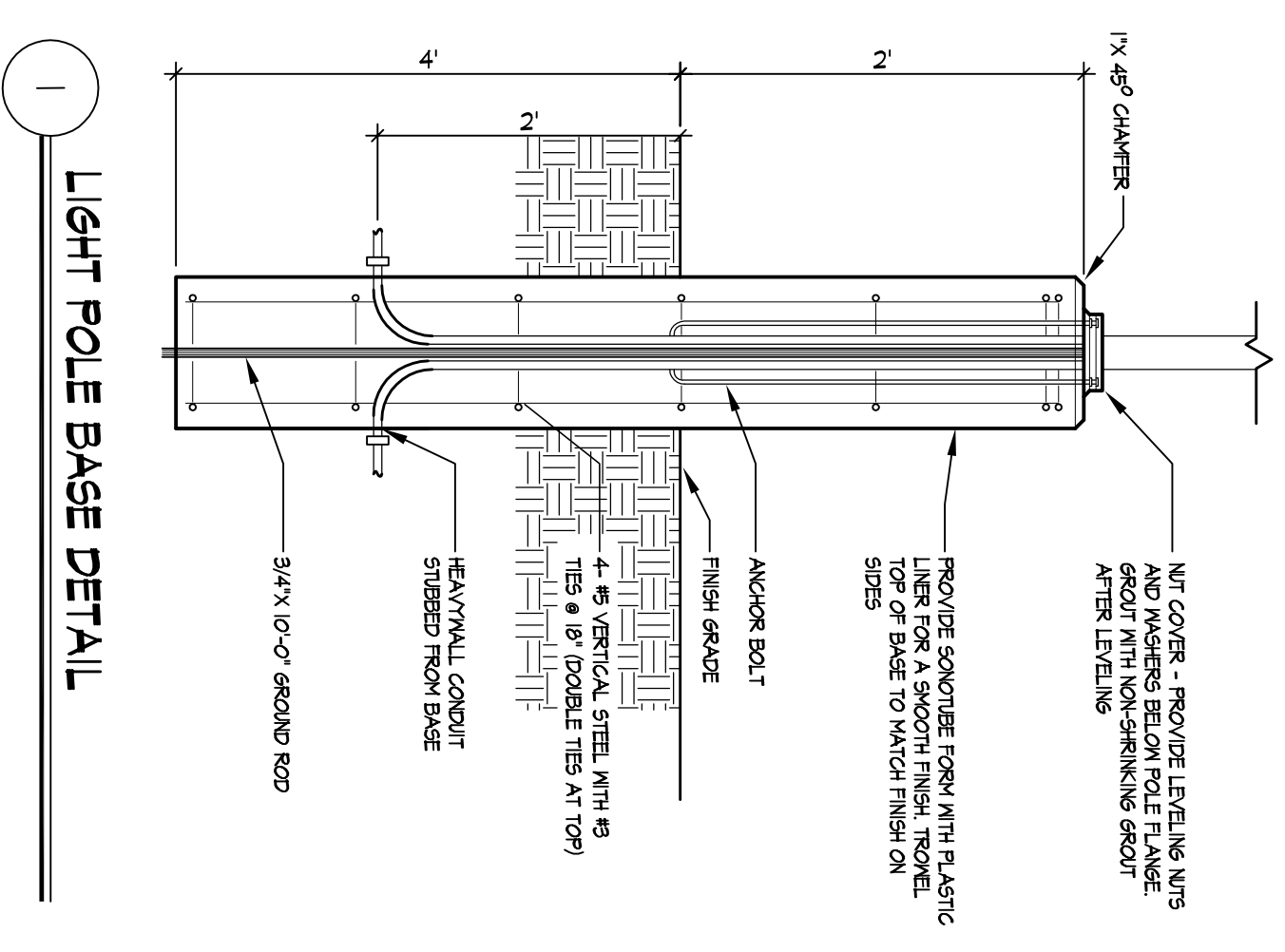
Mounting Brackets Pages 150–151

Poles Pages 152–159



LIGHTING STATISTICS				
Description	Symbol	Avg	Max	Min
Parking lot	+	1.1fc	2.6fc	0.3 fc
				Avg/Min
				3.71

LIGHTING SCHEDULE								
Symbol	Label	Qty	Manufacturer	Catalog Number	Description	Lamp	File	Mounting
0	A	3	RUDO LIGHTING	MAC407SBL	17" AREA CUTOFF / W/BACK LIT. SHIELD	70 WATT MH	MAC407SBL.as	20'-0" ABOVE GRADE CONC. BASE (SEE FC-113)



1 LIGHT POLE BASE DETAIL

Revisions
 Conditional Use Submitted - January 5, 2011
 UDC Final Submitted - January 12, 2011

